

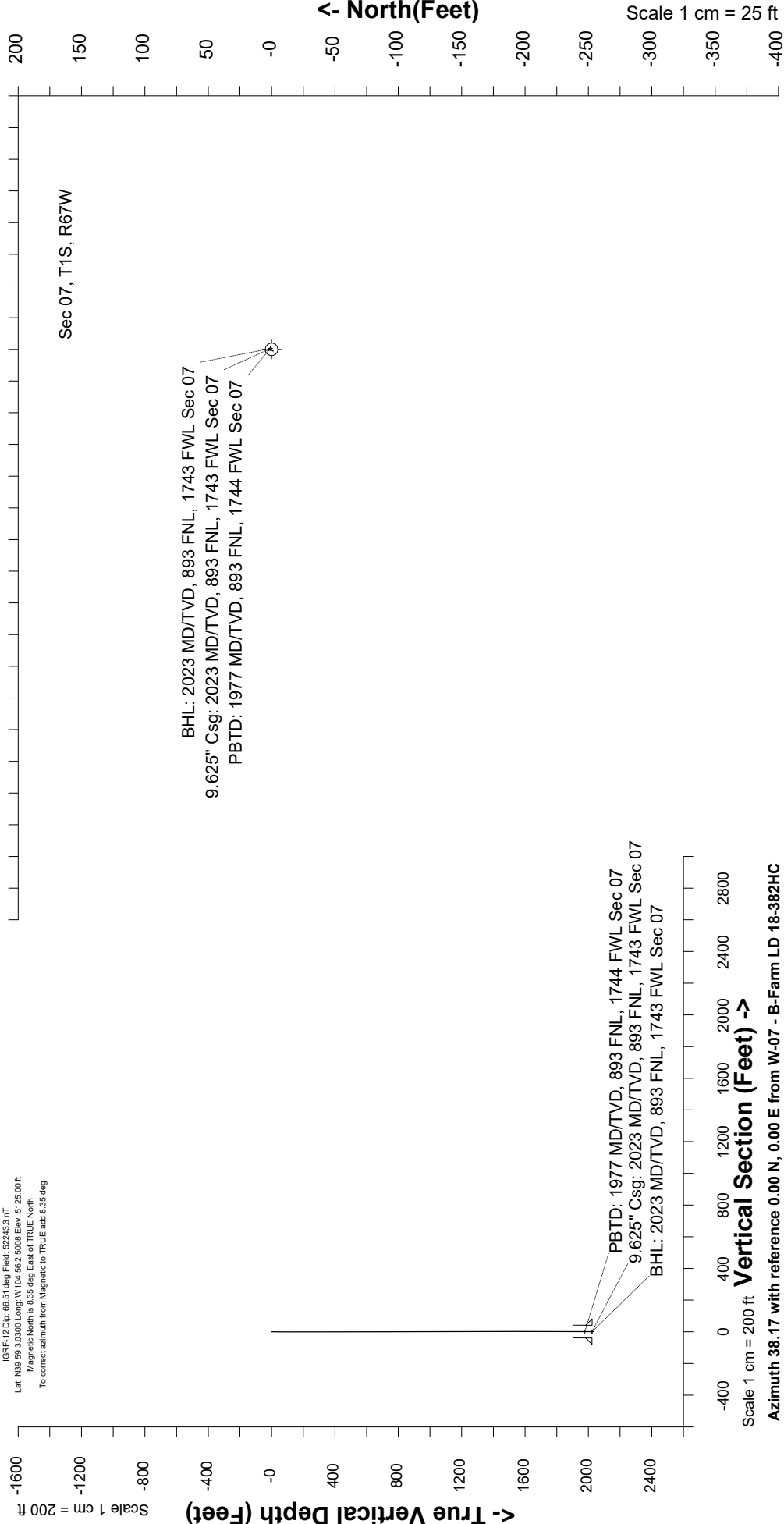
Great Western Operating Company, LLC

Created by	mmount
Date plotted	29-Apr-2020
Plot reference is B-Farm LD 18-382HC (AWB).	
Ref wellpath is B-Farm LD 18-382HC (AWP#1).	
Coordinates are in Feet reference W-07 - B-Farm LD 18-382HC.	
True Vertical Depths are reference Rig Datum.	
Measured Depths are reference Rig Datum.	
Rig Datum: Actual Datum #1	
Rig Datum to Mean Sea Level: 5131.00 ft	
Plot North is aligned to TRUE North.	

Location	Colorado	Slot	W-07 - B-Farm LD 18-382HC
Field	Wattenburg	Well	B-Farm LD 18-382HC
Installation	B-Farm	Wellbore	B-Farm LD 18-382HC (AWB)

East (Feet) ->

Scale 1 cm = 25 ft



Great Western Operating Co, LLC
 Directional Survey Report
 Wellpath: B-Farm LD 18-382HC
 MDs and TVDs are from Rig Floor 5131.0ft above Mean Sea Level

MD[ft]	Inc[deg]	Azi[deg]	TVD[ft]	North[ft]	East[ft]	DLS [deg/100ft]	Vertical Section[ft]
0.00	0.00	0.00	0.00	0.00	0.00		0.00
84.00	0.53	219.40	84.00	-0.30	-0.25	0.00	-0.39
172.00	0.53	229.06	172.00	-0.88	-0.81	0.00	-1.20
261.00	0.18	263.25	260.99	-1.17	-1.26	0.00	-1.70
353.00	0.13	18.57	352.99	-1.09	-1.37	0.00	-1.70
443.00	0.31	62.07	442.99	-0.87	-1.12	0.00	-1.38
533.00	0.26	12.94	532.99	-0.56	-0.86	0.00	-0.98
623.00	0.70	6.97	622.99	0.18	-0.75	0.00	-0.32
713.00	0.70	27.27	712.98	1.22	-0.43	0.00	0.69
803.00	0.44	5.12	802.98	2.05	-0.15	0.00	1.52
893.00	0.66	315.46	892.97	2.76	-0.48	0.00	1.87
983.00	0.26	230.65	982.97	3.00	-1.00	0.00	1.74
1073.00	0.26	111.91	1072.97	2.80	-0.97	0.00	1.60
1163.00	0.26	330.31	1162.97	2.90	-0.88	0.00	1.73
1253.00	0.09	210.17	1252.97	3.02	-1.02	0.00	1.74
1343.00	0.66	167.98	1342.97	2.45	-0.95	0.00	1.34
1433.00	0.22	163.85	1432.96	1.77	-0.79	0.00	0.91
1522.00	0.26	62.25	1521.96	1.70	-0.57	0.00	0.99
1612.00	0.53	104.08	1611.96	1.70	0.02	0.00	1.35
1702.00	0.31	112.35	1701.96	1.50	0.65	0.00	1.58
1792.00	0.22	138.45	1791.96	1.28	0.99	0.00	1.62
1882.00	0.13	161.30	1881.96	1.06	1.13	0.00	1.53
1966.00	0.31	254.64	1965.96	0.91	0.95	0.00	1.30
2023.00	0.31	254.63	2022.96	0.82	0.65	0.00	1.05