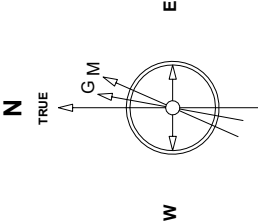


Great Western Operating Company, LLC

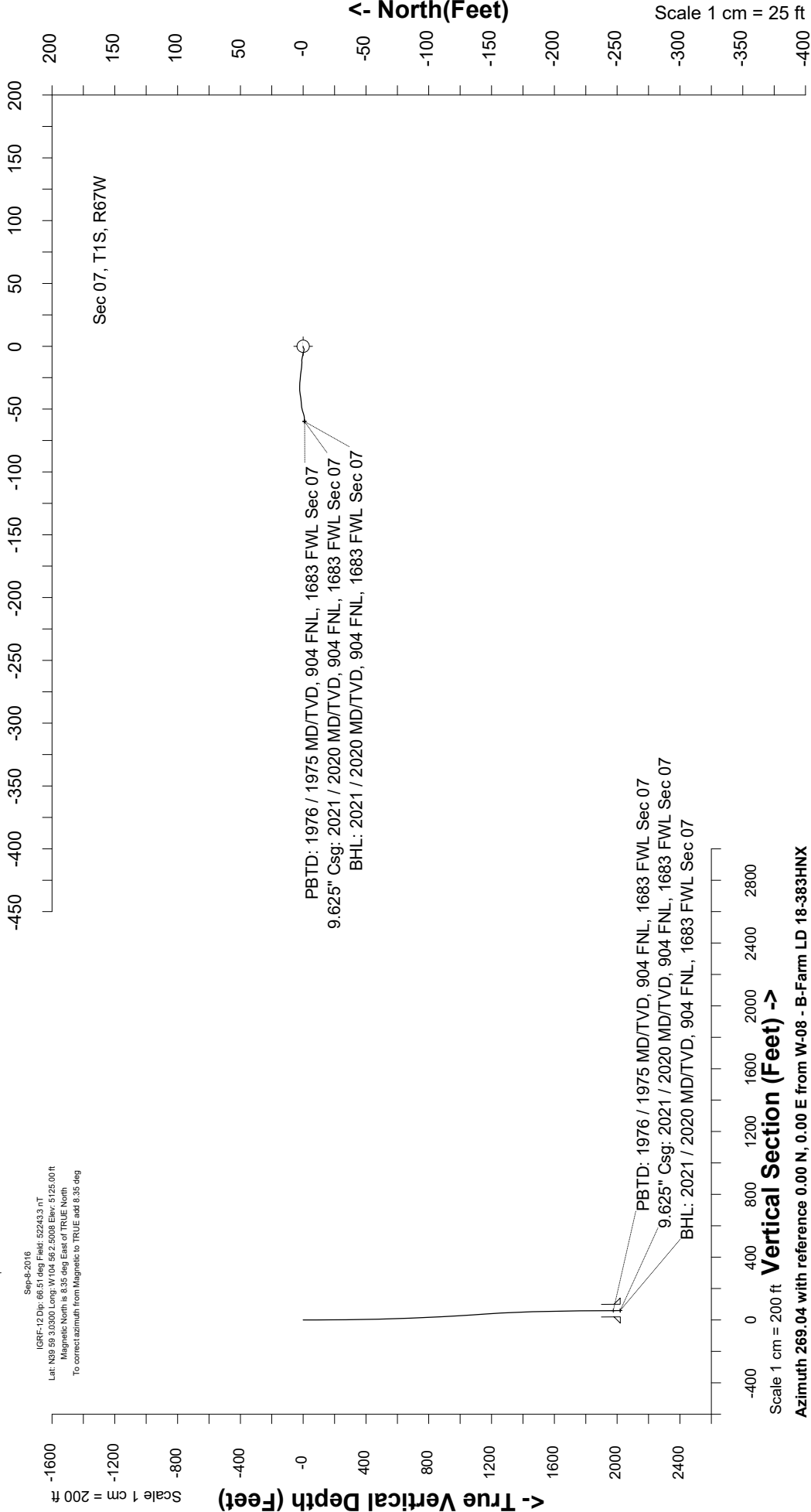
Created by	mmount
Date plotted	29-Apr-2020
Plot reference is B-Farm LD 18-383HNX (AWB).	
Ref wellpath is B-Farm LD 18-383HNX (AWP#1).	
Coordinates are in Feet reference W-08 - B-Farm LD 18-383HNX.	
True Vertical Depths are reference Rig Datum.	
Measured Depths are reference Rig Datum.	
Rig Datum: Actual Datum #1	
Rig Datum to Mean Sea Level: 5131.00 ft	
Plot North is aligned to TRUE North.	

Location	Colorado	Slot	W-08 - B-Farm LD 18-383HNX
Field	Wattenburg	Well	B-Farm LD 18-383HNX
Installation	B-Farm	Wellbore	B-Farm LD 18-383HNX (AWB)



East (Feet) ->

Scale 1 cm = 25 ft



Sep-8-2016
IGRF-12 Dip: 66.51 deg Field: 52243.3 nT
Lat: N39 59 3.0300 Long: W104 59 2.5008 Elev: 5125.00 ft
Magnetic North is 9.35 deg East of TRUE North
To correct azimuth from Magnetic to TRUE add 8.35 deg

Vertical Section (Feet) ->

Scale 1 cm = 200 ft

Azimuth 269.04 with reference 0.00 N, 0.00 E from W-08 - B-Farm LD 18-383HNX

Great Western Operating Co, LLC
 Directional Survey Report
 Wellpath: B-Farm LD 18-383HNX
 MDs and TVDs are from Rig Floor 5131.0ft above Mean Sea Level

MD[ft]	Inc[deg]	Azi[deg]	TVD[ft]	North[ft]	East[ft]	DLS [deg/100ft]	Vertical Section[ft]
0.00	0.00	0.00	0.00	0.00	0.00		0.00
84.00	0.44	278.02	84.00	0.04	-0.32	0.00	0.32
172.00	0.53	241.55	172.00	-0.10	-1.01	0.00	1.01
261.00	0.40	226.52	260.99	-0.51	-1.60	0.00	1.61
353.00	0.75	265.54	352.99	-0.78	-2.43	0.00	2.45
443.00	1.14	289.89	442.98	-0.52	-3.86	0.00	3.87
533.00	1.93	282.24	532.94	0.11	-6.18	0.00	6.18
623.00	2.15	283.73	622.89	0.83	-9.31	0.00	9.29
713.00	2.20	264.48	712.82	1.06	-12.67	0.00	12.65
803.00	2.90	280.04	802.73	1.29	-16.63	0.00	16.60
893.00	3.43	273.98	892.60	1.88	-21.55	0.00	21.52
983.00	2.94	278.02	982.46	2.39	-26.53	0.00	26.48
1073.00	4.00	271.96	1072.29	2.81	-31.95	0.00	31.90
1163.00	4.04	259.56	1162.07	2.35	-38.20	0.00	38.16
1253.00	3.34	266.42	1251.89	1.61	-43.94	0.00	43.90
1343.00	2.55	261.76	1341.77	1.16	-48.54	0.00	48.51
1433.00	1.27	246.73	1431.71	0.48	-51.43	0.00	51.42
1522.00	1.54	256.66	1520.69	-0.19	-53.50	0.00	53.50
1612.00	1.27	251.13	1610.66	-0.79	-55.62	0.00	55.63
1702.00	0.92	278.02	1700.64	-1.01	-57.28	0.00	57.29
1792.00	0.57	273.89	1790.64	-0.88	-58.45	0.00	58.45
1882.00	0.40	217.38	1880.63	-1.10	-59.08	0.00	59.09
1964.00	0.40	297.97	1962.63	-1.19	-59.51	0.00	59.52
2021.00	0.40	297.97	2019.63	-1.01	-59.86	0.00	59.87