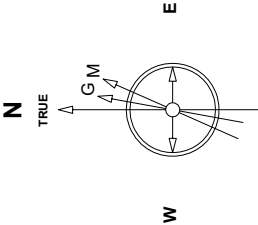


Great Western Operating Company, LLC

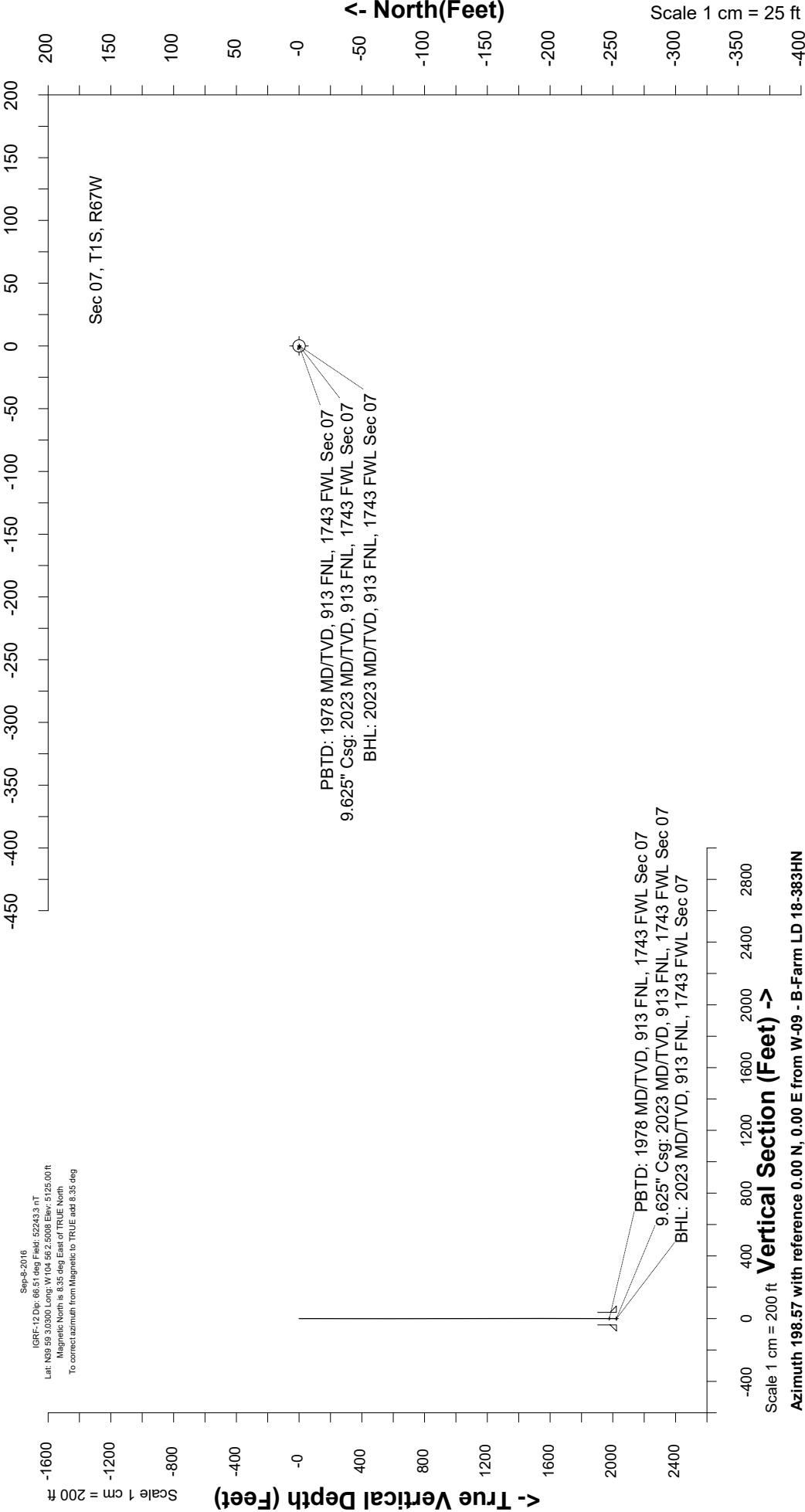
Created by	mmount
Date plotted	29-Apr-2020
Plot reference is B-Farm LD 18-383HN (AWB).	
Ref wellpath is B-Farm LD 18-383HN (AWP#1).	
Coordinates are in Feet reference W-09 - B-Farm LD 18-383HN.	
True Vertical Depths are reference Rig Datum.	
Measured Depths are reference Rig Datum.	
Rig Datum: Actual Datum #1	
Rig Datum to Mean Sea Level: 5131.00 ft	
Plot North is aligned to TRUE North.	

Location	Colorado	Slot	W-09 - B-Farm LD 18-383HN
Field	Wattenburg	Well	B-Farm LD 18-383HN
Installation	B-Farm	Wellbore	B-Farm LD 18-383HN (AWB)



East (Feet) ->

Scale 1 cm = 25 ft



Vertical Section (Feet) ->

Scale 1 cm = 200 ft  
Azimuth 198.57 with reference 0.00 N, 0.00 E from W-09 - B-Farm LD 18-383HN

Great Western Operating Co, LLC  
 Directional Survey Report  
 Wellpath: B-Farm LD 18-383HN (AWP#1)  
 MDs and TVDs are from Rig Floor 5131.0ft above Mean Sea Level

MD[ft]	Inc[deg]	Azi[deg]	TVD[ft]	North[ft]	East[ft]	DLS [deg/100ft]	Vertical Section[ft]
0.00	0.00	0.00	0.00	0.00	0.00		0.00
84.00	0.09	240.40	84.00	-0.03	-0.06	0.00	0.05
172.00	0.31	315.11	172.00	0.10	-0.29	0.00	-0.01
261.00	0.44	297.09	261.00	0.43	-0.76	0.00	-0.16
353.00	0.44	144.95	353.00	0.30	-0.87	0.00	-0.01
443.00	0.31	127.38	442.99	-0.13	-0.48	0.00	0.28
533.00	0.40	6.61	532.99	0.03	-0.25	0.00	0.05
623.00	0.35	266.59	622.99	0.33	-0.49	0.00	-0.16
713.00	0.35	336.47	712.99	0.56	-0.87	0.00	-0.26
803.00	0.70	278.02	802.99	0.89	-1.53	0.00	-0.36
893.00	0.48	305.44	892.98	1.19	-2.38	0.00	-0.37
983.00	0.40	162.97	982.98	1.11	-2.59	0.00	-0.22
1073.00	0.44	203.66	1072.98	0.49	-2.64	0.00	0.38
1163.00	0.57	112.52	1162.98	0.00	-2.36	0.00	0.75
1253.00	0.31	150.40	1252.98	-0.38	-1.83	0.00	0.94
1343.00	0.57	133.26	1342.97	-0.90	-1.38	0.00	1.29
1433.00	0.22	72.88	1432.97	-1.16	-0.89	0.00	1.38
1522.00	0.26	21.56	1521.97	-0.92	-0.66	0.00	1.08
1612.00	0.18	67.52	1611.97	-0.67	-0.45	0.00	0.78
1702.00	0.26	15.23	1701.97	-0.42	-0.27	0.00	0.49
1792.00	0.13	20.41	1791.97	-0.13	-0.18	0.00	0.18
1882.00	0.22	81.14	1881.97	-0.01	0.03	0.00	0.00
1966.00	0.22	225.72	1965.97	-0.10	0.07	0.00	0.07
2023.00	0.22	225.72	2022.97	-0.25	-0.08	0.00	0.26