

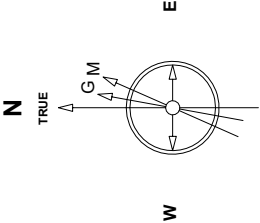
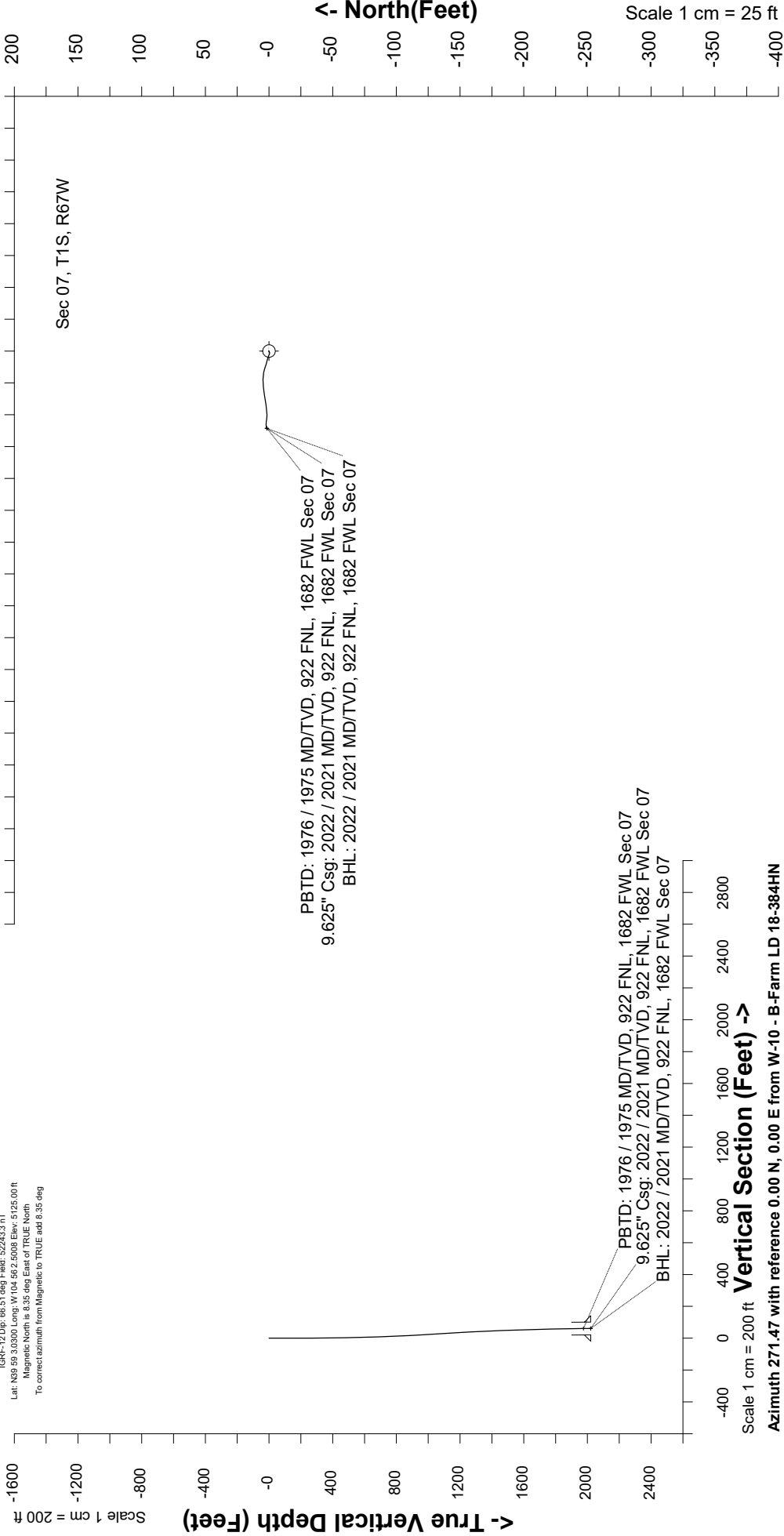
Great Western Operating Company, LLC

Created by	mmount
Date plotted	29-Apr-2020
Plot reference is B-Farm LD 18-384HN (AWB).	
Ref wellpath is B-Farm LD 18-384HN (AWP#1).	
Coordinates are in Feet reference W-10 - B-Farm LD 18-384HN.	
True Vertical Depths are reference Rig Datum.	
Measured Depths are reference Rig Datum.	
Rig Datum: Actual Datum #1	
Rig Datum to Mean Sea Level: 5131.00 ft	
Plot North is aligned to TRUE North.	

Location	Colorado	Slot	W-10 - B-Farm LD 18-384HN
Field	Wattenburg	Well	B-Farm LD 18-384HN
Installation	B-Farm	Wellbore	B-Farm LD 18-384HN (AWB)

East (Feet) ->

Scale 1 cm = 25 ft



Sep-8-2016
IGRF-12 Dip: 66.51 deg Field: 52243.3 nT
Lat: N39 59 3.0300 Long: W104 59 2.5008 Elev: 5125.00 ft
Magnetic North is 9.35 deg East of TRUE North
To correct azimuth from Magnetic to TRUE add 8.35 deg

Vertical Section (Feet) ->

Scale 1 cm = 200 ft
Azimuth 271.47 with reference 0.00 N, 0.00 E from W-10 - B-Farm LD 18-384HN

Great Western Operating Co, LLC
 Directional Survey Report
 Wellpath: B-Farm LD 18-384HN
 MDs and TVDs are from Rig Floor 5131.0ft above Mean Sea Level

MD[ft]	Inc[deg]	Azi[deg]	TVD[ft]	North[ft]	East[ft]	DLS [deg/100ft]	Vertical Section[ft]
0.00	0.00	0.00	0.00	0.00	0.00		0.00
84.00	0.22	31.66	84.00	0.14	0.08	0.00	-0.08
172.00	0.13	278.02	172.00	0.30	0.07	0.00	-0.07
261.00	0.70	235.57	261.00	0.00	-0.47	0.00	0.47
353.00	0.44	248.05	352.99	-0.45	-1.27	0.00	1.25
443.00	0.83	291.73	442.99	-0.34	-2.19	0.00	2.18
533.00	1.27	291.56	532.97	0.27	-3.72	0.00	3.73
623.00	1.93	288.83	622.94	1.13	-6.09	0.00	6.11
713.00	1.80	280.83	712.89	1.88	-8.91	0.00	8.95
803.00	2.94	290.32	802.81	2.95	-12.46	0.00	12.53
893.00	3.34	280.92	892.68	4.25	-17.20	0.00	17.30
983.00	3.30	270.20	982.53	4.75	-22.37	0.00	22.48
1073.00	3.74	263.78	1072.36	4.44	-27.87	0.00	27.98
1163.00	3.47	261.58	1162.18	3.73	-33.49	0.00	33.57
1253.00	2.94	260.44	1252.04	2.95	-38.46	0.00	38.52
1343.00	2.81	263.69	1341.92	2.32	-42.93	0.00	42.97
1433.00	2.37	264.05	1431.83	1.88	-46.97	0.00	47.00
1522.00	1.93	265.89	1520.77	1.59	-50.29	0.00	50.32
1612.00	1.76	284.17	1610.72	1.82	-53.15	0.00	53.17
1702.00	1.45	271.96	1700.69	2.19	-55.62	0.00	55.66
1792.00	1.10	275.12	1790.67	2.31	-57.62	0.00	57.66
1882.00	1.19	258.95	1880.65	2.21	-59.40	0.00	59.44
1965.00	0.44	230.91	1963.64	1.84	-60.49	0.00	60.52
2022.00	0.44	230.91	2020.64	1.56	-60.83	0.00	60.85