

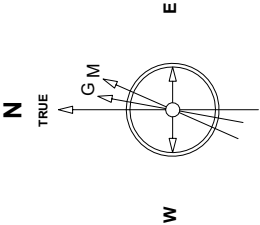
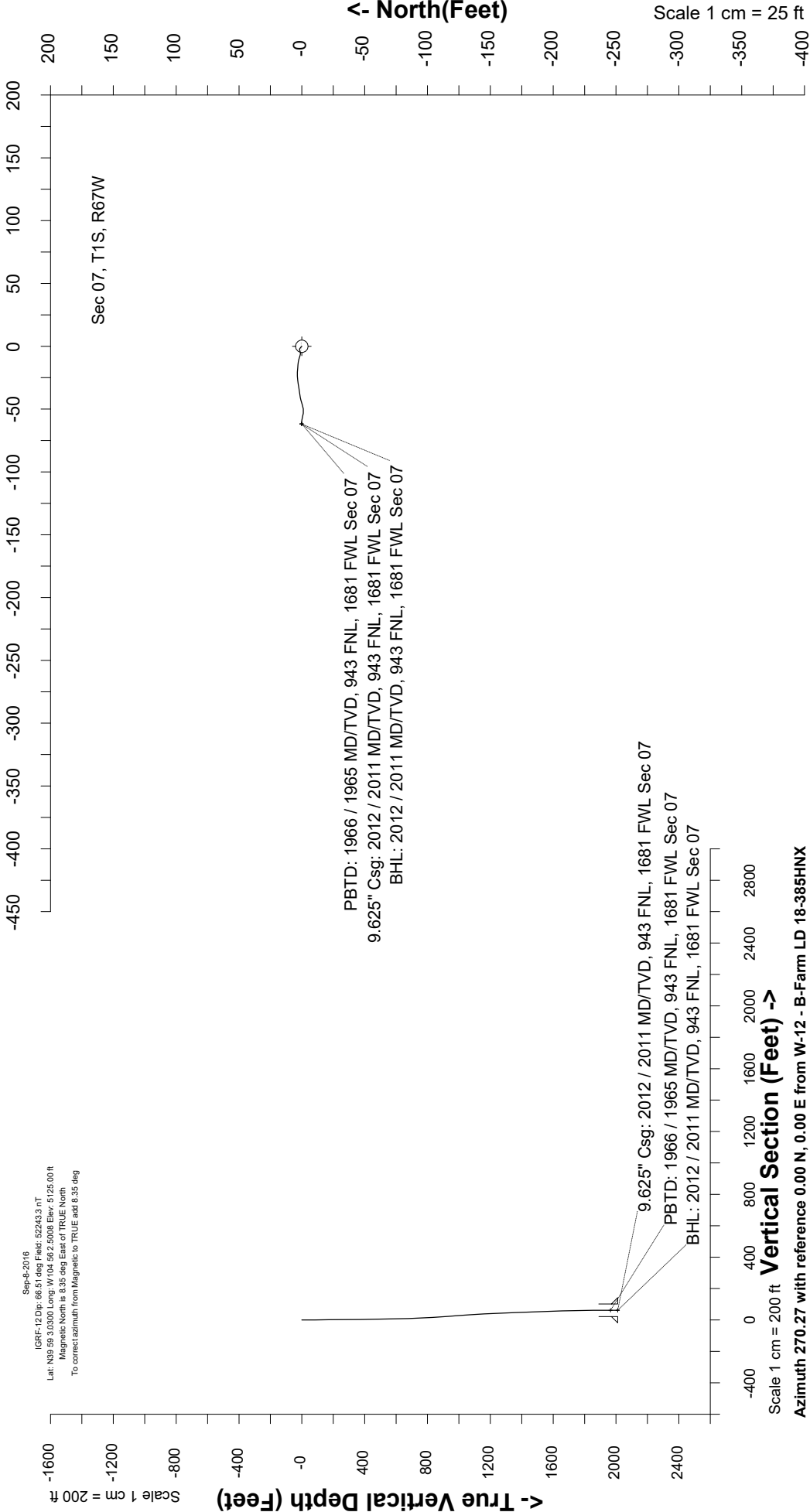
Great Western Operating Company, LLC

Created by	mmount
Date plotted	29-Apr-2020
Plot reference is B-Farm LD 18-385HNX (AWB).	
Ref wellpath is B-Farm LD 18-385HNX (AWP#1).	
Coordinates are in Feet reference W-12 - B-Farm LD 18-385HNX.	
True Vertical Depths are reference Rig Datum.	
Measured Depths are reference Rig Datum.	
Rig Datum: Actual Datum #1	
Rig Datum to Mean Sea Level: 5131.00 ft	
Plot North is aligned to TRUE North.	

Location	Colorado	Slot	W-12 - B-Farm LD 18-385HNX
Field	Wattenburg	Well	B-Farm LD 18-385HNX
Installation	B-Farm	Wellbore	B-Farm LD 18-385HNX (AWB)

Scale 1 cm = 25 ft

East (Feet) ->



Sep-8-2016  
IGRF-12 Dip: 66.51 deg Field: 52243.3 nT  
Lat: N39 59 3.0300 Long: W104 59 2.5008 Elev: 5125.00 ft  
Magnetic North is 9.35 deg East of TRUE North  
To correct azimuth from Magnetic to TRUE add 8.35 deg

Vertical Section (Feet) ->

Scale 1 cm = 200 ft  
Azimuth 270.27 with reference 0.00 N, 0.00 E from W-12 - B-Farm LD 18-385HNX

Great Western Operating Co, LLC  
 Directional Survey Report  
 Wellpath: B-Farm LD 18-385HNX  
 MDs and TVDs are from Rig Floor 5131.0ft above Mean Sea Level

MD[ft]	Inc[deg]	Azi[deg]	TVD[ft]	North[ft]	East[ft]	DLS [deg/100ft]	Vertical Section[ft]
0.00	0.00	0.00	0.00	0.00	0.00		0.00
84.00	0.92	316.08	84.00	0.49	-0.47	0.00	0.47
172.00	0.66	304.74	171.99	1.28	-1.37	0.00	1.38
261.00	0.48	301.66	260.98	1.77	-2.11	0.00	2.12
353.00	0.66	249.98	352.98	1.79	-2.94	0.00	2.95
443.00	0.79	247.35	442.97	1.38	-4.00	0.00	4.00
533.00	1.10	270.29	532.96	1.14	-5.43	0.00	5.44
623.00	1.71	286.02	622.93	1.52	-7.59	0.00	7.60
713.00	2.07	286.19	712.88	2.34	-10.44	0.00	10.45
803.00	3.34	275.73	802.78	3.05	-14.61	0.00	14.63
893.00	4.22	273.71	892.59	3.53	-20.52	0.00	20.54
983.00	4.13	262.11	982.35	3.30	-27.04	0.00	27.05
1073.00	3.47	260.71	1072.15	2.42	-32.94	0.00	32.95
1163.00	3.56	261.94	1161.98	1.58	-38.39	0.00	38.40
1253.00	2.46	255.52	1251.86	0.71	-43.03	0.00	43.03
1343.00	2.29	250.16	1341.78	-0.38	-46.59	0.00	46.59
1433.00	2.07	262.81	1431.71	-1.20	-49.89	0.00	49.89
1522.00	2.33	278.02	1520.65	-1.15	-53.28	0.00	53.27
1612.00	1.85	285.05	1610.59	-0.51	-56.49	0.00	56.49
1702.00	1.45	278.02	1700.55	0.02	-59.03	0.00	59.02
1792.00	0.62	262.90	1790.54	0.12	-60.64	0.00	60.64
1882.00	0.48	240.75	1880.53	-0.12	-61.45	0.00	61.45
1955.00	0.35	350.57	1953.53	-0.05	-61.75	0.00	61.75
2012.00	0.35	350.57	2010.53	0.29	-61.81	0.00	61.81