

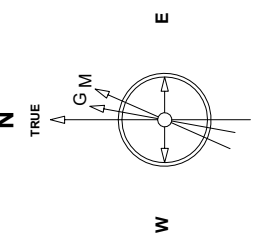
Great Western Operating Company, LLC

Location	Colorado	Slot	W-17 - B-Farm LD 18-388HNX
Field	Wattenburg	Well	B-Farm LD 18-388HNX
Installation	B-Farm	Wellbore	B-Farm LD 18-388HNX (AWB)

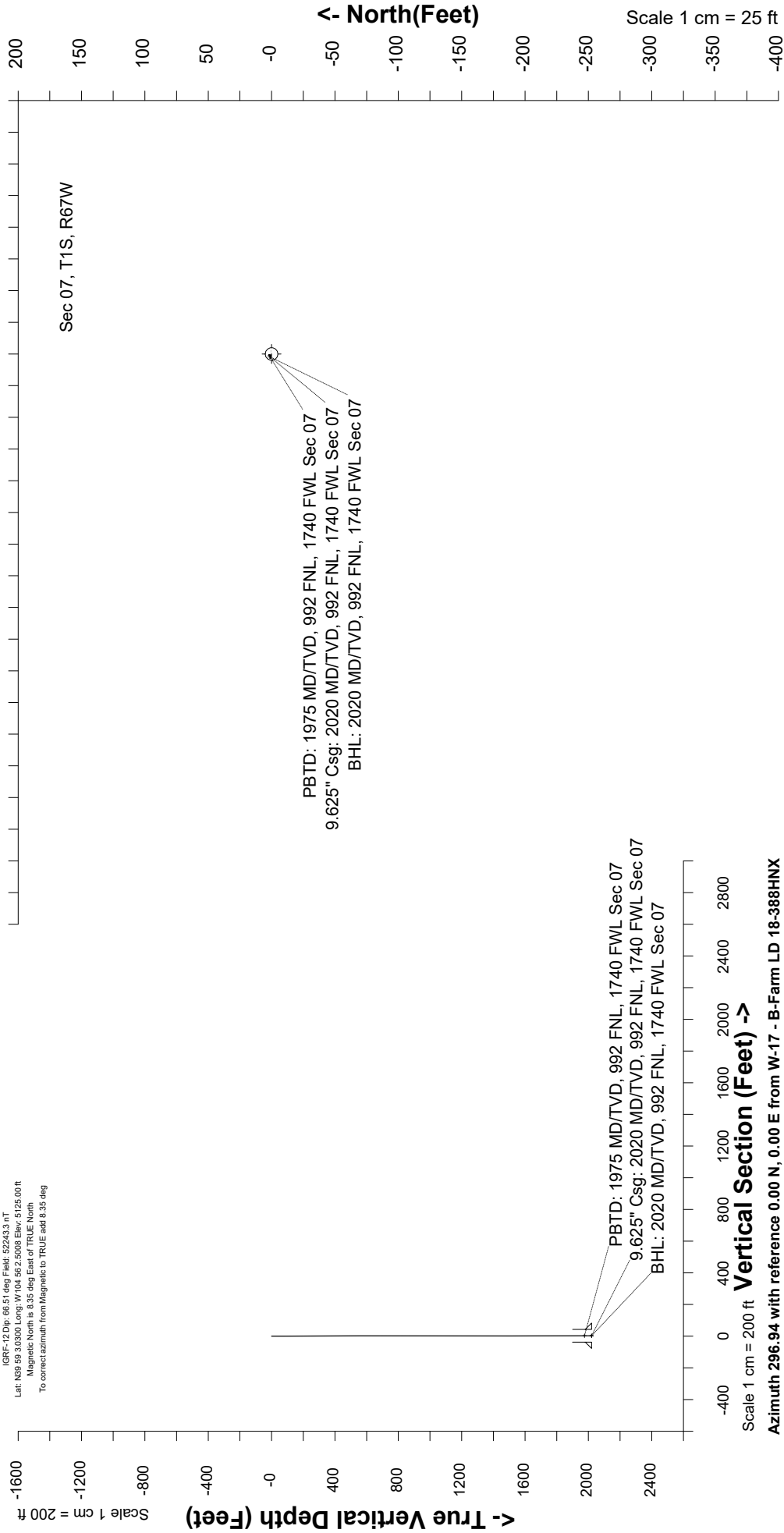
Scale 1 cm = 25 ft

East (Feet) ->

Created by	mmount
Date plotted	29-Apr-2020
Plot reference is	B-Farm LD 18-388HNX (AWB).
Ref wellpath is	B-Farm LD 18-388HNX (AWP#1).
Coordinates are in	Feet reference W-17 - B-Farm LD 18-388HNX.
True Vertical Depths are	reference Rig Datum.
Measured Depths are	reference Rig Datum.
Rig Datum:	Actual Datum #1
Rig Datum to Mean Sea Level:	5131.00 ft.
Plot North is aligned to	TRUE North.



Sep-8-2016
 IGRF-12 Dip: 66.51 deg Field: 52243.3 nT
 Lat: N39 59 3.0300 Long: W 104 59 2.5008 Elev: 5125.00 ft
 Magnetic North is 8.35 deg East of TRUE North
 To correct azimuth from Magnetic to TRUE add 8.35 deg



Scale 1 cm = 200 ft

Vertical Section (Feet) ->

Azimuth 296.94 with reference 0.00 N, 0.00 E from W-17 - B-Farm LD 18-388HNX

Great Western Operating Co, LLC
 Directional Survey Report
 Wellpath: B-Farm LD 18-388HNX
 MDs and TVDs are from Rig Floor 5131.0ft above Mean Sea Level

MD[ft]	Inc[deg]	Azi[deg]	TVD[ft]	North[ft]	East[ft]	DLS [deg/100ft]	Vertical Section[ft]
0.00	0.00	0.00	0.00	0.00	0.00		0.00
84.00	0.53	282.77	84.00	0.09	-0.38	0.00	0.38
172.00	0.35	260.88	172.00	0.13	-1.04	0.00	0.99
262.00	0.18	310.98	262.00	0.18	-1.42	0.00	1.35
354.00	0.18	1.78	353.99	0.42	-1.52	0.00	1.55
444.00	0.26	11.27	443.99	0.76	-1.48	0.00	1.66
534.00	0.48	41.24	533.99	1.25	-1.19	0.00	1.63
624.00	0.09	2.83	623.99	1.60	-0.94	0.00	1.56
714.00	0.26	33.42	713.99	1.84	-0.82	0.00	1.57
804.00	0.26	345.17	803.99	2.21	-0.76	0.00	1.68
894.00	0.18	278.02	893.99	2.43	-0.96	0.00	1.95
984.00	0.04	98.02	983.99	2.44	-1.06	0.00	2.06
1074.00	0.18	267.74	1073.99	2.43	-1.17	0.00	2.15
1163.00	0.35	117.53	1162.99	2.30	-1.07	0.00	2.00
1253.00	0.53	156.82	1252.99	1.79	-0.67	0.00	1.40
1343.00	0.13	178.88	1342.98	1.31	-0.50	0.00	1.04
1433.00	0.22	248.75	1432.98	1.14	-0.66	0.00	1.10
1523.00	0.26	278.02	1522.98	1.11	-1.02	0.00	1.41
1613.00	0.09	223.53	1612.98	1.09	-1.27	0.00	1.63
1703.00	0.44	303.24	1702.98	1.22	-1.61	0.00	1.99
1793.00	0.22	251.30	1792.98	1.36	-2.06	0.00	2.45
1883.00	0.09	231.26	1882.98	1.26	-2.28	0.00	2.60
1963.00	0.04	143.20	1962.98	1.20	-2.31	0.00	2.60
2020.00	0.04	143.20	2019.98	1.16	-2.29	0.00	2.57