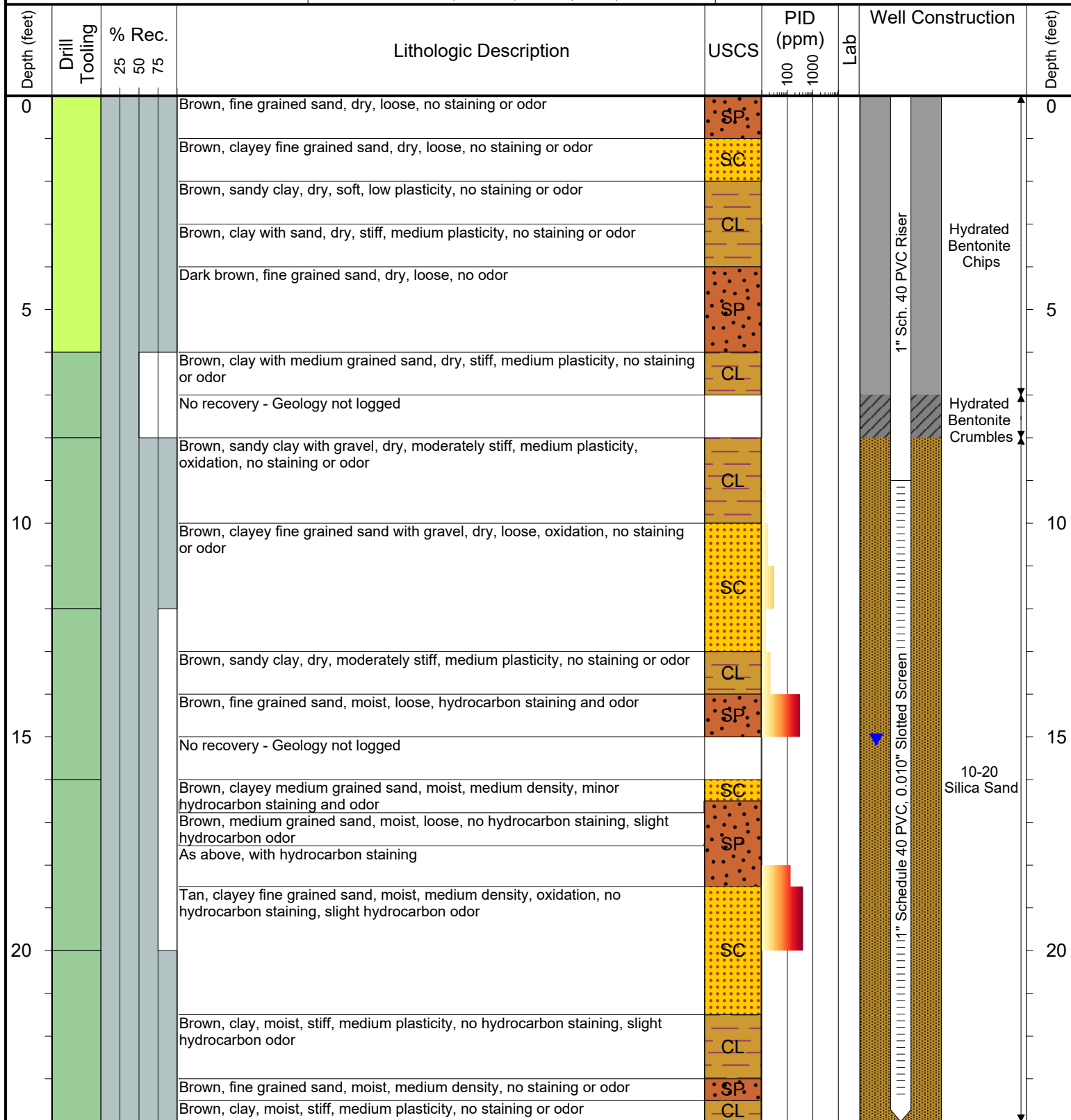




6855 W. 119th Ave
Broomfield, Colorado 80020

CLIENT: Kerr-McGee Oil and Gas Onshore LP	Brown 32-35
LOGGED BY: Brandon LeVasseur	
PROJECT MANAGER: Robert Cornez	BORING / WELL ID: BH01
DRILLING CONTRACTOR: Tasman Geosciences, Inc.	
DRILLING EQUIPMENT: AMS Powerprobe 9300-SK	SURFACE COMPLETION: Flush Mount
DRILL BIT SIZE (INCHES): 2.375"	LATITUDE (WGS 1984): 40.180155094
DATE STARTED - COMPLETED: 6/27/19	LONGITUDE (WGS 1984): -104.751622472
TOTAL WELL DEPTH (FT. BGS): 24	CASING ELEVATION (FT. AMSL): 5002.577
DEPTH TO WATER (FT. BGS): 15.06 (7/8/19) ▼	GROUND ELEVATION (FT. AMSL): 5002.807



Drilling / Sample Method:

Macro-Core
 Hydrovac
 CME - Hollow Stem Auger
 Hand Auger
 Expendable Well Tip

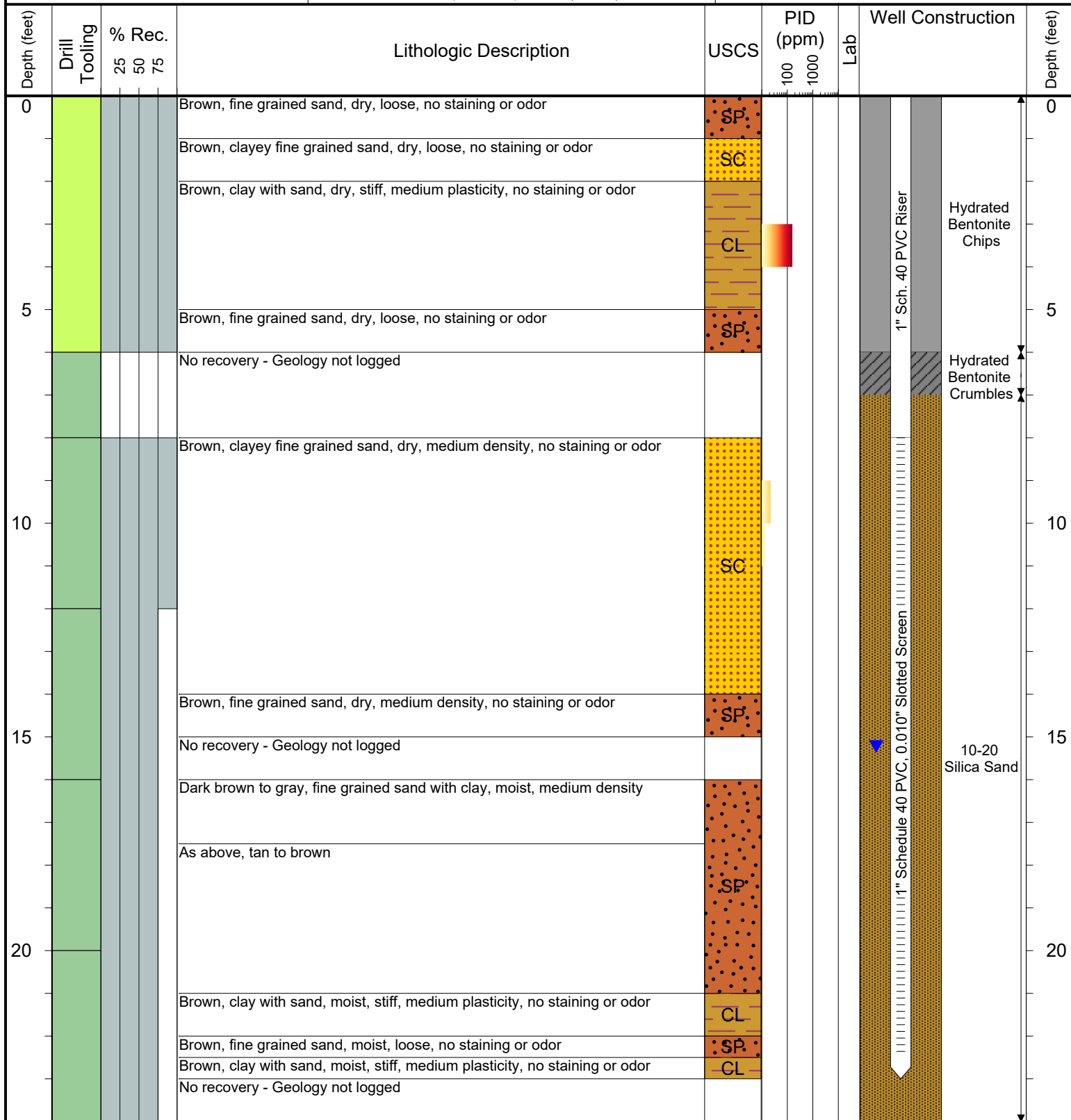
Laboratory Sample Types:

Geotechnical Lab
 Analytical Chemistry Lab



6855 W. 119th Ave
Broomfield, Colorado 80020

CLIENT: Kerr-McGee Oil and Gas Onshore LP	Brown 32-35
LOGGED BY: Brandon LeVasseur	
PROJECT MANAGER: Robert Cornez	BORING / WELL ID: BH02
DRILLING CONTRACTOR: Tasman Geosciences, Inc.	
DRILLING EQUIPMENT: AMS Powerprobe 9300-SK	SURFACE COMPLETION: Flush Mount
DRILL BIT SIZE (INCHES): 2.375"	LATITUDE (WGS 1984): 40.180070381
DATE STARTED - COMPLETED: 6/27/19	LONGITUDE (WGS 1984): -104.751436468
TOTAL WELL DEPTH (FT. BGS): 23	CASING ELEVATION (FT. AMSL): 5003.487
DEPTH TO WATER (FT. BGS): 15.22 (7/8/19) ▼	GROUND ELEVATION (FT. AMSL): 5003.677



Drilling / Sample Method:

Macro-Core
 Hydrovac
 CME - Hollow Stem Auger
 Expendable Well Tip
 Hand Auger

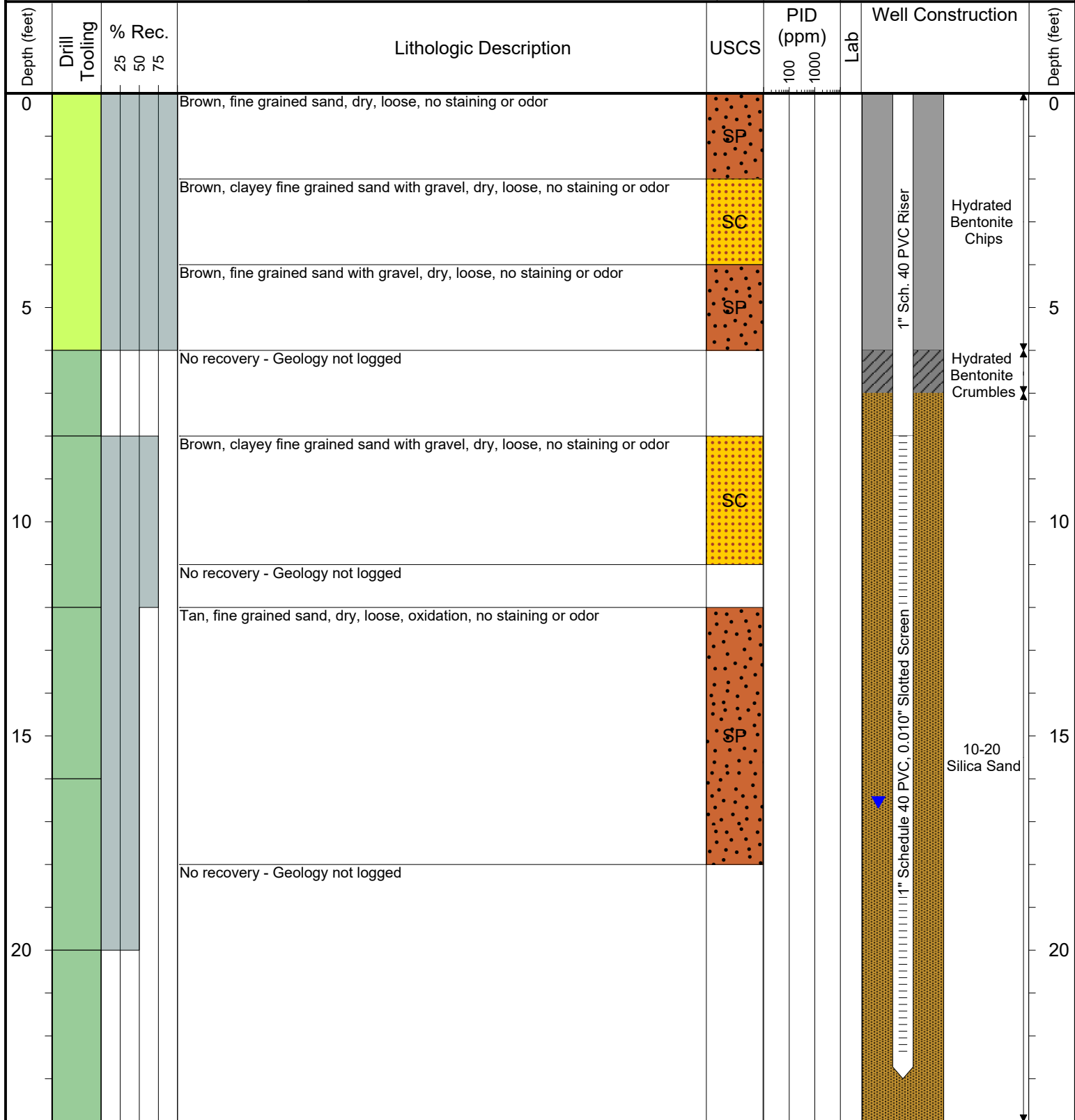
Laboratory Sample Types:

Geotechnical Lab
 Analytical Chemistry Lab



6855 W. 119th Ave
Broomfield, Colorado 80020

CLIENT: Kerr-McGee Oil and Gas Onshore LP	Brown 32-35
LOGGED BY: Brandon LeVasseur	
PROJECT MANAGER: Robert Cornez	BORING / WELL ID: BH03
DRILLING CONTRACTOR: Tasman Geosciences, Inc.	
DRILLING EQUIPMENT: AMS Powerprobe 9300-SK	SURFACE COMPLETION: Flush Mount
DRILL BIT SIZE (INCHES): 2.375"	LATITUDE (WGS 1984): 40.18000157618
DATE STARTED - COMPLETED: 6/27/19	LONGITUDE (WGS 1984): -104.75172676346
TOTAL WELL DEPTH (FT. BGS): 23	CASING ELEVATION (FT. AMSL): 5004.907
DEPTH TO WATER (FT. BGS): 16.55 (7/8/19) ▼	GROUND ELEVATION (FT. AMSL): 5005.087



Drilling / Sample Method:

- Macro-Core
- Hydrovac
- CME - Hollow Stem Auger
- Expendable Well Tip
- Hand Auger

Laboratory Sample Types:

- Geotechnical Lab
- Analytical Chemistry Lab



6855 W. 119th Ave
Broomfield, Colorado 80020

CLIENT: Kerr-McGee Oil and Gas Onshore LP

LOGGED BY: Brandon LeVasseur

PROJECT MANAGER: Robert Cornez

DRILLING CONTRACTOR: Tasman Geosciences, Inc.

DRILLING EQUIPMENT: AMS Powerprobe 9300-SK

DRILL BIT SIZE (INCHES): 2.375"

DATE STARTED - COMPLETED: 6/27/19

TOTAL WELL DEPTH (FT. BGS): 23

DEPTH TO WATER (FT. BGS): 16.23 (7/8/19)

Brown 32-35

BORING / WELL ID: BH04

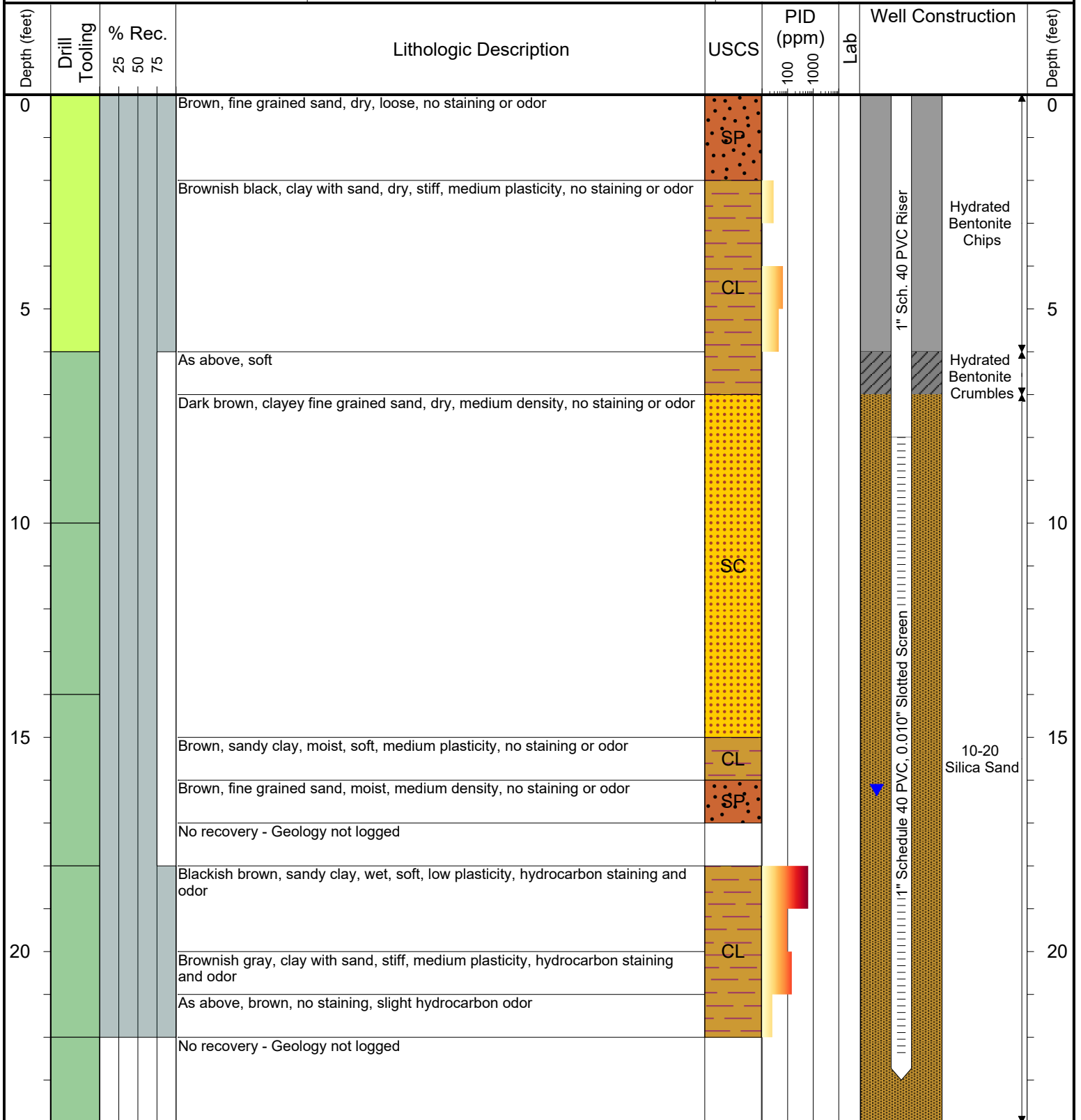
SURFACE COMPLETION: Flush Mount

LATITUDE (WGS 1984): 40.180017247

LONGITUDE (WGS 1984): -104.751577697

CASING ELEVATION (FT. AMSL): 5004.667

GROUND ELEVATION (FT. AMSL): 5004.847



Drilling / Sample Method:

Macro-Core
Expendable Well Tip
Hydrovac
Hand Auger
CME - Hollow Stem Auger

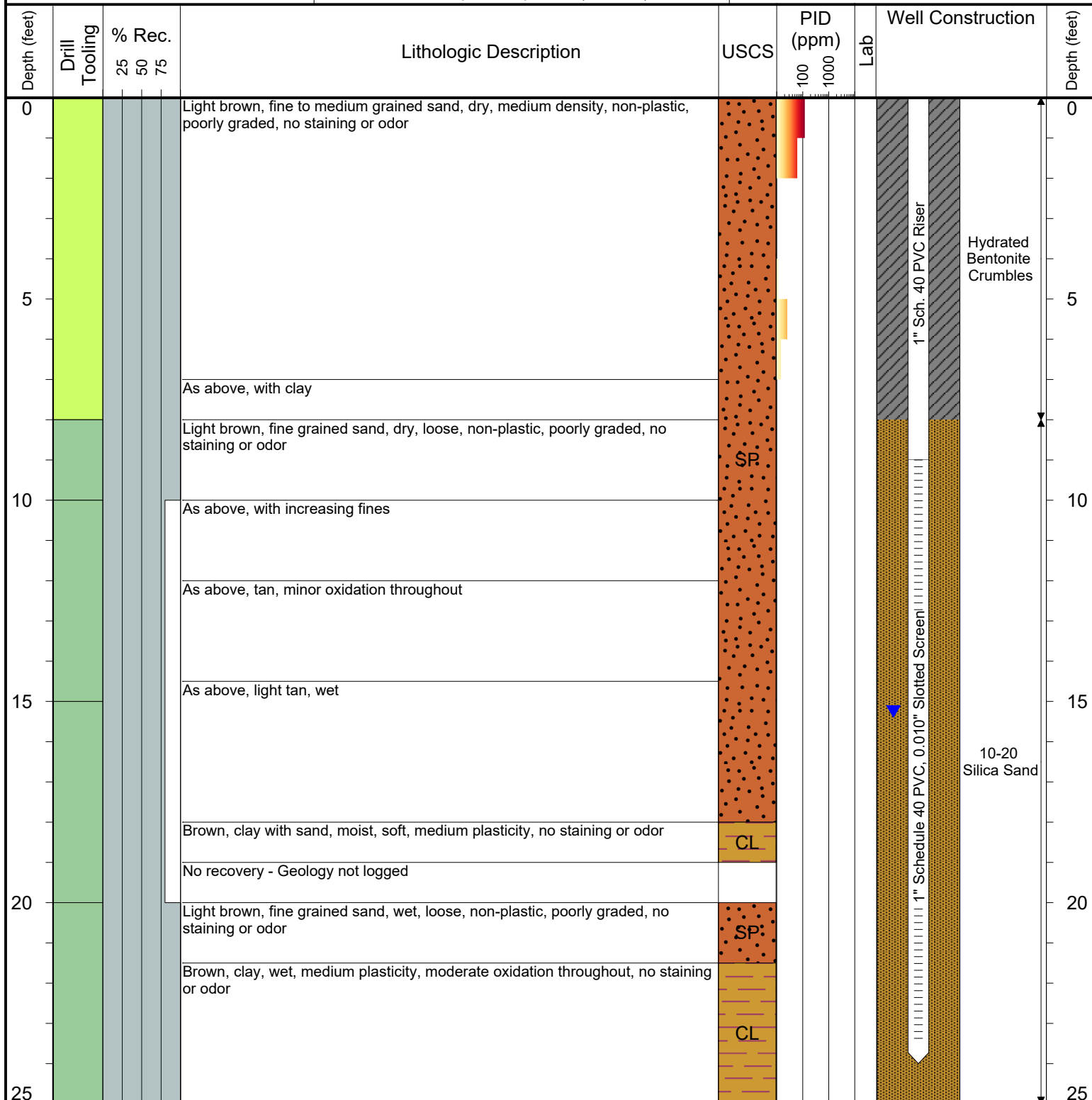
Laboratory Sample Types:

Geotechnical Lab
Analytical Chemistry Lab



6855 W. 119th Ave
Broomfield, Colorado 80020

CLIENT: Kerr-McGee Oil and Gas Onshore LP	Brown 32-35
LOGGED BY: Robert Aronoff	
PROJECT MANAGER: Robert Cornez	BORING / WELL ID: BH05
DRILLING CONTRACTOR: Tasman Geosciences, Inc.	
DRILLING EQUIPMENT: AMS Powerprobe 9300-SK	SURFACE COMPLETION: Flush Mount
DRILL BIT SIZE (INCHES): 2.375"	LATITUDE (WGS 1984): 40.180179378
DATE STARTED - COMPLETED: 8/30/2019	LONGITUDE (WGS 1984): -104.751780151
TOTAL WELL DEPTH (FT. BGS): 24	CASING ELEVATION (FT. AMSL): 5002.527
DEPTH TO WATER (FT. BGS): 15.25 (10/25/19) ▼	GROUND ELEVATION (FT. AMSL): 5002.897



Drilling / Sample Method:

Macro-Core Hydrovac CME - Hollow Stem Auger
Expendable Well Tip Hand Auger

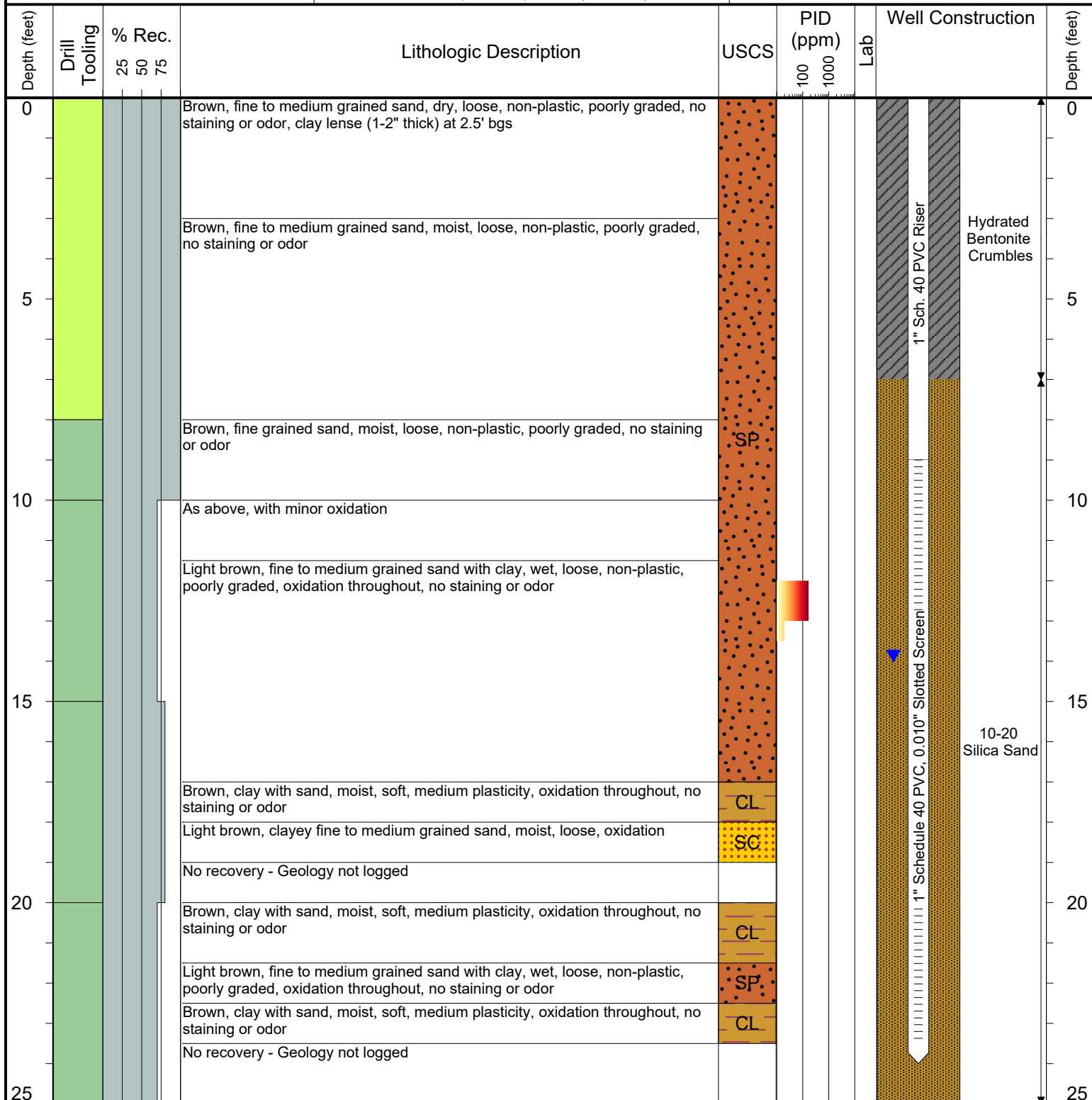
Laboratory Sample Types:

Geotechnical Lab
Analytical Chemistry Lab



6855 W. 119th Ave
Broomfield, Colorado 80020

CLIENT: Kerr-McGee Oil and Gas Onshore LP	Brown 32-35
LOGGED BY: Robert Aronoff	
PROJECT MANAGER: Robert Cornez	BORING / WELL ID: BH06
DRILLING CONTRACTOR: Tasman Geosciences, Inc.	
DRILLING EQUIPMENT: AMS Powerprobe 9300-SK	SURFACE COMPLETION: Flush Mount
DRILL BIT SIZE (INCHES): 2.375"	LATITUDE (WGS 1984): 40.180254495
DATE STARTED - COMPLETED: 8/30/2019	LONGITUDE (WGS 1984): -104.751642585
TOTAL WELL DEPTH (FT. BGS): 24	CASING ELEVATION (FT. AMSL): 5000.897
DEPTH TO WATER (FT. BGS): 13.87 (10/25/19) ▼	GROUND ELEVATION (FT. AMSL): 5001.277



Drilling / Sample Method:

Macro-Core
 Hydrovac
 CME - Hollow Stem Auger
 Expendable Well Tip
 Hand Auger

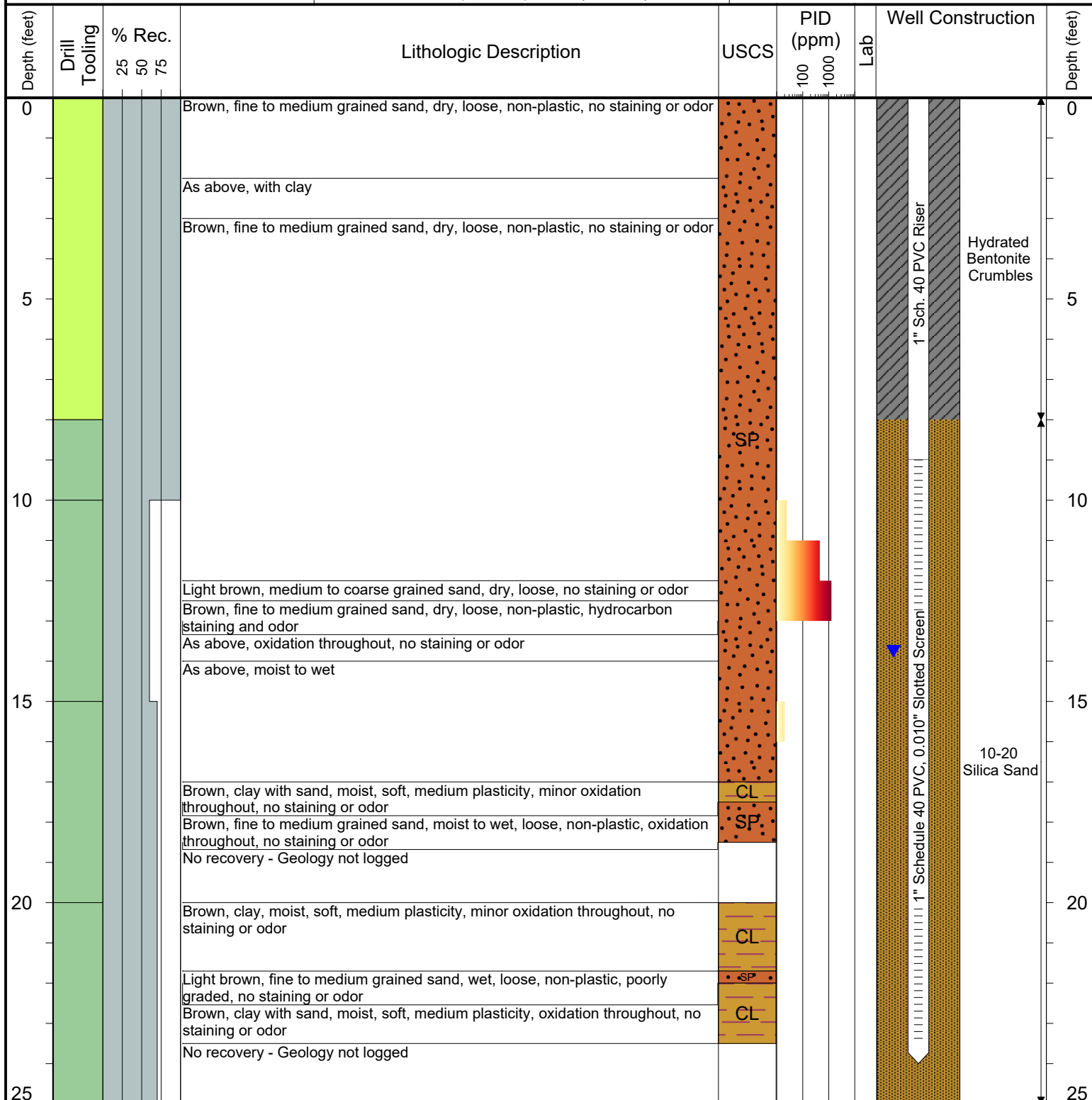
Laboratory Sample Types:

Geotechnical Lab
 Analytical Chemistry Lab



6855 W. 119th Ave
Broomfield, Colorado 80020

CLIENT: Kerr-McGee Oil and Gas Onshore LP	Brown 32-35
LOGGED BY: Robert Aronoff	
PROJECT MANAGER: Robert Cornez	BORING / WELL ID: BH07
DRILLING CONTRACTOR: Tasman Geosciences, Inc.	
DRILLING EQUIPMENT: AMS Powerprobe 9300-SK	SURFACE COMPLETION: Flush Mount
DRILL BIT SIZE (INCHES): 2.375"	LATITUDE (WGS 1984): 40.180216143
DATE STARTED - COMPLETED: 8/30/2019	LONGITUDE (WGS 1984): -104.751475289
TOTAL WELL DEPTH (FT. BGS): 24	CASING ELEVATION (FT. AMSL): 5001.097
DEPTH TO WATER (FT. BGS): 13.75 (10/25/19) ▼	GROUND ELEVATION (FT. AMSL): 5001.457



Drilling / Sample Method:

- Macro-Core
- Hydrovac
- CME - Hollow Stem Auger
- Expendable Well Tip
- Hand Auger

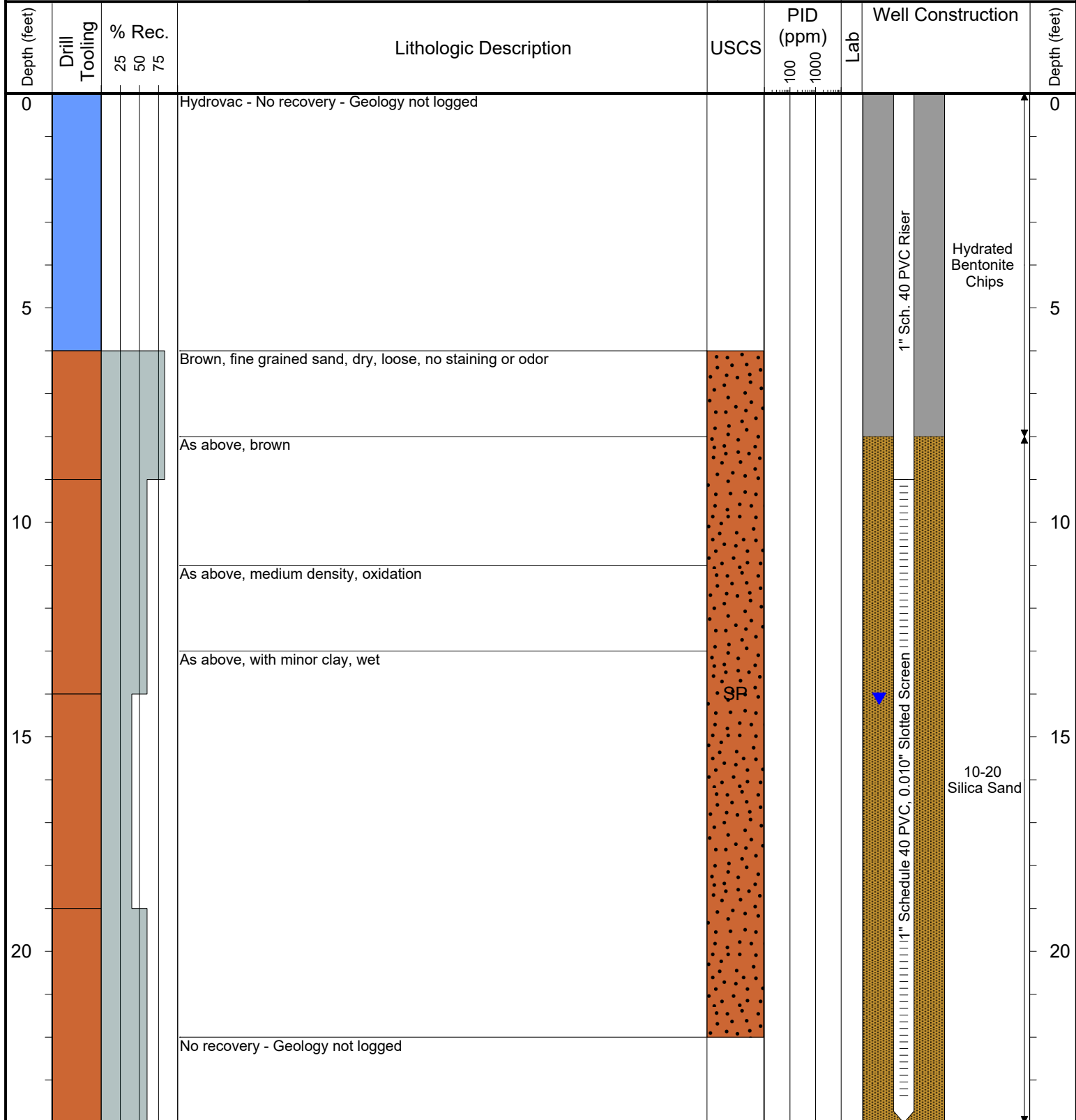
Laboratory Sample Types:

- Geotechnical Lab
- Analytical Chemistry Lab



6855 W. 119th Ave
Broomfield, Colorado 80020

CLIENT: Kerr-McGee Oil and Gas Onshore LP	Brown 32-35
LOGGED BY: Brandon LeVasseur	
PROJECT MANAGER: Robert Cornez	BORING / WELL ID: BH08
DRILLING CONTRACTOR: Site Services Drilling, LLC	
DRILLING EQUIPMENT: CME 75	SURFACE COMPLETION: Flush Mount
DRILL BIT SIZE (INCHES): 6"	LATITUDE (WGS 1984): 40.180334269
DATE STARTED - COMPLETED: 10/9/2019	LONGITUDE (WGS 1984): -104.751899194
TOTAL WELL DEPTH (FT. BGS): 24	CASING ELEVATION (FT. AMSL): 5001.017
DEPTH TO WATER (FT. BGS): 14.11 (10/25/19) ▼	GROUND ELEVATION (FT. AMSL): 5001.107



Drilling / Sample Method:

Macro-Core

Expendable Well Tip

Hydrovac

Hand Auger

CME - Hollow Stem Auger

Laboratory Sample Types:

Geotechnical Lab

Analytical Chemistry Lab



6855 W. 119th Ave
Broomfield, Colorado 80020

CLIENT: Kerr-McGee Oil and Gas Onshore LP

LOGGED BY: Brandon LeVasseur

PROJECT MANAGER: Robert Cornez

DRILLING CONTRACTOR: Site Services Drilling, LLC

DRILLING EQUIPMENT: CME 75

DRILL BIT SIZE (INCHES): 6"

DATE STARTED - COMPLETED: 10/9/2019

TOTAL WELL DEPTH (FT. BGS): 24

DEPTH TO WATER (FT. BGS): 13.59 (10/25/19) ▼

Brown 32-35

BORING / WELL ID: BH09

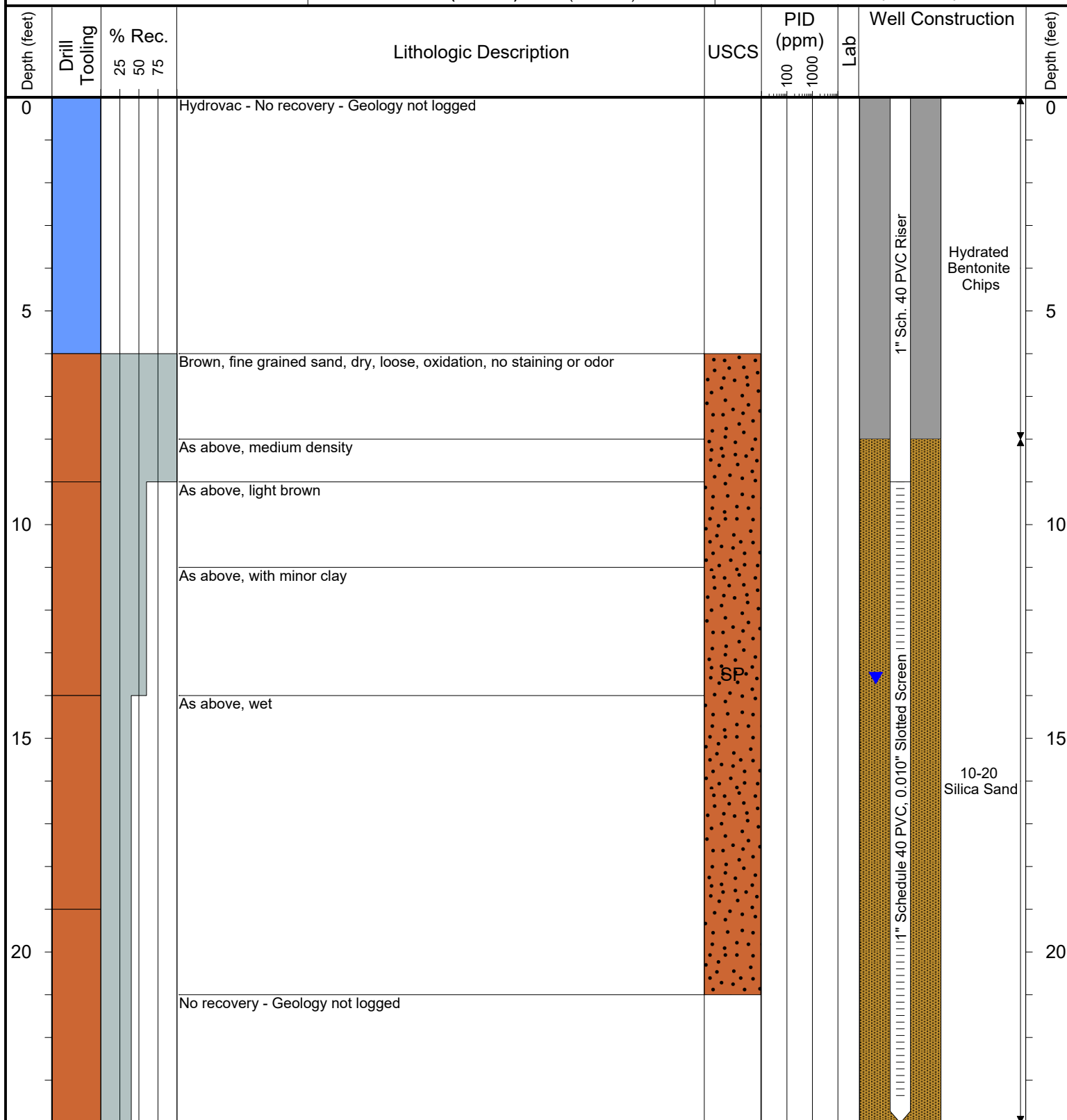
SURFACE COMPLETION: Flush Mount

LATITUDE (WGS 1984): 40.180383496

LONGITUDE (WGS 1984): -104.751709146

CASING ELEVATION (FT. AMSL): 5000.177

GROUND ELEVATION (FT. AMSL): 5000.447



Drilling / Sample Method:

Macro-Core Hydrovac CME - Hollow Stem Auger
 Expendable Well Tip Hand Auger

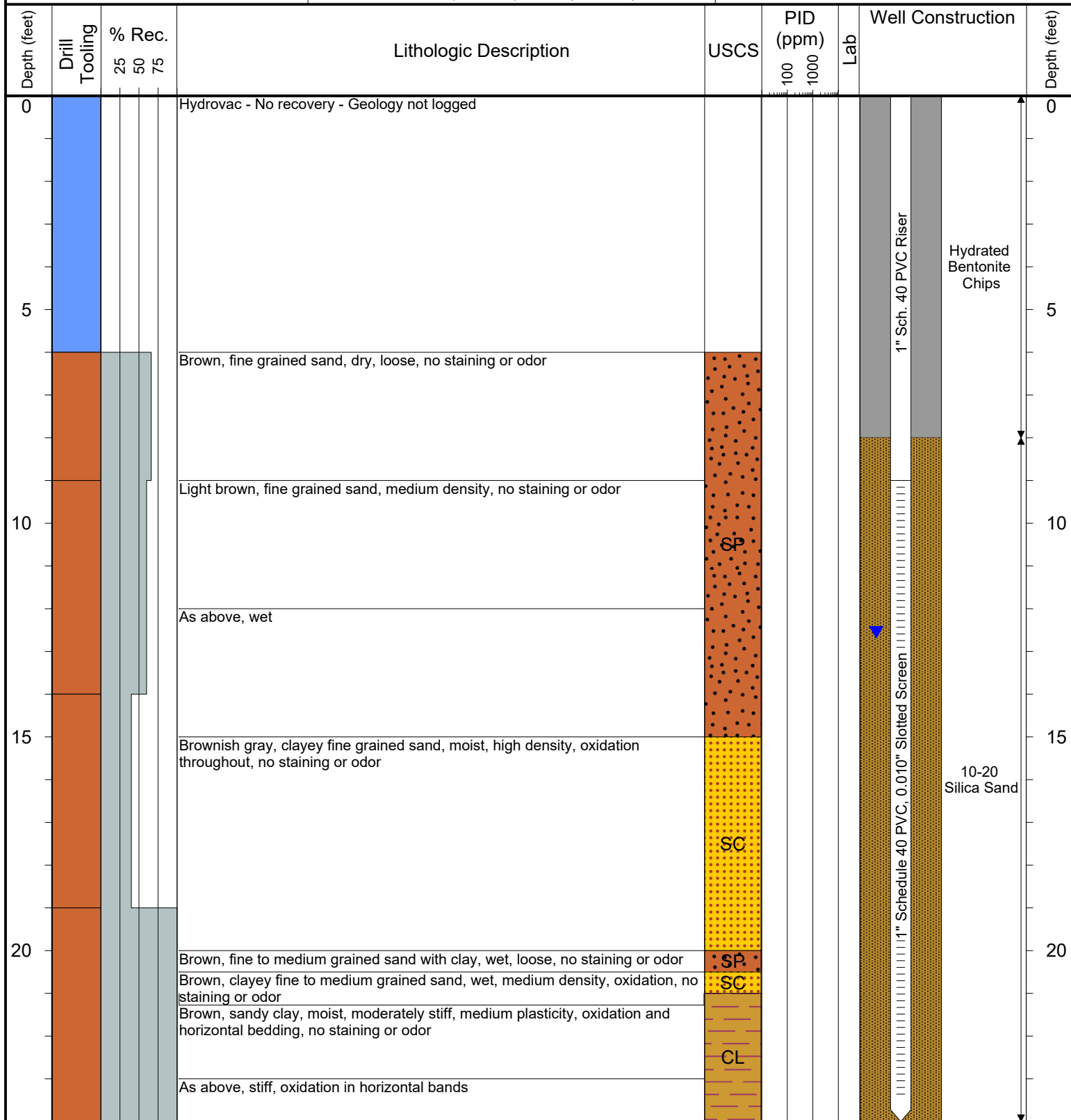
Laboratory Sample Types:

Geotechnical Lab
 Analytical Chemistry Lab



6855 W. 119th Ave
Broomfield, Colorado 80020

CLIENT: Kerr-McGee Oil and Gas Onshore LP	Brown 32-35
LOGGED BY: Brandon LeVasseur	
PROJECT MANAGER: Robert Cornez	BORING / WELL ID: BH10
DRILLING CONTRACTOR: Site Services Drilling, LLC	
DRILLING EQUIPMENT: CME 75	SURFACE COMPLETION: Flush Mount
DRILL BIT SIZE (INCHES): 6"	LATITUDE (WGS 1984): 40.180370567
DATE STARTED - COMPLETED: 10/9/2019	LONGITUDE (WGS 1984): -104.751462851
TOTAL WELL DEPTH (FT. BGS): 24	CASING ELEVATION (FT. AMSL): 4999.477
DEPTH TO WATER (FT. BGS): 12.55 (10/25/19) ▼	GROUND ELEVATION (FT. AMSL): 4999.597



Drilling / Sample Method:

Macro-Core
 Hydrovac
 CME - Hollow Stem Auger
 Expendable Well Tip
 Hand Auger

Laboratory Sample Types:

Geotechnical Lab
 Analytical Chemistry Lab