

T1N, R66W

MATCH LINE
SEE SHEET 2

WELLBORE
CONTINUES INTO
SECTION 23

NW. COR.
SEC. 26, T1N, R66W
FOUND 3 1/4" ALUM. CAP
P.L.S. NO. 13155

S 89°36'13" W 2648.25' (M)

N. 1/4 COR.
SEC. 26, T1N, R66W
FOUND 3 1/4" ALUM. CAP
L.S. NO. 12330

S 89°37'08" W 2648.14' (M)

NE. COR.
SEC. 26, T1N, R66W
FOUND 2 1/2" ALUM. CAP
P.L.S. NO. 25636

SURFACE LOCATION: NAD 83
GROUND ELEVATION= 5120.5'
LATITUDE= 40.028280°
LONGITUDE= -104.741135°
LATITUDE= 40°01'41.806"
LONGITUDE= -104°44'28.086"
HEEL LOCATION: NAD 83
LATITUDE= 40.022530°
LONGITUDE= -104.742106°
LATITUDE= 40°01'21.107"
LONGITUDE= -104°44'31.580"
BOTTOM HOLE LOCATION: NAD 83
LATITUDE= 40.043860°
LONGITUDE= -104.742513°
LATITUDE= 40°02'37.896"
LONGITUDE= -104°44'33.047"

BEIERLE 26-14HZ
SURFACE LOCATION

HEEL LOCATION

W. 1/4 COR.
SEC. 26, T1N, R66W
FOUND 3 1/4" ALUM. CAP
L.S. NO. 25937

S 89°22'18" W

2646.28' (M)

CENTER 1/4 COR.
SEC. 26, T1N, R66W
FOUND 3 1/4" ALUM. CAP
L.S. NO. 22098

26

S 89°09'49" W 2649.75' (M)

E. 1/4 COR.
SEC. 26, T1N, R66W
FOUND 3 1/4" ALUM. CAP
P.L.S. NO. 12405

S. 1/16 COR.
SEC. 26 & SEC. 27
T1N, R66W
SET 2 1/2" ALUM. CAP
P.L.S. NO. 38512

N 00°17'50" W

1309.17' (M)

N 00°17'49" W

1309.02' (M)

SW. COR.
SEC. 26, T1N, R66W
FOUND 2" ALUM. CAP
L.S. NO. 23027

S 89°33'42" W 2652.24' (M)

S. 1/4 COR.
SEC. 26, T1N, R66W
FOUND 3 1/4" ALUM. CAP
P.L.S. NO. 28656

N 00°25'41" W

2626.95' (M)

S. 1/16 COR.
SEC. 25 & SEC. 26
T1N, R66W
FOUND 2 1/2" ALUM. CAP
L.S. NO. 30120

N 00°29'36" W

1322.53' (M)

N 00°29'13" W

1322.61' (M)

SE. COR.
SEC. 26, T1N, R66W
FOUND 3 1/4" ALUM. CAP
NO NUMBER

S 89°33'25" W 2652.56' (M)

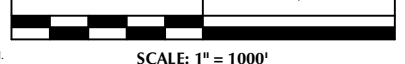
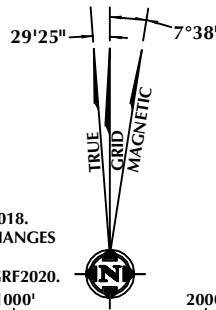
CERTIFICATE OF SURVEYOR:

THIS IS TO CERTIFY THAT THE ABOVE PLAT WAS PREPARED FROM FIELD NOTES OF ACTUAL SURVEY MADE BY ME OR UNDER MY SUPERVISION AND THAT THE SAME ARE TRUE AND CORRECT TO THE BEST OF MY KNOWLEDGE AND BELIEF. THIS CERTIFICATE DOES NOT REPRESENT A LAND SURVEY PLAT OR IMPROVEMENT SURVEY PLAT AS DEFINED BY C.R.S. 1951-102 AND CANNOT BE RELIED UPON TO DETERMINE OWNERSHIP.

Randall K. French
38512
PROFESSIONAL LAND SURVEYOR
3/17/2020
COLORADO REGISTRATION NUMBER 38512

NOTICE
ACCORDING TO COLORADO STATE LAW YOU MUST EXERCISE YOUR RIGHT TO DISCOVER SUCH DEFECT. IN NO EVENT MAY ANY ACTION BASED UPON ANY DEFECT IN THIS SURVEY BE COMMENCED MORE THAN TEN YEARS FROM THE DATE ON THE CERTIFICATION SHOWN HEREON.

NOTE:
MAGNETIC NORTH IS
CURRENT AS OF 5/7/2018.
MAGNETIC NORTH CHANGES
WEST 0°06' PER YEAR.
MAGNETIC MODEL: IGRF2020.



SCALE: 1" = 1000'

NOTES:

- ▲ INDICATES SECTION CORNER.
- INDICATES CALCULATED CORNER.
- DRAWING LATITUDE AND LONGITUDE COORDINATES ARE NAD 83 (2011)(EPOCH:2010).
- ELEVATION BASED ON NAVD88 (GEOID12B).
- BASIS OF BEARING DERIVED FROM COLORADO COORDINATE SYSTEM OF 1983 NORTH ZONE.
- ALL MEASURED DISTANCES ARE GRID.
- COMBINED SCALE FACTOR: .99972164 CALCULATED FROM THE N. 1/4 CORNER OF SECTION 26, T1N, R66W.
- OPERATOR: TRAVIS HOLLAND / PDOP = 1.3.
- SEE ADDENDUM TO WELL LOCATION CERTIFICATE FOR EXISTING IMPROVEMENTS WITHIN 500' OF THE WELL PAD.
- WELL FOOTAGES ARE MEASURED AT RIGHT ANGLES TO THE SECTION LINES.
- THE BOTTOM OF HOLE BEARS N01°19'50"W, 7771' FROM THE HEEL LOCATION.

WELL PAD - BEIERLE 2-26HZ

BEIERLE 26-14HZ
WELL LOCATION CERTIFICATE
460' FNL & 1729' FEL NWNE (SURFACE)
2555' FNL & 2001' FEL SWNE (HEEL)
LOCATED IN SECTION 26
50' FNL & 2114' FEL NWNE (BOTTOM)
LOCATED IN SECTION 23
T1N, R66W, 6TH P.M.
WELD COUNTY, COLORADO

Kerr-McGee Oil &
Gas Onshore L.P.
1099 18th Street
Denver, Colorado 80202



CONSULTING, LLC

SHERIDAN OFFICE
1095 Saberton Avenue
Sheridan, Wyoming 82801
Phone 307-674-0609

LOVELAND OFFICE
6706 North Franklin Avenue
Loveland, Colorado 80538
Phone 970-776-4331

DRAFTED BY:	LMO	CHECKED BY:	RKF	SHEET NO:
DATE DRAFTED:	8/22/18	DATE SURVEYED:	5/7/18	1
REVISED:	3/17/2020	FILE NAME:	17-102	1 OF 2

T1N, R66W

NW. COR.
SEC. 23, T1N, R66W
FOUND 2 1/2" ALUM. CAP
L.S. NO. 30120

S 89°32'58" W 2653.78' (M)

S 89°35'35" W 2653.13' (M)

NE. COR.
SEC. 23, T1N, R66W
FOUND 2 1/2" ALUM. CAP
P.L.S. NO. 28656

SURFACE LOCATION: NAD 83
GROUND ELEVATION= 5120.5'
LATITUDE= 40.028280°
LONGITUDE= -104.741135°
HEEL LOCATION: NAD 83
LATITUDE= 40.022530°
LONGITUDE= -104.742106°
LATITUDE= 40°01'41.806"
LONGITUDE= -104°44'28.086"
BOTTOM HOLE LOCATION: NAD 83
LATITUDE= 40.043860°
LONGITUDE= -104.742513°
LATITUDE= 40°02'37.896"
LONGITUDE= -104°44'33.047"

23

W. 1/4 COR.
SEC. 23, T1N, R66W
FOUND 2" ALUM. CAP
L.S. NO. 23027

S 89°34'58" W
2650.52' (M)

CENTER 1/4 COR.
SEC. 23, T1N, R66W
FOUND 1 1/2" ALUM. CAP
L.S. NO. 2682

S 89°35'38" W
2650.66' (M)

E. 1/4 COR.
SEC. 23, T1N, R66W
FOUND 2 1/2" ALUM. CAP
P.L.S. NO. 37552

SW. COR.
SEC. 23, T1N, R66W
FOUND 3 1/4" ALUM. CAP
P.L.S. NO. 13155

S 89°36'13" W 2648.25' (M)

S. 1/4 COR.
SEC. 23, T1N, R66W
FOUND 3 1/4" ALUM. CAP
L.S. NO. 12330

S 89°37'08" W 2648.14' (M)

SE. COR.
SEC. 23, T1N, R66W
FOUND 2 1/2" ALUM. CAP
P.L.S. NO. 25636

MATCH LINE
SEE SHEET 1

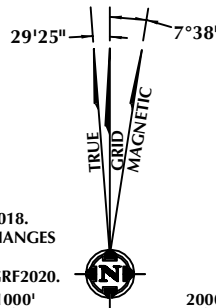
CERTIFICATE OF SURVEYOR:

THIS IS TO CERTIFY THAT THE ABOVE PLAT WAS PREPARED FROM FIELD NOTES OF ACTUAL SURVEY MADE BY ME OR UNDER MY SUPERVISION AND TO THE BEST OF MY KNOWLEDGE AND BELIEF THIS CERTIFICATE DOES NOT REPRESENT A LAND SURVEY PLAT OR IMPROVEMENT SURVEY PLAT AS DEFINED BY C.R.S. 1951-102 AND CANNOT BE RELIED UPON TO DETERMINE OWNERSHIP.

Randall K. French
PROFESSIONAL LAND SURVEYOR
3/17/2020
COLORADO REGISTRATION NUMBER 38512

NOTICE
ACCORDING TO COLORADO STATE LAW YOU MUST TAKE NOTICE OF ANY ACTION BASED UPON ANY DEFECT IN THIS SURVEY WITHIN THREE YEARS AFTER YOU FIRST DISCOVER SUCH DEFECT. IN NO EVENT MAY ANY ACTION BASED UPON ANY DEFECT IN THIS SURVEY BE COMMENCED MORE THAN TEN YEARS FROM THE DATE ON THE CERTIFICATION SHOWN HEREON.

NOTE:
MAGNETIC NORTH IS
CURRENT AS OF 5/7/2018.
MAGNETIC NORTH CHANGES
WEST 0°06' PER YEAR.
MAGNETIC MODEL: IGRF2020.



SCALE: 1" = 1000'

NOTES:

- ▲ INDICATES SECTION CORNER.
- INDICATES CALCULATED CORNER.
- DRAWING LATITUDE AND LONGITUDE COORDINATES ARE NAD 83 (2011)(EPOCH:2010).
- ELEVATION BASED ON NAVD88 (GEOID12B).
- BASIS OF BEARING DERIVED FROM COLORADO COORDINATE SYSTEM OF 1983 NORTH ZONE.
- ALL MEASURED DISTANCES ARE GRID.
- COMBINED SCALE FACTOR: .99972164 CALCULATED FROM THE N. 1/4 CORNER OF SECTION 26, T1N, R66W.
- OPERATOR: TRAVIS HOLLAND / PDOP = 1.3.
- SEE ADDENDUM TO WELL LOCATION CERTIFICATE FOR EXISTING IMPROVEMENTS WITHIN 500' OF THE WELL PAD.
- WELL FOOTAGES ARE MEASURED AT RIGHT ANGLES TO THE SECTION LINES.
- THE BOTTOM OF HOLE BEARS N01°19'50"W, 7771' FROM THE HEEL LOCATION.

WELL PAD - BEIERLE 2-26HZ

BEIERLE 26-14HZ
WELL LOCATION CERTIFICATE
460' FNL & 1729' FEL NWNE (SURFACE)
2555' FNL & 2001' FEL SWNE (HEEL)
LOCATED IN SECTION 26
50' FNL & 2114' FEL NWNE (BOTTOM)
LOCATED IN SECTION 23
T1N, R66W, 6TH P.M.
WELD COUNTY, COLORADO

Kerr-McGee Oil &
Gas Onshore L.P.

1099 18th Street
Denver, Colorado 80202

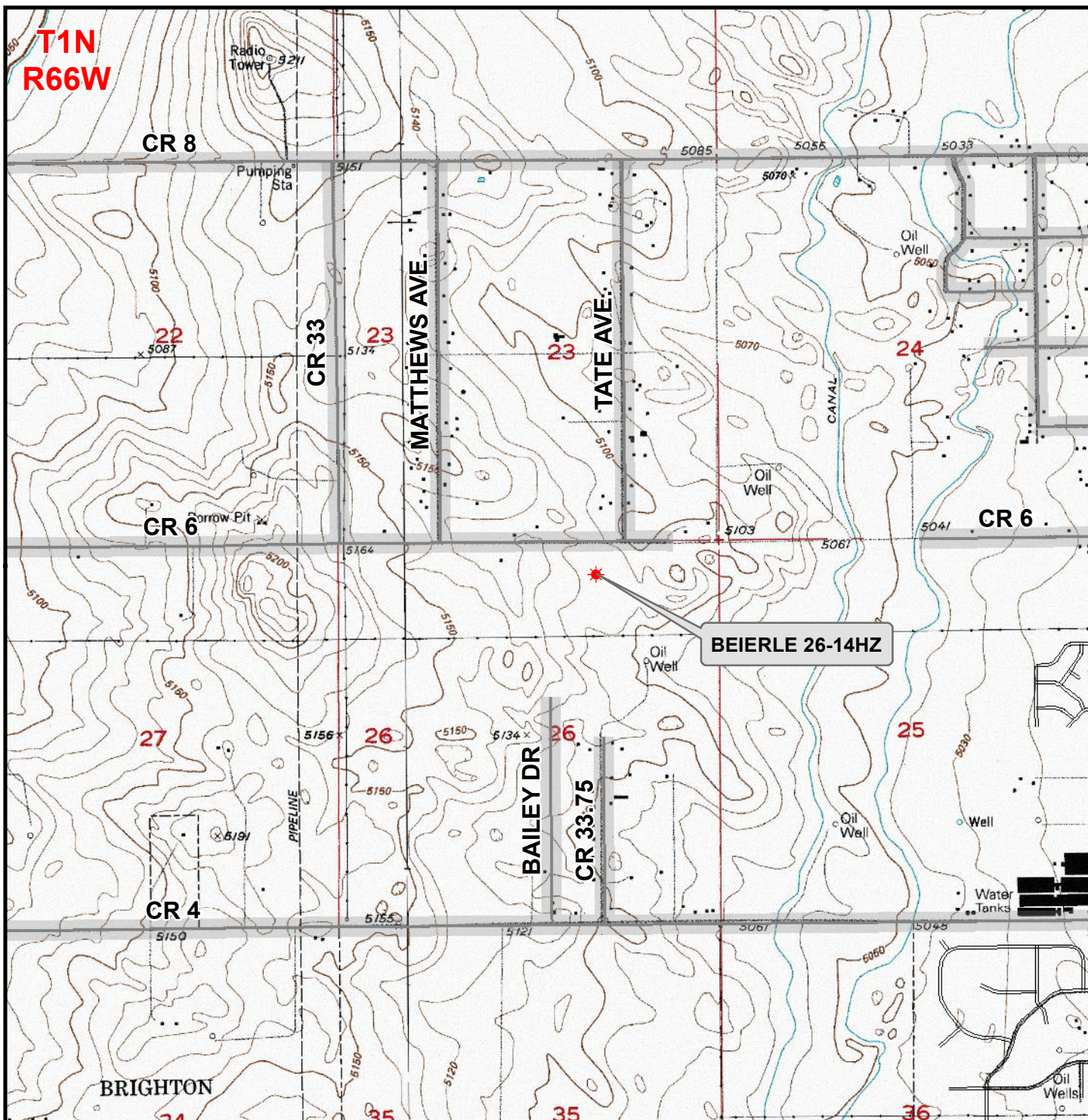


CONSULTING, LLC

SHERIDAN OFFICE
1095 Saberton Avenue
Sheridan, Wyoming 82801
Phone 307-674-0609

LOVELAND OFFICE
6706 North Franklin Avenue
Loveland, Colorado 80538
Phone 970-776-4331

DRAFTED BY:	LMO	CHECKED BY:	RKF	SHEET NO:
DATE DRAFTED:	8/22/18	DATE SURVEYED:	5/7/18	2
REVISED:	3/17/2020	FILE NAME:	17-102	2 OF 2



Legend

- ★ Well - Proposed
 Road - Primitive - Existing
 Road - County - Existing
 Road - Improved - Existing
 Road - Highway - Existing

WELL PAD - BEIERLE 2-26HZ
GENERAL LOCATION MAP
BEIERLE 26-14HZ
LOCATED IN SECTION 26
T1N, R66W, 6th P.M.
WELD COUNTY, COLORADO

Kerr-McGee Oil &
Gas Onshore L.P.

1099 18th Street
 Denver, Colorado 80202



CONSULTING, LLC

SHERIDAN OFFICE
 1095 Saberton Avenue
 Sheridan, Wyoming 82801
 Phone 307-674-0609

LOVELAND OFFICE
 1635 Foxtail Drive, Suite 204
 Loveland, Colorado 80538
 Phone 970-776-4331



SCALE: 1" = 2,000ft

NAD83 CO-Nft

DRAWN: DP

DATE: 24 May 2018

REVISED:

DATE: