

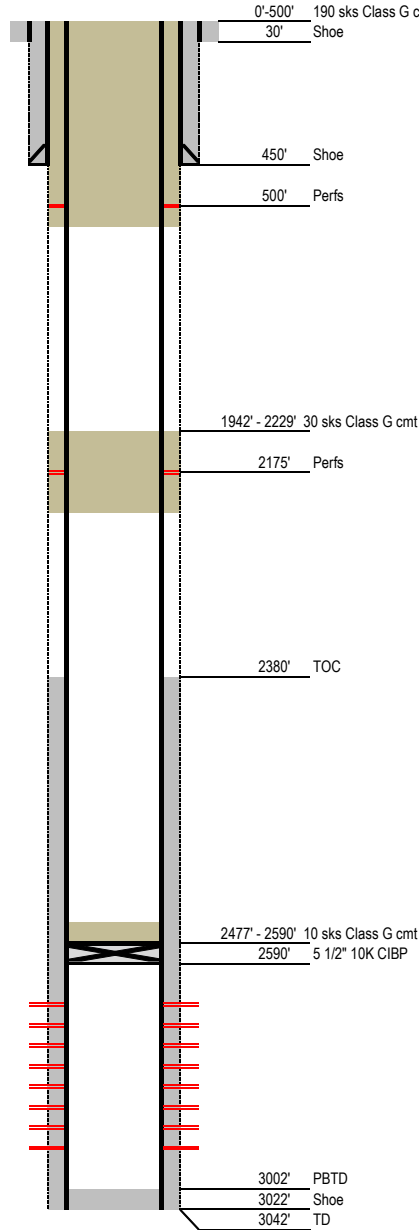
Laramie Energy

Current Wellbore Diagram

Not to Scale

FEDERAL WELL: YES ☒ NO ☐

Geological Tops	Depth (MD)
Cameo	2128'
Rollins	2480'
Cozzette	2630'
Corcoran	2831'
Sego	2978'



Well Name Horseshoe Canyon 3-28
API 05-077-08656-00
Surface Location NWNW S28, T9S, R97W
GPS Coordinates 39.248667 -108.227953
Bottom Hole Loc 1094 FNL & 1315 FEL SEC 28 T9S R97W
Field Shire Gulch # 77450
County, State Mesa, CO # 077
Spud Date
Completion Date 3/9/1993
Diagram Date 7/13/2020
KB Elevation 5411'
KB 11'
GL Elevation 5400'

Hole -
Conductor 16" .25" wall @ 30'
Cement Surface

Surface Hole 12.25" @ Surface'
Casing 8 5/8" 24.0 lb/ft K-55 at 450'
TOC Surface

Production Hole 7.875" @ 3042'
Casing 5 1/2" 15.5 # K-55 at 3042'
Cement
TOC 2380' Schlumberger CBL dated 2/5/1993

Tubing

Perforations	Top	Bottom
	2634'	2902'