

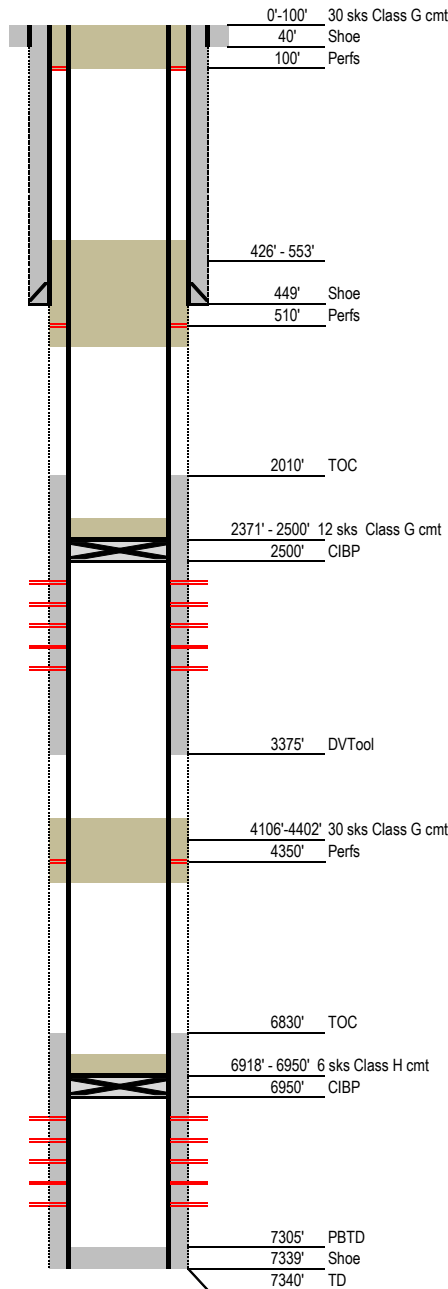
Laramie Energy

Current Wellbore Diagram

Not to Scale

FEDERAL WELL: YES NO

Geological Tops	Depth (MD)
Cameo	2087'
Rollins	2363'
Cozzette	2562'
Corcoran	2757'
Sego	2908'
Mancos	3043'
Frontier	6866'
Dakota	6986'
Cedar Mountain	7151'
Morrison	7204'



Well Name Horseshoe Canyon 3-29
API 05-077-08658-00
Surface Location NWNW S29, T9S, R97W
GPS Coordinates 39.249020 -108.248962
Bottom Hole Loc 900 FNL & 688 FWL SEC 29 T9S R97W
Field Shire Gulch # 77450
County, State Mesa, CO # 077
Spud Date
Completion Date 12/27/1992
Diagram Date 7/8/2020
KB Elevation 5509'
KB 13'
GL Elevation 5496'

Hole -
Conductor 16" .25" wall @ 40'
Cement Surface

Surface Hole 12.25" @ 450'
Casing 8.625" 24# K55 STC @ 449'
Cement 305sx reg w/3% CaCl
TOC Surface

Production Hole 7.875" @ 7340'
Casing 5.5" 15.5# K55 LTC @ 7339"
Cement 1st stage CBL 6840' 2nd stage 2900
TOC 2010' Schlumberger CBL dated 12/27/1992

Tubing 2 3/8" 4.7 ppf J55 EUE @ 7030'

Perforations	Top	Bottom
	2580'	2618'
	2797'	2853'
	7041'	7076'
	7152'	7203'