

PROPETRO**JOB LOG****TICKET NUMBER:WC-51****Cementing - Rocky Mountain Division**

P.O. BOX 827 - VERNAL UT, 84078 - (435) 789-7407

COMPANY NAME:LARAMIE ENERGY**DATE:7/6/20****COUNTY:MESA,COLORADO****LEASE NAME: HORSESHOE CANYON 3-29****RIG NO:ENSIGN**

| DECIPTION | TIME | RATE | PSI | VOLUME |
|--------------------------------|-------|------|--------|--------|
| LEFT SHOP | 5:00 | | | |
| ARRIVE ON LOCATION | 8:37 | | | |
| GO TO PREV LOCATION FOR PUMP | 8:37 | | | |
| ARRIVE ON LOC | 9:05 | | | |
| RIG UP SAFETY MEETING | 9:10 | | | |
| SPOT TRUCKS/START RIG UP | 9:15 | | | |
| GET NUMBERS FROM COMP MAN | 9:31 | | | |
| SAFETY MEETING | 10:20 | | | |
| PRIME UP PUMP | 10:35 | 10 | 300 | 10 |
| FILL PUMP AND LINES | 10:37 | 2 | 50 | 0 |
| PSI TEST | 10:38 | 0.5 | 0-2500 | 2 |
| PLUG #1 E.O.T @ 4,365' | | | | |
| START H2O | 10:38 | 1.6 | 0 | 0 |
| NO CIRCULATION | 10:41 | 3.4 | 130 | 10 |
| " | 10:43 | 3.6 | 310 | 20 |
| END H2O/NO CIRCULATION | 10:48 | 3.6 | 450 | 40 |
| START CMT 30 SACKS @15.8LB | 10:54 | 1.6 | 0 | 0 |
| END CMT 253.6' PLUG | 10:57 | 3.1 | 30 | 6.1 |
| START DISPLACEMENT W.H2O | 10:57 | 3.1 | 10 | 0 |
| END DISPLACEMENT | 10:59 | 3.3 | 0 | 8 |
| FULL DISP WAS 15.9BBLS | | | | |
| ENDED EARLY, LET SUCK | | | | |
| DISPLACEMENT SUCKED/ENDED AT | 11:01 | 0 | 0 | 14 |
| P.O.O.H WITH TUBING | 11:05 | | | |
| WIRELINE GO IN HOLE | 12:35 | | | |
| RIG CREW TAKE LUNCH BREAK | 12:42 | | | |
| BLM DECIDED TO WAIT TO TAG | 12:45 | | | |
| PREVIOUS PLUG AT 14:00 | | | | |
| WIRELINE GO IN HOLE TO TAG CMT | 13:28 | | | |
| SHOULD TAG PLUG @ 4,114.7' | 13:48 | | | |
| TAGGED @ 4,102' | | | | |
| WIRELINE GO IN HOLE WITH CIBP | 14:04 | | | |
| C.I.B.P SET AT 2,500' | 14:18 | | | |
| INSTRUCTED TO PSI TEST 5.5 CSG | 14:32 | 0.8 | 0 | 0 |
| WITH NO TUBING IN HOLE | | | | |
| NO PSI, NO CIRC UP 8 5/8 | 14:40 | 1.5 | 0 | 0 |
| END,NO PSI, NO CIRCULATION | 14:46 | 1.6 | 10 | 20 |
| FAILED CSG PSI TEST | 14:46 | | | |
| COMP MAN&BLM MAN BOTH MAKE | 14:50 | | | |
| CALLS TO THEIR SUPERVISORS | | | | |
| COMP MAN ASKS FOR 4.5 TOP PLUG | 15:00 | | | |
| TO PUMP DOWN TO C.I.B.P | | | | |
| GIVE RIG CREW 4.5 TOP PLUG | 15:35 | | | |
| TRY TO PUMP TOP PLUG DOWN | 15:35 | 1.7 | 450 | 0 |
| PSI LOCK UP | 15:37 | 0.3 | 1510 | 0.75 |
| INSTRUCTED TO LEAVE LOCATION | 15:50 | | | |

Operator: WYATT CHAPMAN

Accepted And Approved By:

PROPETRO

JOB LOG

TICKET NUMBER:WC-51

Cementing - Rocky Mountain Division

P.O. BOX 827 - VERNAL UT, 84078 - (435) 789-7407

COMPANY NAME:LARAMIE ENERGY

DATE: 7/6/20

COUNTY:MESA,CO

LEASE NAME:HORSESHOE CANYON 3-29

RIG NO: ENSIGN 319

| DECRPTION | TIME | RATE | PSI | VOLUME |
|---|-------|------|-------|-----------|
| BLEED PSI OFF OF PUMP AND CSG | 15:55 | | | |
| SHUT DOWN TRUCKS, LEAVE LOCATION | 16:15 | | | |
| ARRIVE ON LOCATION 7/7/20 | 7:26 | | | |
| RIG CREW RIGGING UP DRILL BIT | 7:26 | | | |
| RUBBER CMT TOP PLUG SHOULD BE ABOUT 31.5' DOWN CASING | | | | |
| RIG START IN HOLE WITH DRILL BIT | 8:11 | | | |
| LAY DOWN BIT AND POWER SWIVEL | 9:00 | | | |
| PLUG IS FALLING | 9:05 | | | |
| RIG R.I.H WITH TUB TO FOLLOW PLUG | 9:08 | | | |
| SAFETY MEETING | 9:30 | | | |
| HOOK CMT PUMP TO TUBING | 9:40 | | | |
| PUMP H20/GOOD CIRCULATION | 9:41 | 1.5 | 130 | 0 |
| " | 9:42 | 3 | 380 | 5 |
| END/CIRCULATION/SHUT RAMS | 9:44 | 3 | 380 | 10 |
| PSI TEST CASING | 9:46 | 0.7 | 280 | 0.2 |
| " | 9:51 | | 270 | |
| " | 9:54 | | 260 | |
| " | 9:58 | | 250 | |
| " | 10:01 | | 240 | |
| BLEE OFF/BUMP UP PSI AGAIN | 10:06 | 0.7 | 400 | 0.1 |
| " | 10:08 | | 390 | |
| " | 10:12 | | 380 | |
| " | 10:17 | | 370 | |
| " | 10:21 | | 370 | |
| BLEE OFF PSI | 10:22 | | 370-0 | |
| BLM MAN&COMP MAN MAKE CALLS | 10:22 | | | |
| PLUG #2 C.I.B.P/E.O.T @ 2,500' | | | | |
| START H20/GOOD CIRCULATION | 10:49 | 1.4 | 110 | 0 |
| END H20 | 10:51 | 3.1 | 380 | 5 |
| START CMT 12SKS,2%CALC2@15.8LB | 10:55 | 1.4 | 100 | 0 |
| END CMT 105' PLUG | 10:56 | 3.1 | 300 | 300 |
| START DISP WITH H20 | 10:56 | 3.1 | 270 | 0 |
| END DISPLACEMENT EARLY,LET SUCK | 10:58 | 3.6 | 400 | 8 |
| SUCKED TO FULL DISPLACEMENT | 10:59 | 0 | 0 | 9.2 TOTAL |
| WAIT TO TAG | | | | |
| WIRELING GO IN HOLE TO TAG CMT SHOULD TAG @ 2,395' | 12:28 | | | |
| WIRELINE HUNG UP/ STUCK @ 1,712' | 12:38 | | | |
| WIRELINE R.I.H WITH GAUGE RING | 12:50 | | | |
| HUNG UP AGAIN @ 1,712' | 13:00 | | | |
| COME UP 200' DROP RING FULL SPEED | 13:02 | | | |
| HUNG UP AGAIN @ 1,712' | 13:03 | | | |
| WIRELINE PULL OUT OF HOLE | 13:05 | | | |
| RIG PUT SHOE ON TUB & R.I.H TO PLUG | 13:27 | | | |

Operator: WYATT CHAPMAN

Accepted And Approved By:

PROPETRO

JOB LOG

TICKET NUMBER: WC-51

Cementing - Rocky Mountain Division

P.O. BOX 827 - VERNAL UT, 84078 - (435) 789-7407

COMPANY NAME: LARAMIE ENERGY

DATE: 7/6/20

LEASE NAME: HORSESHOE CANYON 3-29

COUNTY: MESA, COLORADO

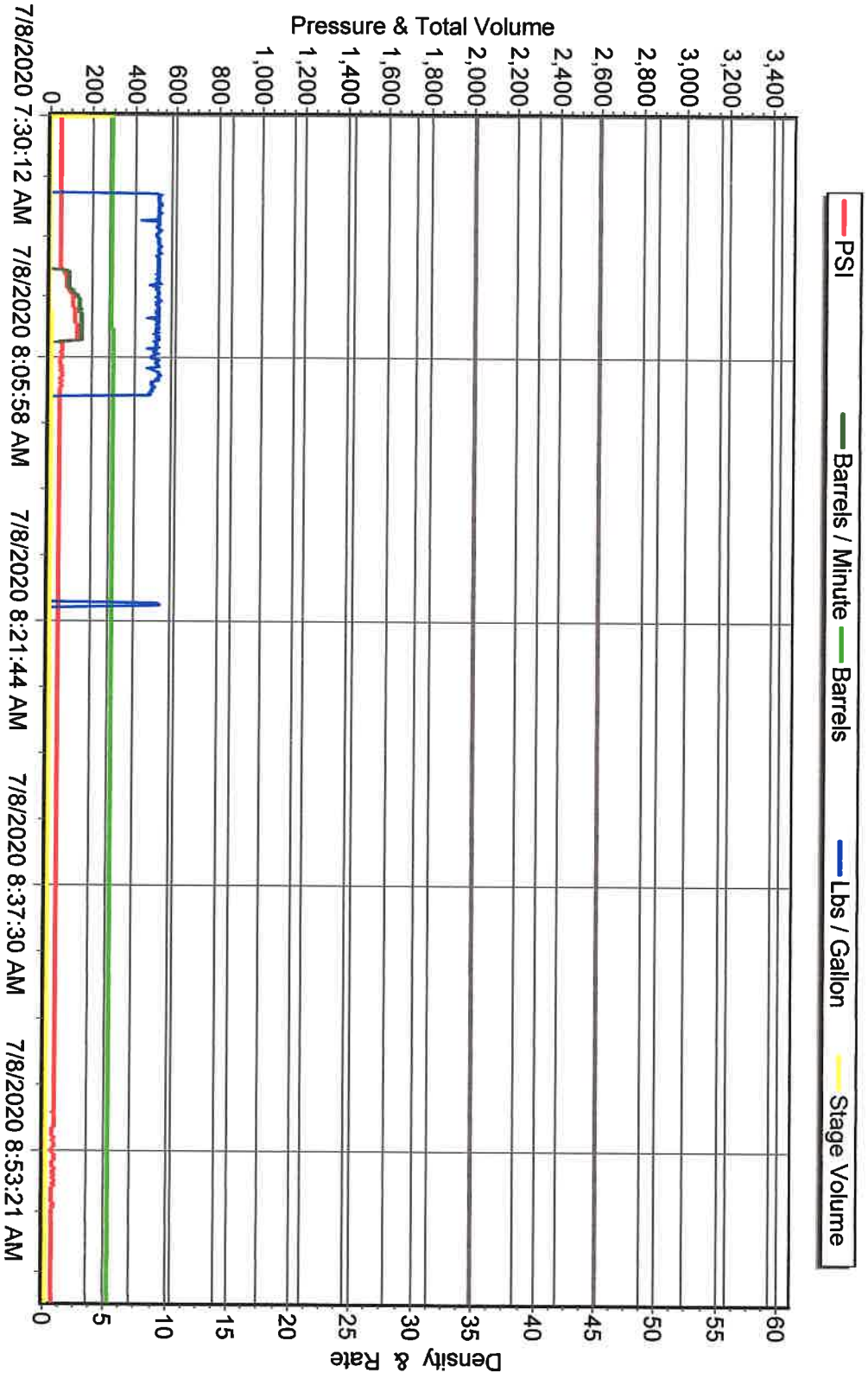
RIG NO: ENSIGN 319

| DESCRIPTION | TIME | RATE | PSI | VOLUME |
|--------------------------------------|-------|------|-----|--------|
| TAGGED CMT @ 2,381' | 14:06 | | | |
| P.O.O.H | 14:14 | | | |
| R.I.H WITH WIRELINE TO PERF | 14:51 | | | |
| WIRELINE PERFORATE @ 510' | 15:05 | | | |
| GET INJECTION RATE WITH PUMP | 15:14 | 1.3 | 0 | 0 |
| SPIT CIRCULATION/GASEY | 15:18 | 2.9 | 0 | 9 |
| NO CIRCULATION | 15:19 | 3 | 0 | 10 |
| NO CIRCULATION | 15:21 | 4 | 50 | 20 |
| GOOD CIRCULATION | 15:22 | 4 | 120 | 22 |
| END | 15:24 | 4 | 130 | 30 |
| RIG GO IN HOLE WITH TUB | 15:30 | | | |
| PLUG #3 PERFS@510'/EOT @ 553' | | | | |
| FILL HOLE WITH H2O | 15:44 | 1.6 | 0 | 0 |
| END | 15:45 | 3 | 100 | 2 |
| START CMT 40SKS/2%CALC2 | 15:45 | 3 | 100 | 0 |
| END CMT 340' PLUG/SHUT DOWN | 15:47 | 3.6 | 120 | 8.2 |
| WATCH DISP SUCK | 15:47 | 0 | 0 | 0 |
| END | 15:48 | 0 | 0 | 0.6 |
| P.O.O.H | 15:50 | | | |
| TOLD TO HOOK TO CSG&PUMP H2O | 16:02 | 1.6 | 0 | 0 |
| DOWN 4 1/2 | | | | |
| END/CIRCULATION UP 8 5/8 | 16:05 | 2.3 | 50 | 4 |
| TOLD TO PUMP MORE | 16:07 | 1.6 | 20 | 4 |
| END | 16:08 | 1.6 | 0 | 6 |
| WASH UP | 16:15 | | | |
| RELEASED FROM LOCATION | 16:20 | | | |
| TOLD TO ARRIVE NEXT MORN | | | | |
| FINISH PAPER WORK, LEAVE LOC | 16:49 | | | |
| ARRIVE ON LOC 7/8/20 | 6:33 | | | |
| WAIF FOR RIG CREW&COMP MAN | 6:33 | | | |
| SAFETY MEETING | 7:15 | | | |
| WIRELINE RIH TO TAG PLUG&PERF | 7:25 | | | |
| SHOULD TAG +OR- 369' | | | | |
| TAGGED CMT @ 426' | 7:30 | | | |
| BLM HAND MAKE PHONE CALL | 7:35 | | | |
| GET INJECTION RATE WITH PUMP | 7:59 | 1.6 | 50 | 0 |
| CAUGHT CIRCULATION | 8:00 | 1.6 | 80 | 1 |
| END | 8:03 | 2.7 | 130 | 10 |
| CREW RIG DOWN, PUT HANGER ON | 8:10 | | | |
| HOOK PUMP TO CASING HANGER | | | | |
| #4 PERFS @100' | | | | |
| PUMP GREEN DYED H2O | 9:50 | 1.6 | 40 | 0 |
| END/ GOOD CIRCULATION | 9:51 | 2.9 | 100 | 2.5 |
| START CMT | 9:56 | 1.6 | 50 | 0 |
| GOOD CMT TO SURFACE | 9:58 | 2.4 | 130 | 5.1 |
| END CMT 30SACKS/2%CALC2 | 9:59 | 2.4 | 130 | 6.1 |
| WASHUP | 10:00 | | | |
| START DIG UP/CUT OFF | 11:17 | | | |

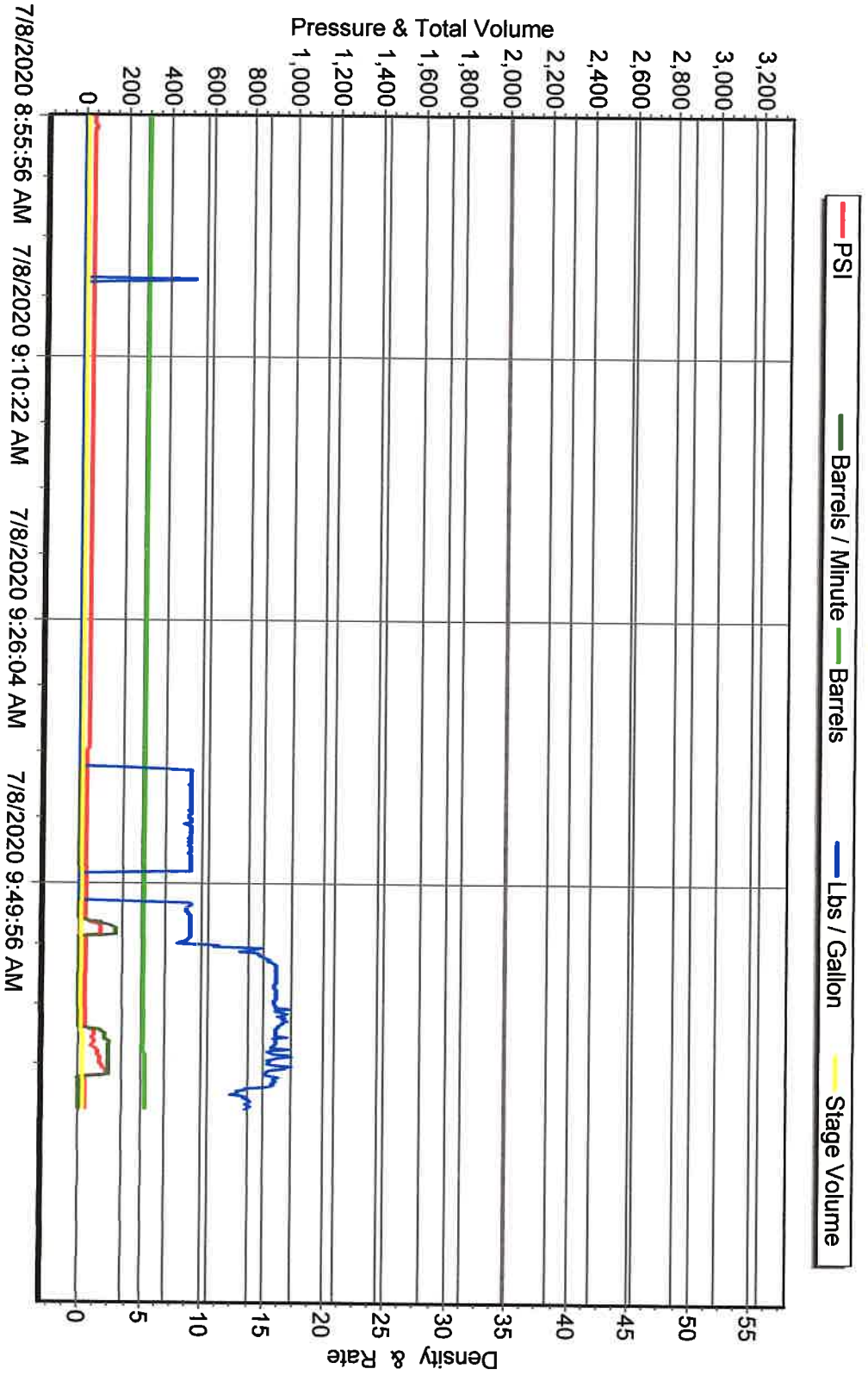
Operator: WYATT CHAPMAN

Accepted And Approved By:

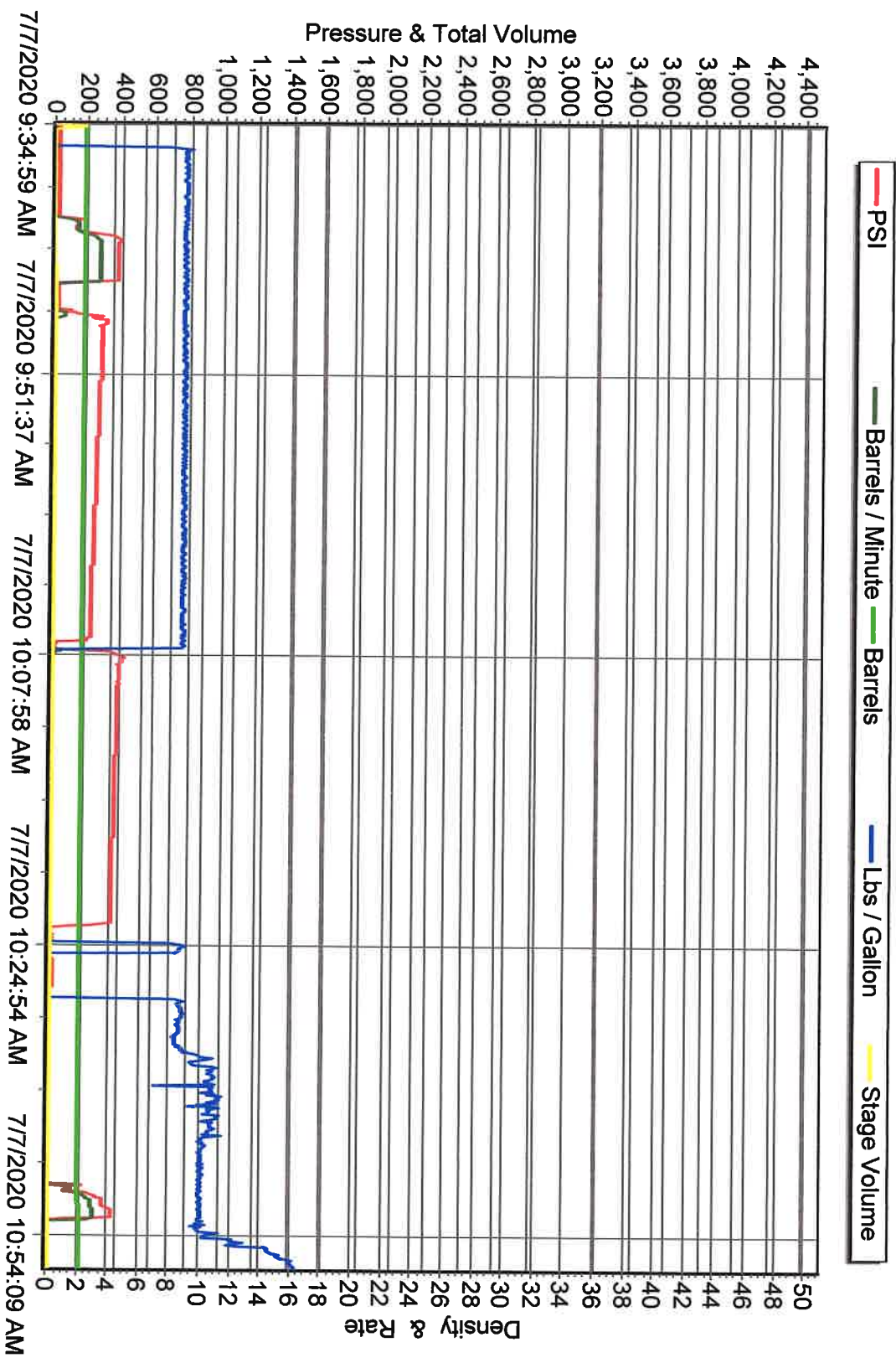
HORSESHOE CANYON 3-29 7/8/20 PAGE 1



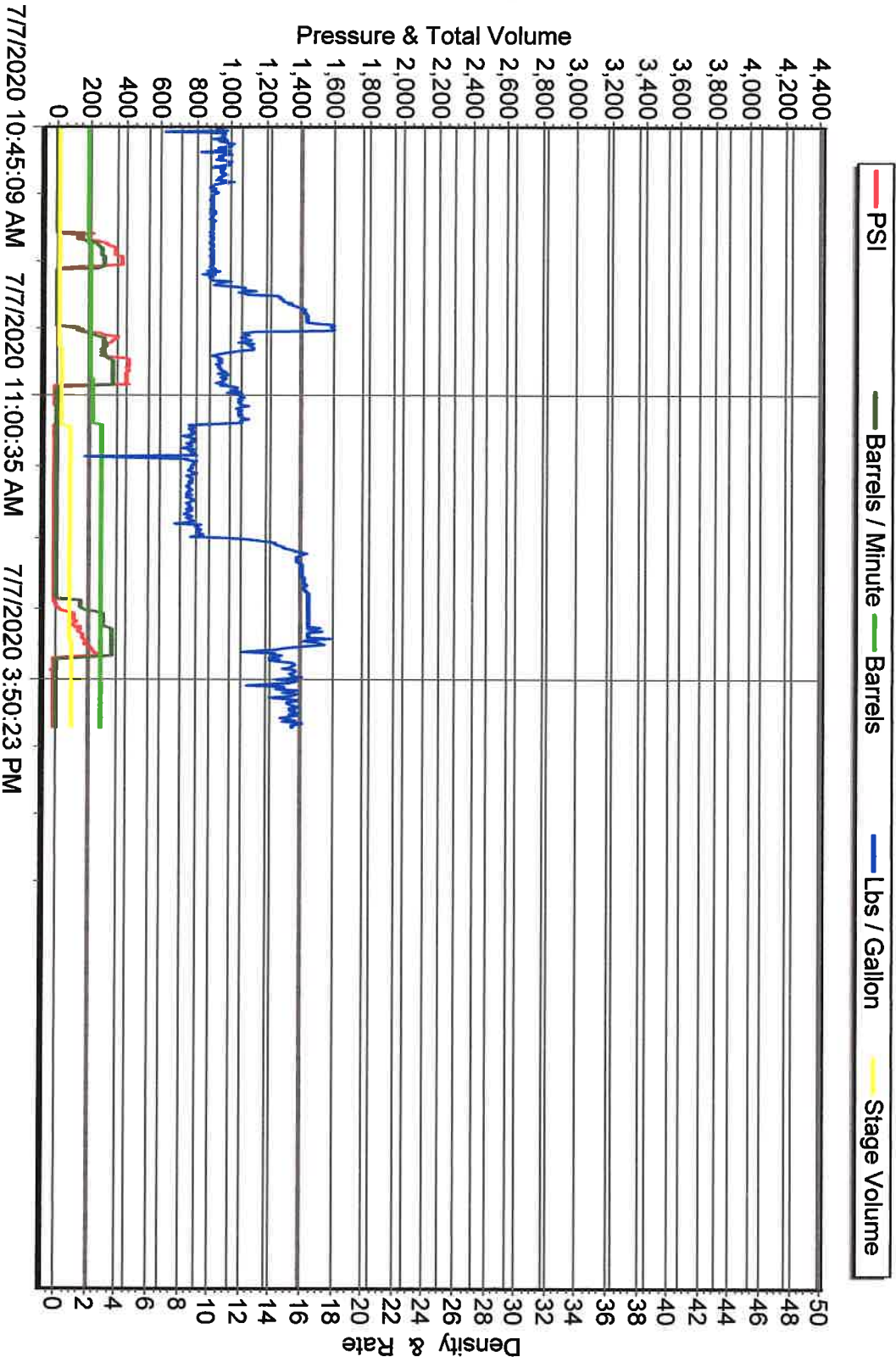
HORSESHOE CANYON 3-29 7/8/20 PAGE 2



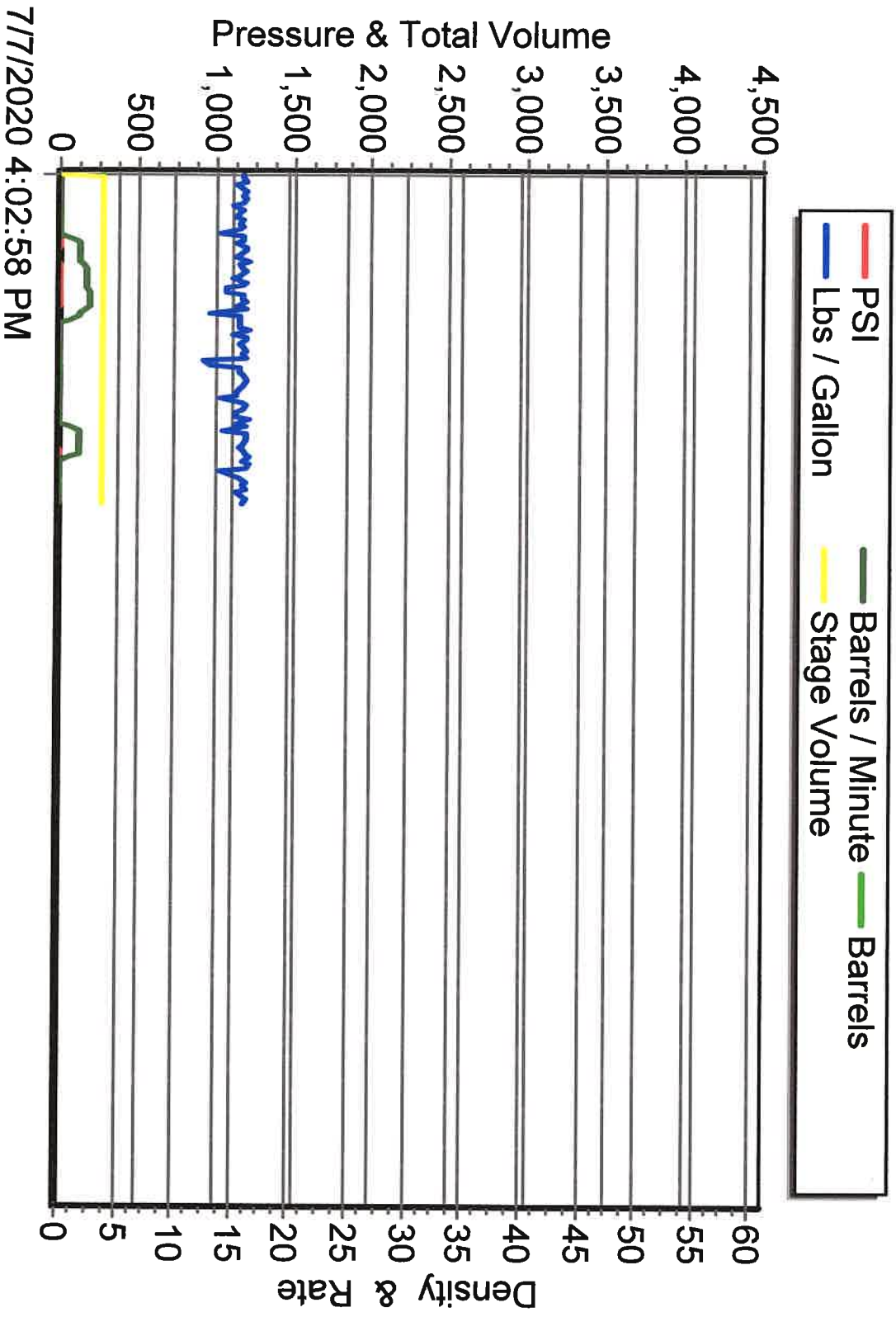
HORSESHOE CANYON 3-29 7/7/20 PAGE 1



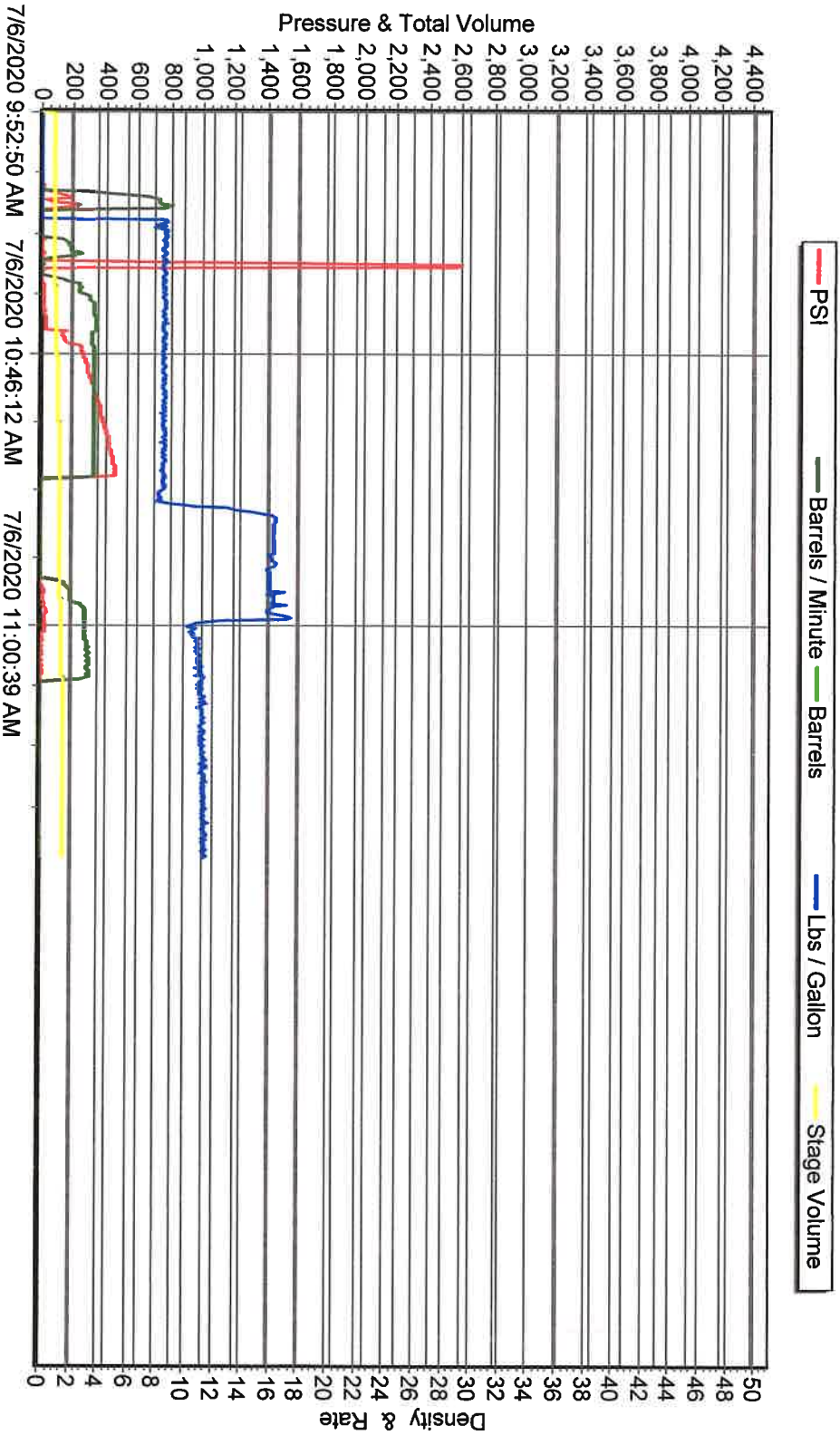
HORSESHOE CANYON 3-29 7/7/20 PAGE 2



HORSESHOE CANYON 3-29 7/7/20 PAGE 3



HORSESHOE CANYON 3-29 7/6/20 PAGE 1



HORSESHOE CANYON 3-29 7/6/20 PAGE 2

