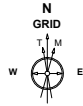


Cub Creek Energy, LLC

Location **Weld County, CO** Slot **KNIGHT 16**
 Field **WATTENBERG** Well **W KNIGHT 16**
 Installation **Knight Pad** Wellbore **W KNIGHT 16 (PWB)**



Nov-6-2017
 EMM-2015 Dip: 66.59 deg Field: 52154.0 nT
 Lat: N40 11 52.9440 Long: W105 2 31.0920 Elev: 4993.00 ft
 Magnetic North is 8.54 deg East of True North
 GRID North is 0.30 deg East of True North
 To correct azimuth from True to GRID subtract 0.30 deg
 To correct azimuth from Magnetic to GRID add 8.25 deg

Created by sean.dolfinger
 Date plotted 14-Jul-2020
 Plot reference is W KNIGHT 16 (PWB).
 Ref wellpath is W KNIGHT 16 (PWP#1).
 Coordinates are in Feet reference KNIGHT 16.
 True Vertical Depths are reference Rig Datum.
 Measured Depths are reference Rig Datum.
 Rig Datum: Planned Datum #1
 Rig Datum to Mean Sea Level: 5010.00 ft.
 Plot North is aligned to GRID North.

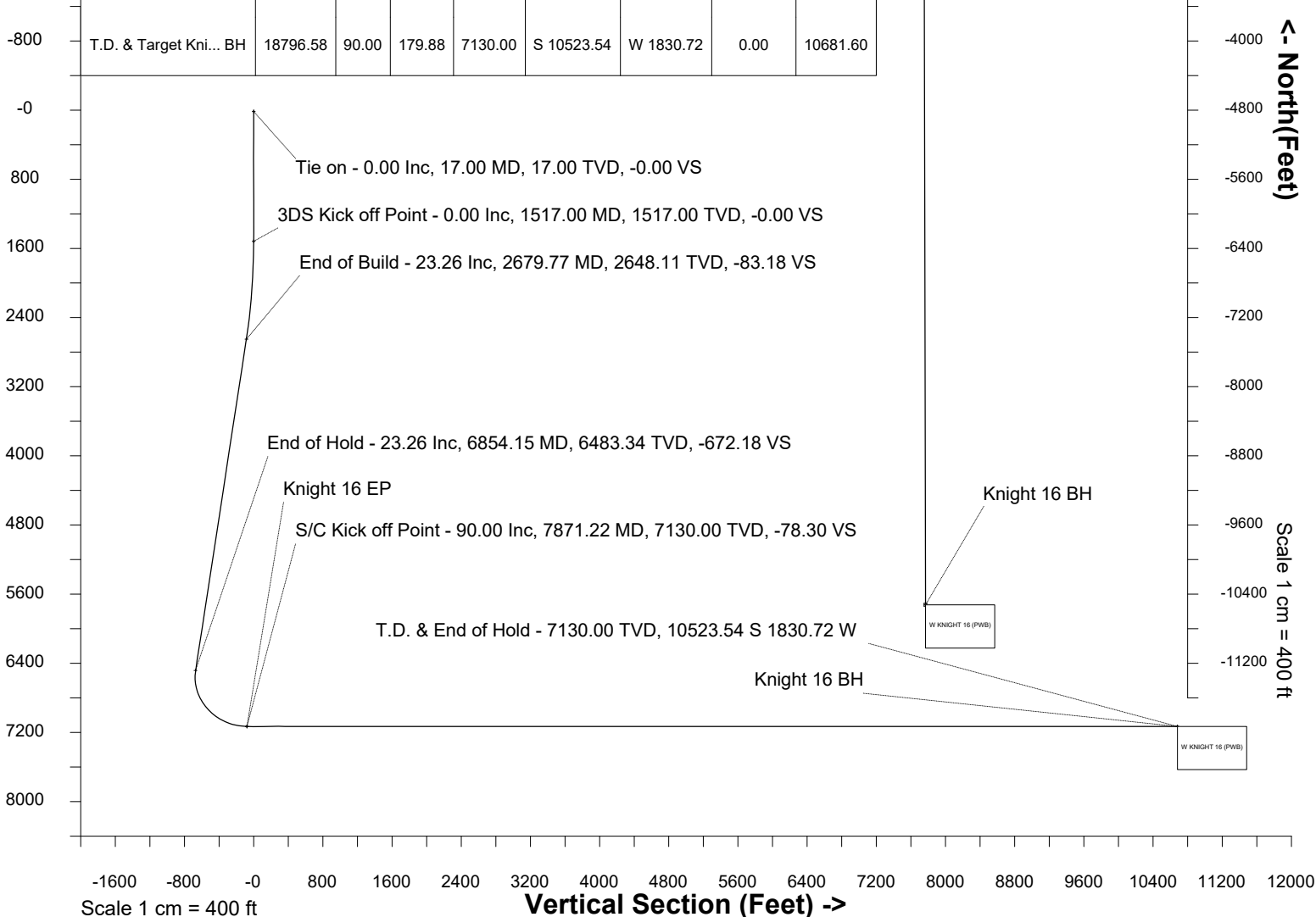
Scale 1 cm = 400 ft **East (Feet) ->**
 -3200 -2400 -1600 -800 -0 800

WELL PROFILE DATA

Point	MD	Inc	Azi	TVD	North	East	deg/100ft	V. Sect
Tie on	17.00	0.00	0.00	17.00	S 0.00	W 0.00		-0.00
KOP	1517.00	0.00	300.81	1517.00	S 0.00	W 0.00	0.00	-0.00
End of Build	2679.77	23.26	300.81	2648.11	N 119.21	W 199.91	2.00	-83.18
End of Hold	6854.15	23.26	300.81	6483.34	N 963.32	W 1615.52	0.00	-672.18
Target Knight 16 EP	7871.22	90.00	179.88	7130.00	N 401.80	W 1852.79	10.00	-78.30
T.D. & Target Kni... BH	18796.58	90.00	179.88	7130.00	S 10523.54	W 1830.72	0.00	10681.60

Scale 1 cm = 400 ft

<- True Vertical Depth (Feet)



SYSDRILL
Well Design Combined Report
Wellbore: W KNIGHT 16 (PWB)



Wellhead Details							
Name	Latitude	Longitude	Northing	Easting	North	East	Slot Elevation Above Ground
KNIGHT 16	40.19767100	-105.04205500	1315184.3609	3127922.4996	134.55S	23.05W	0.00

Declination		
Date	Source	Time
Nov-6-2017	EMM-2015	14:52

Installation Details						
Name	Installation Position (Latitude)	Installation Position (Longitude)	Northing	Easting	Coord System Name	North Alignment
Knight Pad	40.19804000	-105.04197000	1315318.9022	3127945.5490	NAD83 Based Colorado State Planes, Northern Zone, US Feet	Grid

Summary Wellpath								
MD[ft]	Inc[deg]	Azi[deg]	TVD[ft]	Vertical Depth SS	North[ft]	East[ft]	Dogleg [deg/100ft]	Vertical Section[ft]
17.00	0.00	0.00	17.00	-4993.00	0.00N	0.00E		0.00
1517.00	0.00	300.81	1517.00	-3493.00	0.00N	0.00E	==>	0.00
2679.77	23.26	300.81	2648.11	-2361.89	119.21N	199.91W	2.00	-83.18
6854.15	23.26	300.81	6483.34	1473.34	963.32N	1615.52W	==>	-672.18
7871.22	90.00	179.88	7130.00	2120.00	401.80N	1852.79W	10.00	-78.30
18796.58	90.00	179.88	7130.00	2120.00	10523.54S	1830.72W	==>	10681.60

Interpolated Wellpath									
MD[ft]	Inc[deg]	Azi[deg]	TVD[ft]	North[ft]	East[ft]	Dogleg [deg/100ft]	Vertical Section[ft]	Station Position (Latitude)	Station Position (Longitude)
0.00	0.00	0.00	0.00	0.00N	0.00E		0.00	40.19767100	-105.04205500
17.00	0.00	0.00	17.00	0.00N	0.00E	==>	0.00	40.19767100	-105.04205500
100.00	0.00	0.00	100.00	0.00N	0.00E	==>	0.00	40.19767100	-105.04205500
200.00	0.00	0.00	200.00	0.00N	0.00E	==>	0.00	40.19767100	-105.04205500
300.00	0.00	0.00	300.00	0.00N	0.00E	==>	0.00	40.19767100	-105.04205500
400.00	0.00	0.00	400.00	0.00N	0.00E	==>	0.00	40.19767100	-105.04205500
500.00	0.00	0.00	500.00	0.00N	0.00E	==>	0.00	40.19767100	-105.04205500
600.00	0.00	0.00	600.00	0.00N	0.00E	==>	0.00	40.19767100	-105.04205500
700.00	0.00	0.00	700.00	0.00N	0.00E	==>	0.00	40.19767100	-105.04205500
800.00	0.00	0.00	800.00	0.00N	0.00E	==>	0.00	40.19767100	-105.04205500
900.00	0.00	0.00	900.00	0.00N	0.00E	==>	0.00	40.19767100	-105.04205500
1000.00	0.00	0.00	1000.00	0.00N	0.00E	==>	0.00	40.19767100	-105.04205500
1100.00	0.00	0.00	1100.00	0.00N	0.00E	==>	0.00	40.19767100	-105.04205500
1200.00	0.00	0.00	1200.00	0.00N	0.00E	==>	0.00	40.19767100	-105.04205500
1300.00	0.00	0.00	1300.00	0.00N	0.00E	==>	0.00	40.19767100	-105.04205500
1400.00	0.00	0.00	1400.00	0.00N	0.00E	==>	0.00	40.19767100	-105.04205500
1500.00	0.00	0.00	1500.00	0.00N	0.00E	==>	0.00	40.19767100	-105.04205500
1517.00	0.00	300.81	1517.00	0.00N	0.00E	==>	0.00	40.19767100	-105.04205500
1617.00	2.00	300.81	1616.98	0.89N	1.50W	2.00	-0.62	40.19767347	-105.04206035
1717.00	4.00	300.81	1716.84	3.57N	5.99W	2.00	-2.49	40.19768090	-105.04207639
1817.00	6.00	300.81	1816.45	8.04N	13.48W	2.00	-5.61	40.19769325	-105.04210310
1917.00	8.00	300.81	1915.70	14.28N	23.95W	2.00	-9.96	40.19771053	-105.04214045
2017.00	10.00	300.81	2014.47	22.29N	37.38W	2.00	-15.55	40.19773272	-105.04218840
2117.00	12.00	300.81	2112.62	32.06N	53.77W	2.00	-22.37	40.19775977	-105.04224688
2217.00	14.00	300.81	2210.06	43.58N	73.09W	2.00	-30.41	40.19779167	-105.04231583
2317.00	16.00	300.81	2306.64	56.84N	95.32W	2.00	-39.66	40.19782837	-105.04239515
2417.00	18.00	300.81	2402.27	71.81N	120.43W	2.00	-50.11	40.19786982	-105.04248476
2517.00	20.00	300.81	2496.82	88.48N	148.39W	2.00	-61.74	40.19791599	-105.04258455
2617.00	22.00	300.81	2590.17	106.84N	179.17W	2.00	-74.55	40.19796680	-105.04269438
2679.77	23.26	300.81	2648.11	119.21N	199.91W	2.00	-83.18	40.19800105	-105.04276841
2717.00	23.26	300.81	2682.31	126.73N	212.54W	==>	-88.43	40.19802189	-105.04281346
2817.00	23.26	300.81	2774.19	146.95N	246.45W	==>	-102.54	40.19807787	-105.04293448

All data is in Feet unless otherwise stated
Coordinates are from Slot MD's are from Rig and TVD's are from Rig (Planned Datum #1 5010.0ft above Mean Sea Level)
Vertical Section is from 0.00N 0.00E on azimuth 189.87 degrees
Bottom hole distance is 10681.60 Feet on azimuth 189.87 degrees from Wellhead
Calculation method uses Minimum Curvature method
Prepared by
Date Printed: 14-Jul-2020

SYSDRILL
Well Design Combined Report
Wellbore: W KNIGHT 16 (PWB)



Interpolated Wellpath									
MD[ft]	Inc[deg]	Azi[deg]	TVD[ft]	North[ft]	East[ft]	Dogleg [deg/100ft]	Vertical Section[ft]	Station Position (Latitude)	Station Position (Longitude)
2917.00	23.26	300.81	2866.06	167.18N	280.36W	==>	-116.65	40.19813386	-105.04305550
3017.00	23.26	300.81	2957.94	187.40N	314.27W	==>	-130.76	40.19818985	-105.04317652
3117.00	23.26	300.81	3049.81	207.62N	348.18W	==>	-144.87	40.19824583	-105.04329754
3217.00	23.26	300.81	3141.69	227.84N	382.10W	==>	-158.98	40.19830182	-105.04341856
3317.00	23.26	300.81	3233.56	248.06N	416.01W	==>	-173.09	40.19835780	-105.04353958
3417.00	23.26	300.81	3325.44	268.28N	449.92W	==>	-187.20	40.19841379	-105.04366060
3517.00	23.26	300.81	3417.31	288.50N	483.83W	==>	-201.31	40.19846978	-105.04378163
3617.00	23.26	300.81	3509.19	308.72N	517.74W	==>	-215.42	40.19852576	-105.04390265
3717.00	23.26	300.81	3601.06	328.95N	551.65W	==>	-229.53	40.19858175	-105.04402367
3817.00	23.26	300.81	3692.94	349.17N	585.57W	==>	-243.64	40.19863773	-105.04414469
3917.00	23.26	300.81	3784.82	369.39N	619.48W	==>	-257.75	40.19869372	-105.04426571
4017.00	23.26	300.81	3876.69	389.61N	653.39W	==>	-271.86	40.19874970	-105.04438674
4117.00	23.26	300.81	3968.57	409.83N	687.30W	==>	-285.97	40.19880569	-105.04450776
4217.00	23.26	300.81	4060.44	430.05N	721.21W	==>	-300.08	40.19886167	-105.04462878
4317.00	23.26	300.81	4152.32	450.27N	755.13W	==>	-314.19	40.19891766	-105.04474980
4417.00	23.26	300.81	4244.19	470.50N	789.04W	==>	-328.30	40.19897364	-105.04487083
4517.00	23.26	300.81	4336.07	490.72N	822.95W	==>	-342.41	40.19902963	-105.04499185
4617.00	23.26	300.81	4427.94	510.94N	856.86W	==>	-356.52	40.19908561	-105.04511287
4717.00	23.26	300.81	4519.82	531.16N	890.77W	==>	-370.63	40.19914160	-105.04523390
4817.00	23.26	300.81	4611.69	551.38N	924.69W	==>	-384.74	40.19919758	-105.04535492
4917.00	23.26	300.81	4703.57	571.60N	958.60W	==>	-398.85	40.19925356	-105.04547594
5017.00	23.26	300.81	4795.44	591.82N	992.51W	==>	-412.96	40.19930955	-105.04559697
5117.00	23.26	300.81	4887.32	612.05N	1026.42W	==>	-427.07	40.19936553	-105.04571799
5217.00	23.26	300.81	4979.20	632.27N	1060.33W	==>	-441.18	40.19942151	-105.04583902
5317.00	23.26	300.81	5071.07	652.49N	1094.24W	==>	-455.29	40.19947750	-105.04596004
5417.00	23.26	300.81	5162.95	672.71N	1128.16W	==>	-469.40	40.19953348	-105.04608107
5517.00	23.26	300.81	5254.82	692.93N	1162.07W	==>	-483.51	40.19958946	-105.04620209
5617.00	23.26	300.81	5346.70	713.15N	1195.98W	==>	-497.62	40.19964545	-105.04632312
5717.00	23.26	300.81	5438.57	733.37N	1229.89W	==>	-511.73	40.19970143	-105.04644414
5817.00	23.26	300.81	5530.45	753.59N	1263.80W	==>	-525.84	40.19975741	-105.04656517
5917.00	23.26	300.81	5622.32	773.82N	1297.72W	==>	-539.95	40.19981340	-105.04668620
6017.00	23.26	300.81	5714.20	794.04N	1331.63W	==>	-554.06	40.19986938	-105.04680722
6117.00	23.26	300.81	5806.07	814.26N	1365.54W	==>	-568.17	40.19992536	-105.04692825
6217.00	23.26	300.81	5897.95	834.48N	1399.45W	==>	-582.28	40.19998134	-105.04704928
6317.00	23.26	300.81	5989.82	854.70N	1433.36W	==>	-596.39	40.20003733	-105.04717030
6417.00	23.26	300.81	6081.70	874.92N	1467.28W	==>	-610.50	40.20009331	-105.04729133
6517.00	23.26	300.81	6173.57	895.14N	1501.19W	==>	-624.61	40.20014929	-105.04741236
6617.00	23.26	300.81	6265.45	915.37N	1535.10W	==>	-638.72	40.20020527	-105.04753338
6717.00	23.26	300.81	6357.33	935.59N	1569.01W	==>	-652.83	40.20026125	-105.04765441
6817.00	23.26	300.81	6449.20	955.81N	1602.92W	==>	-666.94	40.20031723	-105.04777544
6854.15	23.26	300.81	6483.34	963.32N	1615.52W	==>	-672.18	40.20033803	-105.04782041
6917.00	20.92	285.23	6541.62	972.63N	1637.03W	10.00	-677.67	40.20036389	-105.04789722
7017.00	20.73	256.85	6635.32	973.30N	1671.57W	10.00	-672.40	40.20036620	-105.04802088
7117.00	24.76	232.95	6727.72	956.61N	1705.61W	10.00	-650.13	40.20032087	-105.04814301
7217.00	31.43	216.98	6816.01	923.08N	1738.09W	10.00	-611.53	40.20022928	-105.04825989
7317.00	39.42	206.53	6897.51	873.72N	1768.03W	10.00	-557.77	40.20009421	-105.04836799
7417.00	48.06	199.23	6969.74	810.03N	1794.53W	10.00	-490.48	40.19991977	-105.04846401
7517.00	57.06	193.71	7030.50	733.95N	1816.78W	10.00	-411.72	40.19971125	-105.04854503
7617.00	66.25	189.22	7077.95	647.80N	1834.10W	10.00	-323.87	40.19947499	-105.04860860
7717.00	75.55	185.33	7110.64	554.18N	1845.96W	10.00	-229.60	40.19921817	-105.04865278
7817.00	84.91	181.76	7127.59	455.94N	1852.01W	10.00	-131.78	40.19894860	-105.04867623
7871.22	90.00	179.88	7130.00	401.80N	1852.79W	10.00	-78.30	40.19880000	-105.04868000
7917.00	90.00	179.88	7130.00	356.02N	1852.70W	==>	-33.22	40.19867433	-105.04868050
8017.00	90.00	179.88	7130.00	256.02N	1852.50W	==>	65.27	40.19839983	-105.04868160
8117.00	90.00	179.88	7130.00	156.02N	1852.29W	==>	163.75	40.19812533	-105.04868270
8217.00	90.00	179.88	7130.00	56.02N	1852.09W	==>	262.24	40.19785083	-105.04868380
8317.00	90.00	179.88	7130.00	43.98S	1851.89W	==>	360.73	40.19757634	-105.04868490
8417.00	90.00	179.88	7130.00	143.98S	1851.69W	==>	459.21	40.19730184	-105.04868600

All data is in Feet unless otherwise stated
Coordinates are from Slot MD's are from Rig and TVD's are from Rig (Planned Datum #1 5010.0ft above Mean Sea Level)
Vertical Section is from 0.00N 0.00E on azimuth 189.87 degrees
Bottom hole distance is 10681.60 Feet on azimuth 189.87 degrees from Wellhead
Calculation method uses Minimum Curvature method
Prepared by
Date Printed: 14-Jul-2020

SYSDRILL
Well Design Combined Report
Wellbore: W KNIGHT 16 (PWB)



Interpolated Wellpath									
MD[ft]	Inc[deg]	Azi[deg]	TVD[ft]	North[ft]	East[ft]	Dogleg [deg/100ft]	Vertical Section[ft]	Station Position (Latitude)	Station Position (Longitude)
8517.00	90.00	179.88	7130.00	243.98S	1851.49W	==>	557.70	40.19702734	-105.04868710
8617.00	90.00	179.88	7130.00	343.98S	1851.28W	==>	656.18	40.19675284	-105.04868819
8717.00	90.00	179.88	7130.00	443.98S	1851.08W	==>	754.67	40.19647834	-105.04868929
8817.00	90.00	179.88	7130.00	543.98S	1850.88W	==>	853.15	40.19620384	-105.04869039
8917.00	90.00	179.88	7130.00	643.98S	1850.68W	==>	951.64	40.19592935	-105.04869149
9017.00	90.00	179.88	7130.00	743.98S	1850.48W	==>	1050.12	40.19565485	-105.04869259
9117.00	90.00	179.88	7130.00	843.98S	1850.27W	==>	1148.61	40.19538035	-105.04869369
9217.00	90.00	179.88	7130.00	943.98S	1850.07W	==>	1247.10	40.19510585	-105.04869479
9317.00	90.00	179.88	7130.00	1043.98S	1849.87W	==>	1345.58	40.19483135	-105.04869589
9417.00	90.00	179.88	7130.00	1143.98S	1849.67W	==>	1444.07	40.19455685	-105.04869698
9517.00	90.00	179.88	7130.00	1243.98S	1849.47W	==>	1542.55	40.19428236	-105.04869808
9617.00	90.00	179.88	7130.00	1343.98S	1849.26W	==>	1641.04	40.19400786	-105.04869918
9717.00	90.00	179.88	7130.00	1443.98S	1849.06W	==>	1739.52	40.19373336	-105.04870028
9817.00	90.00	179.88	7130.00	1543.98S	1848.86W	==>	1838.01	40.19345886	-105.04870138
9917.00	90.00	179.88	7130.00	1643.98S	1848.66W	==>	1936.49	40.19318436	-105.04870248
10017.00	90.00	179.88	7130.00	1743.98S	1848.46W	==>	2034.98	40.19290986	-105.04870358
10117.00	90.00	179.88	7130.00	1843.98S	1848.25W	==>	2133.46	40.19263537	-105.04870468
10217.00	90.00	179.88	7130.00	1943.98S	1848.05W	==>	2231.95	40.19236087	-105.04870577
10317.00	90.00	179.88	7130.00	2043.98S	1847.85W	==>	2330.44	40.19208637	-105.04870687
10417.00	90.00	179.88	7130.00	2143.98S	1847.65W	==>	2428.92	40.19181187	-105.04870797
10517.00	90.00	179.88	7130.00	2243.98S	1847.45W	==>	2527.41	40.19153737	-105.04870907
10617.00	90.00	179.88	7130.00	2343.98S	1847.24W	==>	2625.89	40.19126287	-105.04871017
10717.00	90.00	179.88	7130.00	2443.98S	1847.04W	==>	2724.38	40.19098837	-105.04871127
10817.00	90.00	179.88	7130.00	2543.98S	1846.84W	==>	2822.86	40.19071388	-105.04871237
10917.00	90.00	179.88	7130.00	2643.98S	1846.64W	==>	2921.35	40.19043938	-105.04871346
11017.00	90.00	179.88	7130.00	2743.98S	1846.44W	==>	3019.83	40.19016488	-105.04871456
11117.00	90.00	179.88	7130.00	2843.98S	1846.23W	==>	3118.32	40.18989038	-105.04871566
11217.00	90.00	179.88	7130.00	2943.98S	1846.03W	==>	3216.81	40.18961588	-105.04871676
11317.00	90.00	179.88	7130.00	3043.97S	1845.83W	==>	3315.29	40.18934138	-105.04871786
11417.00	90.00	179.88	7130.00	3143.97S	1845.63W	==>	3413.78	40.18906688	-105.04871896
11517.00	90.00	179.88	7130.00	3243.97S	1845.43W	==>	3512.26	40.18879239	-105.04872006
11617.00	90.00	179.88	7130.00	3343.97S	1845.22W	==>	3610.75	40.18851789	-105.04872115
11717.00	90.00	179.88	7130.00	3443.97S	1845.02W	==>	3709.23	40.18824339	-105.04872225
11817.00	90.00	179.88	7130.00	3543.97S	1844.82W	==>	3807.72	40.18796889	-105.04872335
11917.00	90.00	179.88	7130.00	3643.97S	1844.62W	==>	3906.20	40.18769439	-105.04872445
12017.00	90.00	179.88	7130.00	3743.97S	1844.42W	==>	4004.69	40.18741989	-105.04872555
12117.00	90.00	179.88	7130.00	3843.97S	1844.21W	==>	4103.17	40.18714539	-105.04872665
12217.00	90.00	179.88	7130.00	3943.97S	1844.01W	==>	4201.66	40.18687090	-105.04872775
12317.00	90.00	179.88	7130.00	4043.97S	1843.81W	==>	4300.15	40.18659640	-105.04872884
12417.00	90.00	179.88	7130.00	4143.97S	1843.61W	==>	4398.63	40.18632190	-105.04872994
12517.00	90.00	179.88	7130.00	4243.97S	1843.41W	==>	4497.12	40.18604740	-105.04873104
12617.00	90.00	179.88	7130.00	4343.97S	1843.20W	==>	4595.60	40.18577290	-105.04873214
12717.00	90.00	179.88	7130.00	4443.97S	1843.00W	==>	4694.09	40.18549840	-105.04873324
12817.00	90.00	179.88	7130.00	4543.97S	1842.80W	==>	4792.57	40.18522390	-105.04873434
12917.00	90.00	179.88	7130.00	4643.97S	1842.60W	==>	4891.06	40.18494940	-105.04873543
13017.00	90.00	179.88	7130.00	4743.97S	1842.40W	==>	4989.54	40.18467491	-105.04873653
13117.00	90.00	179.88	7130.00	4843.97S	1842.19W	==>	5088.03	40.18440041	-105.04873763
13217.00	90.00	179.88	7130.00	4943.97S	1841.99W	==>	5186.52	40.18412591	-105.04873873
13317.00	90.00	179.88	7130.00	5043.97S	1841.79W	==>	5285.00	40.18385141	-105.04873983
13417.00	90.00	179.88	7130.00	5143.97S	1841.59W	==>	5383.49	40.18357691	-105.04874093
13517.00	90.00	179.88	7130.00	5243.97S	1841.39W	==>	5481.97	40.18330241	-105.04874202
13617.00	90.00	179.88	7130.00	5343.97S	1841.18W	==>	5580.46	40.18302791	-105.04874312
13717.00	90.00	179.88	7130.00	5443.97S	1840.98W	==>	5678.94	40.18275341	-105.04874422
13817.00	90.00	179.88	7130.00	5543.97S	1840.78W	==>	5777.43	40.18247891	-105.04874532
13917.00	90.00	179.88	7130.00	5643.97S	1840.58W	==>	5875.91	40.18220442	-105.04874642
14017.00	90.00	179.88	7130.00	5743.97S	1840.38W	==>	5974.40	40.18192992	-105.04874752
14117.00	90.00	179.88	7130.00	5843.97S	1840.17W	==>	6072.88	40.18165542	-105.04874861
14217.00	90.00	179.88	7130.00	5943.97S	1839.97W	==>	6171.37	40.18138092	-105.04874971
14317.00	90.00	179.88	7130.00	6043.97S	1839.77W	==>	6269.86	40.18110642	-105.04875081

All data is in Feet unless otherwise stated
Coordinates are from Slot MD's are from Rig and TVD's are from Rig (Planned Datum #1 5010.0ft above Mean Sea Level)
Vertical Section is from 0.00N 0.00E on azimuth 189.87 degrees
Bottom hole distance is 10681.60 Feet on azimuth 189.87 degrees from Wellhead
Calculation method uses Minimum Curvature method
Prepared by
Date Printed: 14-Jul-2020

SYSDRILL
Well Design Combined Report
Wellbore: W KNIGHT 16 (PWB)



Interpolated Wellpath									
MD[ft]	Inc[deg]	Azi[deg]	TVD[ft]	North[ft]	East[ft]	Dogleg [deg/100ft]	Vertical Section[ft]	Station Position (Latitude)	Station Position (Longitude)
14417.00	90.00	179.88	7130.00	6143.97S	1839.57W	==>	6368.34	40.18083192	-105.04875191
14517.00	90.00	179.88	7130.00	6243.97S	1839.37W	==>	6466.83	40.18055742	-105.04875301
14617.00	90.00	179.88	7130.00	6343.97S	1839.16W	==>	6565.31	40.18028292	-105.04875411
14717.00	90.00	179.88	7130.00	6443.97S	1838.96W	==>	6663.80	40.18000842	-105.04875520
14817.00	90.00	179.88	7130.00	6543.97S	1838.76W	==>	6762.28	40.17973392	-105.04875630
14917.00	90.00	179.88	7130.00	6643.97S	1838.56W	==>	6860.77	40.17945943	-105.04875740
15017.00	90.00	179.88	7130.00	6743.97S	1838.36W	==>	6959.25	40.17918493	-105.04875850
15117.00	90.00	179.88	7130.00	6843.97S	1838.15W	==>	7057.74	40.17891043	-105.04875960
15217.00	90.00	179.88	7130.00	6943.97S	1837.95W	==>	7156.23	40.17863593	-105.04876069
15317.00	90.00	179.88	7130.00	7043.97S	1837.75W	==>	7254.71	40.17836143	-105.04876179
15417.00	90.00	179.88	7130.00	7143.97S	1837.55W	==>	7353.20	40.17808693	-105.04876289
15517.00	90.00	179.88	7130.00	7243.97S	1837.35W	==>	7451.68	40.17781243	-105.04876399
15617.00	90.00	179.88	7130.00	7343.97S	1837.14W	==>	7550.17	40.17753793	-105.04876509
15717.00	90.00	179.88	7130.00	7443.97S	1836.94W	==>	7648.65	40.17726343	-105.04876619
15817.00	90.00	179.88	7130.00	7543.97S	1836.74W	==>	7747.14	40.17698893	-105.04876728
15917.00	90.00	179.88	7130.00	7643.97S	1836.54W	==>	7845.62	40.17671443	-105.04876838
16017.00	90.00	179.88	7130.00	7743.97S	1836.34W	==>	7944.11	40.17643994	-105.04876948
16117.00	90.00	179.88	7130.00	7843.97S	1836.13W	==>	8042.59	40.17616544	-105.04877058
16217.00	90.00	179.88	7130.00	7943.96S	1835.93W	==>	8141.08	40.17589094	-105.04877168
16317.00	90.00	179.88	7130.00	8043.96S	1835.73W	==>	8239.57	40.17561644	-105.04877277
16417.00	90.00	179.88	7130.00	8143.96S	1835.53W	==>	8338.05	40.17534194	-105.04877387
16517.00	90.00	179.88	7130.00	8243.96S	1835.33W	==>	8436.54	40.17506744	-105.04877497
16617.00	90.00	179.88	7130.00	8343.96S	1835.12W	==>	8535.02	40.17479294	-105.04877607
16717.00	90.00	179.88	7130.00	8443.96S	1834.92W	==>	8633.51	40.17451844	-105.04877717
16817.00	90.00	179.88	7130.00	8543.96S	1834.72W	==>	8731.99	40.17424394	-105.04877826
16917.00	90.00	179.88	7130.00	8643.96S	1834.52W	==>	8830.48	40.17396944	-105.04877936
17017.00	90.00	179.88	7130.00	8743.96S	1834.32W	==>	8928.96	40.17369494	-105.04878046
17117.00	90.00	179.88	7130.00	8843.96S	1834.11W	==>	9027.45	40.17342044	-105.04878156
17217.00	90.00	179.88	7130.00	8943.96S	1833.91W	==>	9125.94	40.17314594	-105.04878266
17317.00	90.00	179.88	7130.00	9043.96S	1833.71W	==>	9224.42	40.17287145	-105.04878376
17417.00	90.00	179.88	7130.00	9143.96S	1833.51W	==>	9322.91	40.17259695	-105.04878485
17517.00	90.00	179.88	7130.00	9243.96S	1833.31W	==>	9421.39	40.17232245	-105.04878595
17617.00	90.00	179.88	7130.00	9343.96S	1833.10W	==>	9519.88	40.17204795	-105.04878705
17717.00	90.00	179.88	7130.00	9443.96S	1832.90W	==>	9618.36	40.17177345	-105.04878815
17817.00	90.00	179.88	7130.00	9543.96S	1832.70W	==>	9716.85	40.17149895	-105.04878924
17917.00	90.00	179.88	7130.00	9643.96S	1832.50W	==>	9815.33	40.17122445	-105.04879034
18017.00	90.00	179.88	7130.00	9743.96S	1832.30W	==>	9913.82	40.17094995	-105.04879144
18117.00	90.00	179.88	7130.00	9843.96S	1832.09W	==>	10012.30	40.17067545	-105.04879254
18217.00	90.00	179.88	7130.00	9943.96S	1831.89W	==>	10110.79	40.17040095	-105.04879364
18317.00	90.00	179.88	7130.00	10043.96S	1831.69W	==>	10209.28	40.17012645	-105.04879473
18417.00	90.00	179.88	7130.00	10143.96S	1831.49W	==>	10307.76	40.16985195	-105.04879583
18517.00	90.00	179.88	7130.00	10243.96S	1831.29W	==>	10406.25	40.16957745	-105.04879693
18617.00	90.00	179.88	7130.00	10343.96S	1831.08W	==>	10504.73	40.16930295	-105.04879803
18717.00	90.00	179.88	7130.00	10443.96S	1830.88W	==>	10603.22	40.16902845	-105.04879913
18796.58	90.00	179.88	7130.00	10523.54S	1830.72W	==>	10681.60	40.16881000	-105.04880000

All data is in Feet unless otherwise stated
Coordinates are from Slot MD's are from Rig and TVD's are from Rig (Planned Datum #1 5010.0ft above Mean Sea Level)
Vertical Section is from 0.00N 0.00E on azimuth 189.87 degrees
Bottom hole distance is 10681.60 Feet on azimuth 189.87 degrees from Wellhead
Calculation method uses Minimum Curvature method
Prepared by
Date Printed: 14-Jul-2020

