

JOB LOG

TICKER NUMBER: KC-382

CEMENTING - ROCKY MOUNTAIN DIVISION

P.O. BOX 827 - VERNAL UT, 84078 - (435) 789-7407

COMPANY NAME: LARAMIE ENERGY

DATE: 6/25/2020

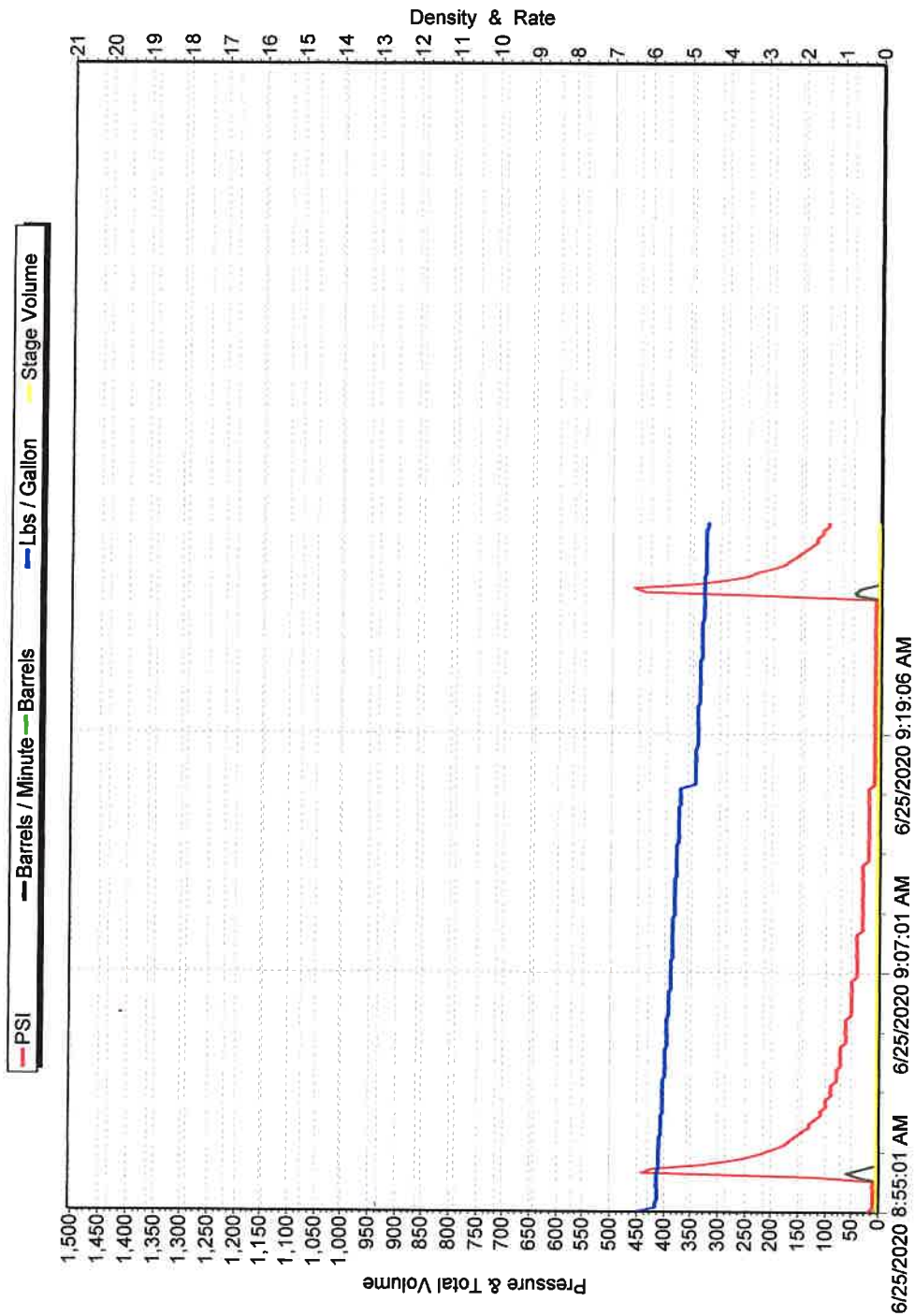
COUNTY: MESA COL

LEASE NAME: HORSESHOE CANYON 2-29

RIG NO: ENSIGN 319[illegible]

OPERATOR: KARL CHAPMAN

SERIES 2000



PROPETRO**JOB LOG****TICKER NUMBER: KJ155****CEMENTING - ROCKY MOUNTAIN DIVISION**

P.O. BOX 827 - VERNAL UT, 84078 - (435) 789-7407

COMPANY NAME: LARAMIE ENERGY**DATE: 06-24-20****COUNTY: MESA****LEASE NAME: HORSESHOE CANYON 2-29****RIG NO: ENSIGN #319**

DECRPTION	TIME	RATE	PSI	VOLUME
ON LOCATION (06-24-20)	7:56			
WIRELINE R.I.H TAG CMT @ 2290 FT				
WIRELINE T.O.H PERF @ 650 FT.				
RIG T.I.H W/2 3/8 TBG (EOT @ 679 FT.)				
RIG UP CMT PUMP TO TBG				
SAFETY MEETING	8:15			
CLOSE IN 8 5/8 OPEN 5 1/2 CSG				
(PLUG #3) START ROLL 5 1/2 CSG (H2O)	8:30	1.3	30	0
END (CLEAR CIRCULATION)	8:37	3	170	16
CLOSE IN 5 1/2 OPEN 8 5/8 CSG				
START ROLL 8 5/8 CSG (H2O)	8:30	3	0	0
END (GOOD CIRCULATION)	8:51	3	240	36
OPEN 5 1/2 & 8 5/8 CSG				
START 15.8# CMT (2% CALCIUM)	9:06	2.5	140	0
END (80 SKS)	9:12	2.5	100	16.3
START DISPLACEMENT (H2O)	9:12	2.5	100	0
END	9:13	2.5	320	1.5
RIG T.O.H				
WAIT FOR CMT TO SET				
WIRELINE R.I.H TAG CMT @ 560 FT.				
WIRELINE T.O.H (PERF @ 500 FT.)				
RIG UP CMT PUMP TO 5 1/2 CSG				
START FILL HOLE (H2O) I/R THRU PERFS	12:09	3.5	100	0
SHUTDOWN MAX PSI	12:11	1.5	500	5
RELEASE PRESSURE BACK TO PUMP	12:12		450	
RE- START CMT PUMP	12:12	1.5	0	5
SHUTDOWN MAX PSI	12:12	1.5	400	5
RELEASE PRESSURE BACK TO PUMP	12:12		320	
RE- START CMT PUMP	12:13	1.5	0	5
END (NO INJECTION)	12:13	1.5	410	5
RELEASE PRESSURE BACK TO PUMP	12:16		150	
CALL FOR LOGGING TOOL				
R.I.H W/LOGGING TOOL				
TAG CMT @ 5 35 FT.				
LOG WELL/NO SIGN OF CMT IN ANNULUS				
START FILL HOLE (H2O) I/R THRU PERFS	15:05	0.7	0	0
SHUTDOWN MAX PSI	15:08	0.7	500	1.7
RELEASE PRESSURE BACK TO PUMP				

OPERATOR: KEVIN JOHNSON**ACCEPTED AND APPROVED BY: JOHN**

TICKER NUMBER: KJ155

CEMENTING - ROCKY MOUNTAIN DIVISION

P.O. BOX 827 - VERNAL UT, 84078 - (435) 789-7407

COMPANY NAME: LARAMIE ENERGY

DATE: 06-24-20

COUNTY: MESA

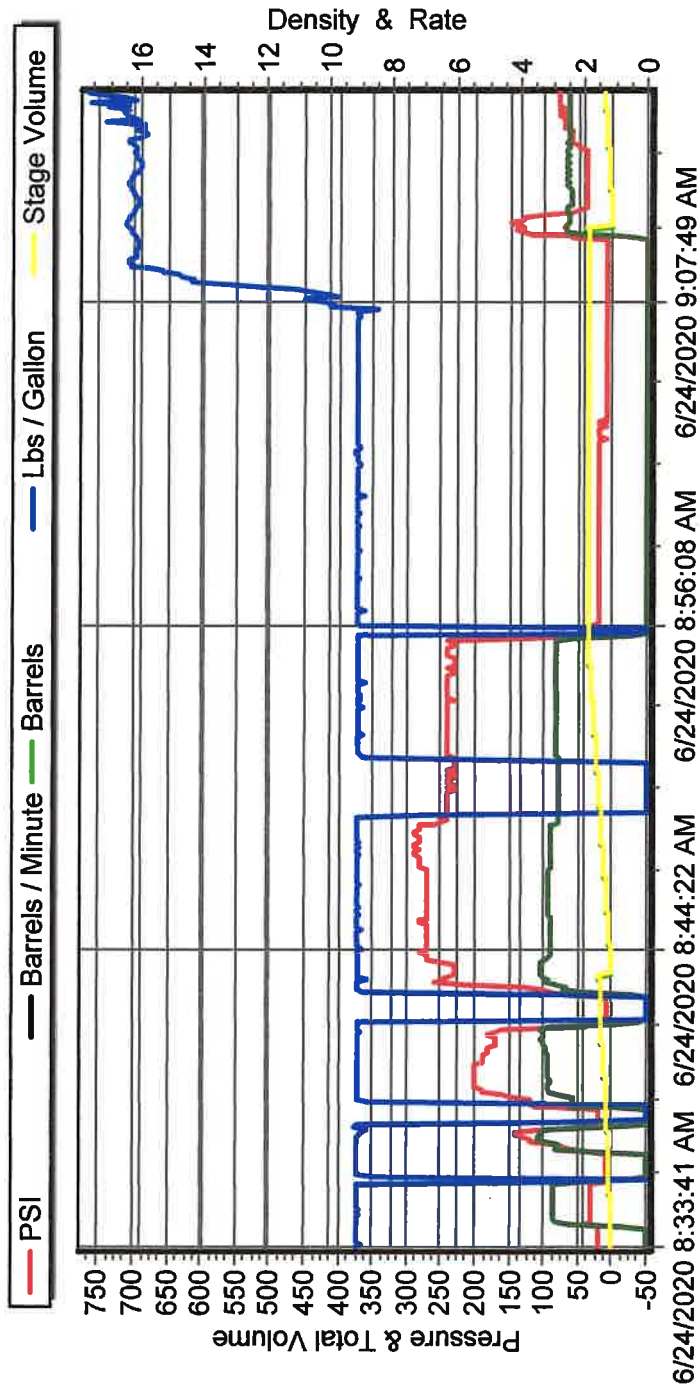
LEASE NAME: HORSESHOE CANYON 2-29

RIG NO: ENSIGN #319[illegible]

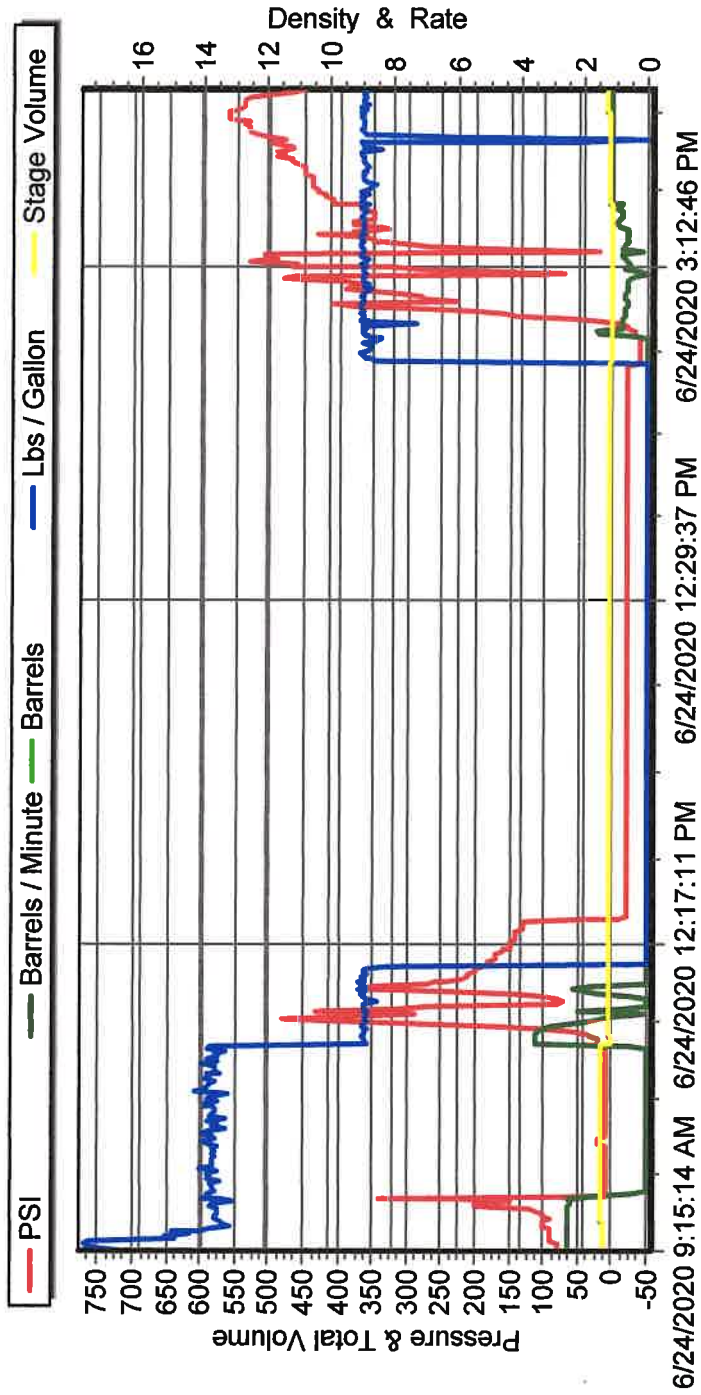
OPERATOR: KEVIN JOHNSON

ACCEPTED AND APPROVED BY: JOHN

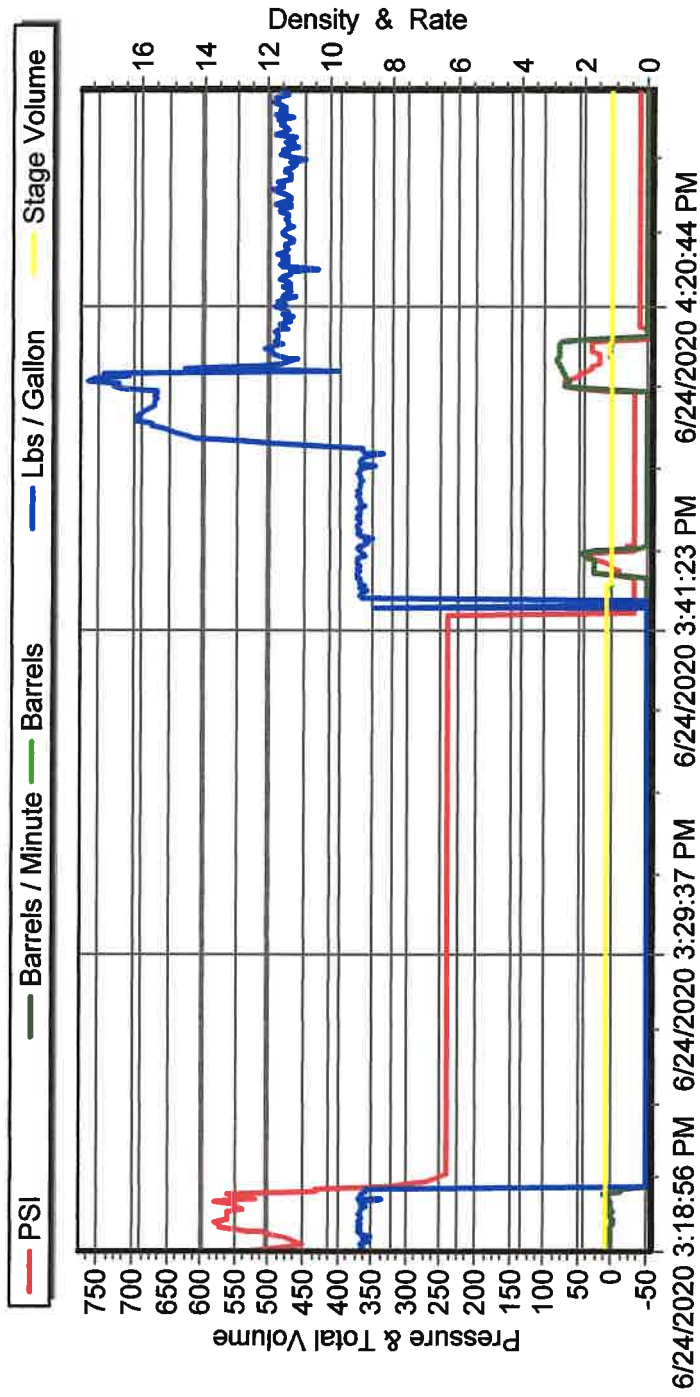
LARAMIE ENERGY HORSESHOE CANYON 2-29 PTA



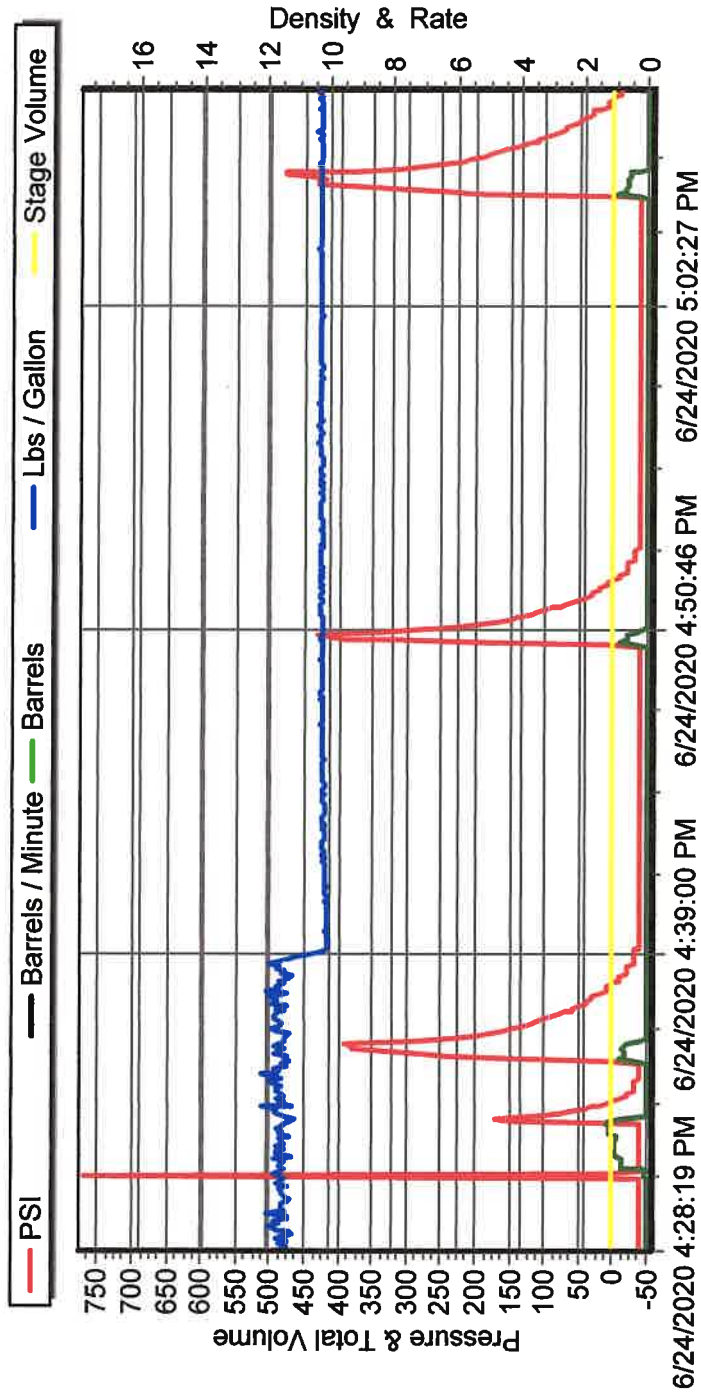
LARAMIE ENERGY HORSESHOE CANYON 2-29 PTA



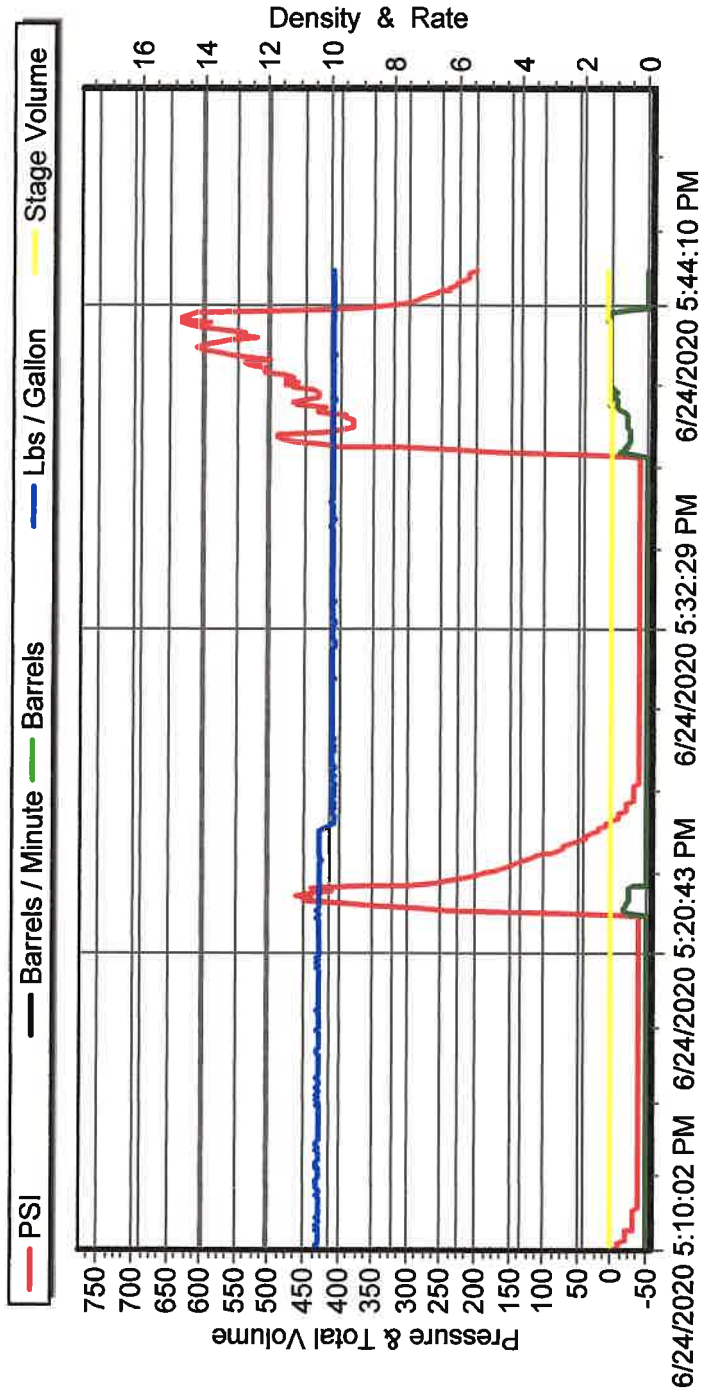
LARAMIE ENERGY HORSESHOE CANYON 2-29 PTA



LARAMIE ENERGY HORSESHOE CANYON 2-29 PTA



LARAMIE ENERGY HORSESHOE CANYON 2-29 PTA



PROPETRO**JOB LOG****TICKER NUMBER: KJ155****CEMENTING - ROCKY MOUNTAIN DIVISION**

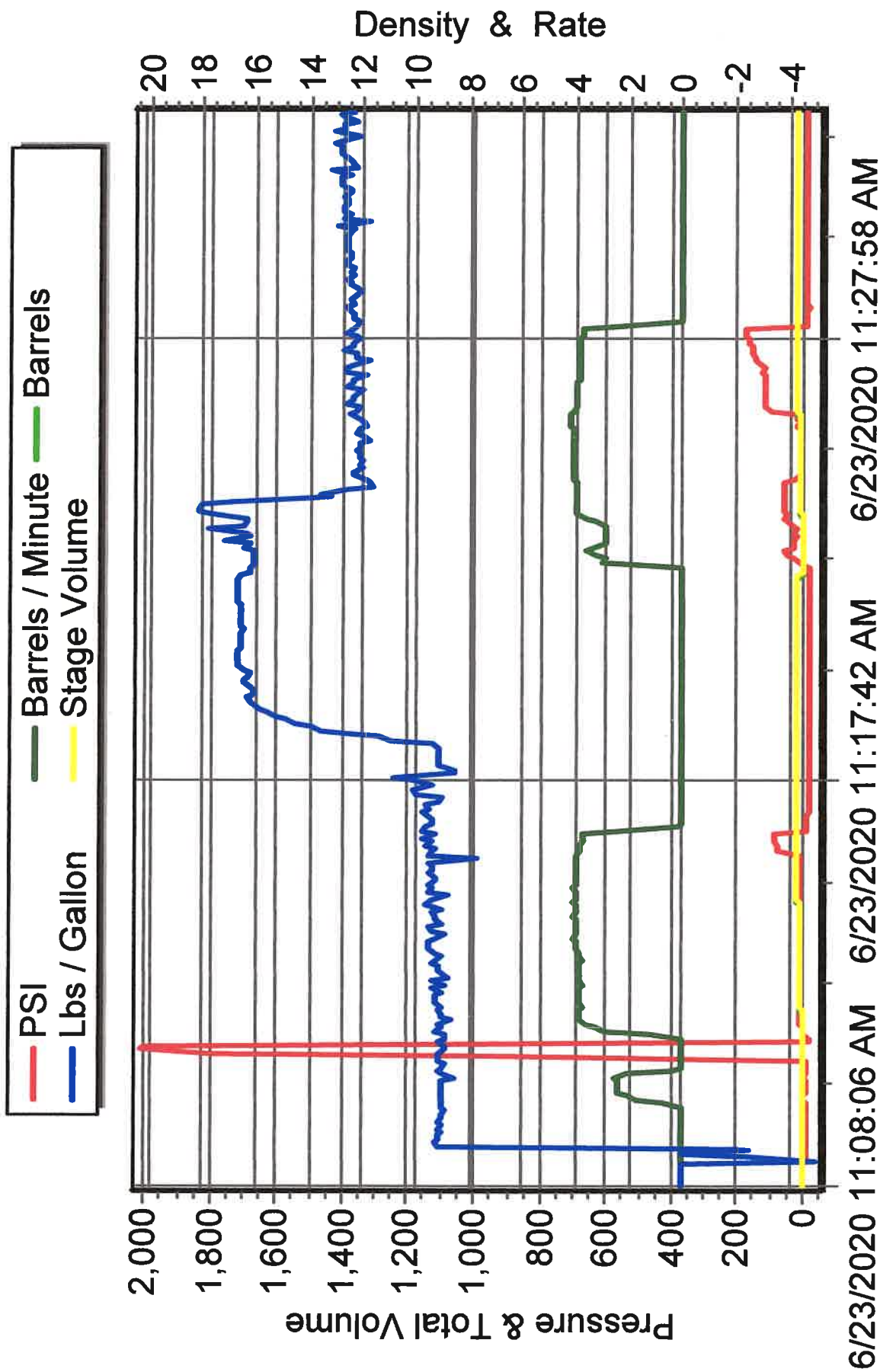
P.O. BOX 827 - VERNAL UT, 84078 - (435) 789-7407

COMPANY NAME: LARAMIE ENERGY**DATE: 06-23-20****COUNTY: MESA****LEASE NAME: HORSESHOE CANYON 2-29****RIG NO: ENSIGN #319**

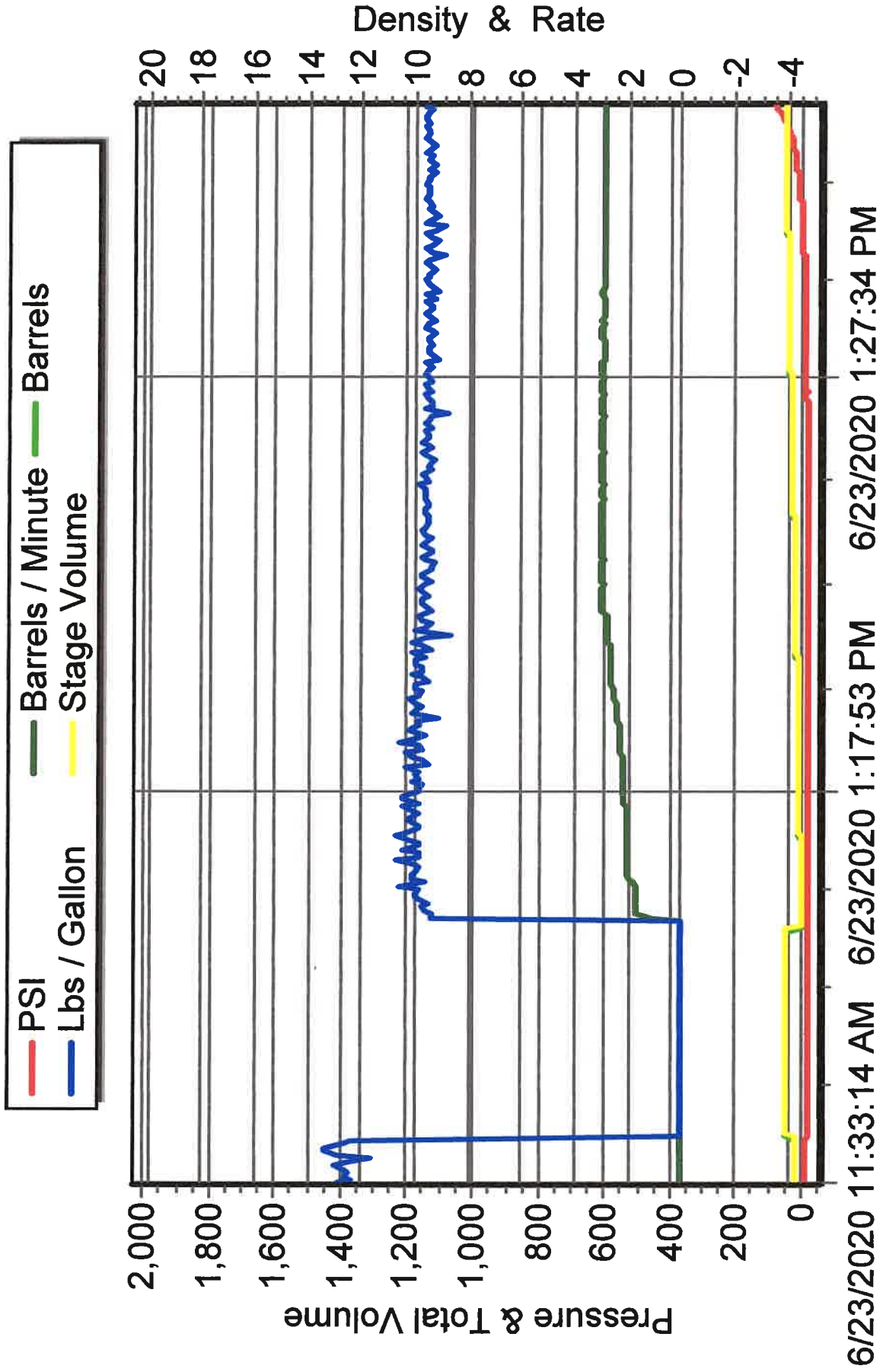
DECRPTION	TIME	RATE	PSI	VOLUME
ON LOCATION (06-23-20)				
WIRELINE R.I.H PERF @ 4400 FT.				
WIRELINE T.O.H				
RIG T.I.H W/2 3/8 TBG (EOT @4406 FT.)				
RIG UP CMT PUMP TO TBG				
SAFETY MEETING	10:45			
PSI TEST PUMP & LINES	11:06	0.5	2500	0/2
(PLUG #1) START CLEAR TBG (H2O)	11:07	3.8	10	0
END (NO CIRCULATION)	11:12	3.8	90	20
START 15.8# CMT (GOOD CIRC)	11:18	3	0	0
END (30 SKS)	11:20	4	60	6.1
START DISPLACEMENT (H2O)	11:20	4	60	0
END (256 FT. CMT PLUG) IN 5 1/2 CSG	11:23	4	160	14
RIG T.O.H				
WIRELINE R.I.H SET CIBP @ 2440 FT.				
WIRELINE T.O.H				0
RIG UP CMT PUMP TO 5 1/2 CSG				
START FILL HOLE PSI TEST CSG	13:02	3	0	0
END (BAD TEST)	13:20	1.5	160	54
WIRELINE R.I.H TAG CIBP @ 2440 FT.				
WIRELINE T.O.H				
PUT 5 1/2 TOP PUG IN CSG				
START PUMP TOP PLUG DOWN HOLE	14:28	3	0	0
CIRCULATION TO SURFACE 8 5/8 CSG	14:33	3	150	15
WIRELINE R.I.H TAG TOP PLUG @ 645 FT.				
WIRELINE T.O.H				
RIG R.I.H PUSH TOP PLUG DOWN				
TO 2409 FT.				
RIG UP CMT PUMP TO TBG				
(PLUG #2) START FILL HOLE (H2O)	15:58	3	0	0
END (CIRCULATION TO SURFACE)	15:59	3	350	3
START 15.8# CMT (GOOD CIRC)	16:02	2	120	0
END (12 SKS)	16:03	2.7	80	2.4
START DISPLACEMENT (H2O)	16:03	2.7	80	0
END (100 FT CMT PLUG)	16:06	2.7	270	7.8
RELEASED FROM LOCATION	16:30			

OPERATOR: KEVIN JOHNSON**ACCEPTED AND APPROVED BY: JOHN**

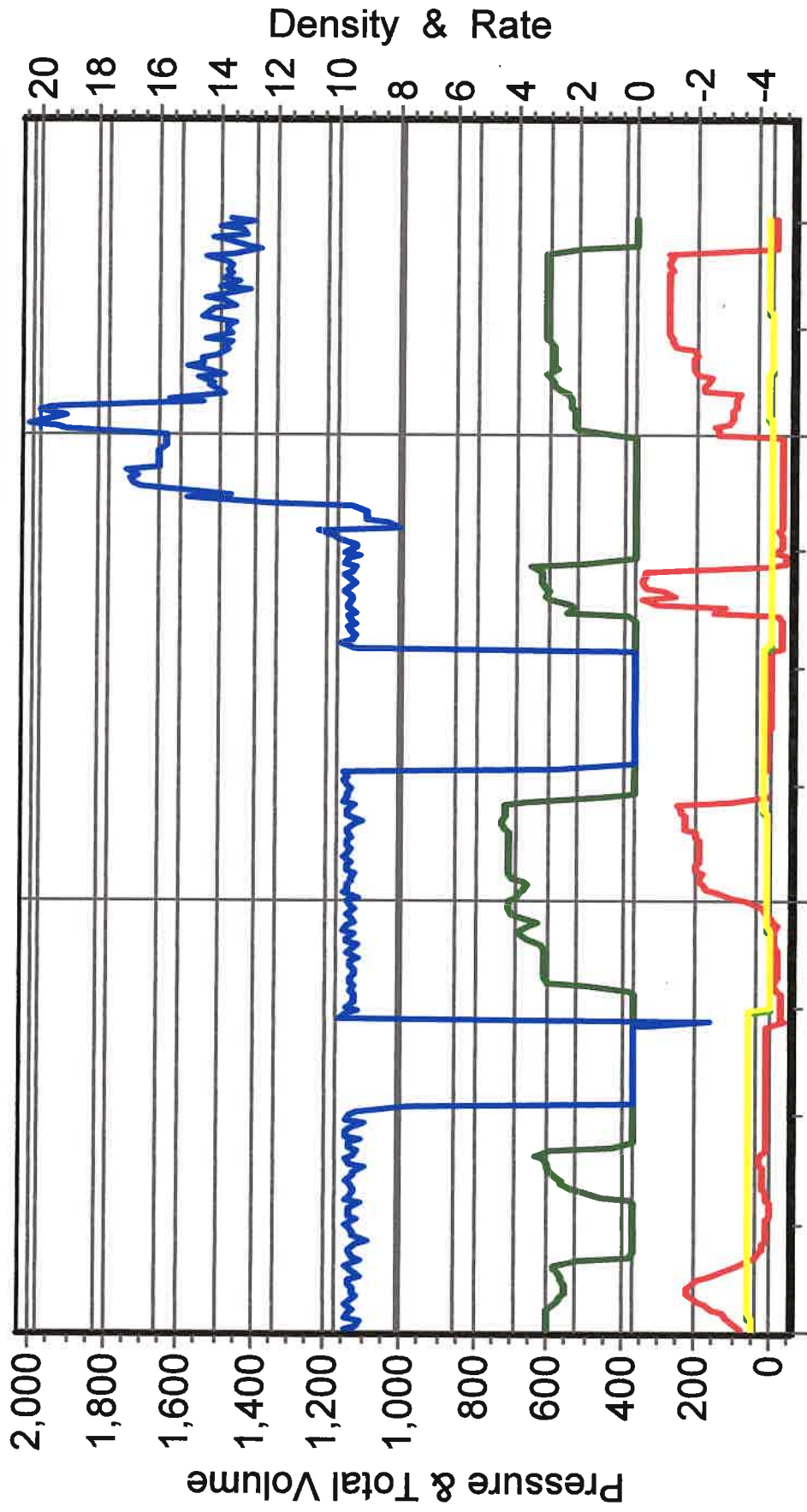
LARAMIE ENERGY HORSESHOE CANYON 2-29 PTA



LARAMIE ENERGY HORSESHOE CANYON 2-29 PTA



LARAMIE ENERGY HORSESHOE CANYON 2-29 PTA



6/23/2020 1:33:50 PM 6/23/2020 2:34:58 PM 6/23/2020 4:06:37 PM