



Crestone Peak Resources

Schlumberger

Plan 0

Borehole:	Well:	Field:	Structure:
Original Hole	Rush 4-65 29-30 3CH	CO, Arapahoe County (NAD 83 CZ)	Crestone Peak 28-04S-65W (Rush South Pad)

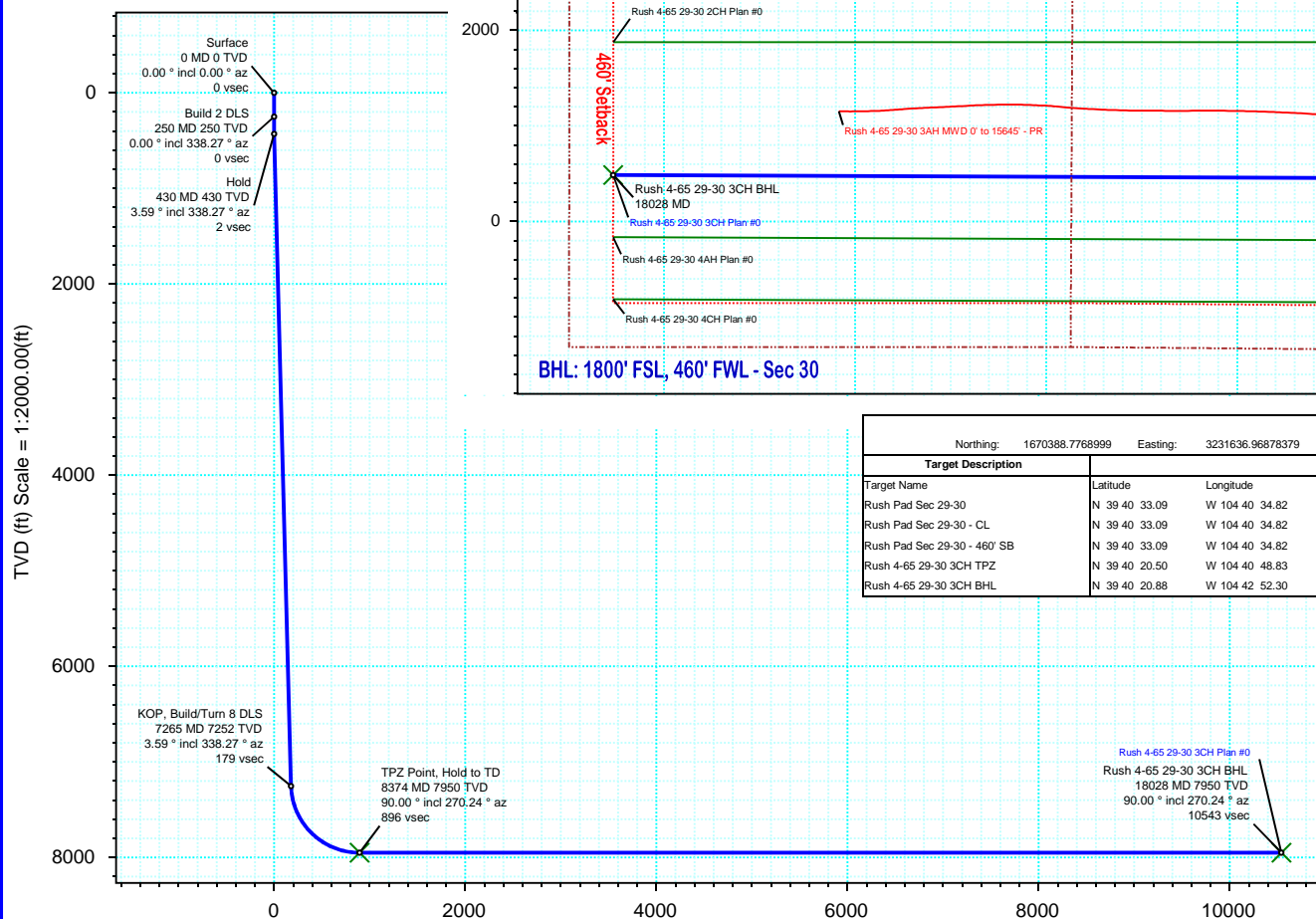
Gravity & Magnetic Parameters					Surface Location				NAD83 Colorado State Plane, Central Zone, US Feet				Miscellaneous			
Model:	HDGM 2020	Dip:	66.348°	Date:	22-Jun-2020	Lat:	N 39 40 16.09	Northing:	1670388.78ftUS	Grid Conv:	0.519°	Slot:	Rush 4-65 29-30 3CH	TVD Ref:	KB 28ft(5723.7ft above MSL)	
MagDec:	8.576°	FS:	51552.976nT	Gravity FS:	998.911mgn (9.80665 Based)	Lon:	W 104 40 37.62	Easting:	3231636.97ftUS	Scale Fact:	0.9998535	Plan:	Rush 4-65 29-30 3CH Plan #0			

Proposal

EW (ft) Scale = 1:2000.00(ft)



True North
Tot Corr (M->T 8.576°)
Mag Dec (8.576°)
Grid Conv (0.519°)



TVD (ft) Scale = 1:2000.00(ft)

NS (ft) Scale = 1:2000.00(ft)

		Surface Location						
		Northing:	Easting:	Latitude:	Longitude:	VSec	Azimuth:	
		1670388.7768999	3231636.96878379	N 39 40 16.09	W 104 40 37.62	272.65		
Target Description		Grid Coord			Local Coord			
Target Name	Latitude	Longitude	Northing	Easting	TVD	VSec	N(+)/S(-)	E(+)/W(-)
Rush Pad Sec 29-30	N 39 40 33.09	W 104 40 34.82	1672111.09	3231840.37	5723.70	-139.29	1720.43	218.99
Rush Pad Sec 29-30 - CL	N 39 40 33.09	W 104 40 34.82	1672111.09	3231840.37	5723.70	-139.29	1720.43	218.99
Rush Pad Sec 29-30 - 460' SB	N 39 40 33.09	W 104 40 34.82	1672111.09	3231840.37	5723.70	-139.29	1720.43	218.99
Rush 4-65 29-30 3CH TPZ	N 39 40 20.50	W 104 40 48.83	1670827.78	3230756.39	7950.00	896.30	446.97	-876.58
Rush 4-65 29-30 3CH BHL	N 39 40 20.88	W 104 42 52.30	1670780.37	3221101.78	7950.00	10542.64	487.01	-10531.39

Critical Points								
Critical Point	MD	INCL	AZIM	TVD	VSEC	N(+)/S(-)	E(+)/W(-)	DLS
Surface	0.00	0.00	0.00	0.00	0.00	0.00	0.00	
Build 2 DLS	250.00	0.00	338.27	250.00	0.00	0.00	0.00	0.00
Hold	429.72	3.59	338.27	429.60	2.33	5.23	-2.09	2.00
KOP, Build/Turn 8 DLS	7265.35	3.59	338.27	7251.78	179.22	403.33	-160.76	0.00
TPZ Point, Hold to TD	8373.55	90.00	270.24	7950.00	896.30	446.97	-876.58	8.00
Rush 4-65 29-30 3CH BHL	18028.44	90.00	270.24	7950.00	10542.64	487.01	-10531.39	0.00

Vertical Section (ft) Azim = 272.65° Scale = 1:2000.00(ft) Origin = 0N/-S, 0E/-W

Rush 4-65 29-30 3CH Plan #0 Proposal Geodetic Report

(Def Plan)

Report Date: June 24, 2020 - 02:42 PM
Client: Crestone Peak Resources
Field: CO, Arapahoe County (NAD 83 CZ)
Structure / Slot: Crestone Peak 28-04S-65W (Rush South Pad) / Rush 4-65 29-30 3CH
Well: Rush 4-65 29-30 3CH
Borehole: Original Hole
UWI / API#: Unknown / Unknown
Survey Name: Rush 4-65 29-30 3CH Plan #0
Survey Date: June 22, 2020
Tort / AHD / DDI / ERD Ratio: 92.250 ° / 10808.788 ft / 6.354 / 1.360
Coordinate Reference System: NAD83 Colorado State Plane, Central Zone, US Feet
Location Lat / Long: N 39° 40' 16.08600", W 104° 40' 37.62120"
Location Grid N/E Y/X: N 1670388.777 ftUS, E 3231636.969 ftUS
CRS Grid Convergence Angle: 0.5190 °
Grid Scale Factor: 0.99998535
Version / Patch: 2.10.810.1

Survey / DLS Computation: Minimum Curvature / Lubinski
Vertical Section Azimuth: 272.648 ° (True North)
Vertical Section Origin: 0.000 ft, 0.000 ft
TVD Reference Datum: KB 28ft
TVD Reference Elevation: 5723.700 ft above MSL
Seabed / Ground Elevation: 5695.700 ft above MSL
Magnetic Declination: 8.576 °
Total Gravity Field Strength: 998.9111mgn (9.80665 Based)
Gravity Model: GARM
Total Magnetic Field Strength: 51552.976 nT
Magnetic Dip Angle: 66.348 °
Declination Date: June 22, 2020
Magnetic Declination Model: HDGM 2020
North Reference: True North
Grid Convergence Used: 0.0000 °
Total Corr Mag North->True North: 8.5761 °
Local Coord Referenced To: Well Head

Comments	MD (ft)	Incl (°)	Azim True (°)	TVD (ft)	VSEC (ft)	NS (ft)	EW (ft)	DLS (°/100ft)	Northing (ftUS)	Easting (ftUS)	Latitude (°)	Longitude (°)
Surface	0.00	0.00	0.00	0.00	0.00	0.00	0.00	N/A	1670388.78	3231636.97	39.671135	-104.677117
	100.00	0.00	338.27	100.00	0.00	0.00	0.00	0.00	1670388.78	3231636.97	39.671135	-104.677117
	200.00	0.00	338.27	200.00	0.00	0.00	0.00	0.00	1670388.78	3231636.97	39.671135	-104.677117
Build 2 DLS	250.00	0.00	338.27	250.00	0.00	0.00	0.00	0.00	1670388.78	3231636.97	39.671135	-104.677117
	300.00	1.00	338.27	300.00	0.18	0.41	-0.16	2.00	1670389.18	3231636.80	39.671136	-104.677118
	400.00	3.00	338.27	399.93	1.62	3.65	-1.45	2.00	1670392.41	3231635.48	39.671145	-104.677122
Hold	429.72	3.59	338.27	429.60	2.33	5.23	-2.09	2.00	1670393.99	3231634.83	39.671149	-104.677124
	500.00	3.59	338.27	499.74	4.14	9.33	-3.72	0.00	1670398.07	3231633.17	39.671161	-104.677130
	600.00	3.59	338.27	599.55	6.73	15.15	-6.04	0.00	1670403.87	3231630.79	39.671177	-104.677138
	700.00	3.59	338.27	699.35	9.32	20.98	-8.36	0.00	1670409.68	3231628.42	39.671193	-104.677147
	800.00	3.59	338.27	799.15	11.91	26.80	-10.68	0.00	1670415.48	3231626.04	39.671209	-104.677155
	900.00	3.59	338.27	898.96	14.50	32.62	-13.00	0.00	1670421.28	3231623.67	39.671225	-104.677163
	1000.00	3.59	338.27	998.76	17.08	38.45	-15.32	0.00	1670427.08	3231621.30	39.671241	-104.677171
	1100.00	3.59	338.27	1098.56	19.67	44.27	-17.65	0.00	1670432.88	3231618.92	39.671257	-104.677180
	1200.00	3.59	338.27	1198.37	22.26	50.09	-19.97	0.00	1670438.69	3231616.55	39.671273	-104.677188
	1300.00	3.59	338.27	1298.17	24.85	55.92	-22.29	0.00	1670444.49	3231614.18	39.671289	-104.677196
	1400.00	3.59	338.27	1397.97	27.44	61.74	-24.61	0.00	1670450.29	3231611.80	39.671304	-104.677204
	1500.00	3.59	338.27	1497.78	30.02	67.57	-26.93	0.00	1670456.09	3231609.43	39.671320	-104.677213
	1600.00	3.59	338.27	1597.58	32.61	73.39	-29.25	0.00	1670461.90	3231607.05	39.671336	-104.677221
	1700.00	3.59	338.27	1697.38	35.20	79.21	-31.57	0.00	1670467.70	3231604.68	39.671352	-104.677229
	1800.00	3.59	338.27	1797.19	37.79	85.04	-33.89	0.00	1670473.50	3231602.31	39.671368	-104.677237
	1900.00	3.59	338.27	1896.99	40.37	90.86	-36.22	0.00	1670479.30	3231599.93	39.671384	-104.677246
	2000.00	3.59	338.27	1996.79	42.96	96.68	-38.54	0.00	1670485.11	3231597.56	39.671400	-104.677254
	2100.00	3.59	338.27	2096.60	45.55	102.51	-40.86	0.00	1670490.91	3231595.18	39.671416	-104.677262
	2200.00	3.59	338.27	2196.40	48.14	108.33	-43.18	0.00	1670496.71	3231592.81	39.671432	-104.677270
	2300.00	3.59	338.27	2296.20	50.73	114.16	-45.50	0.00	1670502.51	3231590.44	39.671448	-104.677279
	2400.00	3.59	338.27	2396.01	53.31	119.98	-47.82	0.00	1670508.32	3231588.06	39.671464	-104.677287
	2500.00	3.59	338.27	2495.81	55.90	125.80	-50.14	0.00	1670514.12	3231585.69	39.671480	-104.677295
	2600.00	3.59	338.27	2595.61	58.49	131.63	-52.46	0.00	1670519.92	3231583.32	39.671496	-104.677303
	2700.00	3.59	338.27	2695.42	61.08	137.45	-54.79	0.00	1670525.72	3231580.94	39.671512	-104.677312
	2800.00	3.59	338.27	2795.22	63.66	143.27	-57.11	0.00	1670531.53	3231578.57	39.671528	-104.677320
	2900.00	3.59	338.27	2895.02	66.25	149.10	-59.43	0.00	1670537.33	3231576.19	39.671544	-104.677328
	3000.00	3.59	338.27	2994.83	68.84	154.92	-61.75	0.00	1670543.13	3231573.82	39.671560	-104.677336
	3100.00	3.59	338.27	3094.63	71.43	160.75	-64.07	0.00	1670548.93	3231571.45	39.671576	-104.677345
	3200.00	3.59	338.27	3194.43	74.02	166.57	-66.39	0.00	1670554.74	3231569.07	39.671592	-104.677353
	3300.00	3.59	338.27	3294.24	76.60	172.39	-68.71	0.00	1670560.54	3231566.70	39.671608	-104.677361
	3400.00	3.59	338.27	3394.04	79.19	178.22	-71.03	0.00	1670566.34	3231564.32	39.671624	-104.677369
	3500.00	3.59	338.27	3493.84	81.78	184.04	-73.36	0.00	1670572.14	3231561.95	39.671640	-104.677378
	3600.00	3.59	338.27	3593.65	84.37	189.86	-75.68	0.00	1670577.95	3231559.58	39.671656	-104.677386
	3700.00	3.59	338.27	3693.45	86.95	195.69	-78.00	0.00	1670583.75	3231557.20	39.671672	-104.677394
	3800.00	3.59	338.27	3793.25	89.54	201.51	-80.32	0.00	1670589.55	3231554.83	39.671688	-104.677402
	3900.00	3.59	338.27	3893.06	92.13	207.34	-82.64	0.00	1670595.35	3231552.45	39.671704	-104.677411
	4000.00	3.59	338.27	3992.86	94.72	213.16	-84.96	0.00	1670601.15	3231550.08	39.671720	-104.677419
	4100.00	3.59	338.27	4092.66	97.31	218.98	-87.28	0.00	1670606.96	3231547.71	39.671736	-104.677427
	4200.00	3.59	338.27	4192.47	99.89	224.81	-89.60	0.00	1670612.76	3231545.33	39.671752	-104.677435
	4300.00	3.59	338.27	4292.27	102.48	230.63	-91.93	0.00	1670618.56	3231542.96	39.671768	-104.677444
	4400.00	3.59	338.27	4392.07	105.07	236.45	-94.25	0.00	1670624.36	3231540.59	39.671784	-104.677452
	4500.00	3.59	338.27	4491.88	107.66	242.28	-96.57	0.00	1670630.17	3231538.21	39.671800	-104.677460
	4600.00	3.59	338.27	4591.68	110.24	248.10	-98.89	0.00	1670635.97	3231535.84	39.671816	-104.677468
	4700.00	3.59	338.27	4691.48	112.83	253.93	-101.21	0.00	1670641.77	3231533.46	39.671832	-104.677477
	4800.00	3.59	338.27	4791.29	115.42	259.75	-103.53	0.00	1670647.57	3231531.09	39.671848	-104.677485
	4900.00	3.59	338.27	4891.09	118.01	265.57	-105.85	0.00	1670653.38	3231528.72	39.671864	-104.677493
	5000.00	3.59	338.27	4990.89	120.60	271.40	-108.17	0.00	1670659.18	3231526.34	39.671880	-104.677501
	5100.00	3.59	338.27	5090.69	123.18	277.22	-110.50	0.00	1670664.98	3231523.97	39.671896	-104.677510
	5200.00	3.59	338.27	5190.50	125.77	283.04	-112.82	0.00	1670670.78	3231521.59	39.671912	-104.677518
	5300.00	3.59	338.27	5290.30	128.36	288.87	-115.14	0.00	1670676.59	3231519.22	39.671928	-104.677526
	5400.00	3.59	338.27	5390.10	130.95	294.69	-117.46	0.00	1670682.39	3231516.85	39.671944	-104.677534
	5500.00	3.59	338.27	5489.91	133.54	300.52	-119.78	0.00	1670688.19	3231514.47	39.671960	-104.677543
	5600.00	3.59	338.27	5589.71	136.12	306.34	-122.10	0.00	1670693.99	3231512.10	39.671976	-104.677551
	5700.00	3.59	338.27	5689.51	138.71	312.16	-124.42	0.00	1670699.80	3231509.72	39.671992	-104.677559
	5800.00	3.59	338.27	5789.32	141.30	317.99	-126.74	0.00	1670705.60	3231507.35	39.672008	-104.677567
	5900.00	3.59	338.27	5889.12	143.89	323.81	-129.07	0.00	1670711.40	3231504.98	39.672024	-104.677575
	6000.00	3.59	338.27	5988.92	146.47	329.64	-131.39	0.00	1670717.20	3231502.60	39.672040	-104.677584
	6100.00	3.59	338.27	6088.73	149.06	335.46	-133.71	0.00	1670723.01	3231500.23	39.672056	-104.677592
	6200.00	3.59	338.27	6188.53	151.65	341.28	-136.03	0.00	1670728.81	3231497.86	39.672072	-104.677600
	6300.00	3.59	338.27	6288.33	154.24	347.11	-138.35	0.00	1670734.61	3231495.48	39.672088	-104.677608
	6400.00	3.59	338.27	6388.14	156.83	352.93	-140.67	0.00	1670740.41	3231493.11	39.672104	-104.677617
	6500.00	3.59	338.27	6487.94	159.41	358.75	-142.99	0.00	1670746.21	3231490.73	39.672120	-104.677625
	6600.00	3.59	338.27	6587.74	162.00	364.58	-145.31	0.00	1670752.02	3231488.36	39.672136	-104.677633
	6700.00	3.59	338.27	6687.55	164.59	370.40	-147.64	0.00	1670757.82	3231485.99	39.672152	-104.677641
	6800.00	3.59	338.27	6787.35	167.18	376.23	-149.96	0.00	1670763.62	3231483.61	39.672168	-104.677650
	6900.00	3.59	338.27	6887.15	169.76	382.05	-152.28	0.00	1670769.42	3231481.24	39.672184	-104.677658
	7000.00	3.59	338.27	6986.96	172.35	387.87	-154.60	0.00	1670775.23	3231478.86	39.672200	-104.67

Comments	MD (ft)	Incl (°)	Azim True (°)	TVD (ft)	VSEC (ft)	NS (ft)	EW (ft)	DLS (°/100ft)	Northing (ftUS)	Easting (ftUS)	Latitude (°)	Longitude (°)
TPZ Point, Hold to TD	7300.00	5.30	309.18	7286.33	180.95	405.35	-162.40	8.00	1670792.63	3231470.91	39.672248	-104.677694
	7400.00	12.56	285.40	7385.08	195.29	411.16	-176.48	8.00	1670798.31	3231456.77	39.672264	-104.677744
	7500.00	20.38	279.26	7480.91	223.23	416.85	-204.20	8.00	1670803.76	3231429.01	39.672279	-104.677842
	7600.00	28.30	276.45	7571.96	264.25	422.33	-245.00	8.00	1670808.86	3231388.16	39.672294	-104.677987
	7700.00	36.25	274.79	7656.44	317.53	427.47	-298.10	8.00	1670813.52	3231335.02	39.672309	-104.678176
	7800.00	44.22	273.67	7732.73	382.04	432.18	-362.46	8.00	1670817.65	3231270.61	39.672321	-104.678405
	7900.00	52.19	272.83	7799.32	456.53	436.37	-436.83	8.00	1670821.16	3231196.21	39.672333	-104.678669
	8000.00	60.17	272.15	7854.93	539.54	439.95	-519.77	8.00	1670824.00	3231113.24	39.672343	-104.678963
	8100.00	68.15	271.58	7898.48	629.46	442.86	-609.65	8.00	1670826.09	3231023.34	39.672351	-104.679283
	8200.00	76.14	271.06	7929.11	724.54	445.04	-704.74	8.00	1670827.41	3230928.24	39.672357	-104.679621
	8300.00	84.13	270.58	7946.23	822.93	446.45	-803.17	8.00	1670827.92	3230829.81	39.672361	-104.679970
	8373.55	90.00	270.24	7950.00	896.30	446.97	-876.58	8.00	1670827.78	3230756.39	39.672362	-104.680231
	8400.00	90.00	270.24	7950.00	922.72	447.08	-903.04	0.00	1670827.65	3230729.94	39.672362	-104.680325
	8500.00	90.00	270.24	7950.00	1022.63	447.49	-1003.03	0.00	1670827.16	3230629.94	39.672363	-104.680680
	8600.00	90.00	270.24	7950.00	1122.55	447.91	-1103.03	0.00	1670826.67	3230529.94	39.672365	-104.681035
	8700.00	90.00	270.24	7950.00	1222.46	448.32	-1203.03	0.00	1670826.18	3230429.94	39.672366	-104.681391
	8800.00	90.00	270.24	7950.00	1322.37	448.74	-1303.03	0.00	1670825.69	3230329.95	39.672367	-104.681746
	8900.00	90.00	270.24	7950.00	1422.28	449.15	-1403.03	0.00	1670825.20	3230229.95	39.672368	-104.682101
	9000.00	90.00	270.24	7950.00	1522.19	449.57	-1503.03	0.00	1670824.70	3230129.95	39.672369	-104.682456
	9100.00	90.00	270.24	7950.00	1622.10	449.98	-1603.03	0.00	1670824.21	3230029.96	39.672370	-104.682812
	9200.00	90.00	270.24	7950.00	1722.02	450.40	-1703.03	0.00	1670823.72	3229929.96	39.672371	-104.683167
	9300.00	90.00	270.24	7950.00	1821.93	450.81	-1803.03	0.00	1670823.23	3229829.96	39.672372	-104.683522
	9400.00	90.00	270.24	7950.00	1921.84	451.23	-1903.03	0.00	1670822.74	3229729.97	39.672374	-104.683877
	9500.00	90.00	270.24	7950.00	2021.75	451.64	-2003.03	0.00	1670822.25	3229629.97	39.672375	-104.684233
	9600.00	90.00	270.24	7950.00	2121.66	452.06	-2103.02	0.00	1670821.76	3229529.97	39.672376	-104.684588
	9700.00	90.00	270.24	7950.00	2221.57	452.47	-2203.02	0.00	1670821.27	3229429.97	39.672377	-104.684943
	9800.00	90.00	270.24	7950.00	2321.49	452.88	-2303.02	0.00	1670820.78	3229329.98	39.672378	-104.685298
	9900.00	90.00	270.24	7950.00	2421.40	453.30	-2403.02	0.00	1670820.28	3229229.98	39.672379	-104.685654
	10000.00	90.00	270.24	7950.00	2521.31	453.71	-2503.02	0.00	1670819.79	3229129.98	39.672380	-104.686009
	10100.00	90.00	270.24	7950.00	2621.22	454.13	-2603.02	0.00	1670819.30	3229029.99	39.672381	-104.686364
	10200.00	90.00	270.24	7950.00	2721.13	454.54	-2703.02	0.00	1670818.81	3228929.99	39.672382	-104.686719
	10300.00	90.00	270.24	7950.00	2821.04	454.96	-2803.02	0.00	1670818.32	3228829.99	39.672384	-104.687075
	10400.00	90.00	270.24	7950.00	2920.95	455.37	-2903.02	0.00	1670817.83	3228729.99	39.672385	-104.687430
	10500.00	90.00	270.24	7950.00	3020.87	455.79	-3003.02	0.00	1670817.34	3228630.00	39.672386	-104.687785
	10600.00	90.00	270.24	7950.00	3120.78	456.20	-3103.02	0.00	1670816.85	3228530.00	39.672387	-104.688140
	10700.00	90.00	270.24	7950.00	3220.69	456.62	-3203.02	0.00	1670816.36	3228430.00	39.672388	-104.688495
	10800.00	90.00	270.24	7950.00	3320.60	457.03	-3303.01	0.00	1670815.86	3228330.01	39.672389	-104.688851
	10900.00	90.00	270.24	7950.00	3420.51	457.45	-3403.01	0.00	1670815.37	3228230.01	39.672390	-104.689206
	11000.00	90.00	270.24	7950.00	3520.42	457.86	-3503.01	0.00	1670814.88	3228130.01	39.672391	-104.689561
	11100.00	90.00	270.24	7950.00	3620.34	458.28	-3603.01	0.00	1670814.39	3228030.01	39.672392	-104.689916
	11200.00	90.00	270.24	7950.00	3720.25	458.69	-3703.01	0.00	1670813.90	3227930.02	39.672393	-104.690272
	11300.00	90.00	270.24	7950.00	3820.16	459.11	-3803.01	0.00	1670813.41	3227830.02	39.672395	-104.690627
	11400.00	90.00	270.24	7950.00	3920.07	459.52	-3903.01	0.00	1670812.92	3227730.02	39.672396	-104.690982
	11500.00	90.00	270.24	7950.00	4019.98	459.93	-4003.01	0.00	1670812.43	3227630.03	39.672397	-104.691337
	11600.00	90.00	270.24	7950.00	4119.89	460.35	-4103.01	0.00	1670811.94	3227530.03	39.672398	-104.691693
	11700.00	90.00	270.24	7950.00	4219.80	460.76	-4203.01	0.00	1670811.44	3227430.03	39.672399	-104.692048
	11800.00	90.00	270.24	7950.00	4319.72	461.18	-4303.01	0.00	1670810.95	3227330.03	39.672400	-104.692403
11900.00	90.00	270.24	7950.00	4419.63	461.59	-4403.00	0.00	1670810.46	3227230.04	39.672401	-104.692758	
12000.00	90.00	270.24	7950.00	4519.54	462.01	-4503.00	0.00	1670809.97	3227130.04	39.672402	-104.693114	
12100.00	90.00	270.24	7950.00	4619.45	462.42	-4603.00	0.00	1670809.48	3227030.04	39.672403	-104.693469	
12200.00	90.00	270.24	7950.00	4719.36	462.84	-4703.00	0.00	1670808.99	3226930.05	39.672404	-104.693824	
12300.00	90.00	270.24	7950.00	4819.27	463.25	-4803.00	0.00	1670808.50	3226830.05	39.672406	-104.694179	
12400.00	90.00	270.24	7950.00	4919.19	463.67	-4903.00	0.00	1670808.01	3226730.05	39.672407	-104.694535	
12500.00	90.00	270.24	7950.00	5019.10	464.08	-5003.00	0.00	1670807.52	3226630.05	39.672408	-104.694890	
12600.00	90.00	270.24	7950.00	5119.01	464.50	-5103.00	0.00	1670807.02	3226530.06	39.672409	-104.695245	
12700.00	90.00	270.24	7950.00	5218.92	464.91	-5203.00	0.00	1670806.53	3226430.06	39.672410	-104.695600	
12800.00	90.00	270.24	7950.00	5318.83	465.33	-5303.00	0.00	1670806.04	3226330.06	39.672411	-104.695956	
12900.00	90.00	270.24	7950.00	5418.74	465.74	-5403.00	0.00	1670805.55	3226230.07	39.672412	-104.696311	
13000.00	90.00	270.24	7950.00	5518.65	466.15	-5503.00	0.00	1670805.06	3226130.07	39.672413	-104.696666	
13100.00	90.00	270.24	7950.00	5618.57	466.57	-5602.99	0.00	1670804.57	3226030.07	39.672414	-104.697021	
13200.00	90.00	270.24	7950.00	5718.48	466.98	-5702.99	0.00	1670804.08	3225930.07	39.672415	-104.697376	
13300.00	90.00	270.24	7950.00	5818.39	467.40	-5802.99	0.00	1670803.59	3225830.08	39.672416	-104.697732	
13400.00	90.00	270.24	7950.00	5918.30	467.81	-5902.99	0.00	1670803.10	3225730.08	39.672417	-104.698087	
13500.00	90.00	270.24	7950.00	6018.21	468.23	-6002.99	0.00	1670802.60	3225630.08	39.672418	-104.698442	
13600.00	90.00	270.24	7950.00	6118.12	468.64	-6102.99	0.00	1670802.11	3225530.09	39.672420	-104.698797	
13700.00	90.00	270.24	7950.00	6218.04	469.06	-6202.99	0.00	1670801.62	3225430.09	39.672421	-104.699153	
13800.00												

Comments	MD (ft)	Incl (°)	Azim True (°)	TVD (ft)	VSEC (ft)	NS (ft)	EW (ft)	DLS (°/100ft)	Northing (ftUS)	Easting (ftUS)	Latitude (°)	Longitude (°)
Rush 4-65 29-30 3CH BHL	18000.00 18028.44	90.00 90.00	270.24 270.24	7950.00 7950.00	10514.23 10542.64	486.89 487.01	-10502.95 -10531.39	0.00 0.00	1670780.51 1670780.37	3221130.21 3221101.78	39.672466 39.672466	-104.714428 -104.714529

Survey Type: Def Plan

Survey Error Model: ISCWSA Rev 0 *** 3-D 95.000% Confidence 2.7955 sigma
Survey Program:

Description	Part	MD From (ft)	MD To (ft)	EOU Freq (ft)	Hole Size (in)	Casing Diameter (in)	Expected Max Inclination (deg)	Survey Tool Type	Borehole / Survey
	1	0.000	28.000	1/100.000	13.500	9.625		NAL_MWD_PLUS_0.5_DEG- Depth Only	Original Hole / Rush 4-65 29-30 3CH Plan #0
	1	28.000	2000.000	1/100.000	13.500	9.625		NAL_MWD_PLUS_0.5_DEG	Original Hole / Rush 4-65 29-30 3CH Plan #0
	1	2000.000	18028.436	1/100.000	8.500	5.500		NAL_MWD_PLUS_0.5_DEG	Original Hole / Rush 4-65 29-30 3CH Plan #0