

LEGEND:

- = PROPOSED WELLHEAD.
- = TARGET BOTTOM HOLE.
- ◆ = TOP PRODUCTION ZONE.
- ▲ = SECTION CORNERS LOCATED. (NAD 83)

NOTE:

Distances referenced on plat to section lines are perpendicular.

LINE TABLE

LINE	DIRECTION	LENGTH
L1	N62°52'04"W	984.45'

T4S, R65W, 6th P.M.

CRESTONE PEAK RESOURCES OPERATING LLC

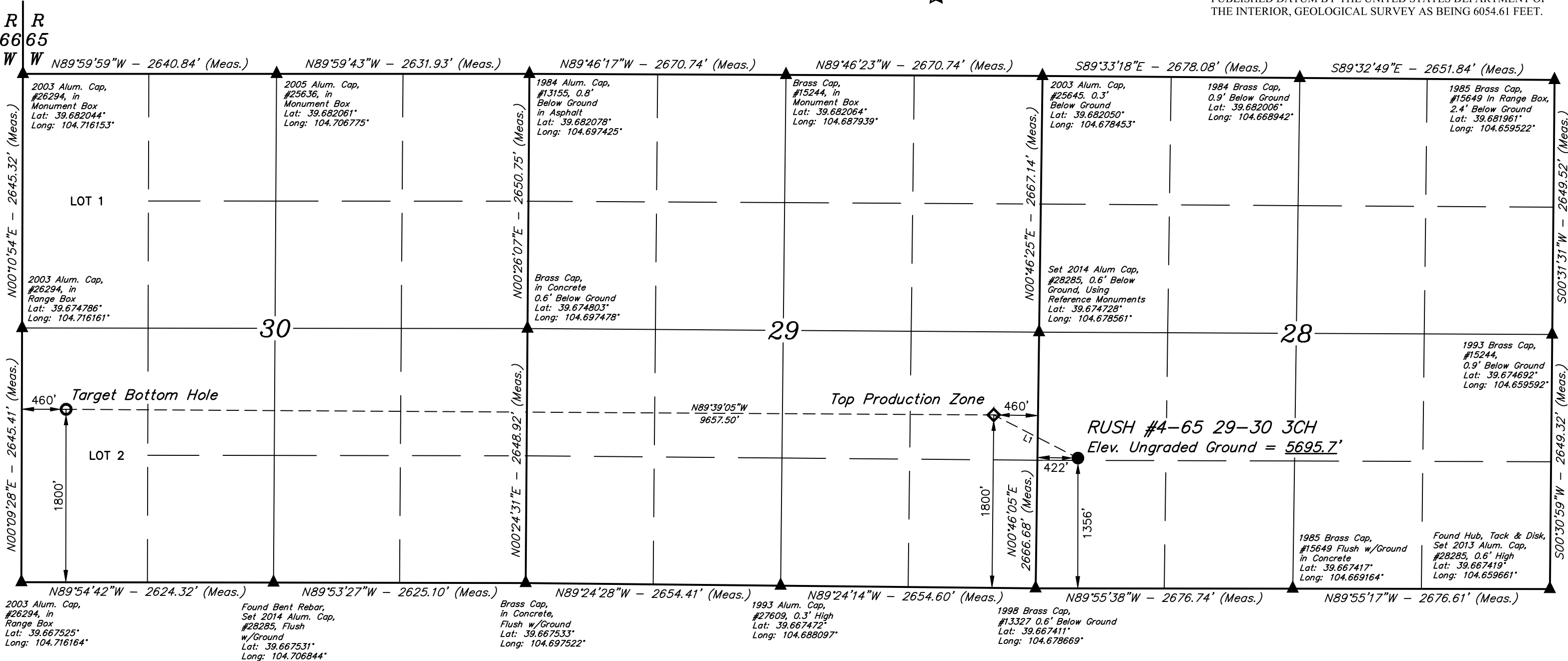
RUSH #4-65 29-30 3CH  
NW 1/4 SW 1/4, SECTION 28, T4S, R65W, 6th P.M.  
ARAPAHOE COUNTY, COLORADO

BASIS OF BEARINGS

BASIS OF BEARINGS IS A G.P.S. OBSERVATION

BASIS OF ELEVATION

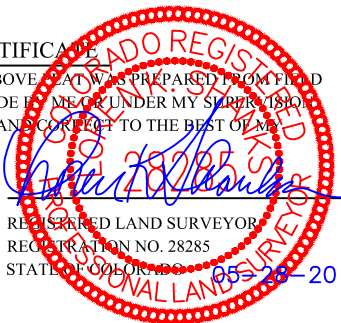
BENCHMARK 374 LOCATED ON THE SECTION LINE BETWEEN SECTIONS 12 & 13, T5S, R64W, 6th. P.M., TAKEN FROM 1988 PUBLISHED DATUM BY THE UNITED STATES DEPARTMENT OF THE INTERIOR, GEOLOGICAL SURVEY AS BEING 6054.61 FEET.



CERTIFICATION

THIS IS TO CERTIFY THAT THE ABOVE PLAT WAS PREPARED FROM PLAT NOTES OF ACTUAL SURVEYS MADE BY ME OR UNDER MY SUPERVISION, AND THAT THE SAME ARE TRUE AND CORRECT TO THE BEST OF MY KNOWLEDGE AND BELIEF.

REGISTERED LAND SURVEYOR  
REGISTRATION NO. 28285  
STATE OF COLORADO



PDOP = 1.6

REV: 4 05-27-20 C.C. (TPZ & BHL MOVE)

NAD 83 (SURFACE LOCATION)	NAD 83 (TOP PRODUCTION ZONE)	NAD 83 (TARGET BOTTOM HOLE)
LATITUDE = 39°40'16.09" (39.671135°)	LATITUDE = 39°40'20.50" (39.672362°)	LATITUDE = 39°40'20.88" (39.672466°)
LONGITUDE = 104°40'37.62" (104.677117°)	LONGITUDE = 104°40'48.83" (104.680231°)	LONGITUDE = 104°42'52.30" (104.714529°)
NAD 27 (SURFACE LOCATION)	NAD 27 (TOP PRODUCTION ZONE)	NAD 27 (TARGET BOTTOM HOLE)
LATITUDE = 39°40'16.13" (39.671148°)	LATITUDE = 39°40'20.55" (39.672375°)	LATITUDE = 39°40'20.92" (39.672478°)
LONGITUDE = 104°40'35.73" (104.676591°)	LONGITUDE = 104°40'46.94" (104.679706°)	LONGITUDE = 104°42'50.41" (104.714002°)
STATE PLANE NAD 83 (CO. CENTRAL)	STATE PLANE NAD 83 (CO. CENTRAL)	STATE PLANE NAD 83 (CO. CENTRAL)
N: 1670388.78' E: 3231637.09'	N: 1670827.94' E: 3230756.35'	N: 1670780.38' E: 3221101.85'
STATE PLANE NAD 27 (CO. CENTRAL)	STATE PLANE NAD 27 (CO. CENTRAL)	STATE PLANE NAD 27 (CO. CENTRAL)
N: 670381.23' E: 2231791.01'	N: 670820.36' E: 2230910.27'	N: 670772.64' E: 2221255.85'



UELS, LLC  
Corporate Office \* 85 South 200 East  
Vernal, UT 84078 \* (435) 789-1017

SURVEYED BY	CHAD MEIERS, O.R.	04-20-18	SCALE
DRAWN BY	K.B.	02-09-17	1" = 1000'

WELL LOCATION PLAT