



# Crestone Peak Resources

Schlumberger

Plan 0

Borehole:	Well:	Field:	Structure:
Original Hole	Rush 4-65 29-30 1AH	CO, Arapahoe County (NAD 83 CZ)	Crestone Peak 28-04S-65W (Rush North Pad)

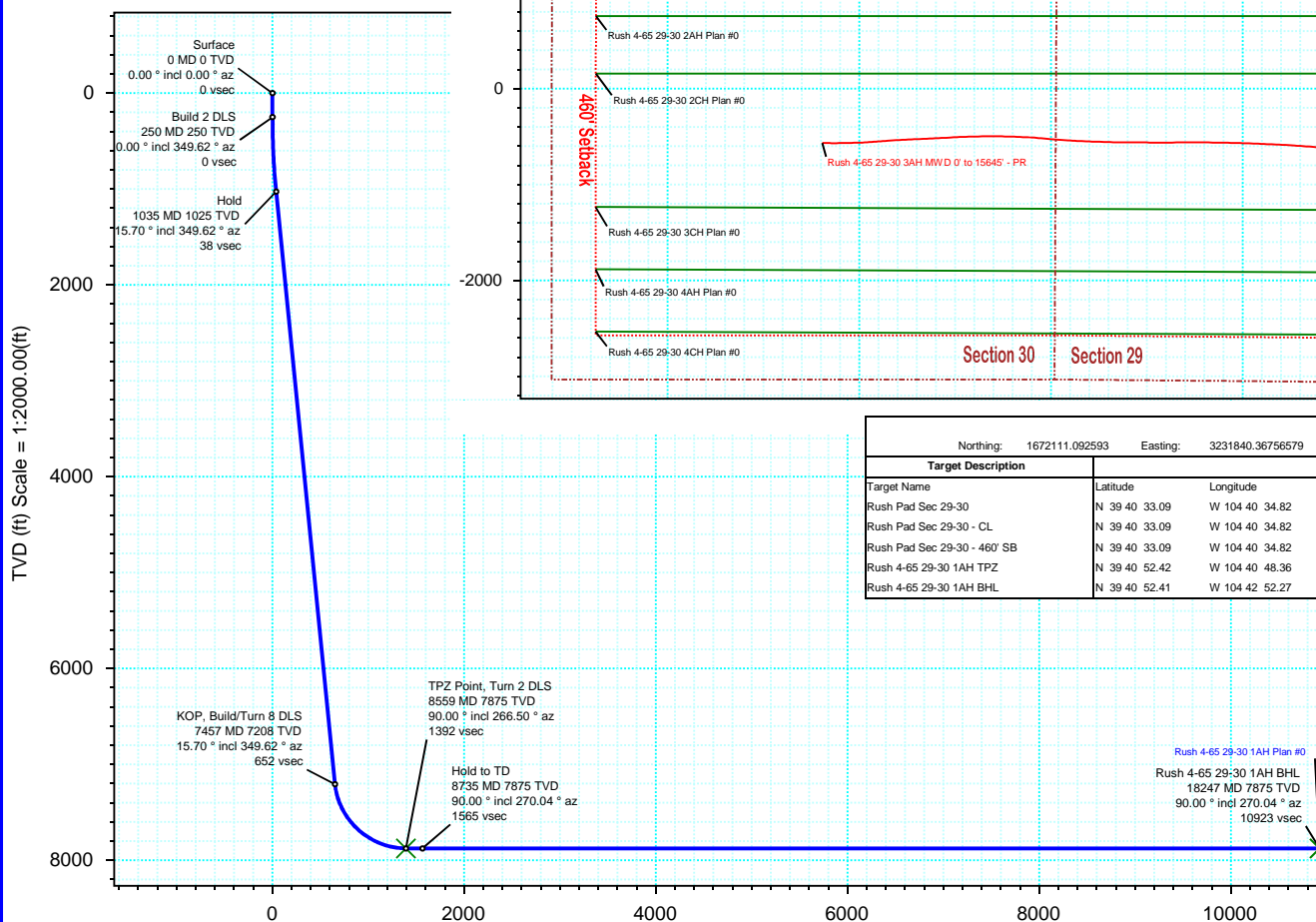
Gravity & Magnetic Parameters					Surface Location				NAD83 Colorado State Plane, Central Zone, US Feet				Miscellaneous			
Model:	HDGM 2020	Dip:	66.345°	Date:	22-Jun-2020	Lat:	N 39 40 33.09	Northings:	1672111.09ftUS	Grid Conv:	0.5195°	Slot:	Rush 4-65 29-30 1AH	TVD Ref:	KB 28ft(5676ft above MSL)	
MagDec:	8.575°	FS:	51550.472nT	Gravity FS:	998.915mgn (9.80665 Based)	Lon:	W 104 40 34.82	Easting:	3231840.37ftUS	Scale Fact:	0.99998617	Plan:	Rush 4-65 29-30 1AH Plan #0			

Proposal

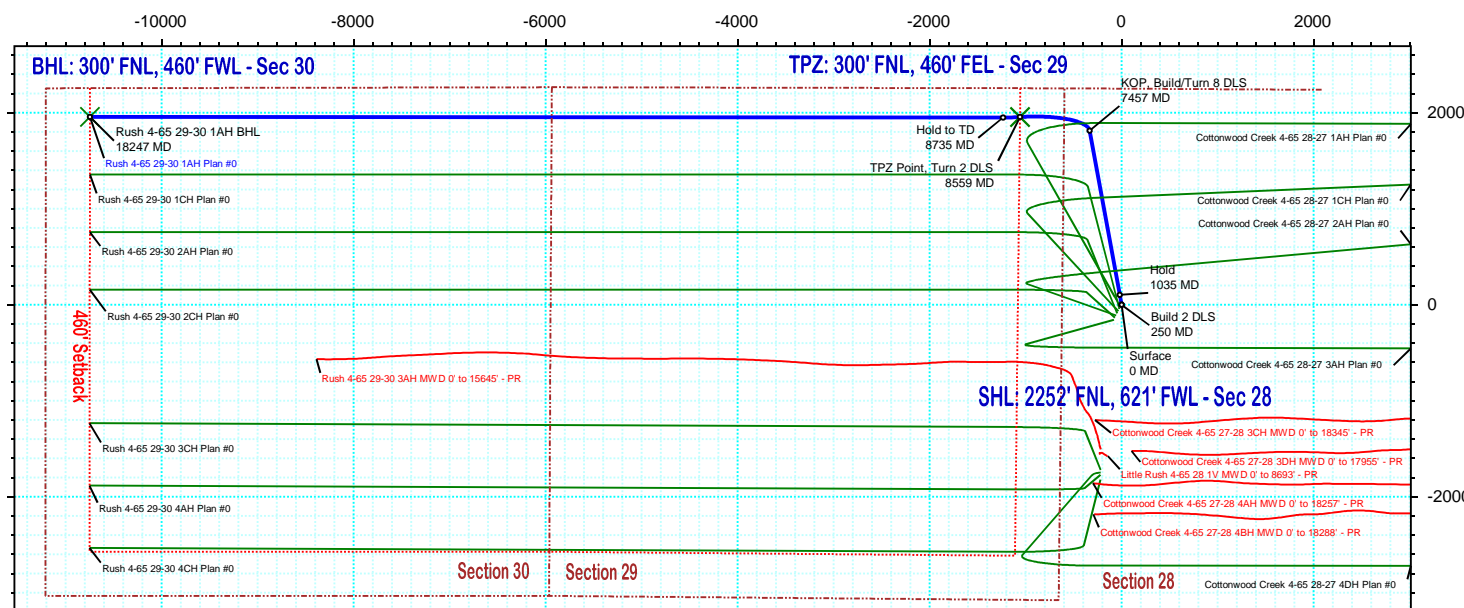
EW (ft) Scale = 1:2000.00(ft)



True North  
Tot Corr (M->T 8.575°)  
Mag Dec (8.575°)  
Grid Conv (0.519°)



Vertical Section (ft) Azim = 280.32° Scale = 1:2000.00(ft) Origin = 0N/-S, 0E/-W



NS (ft) Scale = 1:2000.00(ft)

Target Description		Surface Location						
		Northings:	Easting:	Latitude:	Longitude:	VSec	Azimuth:	280.32
Target Name		Latitude	Longitude	Northings	Easting	TVD	VSec	N(+)/S(-)
Rush Pad Sec 29-30		N 39 40 33.09	W 104 40 34.82	1672111.09	3231840.37	5676.00	0.00	0.00
Rush Pad Sec 29-30 - CL		N 39 40 33.09	W 104 40 34.82	1672111.09	3231840.37	5676.00	0.00	0.00
Rush Pad Sec 29-30 - 460' SB		N 39 40 33.09	W 104 40 34.82	1672111.09	3231840.37	5676.00	0.00	0.00
Rush 4-65 29-30 1AH TPZ		N 39 40 52.42	W 104 40 48.36	1674057.89	3230764.39	7875.00	1391.74	1956.50
Rush 4-65 29-30 1AH BHL		N 39 40 52.41	W 104 42 52.27	1673970.83	3221076.72	7875.00	10923.30	1957.28

Critical Points								
Critical Point	MD	INCL	AZIM	TVD	VSEC	N(+)/S(-)	E(+)/W(-)	DLS
Surface	0.00	0.00	0.00	0.00	0.00	0.00	0.00	
Build 2 DLS	250.00	0.00	349.62	250.00	0.00	0.00	0.00	0.00
Hold	1034.94	15.70	349.62	1025.15	37.78	105.11	-19.26	2.00
KOP, Build/Turn 8 DLS	7456.86	15.70	349.62	7207.53	652.15	1814.30	-332.44	0.00
TPZ Point, Turn 2 DLS	8558.63	90.00	266.50	7875.00	1391.74	1956.50	-1058.30	8.00
Hold to TD	8735.48	90.00	270.04	7875.00	1564.66	1951.16	-1235.03	2.00
Rush 4-65 29-30 1AH BHL	18246.96	90.00	270.04	7875.00	10923.30	1957.28	-10746.51	0.00

## Rush 4-65 29-30 1AH Plan #0 Proposal Geodetic Report

(Def Plan)

<b>Report Date:</b>	June 23, 2020 - 03:07 PM	<b>Survey / DLS Computation:</b>	Minimum Curvature / Lubinski
<b>Client:</b>	Crestone Peak Resources	<b>Vertical Section Azimuth:</b>	280.322 ° (True North)
<b>Field:</b>	CO, Arapahoe County (NAD 83 CZ)	<b>Vertical Section Origin:</b>	0.000 ft, 0.000 ft
<b>Structure / Slot:</b>	Crestone Peak 28-04S-65W (Rush North Pad) / Rush 4-65 29-30 1AH	<b>TVD Reference Datum:</b>	KB 28ft
<b>Well:</b>	Rush 4-65 29-30 1AH	<b>TVD Reference Elevation:</b>	5676.000 ft above MSL
<b>Borehole:</b>	Original Hole	<b>Seabed / Ground Elevation:</b>	5648.000 ft above MSL
<b>UWI / API#:</b>	Unknown / Unknown	<b>Magnetic Declination:</b>	8.575 °
<b>Survey Name:</b>	Rush 4-65 29-30 1AH Plan #0	<b>Total Gravity Field Strength:</b>	998.9150mgn (9.80665 Based)
<b>Survey Date:</b>	June 22, 2020	<b>Gravity Model:</b>	GARM
<b>Tort / AHD / DDI / ERD Ratio:</b>	107.377 ° / 12300.863 ft / 6.486 / 1.562	<b>Total Magnetic Field Strength:</b>	51550.472 nT
<b>Coordinate Reference System:</b>	NAD83 Colorado State Plane, Central Zone, US Feet	<b>Magnetic Dip Angle:</b>	66.345 °
<b>Location Lat / Long:</b>	N 39° 40' 33.08880", W 104° 40' 34.82040"	<b>Declination Date:</b>	June 22, 2020
<b>Location Grid N/E Y/X:</b>	N 1672111.093 ftUS, E 3231840.368 ftUS	<b>Magnetic Declination Model:</b>	HDGM 2020
<b>CRS Grid Convergence Angle:</b>	0.5195 °	<b>North Reference:</b>	True North
<b>Grid Scale Factor:</b>	0.99998617	<b>Grid Convergence Used:</b>	0.0000 °
<b>Version / Patch:</b>	2.10.810.1	<b>Total Corr Mag North-&gt;True North:</b>	8.5747 °
		<b>Local Coord Referenced To:</b>	Well Head

Comments	MD (ft)	Incl (°)	Azim True (°)	TVD (ft)	VSEC (ft)	NS (ft)	EW (ft)	DLS (°/100ft)	Northing (ftUS)	Easting (ftUS)	Latitude (°)	Longitude (°)
Surface	0.00	0.00	0.00	0.00	0.00	0.00	0.00	N/A	1672111.09	3231840.37	39.675858	-104.676339
Build 2 DLS	100.00	0.00	349.62	100.00	0.00	0.00	0.00	0.00	1672111.09	3231840.37	39.675858	-104.676339
	200.00	0.00	349.62	200.00	0.00	0.00	0.00	0.00	1672111.09	3231840.37	39.675858	-104.676339
	250.00	0.00	349.62	250.00	0.00	0.00	0.00	0.00	1672111.09	3231840.37	39.675858	-104.676339
	300.00	1.00	349.62	300.00	0.15	0.43	-0.08	2.00	1672111.52	3231840.29	39.675859	-104.676339
	400.00	3.00	349.62	399.93	1.39	3.86	-0.71	2.00	1672114.95	3231839.62	39.675869	-104.676342
	500.00	5.00	349.62	499.68	3.85	10.72	-1.96	2.00	1672121.80	3231838.31	39.675887	-104.676346
	600.00	7.00	349.62	599.13	7.55	21.00	-3.85	2.00	1672132.06	3231836.33	39.675916	-104.676353
	700.00	9.00	349.62	698.15	12.47	34.69	-6.36	2.00	1672145.73	3231833.70	39.675953	-104.676362
	800.00	11.00	349.62	796.63	18.61	51.77	-9.49	2.00	1672162.78	3231830.41	39.676000	-104.676373
	900.00	13.00	349.62	894.44	25.96	72.22	-13.23	2.00	1672183.19	3231826.48	39.676056	-104.676386
Hold	1000.00	15.00	349.62	991.46	34.51	96.02	-17.59	2.00	1672206.94	3231821.90	39.676122	-104.676402
	1034.94	15.70	349.62	1025.15	37.78	105.11	-19.26	2.00	1672216.03	3231820.16	39.676147	-104.676407
	1100.00	15.70	349.62	1087.79	44.01	122.43	-22.43	0.00	1672233.31	3231816.83	39.676194	-104.676419
	1200.00	15.70	349.62	1184.06	53.57	149.04	-27.31	0.00	1672259.88	3231811.71	39.676267	-104.676436
	1300.00	15.70	349.62	1280.33	63.14	175.66	-32.19	0.00	1672286.45	3231806.59	39.676340	-104.676453
	1400.00	15.70	349.62	1376.60	72.71	202.27	-37.06	0.00	1672313.02	3231801.47	39.676413	-104.676471
	1500.00	15.70	349.62	1472.87	82.27	228.89	-41.94	0.00	1672339.59	3231796.35	39.676486	-104.676488
	1600.00	15.70	349.62	1569.14	91.84	255.50	-46.82	0.00	1672366.16	3231791.24	39.676559	-104.676505
	1700.00	15.70	349.62	1665.41	101.41	282.12	-51.69	0.00	1672392.73	3231786.12	39.676632	-104.676523
	1800.00	15.70	349.62	1761.68	110.98	308.73	-56.57	0.00	1672419.30	3231781.00	39.676706	-104.676540
	1900.00	15.70	349.62	1857.95	120.54	335.35	-61.45	0.00	1672445.86	3231775.88	39.676779	-104.676557
	2000.00	15.70	349.62	1954.22	130.11	361.96	-66.32	0.00	1672472.43	3231770.77	39.676852	-104.676575
	2100.00	15.70	349.62	2050.49	139.68	388.58	-71.20	0.00	1672499.00	3231765.65	39.676925	-104.676592
	2200.00	15.70	349.62	2146.76	149.24	415.19	-76.08	0.00	1672525.57	3231760.53	39.676998	-104.676609
	2300.00	15.70	349.62	2243.03	158.81	441.81	-80.95	0.00	1672552.14	3231755.41	39.677071	-104.676627
	2400.00	15.70	349.62	2339.30	168.38	468.42	-85.83	0.00	1672578.71	3231750.29	39.677144	-104.676644
	2500.00	15.70	349.62	2435.57	177.94	495.04	-90.71	0.00	1672605.28	3231745.18	39.677217	-104.676661
	2600.00	15.70	349.62	2531.84	187.51	521.65	-95.58	0.00	1672631.85	3231740.06	39.677290	-104.676679
	2700.00	15.70	349.62	2628.10	197.08	548.27	-100.46	0.00	1672658.42	3231734.94	39.677363	-104.676696
	2800.00	15.70	349.62	2724.37	206.64	574.88	-105.34	0.00	1672684.99	3231729.82	39.677436	-104.676713
	2900.00	15.70	349.62	2820.64	216.21	601.50	-110.22	0.00	1672711.56	3231724.71	39.677509	-104.676731
	3000.00	15.70	349.62	2916.91	225.78	628.11	-115.09	0.00	1672738.12	3231719.59	39.677582	-104.676748
	3100.00	15.70	349.62	3013.18	235.34	654.73	-119.97	0.00	1672764.69	3231714.47	39.677655	-104.676765
	3200.00	15.70	349.62	3109.45	244.91	681.34	-124.85	0.00	1672791.26	3231709.35	39.677728	-104.676783
	3300.00	15.70	349.62	3205.72	254.48	707.96	-129.72	0.00	1672817.83	3231704.23	39.677802	-104.676800
	3400.00	15.70	349.62	3301.99	264.04	734.57	-134.60	0.00	1672844.40	3231699.12	39.677875	-104.676817
	3500.00	15.70	349.62	3398.26	273.61	761.18	-139.48	0.00	1672870.97	3231694.00	39.677948	-104.676835
	3600.00	15.70	349.62	3494.53	283.18	787.80	-144.35	0.00	1672897.54	3231688.88	39.678021	-104.676852
	3700.00	15.70	349.62	3590.80	292.74	814.41	-149.23	0.00	1672924.11	3231683.76	39.678094	-104.676869
	3800.00	15.70	349.62	3687.07	302.31	841.03	-154.11	0.00	1672950.68	3231678.65	39.678167	-104.676886
	3900.00	15.70	349.62	3783.34	311.88	867.64	-158.98	0.00	1672977.25	3231673.53	39.678240	-104.676904
	4000.00	15.70	349.62	3879.61	321.44	894.26	-163.86	0.00	1673003.81	3231668.41	39.678313	-104.676921
	4100.00	15.70	349.62	3975.88	331.01	920.87	-168.74	0.00	1673030.38	3231663.29	39.678386	-104.676938
	4200.00	15.70	349.62	4072.15	340.58	947.49	-173.61	0.00	1673056.95	3231658.17	39.678459	-104.676955
	4300.00	15.70	349.62	4168.42	350.14	974.10	-178.49	0.00	1673083.52	3231653.06	39.678532	-104.676973
	4400.00	15.70	349.62	4264.69	359.71	1000.72	-183.37	0.00	1673110.09	3231647.94	39.678605	-104.676990
	4500.00	15.70	349.62	4360.96	369.28	1027.33	-188.24	0.00	1673136.66	3231642.82	39.678678	-104.677008
	4600.00	15.70	349.62	4457.23	378.84	1053.95	-193.12	0.00	1673163.23	3231637.70	39.678751	-104.677025
	4700.00	15.70	349.62	4553.50	388.41	1080.56	-198.00	0.00	1673189.80	3231632.59	39.678824	-104.677042
	4800.00	15.70	349.62	4649.77	397.98	1107.18	-202.87	0.00	1673216.37	3231627.47	39.678897	-104.677060
	4900.00	15.70	349.62	4746.04	407.55	1133.79	-207.75	0.00	1673242.94	3231622.35	39.678971	-104.677077
	5000.00	15.70	349.62	4842.31	417.11	1160.41	-212.63	0.00	1673269.51	3231617.23	39.679044	-104.677094
	5100.00	15.70	349.62	4938.58	426.68	1187.02	-217.50	0.00	1673296.07	3231612.11	39.679117	-104.677112
	5200.00	15.70	349.62	5034.85	436.25	1213.64	-222.38	0.00	1673322.64	3231607.00	39.679190	-104.677129
	5300.00	15.70	349.62	5131.12	445.81	1240.25	-227.26	0.00	1673349.21	3231601.88	39.679263	-104.677146
	5400.00	15.70	349.62	5227.39	455.38	1266.87	-232.13	0.00	1673375.78	3231596.76	39.679336	-104.677164
	5500.00	15.70	349.62	5323.66	464.95	1293.48	-237.01	0.00	1673402.35	3231591.64	39.679409	-104.677181
	5600.00	15.70	349.62	5419.93	474.51	1320.10	-241.89	0.00	1673428.92	3231586.53	39.679482	-104.677198
	5700.00	15.70	349.62	5516.20	484.08	1346.71	-246.76	0.00	1673455.49	3231581.41	39.679555	-104.677216
	5800.00	15.70	349.62	5612.47	493.65	1373.33	-251.64	0.00	1673482.06	3231576.29	39.679628	-104.677233
	5900.00	15.70	349.62	5708.74	503.21	1399.94	-256.52	0.00	1673508.63	3231571.17	39.679701	-104.677250
	6000.00	15.70	349.62	5805.01	512.78	1426.55	-261.39	0.00	1673535.20	3231566.05	39.679774	-104.677268
	6100.00	15.70	349.62	5901.28	522.35	1453.17	-266.27	0.00	1673561.77	3231560.94	39.679847	-104.677285
	6200.00	15.70	349.62	5997.55	531.91	1479.78	-271.15	0.00	1673588.33	3231555.82	39.679920	-104.677302
	6300.00	15.70	349.62	6093.82	541.48	1506.40	-276.02	0.00	1673614.90	3231550.70	39.679993	-104.677320
	6400.00	15.70	349.62	6190.09	551.05	1533.01	-280.90	0.00	1673641.47	3231545.58	39.680066	-104.677337
	6500.00	15.70	349.62	6286.36	560.61	1559.63	-285.78	0.00	1673668.04	3231540.47	39.680140	-104.677354
	6600.00	15.70	349.62	6382.63	570.18	1586.24	-290.66	0.00	1673694.61	3231535.35	39.680213	-104.677372
6700.00	15.70	349.62	6478.90	579.75	1612.86	-295.53	0.00	1673721.18	3231530.23	39.680286	-104.677389	
6800.00	15.70	349.62	6575.17	589.31	1639.47	-300.41	0.00	1673747.75	3231525.11	39.680359	-104.677406	
6900.00	15.70	349.62	6671.44	598.88	1666.09	-305.29	0.00	1673774.32	3231519.99	39.680432	-104.677424	
7000.00	15.70	349.62	6767.71	608.45	1692.70	-310.16	0.00	1673800.89	3231514.88	39.680505	-104.677441	
7100.00	15.70	349.62	6863.98	618.01	1719.32	-315.04	0.00	1673827.46	3231509.76	39.680578	-104.677458	
7200.00	15.70	349.62	6960.24	627.58	1745.93	-319.92	0.00	1673854.02	3231504.64	39.680651	-104.677476	
7300.00	15.70	349.62	7056.51	637.15	1772.55	-324.79	0.00	1673880.59	3231499.52	39.680724	-104.677493	
7400.00	15.70	349.62	7152.78	646.71	1799.16	-329.67	0.00	1673907.16	3231494.41	39.680797	-104.677510	

Comments	MD (ft)	Incl (°)	Azim True (°)	TVD (ft)	VSEC (ft)	NS (ft)	EW (ft)	DLS (°/100ft)	Northing (ftUS)	Easting (ftUS)	Latitude (°)	Longitude (°)
KOP_Build/Turn 8 DLS	7456.86	15.70	349.62	7207.53	652.15	1814.30	-332.44	0.00	1673922.27	3231491.50	39.680839	-104.677520
	7500.00	16.45	337.43	7248.99	657.54	1825.68	-335.84	8.00	1673933.62	3231487.99	39.680870	-104.677532
	7600.00	20.39	315.15	7343.96	679.56	1851.14	-353.59	8.00	1673958.93	3231470.01	39.680940	-104.677595
	7700.00	26.19	301.07	7435.85	714.56	1874.92	-384.83	8.00	1673982.42	3231438.56	39.681005	-104.677706
	7800.00	32.87	292.08	7522.85	761.84	1896.55	-428.95	8.00	1674003.64	3231394.25	39.681064	-104.677863
	7900.00	39.99	285.93	7603.28	820.48	1915.60	-485.09	8.00	1674022.18	3231337.94	39.681117	-104.678062
	8000.00	47.36	281.39	7675.58	889.35	1931.70	-552.15	8.00	1674037.68	3231270.73	39.681161	-104.678301
	8100.00	54.86	277.82	7738.32	967.10	1944.56	-628.84	8.00	1674049.84	3231193.93	39.681196	-104.678573
	8200.00	62.46	274.87	7790.30	1052.22	1953.90	-713.66	8.00	1674058.41	3231109.03	39.681222	-104.678875
	8300.00	70.10	272.30	7830.51	1143.06	1959.55	-804.96	8.00	1674063.24	3231017.68	39.681237	-104.679199
	8400.00	77.78	269.96	7858.15	1237.84	1961.41	-900.96	8.00	1674064.22	3230921.67	39.681243	-104.679540
	8500.00	85.48	267.76	7872.69	1334.72	1959.43	-999.80	8.00	1674061.35	3230822.86	39.681237	-104.679891
TPZ Point, Turn 2 DLS	8558.63	90.00	266.50	7875.00	1391.74	1956.50	-1058.30	8.00	1674057.89	3230764.39	39.681229	-104.680099
Hold to TD	8600.00	90.00	267.33	7875.00	1431.98	1954.27	-1099.60	2.00	1674055.28	3230723.11	39.681223	-104.680246
	8700.00	90.00	269.33	7875.00	1529.79	1951.35	-1199.56	2.00	1674051.46	3230623.19	39.681215	-104.680601
	8735.48	90.00	270.04	7875.00	1564.66	1951.16	-1235.03	2.00	1674050.94	3230587.71	39.681214	-104.680727
	8800.00	90.00	270.04	7875.00	1628.15	1951.20	-1299.56	0.00	1674050.40	3230523.20	39.681214	-104.680956
	8900.00	90.00	270.04	7875.00	1726.54	1951.26	-1399.56	0.00	1674049.55	3230423.20	39.681215	-104.681311
	9000.00	90.00	270.04	7875.00	1824.93	1951.33	-1499.56	0.00	1674048.71	3230323.21	39.681215	-104.681667
	9100.00	90.00	270.04	7875.00	1923.33	1951.39	-1599.56	0.00	1674047.87	3230223.21	39.681215	-104.682022
	9200.00	90.00	270.04	7875.00	2021.72	1951.45	-1699.56	0.00	1674047.03	3230123.22	39.681215	-104.682377
	9300.00	90.00	270.04	7875.00	2120.11	1951.52	-1799.56	0.00	1674046.19	3230023.22	39.681215	-104.682733
	9400.00	90.00	270.04	7875.00	2218.50	1951.58	-1899.56	0.00	1674045.34	3229923.23	39.681215	-104.683088
	9500.00	90.00	270.04	7875.00	2316.90	1951.65	-1999.56	0.00	1674044.50	3229823.23	39.681216	-104.683443
	9600.00	90.00	270.04	7875.00	2415.29	1951.71	-2099.56	0.00	1674043.66	3229723.24	39.681216	-104.683798
	9700.00	90.00	270.04	7875.00	2513.68	1951.78	-2199.56	0.00	1674042.82	3229623.24	39.681216	-104.684154
	9800.00	90.00	270.04	7875.00	2612.08	1951.84	-2299.56	0.00	1674041.97	3229523.25	39.681216	-104.684509
	9900.00	90.00	270.04	7875.00	2710.47	1951.91	-2399.56	0.00	1674041.13	3229423.25	39.681216	-104.684864
	10000.00	90.00	270.04	7875.00	2808.86	1951.97	-2499.56	0.00	1674040.29	3229323.26	39.681216	-104.685220
	10100.00	90.00	270.04	7875.00	2907.26	1952.03	-2599.56	0.00	1674039.45	3229223.26	39.681216	-104.685575
	10200.00	90.00	270.04	7875.00	3005.65	1952.10	-2699.56	0.00	1674038.61	3229123.27	39.681217	-104.685930
	10300.00	90.00	270.04	7875.00	3104.04	1952.16	-2799.56	0.00	1674037.76	3229023.27	39.681217	-104.686285
	10400.00	90.00	270.04	7875.00	3202.44	1952.23	-2899.56	0.00	1674036.92	3228923.28	39.681217	-104.686641
	10500.00	90.00	270.04	7875.00	3300.83	1952.29	-2999.56	0.00	1674036.08	3228823.28	39.681217	-104.686996
	10600.00	90.00	270.04	7875.00	3399.22	1952.36	-3099.56	0.00	1674035.24	3228723.29	39.681217	-104.687351
	10700.00	90.00	270.04	7875.00	3497.61	1952.42	-3199.56	0.00	1674034.39	3228623.29	39.681217	-104.687707
	10800.00	90.00	270.04	7875.00	3596.01	1952.48	-3299.56	0.00	1674033.55	3228523.30	39.681217	-104.688062
	10900.00	90.00	270.04	7875.00	3694.40	1952.55	-3399.56	0.00	1674032.71	3228423.30	39.681218	-104.688417
	11000.00	90.00	270.04	7875.00	3792.79	1952.61	-3499.56	0.00	1674031.87	3228323.31	39.681218	-104.688772
	11100.00	90.00	270.04	7875.00	3891.19	1952.68	-3599.56	0.00	1674031.02	3228223.31	39.681218	-104.689128
	11200.00	90.00	270.04	7875.00	3989.58	1952.74	-3699.56	0.00	1674030.18	3228123.32	39.681218	-104.689483
	11300.00	90.00	270.04	7875.00	4087.97	1952.81	-3799.56	0.00	1674029.34	3228023.32	39.681218	-104.689838
	11400.00	90.00	270.04	7875.00	4186.37	1952.87	-3899.56	0.00	1674028.50	3227923.33	39.681218	-104.690194
	11500.00	90.00	270.04	7875.00	4284.76	1952.94	-3999.56	0.00	1674027.66	3227823.33	39.681218	-104.690549
	11600.00	90.00	270.04	7875.00	4383.15	1953.00	-4099.56	0.00	1674026.81	3227723.34	39.681219	-104.690904
	11700.00	90.00	270.04	7875.00	4481.55	1953.06	-4199.56	0.00	1674025.97	3227623.34	39.681219	-104.691259
	11800.00	90.00	270.04	7875.00	4579.94	1953.13	-4299.56	0.00	1674025.13	3227523.35	39.681219	-104.691615
	11900.00	90.00	270.04	7875.00	4678.33	1953.19	-4399.56	0.00	1674024.29	3227423.36	39.681219	-104.691970
	12000.00	90.00	270.04	7875.00	4776.72	1953.26	-4499.56	0.00	1674023.44	3227323.36	39.681219	-104.692325
	12100.00	90.00	270.04	7875.00	4875.12	1953.32	-4599.56	0.00	1674022.60	3227223.37	39.681219	-104.692681
	12200.00	90.00	270.04	7875.00	4973.51	1953.39	-4699.56	0.00	1674021.76	3227123.37	39.681219	-104.693036
	12300.00	90.00	270.04	7875.00	5071.90	1953.45	-4799.56	0.00	1674020.92	3227023.38	39.681219	-104.693391
	12400.00	90.00	270.04	7875.00	5170.30	1953.51	-4899.56	0.00	1674020.08	3226923.38	39.681220	-104.693747
	12500.00	90.00	270.04	7875.00	5268.69	1953.58	-4999.56	0.00	1674019.23	3226823.39	39.681220	-104.694102
	12600.00	90.00	270.04	7875.00	5367.08	1953.64	-5099.56	0.00	1674018.39	3226723.39	39.681220	-104.694457
	12700.00	90.00	270.04	7875.00	5465.48	1953.71	-5199.56	0.00	1674017.55	3226623.40	39.681220	-104.694812
	12800.00	90.00	270.04	7875.00	5563.87	1953.77	-5299.56	0.00	1674016.71	3226523.40	39.681220	-104.695168
	12900.00	90.00	270.04	7875.00	5662.26	1953.84	-5399.56	0.00	1674015.86	3226423.41	39.681220	-104.695523
	13000.00	90.00	270.04	7875.00	5760.66	1953.90	-5499.56	0.00	1674015.02	3226323.41	39.681220	-104.695878
	13100.00	90.00	270.04	7875.00	5859.05	1953.97	-5599.56	0.00	1674014.18	3226223.42	39.681220	-104.696234
	13200.00	90.00	270.04	7875.00	5957.44	1954.03	-5699.56	0.00	1674013.34	3226123.42	39.681221	-104.696589
	13300.00	90.00	270.04	7875.00	6055.83	1954.09	-5799.56	0.00	1674012.49	3226023.43	39.681221	-104.696944
	13400.00	90.00	270.04	7875.00	6154.23	1954.16	-5899.56	0.00	1674011.65	3225923.43	39.681221	-104.697299
	13500.00	90.00	270.04	7875.00	6252.62	1954.22	-5999.56	0.00	1674010.81	3225823.44	39.681221	-104.697655
	13600.00	90.00	270.04	7875.00	6351.01	1954.29	-6099.56	0.00	1674009.97	3225723.44	39.681221	-104.698010
	13700.00	90.00	270.04	7875.00	6449.41	1954.35	-6199.56	0.00	1674009.13	3225623.45	39.681221	-104.698365
	13800.00	90.00	270.04	7875.00	6547.80	1954.42	-6299.56	0.00	1674008.28	3225523.45	39.681221	-104.698721
	13900.00	90.00	270.04	7875.00	6646.19	1954.48	-6399.56	0.00	1674007.44	3225423.46	39.681221	-104.699076
	14000.00	90.00	270.04	7875.00	6744.59	1954.54	-6499.56	0.00	1674006.60	3225323.46	39.681221	-104.699431
	14100.00	90.00	270.04	7875.00	6842.98	1954.61	-6599.56	0.00	1674005.76	3225223.47	39.681222	-104.699786
	14200.00	90.00	270.04	7875.00	6941.37	1954.67	-6699.56	0.00	1674004.91	3225123.47	39.681222	-104.700142
	14300.00	90.00	270.04	7875.00	7039.77	1954.74	-6799.56	0.00	1674004.07	3225023.48	39.681222	-104.700497
	14400.00	90.00	270.04	7875.00	7138.16	1954.80	-6899.56	0.00	1674003.23	3224923.48	39.681222	-104.700852
	14500.00	90.00	270.04	7875.00	7236.55	1954.87	-6999.56	0.00	1674002.39	3224823.49	39.681222	-104.701208
	14600.00	90.00	270.04	7875.00	7334.94	1954.93	-7099.56	0.00	1674001.55	3224723.49	39.681222	-104.701563
	14700.00	90.00	270.04	7875.00	7433.34	1955.00	-7199.56	0.00	1674000.70	3224623.50	39.681222	-104.701918
	14800.00	90.00	270.04									

Comments	MD (ft)	Incl (°)	Azim True (°)	TVD (ft)	VSEC (ft)	NS (ft)	EW (ft)	DLS (°/100ft)	Northing (ftUS)	Easting (ftUS)	Latitude (°)	Longitude (°)
	17800.00	90.00	270.04	7875.00	10483.52	1956.99	-10299.55	0.00	1673974.59	3221523.66	39.681225	-104.712932
	17900.00	90.00	270.04	7875.00	10581.92	1957.05	-10399.55	0.00	1673973.75	3221423.66	39.681225	-104.713287
	18000.00	90.00	270.04	7875.00	10680.31	1957.12	-10499.55	0.00	1673972.91	3221323.67	39.681225	-104.713643
	18100.00	90.00	270.04	7875.00	10778.70	1957.18	-10599.55	0.00	1673972.07	3221223.67	39.681225	-104.713998
	18200.00	90.00	270.04	7875.00	10877.09	1957.25	-10699.55	0.00	1673971.22	3221123.68	39.681225	-104.714353
Rush 4-65 29-30 1AH BHL	18246.96	90.00	270.04	7875.00	10923.30	1957.28	-10746.51	0.00	1673970.83	3221076.72	39.681225	-104.714520

Survey Type: Def Plan

Survey Error Model: ISCWSA Rev 0 \*\*\* 3-D 95.000% Confidence 2.7955 sigma  
Survey Program:

Description	Part	MD From (ft)	MD To (ft)	EOU Freq (ft)	Hole Size	Casing Diameter (in)	Expected Max Inclination (deg)	Survey Tool Type	Borehole / Survey
	1	0.000	28.000	1/100.000	13.500	9.625		NAL_MWD_PLUS_0.5_DEG- Depth Only	Original Hole / Rush 4-65 29-30 1AH Plan #0
	1	28.000	2000.000	1/100.000	13.500	9.625		NAL_MWD_PLUS_0.5_DEG	Original Hole / Rush 4-65 29-30 1AH Plan #0
	1	2000.000	18246.957	1/100.000	8.500	5.500		NAL_MWD_PLUS_0.5_DEG	Original Hole / Rush 4-65 29-30 1AH Plan #0