



August 15, 2019

VIA ELECTRONIC TRANSMITTAL

Oil and Gas Conservation Commission
1120 Lincoln St., Suite 801
Denver, CO 80203

Re: **30-Day Certification Letter – Rule 318A.e**

Onion 1918-01H located 1665' FSL & 1635' FWL (SHL) Weld County

Dear COGCC Director,

Verdad Resources LLC (Verdad) hereby certifies to the Director that a thirty (30-day) notice has been given by certified mail to all owners in the proposed the 640 acres comprised of Section 12: SE4SE4, Section 13: E2E2, Section 24 E2NE4 & NE4SE4 of T1N-R65W, Section 7: SW4SW4, Section 18 W2W2, and Section 19 W2NW4 & NW4SW4 of T1N-R64W.

We have not received any objections to such well location or proposed spacing unit, therefore Verdad hereby requests the Director to approve the proposed wells.

If you should have any questions or concerns regarding this permit, please contact the undersigned at 720-845-6909.

Sincerely,

Allison Schieber
Sr Regulatory Analyst
Verdad Oil and Gas Corporation

SCALE: 1" = 2000'
0' 1000' 2000'

WELLBORE SPACING UNIT WELD COUNTY, COLORADO



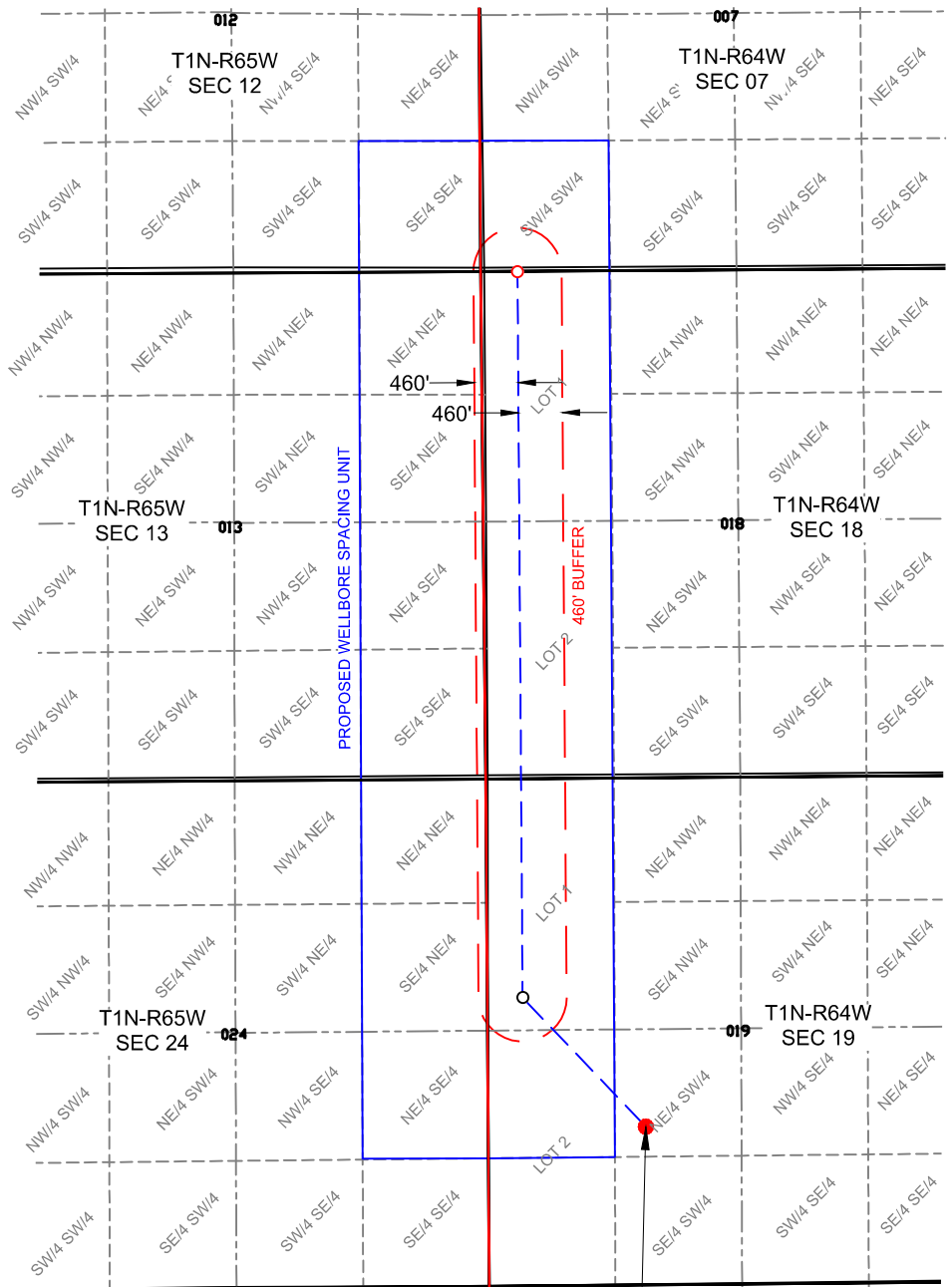
SURFACE LOCATION
GROUND ELEV = 5013'
LAT.: N 40.0341259
LONG.: W 104.5969771
1665' FSL & 1635' FWL
NE/4 SW/4, SEC 19, T1N-R64W

LANDING POINT
LAT.: N 40.0378684
LONG.: W 104.6015299
2280' FNL & 354' FWL
LOT 1, SEC 19, T1N-R64W

BOTTOM HOLE LOCATION
LAT.: N 40.0586871
LONG.: W 104.6014469
0' FNL & 354' FWL
LOT 1, SEC 18, T1N-R64W

LEGEND

- WELL BORE
- 460' BUFFER
- WELL BORE SPACING UNIT
- SURFACE HOLE LOCATION
- LANDING POINT
- BOTTOM HOLE LOCATION



NOTES

- Horizontal (NAD 83) and vertical (NAVD 88) datum is based on the Trimble VRS Network or OPUS Solution.
- See Form 2A, if applicable for visible improvements within 500' of wellhead.
- Distances to nearest section lines are measured perpendicularly.
- This is not a land survey nor land survey plat.

PDOP Reading: 1.2 Instrument Operator: **Ross Carter**
Date Surveyed: **04/04/2019**

SURVEYOR'S STATEMENT

The undersigned hereby states that the well location shown hereon was staked on the ground based on existing monumentation and/or physical evidence found in the field and is correct to the best of my knowledge, information and belief.



VERDAD RESOURCES
ONION 1918-01H
JOB NO. 125258

JLS	06/03/19
SHEET :	1 OF 1
FILE:	CD_WELLBORE_SPACING_ONION_1918_1H

REVISION: