

Inspection Photos

7/8/2020

Operator: CAERUS PICEANCE LLC - 10456

Location ID: 312661

Mesa County, CO

Aaron Trujillo

NW Reclamation Specialist

COGCC

Inspection Photos
Operator Name: CAERUS PICEANCE LLC - 10456
Location ID: 312661



Photo 1: Photo taken from the north end of the Location facing southeast. Reclamation activities appear to have been conducted. Operator appears to utilized a hydromulch, or tackifier to stabilize the reclamation area. 2 spring growing seasons have passed since reclamation was required pursuant to 1004.a; Little to no desirable vegetative germination was observed. Additional seeding may be needed to facilitate reclamation.



Photo 2: Photo taken from the north end of the Location facing southwest. See comments under photo 1.

Inspection Photos

Operator Name: CAERUS PICEANCE LLC - 10456

Location ID: 312661



Photo 3: Photo of the Locations surface. Photo shows hydromulch has been implemented to stabilize soil surface. Photo also shows little to no desirable vegetative germination was observed. Vegetation observed in photo Cheatgrass. Additional seeding may be needed to facilitate reclamation.



Photo 4: Photo shows Operator has implemented straw wattles along perimeter of the Location in conjunction with hydromulch.

Inspection Photos
Operator Name: CAERUS PICEANCE LLC - 10456
Location ID: 312661



Photo 5: Photo taken from the access road, north of the Location facing southwest. Photo shows access road has not been reclaimed.



Photo 6: Photo taken from the access road entrance facing south. Photo shows access road to the Location has not been reclaimed.

Inspection Photos
Operator Name: CAERUS PICEANCE LLC - 10456
Location ID: 312661



Photo 7: 1993 Google Earth aerial image. Well SPUD 1998. Photo shows Oil and gas access road did no pre-exist Oil and Gas Location; Access road subject to COGCC 1004 requirements. Red line in photo to right represent access road that was constructed (see photo 8).

Inspection Photos
Operator Name: CAERUS PICEANCE LLC - 10456
Location ID: 312661

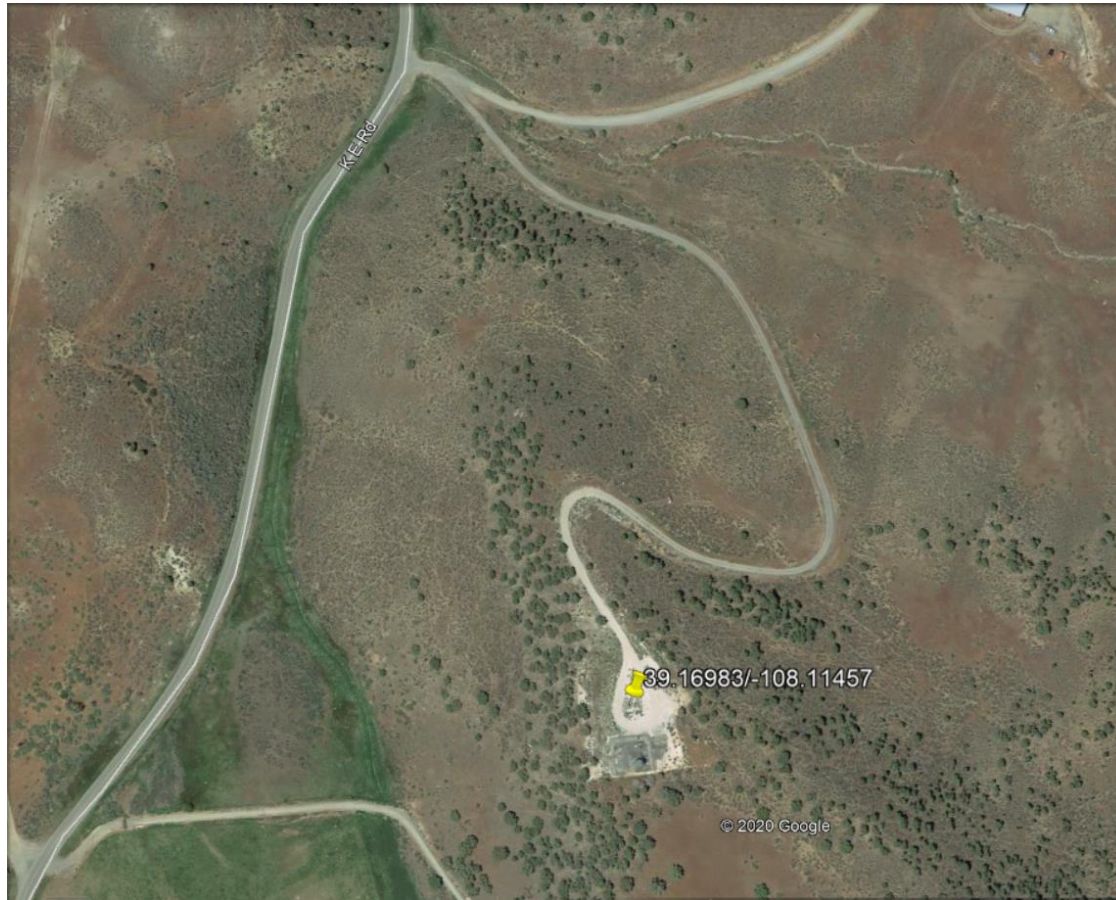


Photo 8: Google earth aerial image showing Oil and Gas Location and Access road.

