

Burlington Resources Oil & Gas LP, Eastern Hills 4-65 17-18 2DH

005-07263

Inspection #688308162

7/9/2020

Routine Inspection



Colorado Oil and Gas Conservation Commission  
39.70419, -104.67943, 5551.2ft, 221°  
07/09/2020 01:24:05 PM



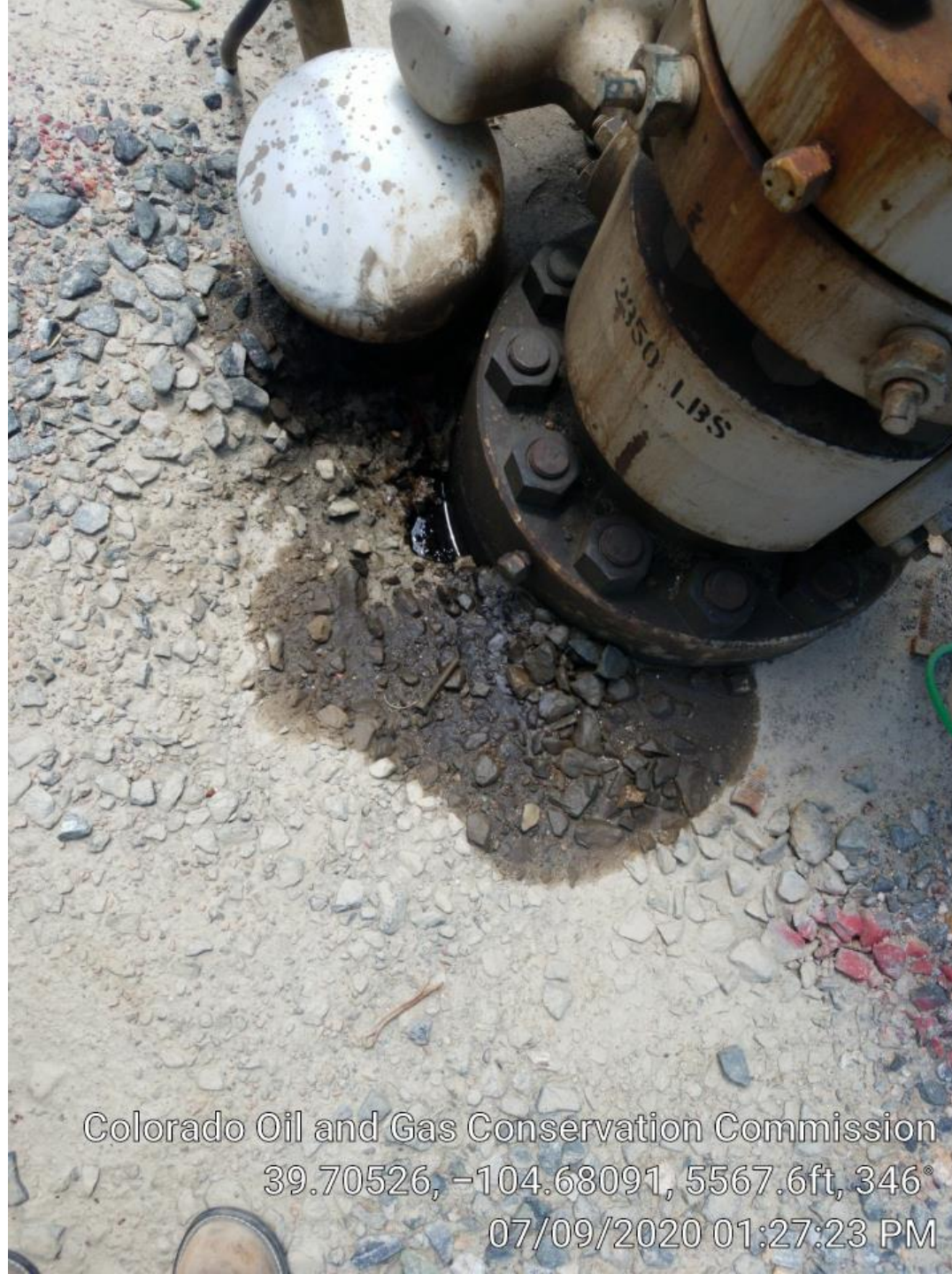
Colorado Oil and Gas Conservation Commission  
39.70526, -104.6809, 5567.6ft, 304°  
07/09/2020 01:26:23 PM



Colorado Oil and Gas Conservation Commission  
39.70519, -104.6808, 5580.7ft, 318°  
07/09/2020 01:26:44 PM



Colorado Oil and Gas Conservation Commission  
39.70525, -104.6809, 5567.6ft, 357°  
07/09/2020 01:26:28 PM



Free fluids at  
wellhead and  
staining.

Colorado Oil and Gas Conservation Commission  
39.70526, -104.68091, 5567.6ft, 346°  
07/09/2020 01:27:23 PM



Bradenhead gauge  
at wellhead -4 psi.

Colorado Oil and Gas Conservation Commission  
39.70526, -104.68095, 5574.1ft, 331°  
07/09/2020 01:27:33 PM



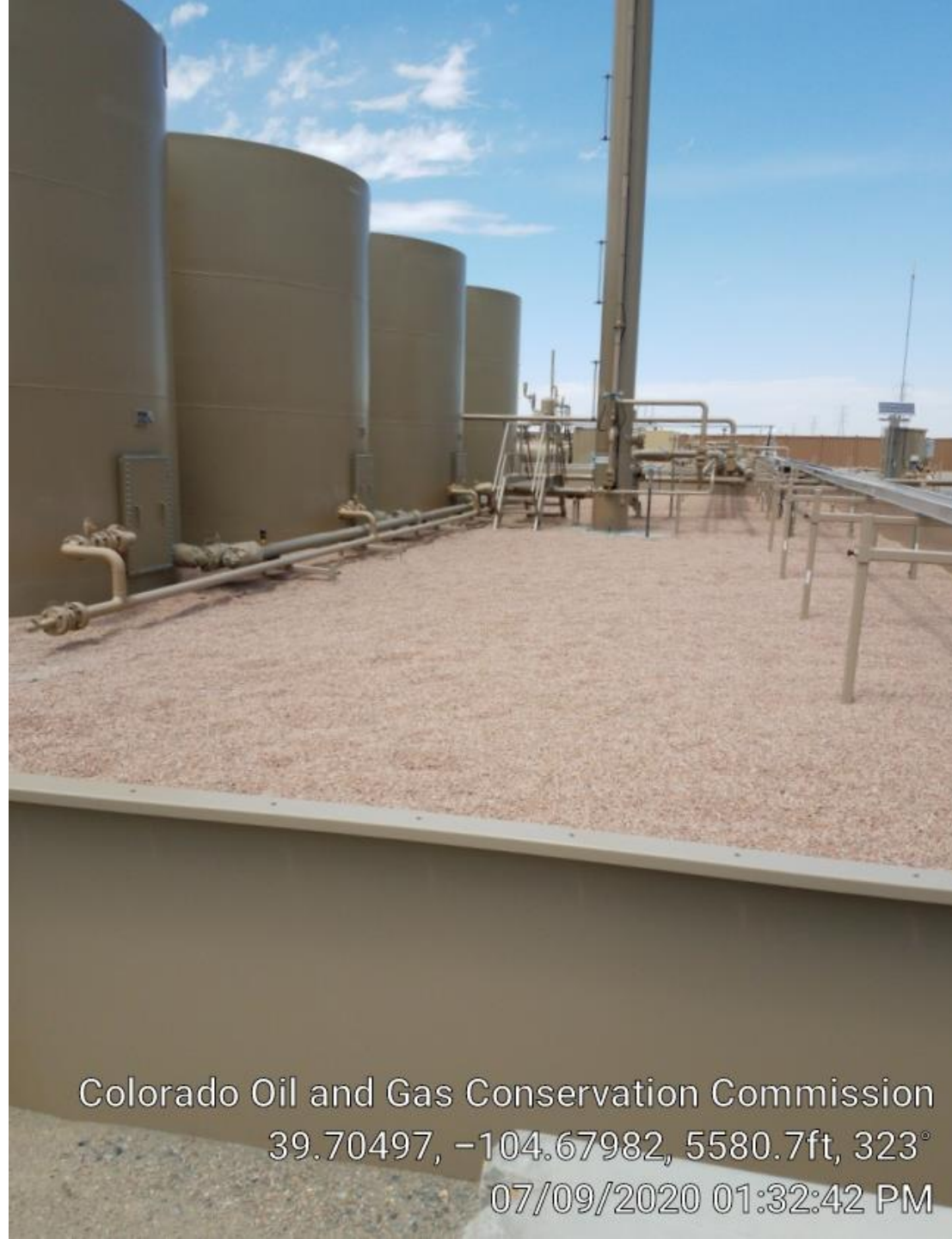
Colorado Oil and Gas Conservation Commission

39.70519, -104.68081, 5577.4ft, 87°

07/09/2020 01:26:40 PM



Colorado Oil and Gas Conservation Commission  
39.70503, -104.67999, 5570.9ft, 20°  
07/09/2020 01:33:01 PM



Colorado Oil and Gas Conservation Commission  
39.70497, -104.67982, 5580.7ft, 323°  
07/09/2020 01:32:42 PM

# CRUDE OIL

## 500 BBLs

AIRS ID # 005-1724-001

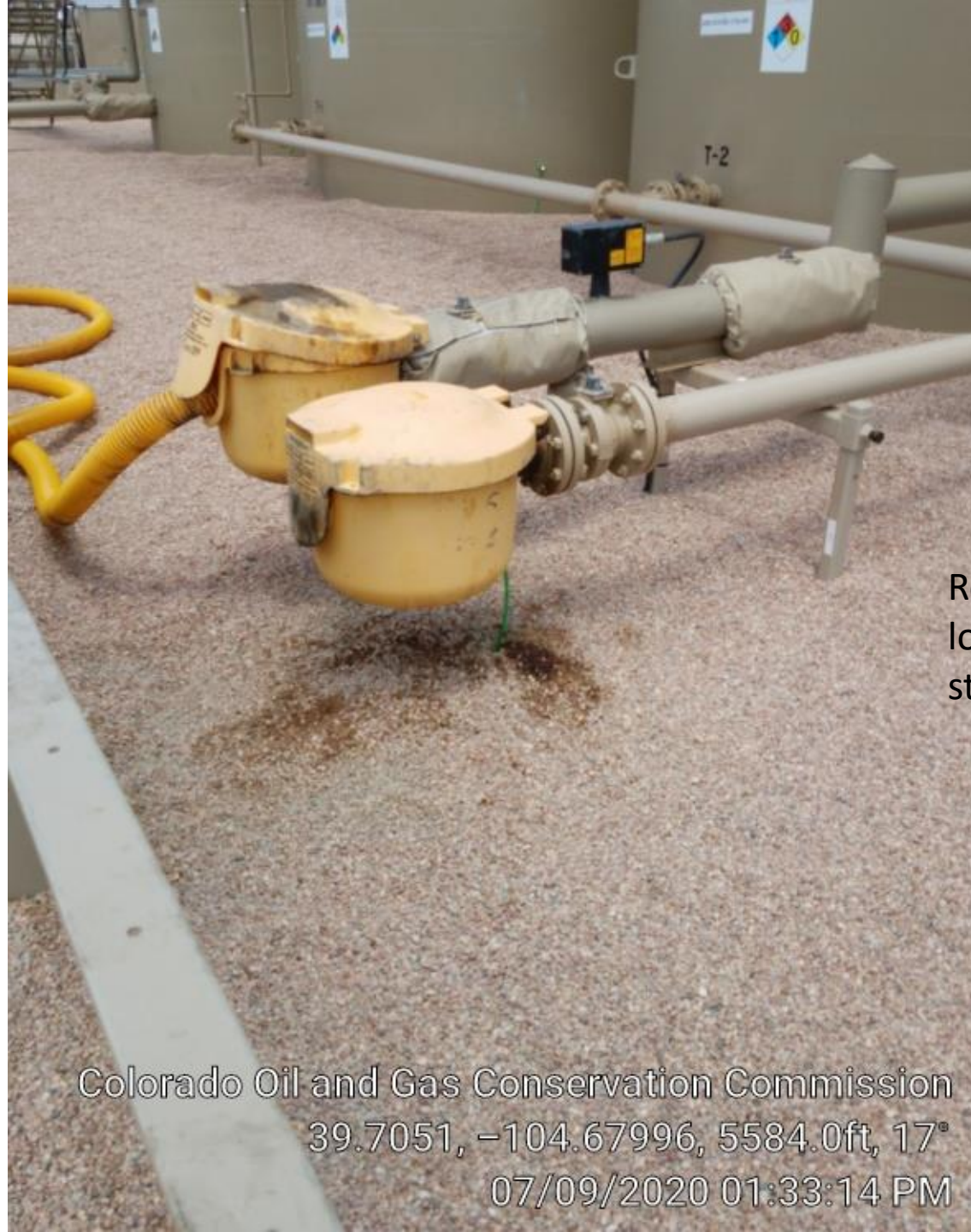


## T-3

Colorado Oil and Gas Conservation Commission  
39.70508, -104.67996, 5580.7ft, 67°  
07/09/2020 01:33:10 PM



Colorado Oil and Gas Conservation Commission  
39.70518, -104.67993, 5567.6ft, 122°  
07/09/2020 01:33:54 PM



Remove hose from  
loadout to close top,  
staining.

Colorado Oil and Gas Conservation Commission  
39.7051, -104.67996, 5584.0ft, 17°  
07/09/2020 01:33:14 PM



Colorado Oil and Gas Conservation Commission  
39.70536, -104.68001, 5567.6ft, 53°  
07/09/2020 01:29:32 PM



Colorado Oil and Gas Conservation Commission  
39.70536, -104.68001, 5567.6ft, 73°  
07/09/2020 01:29:34 PM



Colorado Oil and Gas Conservation Commission  
39.70538, -104.67999, 5567.6ft, 4°  
07/09/2020 01:29:40 PM



ECD auto on.

Colorado Oil and Gas Conservation Commission  
39.70551, -104.67994, 5574.1ft, 347°  
07/09/2020 01:30:11 PM



Colorado Oil and Gas Conservation Commission  
39.70537, -104.67973, 5570.9ft, 237°  
07/09/2020 01:31:14 PM



Colorado Oil and Gas Conservation Commission  
39.70552, -104.67975, 5580.7ft, 179°  
07/09/2020 01:30:38 PM



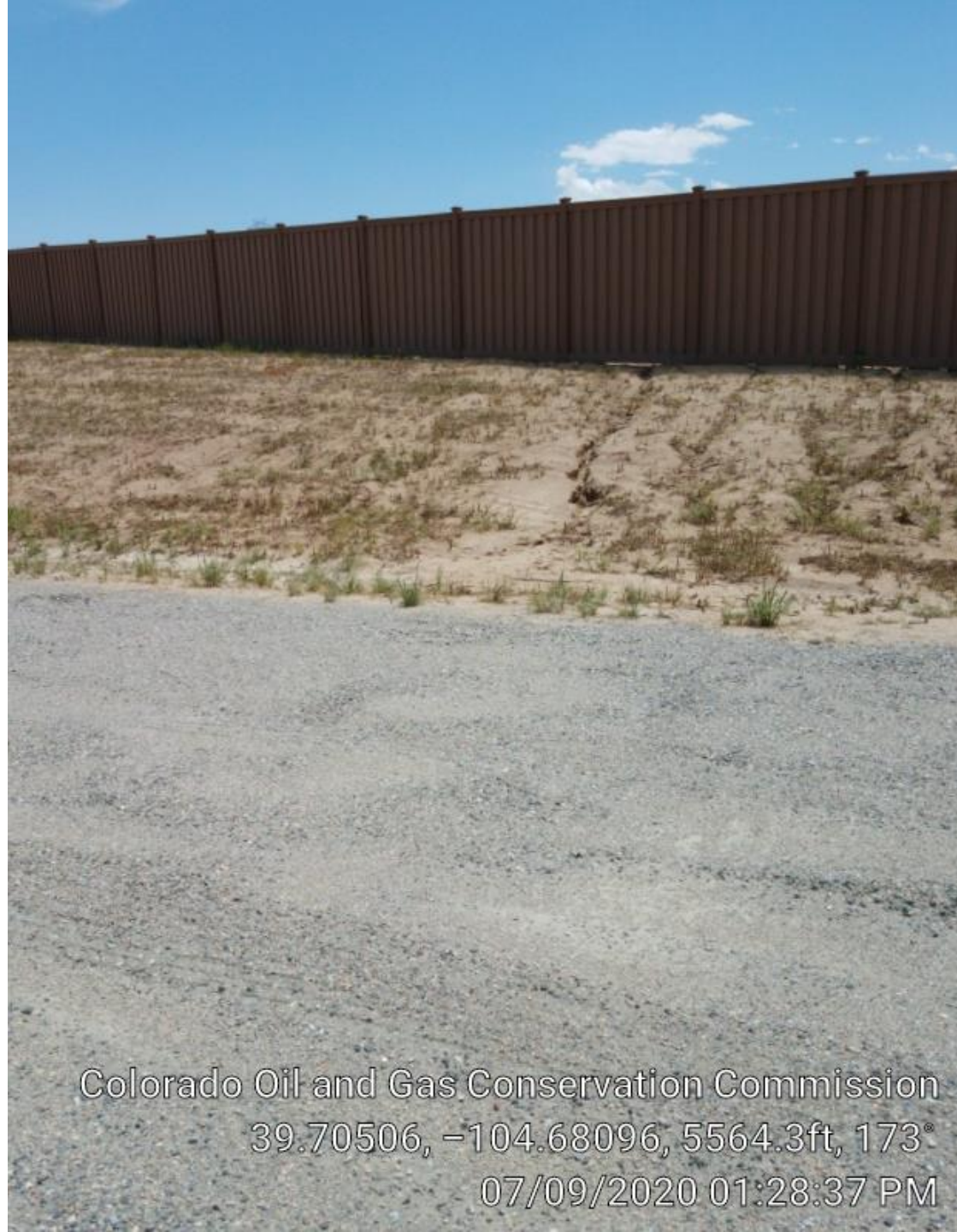
Colorado Oil and Gas Conservation Commission  
39.70537, -104.67973, 5577.4ft, 206°  
07/09/2020 01:31:17 PM



Colorado Oil and Gas Conservation Commission  
39.70531, -104.67975, 5577.4ft, 29°  
07/09/2020 01:31:58 PM



Colorado Oil and Gas Conservation Commission  
39.7051, -104.67974, 5593.8ft, 219°  
07/09/2020 01:32:23 PM



Erosion south of  
pumping unit.

Colorado Oil and Gas Conservation Commission  
39.70506, -104.68096, 5564.3ft, 173°  
07/09/2020 01:28:37 PM