

6/24/20 ~ 30 cubic yards
Total ~ 30 cubic yards
Transported to Buffalo Ridge Landfill

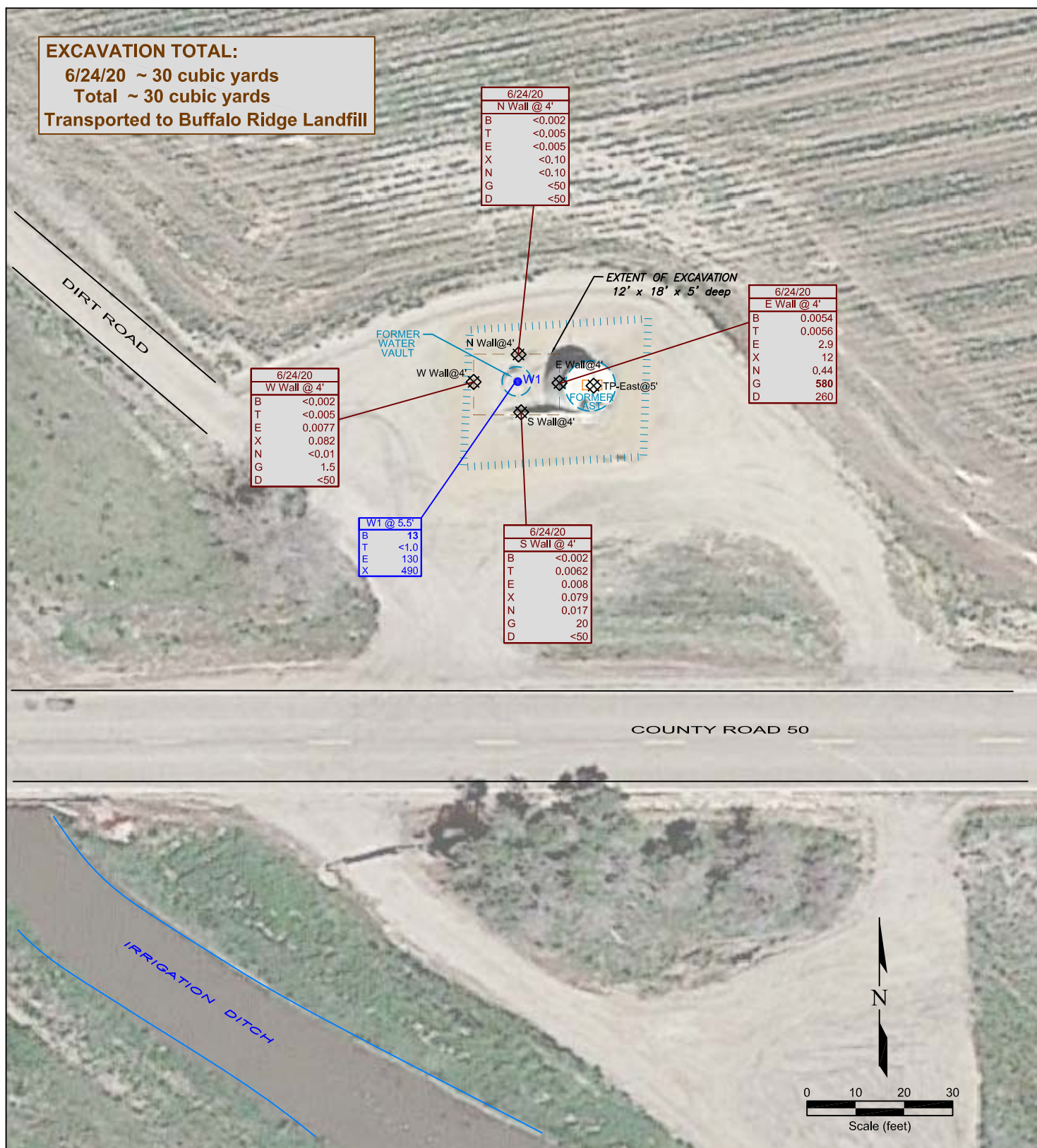



Figure 3
**EXTENT OF EXCAVATION
WITH SOIL CHEMISTRY MAP**
June 24, 2020
NOBLE ENERGY, INC.
CPC HOSHIKO 35-1, HOSHIKO 35-14 (AST Pit)
SESW Sec. 35 T5N, R64W
Weld County, Colorado

Project No. C020-049	Prepared by	Drawn by TA	
Date 6/25/20	Reviewed by EB	Filename 20049T	