



Crestone Peak Resources

Schlumberger

Plan 0

Borehole:	Well:	Field:	Structure:
Original Hole	Eastern Hills 4-65 17-18 3FH	CO, Arapahoe County (NAD 83 CZ)	Crestone Peak 02-05S-65W (Eastern Hills South Pad)

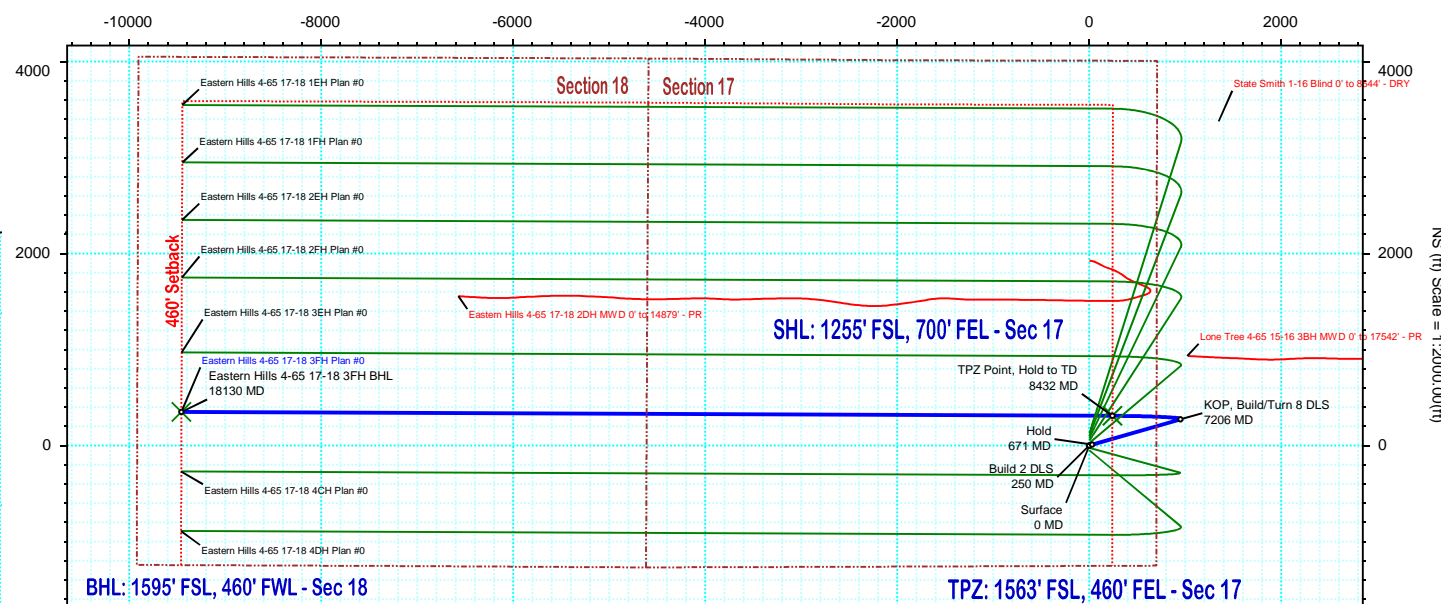
Gravity & Magnetic Parameters						Surface Location						NAD83 Colorado State Plane, Central Zone, US Feet						Miscellaneous											
Model:		HDGM 2020		Dip: 66.331°		Date:		16-Apr-2020		Lat:		N 39 41 59.95		Northing:		1680888.44ftUS		Grid Conv:		0.5166°		Slot:		Eastern Hills 4-65		TVD Ref:		KB 28ft(5669ft above MSL)	
MagDec:		8.58°		FS:		51550.728nT		Gravity FS:		998.913mgn		(9.80665 Based)		Lon:		W 104 40 51.20		Easting:		3230480.72ftUS		Scale Fact:		0.99999049		Plan:		Eastern Hills 4-65 17-18 3FH Plan #0	

Proposal

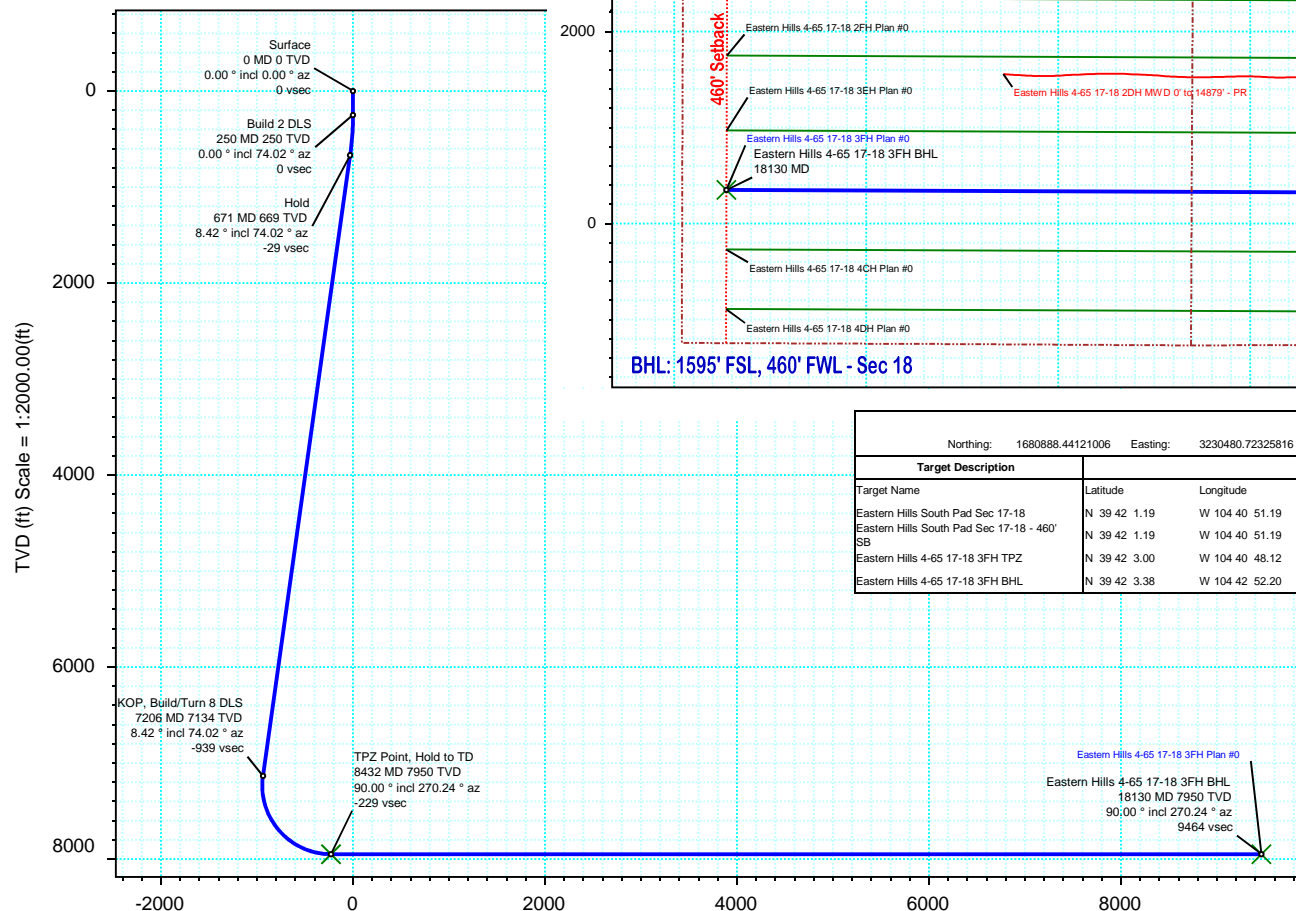
EW (ft) Scale = 1:2000.00(ft)



True North
Tot Corr (M->T 8.580°)
Mag Dec (8.580°)
Grid Conv (0.517°)



NS (ft) Scale = 1:2000.00(ft)



Vertical Section (ft) Azim = 272.11° Scale = 1:2000.00(ft) Origin = 0N/-S, 0E/-W

Surface Location								
Northing: 1680888.44121006			Easting: 3230480.72325816			Latitude: N 39 41 59.95		
						Longitude: W 104 40 51.20		
						VSec Azimuth: 272.11		
Target Description		Grid Coord		Local Coord				
Target Name		Latitude	Longitude	Northings	Easting	TVD	VSec	
Eastern Hills South Pad Sec 17-18		N 39 42 1.19	W 104 40 51.19	1681013.38	3230479.88	5669.00	4.32	124.94
Eastern Hills South Pad Sec 17-18 - 460' SB		N 39 42 1.19	W 104 40 51.19	1681013.38	3230479.88	5669.00	4.32	124.94
Eastern Hills 4-65 17-18 3FH TPZ		N 39 42 3.00	W 104 40 48.12	1681199.13	3230718.23	7950.00	-228.77	308.54
Eastern Hills 4-65 17-18 3FH BHL		N 39 42 3.38	W 104 42 52.20	1681151.68	3221020.54	7950.00	9463.95	348.53

Critical Points								
Critical Point	MD	INCL	AZIM	TVD	VSEC	N(+)/S(-)	E(+)/W(-)	DLS
Surface	0.00	0.00	0.00	0.00	0.00	0.00	0.00	
Build 2 DLS	250.00	0.00	74.02	250.00	0.00	0.00	0.00	0.00
Hold	670.85	8.42	74.02	669.34	-29.33	8.50	29.66	2.00
KOP, Build/Turn 8 DLS	7205.74	8.42	74.02	7133.84	-938.59	271.88	949.24	0.00
TPZ Point, Hold to TD	8431.73	90.00	270.24	7950.00	-228.77	308.54	240.30	8.00
Eastern Hills 4-65 17-18 3FH BHL	18129.65	90.00	270.24	7950.00	9463.95	348.53	-9457.53	0.00

Eastern Hills 4-65 17-18 3FH Plan #0 Proposal Geodetic Report

(Def Plan)

Report Date: April 17, 2020 - 07:43 AM
Client: Crestone Peak Resources
Field: CO, Arapahoe County (NAD 83 CZ)
Structure / Slot: Crestone Peak 02-05S-65W (Eastern Hills South Pad) / Eastern Hills 4-65 17-18 3FH
Well: Eastern Hills 4-65 17-18 3FH
Borehole: Original Hole
UWI / API#: Unknown / Unknown
Survey Name: Eastern Hills 4-65 17-18 3FH Plan #0
Survey Date: April 16, 2020
Tort / AHD / DDI / ERD Ratio: 106.497 ° / 11412.601 ft / 6.443 / 1.436
Coordinate Reference System: NAD83 Colorado State Plane, Central Zone, US Feet
Location Lat / Long: N 39° 41' 59.95320", W 104° 40' 51.19680"
Location Grid N/E Y/X: N 1680888.441 ftUS, E 3230480.723 ftUS
CRS Grid Convergence Angle: 0.5166 °
Grid Scale Factor: 0.99999049
Version / Patch: 2.10.810.1

Survey / DLS Computation: Minimum Curvature / Lubinski
Vertical Section Azimuth: 272.111 ° (True North)
Vertical Section Origin: 0.000 ft, 0.000 ft
TVD Reference Datum: KB 28ft
TVD Reference Elevation: 5669.000 ft above MSL
Seabed / Ground Elevation: 5641.000 ft above MSL
Magnetic Declination: 8.580 °
Total Gravity Field Strength: 998.9127mgn (9.80665 Based)
Gravity Model: GARM
Total Magnetic Field Strength: 51550.728 nT
Magnetic Dip Angle: 66.331 °
Declination Date: April 16, 2020
Magnetic Declination Model: HDGM 2020
North Reference: True North
Grid Convergence Used: 0.0000 °
Total Corr Mag North→True North: 8.5796 °
Local Coord Referenced To: Well Head

Comments	MD (ft)	Incl (°)	Azim True (°)	TVD (ft)	VSEC (ft)	NS (ft)	EW (ft)	DLS (°/100ft)	Northing (ftUS)	Easting (ftUS)	Latitude (°)	Longitude (°)
Surface	0.00	0.00	0.00	0.00	0.00	0.00	0.00	N/A	1680888.44	3230480.72	39.699987	-104.680888
	100.00	0.00	74.02	100.00	0.00	0.00	0.00	0.00	1680888.44	3230480.72	39.699987	-104.680888
	200.00	0.00	74.02	200.00	0.00	0.00	0.00	0.00	1680888.44	3230480.72	39.699987	-104.680888
Build 2 DLS	250.00	0.00	74.02	250.00	0.00	0.00	0.00	0.00	1680888.44	3230480.72	39.699987	-104.680888
	300.00	1.00	74.02	300.00	-0.41	0.12	0.42	2.00	1680888.57	3230481.14	39.699987	-104.680887
	400.00	3.00	74.02	399.93	-3.73	1.08	3.77	2.00	1680889.56	3230484.49	39.699990	-104.680875
	500.00	5.00	74.02	499.68	-10.36	3.00	10.48	2.00	1680891.54	3230491.18	39.699995	-104.680851
	600.00	7.00	74.02	599.13	-20.30	5.88	20.53	2.00	1680894.51	3230501.20	39.700003	-104.680815
Hold	670.85	8.42	74.02	669.34	-29.33	8.50	29.66	2.00	1680897.20	3230510.31	39.700010	-104.680783
	700.00	8.42	74.02	698.17	-33.39	9.67	33.77	0.00	1680898.42	3230514.40	39.700014	-104.680768
	800.00	8.42	74.02	797.10	-47.30	13.70	47.84	0.00	1680902.57	3230528.44	39.700025	-104.680718
	900.00	8.42	74.02	896.02	-61.21	17.73	61.91	0.00	1680906.73	3230542.47	39.700036	-104.680668
	1000.00	8.42	74.02	994.94	-75.13	21.76	75.98	0.00	1680910.89	3230556.50	39.700047	-104.680618
	1100.00	8.42	74.02	1093.87	-89.04	25.79	90.05	0.00	1680915.04	3230570.54	39.700058	-104.680568
	1200.00	8.42	74.02	1192.79	-102.96	29.82	104.13	0.00	1680919.20	3230584.57	39.700069	-104.680518
	1300.00	8.42	74.02	1291.71	-116.87	33.85	118.20	0.00	1680923.36	3230598.61	39.700080	-104.680468
	1400.00	8.42	74.02	1390.63	-130.78	37.88	132.27	0.00	1680927.52	3230612.64	39.700091	-104.680418
	1500.00	8.42	74.02	1489.56	-144.70	41.91	146.34	0.00	1680931.67	3230626.68	39.700102	-104.680368
	1600.00	8.42	74.02	1588.48	-158.61	45.95	160.41	0.00	1680935.83	3230640.71	39.700113	-104.680318
	1700.00	8.42	74.02	1687.40	-172.53	49.98	174.48	0.00	1680939.99	3230654.75	39.700124	-104.680268
	1800.00	8.42	74.02	1786.33	-186.44	54.01	188.56	0.00	1680944.14	3230668.78	39.700135	-104.680218
	1900.00	8.42	74.02	1885.25	-200.35	58.04	202.63	0.00	1680948.30	3230682.82	39.700146	-104.680168
	2000.00	8.42	74.02	1984.17	-214.27	62.07	216.70	0.00	1680952.46	3230696.85	39.700157	-104.680118
	2100.00	8.42	74.02	2083.09	-228.18	66.10	230.77	0.00	1680956.62	3230710.89	39.700168	-104.680068
	2200.00	8.42	74.02	2182.02	-242.09	70.13	244.84	0.00	1680960.77	3230724.92	39.700180	-104.680018
	2300.00	8.42	74.02	2280.94	-256.01	74.16	258.92	0.00	1680964.93	3230738.96	39.700191	-104.679968
	2400.00	8.42	74.02	2379.86	-269.92	78.19	272.99	0.00	1680969.09	3230752.99	39.700202	-104.679918
	2500.00	8.42	74.02	2478.79	-283.84	82.22	287.06	0.00	1680973.24	3230767.03	39.700213	-104.679868
	2600.00	8.42	74.02	2577.71	-297.75	86.25	301.13	0.00	1680977.40	3230781.06	39.700224	-104.679818
	2700.00	8.42	74.02	2676.63	-311.66	90.28	315.20	0.00	1680981.56	3230795.10	39.700235	-104.679768
	2800.00	8.42	74.02	2775.55	-325.58	94.31	329.27	0.00	1680985.72	3230809.13	39.700246	-104.679718
	2900.00	8.42	74.02	2874.48	-339.49	98.34	343.35	0.00	1680989.87	3230823.17	39.700257	-104.679668
	3000.00	8.42	74.02	2973.40	-353.41	102.37	357.42	0.00	1680994.03	3230837.20	39.700268	-104.679618
	3100.00	8.42	74.02	3072.32	-367.32	106.40	371.49	0.00	1680998.19	3230851.23	39.700279	-104.679568
	3200.00	8.42	74.02	3171.25	-381.23	110.43	385.56	0.00	1681002.34	3230865.27	39.700290	-104.679518
	3300.00	8.42	74.02	3270.17	-395.15	114.46	399.63	0.00	1681006.50	3230879.30	39.700301	-104.679468
	3400.00	8.42	74.02	3369.09	-409.06	118.49	413.71	0.00	1681010.66	3230893.34	39.700312	-104.679418
	3500.00	8.42	74.02	3468.01	-422.98	122.52	427.78	0.00	1681014.81	3230907.37	39.700323	-104.679368
	3600.00	8.42	74.02	3566.94	-436.89	126.55	441.85	0.00	1681018.97	3230921.41	39.700334	-104.679318
	3700.00	8.42	74.02	3665.86	-450.80	130.58	455.92	0.00	1681023.13	3230935.44	39.700345	-104.679268
	3800.00	8.42	74.02	3764.78	-464.72	134.61	469.99	0.00	1681027.29	3230949.48	39.700357	-104.679218
	3900.00	8.42	74.02	3863.71	-478.63	138.64	484.07	0.00	1681031.44	3230963.51	39.700368	-104.679168
	4000.00	8.42	74.02	3962.63	-492.54	142.68	498.14	0.00	1681035.60	3230977.55	39.700379	-104.679118
	4100.00	8.42	74.02	4061.55	-506.46	146.71	512.21	0.00	1681039.76	3230991.58	39.700390	-104.679068
	4200.00	8.42	74.02	4160.48	-520.37	150.74	526.28	0.00	1681043.91	3231005.62	39.700401	-104.679018
	4300.00	8.42	74.02	4259.40	-534.29	154.77	540.35	0.00	1681048.07	3231019.65	39.700412	-104.678968
	4400.00	8.42	74.02	4358.32	-548.20	158.80	554.42	0.00	1681052.23	3231033.69	39.700423	-104.678918
	4500.00	8.42	74.02	4457.24	-562.11	162.83	568.50	0.00	1681056.39	3231047.72	39.700434	-104.678868
	4600.00	8.42	74.02	4556.17	-576.03	166.86	582.57	0.00	1681060.54	3231061.76	39.700445	-104.678818
	4700.00	8.42	74.02	4655.09	-589.94	170.89	596.64	0.00	1681064.70	3231075.79	39.700456	-104.678768
	4800.00	8.42	74.02	4754.01	-603.86	174.92	610.71	0.00	1681068.86	3231089.83	39.700467	-104.678718
	4900.00	8.42	74.02	4852.94	-617.77	178.95	624.78	0.00	1681073.01	3231103.86	39.700478	-104.678668
	5000.00	8.42	74.02	4951.86	-631.68	182.98	638.86	0.00	1681077.17	3231117.90	39.700489	-104.678618
	5100.00	8.42	74.02	5050.78	-645.60	187.01	652.93	0.00	1681081.33	3231131.93	39.700500	-104.678568
	5200.00	8.42	74.02	5149.70	-659.51	191.04	667.00	0.00	1681085.49	3231145.97	39.700511	-104.678518
	5300.00	8.42	74.02	5248.63	-673.42	195.07	681.07	0.00	1681089.64	3231160.00	39.700522	-104.678468
	5400.00	8.42	74.02	5347.55	-687.34	199.10	695.14	0.00	1681093.80	3231174.03	39.700534	-104.678418
	5500.00	8.42	74.02	5446.47	-701.25	203.13	709.21	0.00	1681097.96	3231188.07	39.700545	-104.678368
	5600.00	8.42	74.02	5545.40	-715.17	207.16	723.29	0.00	1681102.11	3231202.10	39.700556	-104.678318
	5700.00	8.42	74.02	5644.32	-729.08	211.19	737.36	0.00	1681106.27	3231216.14	39.700567	-104.678268
	5800.00	8.42	74.02	5743.24	-742.99	215.22	751.43	0.00	1681110.43	3231230.17	39.700578	-104.678218
	5900.00	8.42	74.02	5842.16	-756.91	219.25	765.50	0.00	1681114.59	3231244.21	39.700589	-104.678168
	6000.00	8.42	74.02	5941.09	-770.82	223.28	779.57	0.00	1681118.74	3231258.24	39.700600	-104.678117
	6100.00	8.42	74.02	6040.01	-784.74	227.31	793.65	0.00	1681122.90	3231272.28	39.700611	-104.678067
	6200.00	8.42	74.02	6138.93	-798.65	231.34	807.72	0.00	1681127.06	3231286.31	39.700622	-104.678017
	6300.00	8.42	74.02	6237.86	-812.56	235.38	821.79	0.00	1681131.21	3231300.35	39.700633	-104.677967
	6400.00	8.42	74.02	6336.78	-826.48	239.41	835.86	0.00	1681135.37	3231314.38	39.700644	-104.677917
	6500.00	8.42	74.02	6435.70	-840.39	243.44	849.93	0.00	1681139.53	3231328.42	39.700655	-104.677867
	6600.00	8.42	74.02	6534.62	-854.31	247.47	864.00	0.00	1681143.68	3231342.45	39.700666	-104.677817
	6700.00	8.42	74.02	6633.55	-868.22	251.50	878.08	0.00	1681147.84	3231356.49	39.700677	-104.677767
	6800.00	8.42	74.02	6732.47	-882.13	255.53	892.15	0.00	1681152.00	3231370.52	39.700688	-104.677717
	6900.00	8.42	74.02	6831.39	-896.05	259.56	906.22	0.00	1681156.16	3231384.56	39.700700	-104.677667
	7000.00	8.42	74.02	6930.32	-909.96	263.59	920.29	0.00	1681160.31	3231398.59	39.700711	-104.677617

Comments	MD (ft)	Incl (°)	Azim True (°)	TVD (ft)	VSEC (ft)	NS (ft)	EW (ft)	DLS (°/100ft)	Northing (ftUS)	Easting (ftUS)	Latitude (°)	Longitude (°)
	7300.00	2.43	13.06	7227.69	-945.53	275.73	956.34	8.00	1681172.78	3231434.52	39.700744	-104.677489
	7400.00	7.83	287.74	7327.34	-939.37	279.87	950.32	8.00	1681176.87	3231428.47	39.700755	-104.677511
	7500.00	15.64	278.73	7425.18	-919.39	284.00	930.48	8.00	1681180.81	3231408.60	39.700767	-104.677581
	7600.00	23.57	275.67	7519.31	-885.99	288.03	897.21	8.00	1681184.54	3231375.29	39.700778	-104.677699
	7700.00	31.54	274.10	7607.89	-839.82	291.88	851.15	8.00	1681187.98	3231329.20	39.700788	-104.677863
	7800.00	39.52	273.11	7689.21	-781.77	295.48	793.19	8.00	1681191.05	3231271.21	39.700798	-104.678069
	7900.00	47.51	272.41	7761.67	-712.98	298.76	724.48	8.00	1681193.71	3231202.47	39.700807	-104.678313
	8000.00	55.49	271.86	7823.87	-634.79	301.65	646.33	8.00	1681195.90	3231124.30	39.700815	-104.678591
	8100.00	63.49	271.42	7874.60	-548.70	304.10	560.28	8.00	1681197.58	3231038.24	39.700822	-104.678897
	8200.00	71.48	271.03	7912.87	-456.41	306.06	468.00	8.00	1681198.71	3230945.94	39.700827	-104.679225
	8300.00	79.47	270.68	7937.93	-359.71	307.50	371.29	8.00	1681199.27	3230849.22	39.700831	-104.679568
	8400.00	87.46	270.34	7949.30	-260.48	308.38	272.02	8.00	1681199.25	3230749.95	39.700834	-104.679921
TPZ Point, Hold to TD	8431.73	90.00	270.24	7950.00	-228.77	308.54	240.30	8.00	1681199.13	3230718.23	39.700834	-104.680034
	8500.00	90.00	270.24	7950.00	-160.55	308.82	172.03	0.00	1681198.79	3230649.96	39.700835	-104.680277
	8600.00	90.00	270.24	7950.00	-60.60	309.23	72.04	0.00	1681198.30	3230549.97	39.700836	-104.680632
	8700.00	90.00	270.24	7950.00	39.35	309.64	-27.96	0.00	1681197.82	3230449.97	39.700837	-104.680987
	8800.00	90.00	270.24	7950.00	139.29	310.05	-127.96	0.00	1681197.33	3230349.97	39.700838	-104.681343
	8900.00	90.00	270.24	7950.00	239.24	310.47	-227.96	0.00	1681196.84	3230249.97	39.700839	-104.681698
	9000.00	90.00	270.24	7950.00	339.19	310.88	-327.96	0.00	1681196.35	3230149.98	39.700840	-104.682054
	9100.00	90.00	270.24	7950.00	439.13	311.29	-427.96	0.00	1681195.86	3230049.98	39.700842	-104.682409
	9200.00	90.00	270.24	7950.00	539.08	311.70	-527.96	0.00	1681195.37	3229949.98	39.700843	-104.682764
	9300.00	90.00	270.24	7950.00	639.03	312.12	-627.96	0.00	1681194.88	3229849.98	39.700844	-104.683120
	9400.00	90.00	270.24	7950.00	738.97	312.53	-727.96	0.00	1681194.39	3229749.99	39.700845	-104.683475
	9500.00	90.00	270.24	7950.00	838.92	312.94	-827.96	0.00	1681193.90	3229649.99	39.700846	-104.683830
	9600.00	90.00	270.24	7950.00	938.87	313.35	-927.96	0.00	1681193.41	3229549.99	39.700847	-104.684186
	9700.00	90.00	270.24	7950.00	1038.81	313.77	-1027.95	0.00	1681192.92	3229449.99	39.700848	-104.684541
	9800.00	90.00	270.24	7950.00	1138.76	314.18	-1127.95	0.00	1681192.43	3229350.00	39.700849	-104.684897
	9900.00	90.00	270.24	7950.00	1238.71	314.59	-1227.95	0.00	1681191.94	3229250.00	39.700851	-104.685252
	10000.00	90.00	270.24	7950.00	1338.65	315.00	-1327.95	0.00	1681191.46	3229150.00	39.700852	-104.685607
	10100.00	90.00	270.24	7950.00	1438.60	315.42	-1427.95	0.00	1681190.97	3229050.00	39.700853	-104.685963
	10200.00	90.00	270.24	7950.00	1538.55	315.83	-1527.95	0.00	1681190.48	3228950.00	39.700854	-104.686318
	10300.00	90.00	270.24	7950.00	1638.49	316.24	-1627.95	0.00	1681189.99	3228850.01	39.700855	-104.686674
	10400.00	90.00	270.24	7950.00	1738.44	316.65	-1727.95	0.00	1681189.50	3228750.01	39.700856	-104.687029
	10500.00	90.00	270.24	7950.00	1838.38	317.07	-1827.95	0.00	1681189.01	3228650.01	39.700857	-104.687384
	10600.00	90.00	270.24	7950.00	1938.33	317.48	-1927.95	0.00	1681188.52	3228550.01	39.700858	-104.687740
	10700.00	90.00	270.24	7950.00	2038.28	317.89	-2027.95	0.00	1681188.03	3228450.02	39.700859	-104.688095
	10800.00	90.00	270.24	7950.00	2138.22	318.30	-2127.95	0.00	1681187.54	3228350.02	39.700861	-104.688450
	10900.00	90.00	270.24	7950.00	2238.17	318.72	-2227.94	0.00	1681187.05	3228250.02	39.700862	-104.688806
	11000.00	90.00	270.24	7950.00	2338.12	319.13	-2327.94	0.00	1681186.56	3228150.02	39.700863	-104.689161
	11100.00	90.00	270.24	7950.00	2438.06	319.54	-2427.94	0.00	1681186.07	3228050.03	39.700864	-104.689517
	11200.00	90.00	270.24	7950.00	2538.01	319.95	-2527.94	0.00	1681185.59	3227950.03	39.700865	-104.689872
	11300.00	90.00	270.24	7950.00	2637.96	320.37	-2627.94	0.00	1681185.10	3227850.03	39.700866	-104.690227
	11400.00	90.00	270.24	7950.00	2737.90	320.78	-2727.94	0.00	1681184.61	3227750.03	39.700867	-104.690583
	11500.00	90.00	270.24	7950.00	2837.85	321.19	-2827.94	0.00	1681184.12	3227650.04	39.700868	-104.690938
	11600.00	90.00	270.24	7950.00	2937.80	321.60	-2927.94	0.00	1681183.63	3227550.04	39.700869	-104.691294
	11700.00	90.00	270.24	7950.00	3037.74	322.02	-3027.94	0.00	1681183.14	3227450.04	39.700871	-104.691649
	11800.00	90.00	270.24	7950.00	3137.69	322.43	-3127.94	0.00	1681182.65	3227350.04	39.700872	-104.692004
	11900.00	90.00	270.24	7950.00	3237.64	322.84	-3227.94	0.00	1681182.16	3227250.04	39.700873	-104.692360
	12000.00	90.00	270.24	7950.00	3337.58	323.25	-3327.94	0.00	1681181.67	3227150.05	39.700874	-104.692715
	12100.00	90.00	270.24	7950.00	3437.53	323.66	-3427.93	0.00	1681181.18	3227050.05	39.700875	-104.693070
	12200.00	90.00	270.24	7950.00	3537.48	324.08	-3527.93	0.00	1681180.69	3226950.05	39.700876	-104.693426
	12300.00	90.00	270.24	7950.00	3637.42	324.49	-3627.93	0.00	1681180.20	3226850.05	39.700877	-104.693781
	12400.00	90.00	270.24	7950.00	3737.37	324.90	-3727.93	0.00	1681179.71	3226750.06	39.700878	-104.694137
	12500.00	90.00	270.24	7950.00	3837.31	325.31	-3827.93	0.00	1681179.23	3226650.06	39.700879	-104.694492
	12600.00	90.00	270.24	7950.00	3937.26	325.73	-3927.93	0.00	1681178.74	3226550.06	39.700880	-104.694847
	12700.00	90.00	270.24	7950.00	4037.21	326.14	-4027.93	0.00	1681178.25	3226450.06	39.700881	-104.695203
	12800.00	90.00	270.24	7950.00	4137.15	326.55	-4127.93	0.00	1681177.76	3226350.07	39.700883	-104.695558
	12900.00	90.00	270.24	7950.00	4237.10	326.96	-4227.93	0.00	1681177.27	3226250.07	39.700884	-104.695914
	13000.00	90.00	270.24	7950.00	4337.05	327.38	-4327.93	0.00	1681176.78	3226150.07	39.700885	-104.696269
	13100.00	90.00	270.24	7950.00	4436.99	327.79	-4427.93	0.00	1681176.29	3226050.07	39.700886	-104.696624
	13200.00	90.00	270.24	7950.00	4536.94	328.20	-4527.93	0.00	1681175.80	3225950.08	39.700887	-104.696980
	13300.00	90.00	270.24	7950.00	4636.89	328.61	-4627.92	0.00	1681175.31	3225850.08	39.700888	-104.697335
	13400.00	90.00	270.24	7950.00	4736.83	329.03	-4727.92	0.00	1681174.82	3225750.08	39.700889	-104.697690
	13500.00	90.00	270.24	7950.00	4836.78	329.44	-4827.92	0.00	1681174.33	3225650.08	39.700890	-104.698046
	13600.00	90.00	270.24	7950.00	4936.73	329.85	-4927.92	0.00	1681173.84	3225550.08	39.700891	-104.698401
	13700.00	90.00	270.24	7950.00	5036.67	330.26	-5027.92	0.00	1681173.35	3225450.09	39.700892	-104.698757
	13800.00	90.00	270.24	7950.00	5136.62	330.68	-5127.92	0.00	1681172.87	3225350.09	39.700893	-104.699112
	13900.00	90.00	270.24	7950.00	5236.57	331.09	-5227.92	0.00	1681172.38	3225250.09	39.700894	-104.699467
	14000.00	90.00	270.24	7950.00	5336.51	331.50	-5327.92	0.00	1681171.89	3225150.09	39.700896	-104.699823
	14100.00	90.00	270.24	7950.00	5436.46	331.91	-5427.92	0.00	1681171.40	3225050.10	39.700897	-104.700178
	14200.00	90.00	270.24	7950.00	5536.41	332.33	-5527.92	0.00	1681170.91	3224950.10	39.700898	-104.700534
	14300.00	90.00	270.24	7950.00	5636.35	332.74	-5627.92	0.00	1681170.42	3224850.10	39.700899	-104.700889
	14400.00	90.00	270.24	7950.00	5736.30	333.15	-5727.91	0.00	1681169.93	3224750.10	39.700900	-104.701244
	14500.00	90.00	270.24	7950.00	5836.24	333.56	-5827.91	0.00	1681169.44	3224650.11	39.700901	-104.701600
	14600.00	90.00	270.24	7950.00	5936.19	333.98	-5927.91	0.00	1681168.95	3224550.11	39.700902	-104.701955
	14700.00	90.00	270.24	7950.00	6036.14	334.39	-6027.91	0.00	1681168.46	3224450.11	39.700903	-104.702311
	14800.00	90.00	270.24	7950.00	6136.08	334.80	-6127.91	0.00	1681167.97	3224350.11	39.700904	-104.702666
	14900.00	90.00	270.24	7950.00	6236.03	335.21	-6227.91	0.00	1681167.48			

Comments	MD (ft)	Incl (°)	Azim True (°)	TVD (ft)	VSEC (ft)	NS (ft)	EW (ft)	DLS (°/100ft)	Northing (ftUS)	Easting (ftUS)	Latitude (°)	Longitude (°)
	18000.00	90.00	270.24	7950.00	9334.37	348.00	-9327.88	0.00	1681152.32	3221150.19	39.700938	-104.714038
	18100.00	90.00	270.24	7950.00	9434.32	348.41	-9427.88	0.00	1681151.83	3221050.19	39.700939	-104.714394
Eastern Hills 4-65 17-18 3FH BHL	18129.65	90.00	270.24	7950.00	9463.95	348.53	-9457.53	0.00	1681151.68	3221020.54	39.700939	-104.714499

Survey Type: Def Plan

Survey Error Model: ISCWSA Rev 0 *** 3-D 95.000% Confidence 2.7955 sigma
Survey Program:

Description	Part	MD From (ft)	MD To (ft)	EOU Freq (ft)	Hole Size	Casing Diameter (in)	Expected Max Inclination (deg)	Survey Tool Type	Borehole / Survey
	1	0.000	28.000	1/100.000	13.500	9.625		ZERO	Original Hole / Eastern Hills 4-65 17-18 3FH Plan #0
	1	28.000	30.000	1/100.000	13.500	9.625		ZERO	Original Hole / Eastern Hills 4-65 17-18 3FH Plan #0
	2	28.000	2200.000	1/100.000	13.500	9.625		NAL_MWD_PLUS_0.5_DEG	Original Hole / Eastern Hills 4-65 17-18 3FH Plan #0
	2	2200.000	18129.647	1/100.000	8.500	5.500		NAL_MWD_PLUS_0.5_DEG	Original Hole / Eastern Hills 4-65 17-18 3FH Plan #0