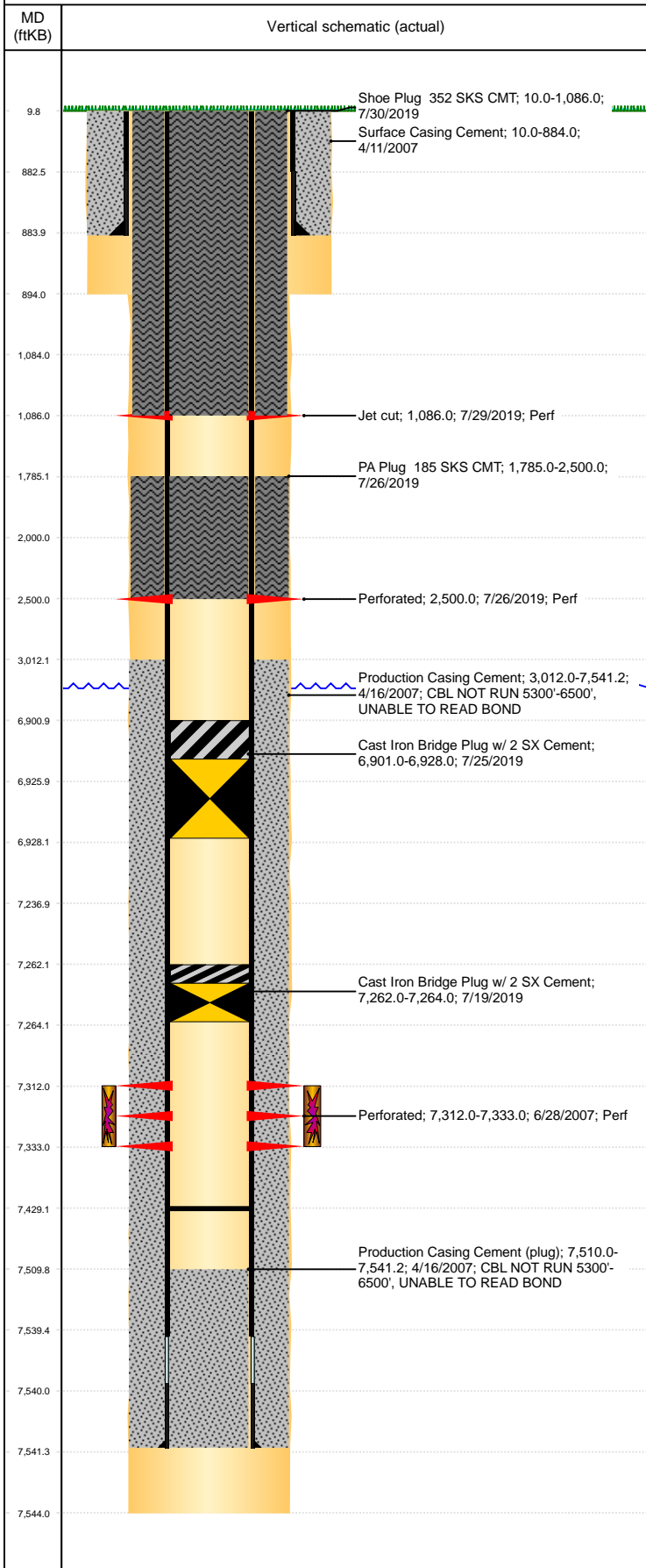


Well Name: LOCKMAN 04-14

VERTICAL, ORIGINAL HOLE, 7/8/2020 5:39:22 PM



Well Header									
API 05-123-24844			Business Unit DJ BASIN			District 15		Well Config VERTICAL	
KB - GL / MSL (ft... 10.00		Spud Date 4/10/2007		P & A Date 4/13/2020		Well Production Status PA			SoRT Yes
Comment									
Surface Location (Congressional)									
Qtr 3 SE	Qtr 4 NE	Section 4	Twonshp 6	Twonsh... N	Range 66	Rng E/... W	Actual Latitude (°) 40.51900000		Actual Longitude (°) -104.77672000
Wellbore Sections									
Section Des			Size (in)			Act Top, MD (ftKB)		Act Btm, MD (ftKB)	
SURFACE			12 1/4			10		894	
PRODUCTION			7 7/8			894		7,544	
Casing Strings									
Csg Des			Run Date		OD (in)	Wt/Len (lb/ft)	Grade	Top, MD (ftKB)	MD (ftKB)
Surface			4/11/2007		8 5/8	24.00		10.0	884.0
Production			4/15/2007		4 1/2	11.60	M-80	10.0	7,541.3
Cement									
Des					Start Date		Top (ftKB)		Btm (ftKB)
Surface Casing Cement					4/11/2007		10.0		884.0
Production Casing Cement					4/16/2007		3,012.0		7,541.3
PA Plug 185 SKS CMT					7/26/2019		1,785.0		2,500.0
Shoe Plug 352 SKS CMT					7/30/2019		10.0		1,086.0
Zone Statuses									
Zone Name		Status Date		Status	Fluid Type	Job			Prod Method
CODELL		5/9/2017		SI		PLUG AND ABANDON, 7/17/2019 12:00			
CODELL		7/19/2019		P&A					
Perforation Data									
Linked Zone			Bnch/Stg	Entered Shot Total	Top (ftKB)		Btm (ftKB)		Date
CODELL, ORIGINAL HOLE				1	1,086.00		1,086.00		7/29/2019
				6	2,500.00		2,500.00		7/26/2019
				84	7,312.00		7,333.00		6/28/2007
Stimulation Intervals									
Zone					Start Date		Top (ftKB)		Btm (ftKB)
CODELL, ORIGINAL HOLE					6/29/2007		7,312.0		7,333.0
Other In Hole									
Run Date		Des			Make		OD (in)	Top (ftKB)	Btm (ftKB)
7/19/2019		Cast Iron Bridge Plug w/ 2 SX Cement					3.99	7,262.0	7,264.0
7/25/2019		Cast Iron Bridge Plug w/ 2 SX Cement					3.99	6,901.0	6,928.0
Logs									
Date		Type					Top, MD (ftKB)		Btm, MD (ftKB)
4/15/2007		COMPENSATED DENSITY					3,200.0		7,527.0
4/15/2007		INDUCTION					875.0		7,547.0
6/26/2007		CBL/CCL/GR					2,900.0		7,508.0
12/20/2018		GYRO					10.0		6,500.0
Plug Back Total Depths									
Date		Type			Com				Depth (ftKB)
6/26/2007		FILL			DEPTH LOGGER ON CBL				7,510.0
11/1/2007		FILL			CLEAN OUT				7,429.0