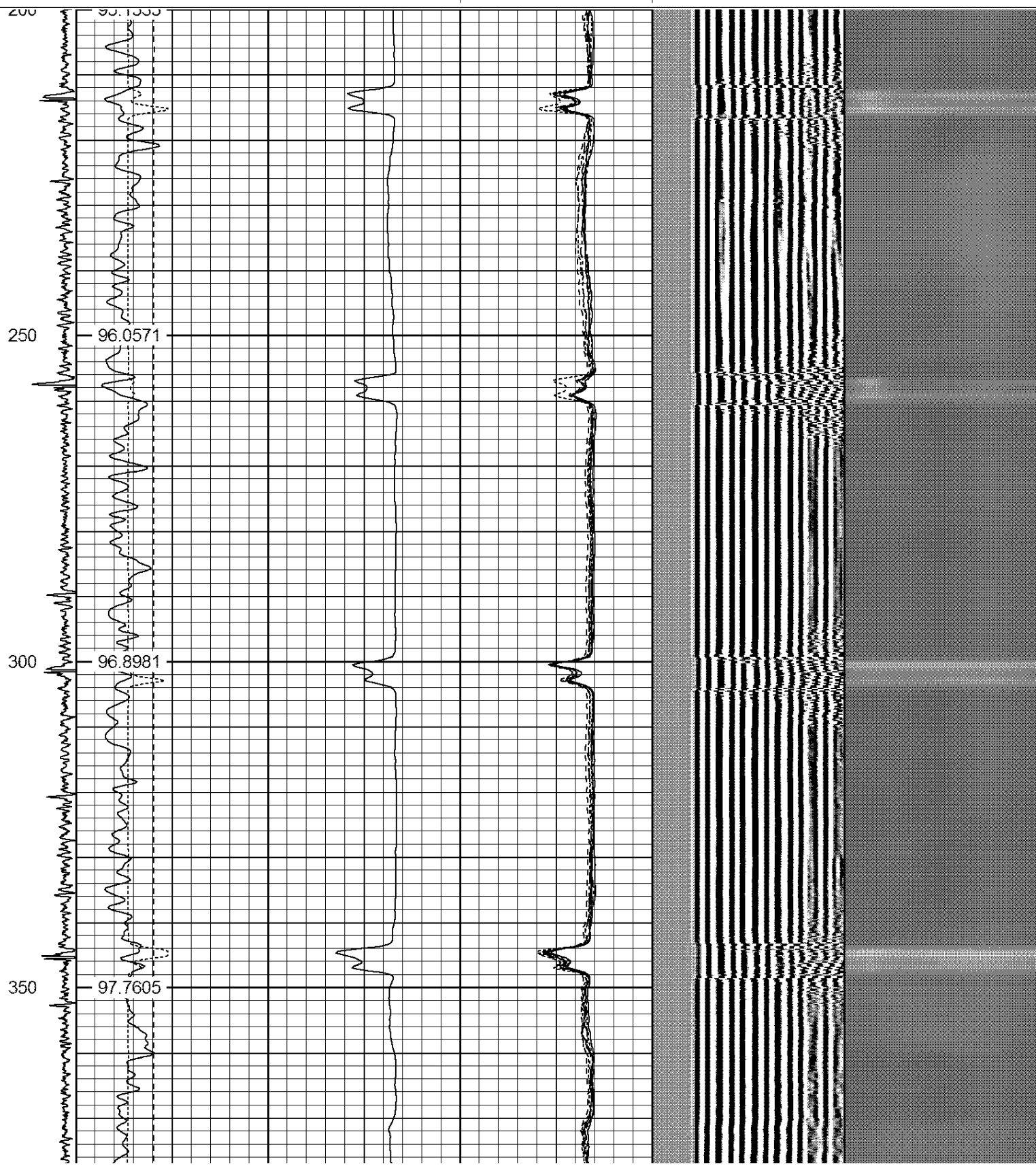
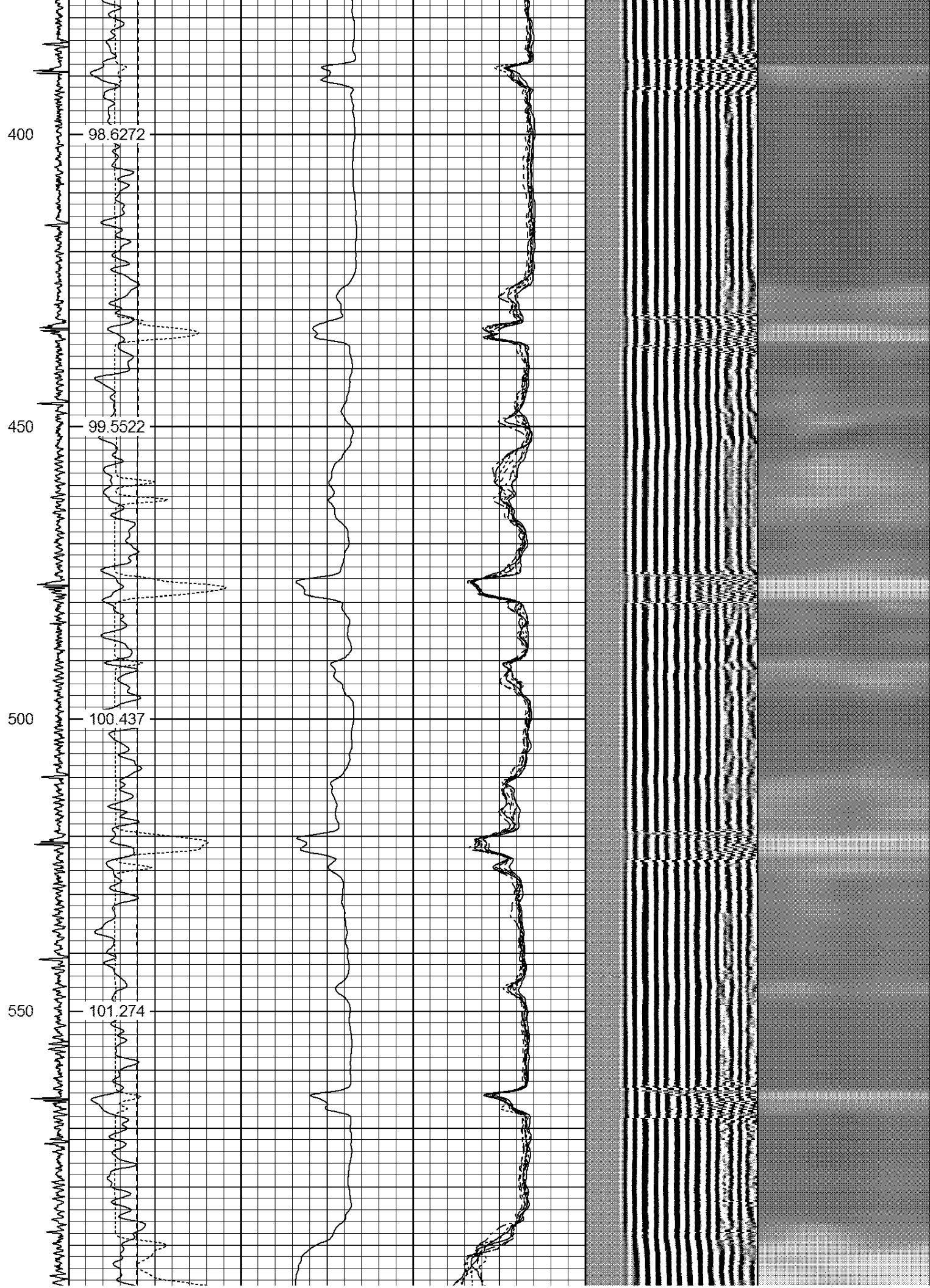


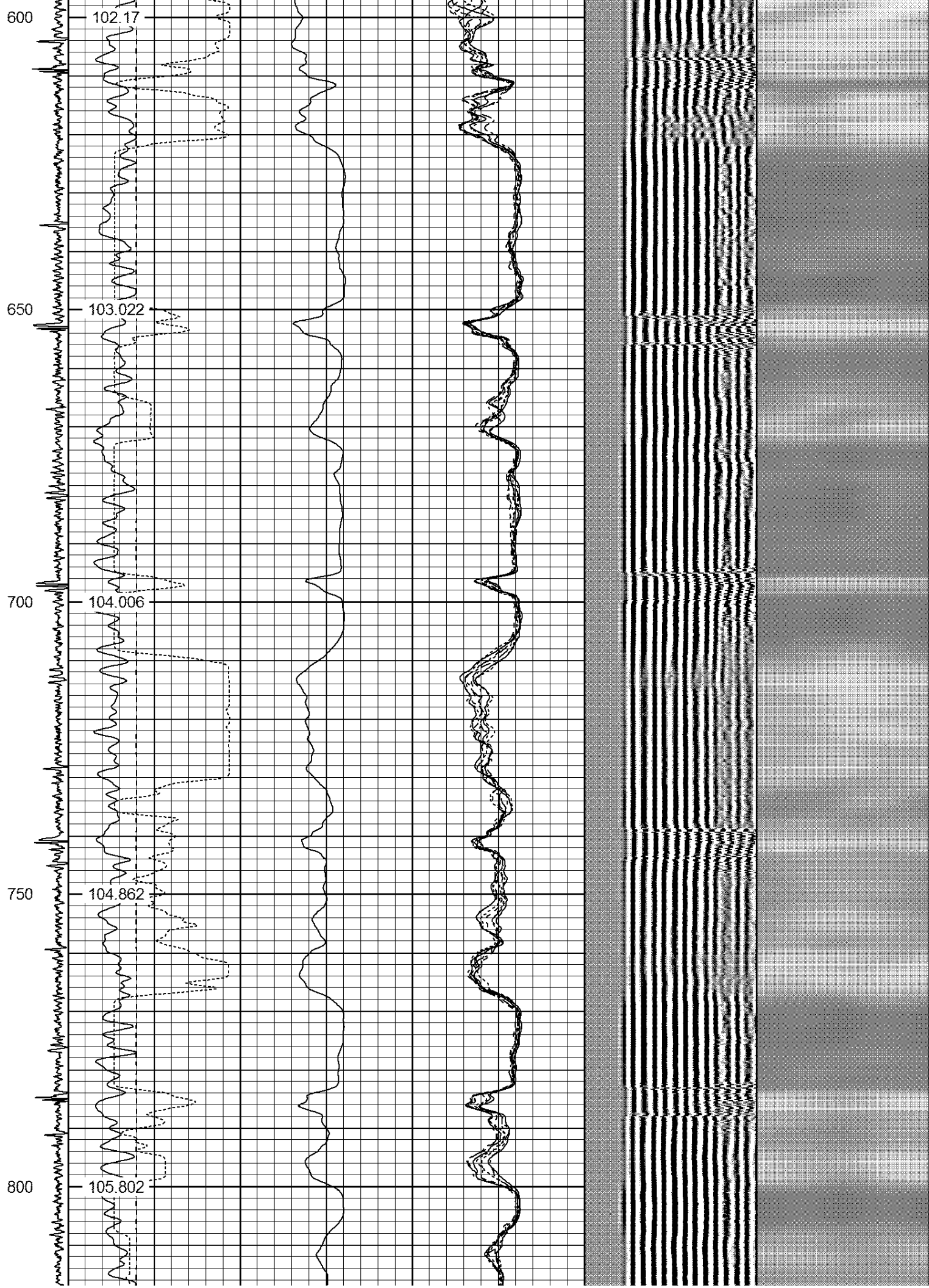
Tool Joint	Tool Joint Length (ft)	Tool Joint Weight (lb)	Tool Joint O.D. (in)	Tool Joint Description	Tool Joint Length (ft)	Tool Joint Weight (lb)	Tool Joint O.D. (in)	Tool Joint Description
HEADVOLT	16.25				PTS275	2.83	2.75	
IntTemp	14.83							
WVFS3FT	11.58				RBT-Probe (Base)	8.92	2.75	90.00
WVFCAL	11.58				Probe Radii Bond Tool with Digital Telemetry			
WVFS1	11.58							
WVFS2	11.58							
WVFS3	11.58							
WVFS4	11.58							
WVFS5	11.58							
WVFS6	11.58							
WVFS7	11.58							
WVFS8	11.58							
WVFS5FT	10.58							
CNLSC	6.00				CNT-Probe_B (275)	3.00	2.75	40.00
CNSSC	5.17				6 bow centralizer			
CCL	3.64							
					GR-Probe (275)	4.33	2.75	30.00
					Probe 2.75"			
GR	0.90							

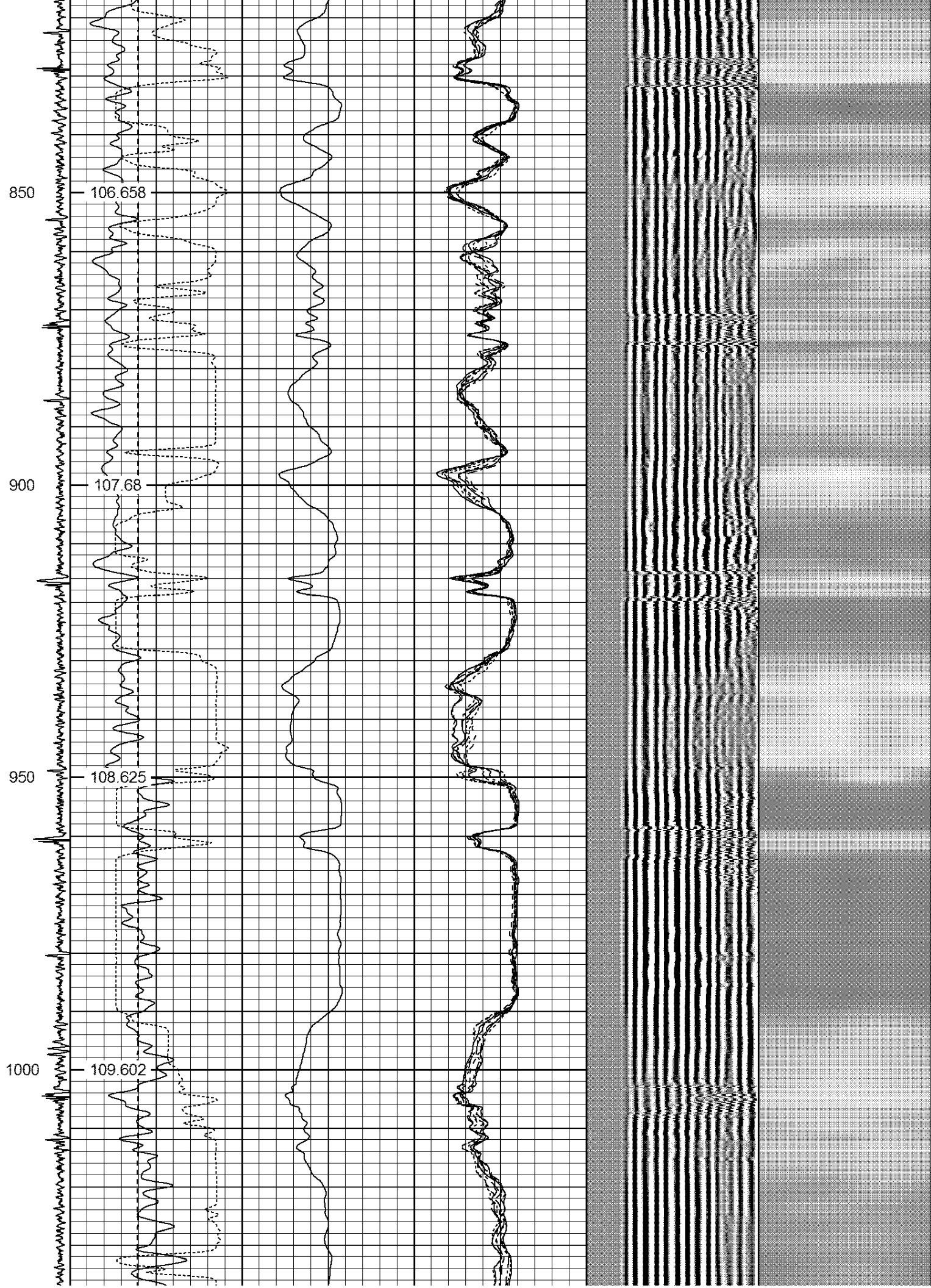
Dataset: greasewood 8-18h-6-61.db: field/well/run1/pass10
Total Length: 19.08 ft
Total Weight: 160.00 lb
O.D. 2.75 in

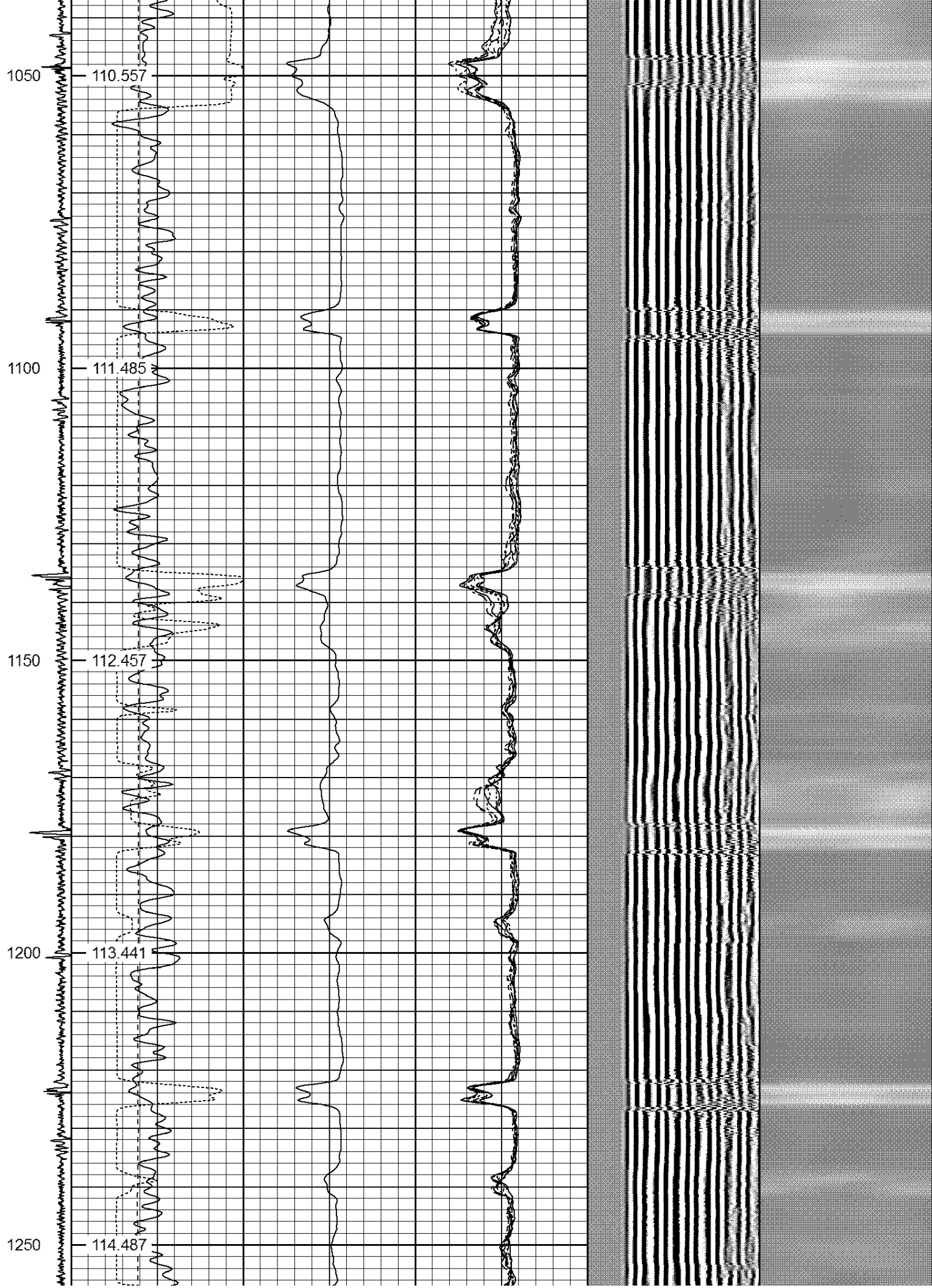
-9	CCL	1	200	TT (usec)	800	0	AMP (mV)	100	0	AMPS1	100	200	VDL	1200	1	Cement Map	8
			0	GR (GAPI)	200	0	AMPx5 (mV)	20	0	AMPS2	100				1		100
			200	GR (GAPI)	400				0	AMPS4	100						
			0	LSPD (ft/min)	250				0	AMPS5	100						
			IntTemp (degF)						0	AMPS6	100						
									0	AMPS7	100						
									0	AMPS8	100						

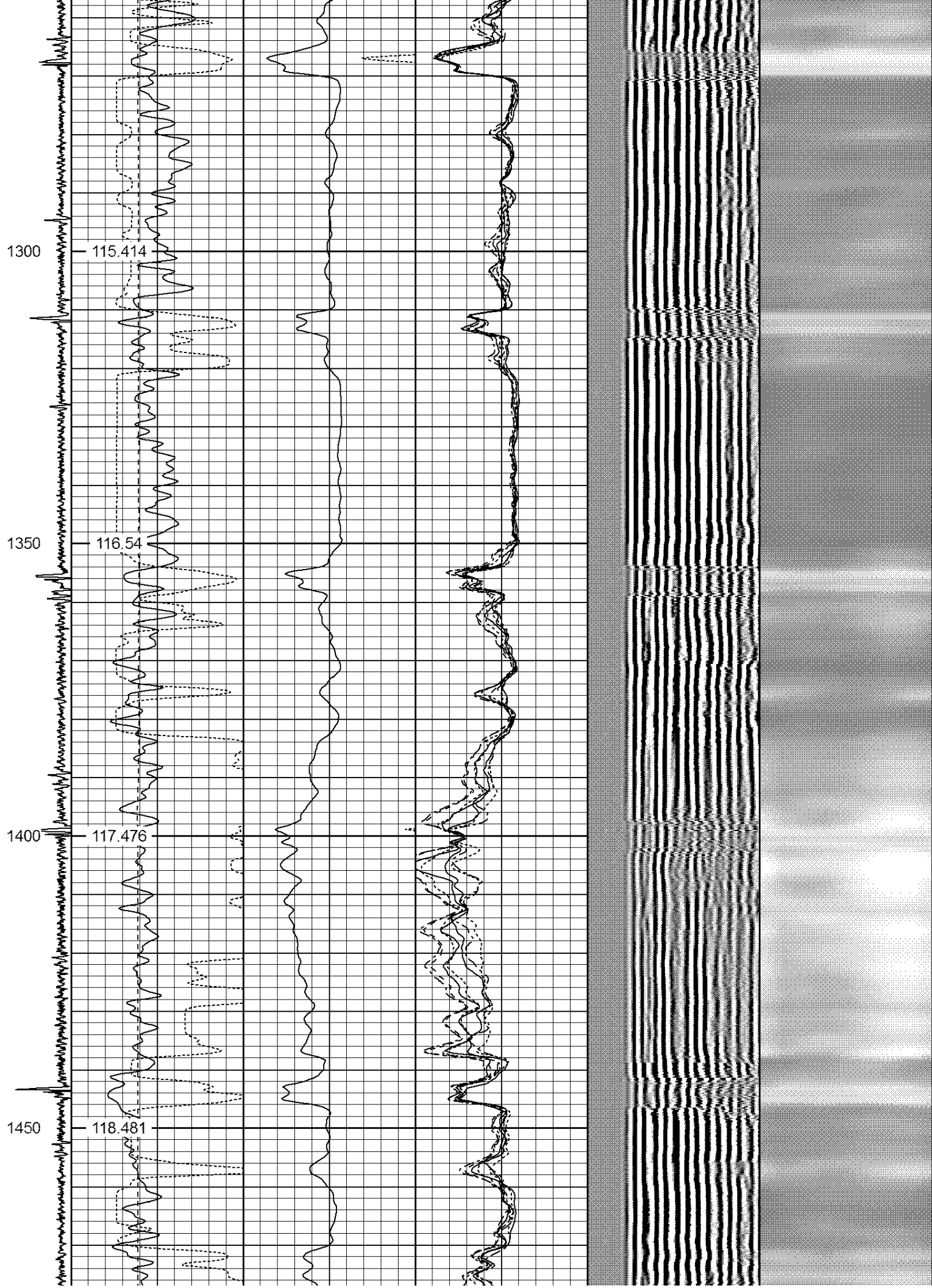


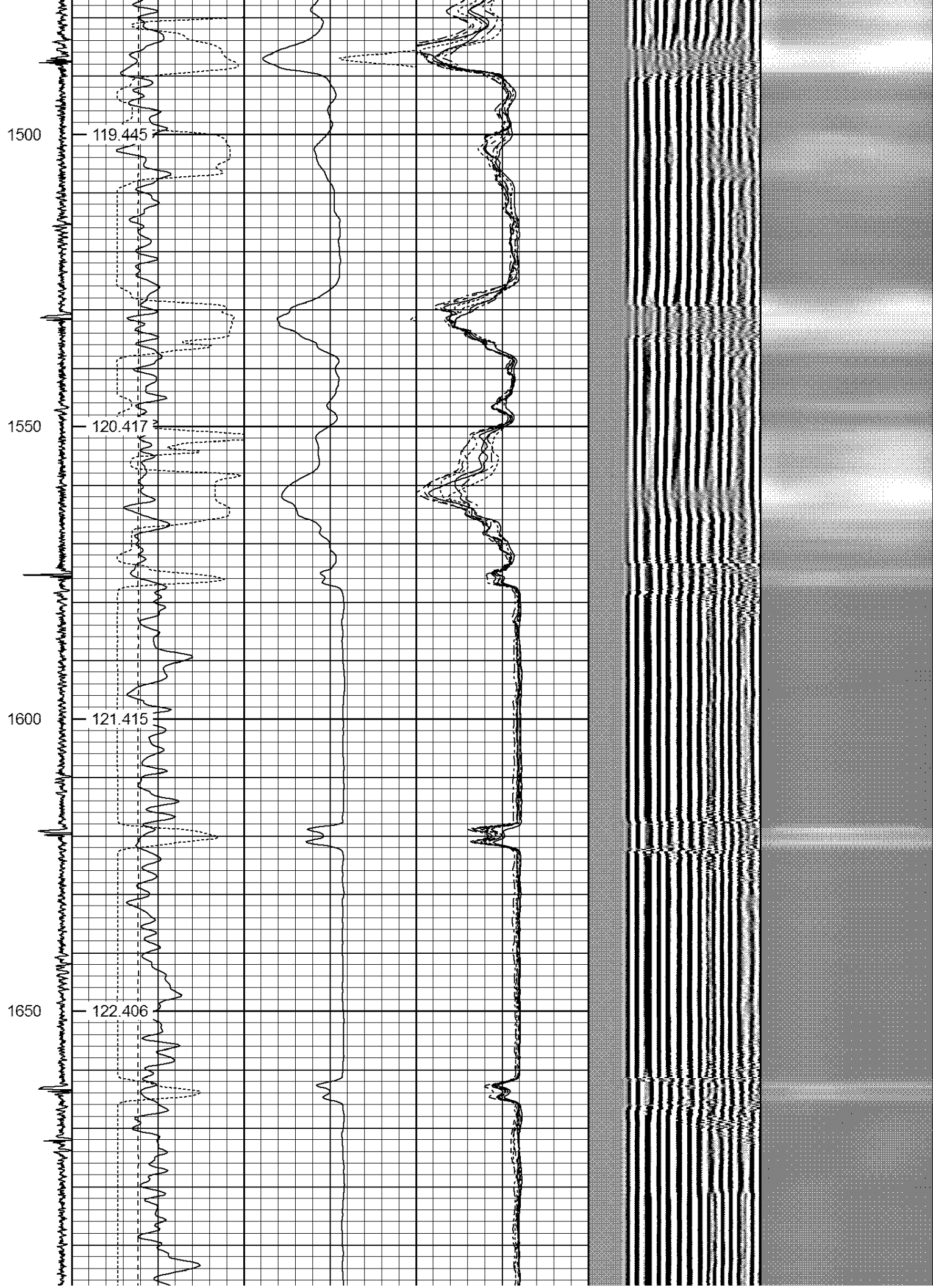


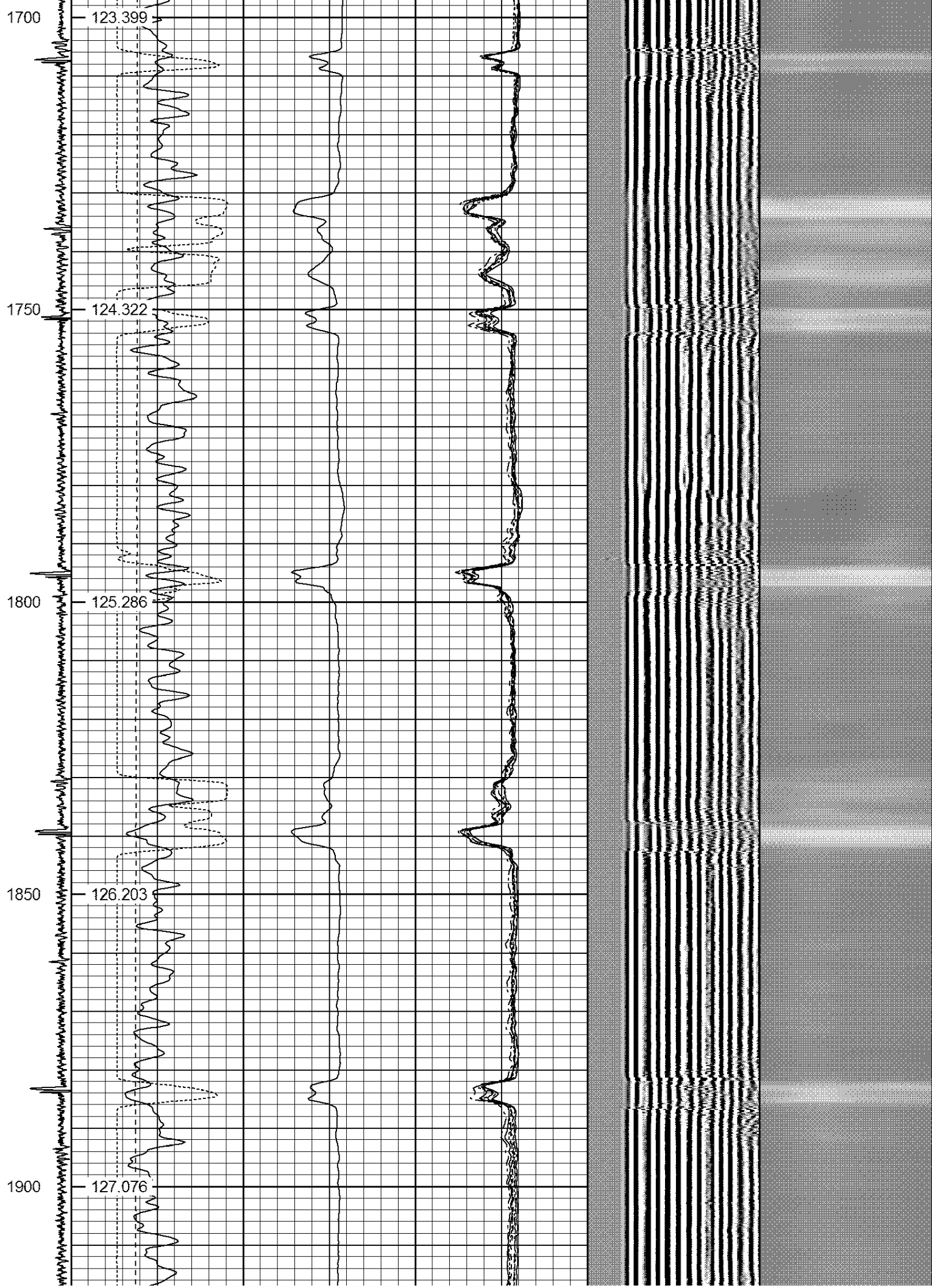


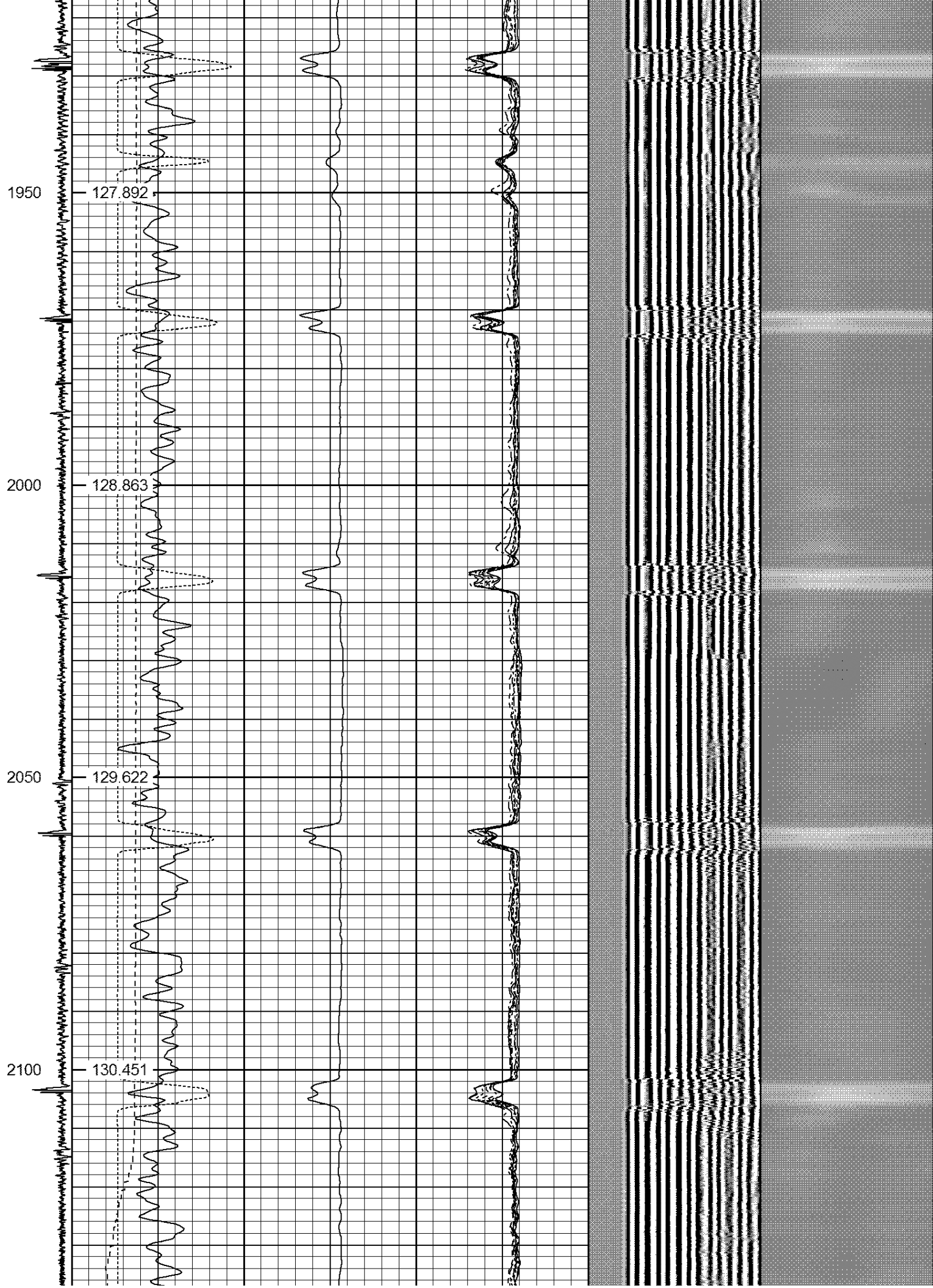




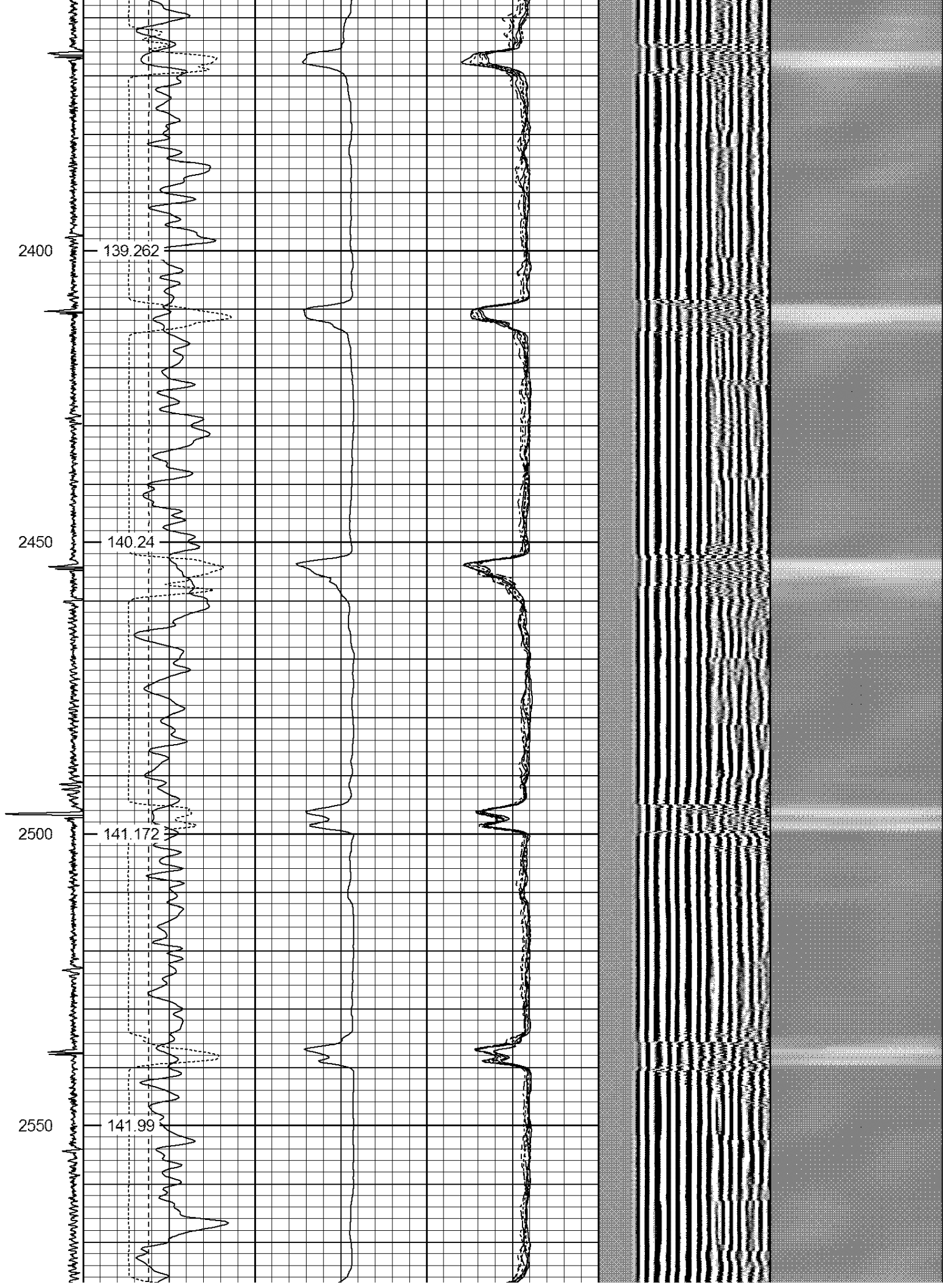




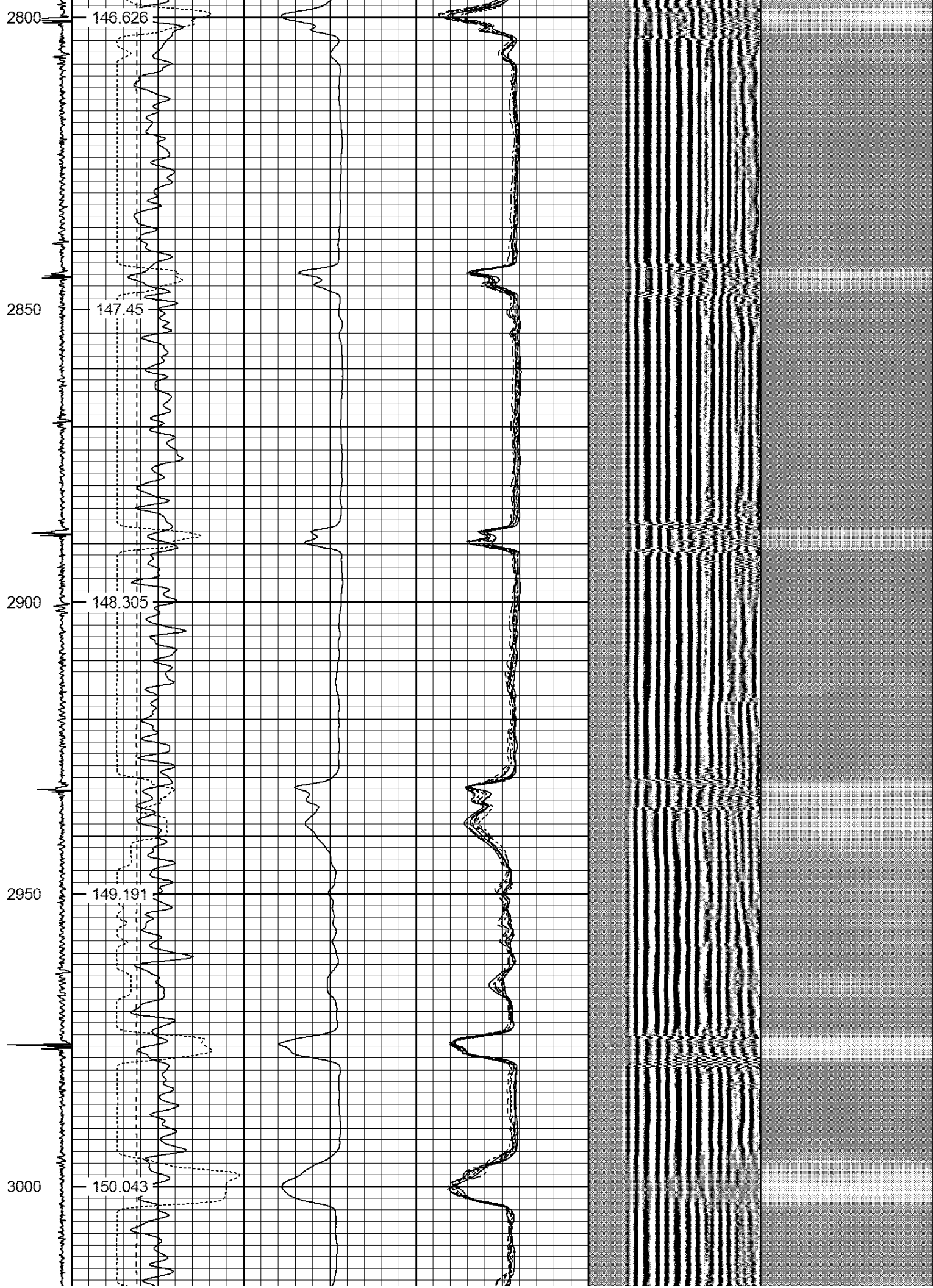


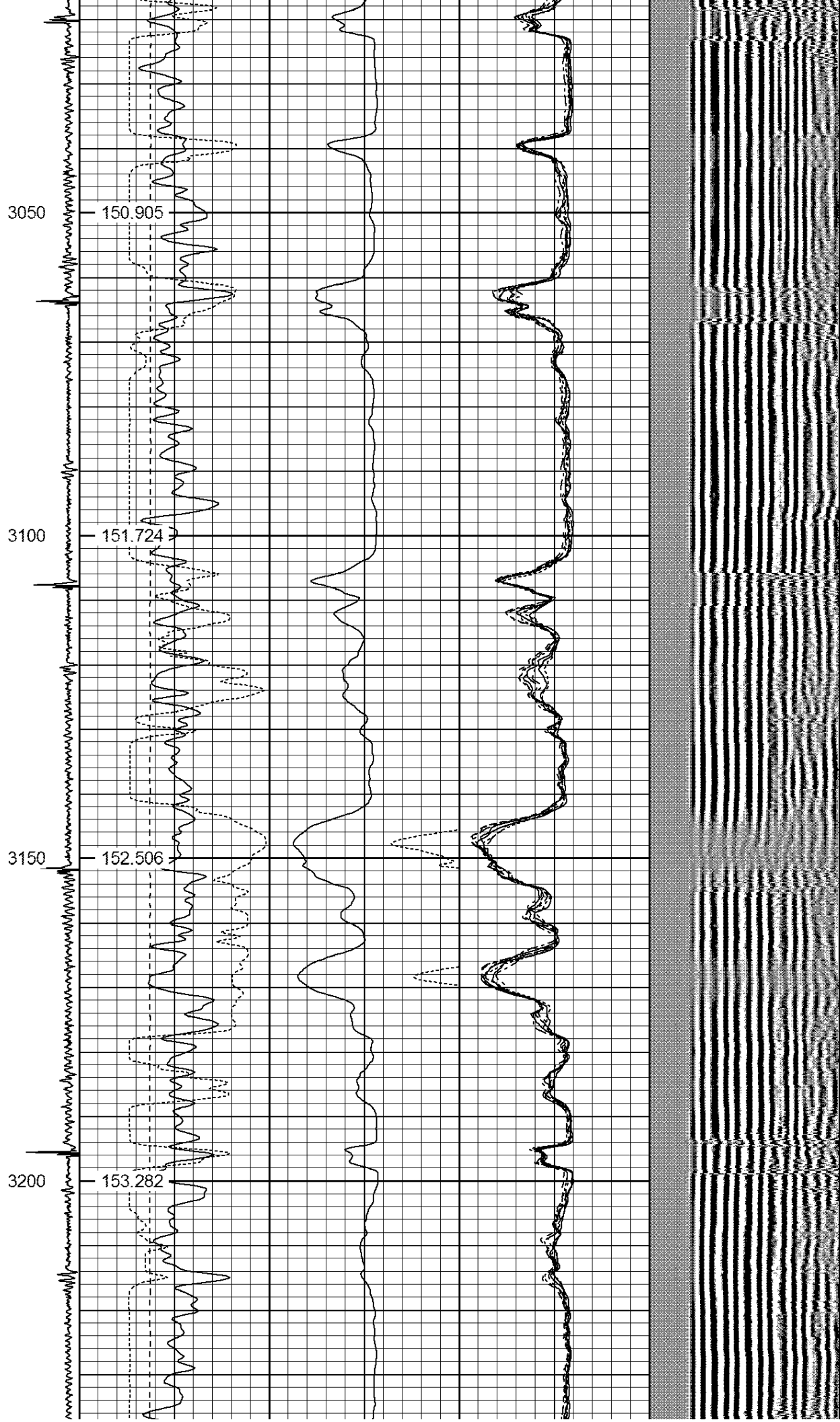




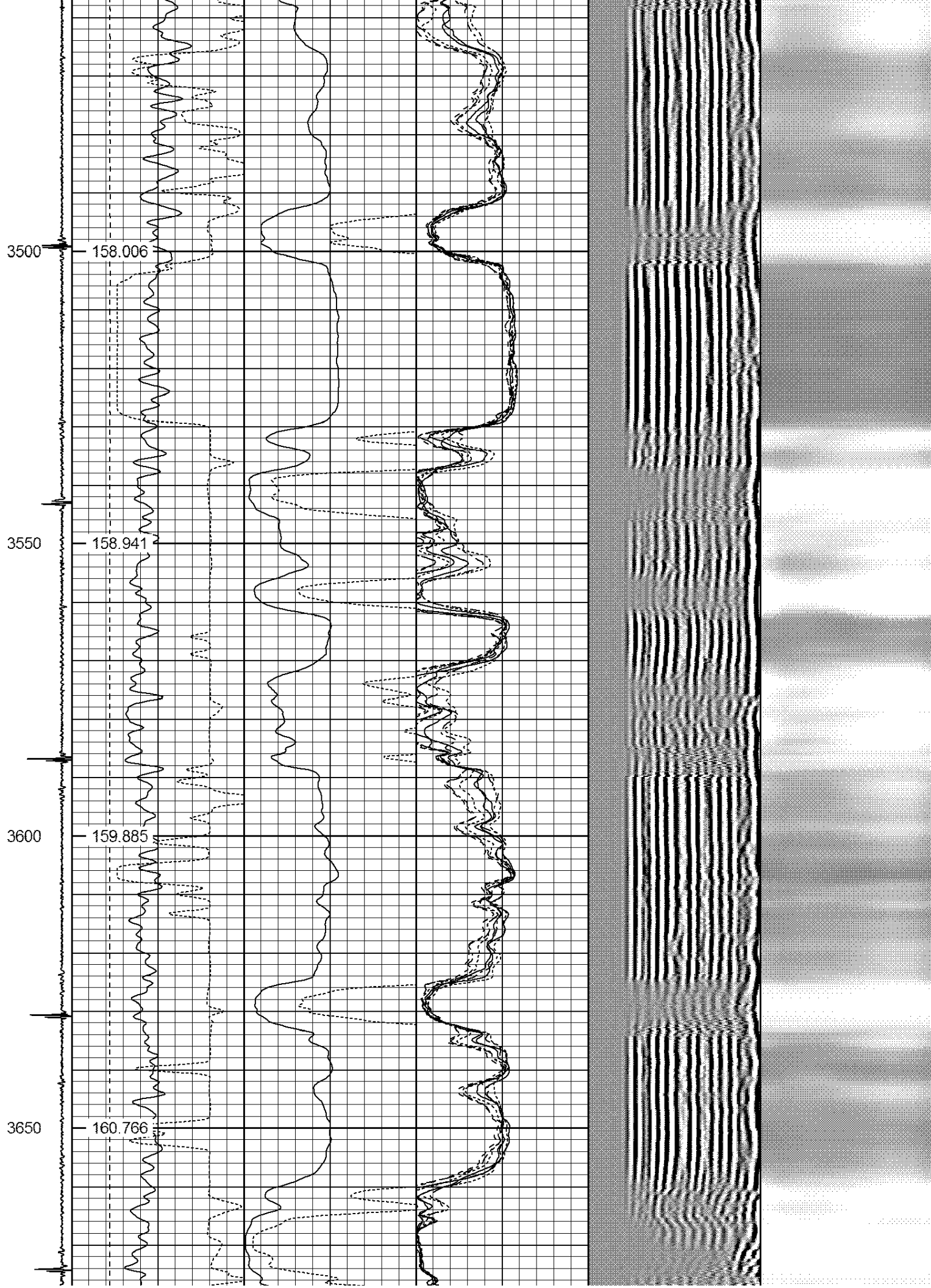












3700

161.82

3750

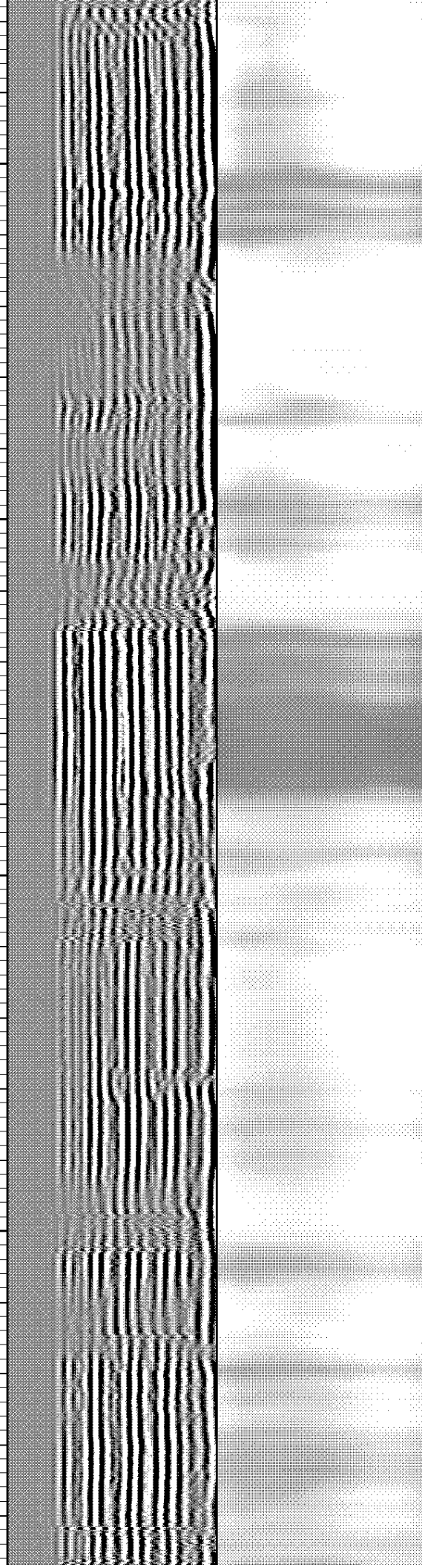
162.84

3800

163.725

3850

164.733



3900

165.805

3950

166.876

4000

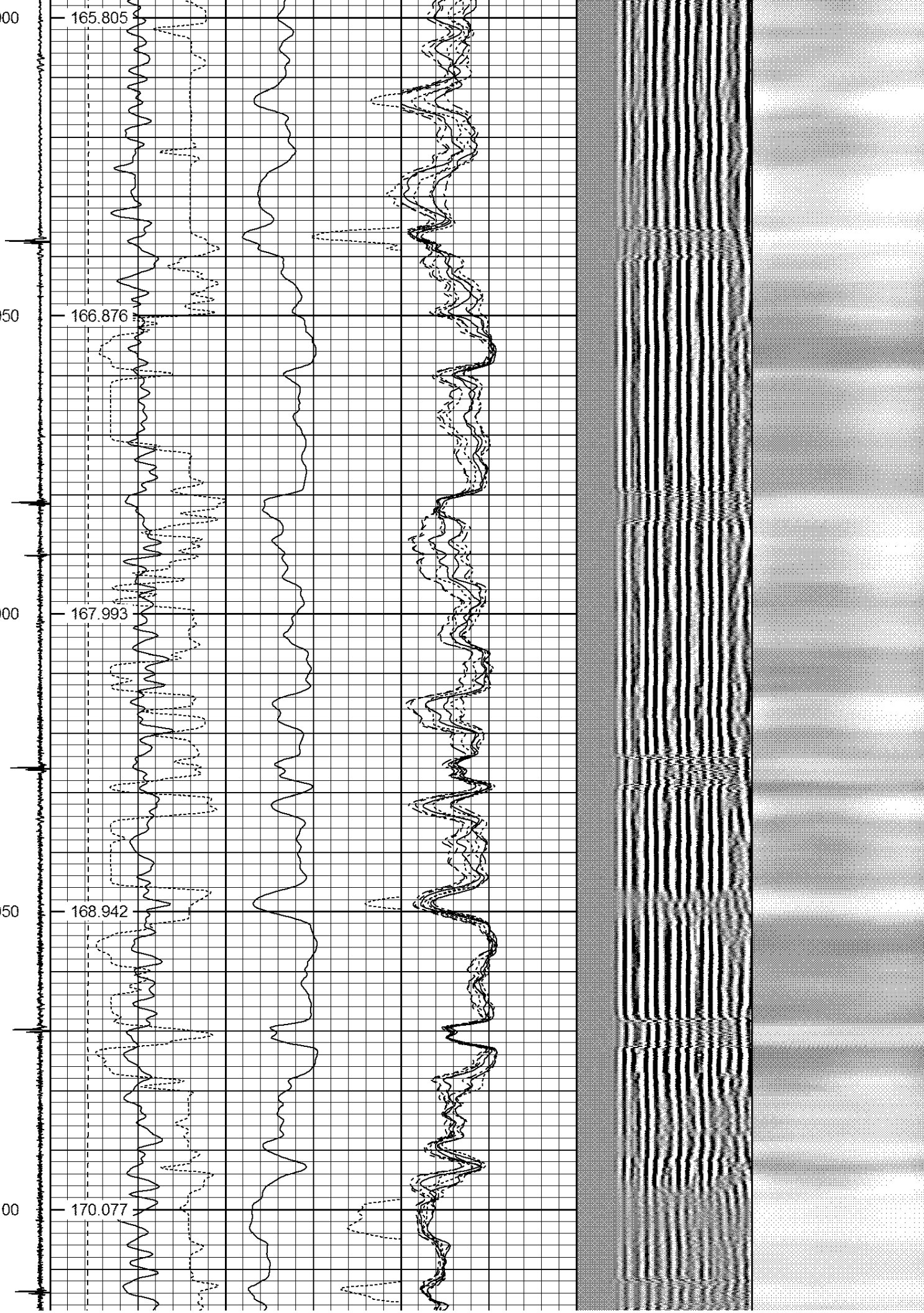
167.993

4050

168.942

4100

170.077



4150

171.623

4200

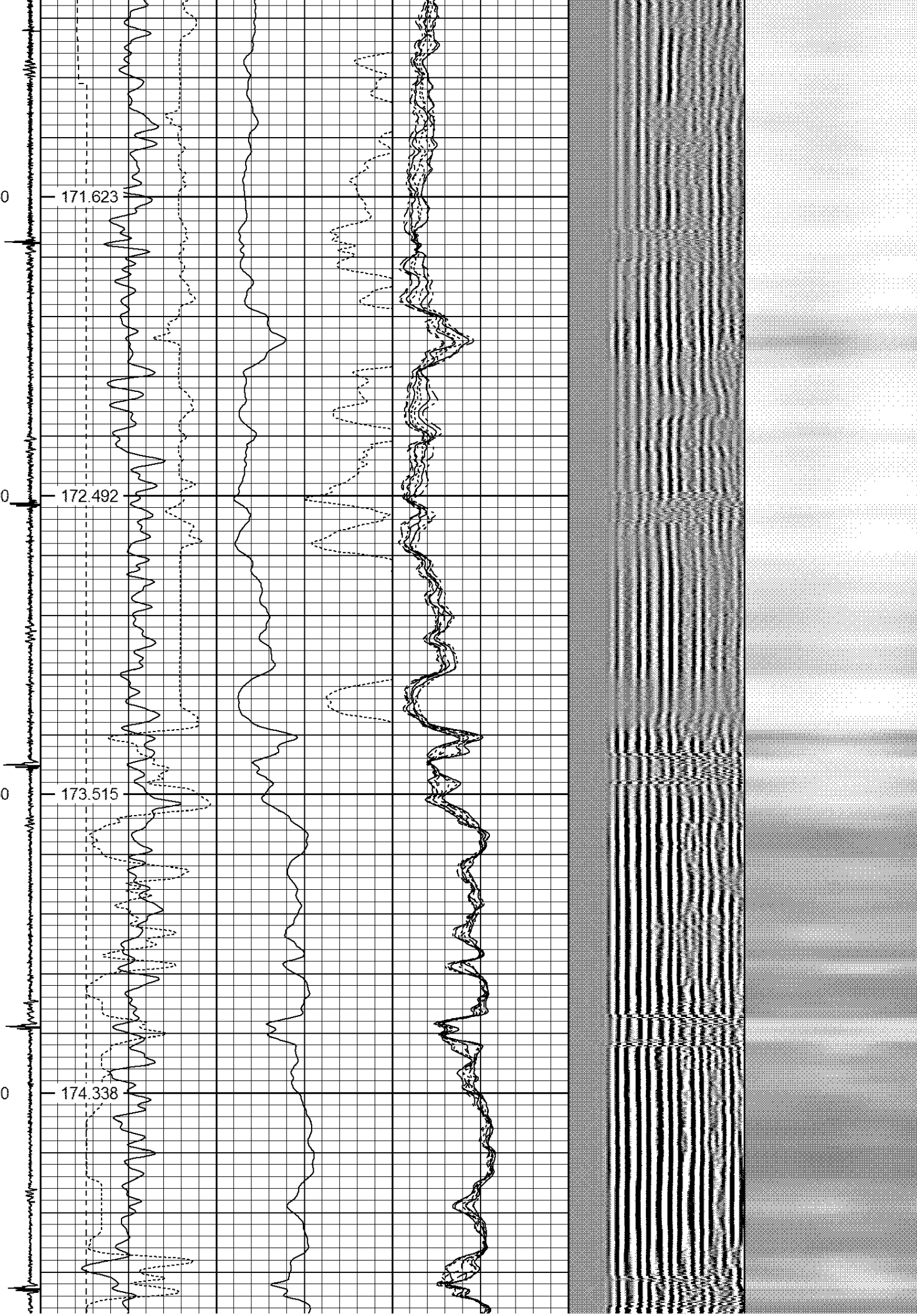
172.492

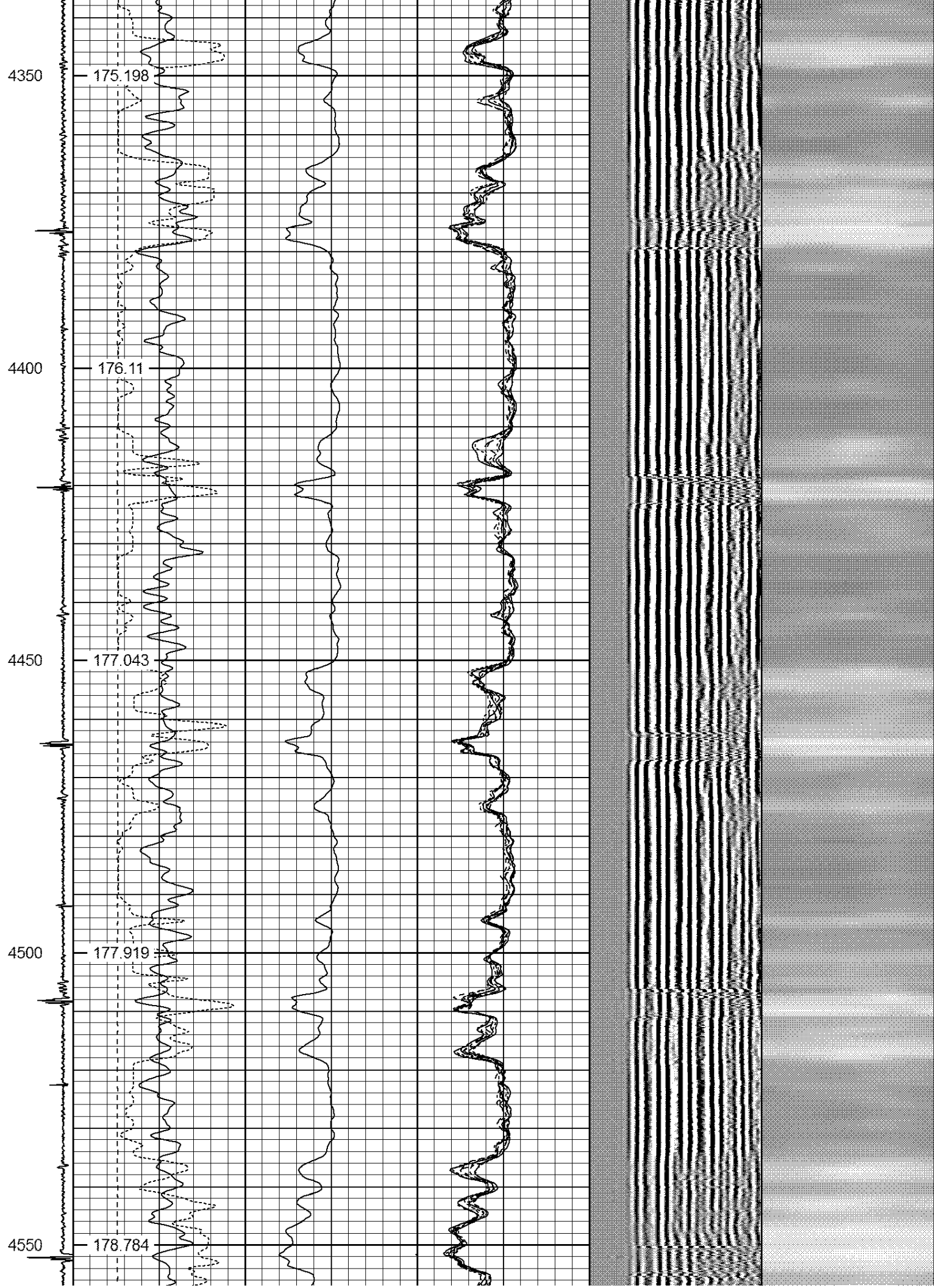
4250

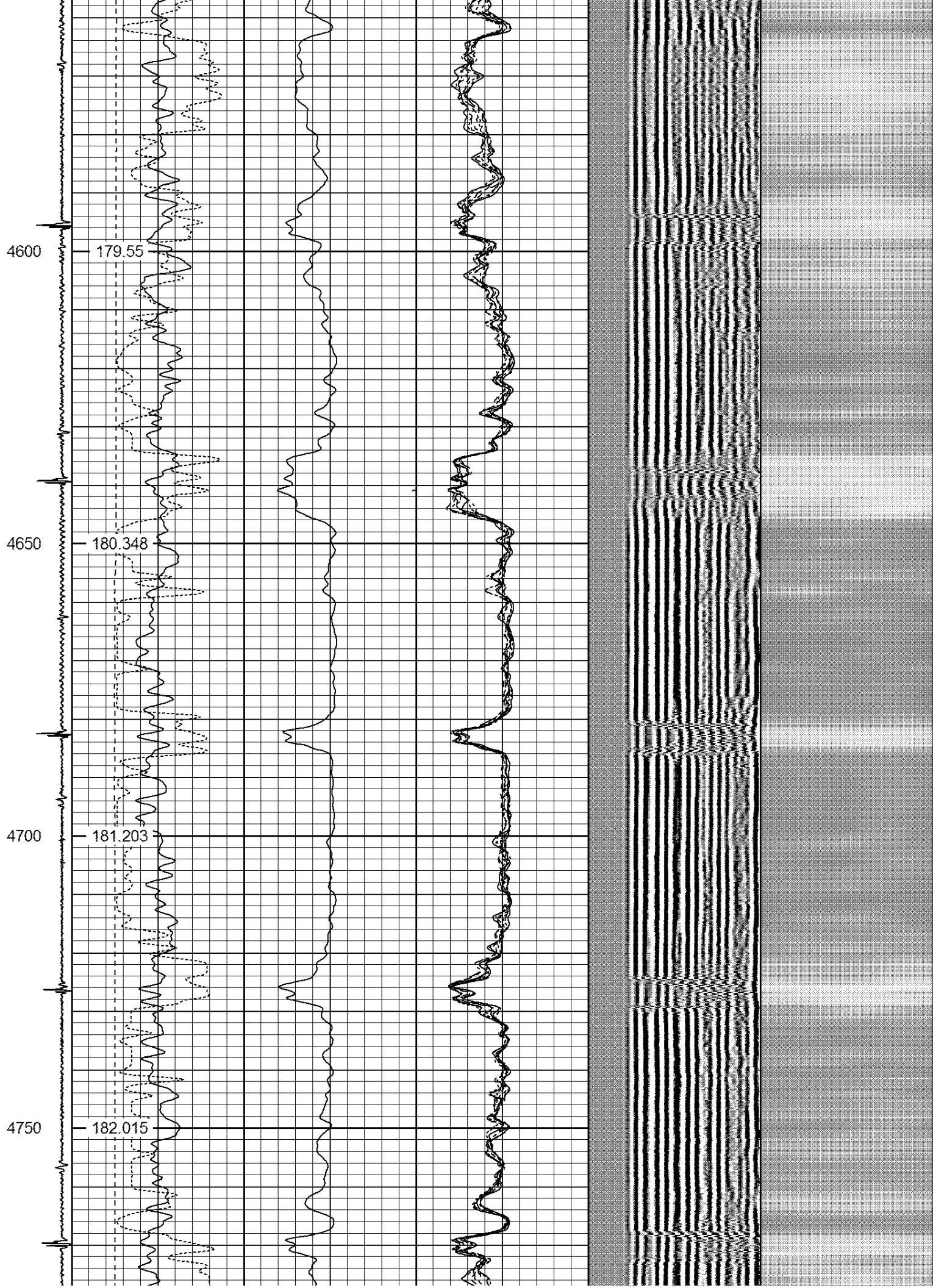
173.515

4300

174.338







4800

182.725

4850

183.534

4900

184.199

4950

184.939



5000

185.71

5050

186.311

5100

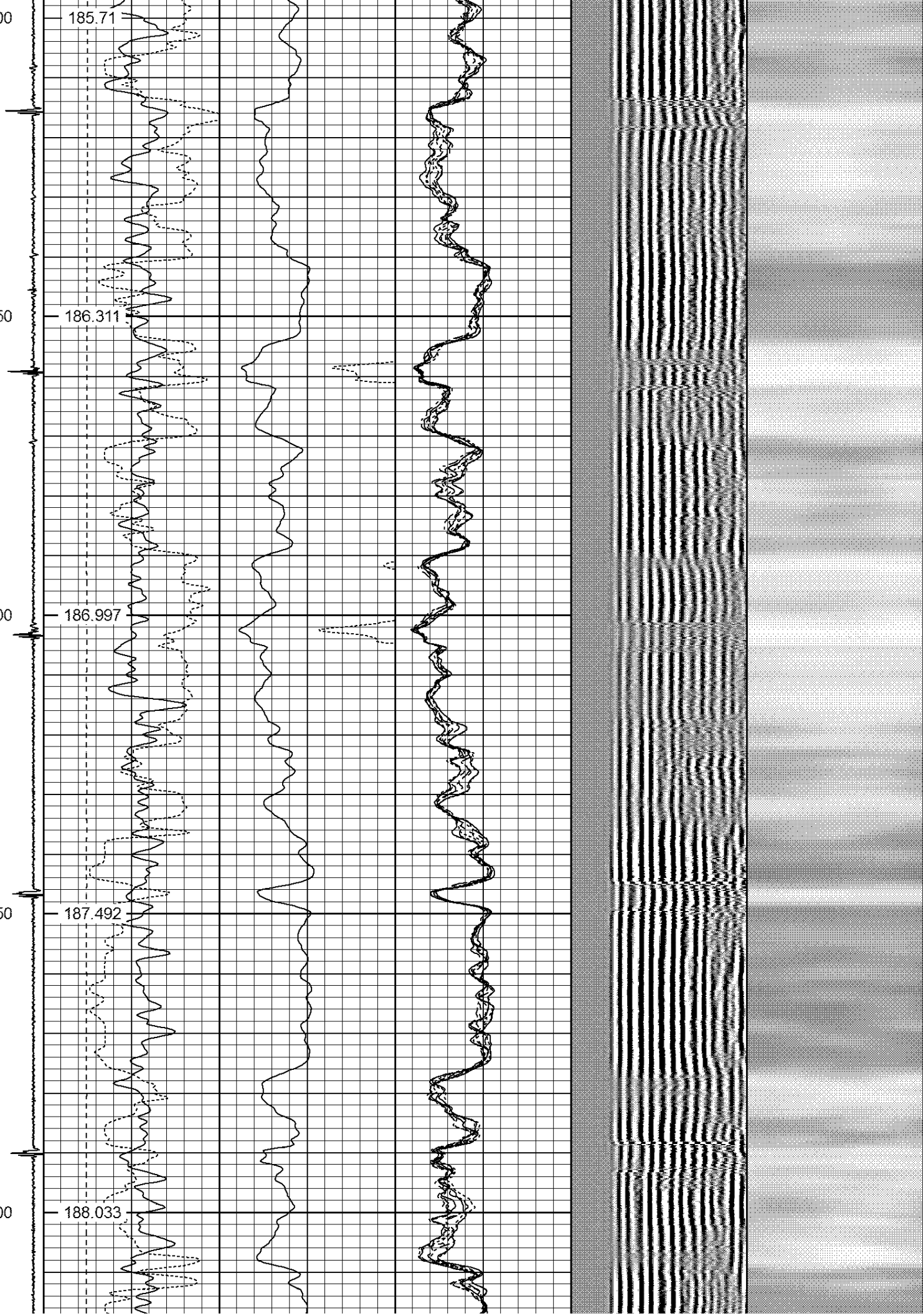
186.997

5150

187.492

5200

188.033



5250

188.343

5300

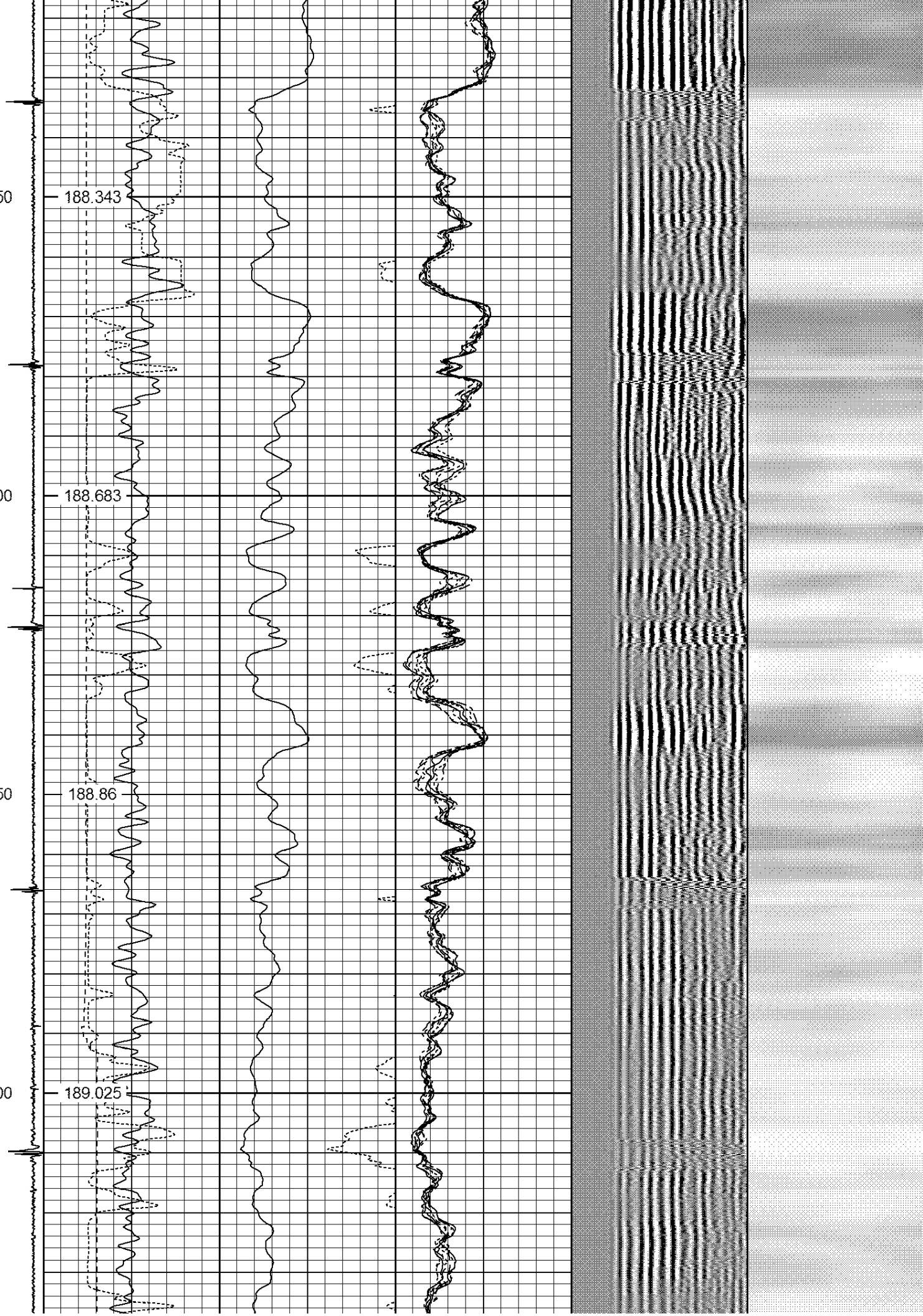
188.683

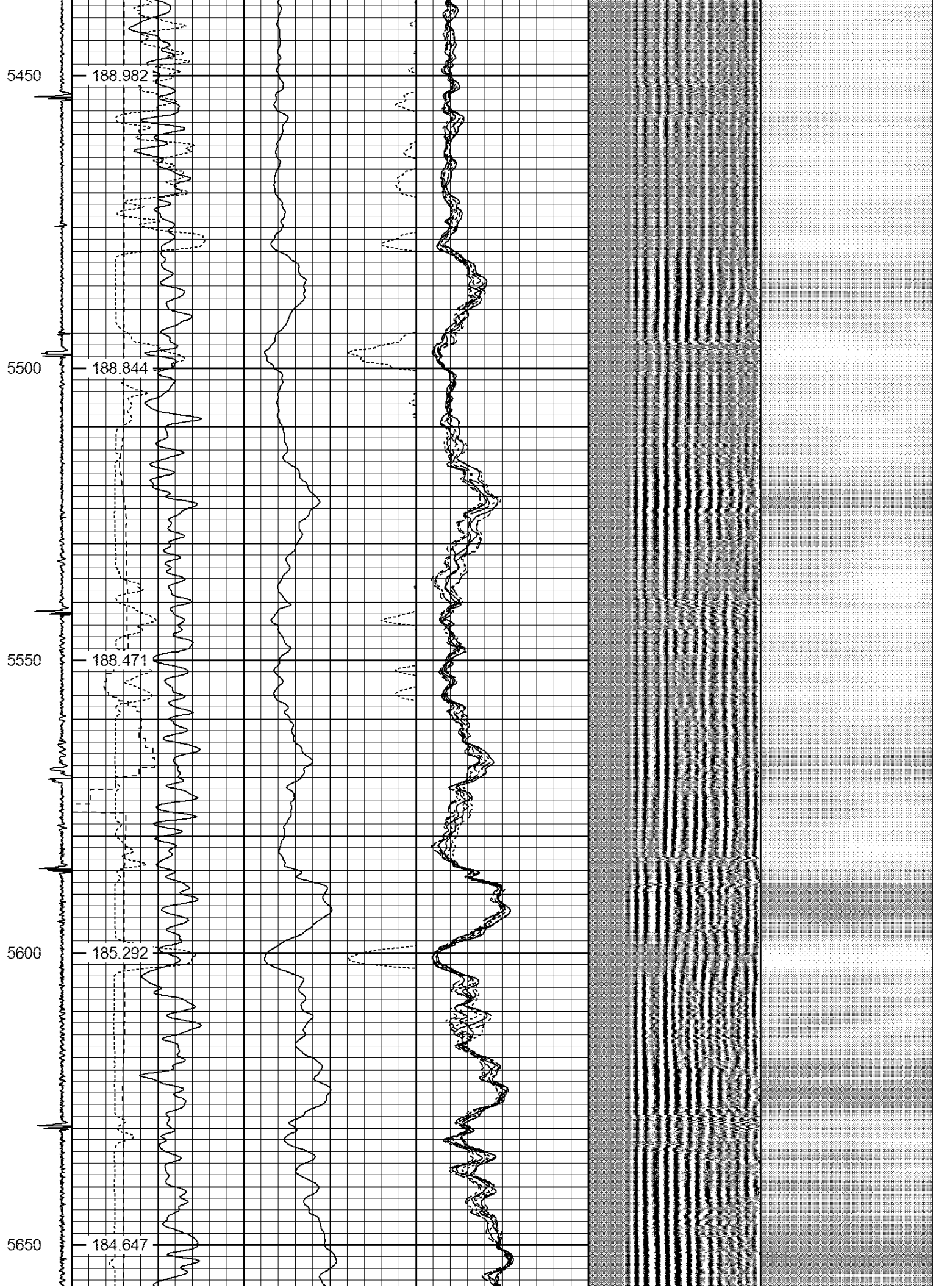
5350

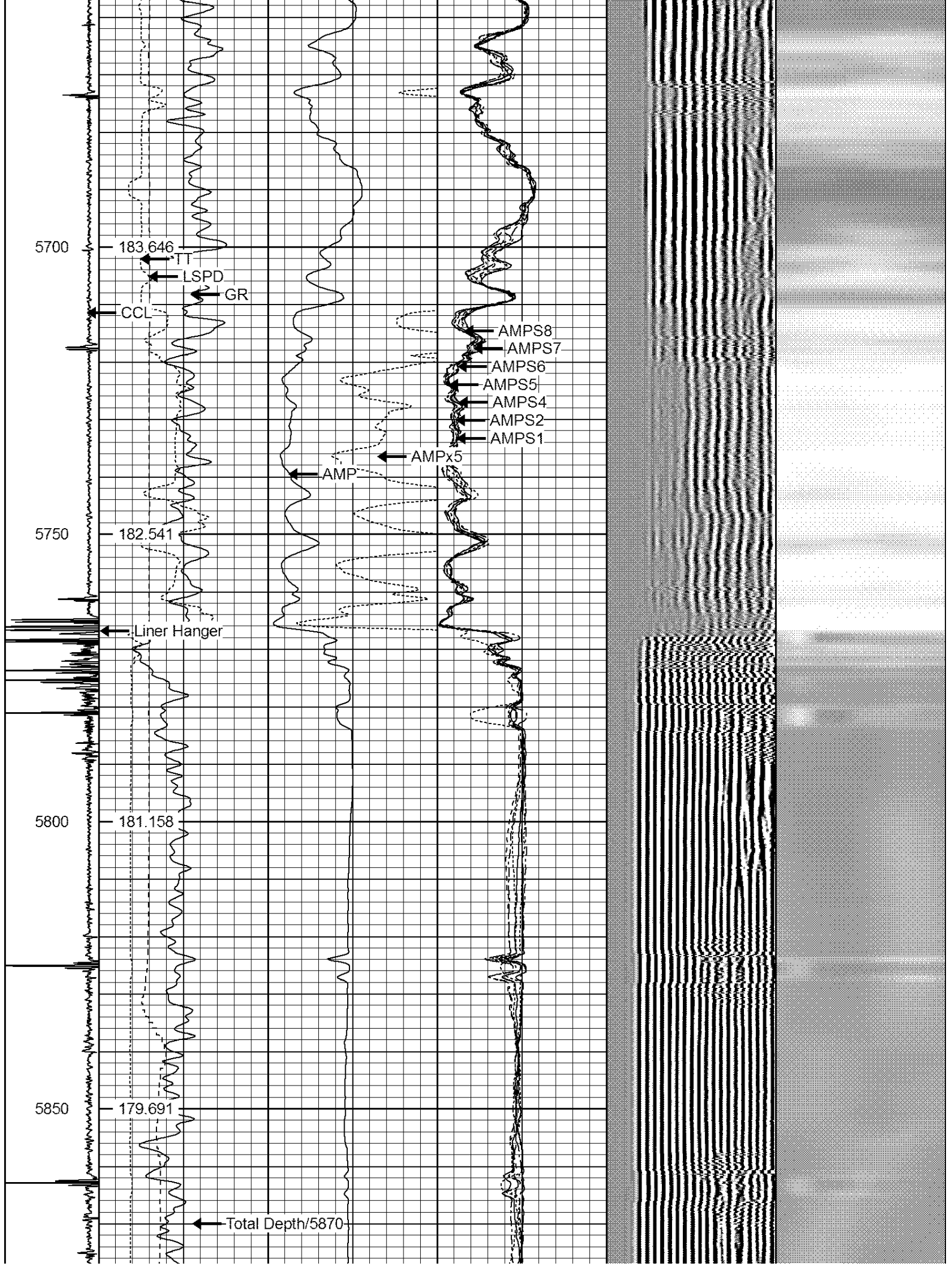
188.86

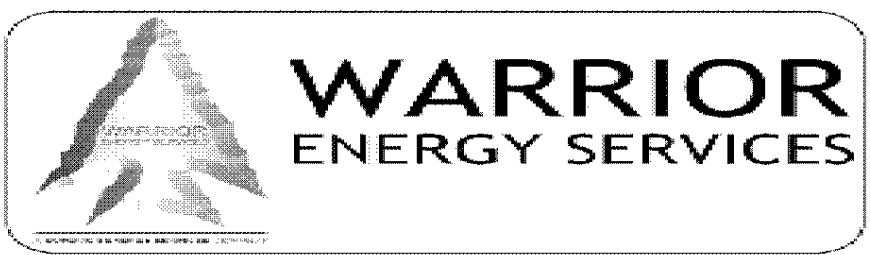
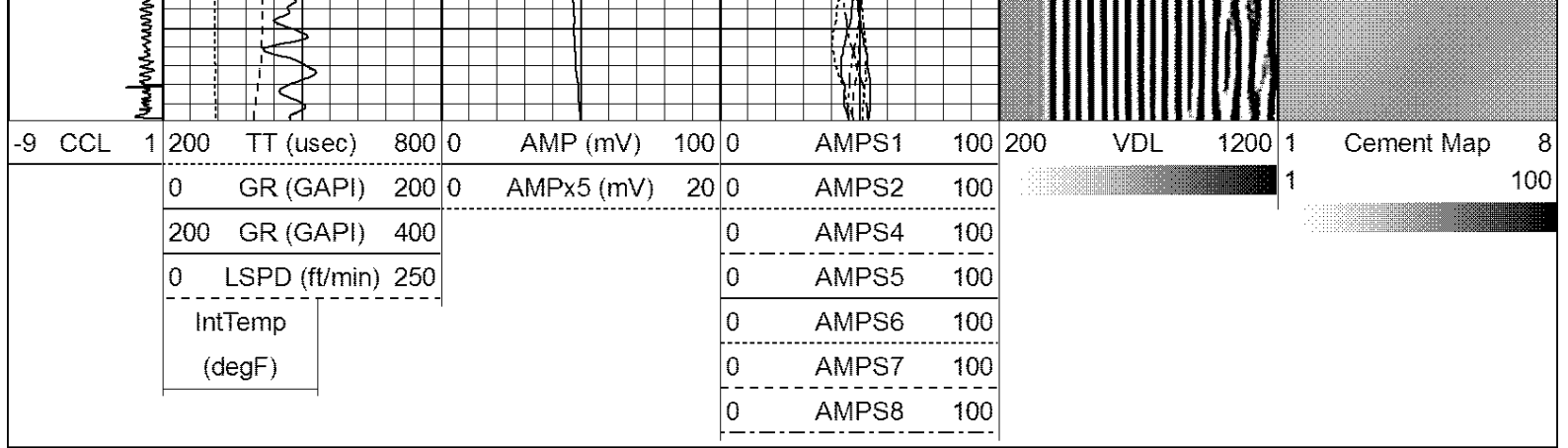
5400

189.025









Company BILL BARRETT CORPORATION
Well GREASEWOOD 8-18H-6-61
Field N.E. WATTENBERG
County WELD
State COLORADO