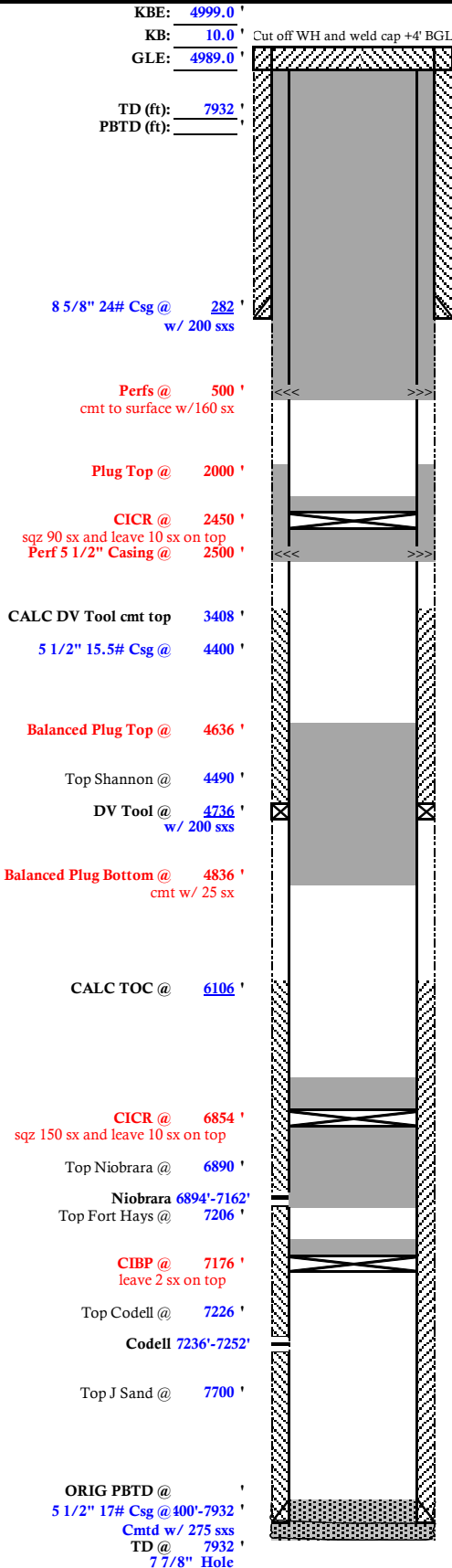


OPERATOR: McWhinney Holding Company LLLP - 55
WELL: Jeffers #2-2
FIELD: Kelim
API # 05-069-06194
LEASE #: -
UIC #: -
BASIN: Denver - Julesburg

CNTY: Larimer
STATE: CO
ROTARY SPUD: 15-Aug-83
COMP: 7-Nov-83
STATUS: SI
WBD DATE: 26-May-20
LAT/LONG: 40.42334, -104.98008

FTG: 660 FSL and 660 FWL
Q-Q: SWSW
SEC.: 2
TWS: 5N
RGE: 68W
BY: RJD
IP GAS: 150
IP OIL: 30
IP WTR: 0
CUM GAS:
CUM OIL:
CUM WTR:
LAST PROD: Mar-20

PROPOSED P&A WELLBORE DIAGRAM



CASING HEAD: <u>Unknown</u>						
WELLHEAD: <u>Unknown</u>						
CASING RECORD						
HOLE (in)	SIZE (in)	WT (lb/ft)	GRADE	TOP (ft)	BTM (ft)	JTS
12 1/4	8 5/8	24		0	282	
7 7/8	5 1/2	15.5		0	4400	
7 7/8	5 1/2	15.5		4,400	7932	
S.C. 1.1					4736	
Float Collar @						

TUBING RECORD		COND:	DATE:		
SIZE (in)	WT (lb/ft)	GRADE	TOP (ft)	TALLY (ft)	JTS
PR					
PONY					
RODS					
HOOKS					
RODS					
PUMP					

ITEM	DESC	SIZE (in)	TALLY (ft)	JTS
K.B.				
TBG				
TAC				
TBG				
SN PN, MA				
EOT @				

PERFORATION RECORD						
ZONE	TOP (ft)	BTM (ft)	SPF	DATE SHOT	STATUS	STIM
Niobrara	6894	6900	2			300,000 lbs 20/40 sand;
	6430	6436	2			2,000 bbls gelled water;
	6950	6956	2			1400 bbls CO2
	7010	7016	2			
	7122	7128	2			
	7158	7162	2			
Codell	7236	7244	2			
	7246	7252	2			

WELLWORK HISTORY

