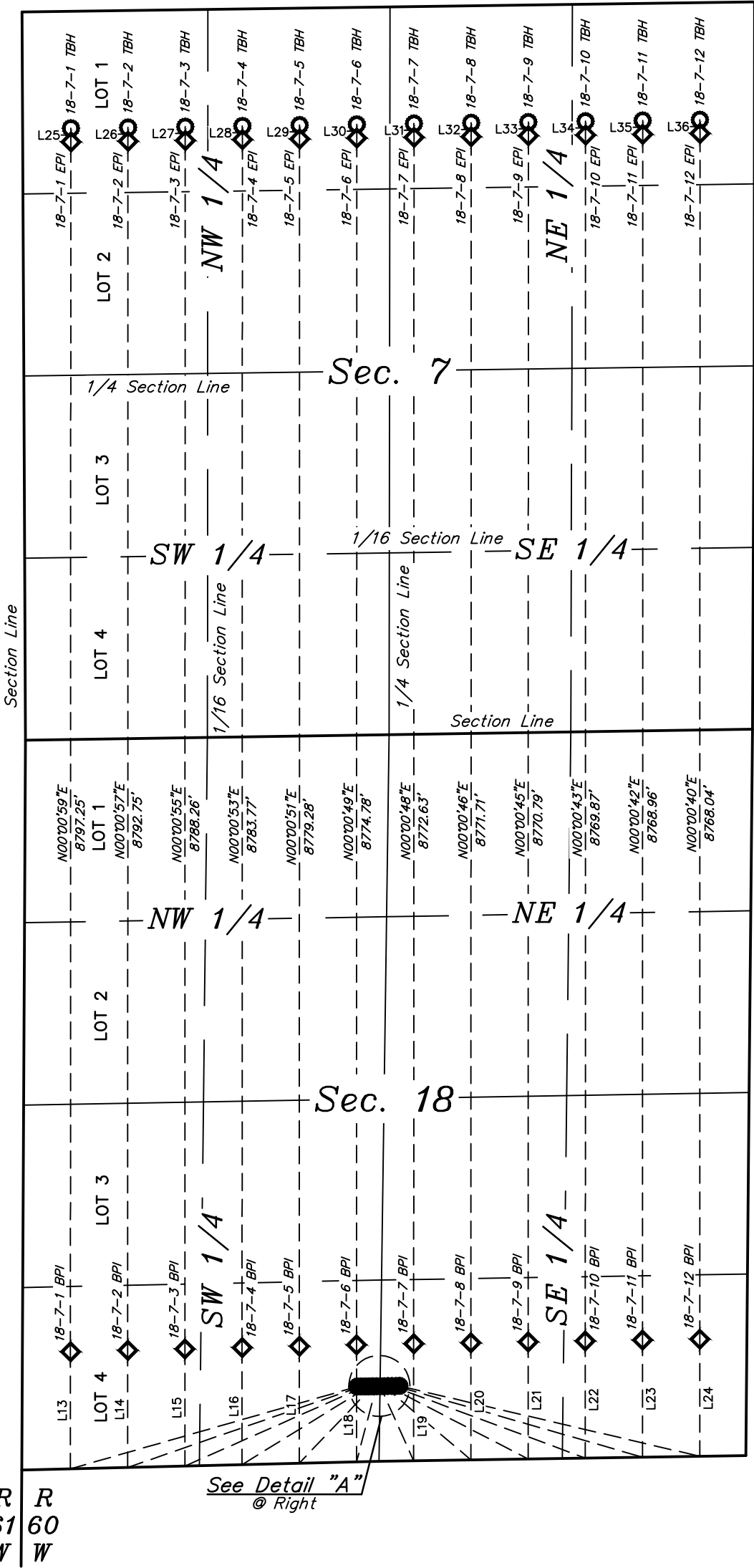


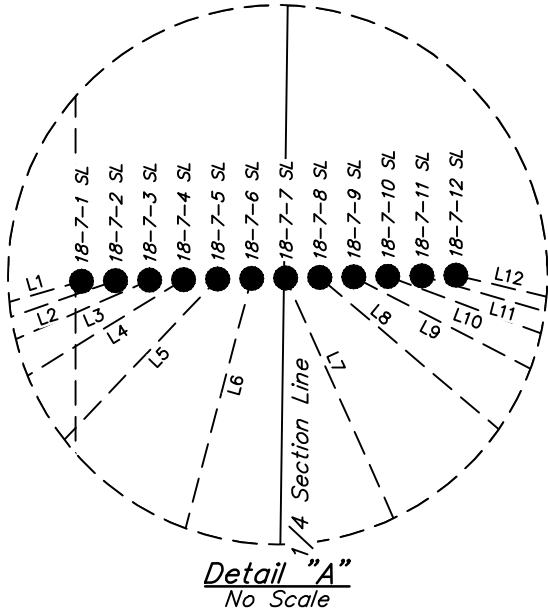


LEGEND:

- = SURFACE LOCATION.
- ◆ = PRODUCTION INTERVAL.
- = TARGET BOTTOM HOLE.
- SL = SURFACE LOCATION.
- BPI = BEG. PROD. INTERVAL.
- EPI = ENDING PROD. INTERVAL.
- TBH = TARGET BOTTOM HOLE.



LINE TABLE		
LINE	DIRECTION	LENGTH
L1	S74°00'41"W	2169.21'
L2	S70°53'56"W	1796.12'
L3	S66°10'40"W	1431.08'
L4	S58°19'39"W	1082.28'
L5	S43°39'41"W	772.04'
L6	S14°47'43"W	567.60'
L7	S24°11'16"E	593.35'
L8	S49°42'13"E	827.52'
L9	S62°33'50"E	1148.38'
L10	S69°36'38"E	1501.33'
L11	S73°56'07"E	1868.27'
L12	S76°49'45"E	2242.35'
L13	N00°00'59"E	850.26'
L14	N00°00'57"E	850.26'
L15	N00°00'55"E	850.26'
L16	N00°00'53"E	850.26'
L17	N00°00'51"E	850.26'
L18	N00°00'49"E	850.26'
L19	N00°00'48"E	850.11'
L20	N00°00'46"E	850.11'
L21	N00°00'45"E	850.11'
L22	N00°00'43"E	850.11'
L23	N00°00'42"E	850.11'
L24	N00°00'40"E	850.11'
L25	N00°16'41"W	100.00'
L26	N00°16'41"W	100.00'
L27	N00°16'41"W	100.00'
L28	N00°16'41"W	100.00'
L29	N00°16'41"W	100.00'
L30	N00°16'41"W	100.00'
L31	N00°16'41"W	100.00'
L32	N00°16'41"W	100.00'
L33	N00°16'41"W	100.00'
L34	N00°16'41"W	100.00'
L35	N00°16'41"W	100.00'
L36	N00°16'41"W	100.00'



BISON OIL & GAS II

ROSS 8-60 18 PAD  
SE 1/4 SW 1/4 & SW 1/4 SE 1/4,  
SECTION 18, T8N, R60W, 6th P.M.  
WELD COUNTY, COLORADO

SURVEYED BY	CHAD MEIERS, O.R.	02-25-20	SCALE
DRAWN BY	C.IVIE	05-07-20	1" = 1000'

MULTI-WELL PLAN



UELS, LLC  
Corporate Office \* 85 South 200 East  
Vernal, UT 84078 \* (435) 789-1017