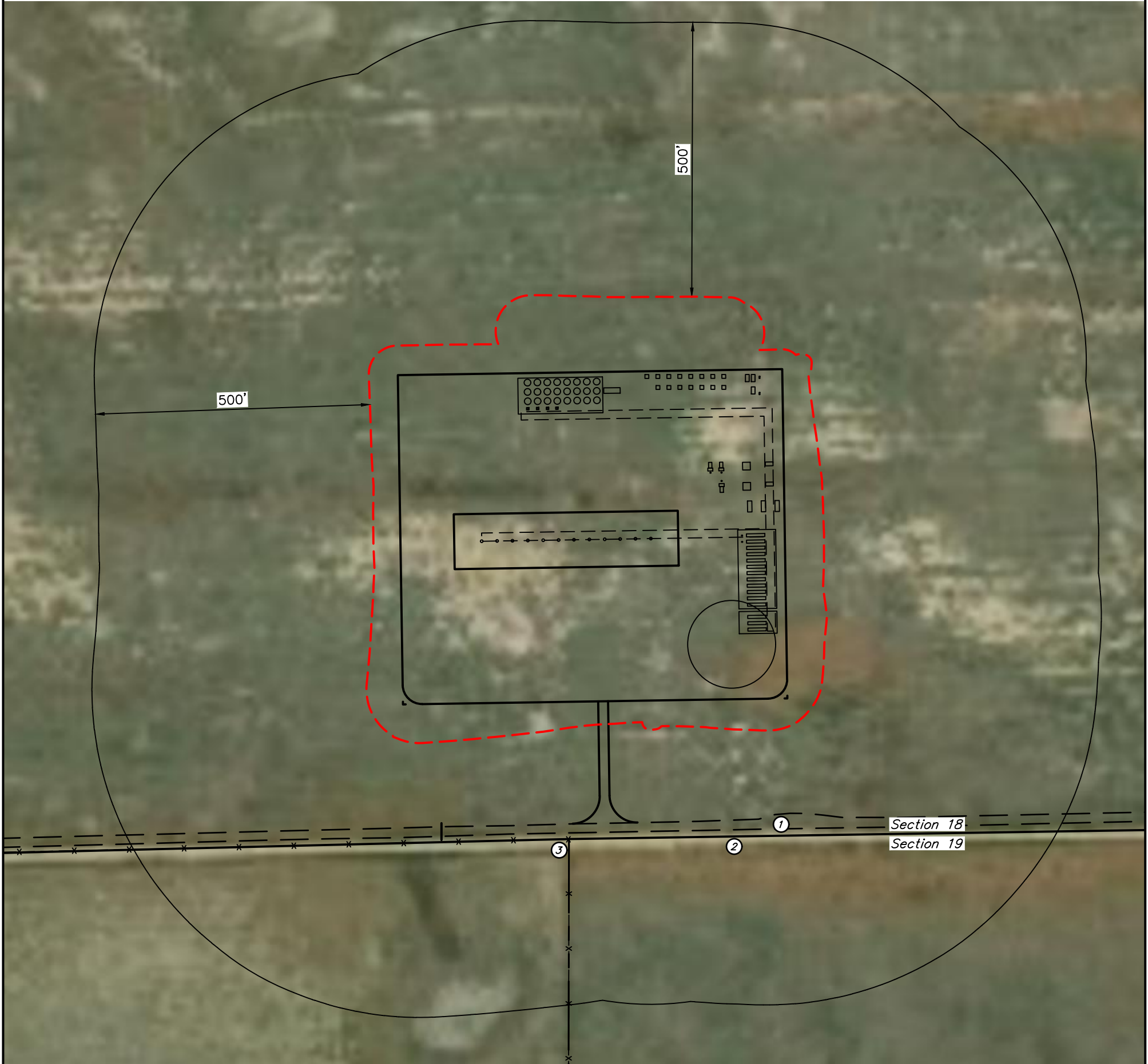




CULTURAL DISTANCES	FROM NEAREST WELL	FROM NEAREST PRODUCTION FACILITY
BUILDING	5280'+	5280'+
BUILDING UNIT	5280'+	5280'+
HIGH OCCU. BUILDING	5280'+	5280'+
D.O.A.A.	5280'+	5280'+
PUBLIC ROAD	5280'+	5280'+
ABOVE GROUND UTILITY	5280'+	5280'+
RAILROAD	5280'+	5280'+
PROPERTY LINE	SOUTH 545'	SOUTH 374'
CHILD CARE FACILITY	5280'+	5280'+
SCHOOL FACILITY	5280'+	5280'+
SCHOOL PROPERTY LINE	5280'+	5280'+



LEGEND

- - - - - = OIL & GAS LOCATION
- - - - - = PROPERTY LINE
- x-x-x-x- = FENCE

#	FEATURE	BEARING	DISTANCE
1	ROAD	SE	240'
2	PROPERTY LINE	SOUTH	270'
3	FENCE/PROPERTY LINE	SW	382'

Plant Community: Native Grassland
 Current Land Use: Range Land
 Future Land Use: Range Land

REV: 1 05-28-20 C.C. (UPDATED DISTURBANCE AREA)

- NOTES:**
- Bearings & distances shown are from the nearest oil & gas facility.
 - No building units within 2000 feet of proposed oil & gas location.

BISON OIL & GAS II

ROSS 8-60 18 PAD
 SE 1/4 SW 1/4 & SW 1/4 SE 1/4,
 SECTION 18, T8N, R60W, 6th P.M.
 WELD COUNTY, COLORADO

SURVEYED BY	CHAD MEIERS, O.R.	02-25-20	SCALE
DRAWN BY	C.IVIE	05-07-20	1" = 200'

LOCATION DRAWING



UELS, LLC
 Corporate Office * 85 South 200 East
 Vernal, UT 84078 * (435) 789-1017