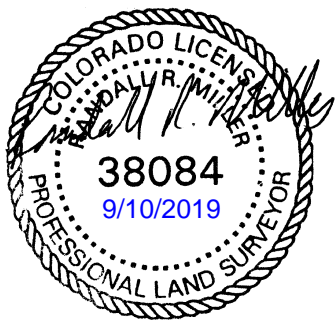
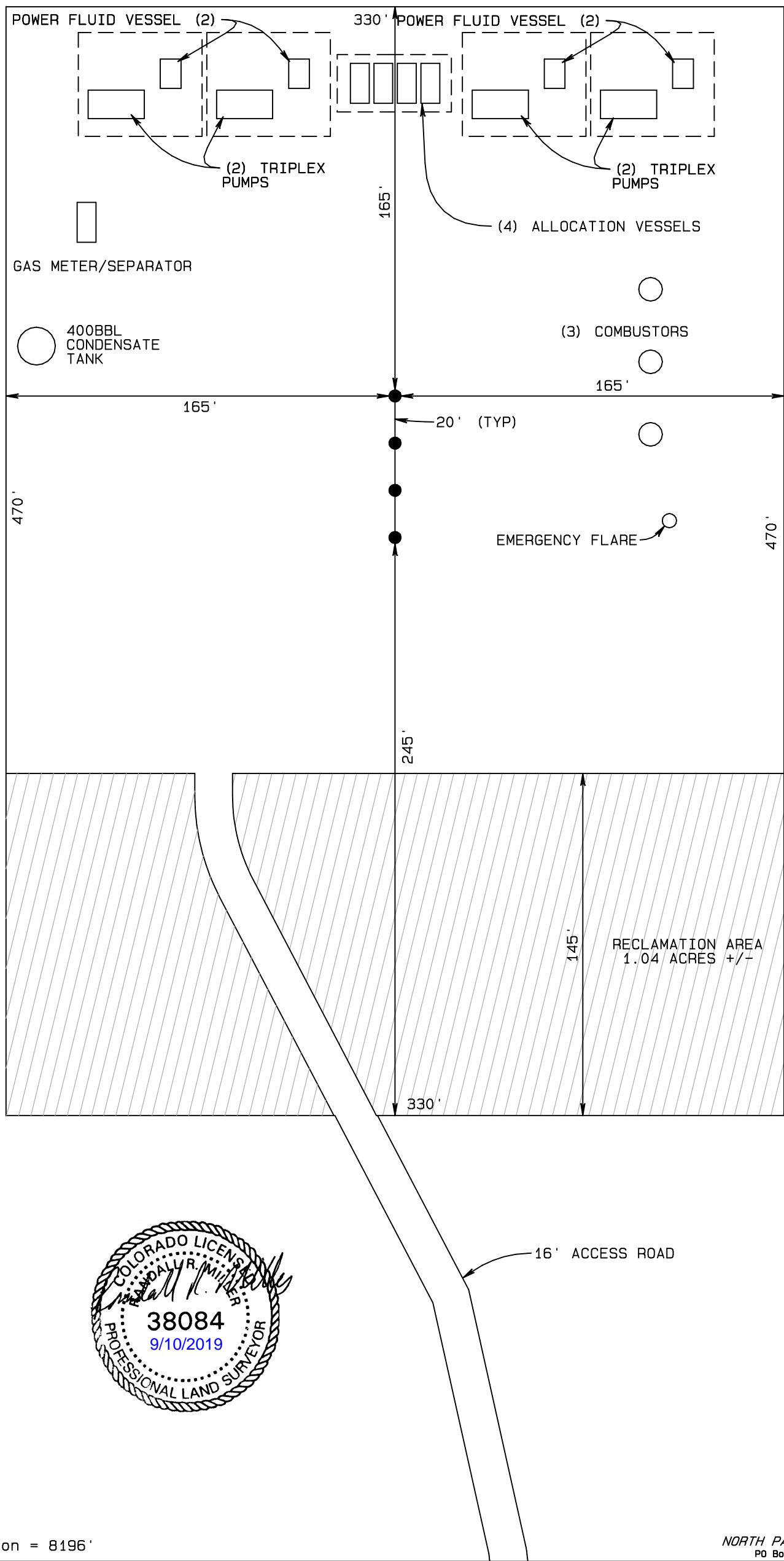


SandRidge Exploration & Production, LLC  
PRODUCTION FACILITY LAYOUT ON WELL PAD  
High Point 0880 S28 Pad  
NE1/4NW1/4 of Section 28, T8N, R80W, 6th P.M.  
Jackson County, Colorado.



Final Pad Elevation = 8196'

NORTH PARK ENGINEERING & CONSULTING, INC.  
PO Box 395 Walden, CO 80480 970-723-3725