

## 1.0 Cementing Job Summary

---

### 1.1 Executive Summary

---

Halliburton appreciates the opportunity to perform the cementing services on the **Well Name and Number** cement **Job Type** casing job. A pre-job safety meeting was held before the job where details of the job were discussed, potential safety hazards were reviewed, and environmental compliance procedures were outlined.

**Approximately XX bbls of cement were returned to surface.**

Halliburton maintains a continuous quality improvement process and appreciates any comments or suggestions that you may have. Halliburton again thanks you for the opportunity to perform service work on this well. We hope to be your solutions provider for future projects.

Respectfully,

**Halliburton Fort Lupton**

## 2.0 Real-Time Job Summary

### 2.1 Job Event Log

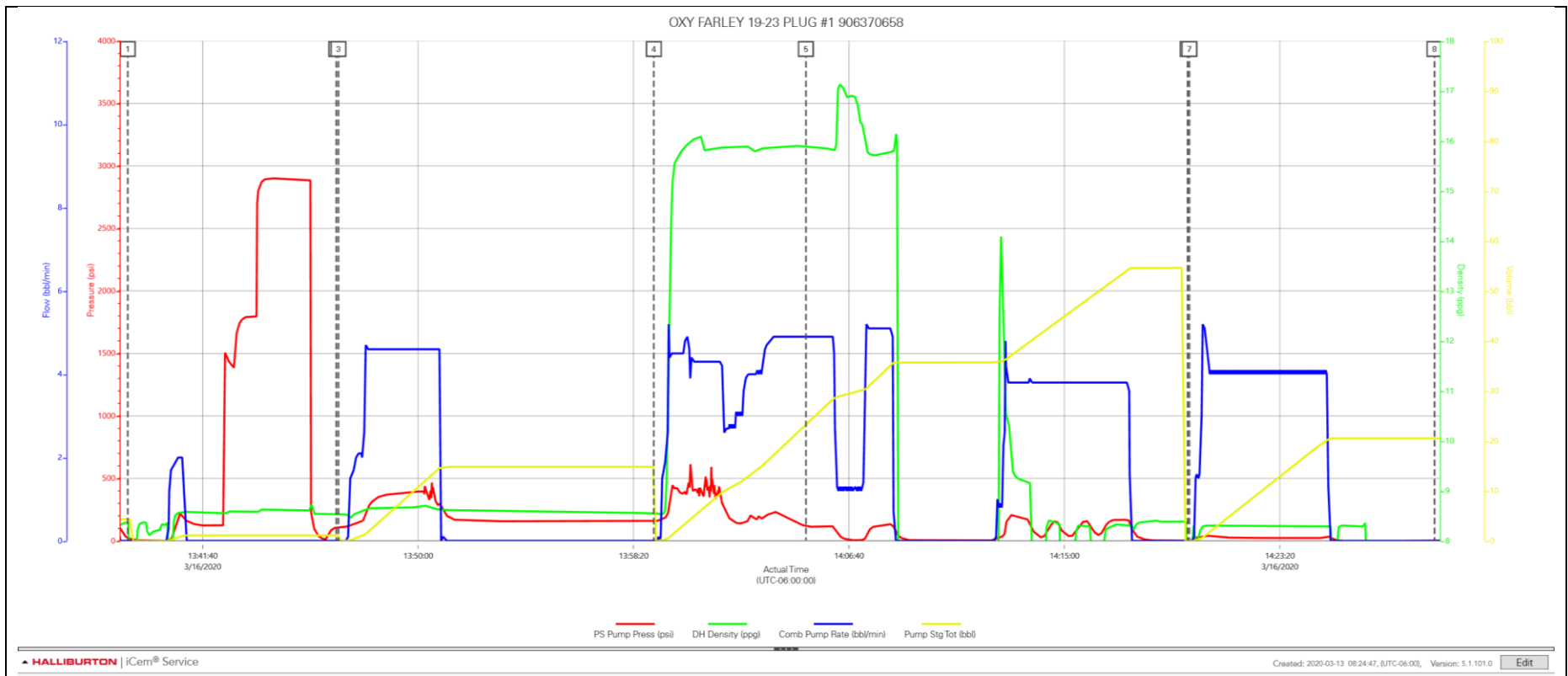
Type	Seq. No.	Activity	Graph Label	Date	Time	Source	PS Pump Press <i>(psi)</i>	DH Density <i>(ppg)</i>	Comb Pump Rate <i>(bbl/min)</i>	Pump Stg Tot <i>(bbl)</i>	Comments
Event	1	Call Out	Call Out	3/16/2020	06:00:00	USER					CREW CALLED OUT, REQUESTED ON LOCATION 12:00
Event	2	Depart Yard Safety Meeting	Depart Yard Safety Meeting	3/16/2020	10:50:00	USER					DISCUSS ROUTE AND HAZARDS
Event	3	Crew Leave Yard	Crew Leave Yard	3/16/2020	11:00:00	USER					CREW DEPART YARD
Event	4	Arrive at Location from Service Center	Arrive at Location from Service Center	3/16/2020	11:50:00	USER					ARRIVE ON LOCATION, RIG CIRCULATING UPON HES ARRIVAL
Event	5	Assessment Of Location Safety Meeting	Assessment Of Location Safety Meeting	3/16/2020	12:05:00	USER					DISCUSS LOCATION HAZARDS AND HOW TO MITIGATE THEM, WATER TEST TEMP 55, PH 7, CHLORIDES 0
Event	6	Safety Meeting - Pre Rig-Up	Safety Meeting - Pre Rig-Up	3/16/2020	12:20:00	USER					DISCUSS HAZARDS AND WAYS TO MITIGATE THEM
Event	7	Safety Meeting - Pre Job	Safety Meeting - Pre Job	3/16/2020	13:00:00	USER					PRE JOB SAFETY MEETING WITH RIG CREW AND CO REP
Event	8	Start Job	Start Job	3/16/2020	13:38:46	COM4	25.00	8.38	0.00	4.40	START RECORDING DATA.
Event	9	Test Lines	Test Lines	3/16/2020	13:46:50	COM4	109.00	8.53	0.00	1.10	PRESSURE TESTED LINES TO 2500 PSI.
Event	10	Pump Spacer 1	Pump Spacer 1	3/16/2020	13:46:55	COM4	112.00	8.53	0.00	1.10	PUMPED 10 BBLs OF MUD FLUSH 4.5 BPM 389 PSI
Event	11	Pump Cement	Pump Cement	3/16/2020	13:59:07	COM4	159.00	8.55	0.00	0.00	MIXED AND PUMPED 145 SACKS, 31.8 BBLs OF

CEMENT. 15.8 PPG, 1.23  
YIELD, 5.43GL/SK. PUMPED  
AT 5 BPM 300 PSI. (2090'  
TO 1700')

Event	12	Check Weight	Check Weight	3/16/2020	14:05:00	COM4	118.00	15.89	4.90	23.30	VERIFIED WEIGHT WITH A PRESSURIZED MUD BALANCE.
Event	13	Drop Top Plug	Drop Top Plug	3/16/2020	14:19:46	COM4	1.00	4.75	0.00	0.00	COMPANY MAN VERIFIED TOP PLUG DROPPED.
Event	14	Pump Displacement	Pump Displacement	3/16/2020	14:19:50	COM4	0.00	2.53	0.00	0.00	PUMPED 23.8 BBLS OF FRESH WATER DISPLACEMENT. PLUG BALANCED. 4 BPM 25 PSI
Event	15	End Job	End Job	3/16/2020	14:29:19	COM4	2.00	0.16	0.00	20.50	STOP RECORDING DATA.
Event	16	Safety Meeting - Pre Rig-Down	Safety Meeting - Pre Rig-Down	3/16/2020	15:00:00	USER					DISCUSS HAZARDS AND WAYS TO MITIGATE THEM
Event	17	Depart Location Safety Meeting	Depart Location Safety Meeting	3/16/2020	15:45:00	USER					DISCUSS HAZARDS AND ROUTE
Event	18	Crew Leave Location	Crew Leave Location	3/16/2020	16:00:00	USER					THANK YOU FOR USING HALLIBURTON, KYLE BATH AND CREW

3.0 Attachments

3.1 Case 1-Custom Results.png





## 1.0 Cementing Job Summary

---

### 1.1 Executive Summary

---

Halliburton appreciates the opportunity to perform the cementing services on the FARLEY 19-23 cement **PTA** casing job. A pre-job safety meeting was held before the job where details of the job were discussed, potential safety hazards were reviewed, and environmental compliance procedures were outlined.

Halliburton maintains a continuous quality improvement process and appreciates any comments or suggestions that you may have. Halliburton again thanks you for the opportunity to perform service work on this well. We hope to be your solutions provider for future projects.

Respectfully,

**Halliburton Fort Lupton**

## 2.0 Real-Time Job Summary

### 2.1 Job Event Log

Type	Seq. No.	Activity	Graph Label	Date	Time	Source	PS Pump Press <i>(psi)</i>	DH Density <i>(ppg)</i>	Comb Pump Rate <i>(bbl/min)</i>	Pump Stg Tot <i>(bbl)</i>	Comments
Event	1	Call Out	Call Out	3/17/2020	05:00:00	USER					CREW CALLED OUT, CREW REQUESTED AT 11:00
Event	2	Depart Yard Safety Meeting	Depart Yard Safety Meeting	3/17/2020	09:15:00	USER					DISCUSS ROUTE AND HAZARDS
Event	3	Crew Leave Yard	Crew Leave Yard	3/17/2020	09:30:00	USER					CREW DEPART YARD
Event	4	Arrive at Location from Service Center	Arrive at Location from Service Center	3/17/2020	10:15:00	USER					ARRIVE ON LOCATION, RIG WAITING ON WATER UPON HES ARRIVAL, RECIEVED INFO AND NUMBERS FROM JODY CORNELL, PERFS AT 817 6 SHOTS PER FT .59 SHOTS, SURFACE CSG 8 5/8 24# @ 817, OH 7 7/8, PSI ON BACKSIDE 2 13%LEO UPON HIS ARRIVAL
Event	5	Assessment Of Location Safety Meeting	Assessment Of Location Safety Meeting	3/17/2020	10:30:00	USER					DISCUSS LOCATION HAZARDS AND HOW TO MITIGATE THEM, WATER TEST, TEMP 59 PH 7 CHLORIDES 0
Event	6	Safety Meeting - Pre Rig-Up	Safety Meeting - Pre Rig-Up	3/17/2020	12:00:00	USER					DISCUSS HAZARDS AND WAYS TO MITIGATE THEM
Event	7	Safety Meeting - Pre Job	Safety Meeting - Pre Job	3/17/2020	15:00:00	USER	6.00	0.08	0.00	0.00	PRE JOB SAFETY MEETING WITH RIG CREW AND CO REP
Event	8	Start Job	Start Job	3/17/2020	15:17:05	COM4	8.00	6.69	0.00	4.50	START RECORDING DATA
Event	9	Other	Other	3/17/2020	15:42:09	COM4	9.00	8.35	0.00	5.90	SHUTDOWN AND SWAP LINES TO RIG AS UNABLE TO

Event	ID	Description	Activity	Date	Time	Code	Cost	Rate	Volume	Weight	Notes
											ESTABLISH FLOW, RIG GAINED FLOW AND SWAPPED LINES BACK AND ESTABLISHED FLOW
Event	10	Test Lines	Test Lines	3/17/2020	15:55:37	COM4	60.00	8.40	0.00	0.00	TEST LINES TO 3500 PSI
Event	11	Pump Spacer 1	Pump Spacer 1	3/17/2020	15:58:27	COM4	20.00	8.40	0.00	0.00	PUMP 10 BBL MUDFLUSH 5 BPM 550 PSI
Event	12	Check Weight	Check Weight	3/17/2020	16:08:00	COM4	226.00	8.43	0.00	0.00	VERIFY WEIGHT ON PRESSURIZED SCALES
Event	13	Pump Cement	Pump Cement	3/17/2020	16:09:05	USER	279.00	8.66	1.80	0.30	MIX AND PUMP 420 SKS 92 BBL CEMENT 15.8 PPG 1.23 FT3/SK, 5.43 GAL/SK 6 BPM 1000 PSI, PUMPED CEMENT UNTIL 15.8 PPG CEMENT WAS RECEIVED AT THE PIT, (817' TO SURF) HAD TO REDUCE RATE FROM THE ORIGINAL DISCUSSED 6 BPM AS THE CUSTOMER REP LIMITED PRESSURE TO 1000 PSI
Event	14	Other	Other	3/17/2020	17:10:51	COM4	8.00	8.45	0.00	1.10	PUMP 1 BBL FRESH WATER DOWN THE CASING, RIG CLEANED OUT STACK
Event	15	End Job	End Job	3/17/2020	17:13:26	COM4	9.00	8.39	0.00	1.40	STOP RECORDING DATA
Event	16	Safety Meeting - Pre Rig-Down	Safety Meeting - Pre Rig-Down	3/17/2020	17:16:00	USER	11.00	8.22	0.00	1.40	DISCUSS HAZARDS AND WAYS TO MITIGATE THEM
Event	17	Depart Location Safety Meeting	Depart Location Safety Meeting	3/17/2020	18:20:00	USER					DISCUSS HAZARDS AND ROUTE
Event	18	Crew Leave Location	Crew Leave Location	3/17/2020	18:50:00	USER					THANK YOU FOR USING HALLIBURTON, KYLE BATH AND CREW

3.0 Attachments

3.1 Case 1-Custom Results .png

