

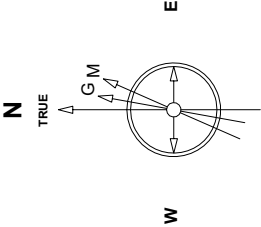
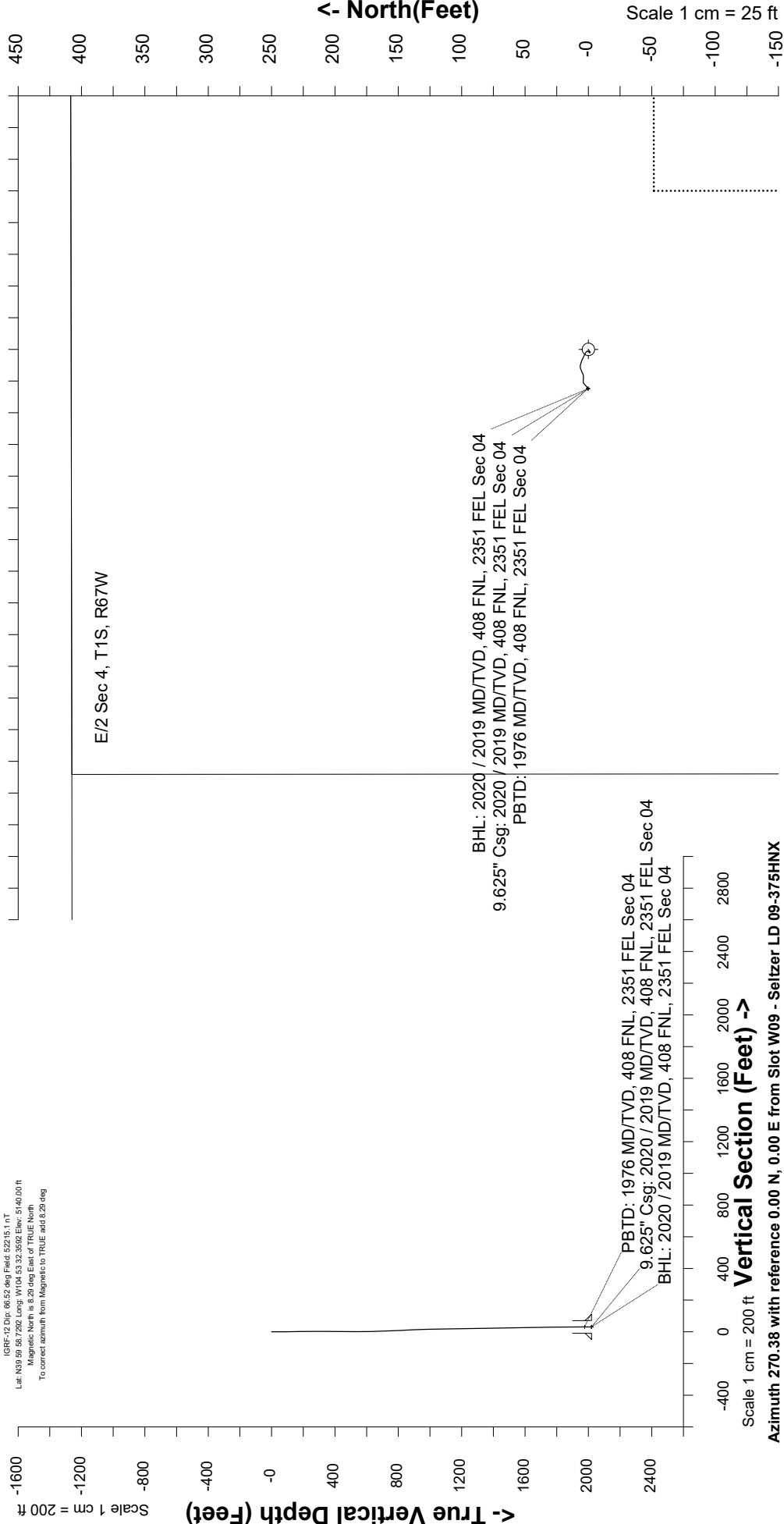
Great Western Operating Company, LLC

Created by: mmount	
Date plotted: 21-Apr-2020	
Plot reference is Seltzer LD 09-375HNX (AWB).	
Ref wellpath is Seltzer LD 09-375HNX (AWP#1).	
Coordinates are in Feet reference Slot W09 - Seltzer LD 09-375HNX.	
True Vertical Depths are reference Rig Datum.	
Measured Depths are reference Rig Datum.	
Rig Datum: Actual Datum #1	
Rig Datum to Mean Sea Level: 5146.00 ft.	
Plot North is aligned to TRUE North.	

Location	Colorado	Slot	Slot W09 - Seltzer LD 09-375HNX
Field	Wattenburg	Well	Seltzer LD 09-375HNX
Installation	Seltzer	Wellbore	Seltzer LD 09-375HNX (AWB)

East (Feet) ->

Scale 1 cm = 25 ft



Jun-17-2017  
IGRF-12 Dat: 66.52 deg Field: 62215.1 nT  
Lat: N39 59 58 7262 Long: W104 53 32 3592 Elev: 5140.00 ft  
Magnetic North is 8.29 deg East of TRUE North.  
To correct azimuth from Magnetic to TRUE add 8.29 deg

Great Western Operating Co, LLC  
 Directional Survey Report  
 Wellpath: Seltzer LD 09-375HNX  
 MDs and TVDs are from Rig Floor 5146.0ft above Mean Sea Level

MD[ft]	Inc[deg]	Azi[deg]	TVD[ft]	North[ft]	East[ft]	DLS [deg/100ft]	Vertical Section[ft]
0.00	0.00	0.00	0.00	0.00	0.00		0.00
84.00	0.77	242.14	84.00	-0.26	-0.50	0.92	0.50
172.00	0.77	230.37	171.99	-0.92	-1.48	0.18	1.47
261.00	0.59	257.21	260.98	-1.40	-2.38	0.41	2.38
354.00	0.88	25.78	353.98	-0.86	-2.54	1.43	2.54
443.00	0.60	59.84	442.97	-0.01	-1.84	0.57	1.84
533.00	0.60	18.96	532.97	0.67	-1.28	0.47	1.28
623.00	1.35	306.60	622.96	1.75	-1.98	1.45	1.99
713.00	2.40	295.42	712.91	3.19	-4.53	1.23	4.55
803.00	2.95	294.48	802.81	4.96	-8.34	0.61	8.37
893.00	2.55	281.53	892.71	6.32	-12.41	0.82	12.45
983.00	1.69	241.80	982.65	6.09	-15.54	1.84	15.58
1073.00	1.01	251.96	1072.62	5.22	-17.47	0.80	17.50
1163.00	1.01	242.02	1162.61	4.60	-18.92	0.19	18.95
1253.00	0.98	254.09	1252.60	4.02	-20.36	0.23	20.39
1343.00	1.01	272.40	1342.58	3.84	-21.89	0.35	21.92
1433.00	0.88	275.90	1432.57	3.94	-23.37	0.16	23.40
1523.00	1.38	275.87	1522.55	4.12	-25.14	0.56	25.17
1612.00	1.39	229.44	1611.53	3.53	-27.03	1.23	27.05
1702.00	1.11	225.79	1701.51	2.21	-28.48	0.32	28.49
1792.00	0.83	238.17	1791.49	1.26	-29.66	0.39	29.67
1882.00	0.38	226.92	1881.49	0.71	-30.43	0.51	30.43
1965.00	0.31	232.28	1964.49	0.39	-30.81	0.09	30.81
2020.00	0.31	232.28	2019.49	0.21	-31.04	0.00	31.05