

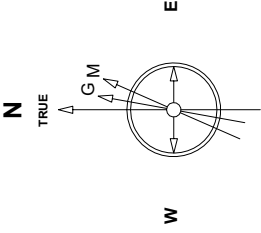
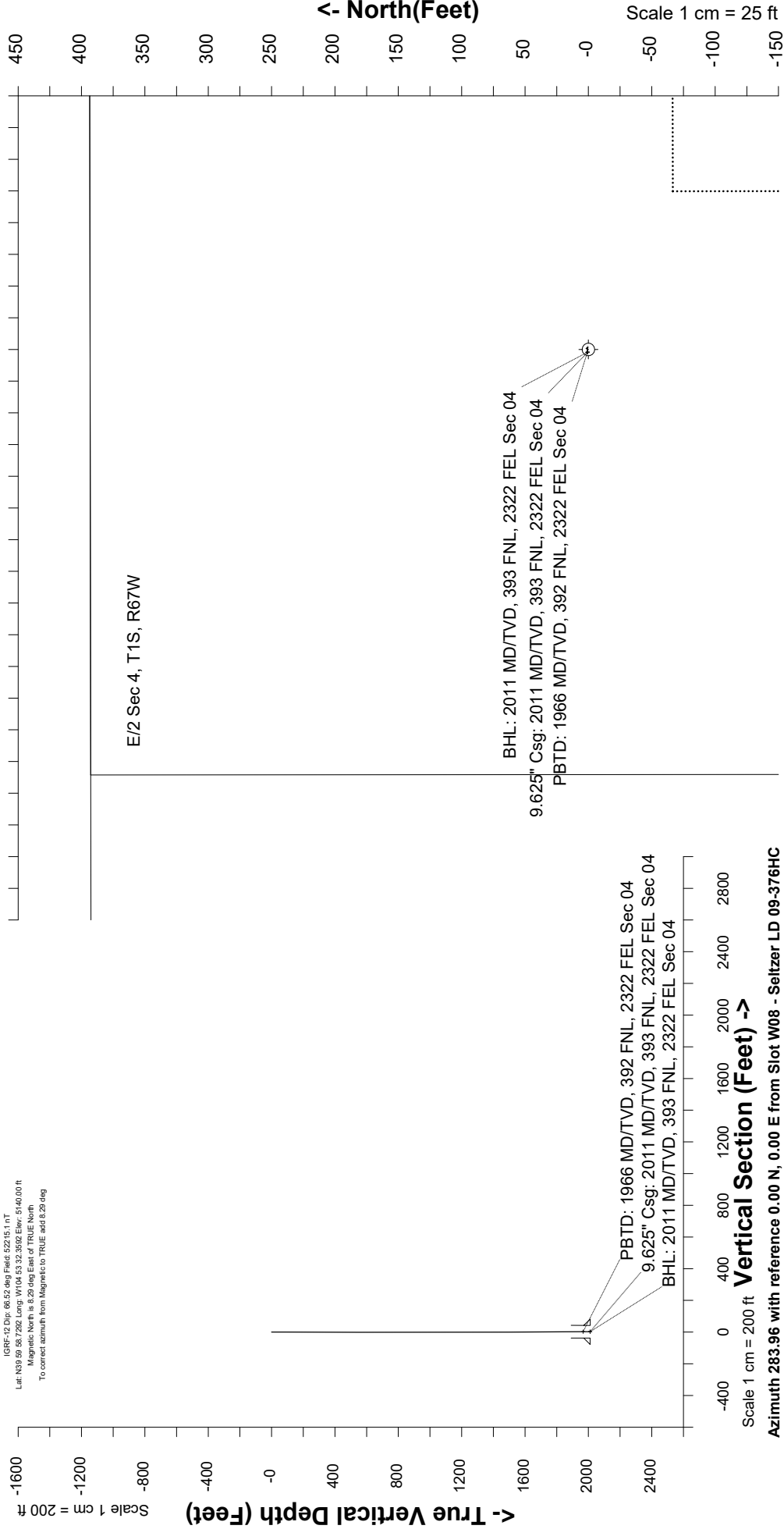
Great Western Operating Company, LLC

Created by	mmount
Date plotted	21-Apr-2020
Plot reference is Seltzer LD 09-376HC (AWB).	
Ref wellpath is Seltzer LD 09-376HC (AWP#1).	
Coordinates are in Feet reference Slot W08 - Seltzer LD 09-376HC.	
True Vertical Depths are reference Rg Datum.	
Measured Depths are reference Rg Datum.	
Rg Datum: Actual Datum #1	
Rg Datum to Mean Sea Level: 5146.00 ft.	
Plot North is aligned to TRUE North.	

Location	Colorado	Slot	Slot W08 - Seltzer LD 09-376HC
Field	Wattenburg	Well	Seltzer LD 09-376HC
Installation	Seltzer	Wellbore	Seltzer LD 09-376HC (AWB)

East (Feet) ->

Scale 1 cm = 25 ft



Jun-17-2017
IGRF-12 Dir: 68.52 deg Field: 62215.1 nT
Lat: N39 59 58 7262 Long: W104 53 32 3592 Elev: 5140.00 ft
Magnetic North is 8.29 deg East of TRUE North.
To correct azimuth from Magnetic to TRUE add 8.29 deg



Great Western Operating Co, LLC
 Directional Survey Report
 Wellpath: Seltzer LD 09-376HC
 MDs and TVDs are from Rig Floor 5146.0ft above Mean Sea Level

MD[ft]	Inc[deg]	Azi[deg]	TVD[ft]	North[ft]	East[ft]	DLS [deg/100ft]	Vertical Section[ft]
0.00	0.00	0.00	0.00	0.00	0.00		0.00
84.00	0.77	16.43	84.00	0.54	0.16	0.92	-0.02
172.00	0.60	52.86	171.99	1.39	0.69	0.52	-0.34
261.00	0.31	308.66	260.99	1.82	0.88	0.83	-0.41
354.00	0.37	171.54	353.99	1.68	0.73	0.68	-0.30
443.00	0.39	152.77	442.99	1.13	0.91	0.14	-0.61
533.00	0.20	191.75	532.99	0.70	1.01	0.30	-0.82
623.00	0.17	84.89	622.99	0.56	1.12	0.33	-0.95
713.00	0.09	285.49	712.99	0.59	1.18	0.28	-1.00
803.00	0.23	122.75	802.99	0.51	1.26	0.35	-1.10
893.00	0.26	114.51	892.98	0.33	1.60	0.05	-1.48
983.00	0.07	84.08	982.98	0.25	1.84	0.23	-1.73
1073.00	0.30	5.56	1072.98	0.49	1.92	0.33	-1.75
1163.00	0.13	305.47	1162.98	0.78	1.86	0.29	-1.62
1253.00	0.30	231.91	1252.98	0.70	1.59	0.32	-1.38
1343.00	0.62	289.44	1342.98	0.71	0.95	0.58	-0.75
1433.00	0.41	243.08	1432.98	0.73	0.20	0.50	-0.02
1523.00	0.40	302.73	1522.97	0.75	-0.35	0.45	0.52
1612.00	0.09	211.02	1611.97	0.86	-0.65	0.46	0.84
1702.00	0.07	254.10	1701.97	0.78	-0.74	0.07	0.91
1792.00	0.74	280.56	1791.97	0.88	-1.36	0.75	1.53
1882.00	0.32	292.08	1881.97	1.08	-2.17	0.48	2.36
1955.00	0.41	160.41	1954.97	0.91	-2.27	0.91	2.42
2011.00	0.41	160.41	2010.97	0.53	-2.13	0.00	2.20