

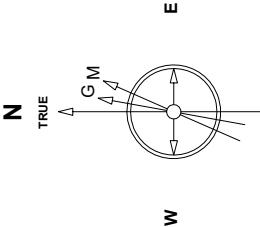
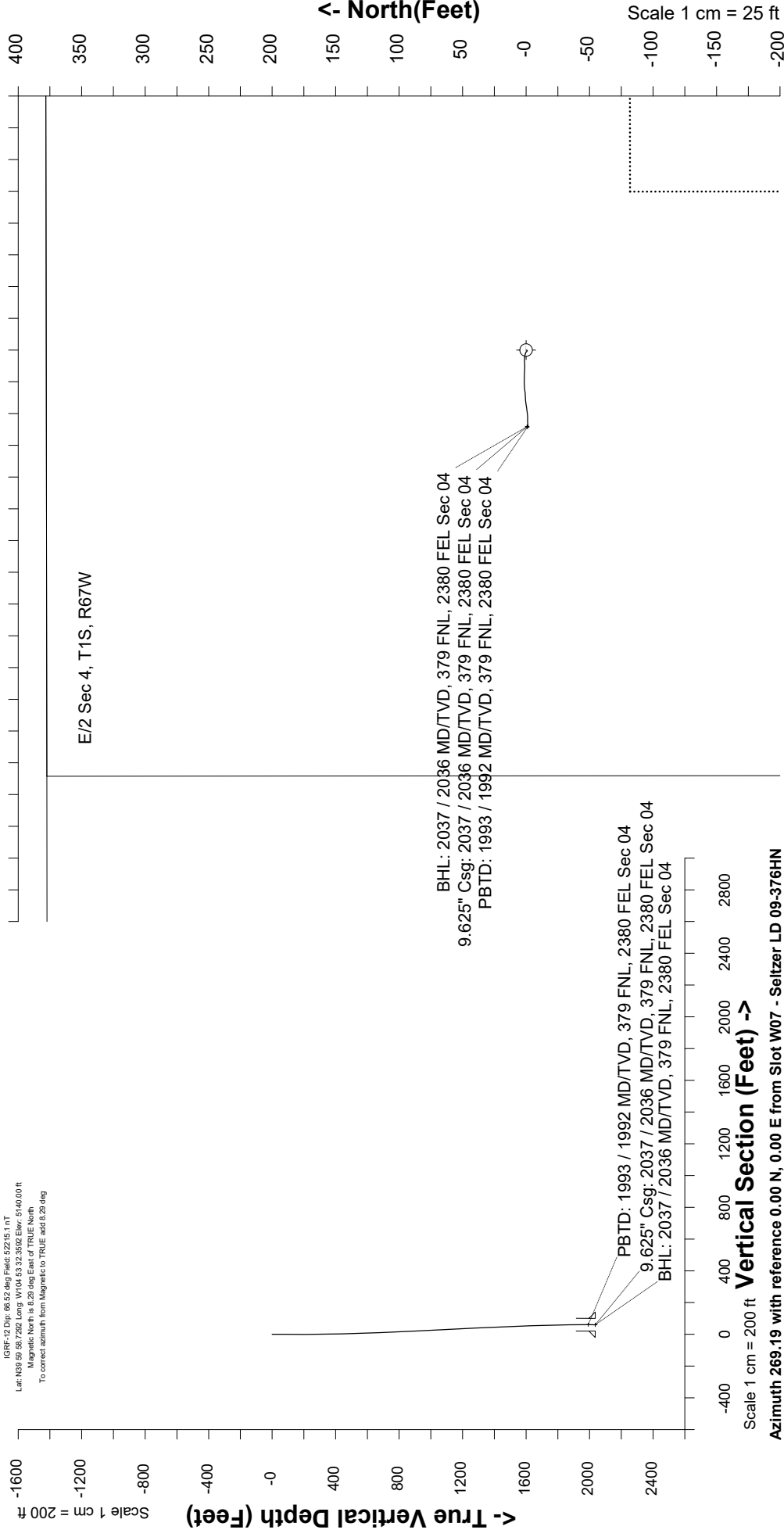
Great Western Operating Company, LLC

Created by	mmount
Date plotted	21-Apr-2020
Plot reference is Seltzer LD 09-376HN (AWB).	
Ref wellpath is Seltzer LD 09-376HN (AW/P#1).	
Coordinates are in Feet reference Slot W07 - Seltzer LD 09-376HN.	
True Vertical Depths are reference Rg Datum.	
Measured Depths are reference Rg Datum.	
Rg Datum: Actual Datum #1	
Rg Datum to Mean Sea Level: 5146.00 ft.	
Plot North is aligned to TRUE North.	

Location	Colorado	Slot	Slot W07 - Seltzer LD 09-376HN
Field	Wattenburg	Well	Seltzer LD 09-376HN
Installation	Seltzer	Wellbore	Seltzer LD 09-376HN (AWB)

East (Feet) ->

Scale 1 cm = 25 ft



Jun-17-2017
IGRF-12 Dat: 66.52 deg Field: 52215.1 n T
Lat: N19 59 58 7262 Long: W104 53 32 3592 Elev: 5140.00 ft
Magnetic North is 8.29 deg East of TRUE North.
To correct azimuth from Magnetic to TRUE add 8.29 deg

Vertical Section (Feet) ->

Scale 1 cm = 200 ft

Azimuth 269.19 with reference 0.00 N, 0.00 E from Slot W07 - Seltzer LD 09-376HN

Great Western Operating Co, LLC
 Directional Survey Report
 Wellpath: Seltzer LD 09-376HN
 MDs and TVDs are from Rig Floor 5146.0ft above Mean Sea Level

MD[ft]	Inc[deg]	Azi[deg]	TVD[ft]	North[ft]	East[ft]	DLS [deg/100ft]	Vertical Section[ft]
0.00	0.00	0.00	0.00	0.00	0.00		0.00
84.00	0.40	192.35	84.00	-0.29	-0.06	0.48	0.07
172.00	0.44	209.86	172.00	-0.88	-0.30	0.15	0.31
261.00	1.04	315.22	260.99	-0.60	-1.04	1.38	1.04
354.00	0.41	298.28	353.98	0.15	-1.92	0.71	1.92
443.00	1.05	287.58	442.98	0.55	-2.98	0.73	2.97
533.00	1.88	282.06	532.95	1.11	-5.21	0.93	5.19
623.00	2.11	264.32	622.89	1.25	-8.30	0.73	8.28
713.00	2.06	268.91	712.83	1.06	-11.57	0.19	11.55
803.00	3.16	274.07	802.74	1.20	-15.66	1.25	15.64
893.00	3.16	270.29	892.60	1.39	-20.62	0.23	20.59
983.00	2.73	270.40	982.48	1.42	-25.24	0.48	25.22
1073.00	2.84	265.40	1072.38	1.26	-29.61	0.30	29.58
1163.00	2.09	258.95	1162.29	0.76	-33.44	0.89	33.42
1253.00	2.42	272.19	1252.22	0.52	-36.95	0.68	36.94
1343.00	2.93	261.26	1342.13	0.24	-41.12	0.80	41.11
1433.00	2.82	261.78	1432.01	-0.42	-45.59	0.13	45.59
1523.00	3.02	263.11	1521.90	-1.02	-50.13	0.23	50.14
1612.00	2.16	273.08	1610.80	-1.21	-54.13	1.09	54.14
1702.00	1.38	265.61	1700.76	-1.21	-56.91	0.90	56.92
1792.00	1.11	260.03	1790.74	-1.44	-58.85	0.33	58.86
1882.00	0.66	264.64	1880.73	-1.64	-60.22	0.51	60.24
1982.00	0.52	28.75	1980.73	-1.30	-60.58	1.04	60.59
2037.00	0.52	28.75	2035.72	-0.86	-60.34	0.00	60.34