

FOUNDATION ENERGY MANAGEMENT

Scale 1:240 (5"=100') Imperial
Measured Depth Log

Well Name: STATE 36-3-9 ST1
Location: SE NE NW Section 36, T6N, R61W
License Number:
Spud Date: 8/28/12
Surface Coordinates: 792' FNL, 2496' FWL Sidetrack 36-3-9
Region: Weld County, CO
Drilling Completed: 8/30/2013
Bottom Hole Coordinates: 890' FNL, 1943' FWL
Ground Elevation (ft): 4629' K.B. Elevation (ft): 4641'
Logged Interval (ft): 2300' To: 6803' Total Depth (ft): 6803'
Formation: Niobrara, Fort Hayes, X-Bentonite, D-Sand, J-Sand
Type of Drilling Fluid: WBM

Printed by MUD.LOG from WellSight Systems 1-800-447-1534 www.WellSight.com

OPERATOR

Company: Foundation Energy Management, LLC
Address: 16000 N Dallas Pkwy, Ste 875
Dallas, TX 75248

GEOLOGIST




Name: Aaron Horner
Company: MudLogic Wellsite Services, Inc.
Address: P.O. Box 1742, Vernal, UT 84078

SYMBOLS




INTERVALS

 Slide
 Dst
 Midnight

EVENTS

 Conn
 Survey
 Bit

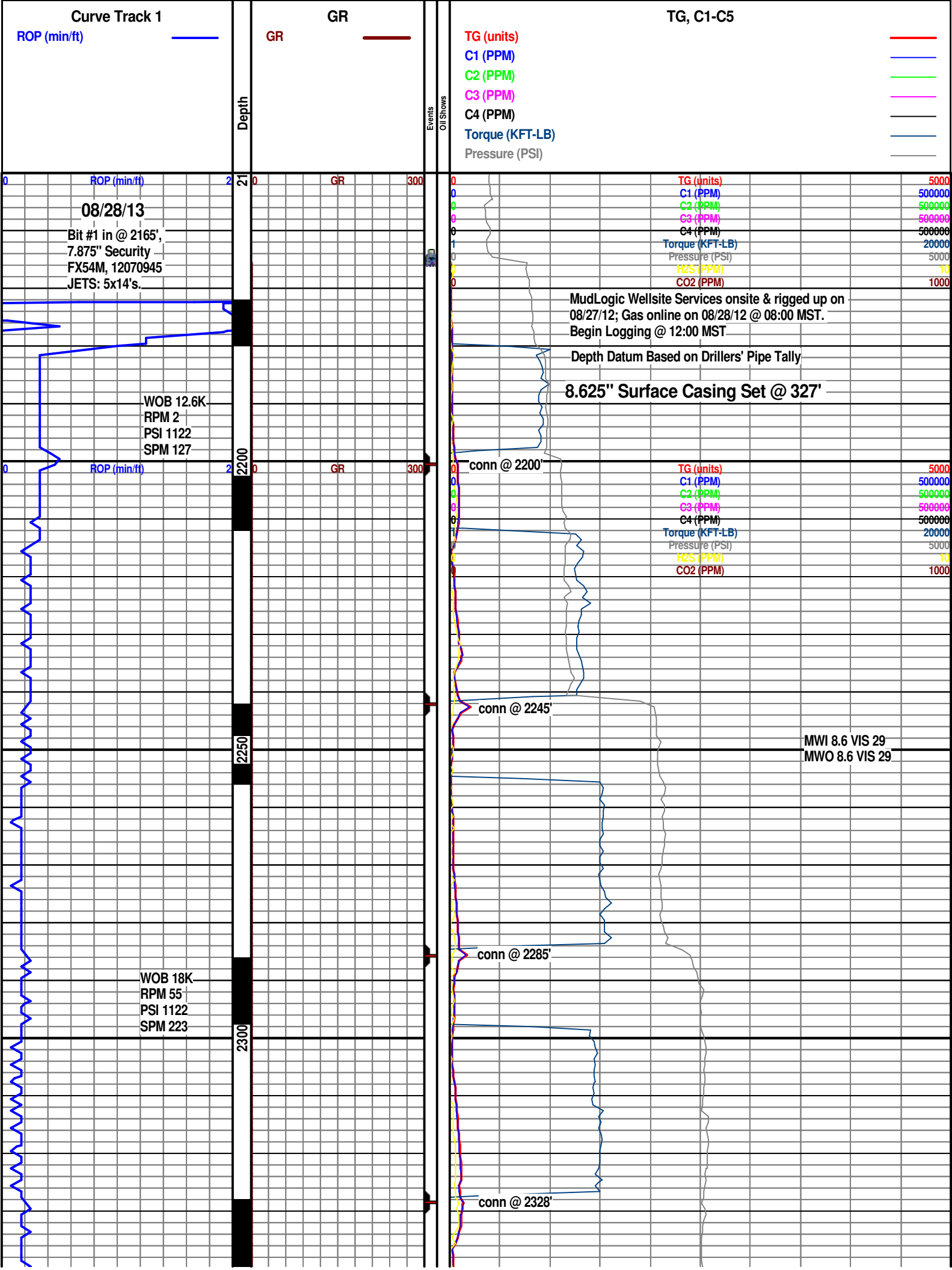
OIL SHOWS

 Even
 Spotted
 Ques



Dead
Gas show





Curve Track 1

ROP (min/ft)

GR

GR

TG, C1-C5

TG (units)

C1 (PPM)

C2 (PPM)

C3 (PPM)

C4 (PPM)

Torque (KFT-LB)

Pressure (PSI)

Depth

Events
Oil Shows

08/28/13

Bit #1 in @ 2165',
7.875" Security
FX54M, 12070945
JETS: 5x14's.

WOB 12.6K
RPM 2
PSI 1122
SPM 127

WOB 18K
RPM 55
PSI 1122
SPM 223

MudLogic Wellsite Services onsite & rigged up on
08/27/12; Gas online on 08/28/12 @ 08:00 MST.
Begin Logging @ 12:00 MST

Depth Datum Based on Drillers' Pipe Tally

8.625" Surface Casing Set @ 327'

conn @ 2200'

conn @ 2245'

conn @ 2285'

conn @ 2328'

MWI 8.6 VIS 29
MWO 8.6 VIS 29

TG (units)

C1 (PPM)

C2 (PPM)

C3 (PPM)

C4 (PPM)

Torque (KFT-LB)

Pressure (PSI)

H2S (PPM)

CO2 (PPM)

5000

500000

500000

500000

500000

20000

5000

10

1000

5000

500000

500000

500000

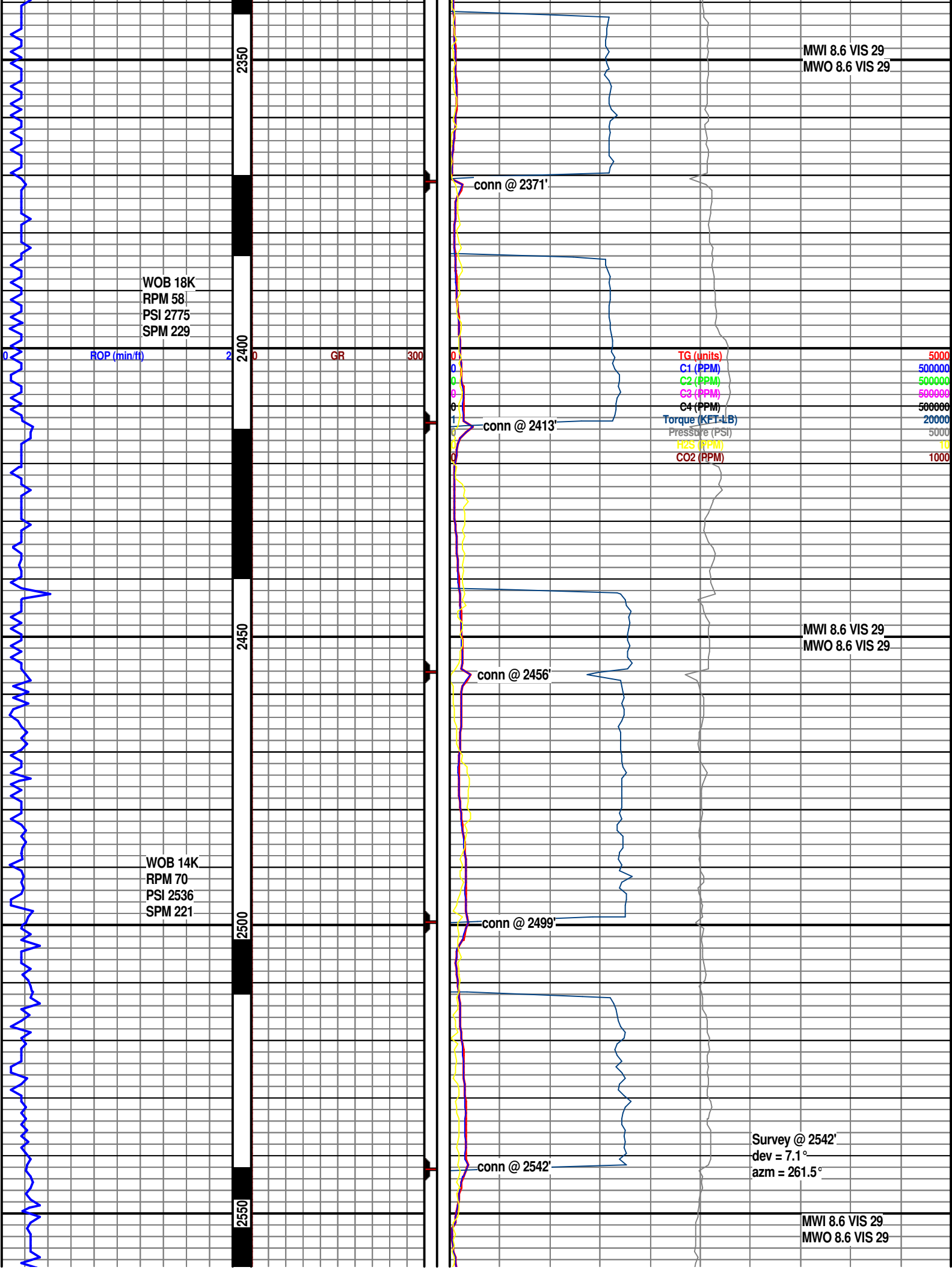
500000

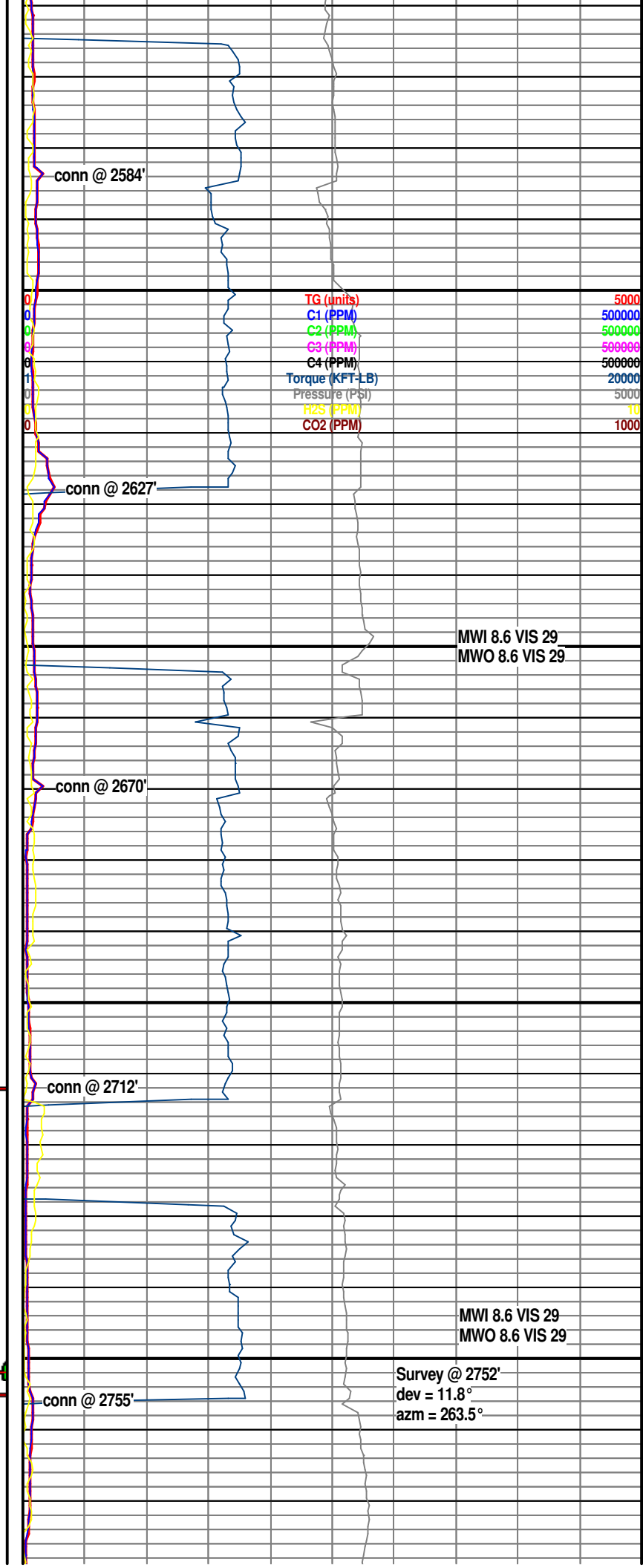
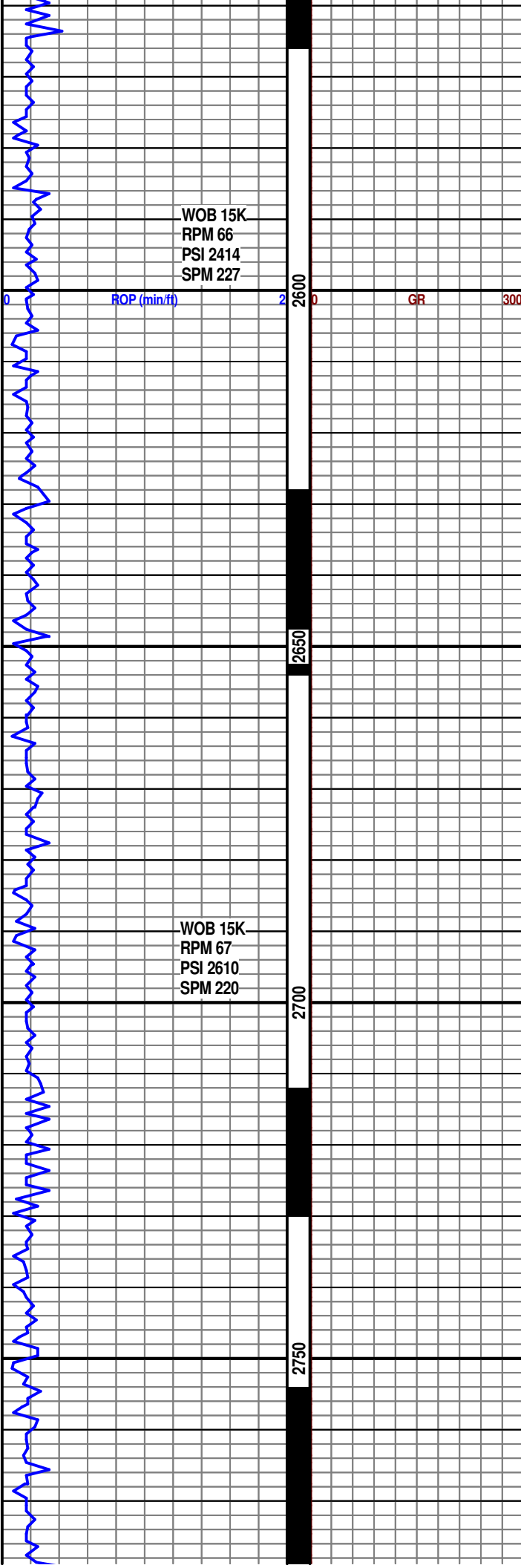
20000

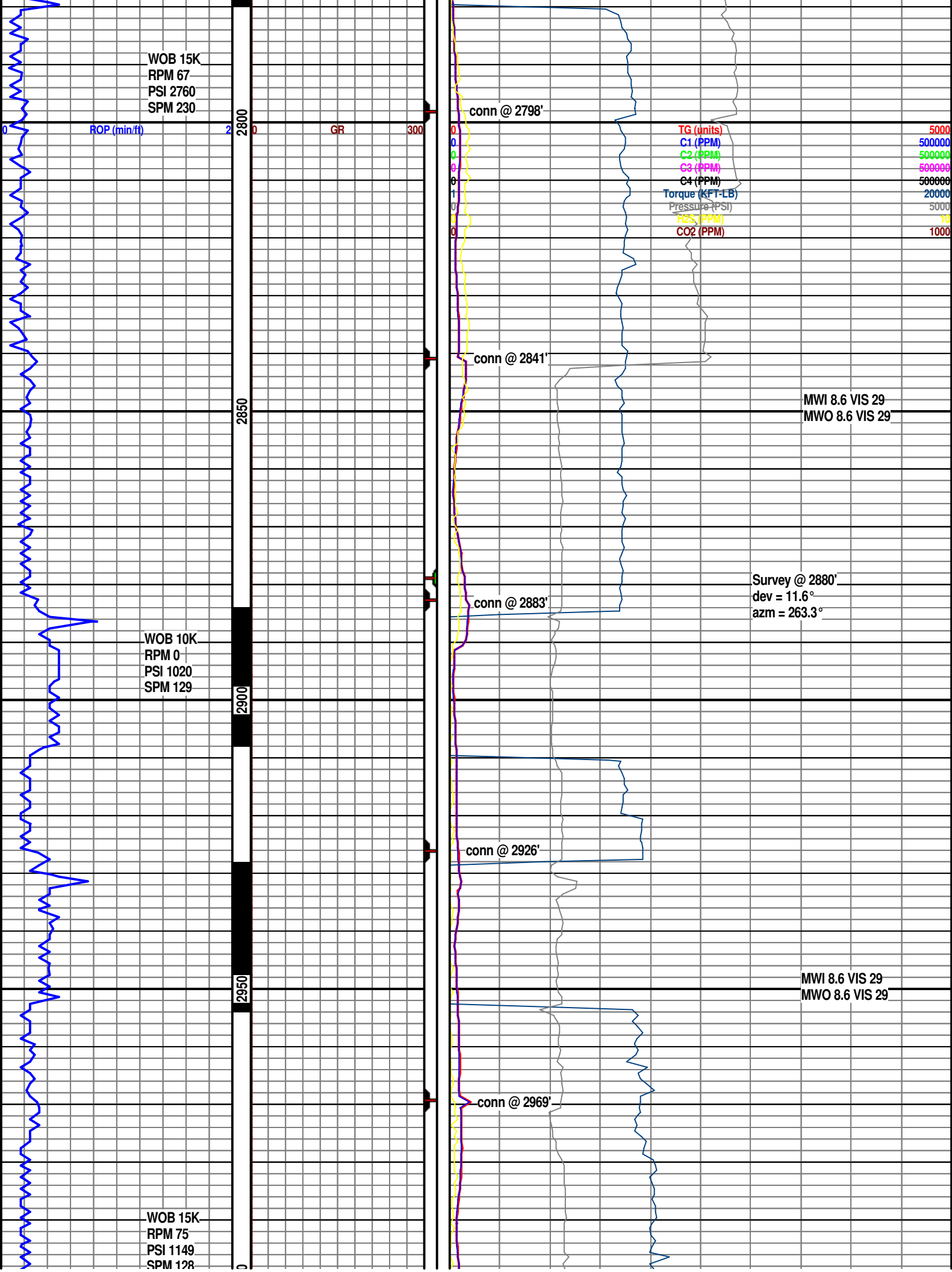
5000

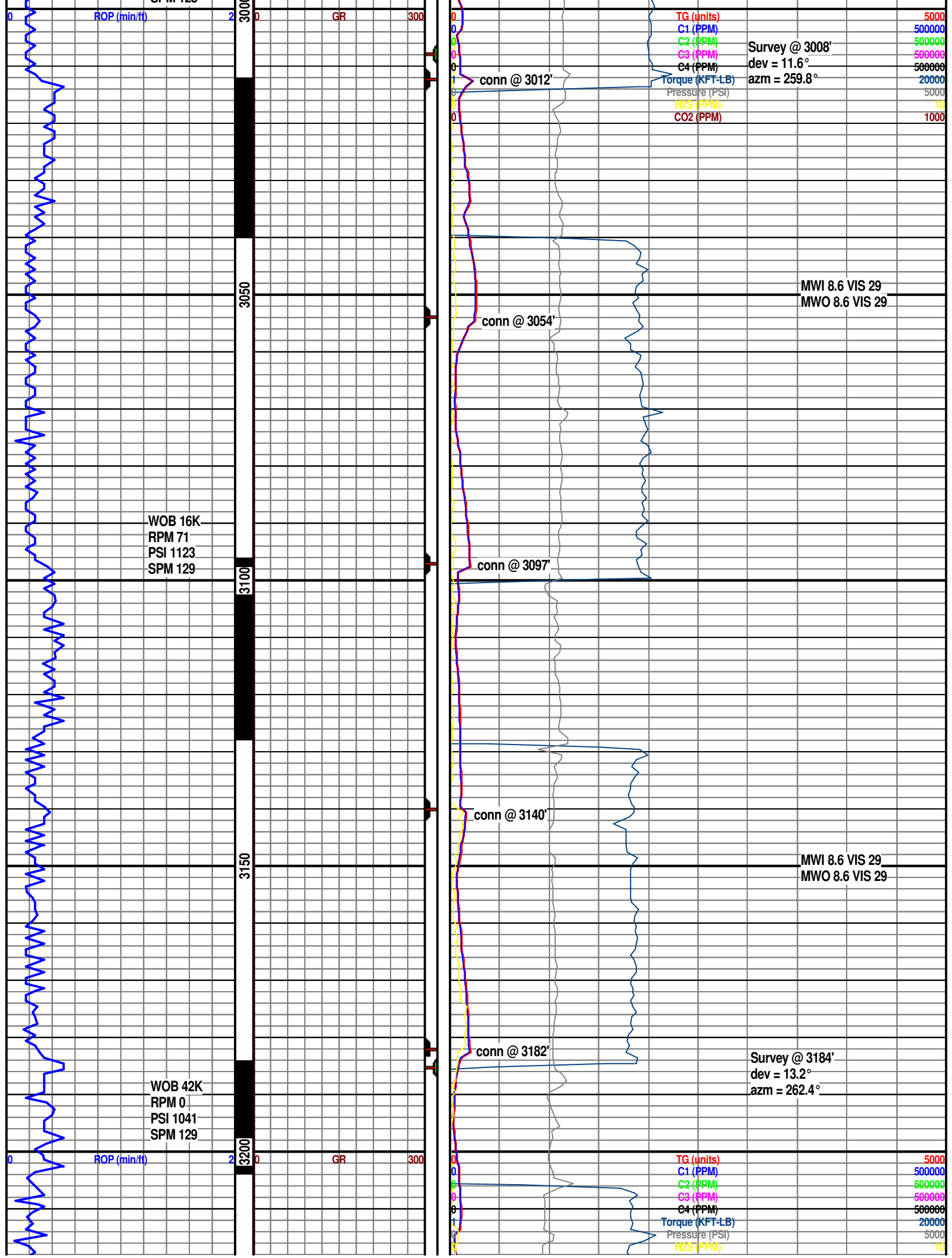
10

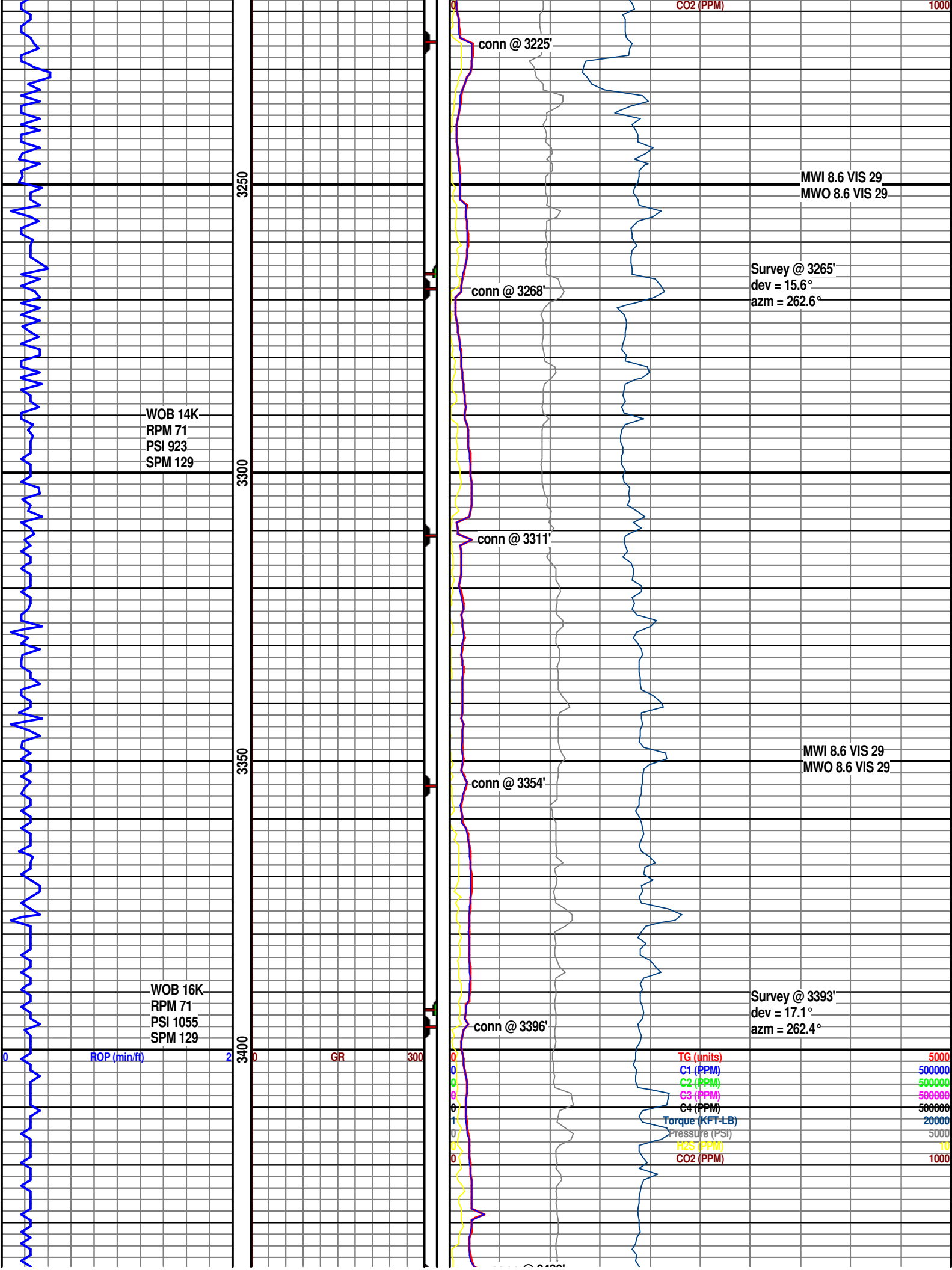
1000

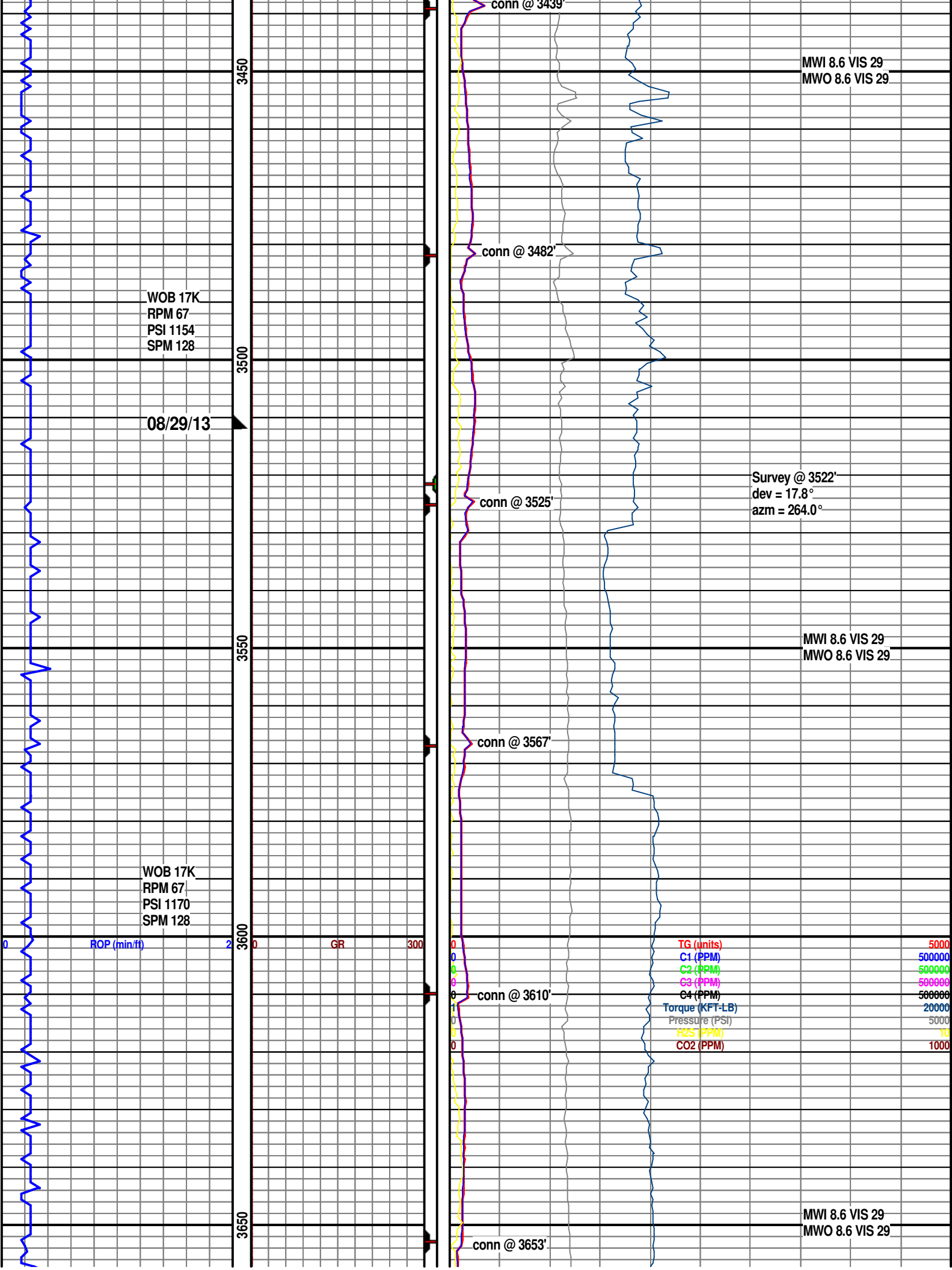


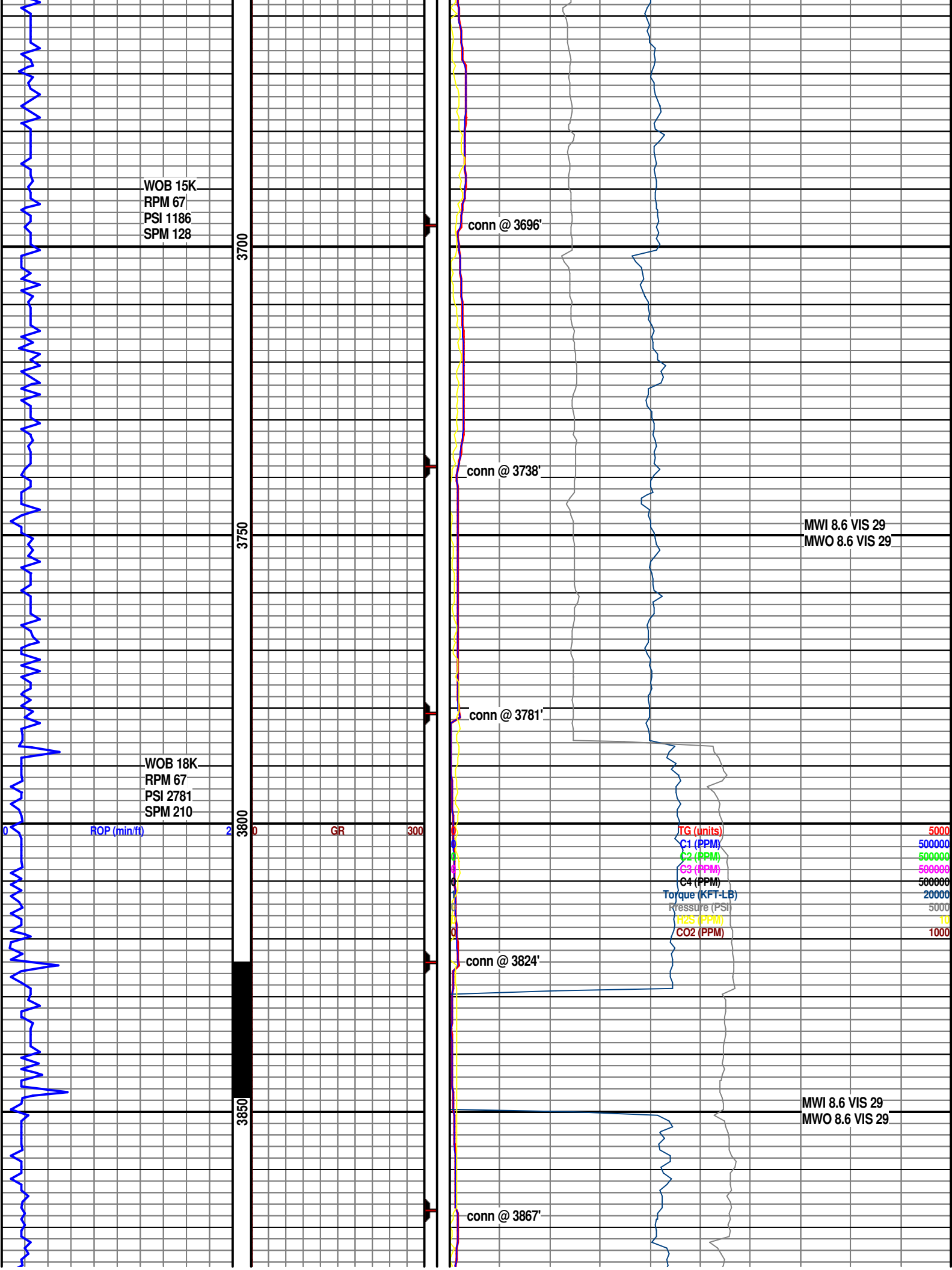


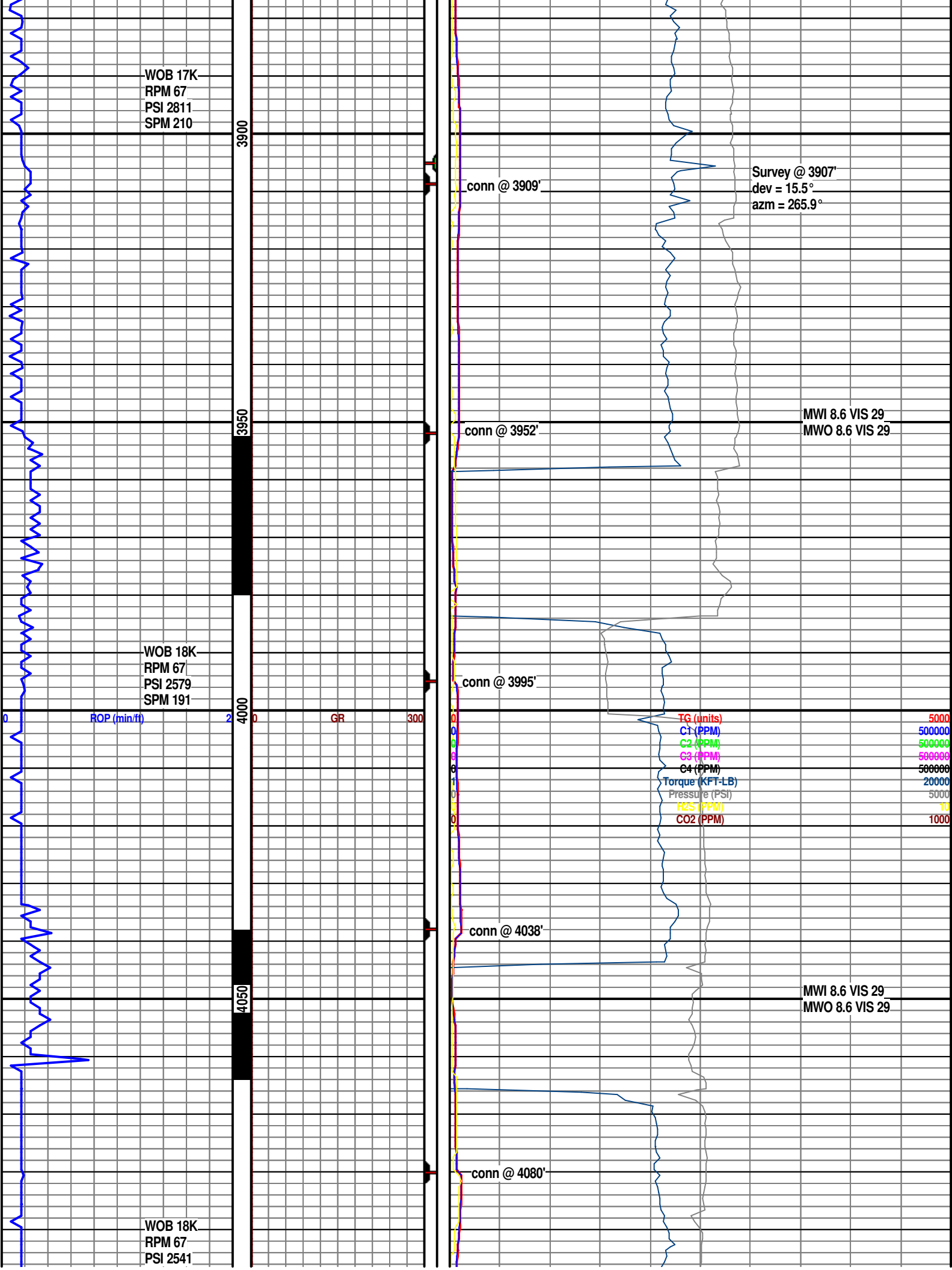


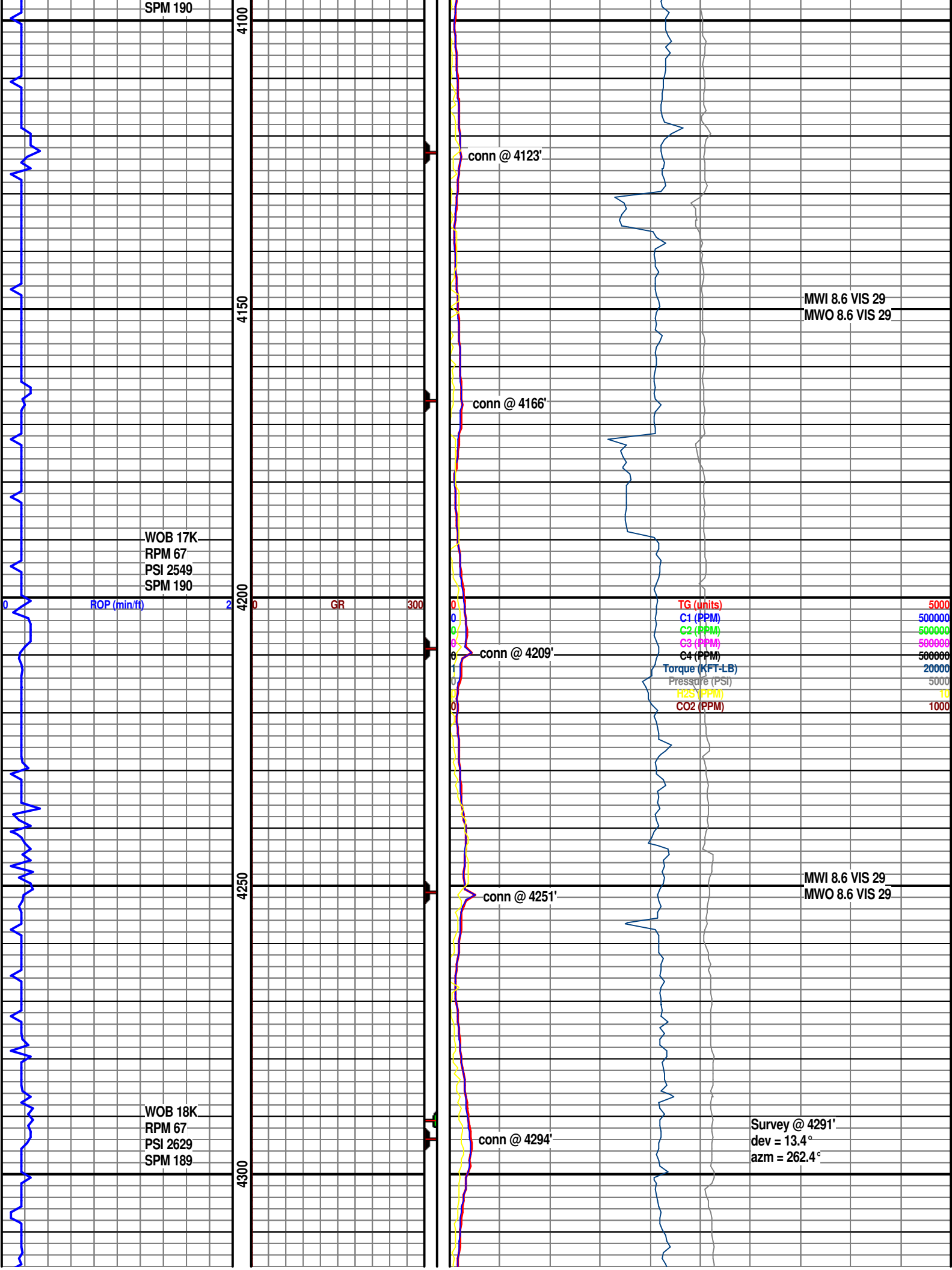


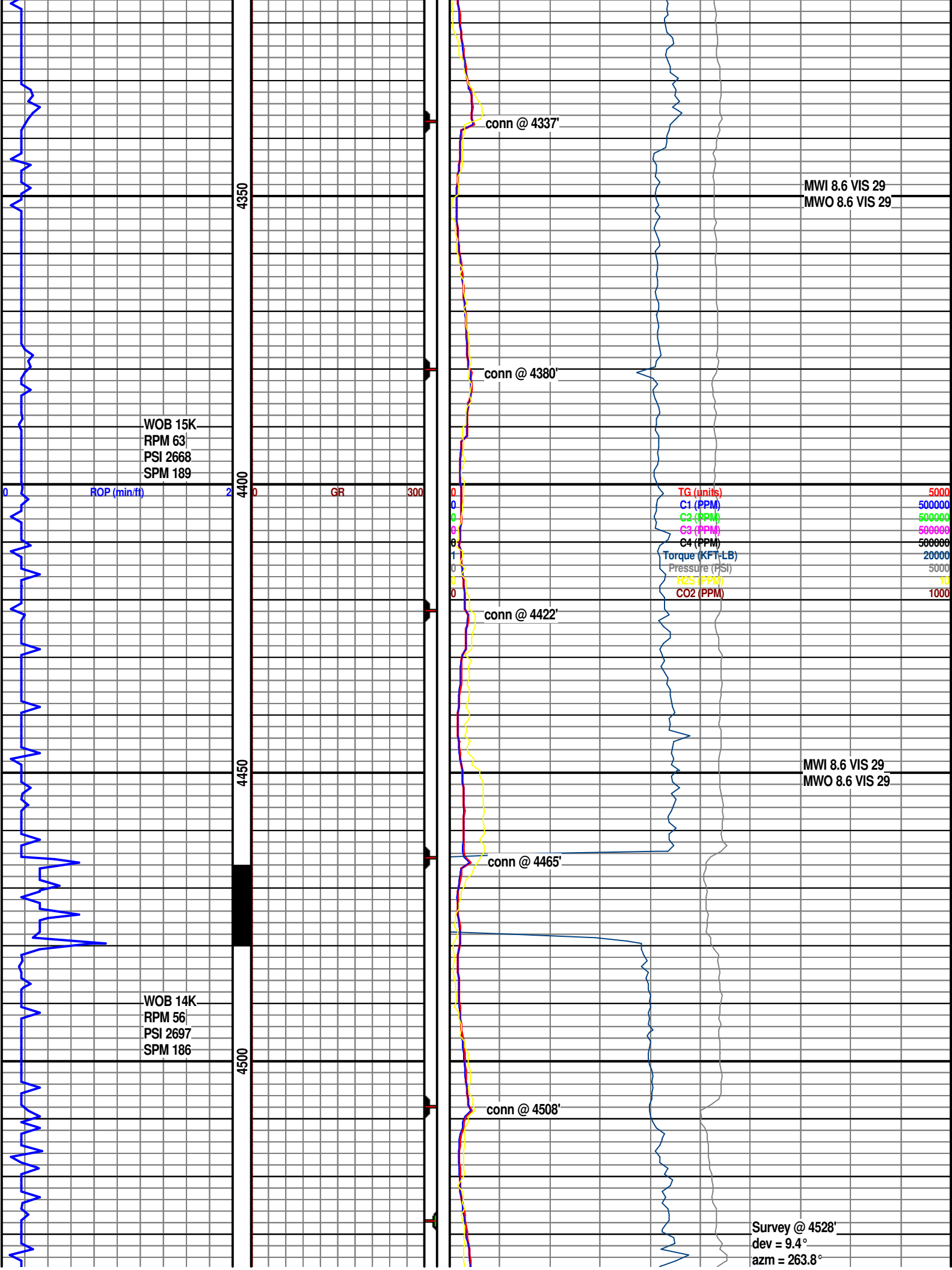


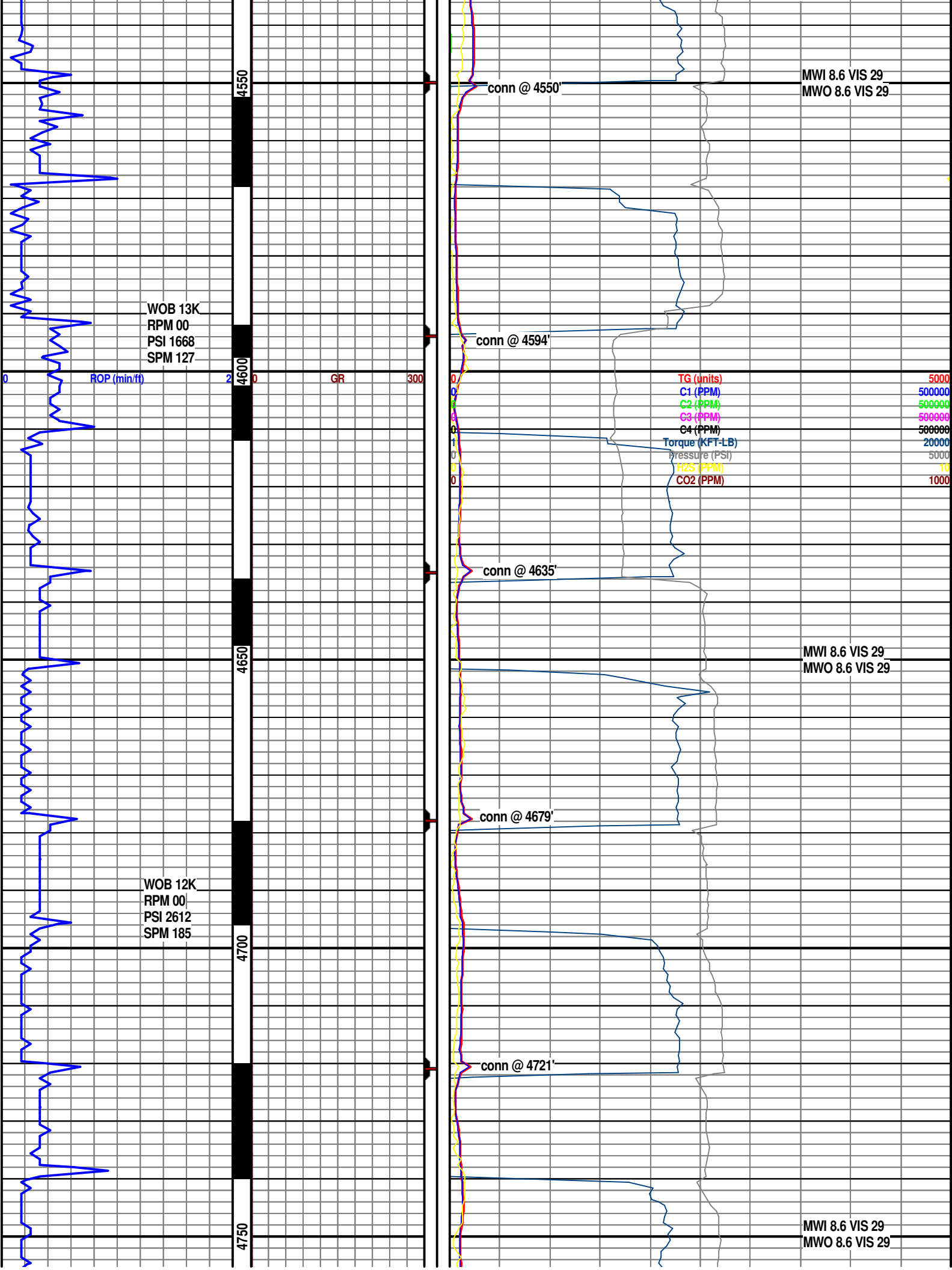


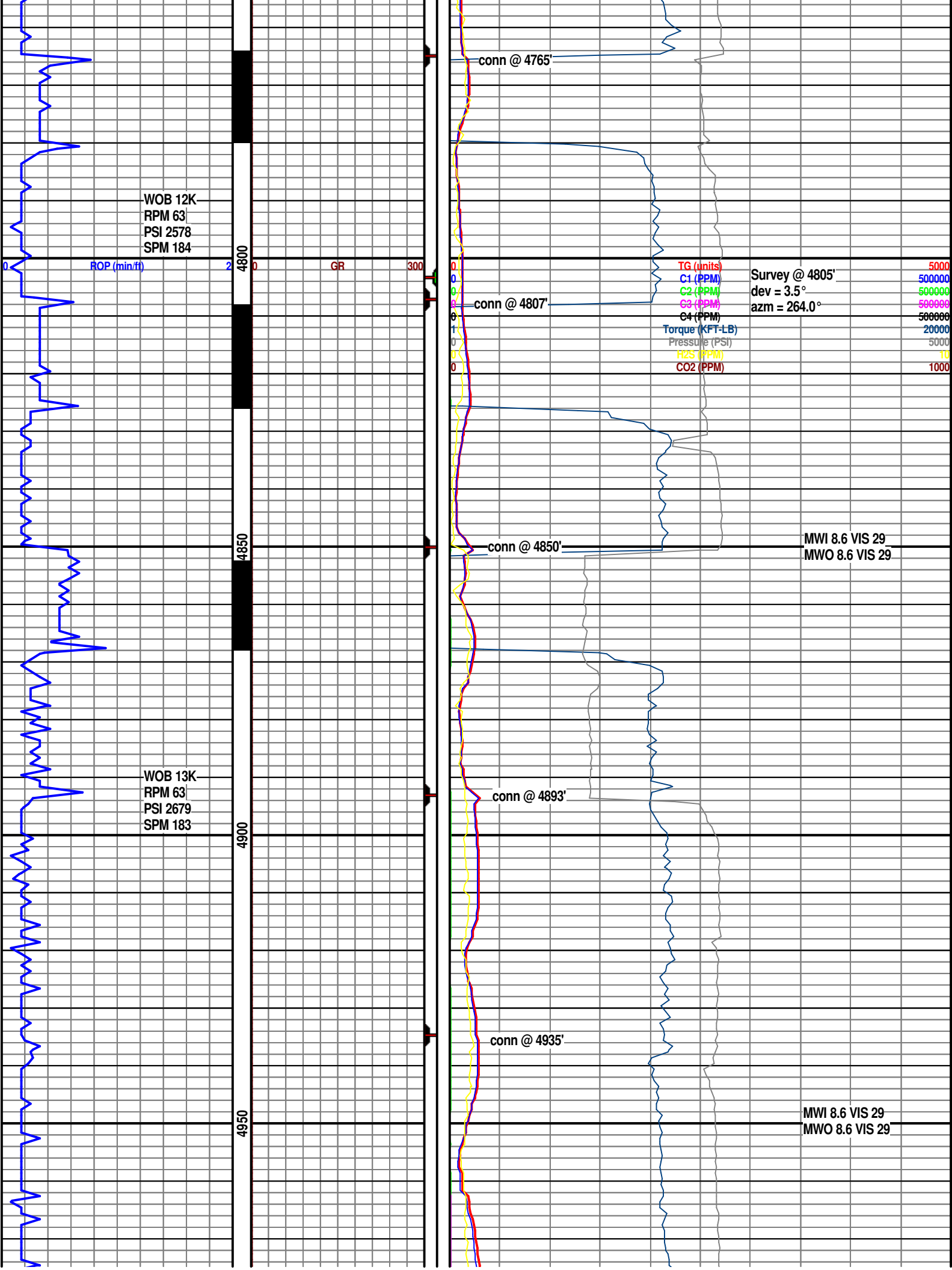


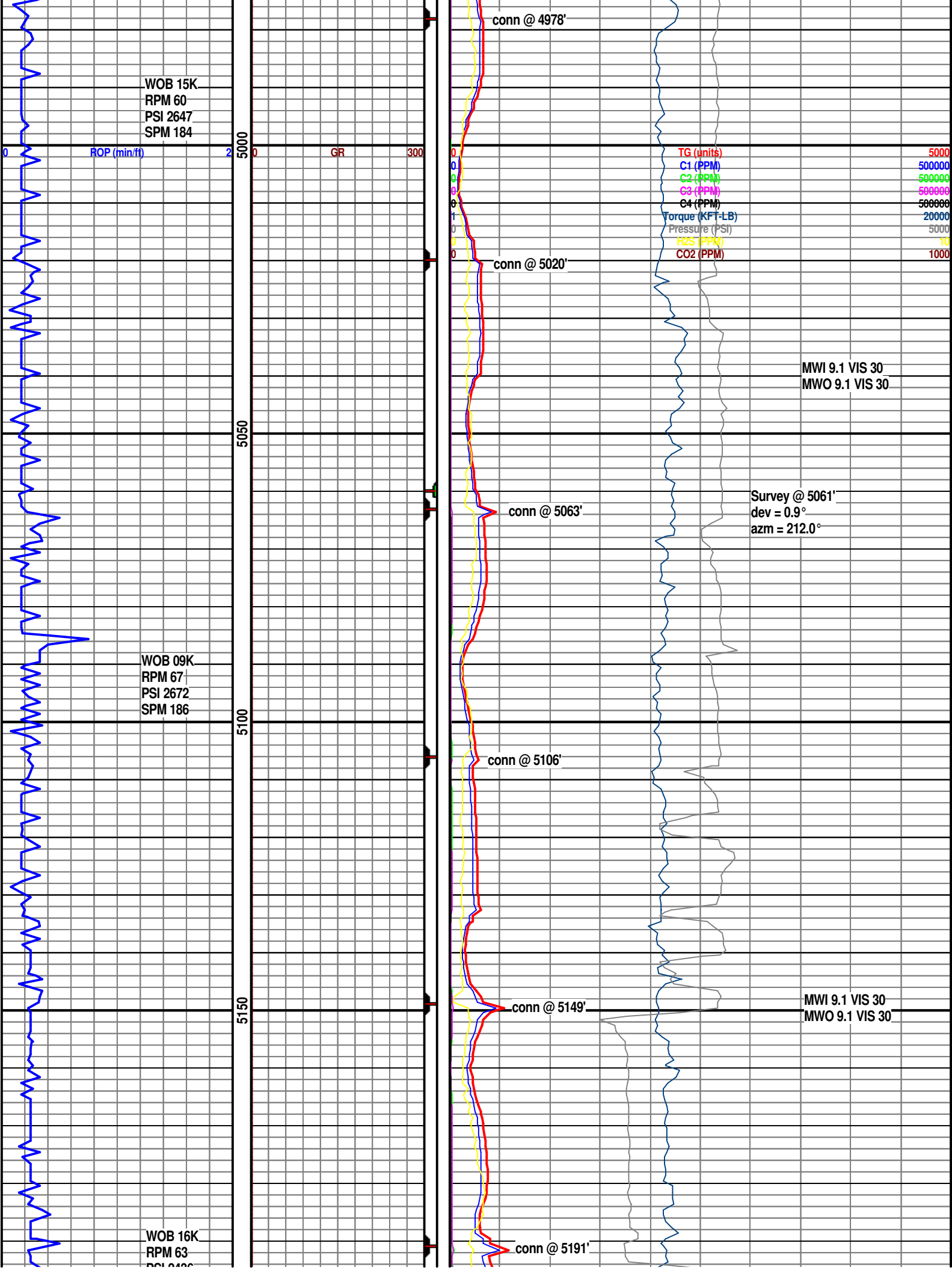


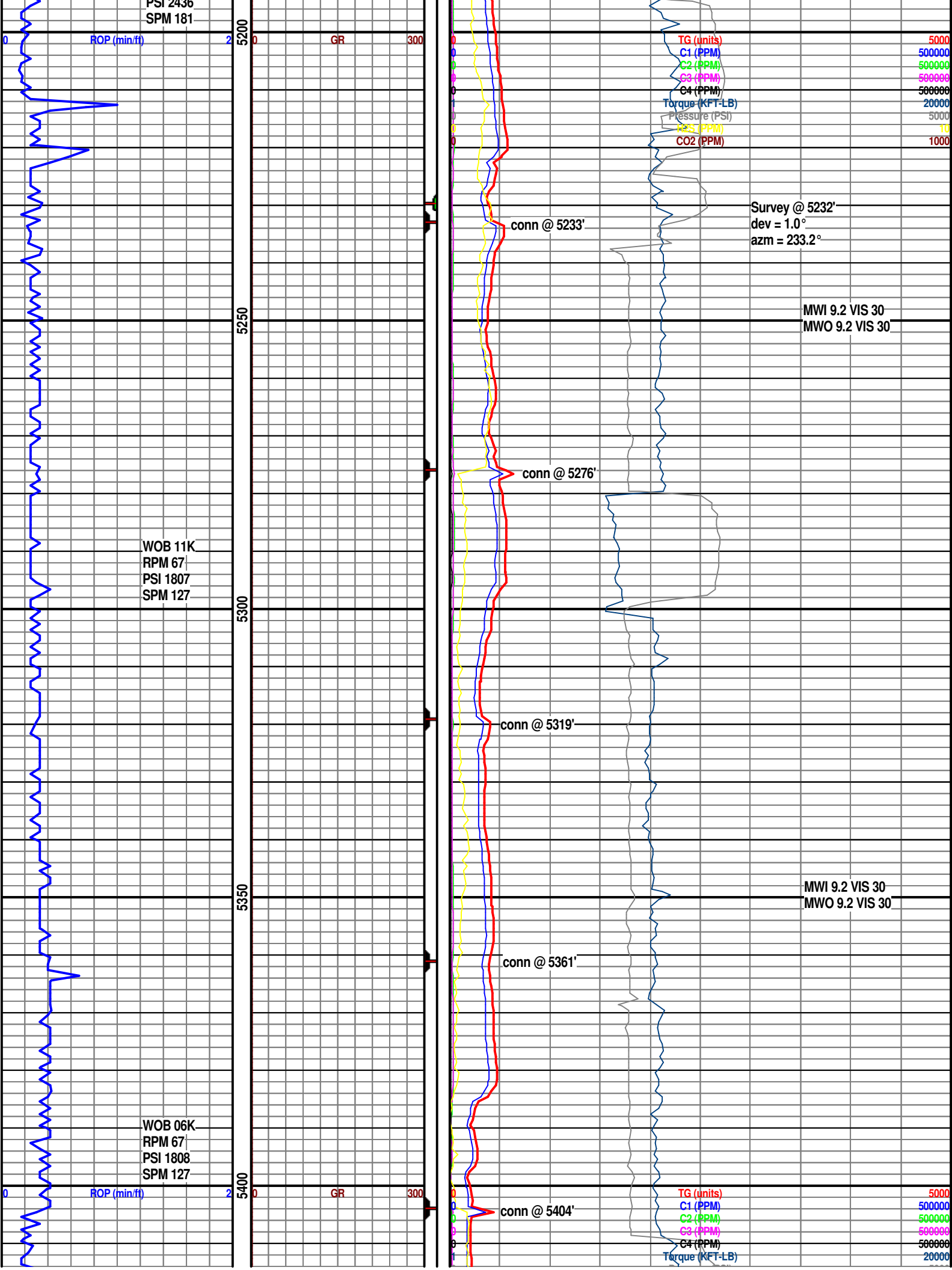


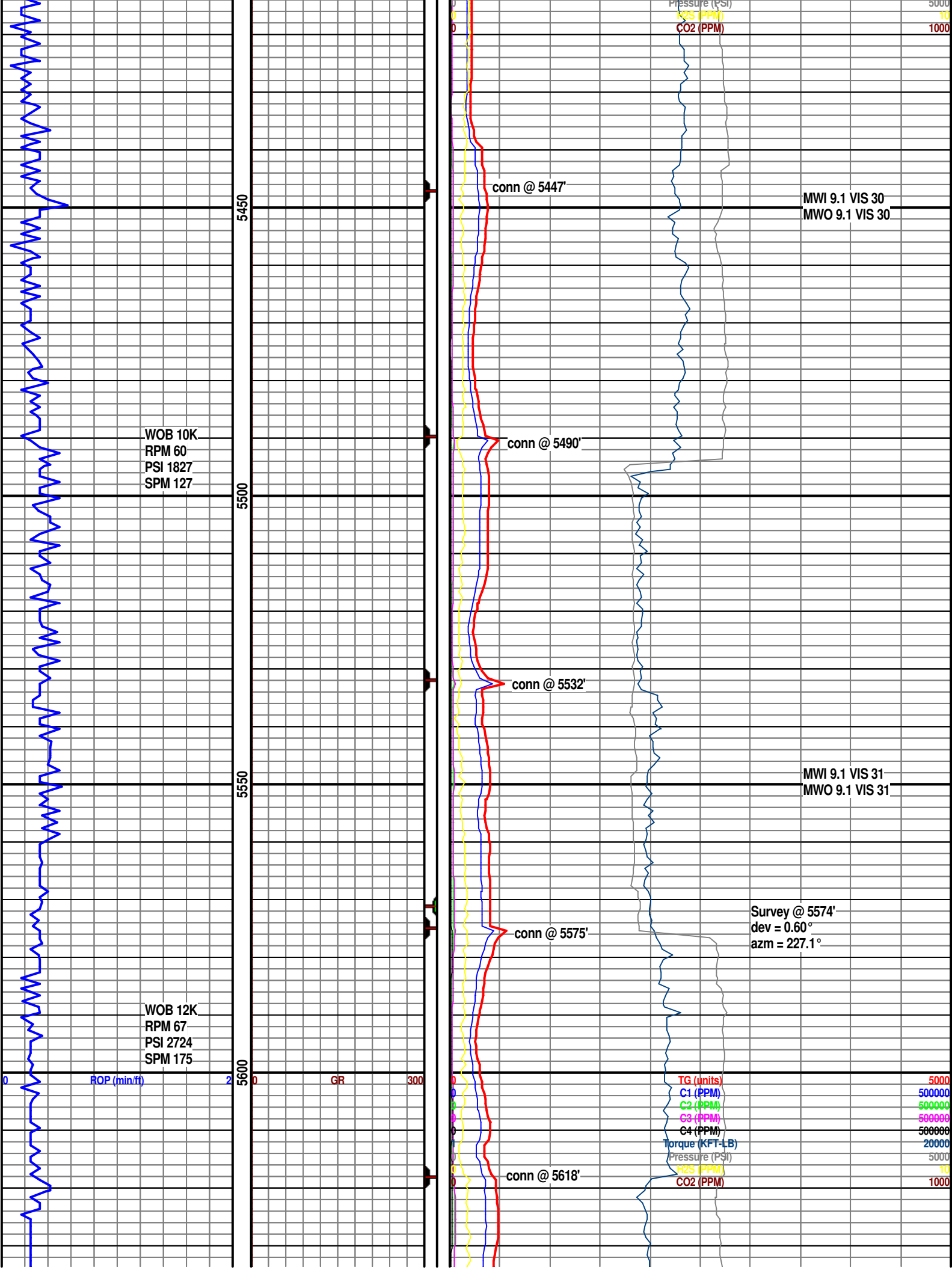


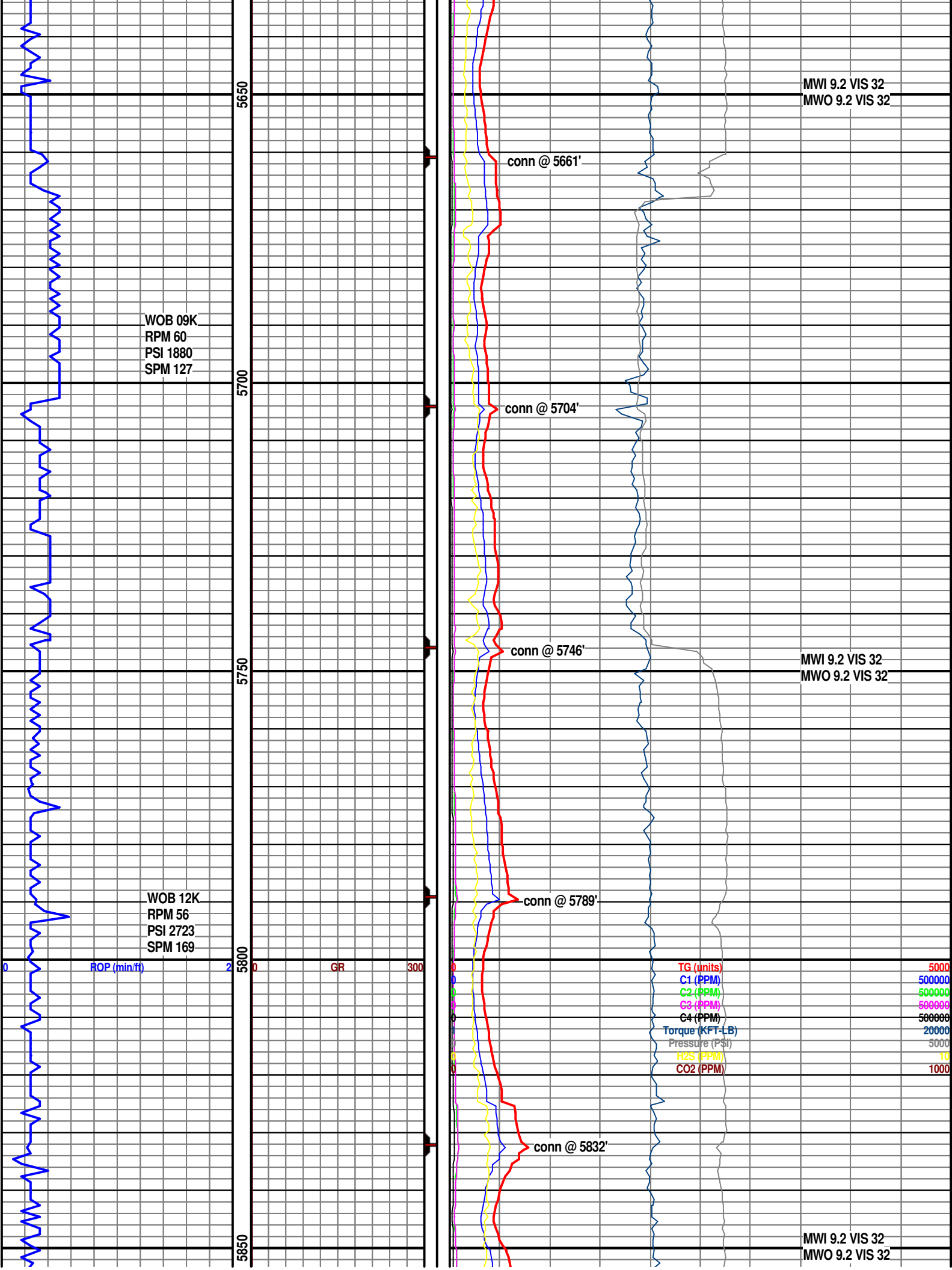


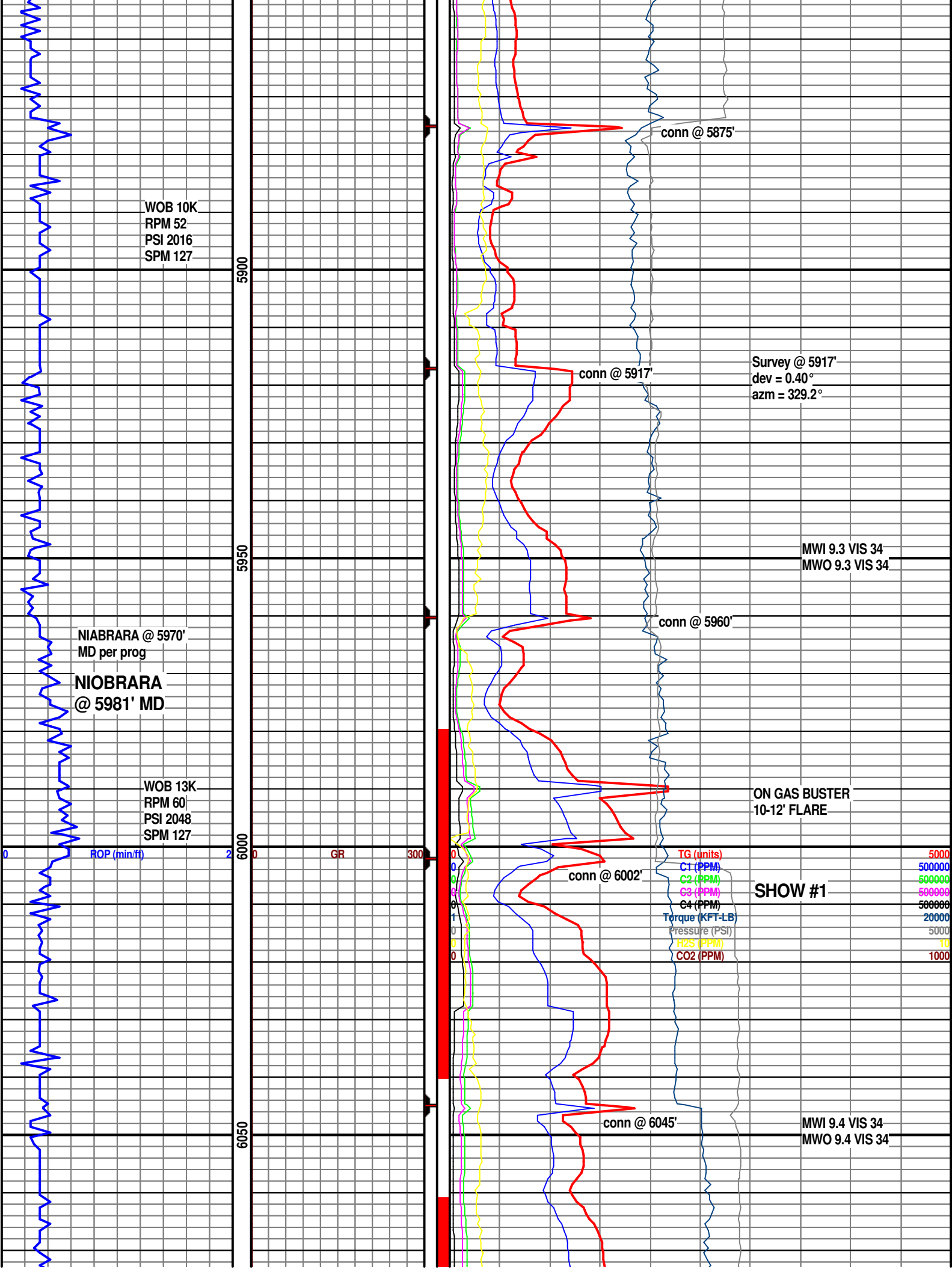












WOB 10K
RPM 52
PSI 2016
SPM 127

5900

5950

NIABRARA @ 5970'
MD per prog

NIOBRARA
@ 5981' MD

WOB 13K
RPM 60
PSI 2048
SPM 127

6000

6050

conn @ 5875'

conn @ 5917'

Survey @ 5917'
dev = 0.40°
azm = 329.2°

MWI 9.3 VIS 34
MWO 9.3 VIS 34

conn @ 5960'

ON GAS BUSTER
10-12' FLARE

conn @ 6002'

SHOW #1

TG (units)
C1 (PPM)
C2 (PPM)
C3 (PPM)
C4 (PPM)
Torque (KFT-LB)
Pressure (PSI)
H2S (PPM)
CO2 (PPM)

5000
500000
500000
500000
500000
20000
5000
10
1000

conn @ 6045'

MWI 9.4 VIS 34
MWO 9.4 VIS 34

