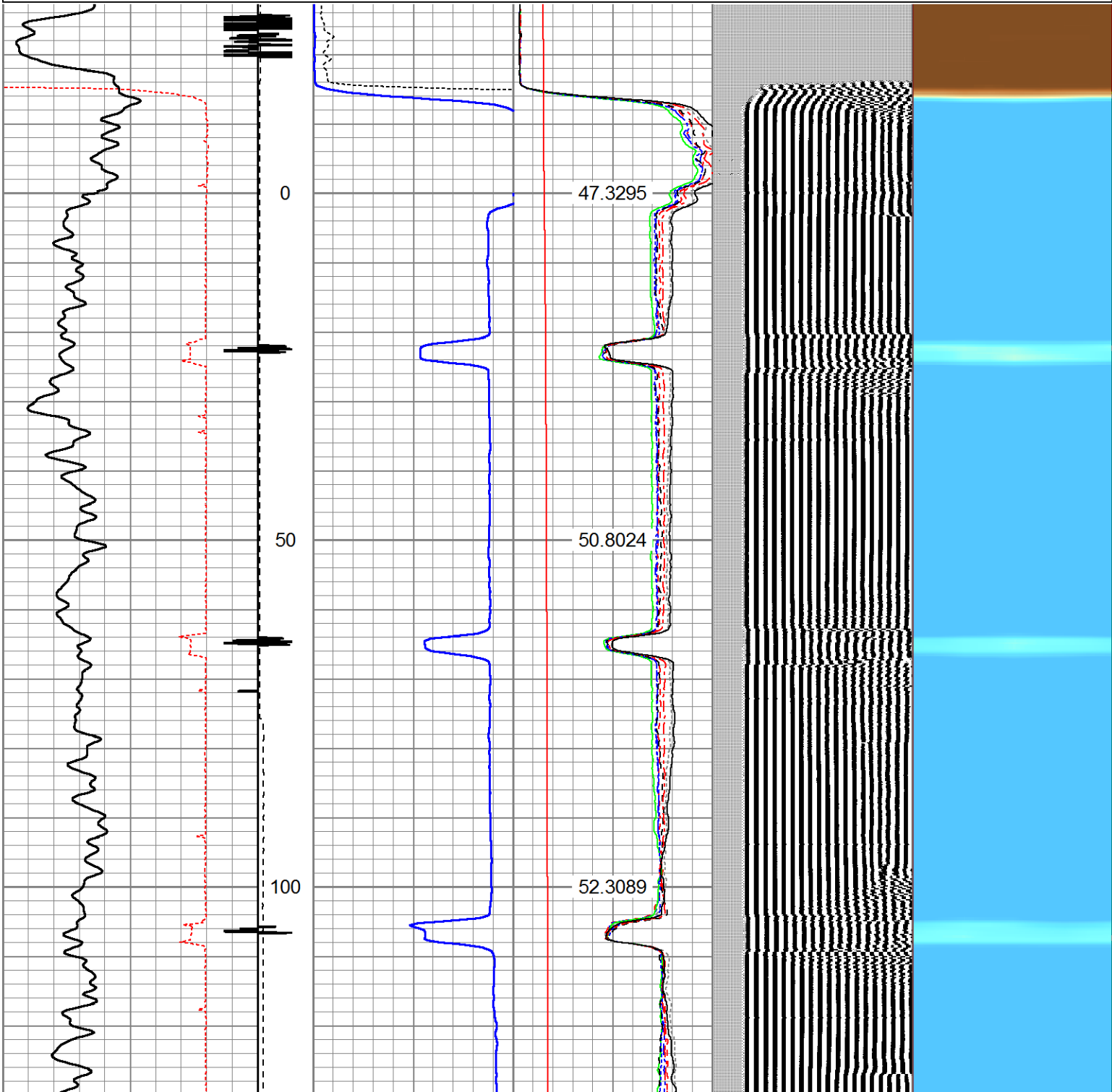
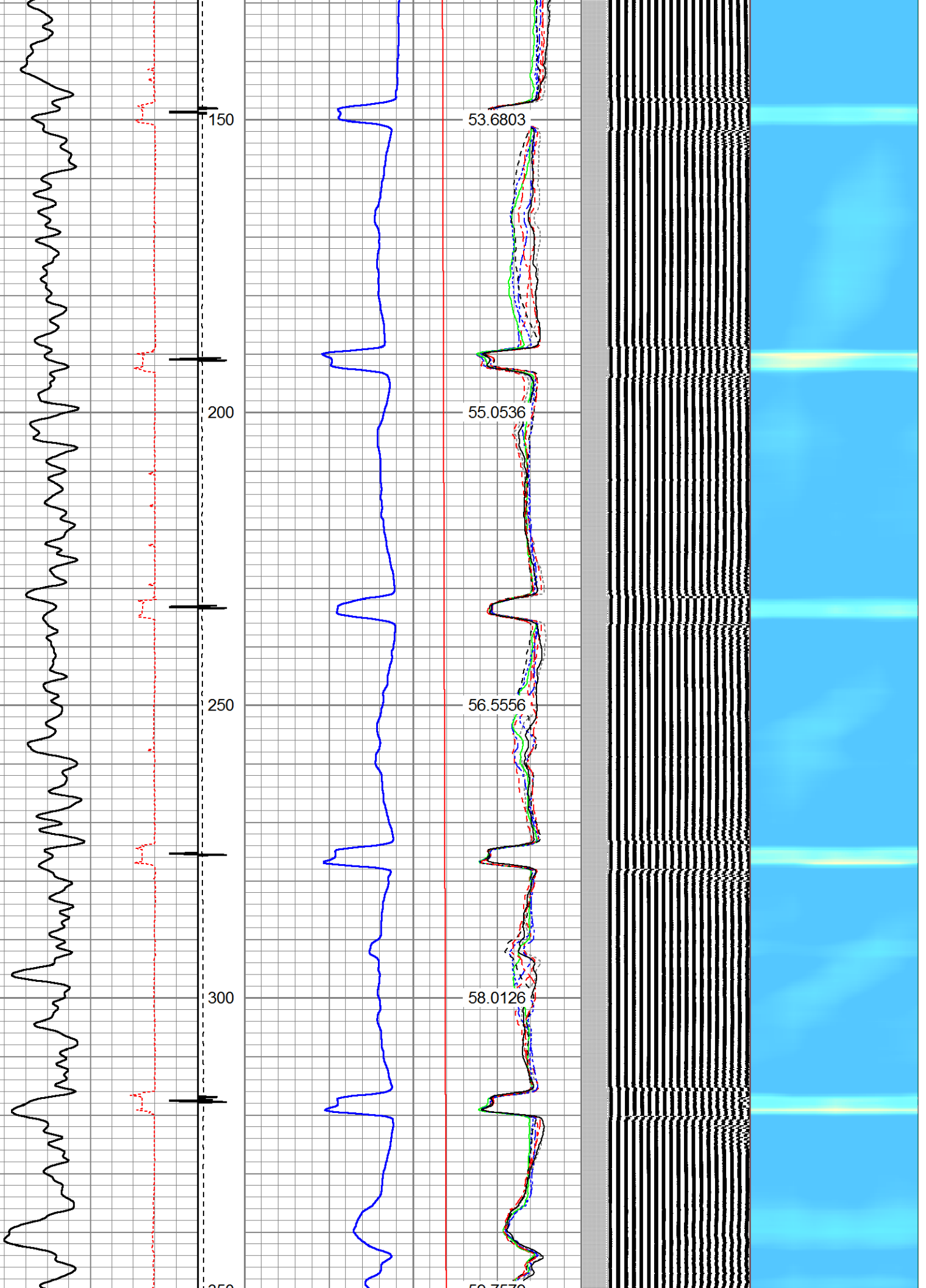


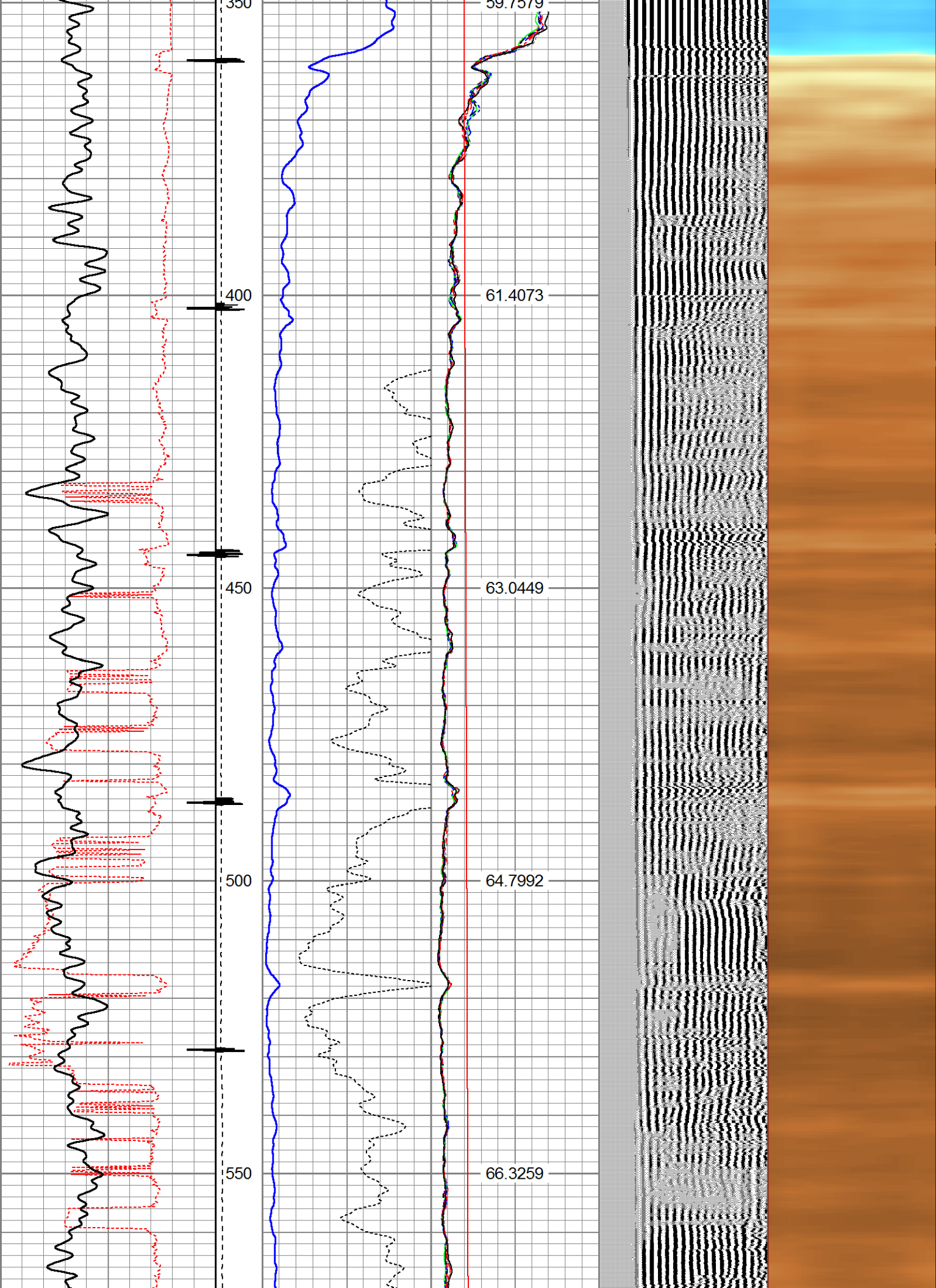
Dataset: oxy_riverbend38-12_0512333931.db: field/well/run1/pass3
 Total Length: 14.97 ft
 Total Weight: 155.00 lb
 O.D.: 2.75 in

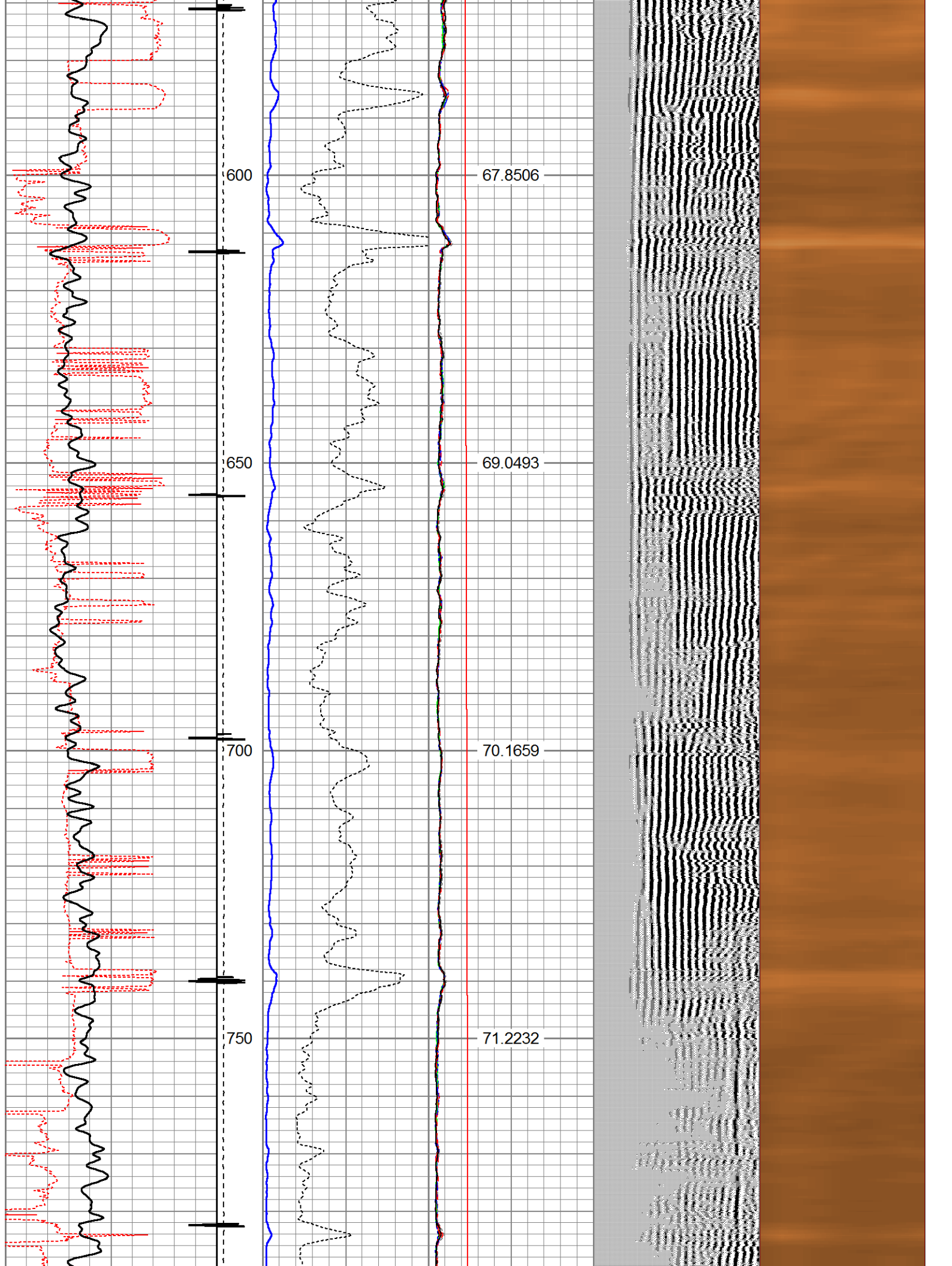
Database File: oxy_riverbend38-12_0512333931.db
 Dataset Pathname: pass3
 Presentation Format: rbl55
 Dataset Creation: Mon Feb 24 14:58:47 2020 by Log 7.0 B1
 Charted by: Depth in Feet scaled 1:240

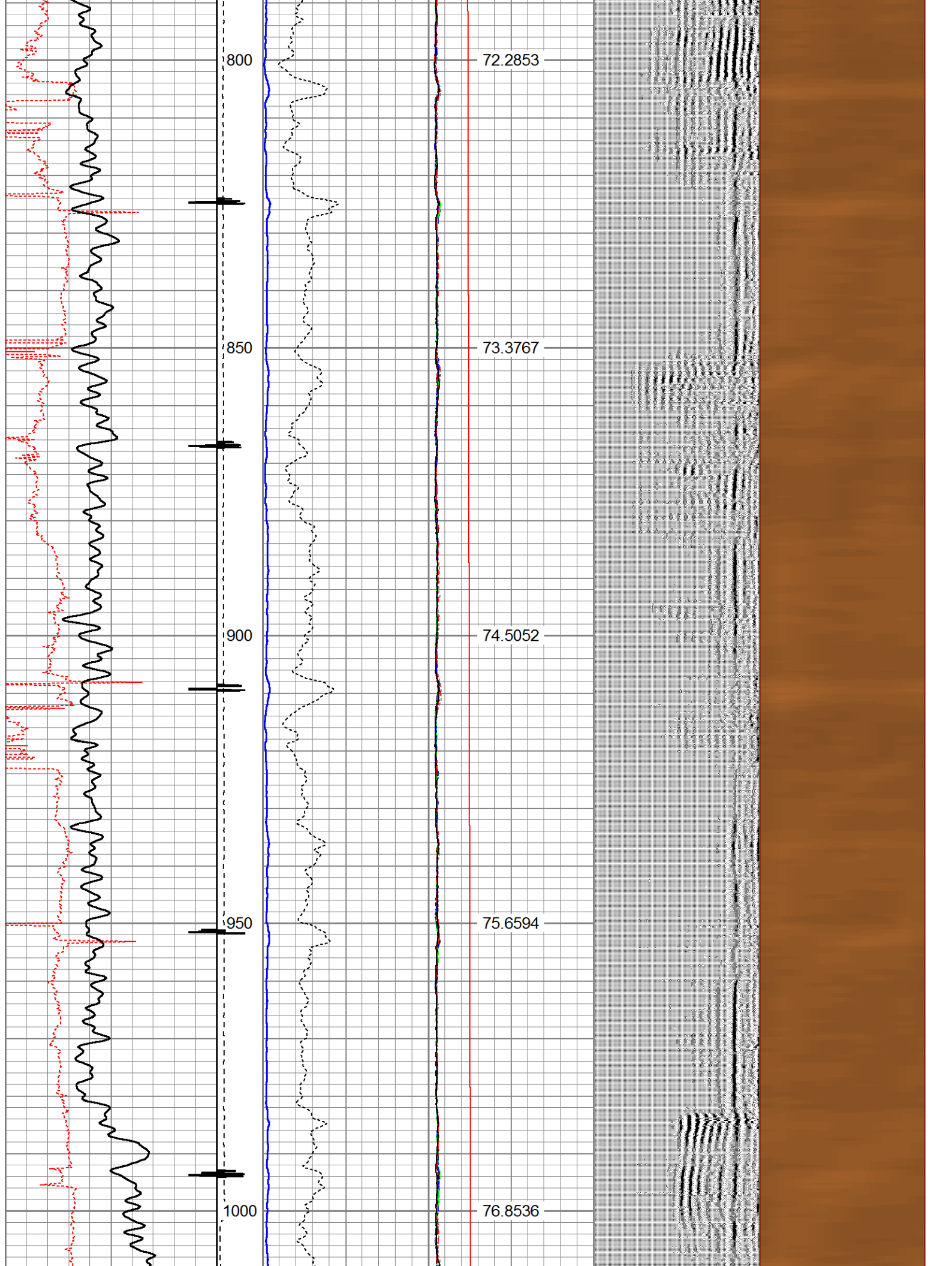
325	TT (usec)	225	LTEN	0	Amplitude (mV)	100	-5	AMPS2	150	200	VDL	1200	Cement Map
0	GR (GAPI)	200	(lb)	0	Amplified Amplitude	10	-5	AMPS3	150				1
			CCL	000	(mV)	10	-5	AMPS4	150				100
							-5	AMPS5	150				
							-5	AMPS6	150				
							-5	AMPS7	150				
							-5	AMPS8	150				
							-5	AMPS1	150				
								GCT_Temp					
							0	(degF)	300				
								GCT_Temp					
								(degF)					

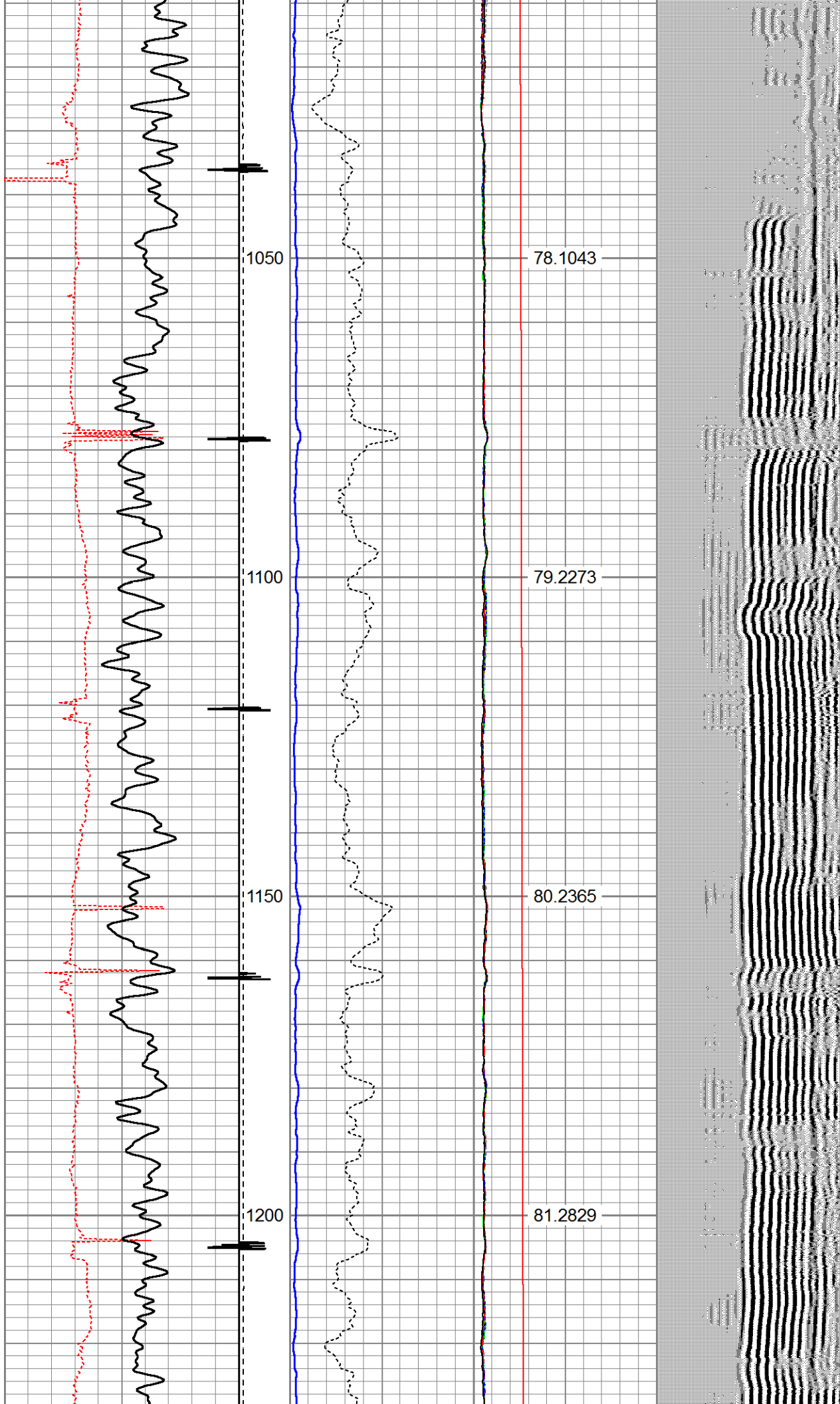












1050

78.1043

1100

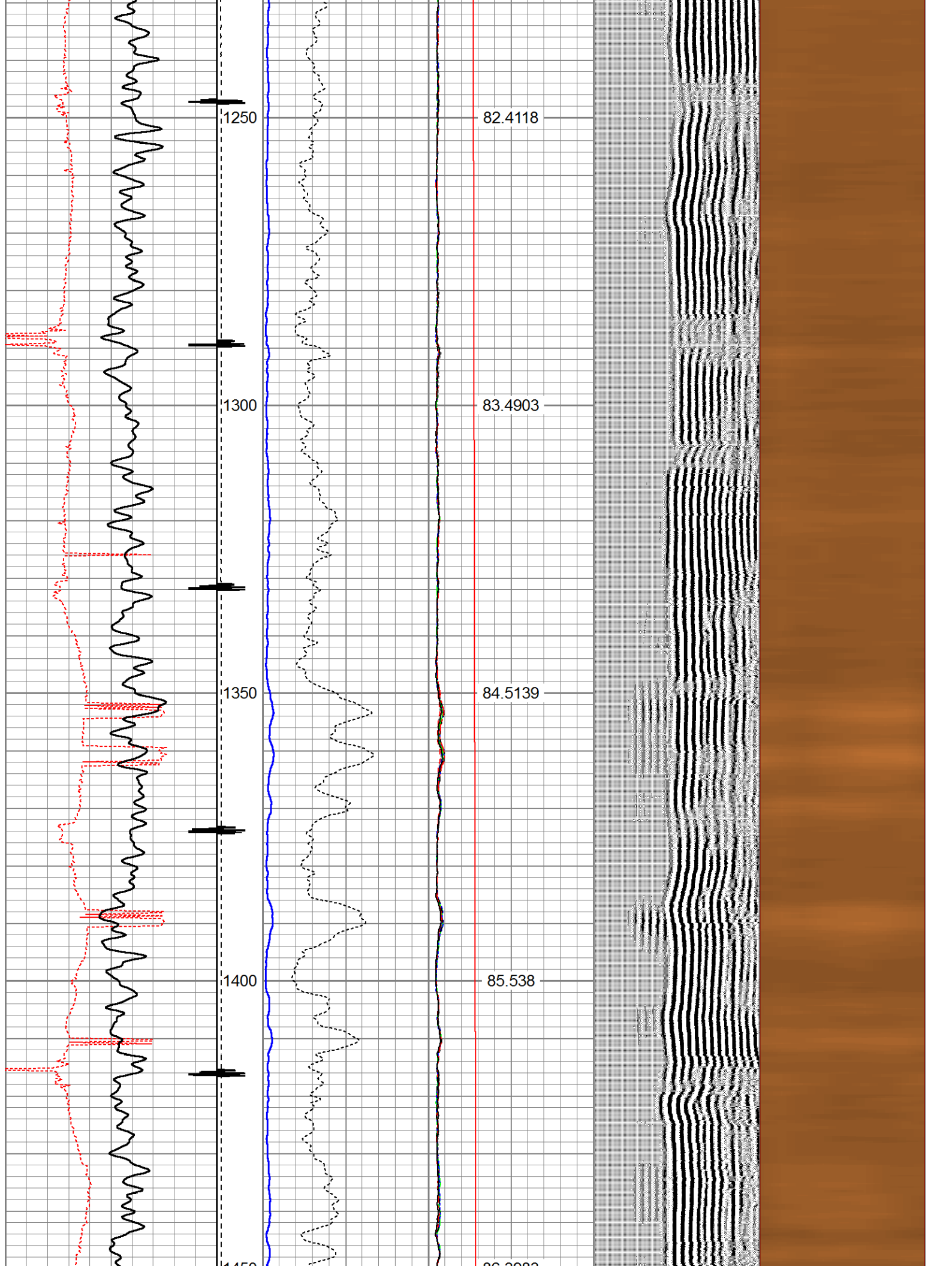
79.2273

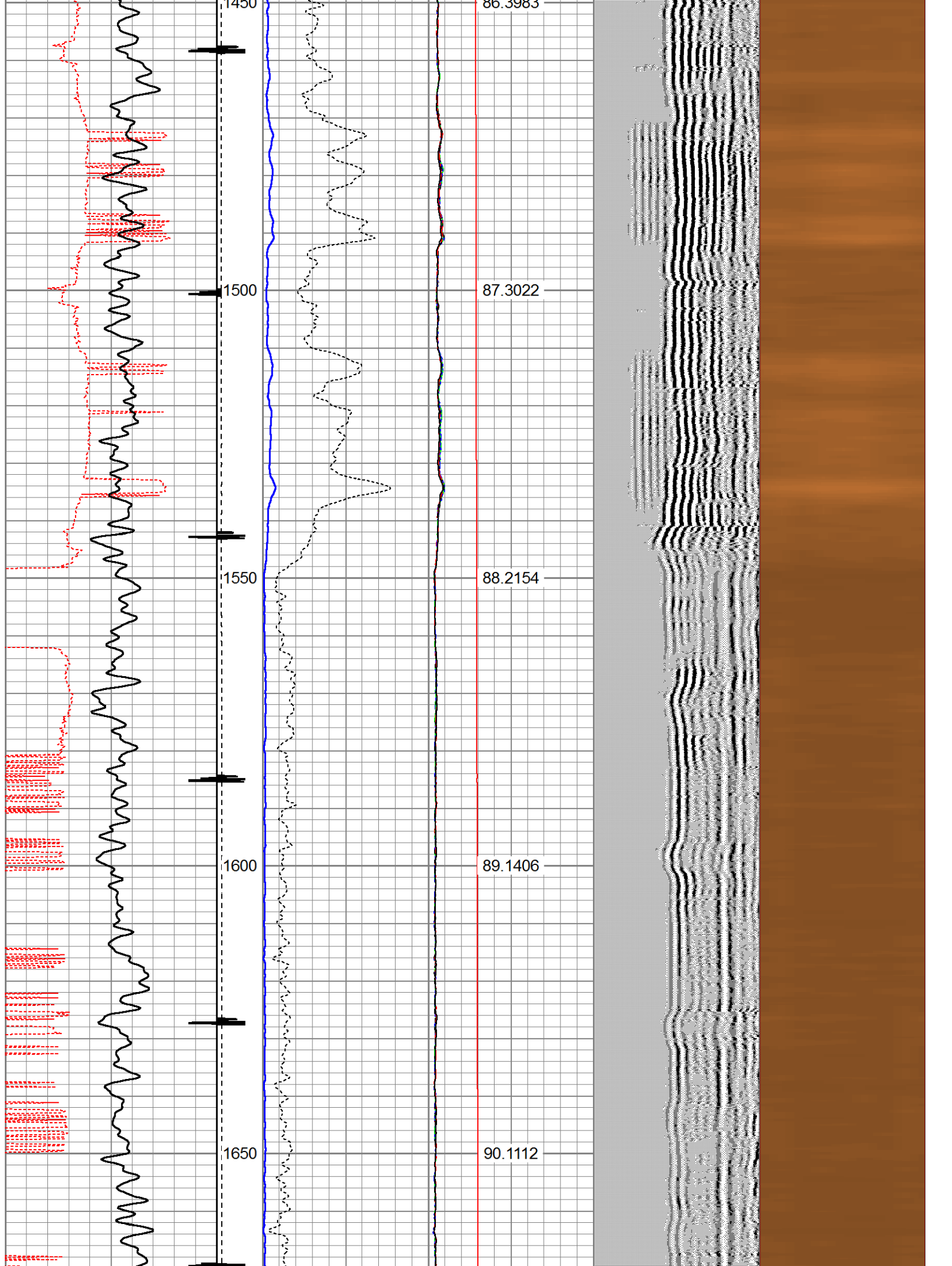
1150

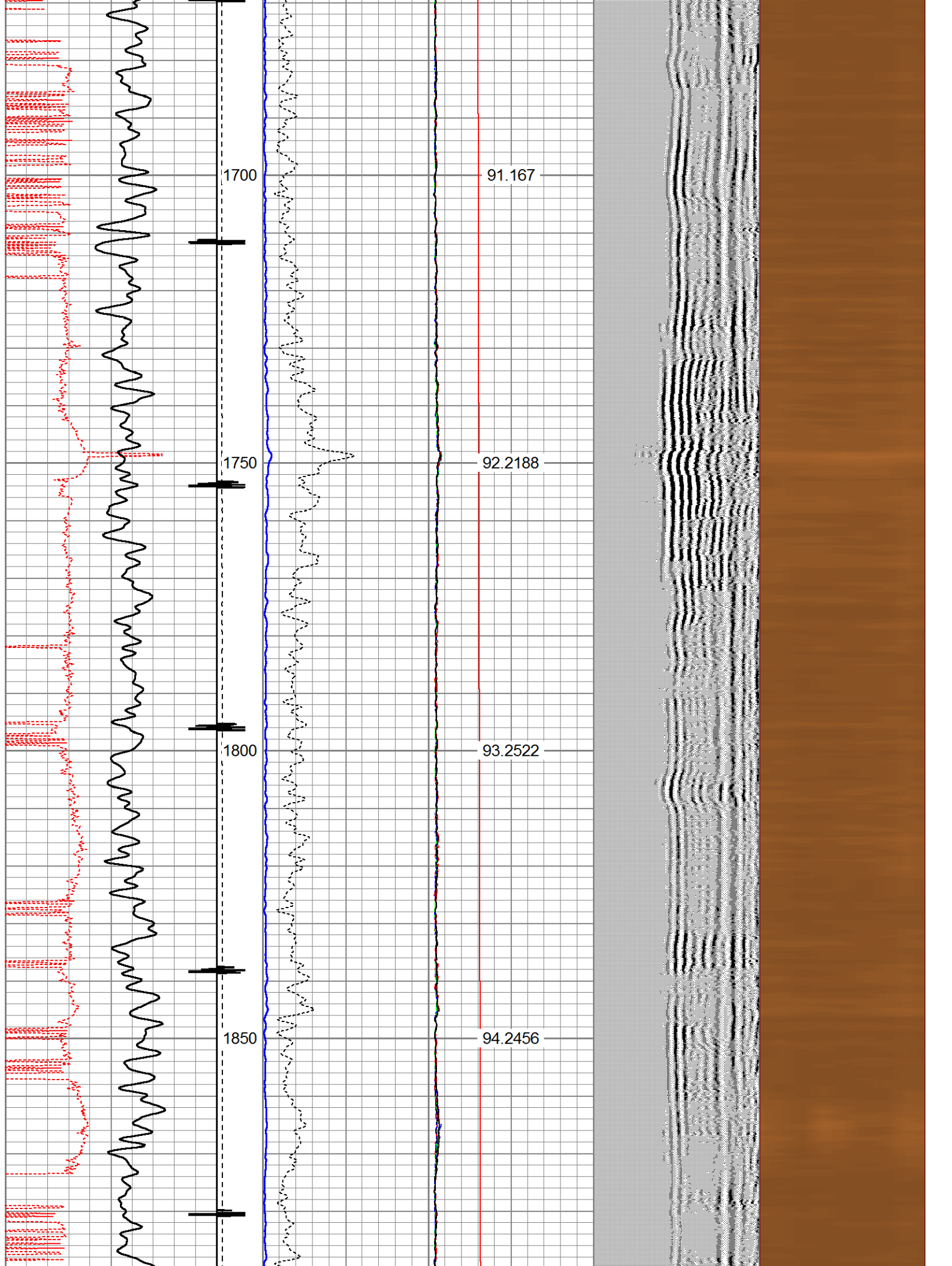
80.2365

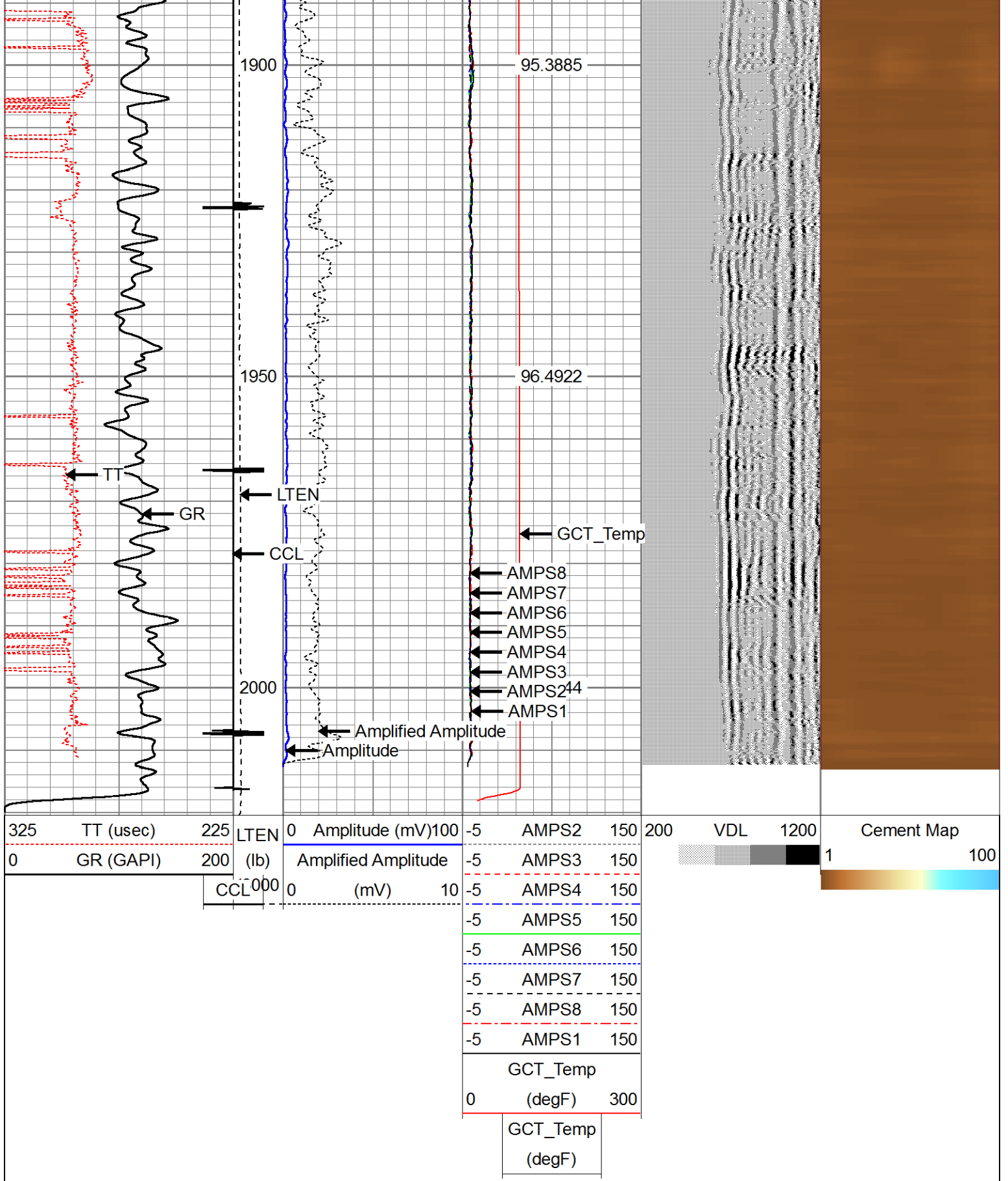
1200

81.2829









Company ANADARKO PETROLEUM CORP
 Well RIVERBEND 38-12
 Field WATTENBERG
 County WELD

State COLORADO