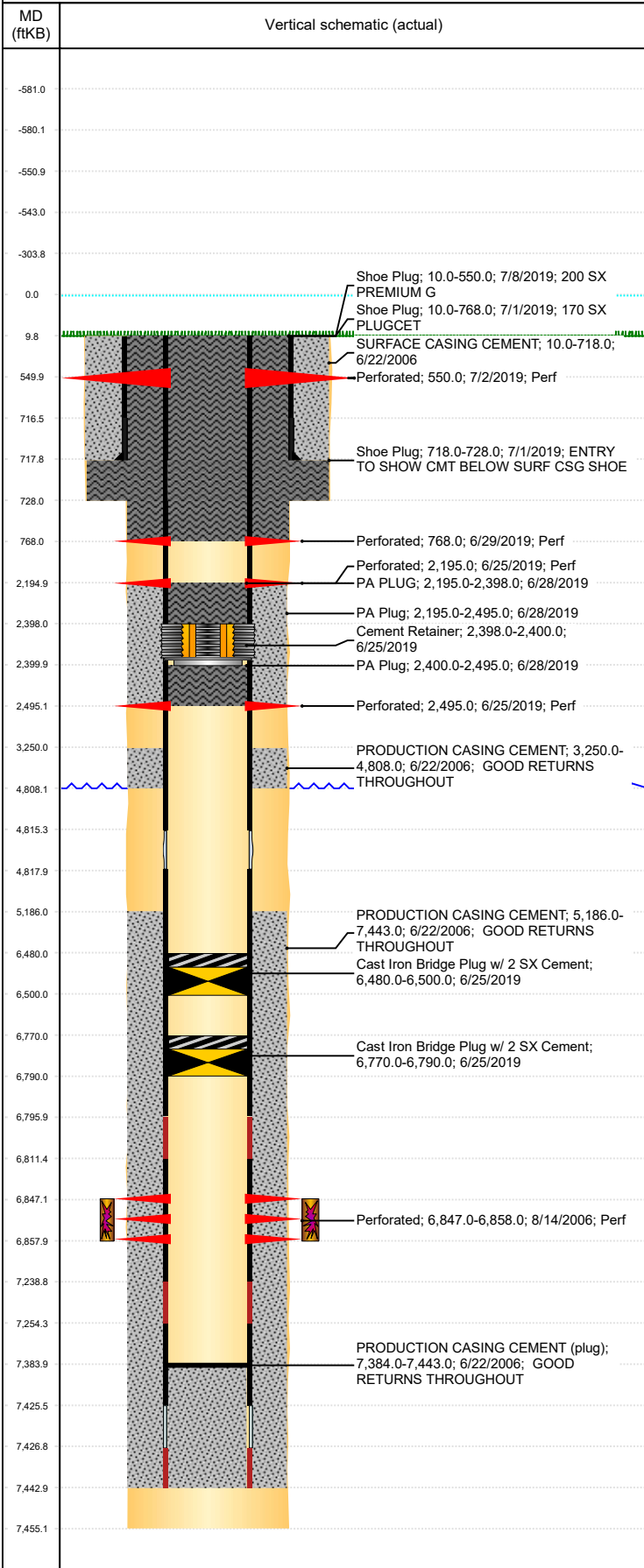


Well Name: KANGA STATE D36-01JI

VERTICAL, ORIGINAL HOLE, 4/17/2020 2:20:10 PM



Well Header									
API 05-123-23692		Business Unit DJ BASIN		District 15		Well Config VERTICAL			
KB - GL / MSL (ft... 10.00		Spud Date 6/18/2006		P & A Date		Well Production Status PA		SoRT Yes	
Comment DV TOOL @ 4815.3'. STATE SHOWS SHUT IN SINCE JAN 2017.									
Surface Location (Congressional)									
Qtr 3 NE	Qtr 4 NE	Section 36	Twonshp 3	Twonsh... N	Range 64	Rng E... W	Actual Latitude (°) 40.18707304	Actual Longitude (°) -104.49255134	
Wellbore Sections									
Section Des		Size (in)		Act Top, MD (ftKB)		Act Btm, MD (ftKB)			
SURFACE		12 1/4		10		728			
PRODUCTION		7 7/8		728		7,455			
Casing Strings									
Csg Des		Run Date		OD (in)		Wt/Len (lb/ft)		Grade	
Surface Casing		6/22/2006		8 5/8		24.00		J-55	
Production		6/22/2006		4 1/2		11.60		M-80	
Top, MD (ftKB)		MD (ftKB)							
10.0		718.0							
10.0		7,443.0							
Cement									
Des		Start Date		Top (ftKB)		Btm (ftKB)			
SURFACE CASING CEMENT		6/22/2006		10.0		718.0			
PRODUCTION CASING CEMENT		6/22/2006		3,250.0		4,808.0			
PRODUCTION CASING CEMENT		6/22/2006		5,186.0		7,443.0			
PA PLUG		6/28/2019		2,195.0		2,398.0			
PA Plug		6/28/2019		2,400.0		2,495.0			
PA Plug		6/28/2019		2,195.0		2,495.0			
Shoe Plug		7/1/2019		10.0		768.0			
Shoe Plug		7/1/2019		718.0		728.0			
Shoe Plug		7/8/2019		10.0		550.0			
Zone Statuses									
Zone Name		Status Date		Status		Fluid Type		Job	
CODELL		5/9/2017		SI					
CODELL		6/25/2019		P&A				PLUG AND ABANDON, 6/21/2019 14:00	
Perforation Data									
Linked Zone		Bnch/Stg		Entered Shot Total		Top (ftKB)		Btm (ftKB)	
				6		550.00		550.00	
				6		768.00		768.00	
				6		2,195.00		2,195.00	
				6		2,495.00		2,495.00	
CODELL, ORIGINAL HOLE				44		6,847.00		6,858.00	
Date									
7/2/2019									
6/29/2019									
6/25/2019									
6/25/2019									
8/14/2006									
Stimulation Intervals									
Zone		Start Date		Top (ftKB)		Btm (ftKB)			
CODELL, ORIGINAL HOLE		8/14/2006		6,847.0		6,858.0			
Other In Hole									
Run Date		Des		Make		OD (in)		Top (ftKB)	
3/2/2019		Plunger Lift				1 7/8			
6/25/2019		Cast Iron Bridge Plug w/ 2 SX Cement				4		6,770.0	
6/25/2019		Cast Iron Bridge Plug w/ 2 SX Cement				4		6,480.0	
6/25/2019		Cement Retainer				4		2,398.0	
6,790.0									
6,500.0									
6,480.0									
Logs									
Date		Type		Top, MD (ftKB)		Btm, MD (ftKB)			
6/22/2006		CBL/CCL/GR		3,086.0		7,382.0			
6/22/2006		COMPENSATED DENSITY		2,450.0		7,435.0			
6/22/2006		INDUCTION		10.0		7,455.0			
12/8/2017		GYRO		12.0		6,750.0			
Plug Back Total Depths									
Date		Type		Com		Depth (ftKB)			
6/22/2006		FLOAT COLLAR		4-1/2" WEATHERFORD FLOAT COLLAR		7,422.0			
6/22/2006		FILL		DEPTH LOGGER ON CBL		7,384.0			