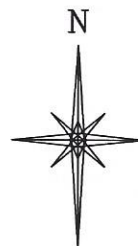
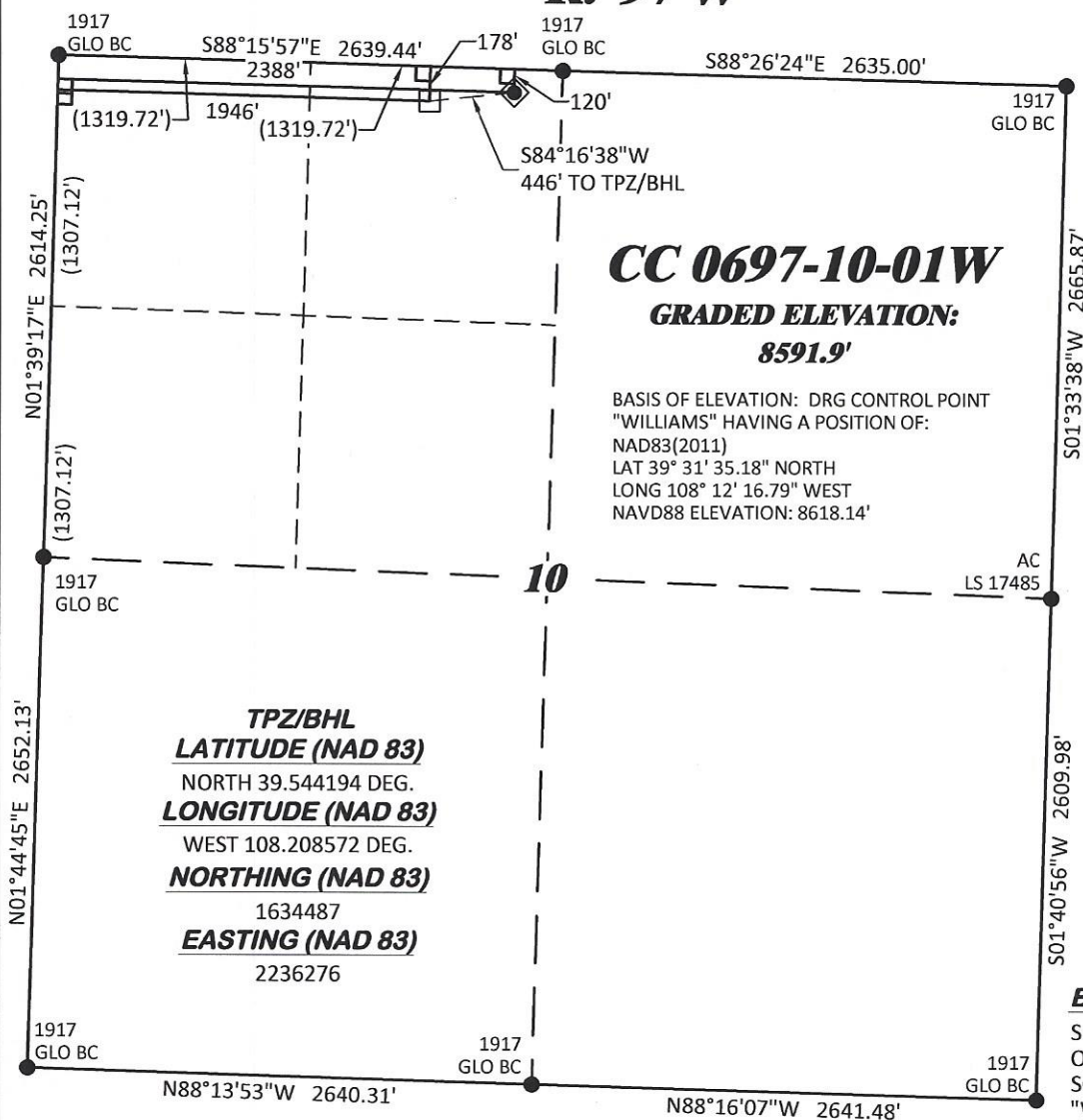


**R. 97 W**



GRID NORTH  
SCALE' 1" = 1000'  
500' 0 1000'

**T. 6 S.**

**SHL**

**LATITUDE (NAD 83)**

NORTH 39.544352 DEG.

**LONGITUDE (NAD 83)**

WEST 108.207003 DEG.

**NORTHING (NAD 83)**

1634531.65

**EASTING (NAD 83)**

2236720.35

**BASIS OF BEARING/DATUM**

SPCS COLORADO CENTRAL NAD 27 BASED  
ON GPS OBSERVATIONS AND OPUS  
SOLUTION ON DRG CONTROL POINT  
"WILLIAMS" HAVING A POSITION OF:  
NAD83(2011)  
LAT 39° 31' 35.18" NORTH  
LONG 108° 12' 16.79" WEST  
NAVD88 ELEVATION: 8618.14'

**NOTES**

1. GPS OPERATOR T. SHERRILL OBSERVED A PDOP OF 1.5.
2. ALL GPS OBSERVATIONS ARE IN COMPLIANCE WITH COGCC RULE No.215.
3. EXISTING IMPROVEMENTS WITHIN 500' OF LOCATION. SEE LOCATION DRAWING.
4. SURROUNDING SURFACE USE IS NATIVE BRUSH, NON CROP RANGELAND.

**LEGEND**

- ◆ WELL LOCATION
- APPROX. TPZ/BHL
- └ DENOTES 90° TIE
- FOUND MONUMENT

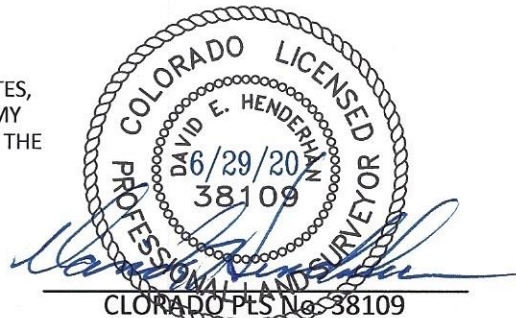
THE NORTH LINE OF THE NW 1/4 OF  
SECTION 10, MONUMENTED BY BLM BC'S  
AND BEARING  
S 88° 15' 57" E.

**SURVEYOR'S STATEMENT**

I, DAVID E HENDERHAN, AN EMPLOYEE AND AGENT ON BEHALF OF D.R. GRIFFIN & ASSOCIATES, INC. STATE THE PLAT HEREON IS A CORRECT REPRESENTATION OF A SURVEY MADE UNDER MY SUPERVISION ON THE 23rd DAY OF APRIL, 2020 OF THE SHOWN CC 0697-10-01W AND THAT THE LOCATION HAS BEEN STAKED ON THE GROUND AS SHOWN ON THIS PLAT.

Notice: In accordance with Colorado State Law, any legal action based upon any defect in this survey plat must commence within three (3) years after first discovery of such defect. In no event, may any action based upon any defect in this survey plat be commenced more than ten (10) years from the date of certification shown hereon.

**CC 610-21-41 PAD**



CLORADO PLS No 38109



**DAVID R. GRIFFIN & ASSOCIATES, INC.**  
1414 ELK ST., ROCK SPRINGS, WY 82901

(307) 362-5028

**DRAWN: 12/27/2017 - TCM/DEH**

**SCALE: 1" = 1000'**

**REVISED: 6/29/2020 - DEH**

**DRG JOB No. 21293**

**MISC. REVISIONS**

**EXHIBIT B2**

**PLAT OF DRILLING LOCATION IN  
NENW, SECTION 10, FOR  
LARAMIE ENERGY, LLC**

**120' F/NL, & 2388' F/WL, SECTION 10,  
T. 6 S., R. 97 W, 6TH P.M.,  
GARFIELD COUNTY, CLORADO**