

HALLIBURTON

iCem® Service

EXTRACTION OIL & GAS-EBUS

United States of America, COLORADO

United B S16-20-16C

Surface Casing

Sincerely,

Thomas Haas and Crew

Legal Notice

Disclaimer:

All information in this report is provided subject to the terms and conditions which govern the services provided by Halliburton. Halliburton personnel use their best efforts in gathering information and their best judgment in interpreting it, but any interpretation, research, analysis or recommendation furnished by Halliburton are opinions based upon inferences from measurements and empirical relationships and assumptions, which inferences and empirical relationships and assumptions are not infallible, and with respect to which professionals in the industry may differ. iCem 3D Displacement results are used to understand how fluids intermix during a cement job. Simulation and 3D displacement results are not intended as and should not be used as a replacement for bond logs in determining top of cement. Current 3D model calculations are known to model more volume than the input volume for standard cases due to known calculation improvements required. For rotational cases, the modeled volume will be impacted by the same calculations impacting the standard cases, as well as additional constraints imposed to make the calculation time required operationally feasible. Therefore, until further notice, 3D displacement results should not be used for replacement of a bond log, or used as an identifier of top of cement. HALLIBURTON IS UNABLE TO GUARANTEE THE ACCURACY OF ANY CHART INTERPRETATION, RESEARCH ANALYSIS, OR JOB RECOMMENDATION and any interpretation or recommendation is not for use of or reliance upon by any third party. The customer has full responsibility for any of its decisions which are based on the information provided in this report.

Table of Contents

1.0 Cementing Job Summary4

 1.1 Executive Summary 4

2.0 Real-Time Job Summary7

 2.1 Job Event Log 7

3.0 Attachments.....10

 3.1 Extraction Surface United B S16-20-16C-Custom Results.png 10

 3.2 Extraction Surface United B S16-20-16C-Custom Results (1).png 11

1.0 Cementing Job Summary

1.1 Executive Summary

Halliburton appreciates the opportunity to perform the cementing services on the United B S16-20-16C surface casing. A pre-job safety meeting was held before the job where details of the job were discussed, potential safety hazards were reviewed, and environmental compliance procedures were outlined.

Approximately 26 bbls of cement were returned to surface.

Halliburton maintains a continuous quality improvement process and appreciates any comments or suggestions that you may have. Halliburton again thanks you for the opportunity to perform service work on this well. We hope to be your solutions provider for future projects.

Respectfully,

Halliburton Fort Lupton

The Road to Excellence Starts with Safety

Sold To #: 369404		Ship To #: 3909410		Quote #:		Sales Order #: 0906524770				
Customer: EXTRACTION OIL & GAS-EBUS				Customer Rep: Manny Parras						
Well Name: UNITED B			Well #: S16-20-16C			API/UWI #: 05-014-20810-00				
Field: WATTENBERG		City (SAP): BROOMFIELD		County/Parish: BROOMFIELD		State: COLORADO				
Legal Description: NE NE-9-1S-68W-454FNL-920FEL										
Contractor: ENSIGN DRLG				Rig/Platform Name/Num: ENSIGN 147						
Job BOM: 7521 7521										
Well Type: HORIZONTAL OIL										
Sales Person: HALAMERICA\HX41066				Srvc Supervisor: Thomas Haas						
Job										
Formation Name										
Formation Depth (MD)		Top			Bottom					
Form Type				BHST						
Job depth MD		16222ft		Job Depth TVD		1622				
Water Depth				Wk Ht Above Floor		4				
Perforation Depth (MD)		From			To					
Well Data										
Description	New / Used	Size in	ID in	Weight lbm/ft	Thread	Grade	Top MD ft	Bottom MD ft	Top TVD ft	Bottom TVD ft
Casing		9.625	8.921	36			0	1622	0	0
Open Hole Section			13.5				0	1629	0	1629
Tools and Accessories										
Type	Size in	Qty	Make	Depth ft		Type	Size in	Qty	Make	
						Top Plug	9.625	1	HES	
Float Shoe	9.625	1	TOPCO	1622						
Float Collar	9.625	1	TOPCO	1578						
						Plug Container	9.625	1	HES	
Fluid Data										
Stage/Plug #: 1										
Fluid #	Stage Type	Fluid Name		Qty	Qty UoM	Mixing Density lbm/gal	Yield ft3/sack	Mix Fluid Gal	Rate bbl/min	Total Mix Fluid Gal
1	Water with dye	Water with dye		10	bbl	8.34			4	

Fluid #	Stage Type	Fluid Name	Qty	Qty UoM	Mixing Density lbm/gal	Yield ft3/sack	Mix Fluid Gal	Rate bbl/min	Total Mix Fluid Gal
2	SwiftCem	SWIFTCEM (TM) SYSTEM	550	sack	13.5	1.74	9.17	8	5032
9.17 Gal		FRESH WATER							
0.1250 lbm		POLY-E-FLAKE (101216940)							
Fluid #	Stage Type	Fluid Name	Qty	Qty UoM	Mixing Density lbm/gal	Yield ft3/sack	Mix Fluid Gal	Rate bbl/min	Total Mix Fluid Gal
3	Displacement	Displacement	122	bbl	8.34			10	
Cement Left In Pipe		Amount	44 ft		Reason			Shoe Joint	
Mix Water:		pH 7	Mix Water Chloride:		<300 ppm		Mix Water Temperature:		62 °F
Cement Temperature:			Plug Displaced by:		8.33 lb/gal F.W.		Disp. Temperature:		62 °F
Plug Bumped?		Yes	Bump Pressure:		560 psi		Floats Held?		Yes
Cement Returns:		26 bbl	Returns Density:				Returns Temperature:		
Comment Plug bumped at calculated displacement, final circulating pressure of 560 psi, floats held, .5 bbl back. 26 bbl of cement to surface.									

2.0 Real-Time Job Summary

2.1 Job Event Log

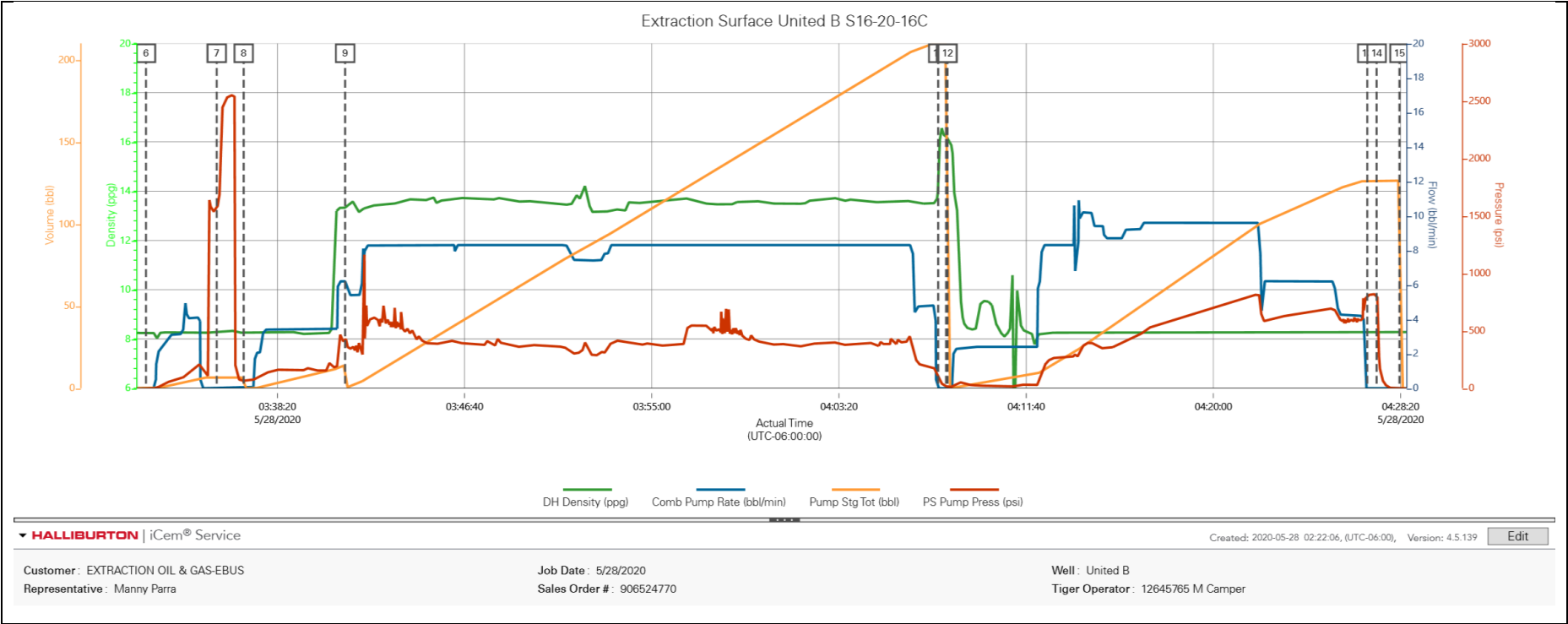
Type	Seq. No.	Activity	Graph Label	Date	Time	Source	DH Density (ppg)	Comb Pump Rate (bbl/min)	Pump Stg Tot (bbl)	PS Pump Press (psi)	Comments
Event	1	Call Out	Call Out	5/27/2020	21:00:00	USER					CREW CALLED OUT AT 21:00 5/27/2020, REQUESTED ON LOCATION 03:30 5/28/2020. CREW PICKED UP CEMENT, 100 LBS SUGAR, AND PLUG CONTAINER FROM FORT LUPTON, CO. BULK 660: 11562546/11633848 PUMP RED TIGER: 12645765.
Event	2	Arrive At Loc	Arrive At Loc	5/28/2020	00:00:00	USER					CREW HAULED CEMENT IN BETWEEN JOBS. MEET WITH CO. MAN TO DISCUSS JOB; SURFACE CASING: 9.625" 36# @ 1622', 44' SHOE TRACK, OH 13.5", 8.7 PPG WELL FLUID, FRESH WATER DISPLACEMENT.
Event	3	Pre-Rig Up Safety Meeting	Pre-Rig Up Safety Meeting	5/28/2020	02:00:00	USER					HAZARD HUNT. DISCUSSED POSSIBLE HAZARDS ASSOCIATED WITH LOCATION, RIG UP AND WEATHER.
Event	4	Rig-Up Equipment	Rig-Up Equipment	5/28/2020	02:10:00	USER					CREW STAGED EQUIPMENT AND RIGGED UP BULK, IRON, AND WATER HOSES TO PERFORM JOB.

Event	5	Pre-Job Safety Meeting	Pre-Job Safety Meeting	5/28/2020	03:00:00	USER	8.25	0.00	0.00	-10.00	MEETING WITH HALLIBURTON AND RIG PERSONNEL. COMMUNICATED POTENTIAL SAFETY HAZARDS AND JOB DETAILS.
Event	6	Start Job	Start Job	5/28/2020	03:32:29	COM10	8.25	0.00	0.00	-5.00	START JOB DATA RECORDING.
Event	7	Test Lines	Test Lines	5/28/2020	03:35:38	COM10	8.30	0.00	6.50	1580.00	PRESSURE TESTED IRON TO 2500 PSI. KICKOUTS SET @ 500 PSI, KICKED OUT @ 1180 PSI, 5TH GEAR STALL OUT @1680 PSI.
Event	8	Pump Spacer 1	Pump Spacer 1	5/28/2020	03:36:50	COM10	8.26	0.00	0.00	65.00	PUMP 10 BBL OF FRESH WATER WITH RED DYE.
Event	9	Pump Lead Cement	Pump Lead Cement	5/28/2020	03:41:21	COM10	13.32	6.20	0.10	432.00	PUMP 550 SKS OF SWIFTCEM @ 13.5 LB/GAL, 1.74 YIELD, 9.17 GAL/SK, 170 BBLs, TOL @ SURFACE, DENSITY VERIFIED BY PRESSURIZED MUD SCALES.
Event	10	Shutdown	Shutdown	5/28/2020	04:07:45	COM10	13.99	0.00	210.50	95.00	SHUTDOWN TO DROP TOP PLUG,
Event	11	Drop Top Plug	Drop Top Plug	5/28/2020	04:08:06	COM10	16.25	0.00	210.50	16.00	PLUG LEFT PLUG CONTAINER, VERIED BY COMPANY MAN.
Event	12	Pump Displacement	Pump Displacement	5/28/2020	04:08:10	COM10	16.19	0.00	0.00	13.00	BEGIN PUMPING 122 BBL OF FRESH WATER DISPLACEMENT.
Event	13	Bump Plug	Bump Plug	5/28/2020	04:26:51	COM10	8.30	0.00	126.40	807.00	PLUG BUMPED AT CALCULATED DISPLACEMENT, FINAL CIRCULATING PRESSURE OF 560 PSI. 26 BBL OF CEMENT BACK TO SURFACE.

Event	14	Check Floats	Check Floats	5/28/2020	04:27:16	USER	8.30	0.00	126.40	816.00	RELEASED PRESSURE BACK TO THE TRUCK, FLOATS HELD, .5 BB BACK.
Event	15	End Job	End Job	5/28/2020	04:28:17	COM10	8.28	0.00	126.40	-6.00	
Event	16	Pre-Rig Down Safety Meeting	Pre-Rig Down Safety Meeting	5/28/2020	07:00:00	USER					DISCUSSED POSSIBLE HAZARDS ASSOCIATED WITH WEATHER, LOCATION AND RIGGING DOWN IRON AND HOSES.
Event	17	Rig-Down Completed	Rig-Down Completed	5/28/2020	07:10:00	USER					ALL HALLIBURTON ITEMS WERE STOWED FOR TRAVEL.

3.0 Attachments

3.1 Extraction Surface United B S16-20-16C-Custom Results.png



3.2 Extraction Surface United B S16-20-16C-Custom Results (1).png

Extraction Surface United B S16-20-16C						
Description	Actual Time (UTC-06:00:00)	DH Density (ppg)	Comb Pump Rate (bbl/min)	Pump Stg Tot (bbl)	PS Pump Press (psi)	
6 Start Job	03:32:29	8.25	0.00	0.00	-5.00	
7 Test Lines	03:35:38	8.30	0.00	6.50	1580.00	
8 Pump Spacer 1	03:36:50	8.26	0.00	0.00	65.00	
9 Pump Lead Cement	03:41:21	13.32	6.20	0.10	432.00	
10 Shutdown	04:07:45	13.99	0.00	210.50	95.00	
11 Drop Top Plug	04:08:06	16.25	0.00	210.50	16.00	
12 Pump Displacement	04:08:10	16.19	0.00	0.00	13.00	
13 Bump Plug	04:26:51	8.30	0.00	126.40	807.00	
14 Check Floats	04:27:16	8.30	0.00	126.40	816.00	
15 End Job	04:28:17	8.28	0.00	126.40	-6.00	

HALLIBURTON | iCem® Service

Created: 2020-05-28 02:22:06, (UTC-06:00), Version: 4.5.139

Edit

Customer: EXTRACTION OIL & GAS-EBUS
Representative: Manny Parra

Job Date: 5/28/2020
Sales Order #: 906524770

Well: United B
Tiger Operator: 12645765 M Camper