

SHL Layout Detail
N.T.S.

- 12C-23 ◦ 12A-23
12D-23 ◦ 12B-23
13C-23 ◦ 13A-23
13D-23 ◦ 13B-23
14A-23 ◦ 24D-23
23D-22 ◦ 25A-23
24A-22 ◦ 24B-22
24C-22 ◦ 25B-23
14D-23 ◦ 25C-23
15A-23 ◦ 15B-23
24D-22 ◦ 25B-22
25C-22 ◦ 21B-26
25D-22 ◦ 15C-23
26A-22 ◦

- LEGEND:**
◈ = TOP OF GAS INTERVAL.
◉ = TARGET BOTTOM HOLE.
◉ = BOTTOM HOLE.

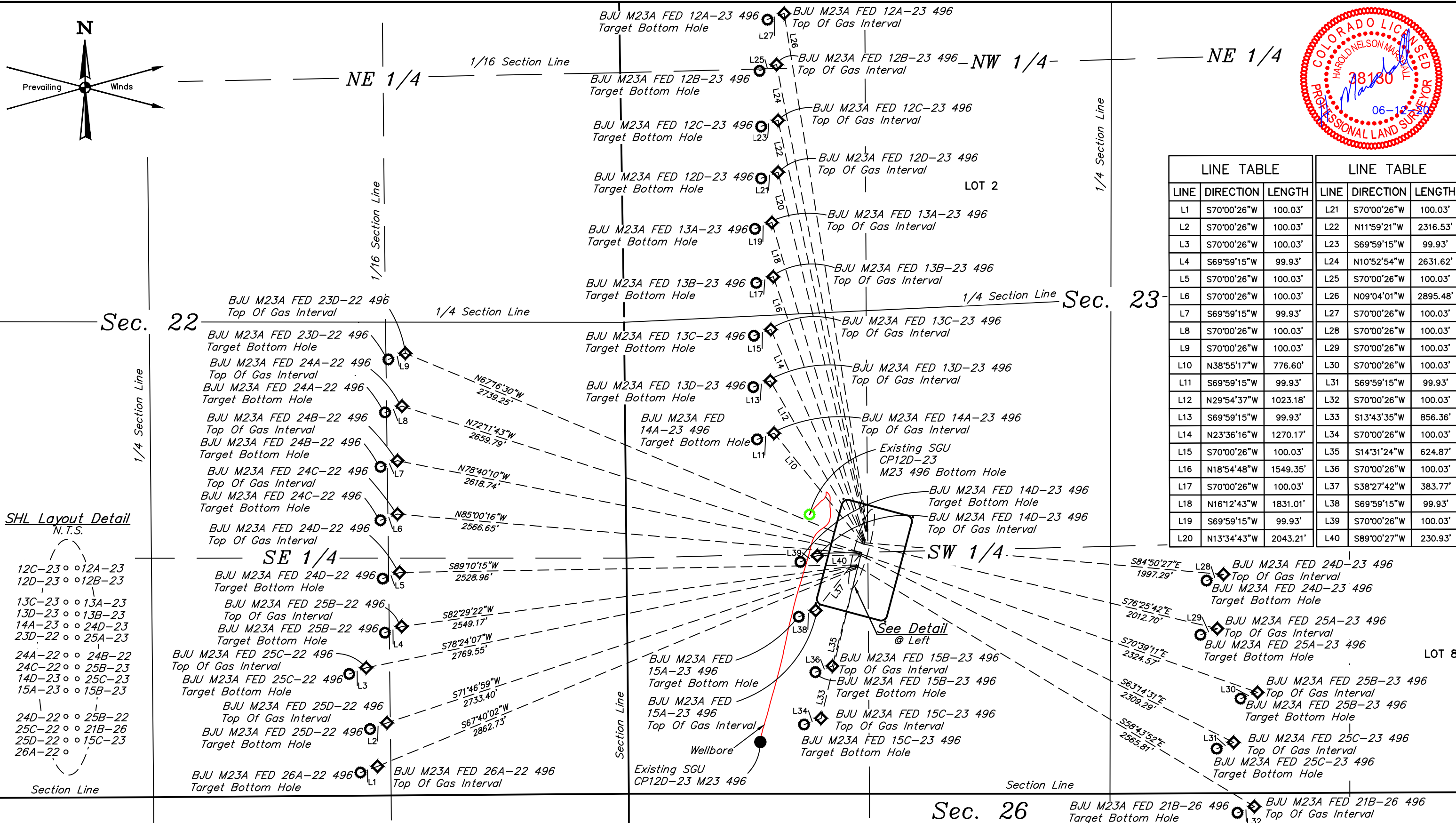
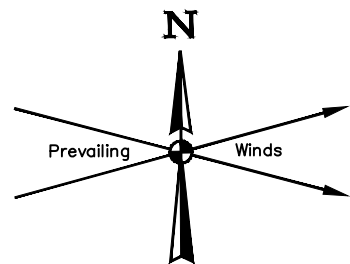


UELS, LLC
Corporate Office * 85 South 200 East
Vernal, UT 84078 * (435) 789-1017

Caerus Oil & Gas LLC

BJU M23A 496 PAD
W 1/2 SW 1/4, SECTION 23, T4S, R96W, 6th P.M.
GARFIELD COUNTY, COLORADO

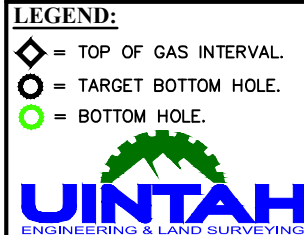
SURVEYED BY	BART HUNTING, D.S.	03-18-20	SCALE
DRAWN BY	T.L.L.	06-10-20	1" = 80'
MULTI-WELL PLAN		FIGURE #5	



SHL Layout Detail
N.T.S.

- 12C-23 ° 12A-23
12D-23 ° 12B-23
- 13C-23 ° 13A-23
13D-23 ° 13B-23
14A-23 ° 14D-23
23D-22 ° 25A-23
- 24A-22 ° 24B-22
24C-22 ° 25B-23
14D-23 ° 25C-23
15A-23 ° 15B-23
- 24D-22 ° 25B-22
25C-22 ° 21B-26
25D-22 ° 15C-23
26A-22 °

LINE TABLE			LINE TABLE		
LINE	DIRECTION	LENGTH	LINE	DIRECTION	LENGTH
L1	S70°00'26"W	100.03'	L21	S70°00'26"W	100.03'
L2	S70°00'26"W	100.03'	L22	N11°59'21"W	2316.53'
L3	S70°00'26"W	100.03'	L23	S69°59'15"W	99.93'
L4	S69°59'15"W	99.93'	L24	N10°52'54"W	2631.62'
L5	S70°00'26"W	100.03'	L25	S70°00'26"W	100.03'
L6	S70°00'26"W	100.03'	L26	N09°04'01"W	2895.48'
L7	S69°59'15"W	99.93'	L27	S70°00'26"W	100.03'
L8	S70°00'26"W	100.03'	L28	S70°00'26"W	100.03'
L9	S70°00'26"W	100.03'	L29	S70°00'26"W	100.03'
L10	N38°55'17"W	776.60'	L30	S70°00'26"W	100.03'
L11	S69°59'15"W	99.93'	L31	S69°59'15"W	99.93'
L12	N29°54'37"W	1023.18'	L32	S70°00'26"W	100.03'
L13	S69°59'15"W	99.93'	L33	S13°43'35"W	856.36'
L14	N23°36'16"W	1270.17'	L34	S70°00'26"W	100.03'
L15	S70°00'26"W	100.03'	L35	S14°31'24"W	624.87'
L16	N18°54'48"W	1549.35'	L36	S70°00'26"W	100.03'
L17	S70°00'26"W	100.03'	L37	S38°27'42"W	383.77'
L18	N16°12'43"W	1831.01'	L38	S69°59'15"W	99.93'
L19	S69°59'15"W	99.93'	L39	S70°00'26"W	100.03'
L20	N13°34'43"W	2043.21'	L40	S89°00'27"W	230.93'



UELS, LLC
Corporate Office * 85 South 200 East
Vernal, UT 84078 * (435) 789-1017

Caerus Oil & Gas LLC

BJU M23A 496 PAD
W 1/2 SW 1/4, SECTION 23, T4S, R96W, 6th P.M.
GARFIELD COUNTY, COLORADO

SURVEYED BY	BART HUNTING, D.S.	03-18-20	SCALE
DRAWN BY	T.L.L.	06-10-20	1" = 500'

TARGET BOTTOM HOLE DRAWING **FIGURE #5A**