

T4S, R96W, 6th P.M.

Caerus Oil & Gas LLC

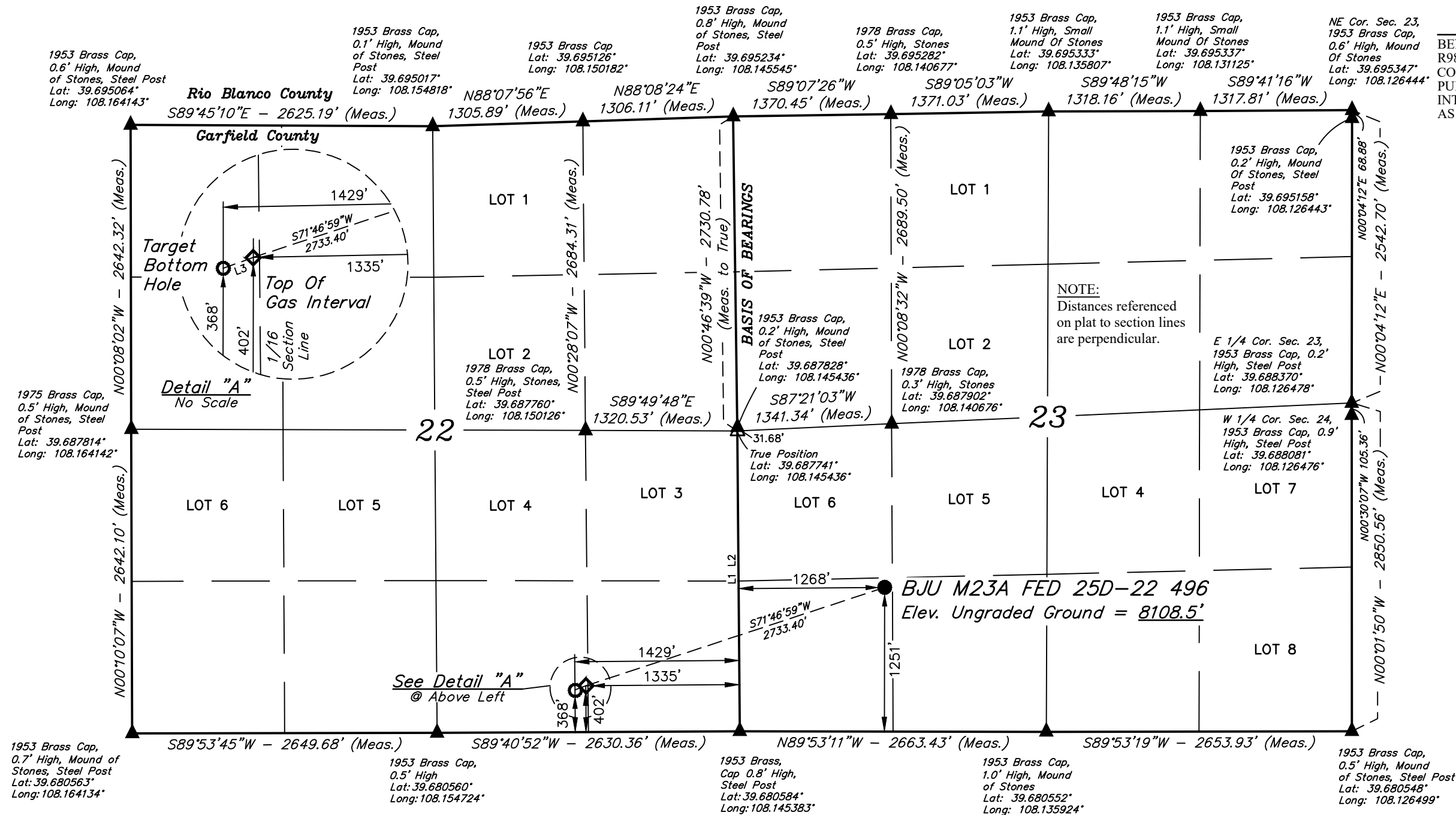
BJU M23A FED 25D-22 496  
SW 1/4 SW 1/4, SECTION 23, T4S, R96W, 6th P.M.  
GARFIELD COUNTY, COLORADO

BASIS OF BEARINGS

BEARINGS ARE BASED ON THE ASSUMPTION THAT THE WEST  
LINE OF THE NORTHWEST 1/4 OF SECTION 23  
BEARS N00°46'39"W. MONUMENTS DESCRIBED HEREON.

BASIS OF ELEVATION

BENCH MARK (H79) LOCATED IN THE NE 1/4 OF SECTION 35, T4S,  
R98W, 6th P.M., TAKEN FROM THE BULL FORK QUADRANGLE,  
COLORADO, 7.5 MINUTE SERIES. (TOPOGRAPHIC MAP)  
PUBLISHED BY THE UNITED STATES DEPARTMENT OF THE  
INTERIOR, GEOLOGICAL SURVEY. SAID ELEVATION IS MARKED  
AS BEING 8535 FEET.



- LEGEND:
- = PROPOSED WELLHEAD.
  - ◇ = TOP OF GAS INTERVAL.
  - = TARGET BOTTOM HOLE.
  - ▲ = SECTION CORNERS LOCATED. (NAD 83)
  - △ = SECTION CORNERS RE-ESTABLISHED. (Not Set on Ground.) (NAD 83)

LINE TABLE			
LINE	DIRECTION	LENGTH	Description
L1	N00°27'48"W	2608.13'	(Meas. to True)
L2	N00°27'48"W	2639.81'	(Meas. to W.C.)
L3	S70°00'26"W	100.03'	(TGI to TBH)

NAD 83 (SURFACE LOCATION)	NAD 83 (TOP OF GAS INTERVAL)	NAD 83 (TARGET BOTTOM HOLE)
LATITUDE = 39°41'02.41" (39.684002)	LATITUDE = 39°40'54.03" (39.681674)	LATITUDE = 39°40'53.69" (39.681581)
LONGITUDE = 108°08'27.25" (108.140904)	LONGITUDE = 108°09'00.47" (108.150132)	LONGITUDE = 108°09'01.68" (108.150466)
NAD 27 (SURFACE LOCATION)	NAD 27 (TOP OF GAS INTERVAL)	NAD 27 (TARGET BOTTOM HOLE)
LATITUDE = 39°41'02.50" (39.684027)	LATITUDE = 39°40'54.12" (39.681699)	LATITUDE = 39°40'53.78" (39.681605)
LONGITUDE = 108°08'24.96" (108.140268)	LONGITUDE = 108°08'58.18" (108.149496)	LONGITUDE = 108°08'59.39" (108.149830)
UTM NAD 27 (ZONE 12)	UTM NAD 27 (ZONE 12)	UTM NAD 27 (ZONE 12)
N: 14423819.14 E: 2445049.83	N: 14422888.59 E: 2442479.95	N: 14422851.63 E: 2442387.01

PDOP = 1.3



UELS, LLC  
Corporate Office \* 85 South 200 East  
Vernal, UT 84078 \* (435) 789-1017

SURVEYED BY	DAYTON SLAUGH, B.H.	05-27-20	SCALE
DRAWN BY	T.L.L.	06-11-20	1" = 1000'

WELL LOCATION PLAT

CERTIFICATION  
THIS IS TO CERTIFY THAT THE ABOVE PLAT WAS PREPARED AND  
LOCATION AS SHOWN WAS STAKED ON THE GROUND FROM FIELD NOTES  
OF ACTUAL SURVEYS MADE BY ME OR UNDER MY SUPERVISION AND THAT  
THE SAME ARE TRUE AND CORRECT TO THE BEST OF MY KNOWLEDGE AND  
BELIEF.  
REGISTERED LAND SURVEYOR  
REGISTRATION NO. 38130  
STATE OF COLORADO  
66-012-20