

Project: Garfield County, CO
 Site: BJU M23A 496 Pad
 Well: BJU M23A FED 25A-23 496
 Wellbore: Wellbore #1
 Design: Design #1
 Latitude: 39.684384
 Longitude: -108.140106
 Ground Level: 8104.0
 RKB @ 8134.0usft (30')

PROJECT DETAILS: Garfield County, CO

Geodetic System: Universal Transverse Mercator (US Survey Feet)
 Datum: NAD 1927 - Western US
 Ellipsoid: Clarke 1866
 Zone: Zone 12N (114 W to 108 W)
 System Datum: Mean Sea Level

REFERENCE INFORMATION

Vertical (TVD) Reference: RKB @ 8134.0usft (30')
 Section (VS) Reference: Slot - BJU M23A FED 25A-23 496(0.0N, 0.0E)
 Measured Depth Reference: RKB @ 8134.0usft (30')
 Calculation Method: Minimum Curvature

FORMATION TOP DETAILS

TVDPath	MDPath	Formation
3458.0	3563.6	Wasatch
5858.0	6050.4	Wasatch G
6158.0	6361.3	Fort Union
8126.0	8388.3	Ohio Creek
8126.0	8388.3	TOG
8505.0	8767.4	William Fork
11438.0	11701.3	Cameo
11938.0	12201.5	Rollins

SECTION DETAILS

MD	Inc	Azi	TVD	+N/-S	+E/-W	Dieg	TFace	VSect	Annotation
0.0	0.00	0.00	0.0	0.0	0.0	0.00	0.00	0.0	
200.0	0.00	0.00	200.0	0.0	0.0	0.00	0.00	0.0	Build 3° / 100'
706.1	15.18	103.57	700.2	-15.6	64.8	3.00	103.57	66.6	EOB @ 15.18° Inc. / 103.57° Azm
7882.2	15.18	103.57	7625.8	-456.7	1891.7	0.00	0.00	1945.2	Drop 3° / 100'
8388.3	0.00	0.00	8126.0	-472.3	1956.5	3.00	180.00	2011.8	EOD @ Vertical / Build 1.5° / 100'
8484.6	1.45	250.00	8222.3	-472.8	1955.3	1.50	250.00	2010.9	EOB @ 1.44° Inc. / 250.00° Azm
12401.5	1.45	250.00	12138.0	-506.5	1862.5	0.00	0.00	1930.1	TD @ 12401.5' MD / 12138.0' TVD

DESIGN TARGET DETAILS

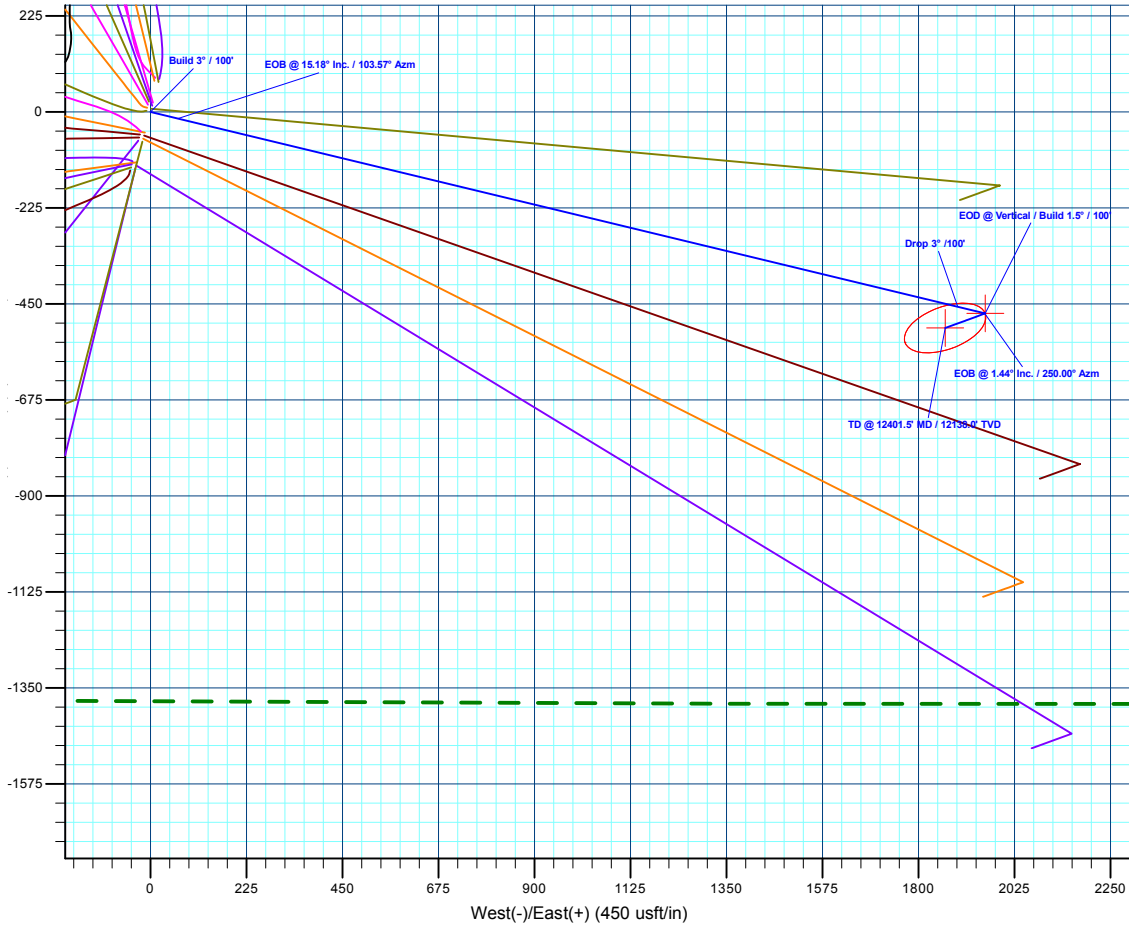
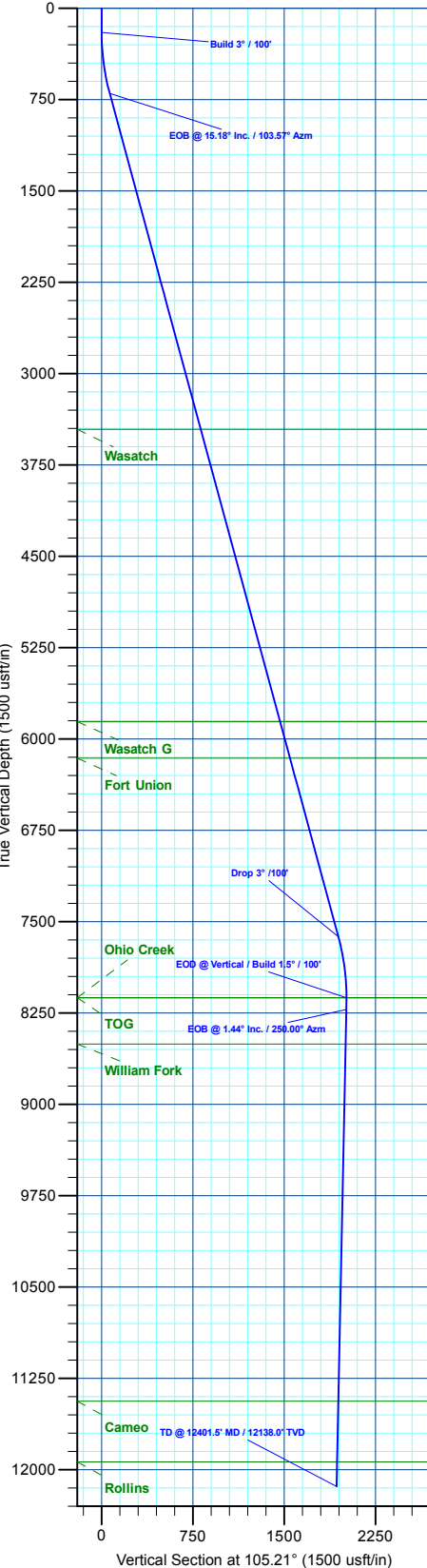
Name	TVD	+N/-S	+E/-W	Northing	Easting	Latitude	Longitude
OHCR - 25A-23	8126.0	-472.3	1956.5	14423540.88	2447061.73	39.683087	-108.133157
PBHL - 25A-23	12138.0	-506.5	1862.5	14423503.70	2446968.90	39.682993	-108.133491

WELL DETAILS: BJU M23A FED 25A-23 496

+N/-S	+E/-W	Ground Level : 8104.0	Northing	Easting	Latitude	Longitude
0.0	0.0		14423950.60	2445091.20	39.684384	-108.140106



T M
 Azimuths to True North
 Magnetic North: 9.43°
 Magnetic Field
 Strength: 51187.3nT
 Dip Angle: 65.82°
 Date: 6/3/2020
 Model: HDGM2020



Plan: Design #1 (BJU M23A FED 25A-23 496/Wellbore #1)

Created By: Will Jircik Date: 19:28, June 04 2020



Caerus Oil & Gas

Garfield County, CO

BJU M23A 496 Pad

BJU M23A FED 25A-23 496 - Slot BJU M23A FED 25A-23 496

Wellbore #1

Plan: Design #1

QES Well Planning Report

04 June, 2020



Database:	EDM 5000.1 Single User Db	Local Co-ordinate Reference:	Well BJU M23A FED 25A-23 496 - Slot BJU M23A FED 25A-23 496
Company:	Caerus Oil & Gas	TVD Reference:	RKB @ 8134.0usft (30')
Project:	Garfield County, CO	MD Reference:	RKB @ 8134.0usft (30')
Site:	BJU M23A 496 Pad	North Reference:	True
Well:	BJU M23A FED 25A-23 496	Survey Calculation Method:	Minimum Curvature
Wellbore:	Wellbore #1		
Design:	Design #1		

Project	Garfield County, CO		
Map System:	Universal Transverse Mercator (US Survey Fee	System Datum:	Mean Sea Level
Geo Datum:	NAD 1927 - Western US		
Map Zone:	Zone 12N (114 W to 108 W)		

Site	BJU M23A 496 Pad				
Site Position:	Northing:	14,424,028.50 usft	Latitude:	39.684596	
From:	Map	Easting:	2,445,109.60 usft	Longitude:	-108.140032
Position Uncertainty:	0.0 usft	Slot Radius:	13-3/16 "	Grid Convergence:	1.83 °

Well	BJU M23A FED 25A-23 496 - Slot BJU M23A FED 25A-23 496					
Well Position	+N/-S	-77.3 usft	Northing:	14,423,950.60 usft	Latitude:	39.684384
	+E/-W	-20.9 usft	Easting:	2,445,091.20 usft	Longitude:	-108.140106
Position Uncertainty		0.0 usft	Wellhead Elevation:		Ground Level:	8,104.0 usft

Wellbore	Wellbore #1				
Magnetics	Model Name	Sample Date	Declination (°)	Dip Angle (°)	Field Strength (nT)
	HDGM2020	6/3/2020	9.43	65.82	51,187.30000000

Design	Design #1			
Audit Notes:				
Version:	Phase:	PLAN	Tie On Depth:	0.0
Vertical Section:	Depth From (TVD) (usft)	+N/-S (usft)	+E/-W (usft)	Direction (°)
	0.0	0.0	0.0	105.21

Plan Sections											
Measured Depth (usft)	Inclination (°)	Azimuth (°)	Vertical Depth (usft)	+N/-S (usft)	+E/-W (usft)	Dogleg Rate (°/100usft)	Build Rate (°/100usft)	Turn Rate (°/100usft)	TFO (°)	Target	
0.0	0.00	0.00	0.0	0.0	0.0	0.00	0.00	0.00	0.00		
200.0	0.00	0.00	200.0	0.0	0.0	0.00	0.00	0.00	0.00		
706.1	15.18	103.57	700.2	-15.6	64.8	3.00	3.00	0.00	103.57		
7,882.2	15.18	103.57	7,625.8	-456.7	1,891.7	0.00	0.00	0.00	0.00		
8,388.3	0.00	0.00	8,126.0	-472.3	1,956.5	3.00	-3.00	0.00	180.00	OHCR - 25A-23	
8,484.6	1.45	250.00	8,222.3	-472.8	1,955.3	1.50	1.50	-114.18	250.00		
12,401.5	1.45	250.00	12,138.0	-506.5	1,862.5	0.00	0.00	0.00	0.00	PBHL - 25A-23	

Database:	EDM 5000.1 Single User Db	Local Co-ordinate Reference:	Well BJU M23A FED 25A-23 496 - Slot BJU M23A FED 25A-23 496
Company:	Caerus Oil & Gas	TVD Reference:	RKB @ 8134.0usft (30')
Project:	Garfield County, CO	MD Reference:	RKB @ 8134.0usft (30')
Site:	BJU M23A 496 Pad	North Reference:	True
Well:	BJU M23A FED 25A-23 496	Survey Calculation Method:	Minimum Curvature
Wellbore:	Wellbore #1		
Design:	Design #1		

Planned Survey

Measured Depth (usft)	Inclination (°)	Azimuth (°)	Vertical Depth (usft)	+N/-S (usft)	+E/-W (usft)	Vertical Section (usft)	Dogleg Rate (°/100usft)	Build Rate (°/100usft)	Turn Rate (°/100usft)
0.0	0.00	0.00	0.0	0.0	0.0	0.0	0.00	0.00	0.00
100.0	0.00	0.00	100.0	0.0	0.0	0.0	0.00	0.00	0.00
Build 3° / 100'									
200.0	0.00	0.00	200.0	0.0	0.0	0.0	0.00	0.00	0.00
300.0	3.00	103.57	300.0	-0.6	2.5	2.6	3.00	3.00	0.00
400.0	6.00	103.57	399.6	-2.5	10.2	10.5	3.00	3.00	0.00
500.0	9.00	103.57	498.8	-5.5	22.9	23.5	3.00	3.00	0.00
600.0	12.00	103.57	597.1	-9.8	40.6	41.7	3.00	3.00	0.00
EOB @ 15.18° Inc. / 103.57° Azm									
706.1	15.18	103.57	700.2	-15.6	64.8	66.6	3.00	3.00	0.00
800.0	15.18	103.57	790.8	-21.4	88.7	91.2	0.00	0.00	0.00
900.0	15.18	103.57	887.3	-27.6	114.2	117.4	0.00	0.00	0.00
1,000.0	15.18	103.57	983.8	-33.7	139.6	143.6	0.00	0.00	0.00
1,100.0	15.18	103.57	1,080.3	-39.9	165.1	169.8	0.00	0.00	0.00
1,200.0	15.18	103.57	1,176.9	-46.0	190.5	195.9	0.00	0.00	0.00
1,300.0	15.18	103.57	1,273.4	-52.1	216.0	222.1	0.00	0.00	0.00
1,400.0	15.18	103.57	1,369.9	-58.3	241.5	248.3	0.00	0.00	0.00
1,500.0	15.18	103.57	1,466.4	-64.4	266.9	274.5	0.00	0.00	0.00
1,600.0	15.18	103.57	1,562.9	-70.6	292.4	300.6	0.00	0.00	0.00
1,700.0	15.18	103.57	1,659.4	-76.7	317.8	326.8	0.00	0.00	0.00
1,800.0	15.18	103.57	1,755.9	-82.9	343.3	353.0	0.00	0.00	0.00
1,900.0	15.18	103.57	1,852.4	-89.0	368.7	379.2	0.00	0.00	0.00
2,000.0	15.18	103.57	1,948.9	-95.2	394.2	405.4	0.00	0.00	0.00
2,100.0	15.18	103.57	2,045.4	-101.3	419.7	431.5	0.00	0.00	0.00
2,200.0	15.18	103.57	2,142.0	-107.5	445.1	457.7	0.00	0.00	0.00
2,300.0	15.18	103.57	2,238.5	-113.6	470.6	483.9	0.00	0.00	0.00
2,400.0	15.18	103.57	2,335.0	-119.8	496.0	510.1	0.00	0.00	0.00
2,500.0	15.18	103.57	2,431.5	-125.9	521.5	536.3	0.00	0.00	0.00
2,600.0	15.18	103.57	2,528.0	-132.0	546.9	562.4	0.00	0.00	0.00
2,700.0	15.18	103.57	2,624.5	-138.2	572.4	588.6	0.00	0.00	0.00
2,800.0	15.18	103.57	2,721.0	-144.3	597.9	614.8	0.00	0.00	0.00
2,900.0	15.18	103.57	2,817.5	-150.5	623.3	641.0	0.00	0.00	0.00
3,000.0	15.18	103.57	2,914.0	-156.6	648.8	667.1	0.00	0.00	0.00
3,100.0	15.18	103.57	3,010.5	-162.8	674.2	693.3	0.00	0.00	0.00
3,200.0	15.18	103.57	3,107.1	-168.9	699.7	719.5	0.00	0.00	0.00
3,300.0	15.18	103.57	3,203.6	-175.1	725.1	745.7	0.00	0.00	0.00
3,400.0	15.18	103.57	3,300.1	-181.2	750.6	771.9	0.00	0.00	0.00
3,500.0	15.18	103.57	3,396.6	-187.4	776.1	798.0	0.00	0.00	0.00
Wasatch									
3,563.6	15.18	103.57	3,458.0	-191.3	792.3	814.7	0.00	0.00	0.00
3,600.0	15.18	103.57	3,493.1	-193.5	801.5	824.2	0.00	0.00	0.00
3,700.0	15.18	103.57	3,589.6	-199.7	827.0	850.4	0.00	0.00	0.00
3,800.0	15.18	103.57	3,686.1	-205.8	852.4	876.6	0.00	0.00	0.00
3,900.0	15.18	103.57	3,782.6	-211.9	877.9	902.7	0.00	0.00	0.00
4,000.0	15.18	103.57	3,879.1	-218.1	903.4	928.9	0.00	0.00	0.00
4,100.0	15.18	103.57	3,975.6	-224.2	928.8	955.1	0.00	0.00	0.00
4,200.0	15.18	103.57	4,072.2	-230.4	954.3	981.3	0.00	0.00	0.00
4,300.0	15.18	103.57	4,168.7	-236.5	979.7	1,007.5	0.00	0.00	0.00
4,400.0	15.18	103.57	4,265.2	-242.7	1,005.2	1,033.6	0.00	0.00	0.00
4,500.0	15.18	103.57	4,361.7	-248.8	1,030.6	1,059.8	0.00	0.00	0.00
4,600.0	15.18	103.57	4,458.2	-255.0	1,056.1	1,086.0	0.00	0.00	0.00
4,700.0	15.18	103.57	4,554.7	-261.1	1,081.6	1,112.2	0.00	0.00	0.00
4,800.0	15.18	103.57	4,651.2	-267.3	1,107.0	1,138.4	0.00	0.00	0.00

Database:	EDM 5000.1 Single User Db	Local Co-ordinate Reference:	Well BJU M23A FED 25A-23 496 - Slot BJU M23A FED 25A-23 496
Company:	Caerus Oil & Gas	TVD Reference:	RKB @ 8134.0usft (30')
Project:	Garfield County, CO	MD Reference:	RKB @ 8134.0usft (30')
Site:	BJU M23A 496 Pad	North Reference:	True
Well:	BJU M23A FED 25A-23 496	Survey Calculation Method:	Minimum Curvature
Wellbore:	Wellbore #1		
Design:	Design #1		

Planned Survey

Measured Depth (usft)	Inclination (°)	Azimuth (°)	Vertical Depth (usft)	+N/-S (usft)	+E/-W (usft)	Vertical Section (usft)	Dogleg Rate (°/100usft)	Build Rate (°/100usft)	Turn Rate (°/100usft)
4,900.0	15.18	103.57	4,747.7	-273.4	1,132.5	1,164.5	0.00	0.00	0.00
5,000.0	15.18	103.57	4,844.2	-279.6	1,157.9	1,190.7	0.00	0.00	0.00
5,100.0	15.18	103.57	4,940.7	-285.7	1,183.4	1,216.9	0.00	0.00	0.00
5,200.0	15.18	103.57	5,037.2	-291.8	1,208.8	1,243.1	0.00	0.00	0.00
5,300.0	15.18	103.57	5,133.8	-298.0	1,234.3	1,269.2	0.00	0.00	0.00
5,400.0	15.18	103.57	5,230.3	-304.1	1,259.8	1,295.4	0.00	0.00	0.00
5,500.0	15.18	103.57	5,326.8	-310.3	1,285.2	1,321.6	0.00	0.00	0.00
5,600.0	15.18	103.57	5,423.3	-316.4	1,310.7	1,347.8	0.00	0.00	0.00
5,700.0	15.18	103.57	5,519.8	-322.6	1,336.1	1,374.0	0.00	0.00	0.00
5,800.0	15.18	103.57	5,616.3	-328.7	1,361.6	1,400.1	0.00	0.00	0.00
5,900.0	15.18	103.57	5,712.8	-334.9	1,387.0	1,426.3	0.00	0.00	0.00
6,000.0	15.18	103.57	5,809.3	-341.0	1,412.5	1,452.5	0.00	0.00	0.00
Wasatch G									
6,050.4	15.18	103.57	5,858.0	-344.1	1,425.3	1,465.7	0.00	0.00	0.00
6,100.0	15.18	103.57	5,905.8	-347.2	1,438.0	1,478.7	0.00	0.00	0.00
6,200.0	15.18	103.57	6,002.3	-353.3	1,463.4	1,504.8	0.00	0.00	0.00
6,300.0	15.18	103.57	6,098.9	-359.5	1,488.9	1,531.0	0.00	0.00	0.00
Fort Union									
6,361.3	15.18	103.57	6,158.0	-363.2	1,504.5	1,547.1	0.00	0.00	0.00
6,400.0	15.18	103.57	6,195.4	-365.6	1,514.3	1,557.2	0.00	0.00	0.00
6,500.0	15.18	103.57	6,291.9	-371.7	1,539.8	1,583.4	0.00	0.00	0.00
6,600.0	15.18	103.57	6,388.4	-377.9	1,565.3	1,609.6	0.00	0.00	0.00
6,700.0	15.18	103.57	6,484.9	-384.0	1,590.7	1,635.7	0.00	0.00	0.00
6,800.0	15.18	103.57	6,581.4	-390.2	1,616.2	1,661.9	0.00	0.00	0.00
6,900.0	15.18	103.57	6,677.9	-396.3	1,641.6	1,688.1	0.00	0.00	0.00
7,000.0	15.18	103.57	6,774.4	-402.5	1,667.1	1,714.3	0.00	0.00	0.00
7,100.0	15.18	103.57	6,870.9	-408.6	1,692.5	1,740.5	0.00	0.00	0.00
7,200.0	15.18	103.57	6,967.4	-414.8	1,718.0	1,766.6	0.00	0.00	0.00
7,300.0	15.18	103.57	7,064.0	-420.9	1,743.5	1,792.8	0.00	0.00	0.00
7,400.0	15.18	103.57	7,160.5	-427.1	1,768.9	1,819.0	0.00	0.00	0.00
7,500.0	15.18	103.57	7,257.0	-433.2	1,794.4	1,845.2	0.00	0.00	0.00
7,600.0	15.18	103.57	7,353.5	-439.4	1,819.8	1,871.3	0.00	0.00	0.00
7,700.0	15.18	103.57	7,450.0	-445.5	1,845.3	1,897.5	0.00	0.00	0.00
7,800.0	15.18	103.57	7,546.5	-451.6	1,870.7	1,923.7	0.00	0.00	0.00
Drop 3° /100'									
7,882.2	15.18	103.57	7,625.8	-456.7	1,891.7	1,945.2	0.00	0.00	0.00
7,900.0	14.65	103.57	7,643.0	-457.8	1,896.1	1,949.8	3.00	-3.00	0.00
8,000.0	11.65	103.57	7,740.4	-463.1	1,918.2	1,972.5	3.00	-3.00	0.00
8,100.0	8.65	103.57	7,838.8	-467.2	1,935.4	1,990.1	3.00	-3.00	0.00
8,200.0	5.65	103.57	7,938.0	-470.2	1,947.5	2,002.6	3.00	-3.00	0.00
8,300.0	2.65	103.57	8,037.8	-471.9	1,954.5	2,009.8	3.00	-3.00	0.00
EOD @ Vertical / Build 1.5° / 100' - Ohio Creek - TOG									
8,388.3	0.00	0.00	8,126.0	-472.3	1,956.5	2,011.8	3.00	-3.00	0.00
8,400.0	0.18	250.00	8,137.7	-472.3	1,956.4	2,011.8	1.50	1.50	0.00
EOB @ 1.44° Inc. / 250.00° Azm									
8,484.6	1.45	250.00	8,222.3	-472.8	1,955.3	2,010.9	1.50	1.50	0.00
8,500.0	1.45	250.00	8,237.7	-472.9	1,955.0	2,010.5	0.00	0.00	0.00
8,600.0	1.45	250.00	8,337.7	-473.8	1,952.6	2,008.5	0.00	0.00	0.00
8,700.0	1.45	250.00	8,437.7	-474.6	1,950.2	2,006.4	0.00	0.00	0.00
William Fork									
8,767.4	1.45	250.00	8,505.0	-475.2	1,948.6	2,005.0	0.00	0.00	0.00
8,800.0	1.45	250.00	8,537.6	-475.5	1,947.8	2,004.4	0.00	0.00	0.00

Database:	EDM 5000.1 Single User Db	Local Co-ordinate Reference:	Well BJU M23A FED 25A-23 496 - Slot BJU M23A FED 25A-23 496
Company:	Caerus Oil & Gas	TVD Reference:	RKB @ 8134.0usft (30')
Project:	Garfield County, CO	MD Reference:	RKB @ 8134.0usft (30')
Site:	BJU M23A 496 Pad	North Reference:	True
Well:	BJU M23A FED 25A-23 496	Survey Calculation Method:	Minimum Curvature
Wellbore:	Wellbore #1		
Design:	Design #1		

Planned Survey										
Measured Depth (usft)	Inclination (°)	Azimuth (°)	Vertical Depth (usft)	+N/-S (usft)	+E/-W (usft)	Vertical Section (usft)	Dogleg Rate (°/100usft)	Build Rate (°/100usft)	Turn Rate (°/100usft)	
8,900.0	1.45	250.00	8,637.6	-476.3	1,945.5	2,002.3	0.00	0.00	0.00	
9,000.0	1.45	250.00	8,737.6	-477.2	1,943.1	2,000.2	0.00	0.00	0.00	
9,100.0	1.45	250.00	8,837.5	-478.1	1,940.7	1,998.2	0.00	0.00	0.00	
9,200.0	1.45	250.00	8,937.5	-478.9	1,938.4	1,996.1	0.00	0.00	0.00	
9,300.0	1.45	250.00	9,037.5	-479.8	1,936.0	1,994.1	0.00	0.00	0.00	
9,400.0	1.45	250.00	9,137.4	-480.7	1,933.6	1,992.0	0.00	0.00	0.00	
9,500.0	1.45	250.00	9,237.4	-481.5	1,931.3	1,989.9	0.00	0.00	0.00	
9,600.0	1.45	250.00	9,337.4	-482.4	1,928.9	1,987.9	0.00	0.00	0.00	
9,700.0	1.45	250.00	9,437.3	-483.2	1,926.5	1,985.8	0.00	0.00	0.00	
9,800.0	1.45	250.00	9,537.3	-484.1	1,924.1	1,983.8	0.00	0.00	0.00	
9,900.0	1.45	250.00	9,637.3	-485.0	1,921.8	1,981.7	0.00	0.00	0.00	
10,000.0	1.45	250.00	9,737.2	-485.8	1,919.4	1,979.6	0.00	0.00	0.00	
10,100.0	1.45	250.00	9,837.2	-486.7	1,917.0	1,977.6	0.00	0.00	0.00	
10,200.0	1.45	250.00	9,937.2	-487.6	1,914.7	1,975.5	0.00	0.00	0.00	
10,300.0	1.45	250.00	10,037.1	-488.4	1,912.3	1,973.5	0.00	0.00	0.00	
10,400.0	1.45	250.00	10,137.1	-489.3	1,909.9	1,971.4	0.00	0.00	0.00	
10,500.0	1.45	250.00	10,237.1	-490.1	1,907.6	1,969.3	0.00	0.00	0.00	
10,600.0	1.45	250.00	10,337.0	-491.0	1,905.2	1,967.3	0.00	0.00	0.00	
10,700.0	1.45	250.00	10,437.0	-491.9	1,902.8	1,965.2	0.00	0.00	0.00	
10,800.0	1.45	250.00	10,537.0	-492.7	1,900.4	1,963.1	0.00	0.00	0.00	
10,900.0	1.45	250.00	10,637.0	-493.6	1,898.1	1,961.1	0.00	0.00	0.00	
11,000.0	1.45	250.00	10,736.9	-494.5	1,895.7	1,959.0	0.00	0.00	0.00	
11,100.0	1.45	250.00	10,836.9	-495.3	1,893.3	1,957.0	0.00	0.00	0.00	
11,200.0	1.45	250.00	10,936.9	-496.2	1,891.0	1,954.9	0.00	0.00	0.00	
11,300.0	1.45	250.00	11,036.8	-497.0	1,888.6	1,952.8	0.00	0.00	0.00	
11,400.0	1.45	250.00	11,136.8	-497.9	1,886.2	1,950.8	0.00	0.00	0.00	
11,500.0	1.45	250.00	11,236.8	-498.8	1,883.9	1,948.7	0.00	0.00	0.00	
11,600.0	1.45	250.00	11,336.7	-499.6	1,881.5	1,946.7	0.00	0.00	0.00	
11,700.0	1.45	250.00	11,436.7	-500.5	1,879.1	1,944.6	0.00	0.00	0.00	
Cameo										
11,701.3	1.45	250.00	11,438.0	-500.5	1,879.1	1,944.6	0.00	0.00	0.00	
11,800.0	1.45	250.00	11,536.7	-501.4	1,876.8	1,942.5	0.00	0.00	0.00	
11,900.0	1.45	250.00	11,636.6	-502.2	1,874.4	1,940.5	0.00	0.00	0.00	
12,000.0	1.45	250.00	11,736.6	-503.1	1,872.0	1,938.4	0.00	0.00	0.00	
12,100.0	1.45	250.00	11,836.6	-503.9	1,869.6	1,936.4	0.00	0.00	0.00	
12,200.0	1.45	250.00	11,936.5	-504.8	1,867.3	1,934.3	0.00	0.00	0.00	
Rollins										
12,201.5	1.45	250.00	11,938.0	-504.8	1,867.2	1,934.3	0.00	0.00	0.00	
12,300.0	1.45	250.00	12,036.5	-505.7	1,864.9	1,932.2	0.00	0.00	0.00	
TD @ 12401.5' MD / 12138.0' TVD										
12,401.5	1.45	250.00	12,138.0	-506.5	1,862.5	1,930.1	0.00	0.00	0.00	

Database:	EDM 5000.1 Single User Db	Local Co-ordinate Reference:	Well BJU M23A FED 25A-23 496 - Slot BJU M23A FED 25A-23 496
Company:	Caerus Oil & Gas	TVD Reference:	RKB @ 8134.0usft (30')
Project:	Garfield County, CO	MD Reference:	RKB @ 8134.0usft (30')
Site:	BJU M23A 496 Pad	North Reference:	True
Well:	BJU M23A FED 25A-23 496	Survey Calculation Method:	Minimum Curvature
Wellbore:	Wellbore #1		
Design:	Design #1		

Design Targets

Target Name - hit/miss target - Shape	Dip Angle (°)	Dip Dir. (°)	TVD (usft)	+N/-S (usft)	+E/-W (usft)	Northing (usft)	Easting (usft)	Latitude	Longitude
OHCR - 25A-23 - plan hits target center - Point	0.00	0.00	8,126.0	-472.3	1,956.5	14,423,540.88	2,447,061.73	39.683087	-108.133158
PBHL - 25A-23 - plan hits target center - Ellipse (radii L100.0 W50.0 on 250.00 azi)	0.00	0.00	12,138.0	-506.5	1,862.5	14,423,503.70	2,446,968.90	39.682993	-108.133491

Formations

Measured Depth (usft)	Vertical Depth (usft)	Name	Lithology	Dip (°)	Dip Direction (°)
3,563.6	3,458.0	Wasatch			
6,050.4	5,858.0	Wasatch G			
6,361.3	6,158.0	Fort Union			
8,388.3	8,126.0	Ohio Creek			
8,388.3	8,126.0	TOG			
8,767.4	8,505.0	William Fork			
11,701.3	11,438.0	Cameo			
12,201.5	11,938.0	Rollins			

Plan Annotations

Measured Depth (usft)	Vertical Depth (usft)	Local Coordinates		Comment
		+N/-S (usft)	+E/-W (usft)	
200.0	200.0	0.0	0.0	Build 3° / 100'
706.1	700.2	-15.6	64.8	EOB @ 15.18° Inc. / 103.57° Azm
7,882.2	7,625.8	-456.7	1,891.7	Drop 3° / 100'
8,388.3	8,126.0	-472.3	1,956.5	EOD @ Vertical / Build 1.5° / 100'
8,484.6	8,222.3	-472.8	1,955.3	EOB @ 1.44° Inc. / 250.00° Azm
12,401.5	12,138.0	-506.5	1,862.5	TD @ 12401.5' MD / 12138.0' TVD