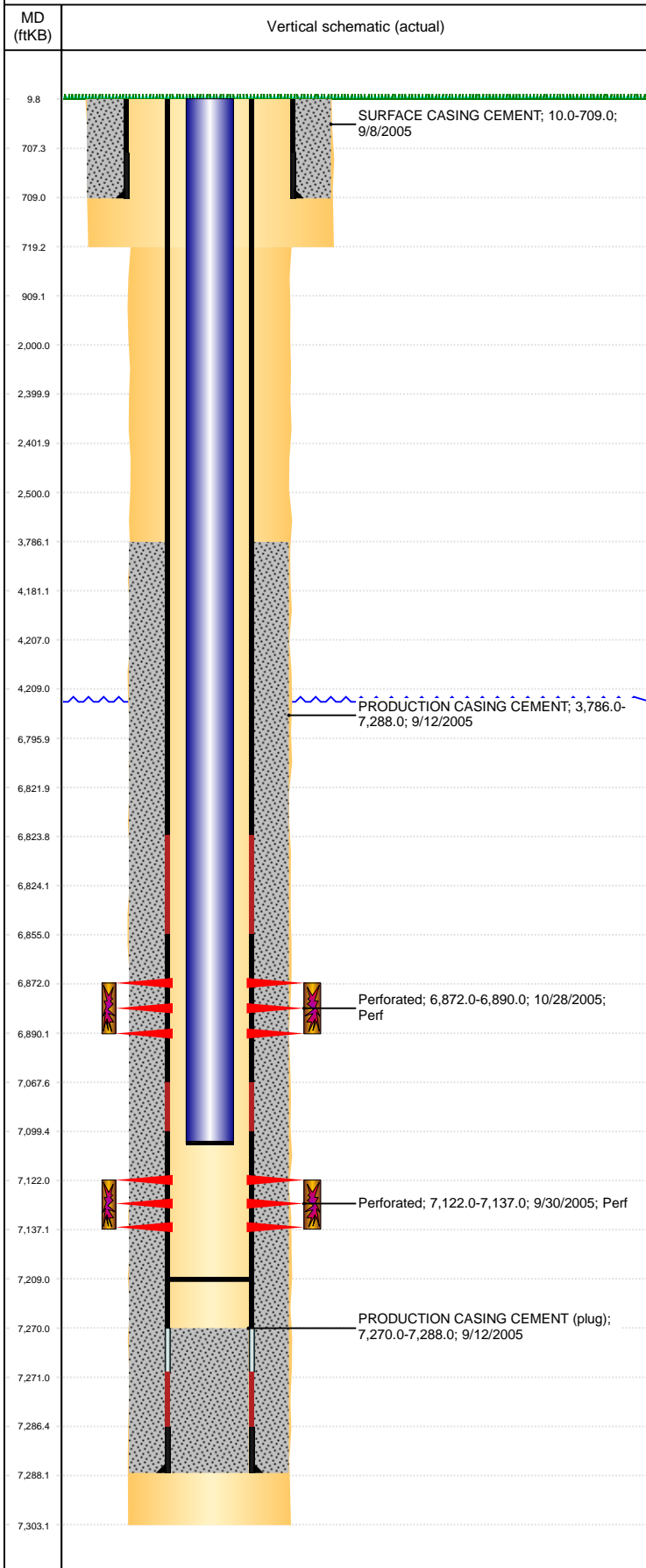


Well Name: MOSER H34-15

VERTICAL, ORIGINAL HOLE, 6/25/2020 10:48:38 AM



Well Header									
API 05-123-23196			Business Unit DJ BASIN			District 15		Well Config VERTICAL	
KB - GL / MSL (ft... 10.00		Spud Date 9/8/2005		P & A Date		Well Production Status PR			SoRT No
Comment									
Surface Location (Congressional)									
Qtr 3 SW	Qtr 4 SE	Section 34	Twonshp 3	Twonsh... N	Range 65	Rng E/... W	Actual Latitude (°) 40.17660698	Actual Longitude (°) -104.64697888	
Wellbore Sections									
Section Des			Size (in)			Act Top, MD (ftKB)		Act Btm, MD (ftKB)	
SURFACE			12 1/4			10		719	
PRODUCTION			7 7/8			719		7,303	
Casing Strings									
Csg Des			Run Date		OD (in)	Wt/Len (lb/ft)	Grade	Top, MD (ftKB)	MD (ftKB)
Surface			9/8/2005		8 5/8	24.00	J-55	10.0	709.0
Production			9/12/2005		4 1/2	11.60	M-80	10.0	7,288.0
Cement									
Des					Start Date		Top (ftKB)		Btm (ftKB)
SURFACE CASING CEMENT					9/8/2005		10.0		709.0
PRODUCTION CASING CEMENT					9/12/2005		3,786.0		7,288.0
Zone Statuses									
Zone Name	Status Date	Status	Fluid Type	Job				Prod Method	
CODELL	10/29/2005	PR		DRILLING/COMPLETION - ORIGINAL, 9/8/2005...				Flowing	
CODELL	11/28/2006	PR		DRILLING/COMPLETION - ORIGINAL, 9/8/2005...					
NIOBRARA	10/29/2005	PR		DRILLING/COMPLETION - ORIGINAL, 9/8/2005...					
Perforation Data									
Linked Zone			Bnch/Stg	Entered Shot Total	Top (ftKB)		Btm (ftKB)		Date
NIOBRARA, ORIGINAL HOLE				108	6,872.00		6,890.00		10/28/2005
CODELL, ORIGINAL HOLE				60	7,122.00		7,137.00		9/30/2005
Stimulation Intervals									
Zone				Start Date		Top (ftKB)		Btm (ftKB)	
NIOBRARA, ORIGINAL HOLE				10/28/2005		6,872.0		6,890.0	
CODELL, ORIGINAL HOLE				10/28/2005		7,122.0		7,137.0	
Other In Hole									
Run Date		Des			Make		OD (in)	Top (ftKB)	Btm (ftKB)
Logs									
Date		Type				Top, MD (ftKB)		Btm, MD (ftKB)	
9/11/2005		COMPENSATED DENSITY				4,100.0		7,283.0	
9/11/2005		INDUCTION				709.0		7,303.0	
9/26/2005		CEMENT BOND				3,650.0		7,225.0	
1/1/2014		GYRO				0.0		7,000.0	
Plug Back Total Depths									
Date		Type			Com				Depth (ftKB)
11/28/2006		PLUG REMNANTS			CLEAN OUT CFTP				7,209.0
12/17/2014		FILL			17' IN ON 4TH JT				7,209.0