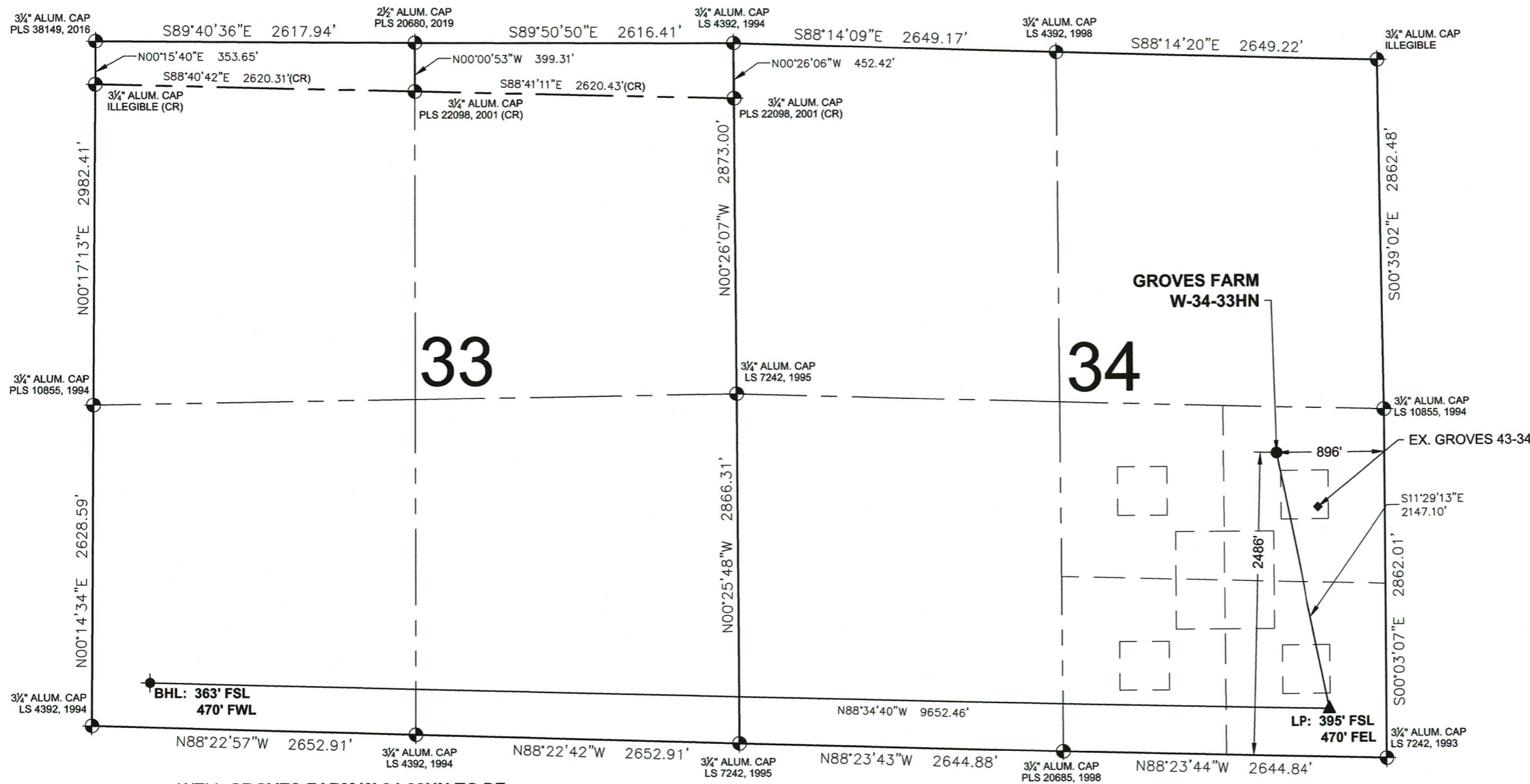


GROVES FARM W-34-33HN  
WELL LOCATION EXHIBIT



WELL GROVES FARM W-34-33HN TO BE  
LOCATED 2486' FSL & 896' FEL

WELL BORE COORDINATES  
(NAD83)

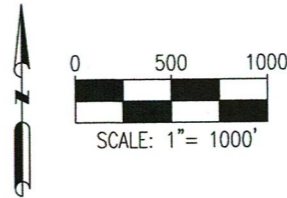
**SURFACE LOCATION:**  
GROUND ELEVATION=4844'  
LATITUDE:40.529903°N  
LONGITUDE:104.642939°W

**LANDING POINT:**  
LATITUDE:40.524127°N  
LONGITUDE:104.641412°W

**BOTTOM HOLE:**  
LATITUDE:40.524819°N  
LONGITUDE:104.676113°W

**WELL NOTES:**  
BH LOCATION PROVIDED BY CLIENT.  
LAND SURFACE USE - DRY LAND CROP  
EX. GROVES 43-34 IS 567' SE AT 2048' FSL & 548' FEL.  
SEE LOCATION DRAWING FOR ADDITIONAL IMPROVEMENTS  
WITHIN 500'

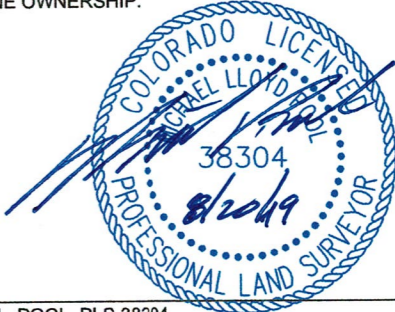
PDOP=1.1  
GPS OPERATOR: JARED GILL



- NOTES:**
1. THIS FIELD SURVEY CONFORMS TO THE MINIMUM STANDARDS SET BY THE COGCC, RULE NO. 215
  2. ALL DISTANCES AND BEARINGS SHOWN HEREON ARE GROUND VALUES AS GPS MEASURED IN THE FIELD, WITH TIES TO WELLS MEASURED PERPENDICULAR TO LINES SHOWN HEREON. THIS LOW DISTORTION PROJECTION (LDP) IS BASED ON THE NORTH AMERICAN DATUM OF 1983, U.S. SURVEY FOOT WITH A LATITUDE ORIGIN OF 40.481168°N, A CENTRAL MERIDIAN LONGITUDE OF 104.773359°W, AND A SCALE FACTOR ON THE CENTRAL MERIDIAN OF 1.000221 (EXACT). THE LDP BASIS OF BEARINGS IS GEODETIC NORTH.
  3. FIELD VERIFICATION OF MONUMENTS COMPLETED WITHIN 1 YEAR OF SIGNATURE DATE, UNLESS OTHERWISE NOTED.

LEGEND	
	= EXISTING MONUMENT
	= CALCULATED POSITION
	= PROPOSED WELL
	= BOTTOM HOLE
	= LANDING POINT
	= EXISTING WELL
	LP = LANDING POINT
	BHL = BOTTOM HOLE
	CR = COMMON REPORT

I, MICHAEL L. POOL, A LICENSED PROFESSIONAL LAND SURVEYOR IN THE STATE OF COLORADO, DO HEREBY STATE TO **BAYSWATER EXPLORATION & PRODUCTION, LLC** THAT THE WELL LOCATION EXHIBIT SHOWN HEREON WAS PREPARED BY ME OR UNDER MY DIRECT SUPERVISION AND THE DRAWING SHOWN HEREON ACCURATELY DEPICTS THE PROPOSED LOCATION OF THE WELL. THIS EXHIBIT MEETS THE REQUIREMENTS OF A GIS LAND POSITION AS DEFINED BY SECTION 38-51-102 (7.5) C.R.S. AND AS SUCH PER SECTION 38-51-109.3 C.R.S. CANNOT BE RELIED UPON TO DETERMINE OWNERSHIP.



MICHAEL L. POOL, PLS 38304  
COLORADO LICENSED PROFESSIONAL LAND SURVEYOR  
FOR AND ON BEHALF OF P.F.S., LLC  
d.b.a. ASCENT GEOMATICS SOLUTIONS

NOTICE: ACCORDING TO COLORADO LAW YOU MUST COMMENCE ANY LEGAL ACTION BASED UPON ANY DEFECT IN THIS SURVEY WITHIN THREE YEARS AFTER YOU FIRST DISCOVER SUCH DEFECT. IN NO EVENT MAY ANY ACTION BASED UPON ANY DEFECT IN THIS SURVEY BE COMMENCED MORE THAN TEN YEARS FROM THIS SAID DATE OF THIS CERTIFICATION SHOWN HEREON.

SHEET 1 OF 1



8629 Wolff Court  
Westminster, CO 80031  
(303) 928-7128  
www.ascentgeomatics.com

FIELD DATE:  
04-25-19  
DRAWING DATE:  
08-15-19

BY:  
JW

CHECKED:  
JAG

WELL NAME:  
GROVES FARM W-34-33HN  
SURFACE LOCATION:  
NE 1/4 SE 1/4 SEC. 34, T7N, R65W, 6TH P.M.  
WELD COUNTY, COLORADO

PREPARED FOR:

