



BAYSWATER

Bayswater Exploration & Production, LLC

DJ Basin

Groves Farm 34-L Pad

GROVES FARM T-34-33HN

Wellbore #1

Plan: Design #1

Standard Planning Report

20 April, 2020



Pad Name: Groves Farm 34-L Pad
Well Name: GROVES FARM T-34-33HN
Ground Level: 4844.0
SHL Latitude: 40° 31' 48.097 N
SHL Longitude: 104° 38' 34.562 W

SECTION DETAILS

Sec	MD	Inc	Azi	TVD	+N/-S	+E/-W	Dleg	TFace	VSect	Target
1	0.0	0.00	0.00	0.0	0.0	0.0	0.00	0.00	0.0	
2	1500.0	0.00	0.00	1500.0	0.0	0.0	0.00	0.00	0.0	
3	3085.3	31.71	138.60	3005.7	-320.7	282.7	2.00	138.60	-238.5	
4	5212.6	31.71	138.60	4815.4	-1159.4	1022.0	0.00	0.00	-862.3	
5	6797.9	0.00	271.21	6321.0	-1480.2	1304.8	2.00	180.00	-1100.8	
6	6997.9	0.00	271.21	6521.0	-1480.2	1304.8	0.00	0.00	-1100.8	
7	7896.5	89.86	271.21	7094.0	-1468.1	733.3	10.00	0.00	-535.8	GF T-34-33HN LP
8	18161.9	89.86	271.21	7119.0	-1252.1	-9529.8	0.00	0.00	9611.7	GF T-34-33HN PBHL

DESIGN TARGET DETAILS

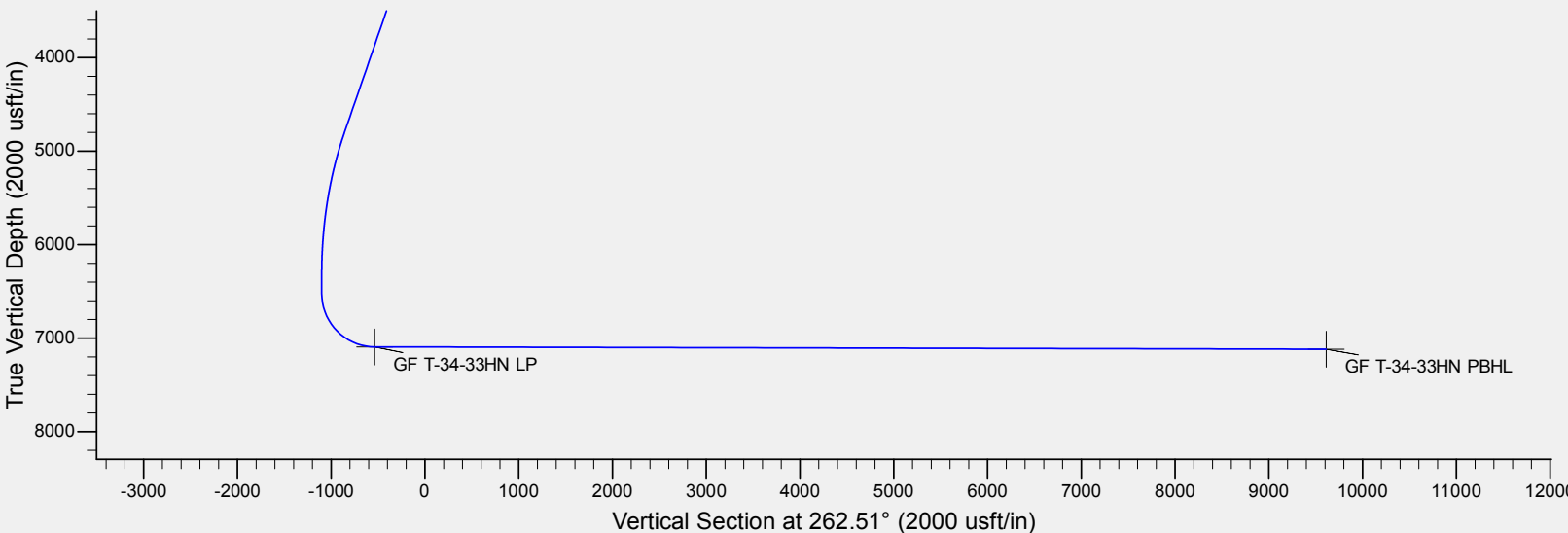
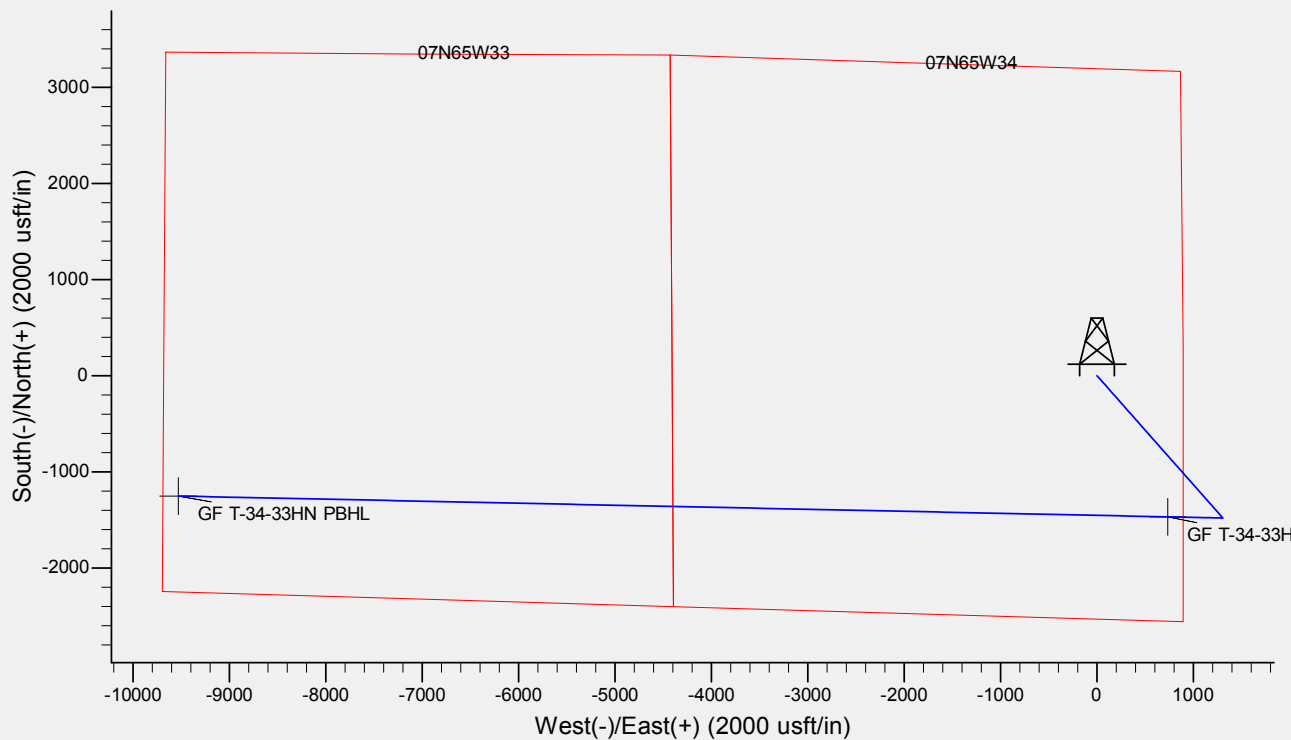
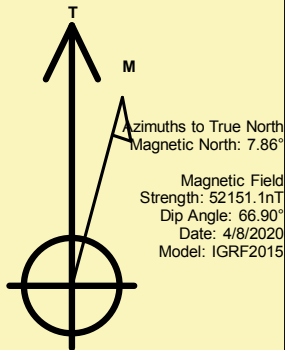
Name	TVD	+N/-S	+E/-W	Northing	Easting	Latitude	Longitude	Shape
GF T-34-33HN LP	7094.0	-1468.1	733.3	1435619.88	3238987.71	40° 31' 33.589 N	104° 38' 25.066 W	Point
GF T-34-33HN PBHL	- plan hits target center 7119.0	-1252.1	-9529.8	1435736.72	3228722.97	40° 31' 35.706 N	104° 40' 37.974 W	Point

REFERENCE INFORMATION

Co-ordinate (N/E) Reference: Well GROVES FARM T-34-33HN, True North
Vertical (TVD) Reference: KB @ 4869.0usft (Original Well Elev)
Section (VS) Reference: Slot - (0.0N, 0.0E)
Measured Depth Reference: KB @ 4869.0usft (Original Well Elev)
Calculation Method: Minimum Curvature

CASING DETAILS

No casing data is available





Database:	EDM	Local Co-ordinate Reference:	Well GROVES FARM T-34-33HN
Company:	Bayswater Exploration & Production, LLC	TVD Reference:	KB @ 4869.0usft (Original Well Elev)
Project:	DJ Basin	MD Reference:	KB @ 4869.0usft (Original Well Elev)
Site:	Groves Farm 34-L Pad	North Reference:	True
Well:	GROVES FARM T-34-33HN	Survey Calculation Method:	Minimum Curvature
Wellbore:	Wellbore #1		
Design:	Design #1		

Project	DJ Basin, DJ Basin		
Map System:	US State Plane 1983	System Datum:	Mean Sea Level
Geo Datum:	North American Datum 1983		
Map Zone:	Colorado Northern Zone		

Site	Groves Farm 34-L Pad				
Site Position:		Northing:	1,437,185.82 usft	Latitude:	40° 31' 49.134 N
From:	Lat/Long	Easting:	3,238,241.98 usft	Longitude:	104° 38' 34.526 W
Position Uncertainty:	0.0 usft	Slot Radius:	13-3/16 "	Grid Convergence:	0.55 °

Well	GROVES FARM T-34-33HN					
Well Position	+N/-S	-104.9 usft	Northing:	1,437,080.87 usft	Latitude:	40° 31' 48.097 N
	+E/-W	-2.8 usft	Easting:	3,238,240.21 usft	Longitude:	104° 38' 34.562 W
Position Uncertainty		0.0 usft	Wellhead Elevation:		Ground Level:	4,844.0 usft

Wellbore	Wellbore #1				
Magnetics	Model Name	Sample Date	Declination (°)	Dip Angle (°)	Field Strength (nT)
	IGRF2015	4/8/2020	7.86	66.90	52,151.06801991

Design	Design #1			
Audit Notes:				
Version:	Phase:	PLAN	Tie On Depth:	0.0
Vertical Section:	Depth From (TVD) (usft)	+N/-S (usft)	+E/-W (usft)	Direction (°)
	0.0	0.0	0.0	262.51

Plan Survey Tool Program	Date	4/20/2020		
Depth From (usft)	Depth To (usft)	Survey (Wellbore)	Tool Name	Remarks
1	0.0	18,161.9	Design #1 (Wellbore #1)	MWD
				OWSG MWD - Standard

Plan Sections										
Measured Depth (usft)	Inclination (°)	Azimuth (°)	Vertical Depth (usft)	+N/-S (usft)	+E/-W (usft)	Dogleg Rate (°/100usft)	Build Rate (°/100usft)	Turn Rate (°/100usft)	TFO (°)	Target
0.0	0.00	0.00	0.0	0.0	0.0	0.00	0.00	0.00	0.00	
1,500.0	0.00	0.00	1,500.0	0.0	0.0	0.00	0.00	0.00	0.00	
3,085.3	31.71	138.60	3,005.7	-320.7	282.7	2.00	2.00	0.00	138.60	
5,212.6	31.71	138.60	4,815.4	-1,159.4	1,022.0	0.00	0.00	0.00	0.00	
6,797.9	0.00	271.21	6,321.0	-1,480.2	1,304.8	2.00	-2.00	0.00	180.00	
6,997.9	0.00	271.21	6,521.0	-1,480.2	1,304.8	0.00	0.00	0.00	0.00	
7,896.5	89.86	271.21	7,094.0	-1,468.1	733.3	10.00	10.00	0.00	0.00	GF T-34-33HN LP
18,161.9	89.86	271.21	7,119.0	-1,252.1	-9,529.8	0.00	0.00	0.00	0.00	GF T-34-33HN PBHL



Database:	EDM	Local Co-ordinate Reference:	Well GROVES FARM T-34-33HN
Company:	Bayswater Exploration & Production, LLC	TVD Reference:	KB @ 4869.0usft (Original Well Elev)
Project:	DJ Basin	MD Reference:	KB @ 4869.0usft (Original Well Elev)
Site:	Groves Farm 34-L Pad	North Reference:	True
Well:	GROVES FARM T-34-33HN	Survey Calculation Method:	Minimum Curvature
Wellbore:	Wellbore #1		
Design:	Design #1		

Planned Survey									
Measured Depth (usft)	Inclination (°)	Azimuth (°)	Vertical Depth (usft)	+N/-S (usft)	+E/-W (usft)	Vertical Section (usft)	Dogleg Rate (°/100usft)	Build Rate (°/100usft)	Turn Rate (°/100usft)
0.0	0.00	0.00	0.0	0.0	0.0	0.0	0.00	0.00	0.00
100.0	0.00	0.00	100.0	0.0	0.0	0.0	0.00	0.00	0.00
200.0	0.00	0.00	200.0	0.0	0.0	0.0	0.00	0.00	0.00
300.0	0.00	0.00	300.0	0.0	0.0	0.0	0.00	0.00	0.00
400.0	0.00	0.00	400.0	0.0	0.0	0.0	0.00	0.00	0.00
500.0	0.00	0.00	500.0	0.0	0.0	0.0	0.00	0.00	0.00
600.0	0.00	0.00	600.0	0.0	0.0	0.0	0.00	0.00	0.00
700.0	0.00	0.00	700.0	0.0	0.0	0.0	0.00	0.00	0.00
800.0	0.00	0.00	800.0	0.0	0.0	0.0	0.00	0.00	0.00
900.0	0.00	0.00	900.0	0.0	0.0	0.0	0.00	0.00	0.00
1,000.0	0.00	0.00	1,000.0	0.0	0.0	0.0	0.00	0.00	0.00
1,100.0	0.00	0.00	1,100.0	0.0	0.0	0.0	0.00	0.00	0.00
1,200.0	0.00	0.00	1,200.0	0.0	0.0	0.0	0.00	0.00	0.00
1,300.0	0.00	0.00	1,300.0	0.0	0.0	0.0	0.00	0.00	0.00
1,400.0	0.00	0.00	1,400.0	0.0	0.0	0.0	0.00	0.00	0.00
1,500.0	0.00	0.00	1,500.0	0.0	0.0	0.0	0.00	0.00	0.00
1,600.0	2.00	138.60	1,600.0	-1.3	1.2	-1.0	2.00	2.00	0.00
1,700.0	4.00	138.60	1,699.8	-5.2	4.6	-3.9	2.00	2.00	0.00
1,800.0	6.00	138.60	1,799.5	-11.8	10.4	-8.8	2.00	2.00	0.00
1,900.0	8.00	138.60	1,898.7	-20.9	18.4	-15.6	2.00	2.00	0.00
2,000.0	10.00	138.60	1,997.5	-32.6	28.8	-24.3	2.00	2.00	0.00
2,100.0	12.00	138.60	2,095.6	-47.0	41.4	-34.9	2.00	2.00	0.00
2,200.0	14.00	138.60	2,193.1	-63.8	56.3	-47.5	2.00	2.00	0.00
2,300.0	16.00	138.60	2,289.6	-83.2	73.4	-61.9	2.00	2.00	0.00
2,400.0	18.00	138.60	2,385.3	-105.2	92.7	-78.2	2.00	2.00	0.00
2,500.0	20.00	138.60	2,479.8	-129.6	114.2	-96.4	2.00	2.00	0.00
2,600.0	22.00	138.60	2,573.2	-156.5	137.9	-116.4	2.00	2.00	0.00
2,700.0	24.00	138.60	2,665.2	-185.8	163.8	-138.2	2.00	2.00	0.00
2,800.0	26.00	138.60	2,755.8	-217.5	191.7	-161.8	2.00	2.00	0.00
2,900.0	28.00	138.60	2,844.9	-251.5	221.7	-187.1	2.00	2.00	0.00
3,000.0	30.00	138.60	2,932.4	-287.9	253.8	-214.1	2.00	2.00	0.00
3,085.3	31.71	138.60	3,005.7	-320.7	282.7	-238.5	2.00	2.00	0.00
3,100.0	31.71	138.60	3,018.1	-326.5	287.8	-242.8	0.00	0.00	0.00
3,200.0	31.71	138.60	3,103.2	-366.0	322.6	-272.2	0.00	0.00	0.00
3,300.0	31.71	138.60	3,188.3	-405.4	357.3	-301.5	0.00	0.00	0.00
3,400.0	31.71	138.60	3,273.4	-444.8	392.1	-330.8	0.00	0.00	0.00
3,500.0	31.71	138.60	3,358.4	-484.2	426.9	-360.1	0.00	0.00	0.00
3,600.0	31.71	138.60	3,443.5	-523.7	461.6	-389.5	0.00	0.00	0.00
3,700.0	31.71	138.60	3,528.6	-563.1	496.4	-418.8	0.00	0.00	0.00
3,800.0	31.71	138.60	3,613.7	-602.5	531.1	-448.1	0.00	0.00	0.00
3,900.0	31.71	138.60	3,698.7	-641.9	565.9	-477.4	0.00	0.00	0.00
4,000.0	31.71	138.60	3,783.8	-681.4	600.6	-506.7	0.00	0.00	0.00
4,100.0	31.71	138.60	3,868.9	-720.8	635.4	-536.1	0.00	0.00	0.00
4,200.0	31.71	138.60	3,953.9	-760.2	670.1	-565.4	0.00	0.00	0.00
4,300.0	31.71	138.60	4,039.0	-799.6	704.9	-594.7	0.00	0.00	0.00
4,400.0	31.71	138.60	4,124.1	-839.1	739.6	-624.0	0.00	0.00	0.00
4,500.0	31.71	138.60	4,209.2	-878.5	774.4	-653.4	0.00	0.00	0.00
4,600.0	31.71	138.60	4,294.2	-917.9	809.1	-682.7	0.00	0.00	0.00
4,700.0	31.71	138.60	4,379.3	-957.3	843.9	-712.0	0.00	0.00	0.00
4,800.0	31.71	138.60	4,464.4	-996.8	878.7	-741.3	0.00	0.00	0.00
4,900.0	31.71	138.60	4,549.5	-1,036.2	913.4	-770.6	0.00	0.00	0.00
5,000.0	31.71	138.60	4,634.5	-1,075.6	948.2	-800.0	0.00	0.00	0.00
5,100.0	31.71	138.60	4,719.6	-1,115.0	982.9	-829.3	0.00	0.00	0.00
5,200.0	31.71	138.60	4,804.7	-1,154.5	1,017.7	-858.6	0.00	0.00	0.00



Database:	EDM	Local Co-ordinate Reference:	Well GROVES FARM T-34-33HN
Company:	Bayswater Exploration & Production, LLC	TVD Reference:	KB @ 4869.0usft (Original Well Elev)
Project:	DJ Basin	MD Reference:	KB @ 4869.0usft (Original Well Elev)
Site:	Groves Farm 34-L Pad	North Reference:	True
Well:	GROVES FARM T-34-33HN	Survey Calculation Method:	Minimum Curvature
Wellbore:	Wellbore #1		
Design:	Design #1		

Planned Survey									
Measured Depth (usft)	Inclination (°)	Azimuth (°)	Vertical Depth (usft)	+N/-S (usft)	+E/-W (usft)	Vertical Section (usft)	Dogleg Rate (°/100usft)	Build Rate (°/100usft)	Turn Rate (°/100usft)
5,212.6	31.71	138.60	4,815.4	-1,159.4	1,022.0	-862.3	0.00	0.00	0.00
5,300.0	29.96	138.60	4,890.5	-1,193.0	1,051.7	-887.3	2.00	-2.00	0.00
5,400.0	27.96	138.60	4,978.0	-1,229.4	1,083.7	-914.3	2.00	-2.00	0.00
5,500.0	25.96	138.60	5,067.1	-1,263.4	1,113.7	-939.6	2.00	-2.00	0.00
5,600.0	23.96	138.60	5,157.7	-1,295.0	1,141.6	-963.1	2.00	-2.00	0.00
5,700.0	21.96	138.60	5,249.8	-1,324.3	1,167.4	-984.9	2.00	-2.00	0.00
5,800.0	19.96	138.60	5,343.2	-1,351.1	1,191.0	-1,004.9	2.00	-2.00	0.00
5,900.0	17.96	138.60	5,437.8	-1,375.5	1,212.5	-1,023.0	2.00	-2.00	0.00
6,000.0	15.96	138.60	5,533.4	-1,397.4	1,231.8	-1,039.2	2.00	-2.00	0.00
6,100.0	13.96	138.60	5,630.0	-1,416.7	1,248.8	-1,053.6	2.00	-2.00	0.00
6,200.0	11.96	138.60	5,727.5	-1,433.5	1,263.7	-1,066.2	2.00	-2.00	0.00
6,300.0	9.96	138.60	5,825.6	-1,447.8	1,276.2	-1,076.8	2.00	-2.00	0.00
6,400.0	7.96	138.60	5,924.4	-1,459.5	1,286.5	-1,085.5	2.00	-2.00	0.00
6,500.0	5.96	138.60	6,023.7	-1,468.6	1,294.5	-1,092.2	2.00	-2.00	0.00
6,600.0	3.96	138.60	6,123.3	-1,475.0	1,300.3	-1,097.0	2.00	-2.00	0.00
6,700.0	1.96	138.60	6,223.2	-1,478.9	1,303.7	-1,099.9	2.00	-2.00	0.00
6,797.9	0.00	271.21	6,321.0	-1,480.2	1,304.8	-1,100.8	2.00	-2.00	0.00
6,800.0	0.00	0.00	6,323.1	-1,480.2	1,304.8	-1,100.8	0.00	0.00	0.00
6,900.0	0.00	0.00	6,423.1	-1,480.2	1,304.8	-1,100.8	0.00	0.00	0.00
6,997.9	0.00	271.21	6,521.0	-1,480.2	1,304.8	-1,100.8	0.00	0.00	0.00
7,000.0	0.21	271.21	6,523.1	-1,480.2	1,304.8	-1,100.8	10.00	10.00	0.00
7,100.0	10.21	271.21	6,622.6	-1,480.0	1,295.7	-1,091.9	10.00	10.00	0.00
7,200.0	20.21	271.21	6,719.0	-1,479.4	1,269.5	-1,066.0	10.00	10.00	0.00
7,300.0	30.21	271.21	6,809.3	-1,478.5	1,227.0	-1,023.9	10.00	10.00	0.00
7,400.0	40.21	271.21	6,890.9	-1,477.3	1,169.4	-967.0	10.00	10.00	0.00
7,500.0	50.21	271.21	6,961.3	-1,475.8	1,098.6	-896.9	10.00	10.00	0.00
7,600.0	60.21	271.21	7,018.3	-1,474.1	1,016.6	-815.9	10.00	10.00	0.00
7,700.0	70.21	271.21	7,060.2	-1,472.2	925.9	-726.2	10.00	10.00	0.00
7,800.0	80.21	271.21	7,085.7	-1,470.2	829.4	-630.8	10.00	10.00	0.00
7,896.5	89.86	271.21	7,094.0	-1,468.1	733.3	-535.8	10.00	10.00	0.00
GF T-34-33HN LP									
7,900.0	89.86	271.21	7,094.0	-1,468.1	729.9	-532.4	0.00	0.00	0.00
8,000.0	89.86	271.21	7,094.3	-1,466.0	629.9	-433.5	0.00	0.00	0.00
8,100.0	89.86	271.21	7,094.5	-1,463.9	529.9	-334.7	0.00	0.00	0.00
8,200.0	89.86	271.21	7,094.7	-1,461.8	429.9	-235.8	0.00	0.00	0.00
8,300.0	89.86	271.21	7,095.0	-1,459.7	329.9	-137.0	0.00	0.00	0.00
8,400.0	89.86	271.21	7,095.2	-1,457.5	230.0	-38.1	0.00	0.00	0.00
8,500.0	89.86	271.21	7,095.5	-1,455.4	130.0	60.7	0.00	0.00	0.00
8,600.0	89.86	271.21	7,095.7	-1,453.3	30.0	159.6	0.00	0.00	0.00
8,700.0	89.86	271.21	7,096.0	-1,451.2	-70.0	258.4	0.00	0.00	0.00
8,800.0	89.86	271.21	7,096.2	-1,449.1	-169.9	357.3	0.00	0.00	0.00
8,900.0	89.86	271.21	7,096.4	-1,447.0	-269.9	456.1	0.00	0.00	0.00
9,000.0	89.86	271.21	7,096.7	-1,444.9	-369.9	555.0	0.00	0.00	0.00
9,100.0	89.86	271.21	7,096.9	-1,442.8	-469.9	653.8	0.00	0.00	0.00
9,200.0	89.86	271.21	7,097.2	-1,440.7	-569.9	752.7	0.00	0.00	0.00
9,300.0	89.86	271.21	7,097.4	-1,438.6	-669.8	851.5	0.00	0.00	0.00
9,400.0	89.86	271.21	7,097.7	-1,436.5	-769.8	950.4	0.00	0.00	0.00
9,500.0	89.86	271.21	7,097.9	-1,434.4	-869.8	1,049.2	0.00	0.00	0.00
9,600.0	89.86	271.21	7,098.1	-1,432.3	-969.8	1,148.1	0.00	0.00	0.00
9,700.0	89.86	271.21	7,098.4	-1,430.2	-1,069.7	1,246.9	0.00	0.00	0.00
9,800.0	89.86	271.21	7,098.6	-1,428.1	-1,169.7	1,345.8	0.00	0.00	0.00
9,900.0	89.86	271.21	7,098.9	-1,426.0	-1,269.7	1,444.6	0.00	0.00	0.00
10,000.0	89.86	271.21	7,099.1	-1,423.9	-1,369.7	1,543.5	0.00	0.00	0.00



Database:	EDM	Local Co-ordinate Reference:	Well GROVES FARM T-34-33HN
Company:	Bayswater Exploration & Production, LLC	TVD Reference:	KB @ 4869.0usft (Original Well Elev)
Project:	DJ Basin	MD Reference:	KB @ 4869.0usft (Original Well Elev)
Site:	Groves Farm 34-L Pad	North Reference:	True
Well:	GROVES FARM T-34-33HN	Survey Calculation Method:	Minimum Curvature
Wellbore:	Wellbore #1		
Design:	Design #1		

Planned Survey										
Measured Depth (usft)	Inclination (°)	Azimuth (°)	Vertical Depth (usft)	+N/-S (usft)	+E/-W (usft)	Vertical Section (usft)	Dogleg Rate (°/100usft)	Build Rate (°/100usft)	Turn Rate (°/100usft)	
10,100.0	89.86	271.21	7,099.4	-1,421.8	-1,469.6	1,642.3	0.00	0.00	0.00	
10,200.0	89.86	271.21	7,099.6	-1,419.7	-1,569.6	1,741.2	0.00	0.00	0.00	
10,300.0	89.86	271.21	7,099.9	-1,417.6	-1,669.6	1,840.0	0.00	0.00	0.00	
10,400.0	89.86	271.21	7,100.1	-1,415.5	-1,769.6	1,938.9	0.00	0.00	0.00	
10,500.0	89.86	271.21	7,100.3	-1,413.3	-1,869.6	2,037.7	0.00	0.00	0.00	
10,600.0	89.86	271.21	7,100.6	-1,411.2	-1,969.5	2,136.6	0.00	0.00	0.00	
10,700.0	89.86	271.21	7,100.8	-1,409.1	-2,069.5	2,235.4	0.00	0.00	0.00	
10,800.0	89.86	271.21	7,101.1	-1,407.0	-2,169.5	2,334.3	0.00	0.00	0.00	
10,900.0	89.86	271.21	7,101.3	-1,404.9	-2,269.5	2,433.1	0.00	0.00	0.00	
11,000.0	89.86	271.21	7,101.6	-1,402.8	-2,369.4	2,532.0	0.00	0.00	0.00	
11,100.0	89.86	271.21	7,101.8	-1,400.7	-2,469.4	2,630.9	0.00	0.00	0.00	
11,200.0	89.86	271.21	7,102.0	-1,398.6	-2,569.4	2,729.7	0.00	0.00	0.00	
11,300.0	89.86	271.21	7,102.3	-1,396.5	-2,669.4	2,828.6	0.00	0.00	0.00	
11,400.0	89.86	271.21	7,102.5	-1,394.4	-2,769.4	2,927.4	0.00	0.00	0.00	
11,500.0	89.86	271.21	7,102.8	-1,392.3	-2,869.3	3,026.3	0.00	0.00	0.00	
11,600.0	89.86	271.21	7,103.0	-1,390.2	-2,969.3	3,125.1	0.00	0.00	0.00	
11,700.0	89.86	271.21	7,103.3	-1,388.1	-3,069.3	3,224.0	0.00	0.00	0.00	
11,800.0	89.86	271.21	7,103.5	-1,386.0	-3,169.3	3,322.8	0.00	0.00	0.00	
11,900.0	89.86	271.21	7,103.7	-1,383.9	-3,269.2	3,421.7	0.00	0.00	0.00	
12,000.0	89.86	271.21	7,104.0	-1,381.8	-3,369.2	3,520.5	0.00	0.00	0.00	
12,100.0	89.86	271.21	7,104.2	-1,379.7	-3,469.2	3,619.4	0.00	0.00	0.00	
12,200.0	89.86	271.21	7,104.5	-1,377.6	-3,569.2	3,718.2	0.00	0.00	0.00	
12,300.0	89.86	271.21	7,104.7	-1,375.5	-3,669.2	3,817.1	0.00	0.00	0.00	
12,400.0	89.86	271.21	7,105.0	-1,373.4	-3,769.1	3,915.9	0.00	0.00	0.00	
12,500.0	89.86	271.21	7,105.2	-1,371.3	-3,869.1	4,014.8	0.00	0.00	0.00	
12,600.0	89.86	271.21	7,105.5	-1,369.2	-3,969.1	4,113.6	0.00	0.00	0.00	
12,700.0	89.86	271.21	7,105.7	-1,367.0	-4,069.1	4,212.5	0.00	0.00	0.00	
12,800.0	89.86	271.21	7,105.9	-1,364.9	-4,169.0	4,311.3	0.00	0.00	0.00	
12,900.0	89.86	271.21	7,106.2	-1,362.8	-4,269.0	4,410.2	0.00	0.00	0.00	
13,000.0	89.86	271.21	7,106.4	-1,360.7	-4,369.0	4,509.0	0.00	0.00	0.00	
13,100.0	89.86	271.21	7,106.7	-1,358.6	-4,469.0	4,607.9	0.00	0.00	0.00	
13,200.0	89.86	271.21	7,106.9	-1,356.5	-4,569.0	4,706.7	0.00	0.00	0.00	
13,300.0	89.86	271.21	7,107.2	-1,354.4	-4,668.9	4,805.6	0.00	0.00	0.00	
13,400.0	89.86	271.21	7,107.4	-1,352.3	-4,768.9	4,904.4	0.00	0.00	0.00	
13,500.0	89.86	271.21	7,107.6	-1,350.2	-4,868.9	5,003.3	0.00	0.00	0.00	
13,600.0	89.86	271.21	7,107.9	-1,348.1	-4,968.9	5,102.1	0.00	0.00	0.00	
13,700.0	89.86	271.21	7,108.1	-1,346.0	-5,068.8	5,201.0	0.00	0.00	0.00	
13,800.0	89.86	271.21	7,108.4	-1,343.9	-5,168.8	5,299.8	0.00	0.00	0.00	
13,900.0	89.86	271.21	7,108.6	-1,341.8	-5,268.8	5,398.7	0.00	0.00	0.00	
14,000.0	89.86	271.21	7,108.9	-1,339.7	-5,368.8	5,497.5	0.00	0.00	0.00	
14,100.0	89.86	271.21	7,109.1	-1,337.6	-5,468.8	5,596.4	0.00	0.00	0.00	
14,200.0	89.86	271.21	7,109.4	-1,335.5	-5,568.7	5,695.2	0.00	0.00	0.00	
14,300.0	89.86	271.21	7,109.6	-1,333.4	-5,668.7	5,794.1	0.00	0.00	0.00	
14,400.0	89.86	271.21	7,109.8	-1,331.3	-5,768.7	5,893.0	0.00	0.00	0.00	
14,500.0	89.86	271.21	7,110.1	-1,329.2	-5,868.7	5,991.8	0.00	0.00	0.00	
14,600.0	89.86	271.21	7,110.3	-1,327.1	-5,968.6	6,090.7	0.00	0.00	0.00	
14,700.0	89.86	271.21	7,110.6	-1,325.0	-6,068.6	6,189.5	0.00	0.00	0.00	
14,800.0	89.86	271.21	7,110.8	-1,322.9	-6,168.6	6,288.4	0.00	0.00	0.00	
14,900.0	89.86	271.21	7,111.1	-1,320.7	-6,268.6	6,387.2	0.00	0.00	0.00	
15,000.0	89.86	271.21	7,111.3	-1,318.6	-6,368.5	6,486.1	0.00	0.00	0.00	
15,100.0	89.86	271.21	7,111.5	-1,316.5	-6,468.5	6,584.9	0.00	0.00	0.00	
15,200.0	89.86	271.21	7,111.8	-1,314.4	-6,568.5	6,683.8	0.00	0.00	0.00	
15,300.0	89.86	271.21	7,112.0	-1,312.3	-6,668.5	6,782.6	0.00	0.00	0.00	
15,400.0	89.86	271.21	7,112.3	-1,310.2	-6,768.5	6,881.5	0.00	0.00	0.00	



Database:	EDM	Local Co-ordinate Reference:	Well GROVES FARM T-34-33HN
Company:	Bayswater Exploration & Production, LLC	TVD Reference:	KB @ 4869.0usft (Original Well Elev)
Project:	DJ Basin	MD Reference:	KB @ 4869.0usft (Original Well Elev)
Site:	Groves Farm 34-L Pad	North Reference:	True
Well:	GROVES FARM T-34-33HN	Survey Calculation Method:	Minimum Curvature
Wellbore:	Wellbore #1		
Design:	Design #1		

Planned Survey										
Measured Depth (usft)	Inclination (°)	Azimuth (°)	Vertical Depth (usft)	+N/-S (usft)	+E/-W (usft)	Vertical Section (usft)	Dogleg Rate (°/100usft)	Build Rate (°/100usft)	Turn Rate (°/100usft)	
15,500.0	89.86	271.21	7,112.5	-1,308.1	-6,868.4	6,980.3	0.00	0.00	0.00	
15,600.0	89.86	271.21	7,112.8	-1,306.0	-6,968.4	7,079.2	0.00	0.00	0.00	
15,700.0	89.86	271.21	7,113.0	-1,303.9	-7,068.4	7,178.0	0.00	0.00	0.00	
15,800.0	89.86	271.21	7,113.2	-1,301.8	-7,168.4	7,276.9	0.00	0.00	0.00	
15,900.0	89.86	271.21	7,113.5	-1,299.7	-7,268.3	7,375.7	0.00	0.00	0.00	
16,000.0	89.86	271.21	7,113.7	-1,297.6	-7,368.3	7,474.6	0.00	0.00	0.00	
16,100.0	89.86	271.21	7,114.0	-1,295.5	-7,468.3	7,573.4	0.00	0.00	0.00	
16,200.0	89.86	271.21	7,114.2	-1,293.4	-7,568.3	7,672.3	0.00	0.00	0.00	
16,300.0	89.86	271.21	7,114.5	-1,291.3	-7,668.3	7,771.1	0.00	0.00	0.00	
16,400.0	89.86	271.21	7,114.7	-1,289.2	-7,768.2	7,870.0	0.00	0.00	0.00	
16,500.0	89.86	271.21	7,115.0	-1,287.1	-7,868.2	7,968.8	0.00	0.00	0.00	
16,600.0	89.86	271.21	7,115.2	-1,285.0	-7,968.2	8,067.7	0.00	0.00	0.00	
16,700.0	89.86	271.21	7,115.4	-1,282.9	-8,068.2	8,166.5	0.00	0.00	0.00	
16,800.0	89.86	271.21	7,115.7	-1,280.8	-8,168.1	8,265.4	0.00	0.00	0.00	
16,900.0	89.86	271.21	7,115.9	-1,278.7	-8,268.1	8,364.2	0.00	0.00	0.00	
17,000.0	89.86	271.21	7,116.2	-1,276.6	-8,368.1	8,463.1	0.00	0.00	0.00	
17,100.0	89.86	271.21	7,116.4	-1,274.4	-8,468.1	8,561.9	0.00	0.00	0.00	
17,200.0	89.86	271.21	7,116.7	-1,272.3	-8,568.1	8,660.8	0.00	0.00	0.00	
17,300.0	89.86	271.21	7,116.9	-1,270.2	-8,668.0	8,759.6	0.00	0.00	0.00	
17,400.0	89.86	271.21	7,117.1	-1,268.1	-8,768.0	8,858.5	0.00	0.00	0.00	
17,500.0	89.86	271.21	7,117.4	-1,266.0	-8,868.0	8,957.3	0.00	0.00	0.00	
17,600.0	89.86	271.21	7,117.6	-1,263.9	-8,968.0	9,056.2	0.00	0.00	0.00	
17,700.0	89.86	271.21	7,117.9	-1,261.8	-9,067.9	9,155.0	0.00	0.00	0.00	
17,800.0	89.86	271.21	7,118.1	-1,259.7	-9,167.9	9,253.9	0.00	0.00	0.00	
17,900.0	89.86	271.21	7,118.4	-1,257.6	-9,267.9	9,352.8	0.00	0.00	0.00	
18,000.0	89.86	271.21	7,118.6	-1,255.5	-9,367.9	9,451.6	0.00	0.00	0.00	
18,100.0	89.86	271.21	7,118.8	-1,253.4	-9,467.9	9,550.5	0.00	0.00	0.00	
18,161.9	89.86	271.21	7,119.0	-1,252.1	-9,529.8	9,611.7	0.00	0.00	0.00	
GF T-34-33HN PBHL										

Design Targets										
Target Name	Dip Angle (°)	Dip Dir. (°)	TVD (usft)	+N/-S (usft)	+E/-W (usft)	Northing (usft)	Easting (usft)	Latitude	Longitude	
- hit/miss target										
- Shape										
GF T-34-33HN LP	0.00	0.00	7,094.0	-1,468.1	733.3	1,435,619.88	3,238,987.72	40° 31' 33.589 N	104° 38' 25.066 W	
- plan hits target center										
- Point										
GF T-34-33HN PBHL	0.00	0.00	7,119.0	-1,252.1	-9,529.8	1,435,736.72	3,228,722.98	40° 31' 35.706 N	104° 40' 37.974 W	
- plan hits target center										
- Point										