



**BAYSWATER**  
EXPLORATION & PRODUCTION, LLC

VIA USPS

April 22, 2020

Noble Energy Inc.  
1625 Broadway, Suite 2200  
Denver, Colorado 80202

**RE: COGCC Rule 317.s. Statewide Fracture Stimulation Setback  
Groves Farm 34-L Pad: NESE Section 34, Township 7 North, Range 65 West  
Weld County, Colorado**

Ladies and Gentlemen:

Bayswater Exploration and Production, LLC (Bayswater) is applying to the Colorado Oil and Gas Conservation Commission (COGCC) to drill wells on the above referenced pad. COGCC Rule 317.s. stipulates that no portion of a proposed wellbore's treated interval shall be located within 150 feet from an existing (producing, shut-in, or temporarily abandoned) or permitted oil and gas wellbore's treated interval without the signed written consent from the operator of the encroached upon wellbore. As currently planned, the following wells have treated intervals within 150 feet of the proposed horizontal wells' treated intervals:

**Johnson PC EE33-10D (API: 05-123-33283), 96' offset from Groves Farm O-34-33HN**

**Johnson PC EE33-09D (API: 05-123-33289), 73' offset from Groves Farm O-34-33HN**

**Johnson PC EE33-23D (API: 05-123-33282), 103' offset from Groves Farm R-34-33HC, 126' offset from Groves Farm S-34-33HN**

**Johnson PC EE33-15D (API: 05-123-33286), 140' offset from Groves Farm U-34-33HN, 98' offset from Groves Farm V-34-33HC**

**Johnson PC EE33-16D (API: 05-123-33284), 142' offset from Groves Farm V-34-33HC**

Pursuant to Rule 317.s., the signed written consent shall be attached to the Applications for Permit to Drill Form 2 for the proposed wellbores. The distance between wellbores measurement shall be based upon the directional survey for drilled wellbores and the deviated drilling plan for permitted wellbores, or as otherwise reflected in the COGCC well records. The distance shall be measured from the perforation or mechanical isolation device.

Per COGCC Rule 317.s., Bayswater is requesting operator consent of the encroached upon setback for the existing wells referenced above. Should you find this acceptable, please so indicate by executing this consent and returning in the self-addressed stamped envelope provided herein. If you should have any questions or require additional information, please do not hesitate in contacting me at 303.293.2503.

Respectfully,

Mark E. Brown  
Operations Manager

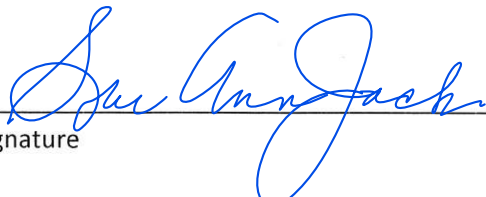
Enclosures: Stimulation Setback Consent Signature Page  
Self-addressed stamped envelope  
Groves Farm 34-L Pad Multi-Well Plan



**NOBLE ENERGY INC.**

**RE: COGCC Rule 317.s. Statewide Fracture Stimulation Setback  
Groves Farm 34-L Pad: NESE Section 34, Township 7 North, Range 65 West  
Weld County, Colorado**

I, Sue Ann Jack, acting as self, officer, agent or employee of Noble Energy Inc., operator of the Johnson PC EE33-10D (API: 05-123-33283), Johnson PC EE33-09D (API: 05-123-33289), Johnson PC EE33-23D (API: 05-123-33282), Johnson PC EE33-15D (API: 05-123-33286), and Johnson PC EE33-16D (API: 05-123-33284), with full power to execute the following, do hereby give consent to Bayswater Exploration and Production, LLC to stimulate Groves Farm O-34-33HN, Groves Farm R-34-33HC, Groves Farm S-34-33HN, Groves Farm U-34-33HN, and Groves Farm V-34-33HC wells within the COGCC Rule 317.s. Statewide Fracture Stimulation Setback.

 5/26/2020  
Signature Date

Sue Ann Jack, Land Manager - Non-Ops  
Printed Name

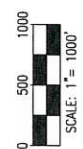
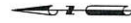
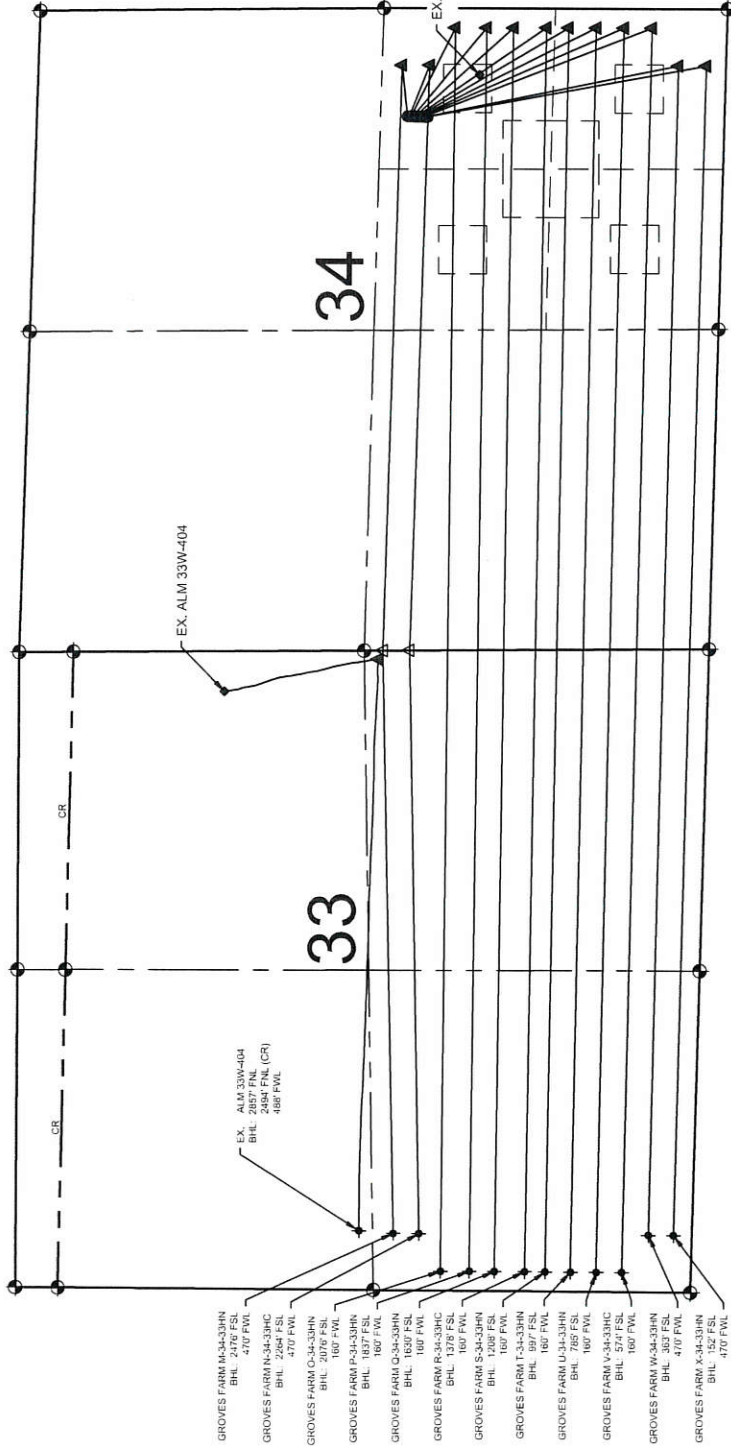
# GROVES FARM 34-L PAD MULTI-WELL PLAN

## NOTES:

1. THIS FIELD SURVEY CONFORMS TO THE MINIMUM STANDARDS SET BY THE COGCC, RULE NO. 215
2. ALL DISTANCES AND BEARINGS SHOWN HEREON ARE GROUND VALUES AS GPS MEASURED IN THE FIELD, WITH TIES TO WELLS MEASURED PERPENDICULAR TO LINES SHOWN HEREON. THIS LOW DISTORTION PROJECTION (LDP) IS BASED ON THE NORTH AMERICAN DATUM OF 1983, U.S. SURVEY FOOT WITH A LATITUDE ORIGIN OF 40-481168" N, A CENTRAL MERIDIAN LONGITUDE OF 104-773359" W, AND A SCALE FACTOR ON THE CENTRAL MERIDIAN OF 1.000221 (EXACT). THE LDP BASIS OF BEARINGS IS GEODETIC NORTH.
3. FIELD VERIFICATION OF MONUMENTS COMPLETED WITHIN 1 YEAR OF SIGNATURE DATE, UNLESS OTHERWISE NOTED

## NOTES:

- GROVES FARM M-34-33HN TO BE AT 2636' FSL & 892' FEL  
BOTTOM HOLE AT 2476' FSL & 470' FWL, SEC 33.  
GROVES FARM N-34-33HC TO BE AT 2621' FSL & 892' FEL  
BOTTOM HOLE AT 2264' FSL & 470' FWL, SEC 33.  
GROVES FARM O-34-33HN TO BE AT 2606' FSL & 892' FEL  
BOTTOM HOLE AT 2076' FSL & 160' FWL, SEC 33.  
GROVES FARM P-34-33HN TO BE AT 2591' FSL & 893' FEL  
BOTTOM HOLE AT 1837' FSL & 160' FWL, SEC 33.  
GROVES FARM Q-34-33HN TO BE AT 2576' FSL & 893' FEL  
BOTTOM HOLE AT 1630' FSL & 160' FWL, SEC 33.  
GROVES FARM R-34-33HC TO BE AT 2561' FSL & 894' FEL  
BOTTOM HOLE AT 1378' FSL & 160' FWL, SEC 33.  
GROVES FARM S-34-33HN TO BE AT 2546' FSL & 894' FEL  
BOTTOM HOLE AT 1208' FSL & 160' FWL, SEC 33.  
GROVES FARM T-34-33HN TO BE AT 2531' FSL & 894' FEL  
BOTTOM HOLE AT 997' FSL & 160' FWL, SEC 33.  
GROVES FARM U-34-33HN TO BE AT 2516' FSL & 895' FEL  
BOTTOM HOLE AT 785' FSL & 160' FWL, SEC 33.  
GROVES FARM V-34-33HC TO BE AT 2503' FSL & 895' FEL  
BOTTOM HOLE AT 574' FSL & 160' FWL, SEC 33.  
GROVES FARM W-34-33HN TO BE AT 2486' FSL & 896' FEL  
BOTTOM HOLE AT 363' FSL & 470' FWL, SEC 33.  
GROVES FARM X-34-33HN TO BE AT 2471' FSL & 896' FEL  
BOTTOM HOLE AT 152' FSL & 470' FWL, SEC 33.  
GROVES 43-34 (EXISTING) IS AT 2048' FSL & 548' FEL, SEC 33.  
ALM 33W-404 (EXISTING) IS AT 1707' FNL OR 1261' FNL (CR) & 331' FEL, SEC 34.



- LEGEND**
- = EXISTING MONUMENT
  - = CALCULATED POSITION
  - = PROPOSED WELL
  - = BOTTOM HOLE
  - = COMMON REPORT LINE
  - △ = VERTEX POINT

	FILED DATE 04-25-19	WELL NAME GROVES FARM 34-L PAD
	EXPIRATION DATE 10-24-19	SURFACE LOCATION NE 1/4 SE 1/4 SEC. 34, T7N, R65W, 6TH P.M. WELD COUNTY, COLORADO
BY JAG	CHECKED JUM	PREPARED FOR BAYSWATER SURFACING PRODUCTION, LLC