



**BAYSWATER**

# **Bayswater Exploration & Production, LLC**

**DJ Basin**

**Groves Farm 34-L Pad**

**GROVES FARM S-34-33HN**

**Wellbore #1**

**Plan: Design #1**

## **Standard Planning Report**

**20 April, 2020**



Pad Name: Groves Farm 34-L Pad  
Well Name: GROVES FARM S-34-33HN  
Ground Level: 4844.0  
SHL Latitude: 40° 31' 48.245 N  
SHL Longitude: 104° 38' 34.559 W

## SECTION DETAILS

Sec	MD	Inc	Azi	TVD	+N/-S	+E/-W	Dleg	TFace	VSect	Target
1	0.0	0.00	0.00	0.0	0.0	0.0	0.00	0.00	0.0	
2	1500.0	0.00	0.00	1500.0	0.0	0.0	0.00	0.00	0.0	
3	3002.3	30.05	134.05	2934.4	-267.7	276.7	2.00	134.05	-245.5	
4	5095.9	30.05	134.05	4746.6	-996.5	1030.1	0.00	0.00	-914.0	
5	6598.2	0.00	271.10	6181.0	-1264.2	1306.7	2.00	180.00	-1159.5	
6	6798.2	0.00	271.10	6381.0	-1264.2	1306.7	0.00	0.00	-1159.5	
7	7698.8	90.06	271.10	6954.0	-1253.2	733.3	10.00	0.00	-590.8	GF S-34-33HN LP
8	17962.9	90.06	271.10	6944.0	-1056.1	-9528.9	0.00	0.00	9587.2	GF S-34-33HN PBHL

## DESIGN TARGET DETAILS

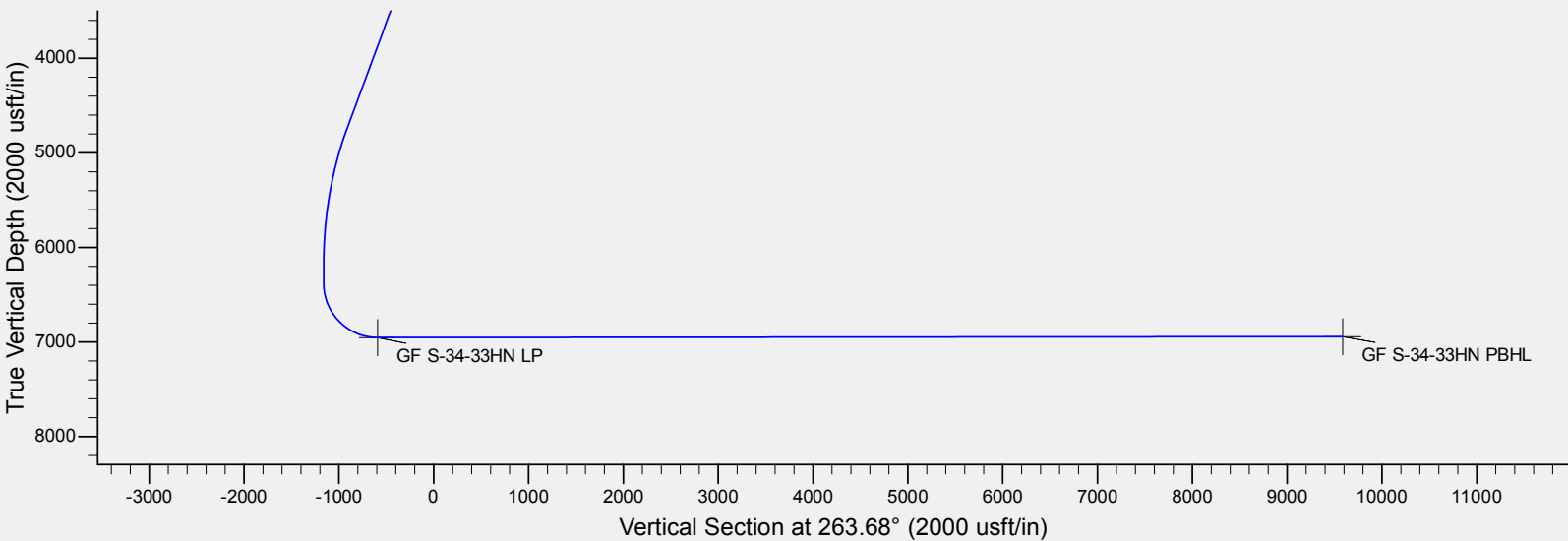
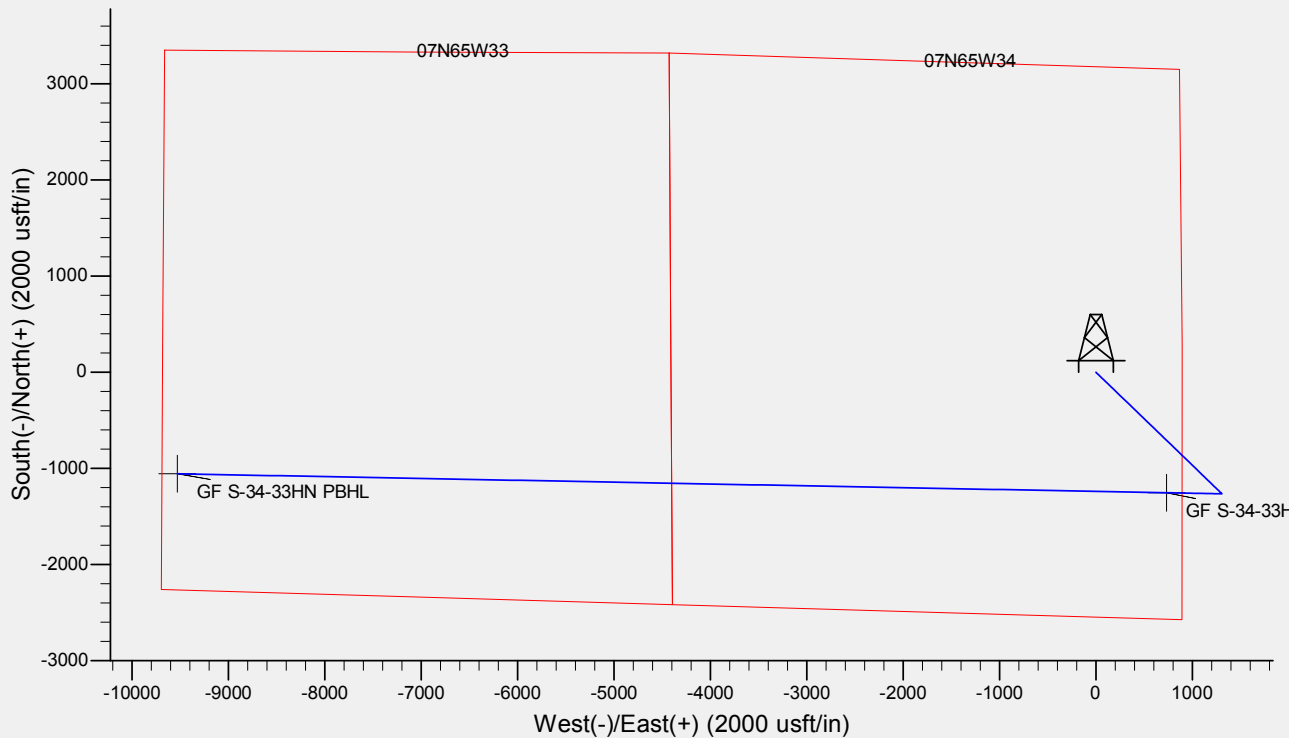
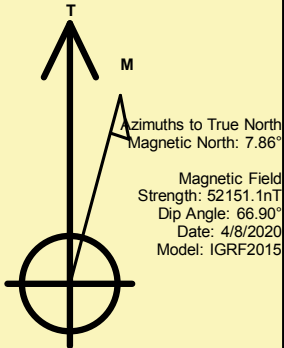
Name	TVD	+N/-S	+E/-W	Northing	Easting	Latitude	Longitude	Shape
GF S-34-33HN LP	6954.0	-1253.2	733.3	1435849.75	3238985.76	40° 31' 35.861 N	104° 38' 25.062 W	Point
GF S-34-33HN PBHL	- plan hits target center 6944.0	-1056.1	-9528.9	1435947.66	3228722.13	40° 31' 37.790 N	104° 40' 37.960 W	Point
	- plan hits target center							

## REFERENCE INFORMATION

Co-ordinate (N/E) Reference: Well GROVES FARM S-34-33HN, True North  
Vertical (TVD) Reference: KB @ 4869.0usft (Original Well Elev)  
Section (VS) Reference: Slot - (0.0N, 0.0E)  
Measured Depth Reference: KB @ 4869.0usft (Original Well Elev)  
Calculation Method: Minimum Curvature

## CASING DETAILS

No casing data is available





<b>Database:</b>	EDM	<b>Local Co-ordinate Reference:</b>	Well GROVES FARM S-34-33HN
<b>Company:</b>	Bayswater Exploration & Production, LLC	<b>TVD Reference:</b>	KB @ 4869.0usft (Original Well Elev)
<b>Project:</b>	DJ Basin	<b>MD Reference:</b>	KB @ 4869.0usft (Original Well Elev)
<b>Site:</b>	Groves Farm 34-L Pad	<b>North Reference:</b>	True
<b>Well:</b>	GROVES FARM S-34-33HN	<b>Survey Calculation Method:</b>	Minimum Curvature
<b>Wellbore:</b>	Wellbore #1		
<b>Design:</b>	Design #1		

<b>Project</b>	DJ Basin, DJ Basin		
<b>Map System:</b>	US State Plane 1983	<b>System Datum:</b>	Mean Sea Level
<b>Geo Datum:</b>	North American Datum 1983		
<b>Map Zone:</b>	Colorado Northern Zone		

Site	Groves Farm 34-L Pad				
Site Position:		Northing:	1,437,185.82 usft	Latitude:	40° 31' 49.134 N
From:	Lat/Long	Easting:	3,238,241.98 usft	Longitude:	104° 38' 34.526 W
Position Uncertainty:	0.0 usft	Slot Radius:	13-3/16 "	Grid Convergence:	0.55 °

Well	GROVES FARM S-34-33HN					
Well Position	+N/-S	-90.0 usft	Northing:	1,437,095.81 usft	Latitude:	40° 31' 48.245 N
	+E/-W	-2.5 usft	Easting:	3,238,240.35 usft	Longitude:	104° 38' 34.559 W
Position Uncertainty		0.0 usft	Wellhead Elevation:		Ground Level:	4,844.0 usft

<b>Wellbore</b>	Wellbore #1				
<b>Magnetics</b>	<b>Model Name</b>	<b>Sample Date</b>	<b>Declination (°)</b>	<b>Dip Angle (°)</b>	<b>Field Strength (nT)</b>
	IGRF2015	4/8/2020	7.86	66.90	52,151.08919114

<b>Design</b>	Design #1			
<b>Audit Notes:</b>				
<b>Version:</b>	<b>Phase:</b>	PLAN	<b>Tie On Depth:</b>	0.0
<b>Vertical Section:</b>	<b>Depth From (TVD) (usft)</b>	<b>+N/-S (usft)</b>	<b>+E/-W (usft)</b>	<b>Direction (°)</b>
	0.0	0.0	0.0	263.68

<b>Plan Survey Tool Program</b>	<b>Date</b>	4/20/2020		
<b>Depth From (usft)</b>	<b>Depth To (usft)</b>	<b>Survey (Wellbore)</b>	<b>Tool Name</b>	<b>Remarks</b>
1	0.0	17,962.9	Design #1 (Wellbore #1)	MWD
				OWSG MWD - Standard

<b>Plan Sections</b>										
<b>Measured Depth (usft)</b>	<b>Inclination (°)</b>	<b>Azimuth (°)</b>	<b>Vertical Depth (usft)</b>	<b>+N/-S (usft)</b>	<b>+E/-W (usft)</b>	<b>Dogleg Rate (°/100usft)</b>	<b>Build Rate (°/100usft)</b>	<b>Turn Rate (°/100usft)</b>	<b>TFO (°)</b>	<b>Target</b>
0.0	0.00	0.00	0.0	0.0	0.0	0.00	0.00	0.00	0.00	
1,500.0	0.00	0.00	1,500.0	0.0	0.0	0.00	0.00	0.00	0.00	
3,002.3	30.05	134.05	2,934.4	-267.7	276.7	2.00	2.00	0.00	134.05	
5,095.9	30.05	134.05	4,746.6	-996.5	1,030.1	0.00	0.00	0.00	0.00	
6,598.2	0.00	271.10	6,181.0	-1,264.2	1,306.7	2.00	-2.00	0.00	180.00	
6,798.2	0.00	271.10	6,381.0	-1,264.2	1,306.7	0.00	0.00	0.00	0.00	
7,698.8	90.06	271.10	6,954.0	-1,253.2	733.3	10.00	10.00	0.00	0.00	GF S-34-33HN LP
17,962.9	90.06	271.10	6,944.0	-1,056.1	-9,528.9	0.00	0.00	0.00	0.00	GF S-34-33HN PBHL



<b>Database:</b>	EDM	<b>Local Co-ordinate Reference:</b>	Well GROVES FARM S-34-33HN
<b>Company:</b>	Bayswater Exploration & Production, LLC	<b>TVD Reference:</b>	KB @ 4869.0usft (Original Well Elev)
<b>Project:</b>	DJ Basin	<b>MD Reference:</b>	KB @ 4869.0usft (Original Well Elev)
<b>Site:</b>	Groves Farm 34-L Pad	<b>North Reference:</b>	True
<b>Well:</b>	GROVES FARM S-34-33HN	<b>Survey Calculation Method:</b>	Minimum Curvature
<b>Wellbore:</b>	Wellbore #1		
<b>Design:</b>	Design #1		

Planned Survey									
Measured Depth (usft)	Inclination (°)	Azimuth (°)	Vertical Depth (usft)	+N/-S (usft)	+E/-W (usft)	Vertical Section (usft)	Dogleg Rate (°/100usft)	Build Rate (°/100usft)	Turn Rate (°/100usft)
0.0	0.00	0.00	0.0	0.0	0.0	0.0	0.00	0.00	0.00
100.0	0.00	0.00	100.0	0.0	0.0	0.0	0.00	0.00	0.00
200.0	0.00	0.00	200.0	0.0	0.0	0.0	0.00	0.00	0.00
300.0	0.00	0.00	300.0	0.0	0.0	0.0	0.00	0.00	0.00
400.0	0.00	0.00	400.0	0.0	0.0	0.0	0.00	0.00	0.00
500.0	0.00	0.00	500.0	0.0	0.0	0.0	0.00	0.00	0.00
600.0	0.00	0.00	600.0	0.0	0.0	0.0	0.00	0.00	0.00
700.0	0.00	0.00	700.0	0.0	0.0	0.0	0.00	0.00	0.00
800.0	0.00	0.00	800.0	0.0	0.0	0.0	0.00	0.00	0.00
900.0	0.00	0.00	900.0	0.0	0.0	0.0	0.00	0.00	0.00
1,000.0	0.00	0.00	1,000.0	0.0	0.0	0.0	0.00	0.00	0.00
1,100.0	0.00	0.00	1,100.0	0.0	0.0	0.0	0.00	0.00	0.00
1,200.0	0.00	0.00	1,200.0	0.0	0.0	0.0	0.00	0.00	0.00
1,300.0	0.00	0.00	1,300.0	0.0	0.0	0.0	0.00	0.00	0.00
1,400.0	0.00	0.00	1,400.0	0.0	0.0	0.0	0.00	0.00	0.00
1,500.0	0.00	0.00	1,500.0	0.0	0.0	0.0	0.00	0.00	0.00
1,600.0	2.00	134.05	1,600.0	-1.2	1.3	-1.1	2.00	2.00	0.00
1,700.0	4.00	134.05	1,699.8	-4.9	5.0	-4.5	2.00	2.00	0.00
1,800.0	6.00	134.05	1,799.5	-10.9	11.3	-10.0	2.00	2.00	0.00
1,900.0	8.00	134.05	1,898.7	-19.4	20.0	-17.8	2.00	2.00	0.00
2,000.0	10.00	134.05	1,997.5	-30.3	31.3	-27.8	2.00	2.00	0.00
2,100.0	12.00	134.05	2,095.6	-43.5	45.0	-39.9	2.00	2.00	0.00
2,200.0	14.00	134.05	2,193.1	-59.2	61.2	-54.3	2.00	2.00	0.00
2,300.0	16.00	134.05	2,289.6	-77.2	79.8	-70.8	2.00	2.00	0.00
2,400.0	18.00	134.05	2,385.3	-97.5	100.8	-89.4	2.00	2.00	0.00
2,500.0	20.00	134.05	2,479.8	-120.1	124.2	-110.2	2.00	2.00	0.00
2,600.0	22.00	134.05	2,573.2	-145.0	149.9	-133.0	2.00	2.00	0.00
2,700.0	24.00	134.05	2,665.2	-172.2	178.0	-158.0	2.00	2.00	0.00
2,800.0	26.00	134.05	2,755.8	-201.6	208.4	-184.9	2.00	2.00	0.00
2,900.0	28.00	134.05	2,844.9	-233.2	241.0	-213.9	2.00	2.00	0.00
3,000.0	30.00	134.05	2,932.4	-266.9	275.8	-244.8	2.00	2.00	0.00
3,002.3	30.05	134.05	2,934.4	-267.7	276.7	-245.5	2.00	2.00	0.00
3,100.0	30.05	134.05	3,019.0	-301.7	311.8	-276.7	0.00	0.00	0.00
3,200.0	30.05	134.05	3,105.5	-336.5	347.8	-308.6	0.00	0.00	0.00
3,300.0	30.05	134.05	3,192.1	-371.3	383.8	-340.6	0.00	0.00	0.00
3,400.0	30.05	134.05	3,278.6	-406.1	419.8	-372.5	0.00	0.00	0.00
3,500.0	30.05	134.05	3,365.2	-440.9	455.8	-404.4	0.00	0.00	0.00
3,600.0	30.05	134.05	3,451.8	-475.8	491.8	-436.4	0.00	0.00	0.00
3,700.0	30.05	134.05	3,538.3	-510.6	527.7	-468.3	0.00	0.00	0.00
3,800.0	30.05	134.05	3,624.9	-545.4	563.7	-500.2	0.00	0.00	0.00
3,900.0	30.05	134.05	3,711.5	-580.2	599.7	-532.2	0.00	0.00	0.00
4,000.0	30.05	134.05	3,798.0	-615.0	635.7	-564.1	0.00	0.00	0.00
4,100.0	30.05	134.05	3,884.6	-649.8	671.7	-596.0	0.00	0.00	0.00
4,200.0	30.05	134.05	3,971.1	-684.6	707.7	-627.9	0.00	0.00	0.00
4,300.0	30.05	134.05	4,057.7	-719.5	743.7	-659.9	0.00	0.00	0.00
4,400.0	30.05	134.05	4,144.3	-754.3	779.6	-691.8	0.00	0.00	0.00
4,500.0	30.05	134.05	4,230.8	-789.1	815.6	-723.7	0.00	0.00	0.00
4,600.0	30.05	134.05	4,317.4	-823.9	851.6	-755.7	0.00	0.00	0.00
4,700.0	30.05	134.05	4,403.9	-858.7	887.6	-787.6	0.00	0.00	0.00
4,800.0	30.05	134.05	4,490.5	-893.5	923.6	-819.5	0.00	0.00	0.00
4,900.0	30.05	134.05	4,577.1	-928.3	959.6	-851.5	0.00	0.00	0.00
5,000.0	30.05	134.05	4,663.6	-963.2	995.6	-883.4	0.00	0.00	0.00
5,095.9	30.05	134.05	4,746.6	-996.5	1,030.1	-914.0	0.00	0.00	0.00
5,100.0	29.96	134.05	4,750.2	-998.0	1,031.5	-915.3	2.00	-2.00	0.00



<b>Database:</b>	EDM	<b>Local Co-ordinate Reference:</b>	Well GROVES FARM S-34-33HN
<b>Company:</b>	Bayswater Exploration & Production, LLC	<b>TVD Reference:</b>	KB @ 4869.0usft (Original Well Elev)
<b>Project:</b>	DJ Basin	<b>MD Reference:</b>	KB @ 4869.0usft (Original Well Elev)
<b>Site:</b>	Groves Farm 34-L Pad	<b>North Reference:</b>	True
<b>Well:</b>	GROVES FARM S-34-33HN	<b>Survey Calculation Method:</b>	Minimum Curvature
<b>Wellbore:</b>	Wellbore #1		
<b>Design:</b>	Design #1		

Planned Survey									
Measured Depth (usft)	Inclination (°)	Azimuth (°)	Vertical Depth (usft)	+N/-S (usft)	+E/-W (usft)	Vertical Section (usft)	Dogleg Rate (°/100usft)	Build Rate (°/100usft)	Turn Rate (°/100usft)
5,200.0	27.96	134.05	4,837.7	-1,031.6	1,066.3	-946.2	2.00	-2.00	0.00
5,300.0	25.96	134.05	4,926.8	-1,063.2	1,098.9	-975.1	2.00	-2.00	0.00
5,400.0	23.96	134.05	5,017.5	-1,092.5	1,129.3	-1,002.0	2.00	-2.00	0.00
5,500.0	21.96	134.05	5,109.5	-1,119.6	1,157.3	-1,026.9	2.00	-2.00	0.00
5,600.0	19.96	134.05	5,202.9	-1,144.5	1,183.0	-1,049.7	2.00	-2.00	0.00
5,700.0	17.96	134.05	5,297.5	-1,167.1	1,206.4	-1,070.5	2.00	-2.00	0.00
5,800.0	15.96	134.05	5,393.1	-1,187.4	1,227.3	-1,089.1	2.00	-2.00	0.00
5,900.0	13.96	134.05	5,489.7	-1,205.3	1,245.9	-1,105.5	2.00	-2.00	0.00
6,000.0	11.96	134.05	5,587.2	-1,220.9	1,262.0	-1,119.8	2.00	-2.00	0.00
6,100.0	9.96	134.05	5,685.3	-1,234.2	1,275.7	-1,132.0	2.00	-2.00	0.00
6,200.0	7.96	134.05	5,784.1	-1,245.0	1,286.9	-1,141.9	2.00	-2.00	0.00
6,300.0	5.96	134.05	5,883.4	-1,253.4	1,295.6	-1,149.6	2.00	-2.00	0.00
6,400.0	3.96	134.05	5,983.0	-1,259.4	1,301.8	-1,155.2	2.00	-2.00	0.00
6,500.0	1.96	134.05	6,082.9	-1,263.0	1,305.5	-1,158.5	2.00	-2.00	0.00
6,598.2	0.00	271.10	6,181.0	-1,264.2	1,306.7	-1,159.5	2.00	-2.00	0.00
6,600.0	0.00	0.00	6,182.8	-1,264.2	1,306.7	-1,159.5	0.00	0.00	0.00
6,700.0	0.00	0.00	6,282.8	-1,264.2	1,306.7	-1,159.5	0.00	0.00	0.00
6,798.2	0.00	271.10	6,381.0	-1,264.2	1,306.7	-1,159.5	0.00	0.00	0.00
6,800.0	0.18	271.10	6,382.8	-1,264.2	1,306.7	-1,159.5	10.00	10.00	0.00
6,900.0	10.18	271.10	6,482.3	-1,264.0	1,297.7	-1,150.6	10.00	10.00	0.00
7,000.0	20.18	271.10	6,578.7	-1,263.5	1,271.6	-1,124.7	10.00	10.00	0.00
7,100.0	30.18	271.10	6,669.1	-1,262.7	1,229.1	-1,082.5	10.00	10.00	0.00
7,200.0	40.18	271.10	6,750.7	-1,261.6	1,171.6	-1,025.5	10.00	10.00	0.00
7,300.0	50.18	271.10	6,821.1	-1,260.3	1,100.7	-955.2	10.00	10.00	0.00
7,400.0	60.18	271.10	6,878.1	-1,258.7	1,018.8	-873.9	10.00	10.00	0.00
7,500.0	70.18	271.10	6,920.1	-1,256.9	928.1	-784.0	10.00	10.00	0.00
7,600.0	80.18	271.10	6,945.6	-1,255.1	831.6	-688.3	10.00	10.00	0.00
7,698.8	90.06	271.10	6,954.0	-1,253.2	733.3	-590.8	10.00	10.00	0.00
GF S-34-33HN LP									
7,700.0	90.06	271.10	6,954.0	-1,253.2	732.1	-589.6	0.00	0.00	0.00
7,800.0	90.06	271.10	6,953.9	-1,251.3	632.1	-490.4	0.00	0.00	0.00
7,900.0	90.06	271.10	6,953.8	-1,249.3	532.1	-391.3	0.00	0.00	0.00
8,000.0	90.06	271.10	6,953.7	-1,247.4	432.2	-292.1	0.00	0.00	0.00
8,100.0	90.06	271.10	6,953.6	-1,245.5	332.2	-193.0	0.00	0.00	0.00
8,200.0	90.06	271.10	6,953.5	-1,243.6	232.2	-93.8	0.00	0.00	0.00
8,300.0	90.06	271.10	6,953.4	-1,241.7	132.2	5.4	0.00	0.00	0.00
8,400.0	90.06	271.10	6,953.3	-1,239.7	32.2	104.5	0.00	0.00	0.00
8,500.0	90.06	271.10	6,953.2	-1,237.8	-67.7	203.7	0.00	0.00	0.00
8,600.0	90.06	271.10	6,953.1	-1,235.9	-167.7	302.8	0.00	0.00	0.00
8,700.0	90.06	271.10	6,953.0	-1,234.0	-267.7	402.0	0.00	0.00	0.00
8,800.0	90.06	271.10	6,952.9	-1,232.1	-367.7	501.2	0.00	0.00	0.00
8,900.0	90.06	271.10	6,952.8	-1,230.1	-467.7	600.3	0.00	0.00	0.00
9,000.0	90.06	271.10	6,952.7	-1,228.2	-567.7	699.5	0.00	0.00	0.00
9,100.0	90.06	271.10	6,952.6	-1,226.3	-667.6	798.7	0.00	0.00	0.00
9,200.0	90.06	271.10	6,952.5	-1,224.4	-767.6	897.8	0.00	0.00	0.00
9,300.0	90.06	271.10	6,952.4	-1,222.5	-867.6	997.0	0.00	0.00	0.00
9,400.0	90.06	271.10	6,952.3	-1,220.5	-967.6	1,096.1	0.00	0.00	0.00
9,500.0	90.06	271.10	6,952.2	-1,218.6	-1,067.6	1,195.3	0.00	0.00	0.00
9,600.0	90.06	271.10	6,952.1	-1,216.7	-1,167.5	1,294.5	0.00	0.00	0.00
9,700.0	90.06	271.10	6,952.1	-1,214.8	-1,267.5	1,393.6	0.00	0.00	0.00
9,800.0	90.06	271.10	6,952.0	-1,212.9	-1,367.5	1,492.8	0.00	0.00	0.00
9,900.0	90.06	271.10	6,951.9	-1,210.9	-1,467.5	1,591.9	0.00	0.00	0.00
10,000.0	90.06	271.10	6,951.8	-1,209.0	-1,567.5	1,691.1	0.00	0.00	0.00



<b>Database:</b>	EDM	<b>Local Co-ordinate Reference:</b>	Well GROVES FARM S-34-33HN
<b>Company:</b>	Bayswater Exploration & Production, LLC	<b>TVD Reference:</b>	KB @ 4869.0usft (Original Well Elev)
<b>Project:</b>	DJ Basin	<b>MD Reference:</b>	KB @ 4869.0usft (Original Well Elev)
<b>Site:</b>	Groves Farm 34-L Pad	<b>North Reference:</b>	True
<b>Well:</b>	GROVES FARM S-34-33HN	<b>Survey Calculation Method:</b>	Minimum Curvature
<b>Wellbore:</b>	Wellbore #1		
<b>Design:</b>	Design #1		

Planned Survey										
Measured Depth (usft)	Inclination (°)	Azimuth (°)	Vertical Depth (usft)	+N/-S (usft)	+E/-W (usft)	Vertical Section (usft)	Dogleg Rate (°/100usft)	Build Rate (°/100usft)	Turn Rate (°/100usft)	
10,100.0	90.06	271.10	6,951.7	-1,207.1	-1,667.4	1,790.3	0.00	0.00	0.00	
10,200.0	90.06	271.10	6,951.6	-1,205.2	-1,767.4	1,889.4	0.00	0.00	0.00	
10,300.0	90.06	271.10	6,951.5	-1,203.2	-1,867.4	1,988.6	0.00	0.00	0.00	
10,400.0	90.06	271.10	6,951.4	-1,201.3	-1,967.4	2,087.8	0.00	0.00	0.00	
10,500.0	90.06	271.10	6,951.3	-1,199.4	-2,067.4	2,186.9	0.00	0.00	0.00	
10,600.0	90.06	271.10	6,951.2	-1,197.5	-2,167.4	2,286.1	0.00	0.00	0.00	
10,700.0	90.06	271.10	6,951.1	-1,195.6	-2,267.3	2,385.2	0.00	0.00	0.00	
10,800.0	90.06	271.10	6,951.0	-1,193.6	-2,367.3	2,484.4	0.00	0.00	0.00	
10,900.0	90.06	271.10	6,950.9	-1,191.7	-2,467.3	2,583.6	0.00	0.00	0.00	
11,000.0	90.06	271.10	6,950.8	-1,189.8	-2,567.3	2,682.7	0.00	0.00	0.00	
11,100.0	90.06	271.10	6,950.7	-1,187.9	-2,667.3	2,781.9	0.00	0.00	0.00	
11,200.0	90.06	271.10	6,950.6	-1,186.0	-2,767.2	2,881.0	0.00	0.00	0.00	
11,300.0	90.06	271.10	6,950.5	-1,184.0	-2,867.2	2,980.2	0.00	0.00	0.00	
11,400.0	90.06	271.10	6,950.4	-1,182.1	-2,967.2	3,079.4	0.00	0.00	0.00	
11,500.0	90.06	271.10	6,950.3	-1,180.2	-3,067.2	3,178.5	0.00	0.00	0.00	
11,600.0	90.06	271.10	6,950.2	-1,178.3	-3,167.2	3,277.7	0.00	0.00	0.00	
11,700.0	90.06	271.10	6,950.1	-1,176.4	-3,267.2	3,376.9	0.00	0.00	0.00	
11,800.0	90.06	271.10	6,950.0	-1,174.4	-3,367.1	3,476.0	0.00	0.00	0.00	
11,900.0	90.06	271.10	6,949.9	-1,172.5	-3,467.1	3,575.2	0.00	0.00	0.00	
12,000.0	90.06	271.10	6,949.8	-1,170.6	-3,567.1	3,674.3	0.00	0.00	0.00	
12,100.0	90.06	271.10	6,949.7	-1,168.7	-3,667.1	3,773.5	0.00	0.00	0.00	
12,200.0	90.06	271.10	6,949.6	-1,166.8	-3,767.1	3,872.7	0.00	0.00	0.00	
12,300.0	90.06	271.10	6,949.5	-1,164.8	-3,867.0	3,971.8	0.00	0.00	0.00	
12,400.0	90.06	271.10	6,949.4	-1,162.9	-3,967.0	4,071.0	0.00	0.00	0.00	
12,500.0	90.06	271.10	6,949.3	-1,161.0	-4,067.0	4,170.1	0.00	0.00	0.00	
12,600.0	90.06	271.10	6,949.2	-1,159.1	-4,167.0	4,269.3	0.00	0.00	0.00	
12,700.0	90.06	271.10	6,949.1	-1,157.2	-4,267.0	4,368.5	0.00	0.00	0.00	
12,800.0	90.06	271.10	6,949.0	-1,155.2	-4,367.0	4,467.6	0.00	0.00	0.00	
12,900.0	90.06	271.10	6,948.9	-1,153.3	-4,466.9	4,566.8	0.00	0.00	0.00	
13,000.0	90.06	271.10	6,948.8	-1,151.4	-4,566.9	4,666.0	0.00	0.00	0.00	
13,100.0	90.06	271.10	6,948.7	-1,149.5	-4,666.9	4,765.1	0.00	0.00	0.00	
13,200.0	90.06	271.10	6,948.6	-1,147.6	-4,766.9	4,864.3	0.00	0.00	0.00	
13,300.0	90.06	271.10	6,948.5	-1,145.6	-4,866.9	4,963.4	0.00	0.00	0.00	
13,400.0	90.06	271.10	6,948.4	-1,143.7	-4,966.8	5,062.6	0.00	0.00	0.00	
13,500.0	90.06	271.10	6,948.3	-1,141.8	-5,066.8	5,161.8	0.00	0.00	0.00	
13,600.0	90.06	271.10	6,948.3	-1,139.9	-5,166.8	5,260.9	0.00	0.00	0.00	
13,700.0	90.06	271.10	6,948.2	-1,138.0	-5,266.8	5,360.1	0.00	0.00	0.00	
13,800.0	90.06	271.10	6,948.1	-1,136.0	-5,366.8	5,459.2	0.00	0.00	0.00	
13,900.0	90.06	271.10	6,948.0	-1,134.1	-5,466.7	5,558.4	0.00	0.00	0.00	
14,000.0	90.06	271.10	6,947.9	-1,132.2	-5,566.7	5,657.6	0.00	0.00	0.00	
14,100.0	90.06	271.10	6,947.8	-1,130.3	-5,666.7	5,756.7	0.00	0.00	0.00	
14,200.0	90.06	271.10	6,947.7	-1,128.4	-5,766.7	5,855.9	0.00	0.00	0.00	
14,300.0	90.06	271.10	6,947.6	-1,126.4	-5,866.7	5,955.1	0.00	0.00	0.00	
14,400.0	90.06	271.10	6,947.5	-1,124.5	-5,966.7	6,054.2	0.00	0.00	0.00	
14,500.0	90.06	271.10	6,947.4	-1,122.6	-6,066.6	6,153.4	0.00	0.00	0.00	
14,600.0	90.06	271.10	6,947.3	-1,120.7	-6,166.6	6,252.5	0.00	0.00	0.00	
14,700.0	90.06	271.10	6,947.2	-1,118.8	-6,266.6	6,351.7	0.00	0.00	0.00	
14,800.0	90.06	271.10	6,947.1	-1,116.8	-6,366.6	6,450.9	0.00	0.00	0.00	
14,900.0	90.06	271.10	6,947.0	-1,114.9	-6,466.6	6,550.0	0.00	0.00	0.00	
15,000.0	90.06	271.10	6,946.9	-1,113.0	-6,566.5	6,649.2	0.00	0.00	0.00	
15,100.0	90.06	271.10	6,946.8	-1,111.1	-6,666.5	6,748.3	0.00	0.00	0.00	
15,200.0	90.06	271.10	6,946.7	-1,109.2	-6,766.5	6,847.5	0.00	0.00	0.00	
15,300.0	90.06	271.10	6,946.6	-1,107.2	-6,866.5	6,946.7	0.00	0.00	0.00	
15,400.0	90.06	271.10	6,946.5	-1,105.3	-6,966.5	7,045.8	0.00	0.00	0.00	



<b>Database:</b>	EDM	<b>Local Co-ordinate Reference:</b>	Well GROVES FARM S-34-33HN
<b>Company:</b>	Bayswater Exploration & Production, LLC	<b>TVD Reference:</b>	KB @ 4869.0usft (Original Well Elev)
<b>Project:</b>	DJ Basin	<b>MD Reference:</b>	KB @ 4869.0usft (Original Well Elev)
<b>Site:</b>	Groves Farm 34-L Pad	<b>North Reference:</b>	True
<b>Well:</b>	GROVES FARM S-34-33HN	<b>Survey Calculation Method:</b>	Minimum Curvature
<b>Wellbore:</b>	Wellbore #1		
<b>Design:</b>	Design #1		

Planned Survey										
Measured Depth (usft)	Inclination (°)	Azimuth (°)	Vertical Depth (usft)	+N/-S (usft)	+E/-W (usft)	Vertical Section (usft)	Dogleg Rate (°/100usft)	Build Rate (°/100usft)	Turn Rate (°/100usft)	
15,500.0	90.06	271.10	6,946.4	-1,103.4	-7,066.5	7,145.0	0.00	0.00	0.00	
15,600.0	90.06	271.10	6,946.3	-1,101.5	-7,166.4	7,244.2	0.00	0.00	0.00	
15,700.0	90.06	271.10	6,946.2	-1,099.6	-7,266.4	7,343.3	0.00	0.00	0.00	
15,800.0	90.06	271.10	6,946.1	-1,097.6	-7,366.4	7,442.5	0.00	0.00	0.00	
15,900.0	90.06	271.10	6,946.0	-1,095.7	-7,466.4	7,541.6	0.00	0.00	0.00	
16,000.0	90.06	271.10	6,945.9	-1,093.8	-7,566.4	7,640.8	0.00	0.00	0.00	
16,100.0	90.06	271.10	6,945.8	-1,091.9	-7,666.3	7,740.0	0.00	0.00	0.00	
16,200.0	90.06	271.10	6,945.7	-1,090.0	-7,766.3	7,839.1	0.00	0.00	0.00	
16,300.0	90.06	271.10	6,945.6	-1,088.0	-7,866.3	7,938.3	0.00	0.00	0.00	
16,400.0	90.06	271.10	6,945.5	-1,086.1	-7,966.3	8,037.4	0.00	0.00	0.00	
16,500.0	90.06	271.10	6,945.4	-1,084.2	-8,066.3	8,136.6	0.00	0.00	0.00	
16,600.0	90.06	271.10	6,945.3	-1,082.3	-8,166.2	8,235.8	0.00	0.00	0.00	
16,700.0	90.06	271.10	6,945.2	-1,080.4	-8,266.2	8,334.9	0.00	0.00	0.00	
16,800.0	90.06	271.10	6,945.1	-1,078.4	-8,366.2	8,434.1	0.00	0.00	0.00	
16,900.0	90.06	271.10	6,945.0	-1,076.5	-8,466.2	8,533.3	0.00	0.00	0.00	
17,000.0	90.06	271.10	6,944.9	-1,074.6	-8,566.2	8,632.4	0.00	0.00	0.00	
17,100.0	90.06	271.10	6,944.8	-1,072.7	-8,666.2	8,731.6	0.00	0.00	0.00	
17,200.0	90.06	271.10	6,944.7	-1,070.8	-8,766.1	8,830.7	0.00	0.00	0.00	
17,300.0	90.06	271.10	6,944.6	-1,068.8	-8,866.1	8,929.9	0.00	0.00	0.00	
17,400.0	90.06	271.10	6,944.5	-1,066.9	-8,966.1	9,029.1	0.00	0.00	0.00	
17,500.0	90.06	271.10	6,944.5	-1,065.0	-9,066.1	9,128.2	0.00	0.00	0.00	
17,600.0	90.06	271.10	6,944.4	-1,063.1	-9,166.1	9,227.4	0.00	0.00	0.00	
17,700.0	90.06	271.10	6,944.3	-1,061.1	-9,266.0	9,326.5	0.00	0.00	0.00	
17,800.0	90.06	271.10	6,944.2	-1,059.2	-9,366.0	9,425.7	0.00	0.00	0.00	
17,900.0	90.06	271.10	6,944.1	-1,057.3	-9,466.0	9,524.9	0.00	0.00	0.00	
17,962.9	90.06	271.10	6,944.0	-1,056.1	-9,528.9	9,587.2	0.00	0.00	0.00	
GF S-34-33HN PBHL										

Design Targets										
Target Name	Dip Angle (°)	Dip Dir. (°)	TVD (usft)	+N/-S (usft)	+E/-W (usft)	Northing (usft)	Easting (usft)	Latitude	Longitude	
- hit/miss target										
- Shape										
GF S-34-33HN PBHL	0.00	0.00	6,944.0	-1,056.1	-9,528.9	1,435,947.66	3,228,722.13	40° 31' 37.790 N	104° 40' 37.960 W	
- plan hits target center										
- Point										
GF S-34-33HN LP	0.00	0.00	6,954.0	-1,253.2	733.3	1,435,849.75	3,238,985.76	40° 31' 35.861 N	104° 38' 25.062 W	
- plan hits target center										
- Point										