



BAYSWATER

Bayswater Exploration & Production, LLC

DJ Basin

Groves Farm 34-L Pad

GROVES FARM Q-34-33HN

Wellbore #1

Plan: Design #1

Standard Planning Report

20 April, 2020



Pad Name: Groves Farm 34-L Pad
Well Name: GROVES FARM Q-34-33HN
Ground Level: 4844.0
SHL Latitude: 40° 31' 48.540 N
SHL Longitude: 104° 38' 34.548 W

SECTION DETAILS

Sec	MD	Inc	Azi	TVD	+N/-S	+E/-W	Dleg	TFace	VSect	Target
1	0.0	0.00	0.00	0.0	0.0	0.0	0.00	0.00	0.0	
2	1500.0	0.00	0.00	1500.0	0.0	0.0	0.00	0.00	0.0	
3	2675.3	23.51	122.56	2642.6	-127.9	200.4	2.00	122.56	-191.0	
4	5358.8	23.51	122.56	5103.5	-703.9	1102.5	0.00	0.00	-1050.9	
5	6534.1	0.00	270.89	6246.0	-831.8	1302.9	2.00	180.00	-1241.9	
6	6734.1	0.00	270.89	6446.0	-831.8	1302.9	0.00	0.00	-1241.9	
7	7631.3	89.72	270.89	7019.0	-823.0	732.8	10.00	0.00	-673.8	GF Q-34-33HN LP
8	17892.8	89.72	270.89	7069.0	-664.1	-9527.3	0.00	0.00	9550.4	GF Q-34-33HN PBHL

DESIGN TARGET DETAILS

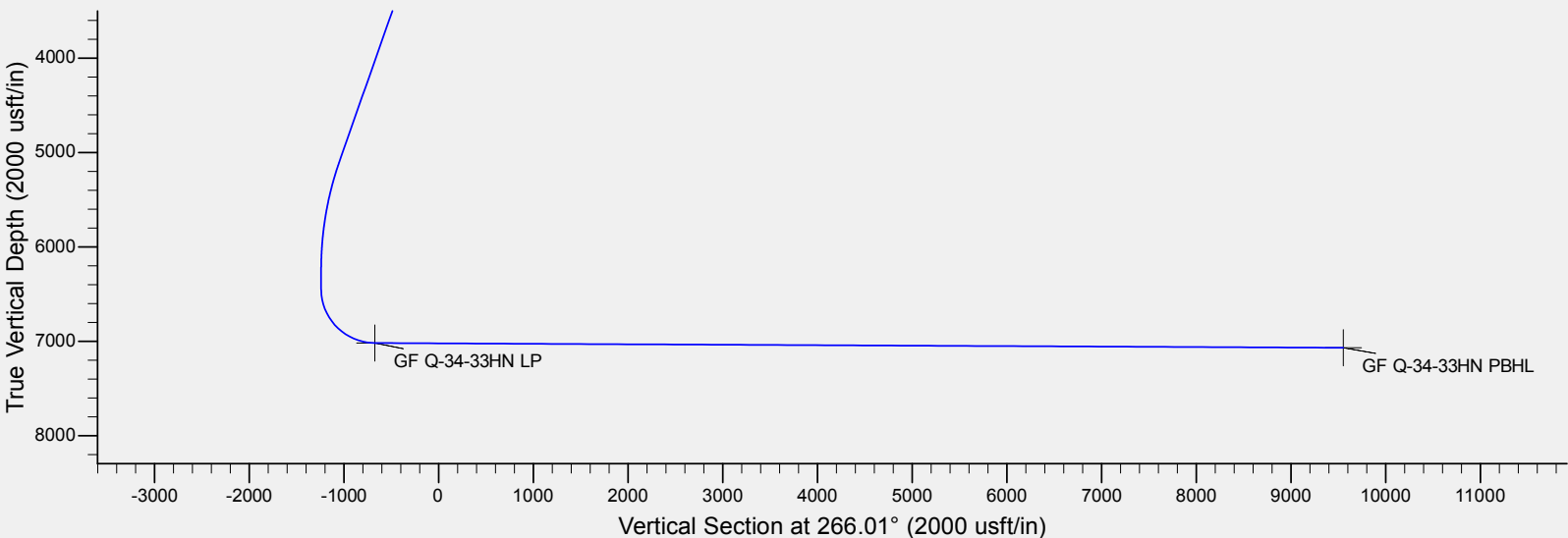
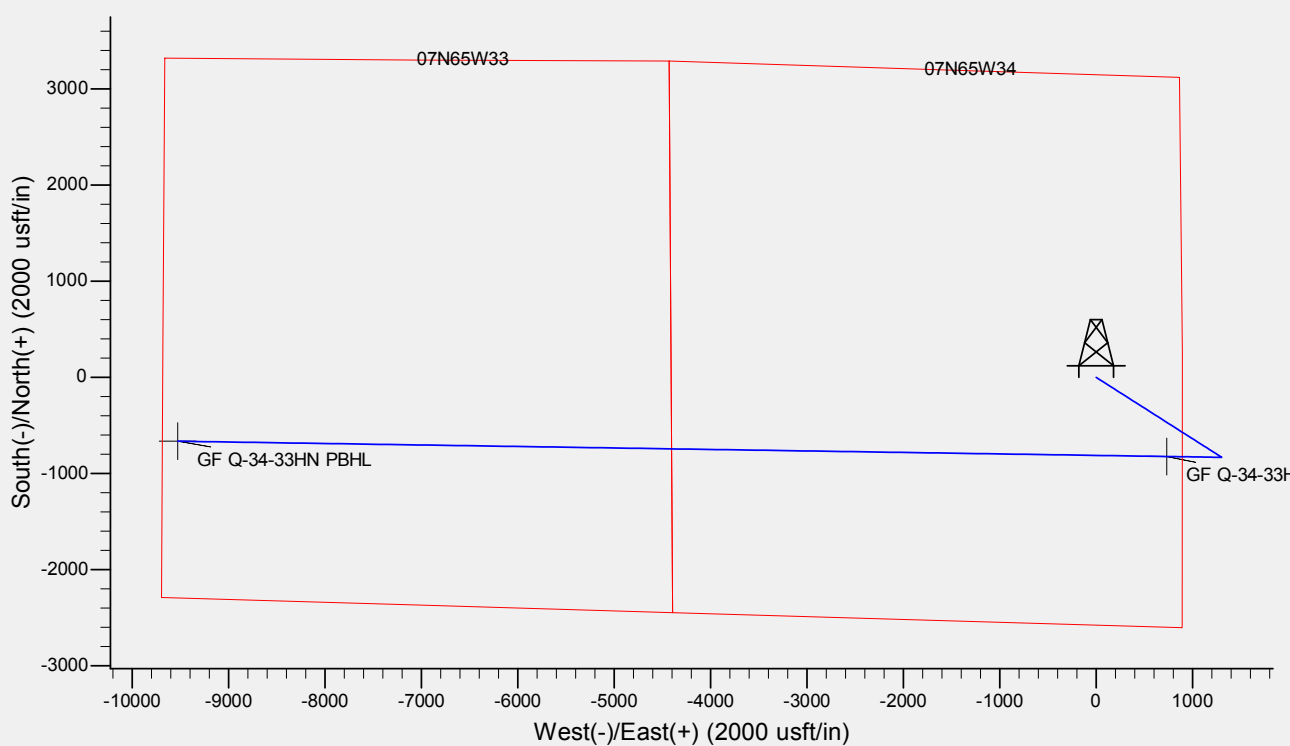
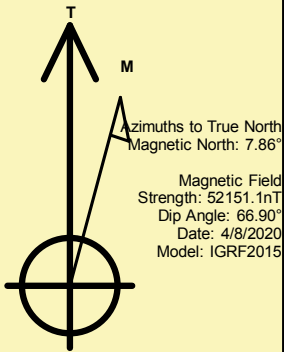
Name	TVD	+N/-S	+E/-W	Northing	Easting	Latitude	Longitude	Shape
GF Q-34-33HN LP	7019.0	-823.0	732.8	1436309.85	3238981.58	40° 31' 40.408 N	104° 38' 25.058 W	Point
GF Q-34-33HN PBHL	- plan hits target center 7069.0	-664.1	-9527.3	1436369.53	3228720.44	40° 31' 41.959 N	104° 40' 37.931 W	Point
	- plan hits target center							

REFERENCE INFORMATION

Co-ordinate (N/E) Reference: Well GROVES FARM Q-34-33HN, True North
Vertical (TVD) Reference: KB @ 4869.0usft (Original Well Elev)
Section (VS) Reference: Slot - (0.0N, 0.0E)
Measured Depth Reference: KB @ 4869.0usft (Original Well Elev)
Calculation Method: Minimum Curvature

CASING DETAILS

No casing data is available





Database:	EDM	Local Co-ordinate Reference:	Well GROVES FARM Q-34-33HN
Company:	Bayswater Exploration & Production, LLC	TVD Reference:	KB @ 4869.0usft (Original Well Elev)
Project:	DJ Basin	MD Reference:	KB @ 4869.0usft (Original Well Elev)
Site:	Groves Farm 34-L Pad	North Reference:	True
Well:	GROVES FARM Q-34-33HN	Survey Calculation Method:	Minimum Curvature
Wellbore:	Wellbore #1		
Design:	Design #1		

Project	DJ Basin, DJ Basin		
Map System:	US State Plane 1983	System Datum:	Mean Sea Level
Geo Datum:	North American Datum 1983		
Map Zone:	Colorado Northern Zone		

Site	Groves Farm 34-L Pad				
Site Position:		Northing:	1,437,185.82 usft	Latitude:	40° 31' 49.134 N
From:	Lat/Long	Easting:	3,238,241.98 usft	Longitude:	104° 38' 34.526 W
Position Uncertainty:	0.0 usft	Slot Radius:	13-3/16 "	Grid Convergence:	0.55 °

Well	GROVES FARM Q-34-33HN					
Well Position	+N/-S	-60.1 usft	Northing:	1,437,125.69 usft	Latitude:	40° 31' 48.540 N
	+E/-W	-1.7 usft	Easting:	3,238,240.89 usft	Longitude:	104° 38' 34.548 W
Position Uncertainty		0.0 usft	Wellhead Elevation:		Ground Level:	4,844.0 usft

Wellbore	Wellbore #1				
Magnetics	Model Name	Sample Date	Declination (°)	Dip Angle (°)	Field Strength (nT)
	IGRF2015	4/8/2020	7.86	66.90	52,151.13163623

Design	Design #1			
Audit Notes:				
Version:	Phase:	PLAN	Tie On Depth:	0.0
Vertical Section:	Depth From (TVD) (usft)	+N/-S (usft)	+E/-W (usft)	Direction (°)
	0.0	0.0	0.0	266.01

Plan Survey Tool Program	Date	4/20/2020		
Depth From (usft)	Depth To (usft)	Survey (Wellbore)	Tool Name	Remarks
1	0.0	17,892.8	Design #1 (Wellbore #1)	MWD
				OWSG MWD - Standard

Plan Sections										
Measured Depth (usft)	Inclination (°)	Azimuth (°)	Vertical Depth (usft)	+N/-S (usft)	+E/-W (usft)	Dogleg Rate (°/100usft)	Build Rate (°/100usft)	Turn Rate (°/100usft)	TFO (°)	Target
0.0	0.00	0.00	0.0	0.0	0.0	0.00	0.00	0.00	0.00	
1,500.0	0.00	0.00	1,500.0	0.0	0.0	0.00	0.00	0.00	0.00	
2,675.3	23.51	122.56	2,642.6	-127.9	200.4	2.00	2.00	0.00	122.56	
5,358.8	23.51	122.56	5,103.5	-703.9	1,102.5	0.00	0.00	0.00	0.00	
6,534.1	0.00	270.89	6,246.0	-831.8	1,302.9	2.00	-2.00	0.00	180.00	
6,734.1	0.00	270.89	6,446.0	-831.8	1,302.9	0.00	0.00	0.00	0.00	
7,631.3	89.72	270.89	7,019.0	-823.0	732.8	10.00	10.00	0.00	0.00	GF Q-34-33HN LP
17,892.8	89.72	270.89	7,069.0	-664.1	-9,527.3	0.00	0.00	0.00	0.00	GF Q-34-33HN PBHL



Database:	EDM	Local Co-ordinate Reference:	Well GROVES FARM Q-34-33HN
Company:	Bayswater Exploration & Production, LLC	TVD Reference:	KB @ 4869.0usft (Original Well Elev)
Project:	DJ Basin	MD Reference:	KB @ 4869.0usft (Original Well Elev)
Site:	Groves Farm 34-L Pad	North Reference:	True
Well:	GROVES FARM Q-34-33HN	Survey Calculation Method:	Minimum Curvature
Wellbore:	Wellbore #1		
Design:	Design #1		

Planned Survey									
Measured Depth (usft)	Inclination (°)	Azimuth (°)	Vertical Depth (usft)	+N/-S (usft)	+E/-W (usft)	Vertical Section (usft)	Dogleg Rate (°/100usft)	Build Rate (°/100usft)	Turn Rate (°/100usft)
0.0	0.00	0.00	0.0	0.0	0.0	0.0	0.00	0.00	0.00
100.0	0.00	0.00	100.0	0.0	0.0	0.0	0.00	0.00	0.00
200.0	0.00	0.00	200.0	0.0	0.0	0.0	0.00	0.00	0.00
300.0	0.00	0.00	300.0	0.0	0.0	0.0	0.00	0.00	0.00
400.0	0.00	0.00	400.0	0.0	0.0	0.0	0.00	0.00	0.00
500.0	0.00	0.00	500.0	0.0	0.0	0.0	0.00	0.00	0.00
600.0	0.00	0.00	600.0	0.0	0.0	0.0	0.00	0.00	0.00
700.0	0.00	0.00	700.0	0.0	0.0	0.0	0.00	0.00	0.00
800.0	0.00	0.00	800.0	0.0	0.0	0.0	0.00	0.00	0.00
900.0	0.00	0.00	900.0	0.0	0.0	0.0	0.00	0.00	0.00
1,000.0	0.00	0.00	1,000.0	0.0	0.0	0.0	0.00	0.00	0.00
1,100.0	0.00	0.00	1,100.0	0.0	0.0	0.0	0.00	0.00	0.00
1,200.0	0.00	0.00	1,200.0	0.0	0.0	0.0	0.00	0.00	0.00
1,300.0	0.00	0.00	1,300.0	0.0	0.0	0.0	0.00	0.00	0.00
1,400.0	0.00	0.00	1,400.0	0.0	0.0	0.0	0.00	0.00	0.00
1,500.0	0.00	0.00	1,500.0	0.0	0.0	0.0	0.00	0.00	0.00
1,600.0	2.00	122.56	1,600.0	-0.9	1.5	-1.4	2.00	2.00	0.00
1,700.0	4.00	122.56	1,699.8	-3.8	5.9	-5.6	2.00	2.00	0.00
1,800.0	6.00	122.56	1,799.5	-8.4	13.2	-12.6	2.00	2.00	0.00
1,900.0	8.00	122.56	1,898.7	-15.0	23.5	-22.4	2.00	2.00	0.00
2,000.0	10.00	122.56	1,997.5	-23.4	36.7	-35.0	2.00	2.00	0.00
2,100.0	12.00	122.56	2,095.6	-33.7	52.8	-50.3	2.00	2.00	0.00
2,200.0	14.00	122.56	2,193.1	-45.8	71.7	-68.4	2.00	2.00	0.00
2,300.0	16.00	122.56	2,289.6	-59.7	93.5	-89.2	2.00	2.00	0.00
2,400.0	18.00	122.56	2,385.3	-75.4	118.2	-112.6	2.00	2.00	0.00
2,500.0	20.00	122.56	2,479.8	-93.0	145.6	-138.8	2.00	2.00	0.00
2,600.0	22.00	122.56	2,573.2	-112.3	175.8	-167.6	2.00	2.00	0.00
2,675.3	23.51	122.56	2,642.6	-127.9	200.4	-191.0	2.00	2.00	0.00
2,700.0	23.51	122.56	2,665.3	-133.2	208.7	-198.9	0.00	0.00	0.00
2,800.0	23.51	122.56	2,757.0	-154.7	242.3	-231.0	0.00	0.00	0.00
2,900.0	23.51	122.56	2,848.7	-176.1	275.9	-263.0	0.00	0.00	0.00
3,000.0	23.51	122.56	2,940.4	-197.6	309.5	-295.0	0.00	0.00	0.00
3,100.0	23.51	122.56	3,032.1	-219.1	343.1	-327.1	0.00	0.00	0.00
3,200.0	23.51	122.56	3,123.8	-240.5	376.8	-359.1	0.00	0.00	0.00
3,300.0	23.51	122.56	3,215.5	-262.0	410.4	-391.2	0.00	0.00	0.00
3,400.0	23.51	122.56	3,307.2	-283.5	444.0	-423.2	0.00	0.00	0.00
3,500.0	23.51	122.56	3,398.9	-304.9	477.6	-455.3	0.00	0.00	0.00
3,600.0	23.51	122.56	3,490.6	-326.4	511.2	-487.3	0.00	0.00	0.00
3,700.0	23.51	122.56	3,582.3	-347.8	544.8	-519.3	0.00	0.00	0.00
3,800.0	23.51	122.56	3,674.0	-369.3	578.5	-551.4	0.00	0.00	0.00
3,900.0	23.51	122.56	3,765.7	-390.8	612.1	-583.4	0.00	0.00	0.00
4,000.0	23.51	122.56	3,857.4	-412.2	645.7	-615.5	0.00	0.00	0.00
4,100.0	23.51	122.56	3,949.1	-433.7	679.3	-647.5	0.00	0.00	0.00
4,200.0	23.51	122.56	4,040.8	-455.2	712.9	-679.6	0.00	0.00	0.00
4,300.0	23.51	122.56	4,132.5	-476.6	746.6	-711.6	0.00	0.00	0.00
4,400.0	23.51	122.56	4,224.2	-498.1	780.2	-743.6	0.00	0.00	0.00
4,500.0	23.51	122.56	4,315.9	-519.5	813.8	-775.7	0.00	0.00	0.00
4,600.0	23.51	122.56	4,407.6	-541.0	847.4	-807.7	0.00	0.00	0.00
4,700.0	23.51	122.56	4,499.3	-562.5	881.0	-839.8	0.00	0.00	0.00
4,800.0	23.51	122.56	4,591.0	-583.9	914.6	-871.8	0.00	0.00	0.00
4,900.0	23.51	122.56	4,682.7	-605.4	948.3	-903.9	0.00	0.00	0.00
5,000.0	23.51	122.56	4,774.4	-626.8	981.9	-935.9	0.00	0.00	0.00
5,100.0	23.51	122.56	4,866.1	-648.3	1,015.5	-967.9	0.00	0.00	0.00
5,200.0	23.51	122.56	4,957.8	-669.8	1,049.1	-1,000.0	0.00	0.00	0.00



Database:	EDM	Local Co-ordinate Reference:	Well GROVES FARM Q-34-33HN
Company:	Bayswater Exploration & Production, LLC	TVD Reference:	KB @ 4869.0usft (Original Well Elev)
Project:	DJ Basin	MD Reference:	KB @ 4869.0usft (Original Well Elev)
Site:	Groves Farm 34-L Pad	North Reference:	True
Well:	GROVES FARM Q-34-33HN	Survey Calculation Method:	Minimum Curvature
Wellbore:	Wellbore #1		
Design:	Design #1		

Planned Survey									
Measured Depth (usft)	Inclination (°)	Azimuth (°)	Vertical Depth (usft)	+N/-S (usft)	+E/-W (usft)	Vertical Section (usft)	Dogleg Rate (°/100usft)	Build Rate (°/100usft)	Turn Rate (°/100usft)
5,300.0	23.51	122.56	5,049.5	-691.2	1,082.7	-1,032.0	0.00	0.00	0.00
5,358.8	23.51	122.56	5,103.5	-703.9	1,102.5	-1,050.9	0.00	0.00	0.00
5,400.0	22.68	122.56	5,141.3	-712.6	1,116.1	-1,063.9	2.00	-2.00	0.00
5,500.0	20.68	122.56	5,234.2	-732.4	1,147.3	-1,093.5	2.00	-2.00	0.00
5,600.0	18.68	122.56	5,328.4	-750.6	1,175.6	-1,120.6	2.00	-2.00	0.00
5,700.0	16.68	122.56	5,423.7	-766.9	1,201.2	-1,145.0	2.00	-2.00	0.00
5,800.0	14.68	122.56	5,519.9	-781.4	1,224.0	-1,166.7	2.00	-2.00	0.00
5,900.0	12.68	122.56	5,617.1	-794.2	1,244.0	-1,185.7	2.00	-2.00	0.00
6,000.0	10.68	122.56	5,715.0	-805.1	1,261.0	-1,202.0	2.00	-2.00	0.00
6,100.0	8.68	122.56	5,813.6	-814.1	1,275.2	-1,215.5	2.00	-2.00	0.00
6,200.0	6.68	122.56	5,912.7	-821.3	1,286.5	-1,226.2	2.00	-2.00	0.00
6,300.0	4.68	122.56	6,012.2	-826.6	1,294.8	-1,234.2	2.00	-2.00	0.00
6,400.0	2.68	122.56	6,112.0	-830.1	1,300.2	-1,239.4	2.00	-2.00	0.00
6,500.0	0.68	122.56	6,211.9	-831.7	1,302.7	-1,241.7	2.00	-2.00	0.00
6,534.1	0.00	270.89	6,246.0	-831.8	1,302.9	-1,241.9	2.00	-2.00	0.00
6,600.0	0.00	0.00	6,311.9	-831.8	1,302.9	-1,241.9	0.00	0.00	0.00
6,700.0	0.00	0.00	6,411.9	-831.8	1,302.9	-1,241.9	0.00	0.00	0.00
6,734.1	0.00	270.89	6,446.0	-831.8	1,302.9	-1,241.9	0.00	0.00	0.00
6,800.0	6.59	270.89	6,511.8	-831.7	1,299.1	-1,238.1	10.00	10.00	0.00
6,900.0	16.59	270.89	6,609.6	-831.4	1,279.0	-1,218.1	10.00	10.00	0.00
7,000.0	26.59	270.89	6,702.5	-830.8	1,242.3	-1,181.5	10.00	10.00	0.00
7,100.0	36.59	270.89	6,787.6	-830.0	1,190.0	-1,129.4	10.00	10.00	0.00
7,200.0	46.59	270.89	6,862.3	-829.0	1,123.7	-1,063.3	10.00	10.00	0.00
7,300.0	56.59	270.89	6,924.3	-827.8	1,045.4	-985.3	10.00	10.00	0.00
7,400.0	66.59	270.89	6,971.8	-826.4	957.6	-897.8	10.00	10.00	0.00
7,500.0	76.59	270.89	7,003.4	-825.0	862.9	-803.4	10.00	10.00	0.00
7,600.0	86.59	270.89	7,018.0	-823.4	764.1	-705.0	10.00	10.00	0.00
7,631.3	89.72	270.89	7,019.0	-823.0	732.8	-673.8	10.00	10.00	0.00
GF Q-34-33HN LP									
7,700.0	89.72	270.89	7,019.3	-821.9	664.1	-605.3	0.00	0.00	0.00
7,800.0	89.72	270.89	7,019.8	-820.3	564.1	-505.7	0.00	0.00	0.00
7,900.0	89.72	270.89	7,020.3	-818.8	464.1	-406.1	0.00	0.00	0.00
8,000.0	89.72	270.89	7,020.8	-817.2	364.1	-306.4	0.00	0.00	0.00
8,100.0	89.72	270.89	7,021.3	-815.7	264.1	-206.8	0.00	0.00	0.00
8,200.0	89.72	270.89	7,021.8	-814.1	164.2	-107.2	0.00	0.00	0.00
8,300.0	89.72	270.89	7,022.3	-812.6	64.2	-7.5	0.00	0.00	0.00
8,400.0	89.72	270.89	7,022.7	-811.1	-35.8	92.1	0.00	0.00	0.00
8,500.0	89.72	270.89	7,023.2	-809.5	-135.8	191.8	0.00	0.00	0.00
8,600.0	89.72	270.89	7,023.7	-808.0	-235.8	291.4	0.00	0.00	0.00
8,700.0	89.72	270.89	7,024.2	-806.4	-335.8	391.0	0.00	0.00	0.00
8,800.0	89.72	270.89	7,024.7	-804.9	-435.8	490.7	0.00	0.00	0.00
8,900.0	89.72	270.89	7,025.2	-803.3	-535.7	590.3	0.00	0.00	0.00
9,000.0	89.72	270.89	7,025.7	-801.8	-635.7	689.9	0.00	0.00	0.00
9,100.0	89.72	270.89	7,026.2	-800.2	-735.7	789.6	0.00	0.00	0.00
9,200.0	89.72	270.89	7,026.6	-798.7	-835.7	889.2	0.00	0.00	0.00
9,300.0	89.72	270.89	7,027.1	-797.1	-935.7	988.9	0.00	0.00	0.00
9,400.0	89.72	270.89	7,027.6	-795.6	-1,035.7	1,088.5	0.00	0.00	0.00
9,500.0	89.72	270.89	7,028.1	-794.0	-1,135.7	1,188.1	0.00	0.00	0.00
9,600.0	89.72	270.89	7,028.6	-792.5	-1,235.7	1,287.8	0.00	0.00	0.00
9,700.0	89.72	270.89	7,029.1	-790.9	-1,335.6	1,387.4	0.00	0.00	0.00
9,800.0	89.72	270.89	7,029.6	-789.4	-1,435.6	1,487.0	0.00	0.00	0.00
9,900.0	89.72	270.89	7,030.1	-787.8	-1,535.6	1,586.7	0.00	0.00	0.00
10,000.0	89.72	270.89	7,030.5	-786.3	-1,635.6	1,686.3	0.00	0.00	0.00



Database:	EDM	Local Co-ordinate Reference:	Well GROVES FARM Q-34-33HN
Company:	Bayswater Exploration & Production, LLC	TVD Reference:	KB @ 4869.0usft (Original Well Elev)
Project:	DJ Basin	MD Reference:	KB @ 4869.0usft (Original Well Elev)
Site:	Groves Farm 34-L Pad	North Reference:	True
Well:	GROVES FARM Q-34-33HN	Survey Calculation Method:	Minimum Curvature
Wellbore:	Wellbore #1		
Design:	Design #1		

Planned Survey										
Measured Depth (usft)	Inclination (°)	Azimuth (°)	Vertical Depth (usft)	+N/-S (usft)	+E/-W (usft)	Vertical Section (usft)	Dogleg Rate (°/100usft)	Build Rate (°/100usft)	Turn Rate (°/100usft)	
10,100.0	89.72	270.89	7,031.0	-784.7	-1,735.6	1,786.0	0.00	0.00	0.00	
10,200.0	89.72	270.89	7,031.5	-783.2	-1,835.6	1,885.6	0.00	0.00	0.00	
10,300.0	89.72	270.89	7,032.0	-781.6	-1,935.6	1,985.2	0.00	0.00	0.00	
10,400.0	89.72	270.89	7,032.5	-780.1	-2,035.5	2,084.9	0.00	0.00	0.00	
10,500.0	89.72	270.89	7,033.0	-778.5	-2,135.5	2,184.5	0.00	0.00	0.00	
10,600.0	89.72	270.89	7,033.5	-777.0	-2,235.5	2,284.1	0.00	0.00	0.00	
10,700.0	89.72	270.89	7,034.0	-775.4	-2,335.5	2,383.8	0.00	0.00	0.00	
10,800.0	89.72	270.89	7,034.4	-773.9	-2,435.5	2,483.4	0.00	0.00	0.00	
10,900.0	89.72	270.89	7,034.9	-772.4	-2,535.5	2,583.1	0.00	0.00	0.00	
11,000.0	89.72	270.89	7,035.4	-770.8	-2,635.5	2,682.7	0.00	0.00	0.00	
11,100.0	89.72	270.89	7,035.9	-769.3	-2,735.5	2,782.3	0.00	0.00	0.00	
11,200.0	89.72	270.89	7,036.4	-767.7	-2,835.4	2,882.0	0.00	0.00	0.00	
11,300.0	89.72	270.89	7,036.9	-766.2	-2,935.4	2,981.6	0.00	0.00	0.00	
11,400.0	89.72	270.89	7,037.4	-764.6	-3,035.4	3,081.2	0.00	0.00	0.00	
11,500.0	89.72	270.89	7,037.9	-763.1	-3,135.4	3,180.9	0.00	0.00	0.00	
11,600.0	89.72	270.89	7,038.3	-761.5	-3,235.4	3,280.5	0.00	0.00	0.00	
11,700.0	89.72	270.89	7,038.8	-760.0	-3,335.4	3,380.1	0.00	0.00	0.00	
11,800.0	89.72	270.89	7,039.3	-758.4	-3,435.4	3,479.8	0.00	0.00	0.00	
11,900.0	89.72	270.89	7,039.8	-756.9	-3,535.4	3,579.4	0.00	0.00	0.00	
12,000.0	89.72	270.89	7,040.3	-755.3	-3,635.3	3,679.1	0.00	0.00	0.00	
12,100.0	89.72	270.89	7,040.8	-753.8	-3,735.3	3,778.7	0.00	0.00	0.00	
12,200.0	89.72	270.89	7,041.3	-752.2	-3,835.3	3,878.3	0.00	0.00	0.00	
12,300.0	89.72	270.89	7,041.7	-750.7	-3,935.3	3,978.0	0.00	0.00	0.00	
12,400.0	89.72	270.89	7,042.2	-749.1	-4,035.3	4,077.6	0.00	0.00	0.00	
12,500.0	89.72	270.89	7,042.7	-747.6	-4,135.3	4,177.2	0.00	0.00	0.00	
12,600.0	89.72	270.89	7,043.2	-746.0	-4,235.3	4,276.9	0.00	0.00	0.00	
12,700.0	89.72	270.89	7,043.7	-744.5	-4,335.2	4,376.5	0.00	0.00	0.00	
12,800.0	89.72	270.89	7,044.2	-742.9	-4,435.2	4,476.2	0.00	0.00	0.00	
12,900.0	89.72	270.89	7,044.7	-741.4	-4,535.2	4,575.8	0.00	0.00	0.00	
13,000.0	89.72	270.89	7,045.2	-739.8	-4,635.2	4,675.4	0.00	0.00	0.00	
13,100.0	89.72	270.89	7,045.6	-738.3	-4,735.2	4,775.1	0.00	0.00	0.00	
13,200.0	89.72	270.89	7,046.1	-736.7	-4,835.2	4,874.7	0.00	0.00	0.00	
13,300.0	89.72	270.89	7,046.6	-735.2	-4,935.2	4,974.3	0.00	0.00	0.00	
13,400.0	89.72	270.89	7,047.1	-733.7	-5,035.2	5,074.0	0.00	0.00	0.00	
13,500.0	89.72	270.89	7,047.6	-732.1	-5,135.1	5,173.6	0.00	0.00	0.00	
13,600.0	89.72	270.89	7,048.1	-730.6	-5,235.1	5,273.3	0.00	0.00	0.00	
13,700.0	89.72	270.89	7,048.6	-729.0	-5,335.1	5,372.9	0.00	0.00	0.00	
13,800.0	89.72	270.89	7,049.1	-727.5	-5,435.1	5,472.5	0.00	0.00	0.00	
13,900.0	89.72	270.89	7,049.5	-725.9	-5,535.1	5,572.2	0.00	0.00	0.00	
14,000.0	89.72	270.89	7,050.0	-724.4	-5,635.1	5,671.8	0.00	0.00	0.00	
14,100.0	89.72	270.89	7,050.5	-722.8	-5,735.1	5,771.4	0.00	0.00	0.00	
14,200.0	89.72	270.89	7,051.0	-721.3	-5,835.0	5,871.1	0.00	0.00	0.00	
14,300.0	89.72	270.89	7,051.5	-719.7	-5,935.0	5,970.7	0.00	0.00	0.00	
14,400.0	89.72	270.89	7,052.0	-718.2	-6,035.0	6,070.4	0.00	0.00	0.00	
14,500.0	89.72	270.89	7,052.5	-716.6	-6,135.0	6,170.0	0.00	0.00	0.00	
14,600.0	89.72	270.89	7,053.0	-715.1	-6,235.0	6,269.6	0.00	0.00	0.00	
14,700.0	89.72	270.89	7,053.4	-713.5	-6,335.0	6,369.3	0.00	0.00	0.00	
14,800.0	89.72	270.89	7,053.9	-712.0	-6,435.0	6,468.9	0.00	0.00	0.00	
14,900.0	89.72	270.89	7,054.4	-710.4	-6,535.0	6,568.5	0.00	0.00	0.00	
15,000.0	89.72	270.89	7,054.9	-708.9	-6,634.9	6,668.2	0.00	0.00	0.00	
15,100.0	89.72	270.89	7,055.4	-707.3	-6,734.9	6,767.8	0.00	0.00	0.00	
15,200.0	89.72	270.89	7,055.9	-705.8	-6,834.9	6,867.4	0.00	0.00	0.00	
15,300.0	89.72	270.89	7,056.4	-704.2	-6,934.9	6,967.1	0.00	0.00	0.00	
15,400.0	89.72	270.89	7,056.9	-702.7	-7,034.9	7,066.7	0.00	0.00	0.00	



Database:	EDM	Local Co-ordinate Reference:	Well GROVES FARM Q-34-33HN
Company:	Bayswater Exploration & Production, LLC	TVD Reference:	KB @ 4869.0usft (Original Well Elev)
Project:	DJ Basin	MD Reference:	KB @ 4869.0usft (Original Well Elev)
Site:	Groves Farm 34-L Pad	North Reference:	True
Well:	GROVES FARM Q-34-33HN	Survey Calculation Method:	Minimum Curvature
Wellbore:	Wellbore #1		
Design:	Design #1		

Planned Survey										
Measured Depth (usft)	Inclination (°)	Azimuth (°)	Vertical Depth (usft)	+N/-S (usft)	+E/-W (usft)	Vertical Section (usft)	Dogleg Rate (°/100usft)	Build Rate (°/100usft)	Turn Rate (°/100usft)	
15,500.0	89.72	270.89	7,057.3	-701.1	-7,134.9	7,166.4	0.00	0.00	0.00	
15,600.0	89.72	270.89	7,057.8	-699.6	-7,234.9	7,266.0	0.00	0.00	0.00	
15,700.0	89.72	270.89	7,058.3	-698.0	-7,334.8	7,365.6	0.00	0.00	0.00	
15,800.0	89.72	270.89	7,058.8	-696.5	-7,434.8	7,465.3	0.00	0.00	0.00	
15,900.0	89.72	270.89	7,059.3	-695.0	-7,534.8	7,564.9	0.00	0.00	0.00	
16,000.0	89.72	270.89	7,059.8	-693.4	-7,634.8	7,664.5	0.00	0.00	0.00	
16,100.0	89.72	270.89	7,060.3	-691.9	-7,734.8	7,764.2	0.00	0.00	0.00	
16,200.0	89.72	270.89	7,060.8	-690.3	-7,834.8	7,863.8	0.00	0.00	0.00	
16,300.0	89.72	270.89	7,061.2	-688.8	-7,934.8	7,963.5	0.00	0.00	0.00	
16,400.0	89.72	270.89	7,061.7	-687.2	-8,034.8	8,063.1	0.00	0.00	0.00	
16,500.0	89.72	270.89	7,062.2	-685.7	-8,134.7	8,162.7	0.00	0.00	0.00	
16,600.0	89.72	270.89	7,062.7	-684.1	-8,234.7	8,262.4	0.00	0.00	0.00	
16,700.0	89.72	270.89	7,063.2	-682.6	-8,334.7	8,362.0	0.00	0.00	0.00	
16,800.0	89.72	270.89	7,063.7	-681.0	-8,434.7	8,461.6	0.00	0.00	0.00	
16,900.0	89.72	270.89	7,064.2	-679.5	-8,534.7	8,561.3	0.00	0.00	0.00	
17,000.0	89.72	270.89	7,064.6	-677.9	-8,634.7	8,660.9	0.00	0.00	0.00	
17,100.0	89.72	270.89	7,065.1	-676.4	-8,734.7	8,760.6	0.00	0.00	0.00	
17,200.0	89.72	270.89	7,065.6	-674.8	-8,834.7	8,860.2	0.00	0.00	0.00	
17,300.0	89.72	270.89	7,066.1	-673.3	-8,934.6	8,959.8	0.00	0.00	0.00	
17,400.0	89.72	270.89	7,066.6	-671.7	-9,034.6	9,059.5	0.00	0.00	0.00	
17,500.0	89.72	270.89	7,067.1	-670.2	-9,134.6	9,159.1	0.00	0.00	0.00	
17,600.0	89.72	270.89	7,067.6	-668.6	-9,234.6	9,258.7	0.00	0.00	0.00	
17,700.0	89.72	270.89	7,068.1	-667.1	-9,334.6	9,358.4	0.00	0.00	0.00	
17,800.0	89.72	270.89	7,068.5	-665.5	-9,434.6	9,458.0	0.00	0.00	0.00	
17,892.8	89.72	270.89	7,069.0	-664.1	-9,527.3	9,550.4	0.00	0.00	0.00	
GF Q-34-33HN PBHL										

Design Targets										
Target Name	Dip Angle (°)	Dip Dir. (°)	TVD (usft)	+N/-S (usft)	+E/-W (usft)	Northing (usft)	Easting (usft)	Latitude	Longitude	
GF Q-34-33HN LP	0.00	0.00	7,019.0	-823.0	732.8	1,436,309.85	3,238,981.58	40° 31' 40.408 N	104° 38' 25.058 W	
- hit/miss target										
- Shape										
- Point										
GF Q-34-33HN PBHL	0.00	0.00	7,069.0	-664.1	-9,527.3	1,436,369.53	3,228,720.44	40° 31' 41.959 N	104° 40' 37.931 W	
- plan hits target center										
- Point										