



BAYSWATER

Bayswater Exploration & Production, LLC

DJ Basin

Groves Farm 34-L Pad

GROVES FARM O-34-33HN

Wellbore #1

Plan: Design #1

Standard Planning Report

20 April, 2020



Pad Name: Groves Farm 34-L Pad
Well Name: GROVES FARM O-34-33HN
Ground Level: 4844.0
SHL Latitude: 40° 31' 48.839 N
SHL Longitude: 104° 38' 34.537 W

SECTION DETAILS

Sec	MD	Inc	Azi	TVD	+N/-S	+E/-W	Dleg	TFace	VSect	Target
1	0.0	0.00	0.00	0.0	0.0	0.0	0.00	0.00	0.0	
2	1500.0	0.00	0.00	1500.0	0.0	0.0	0.00	0.00	0.0	
3	2523.9	20.48	106.03	2502.3	-50.0	174.0	2.00	106.03	-172.6	
4	5370.3	20.48	106.03	5168.8	-325.0	1131.1	0.00	0.00	-1122.3	
5	6394.2	0.00	270.67	6171.0	-375.0	1305.1	2.00	180.00	-1294.9	
6	6594.2	0.00	270.67	6371.0	-375.0	1305.1	0.00	0.00	-1294.9	
7	7494.2	90.00	270.67	6944.0	-368.3	732.2	10.00	0.00	-722.3	GF O-34-33HN LP
8	17752.9	90.00	270.67	6944.1	-248.4	-9525.8	0.00	0.00	9529.0	GF O-34-33HN PBHL

DESIGN TARGET DETAILS

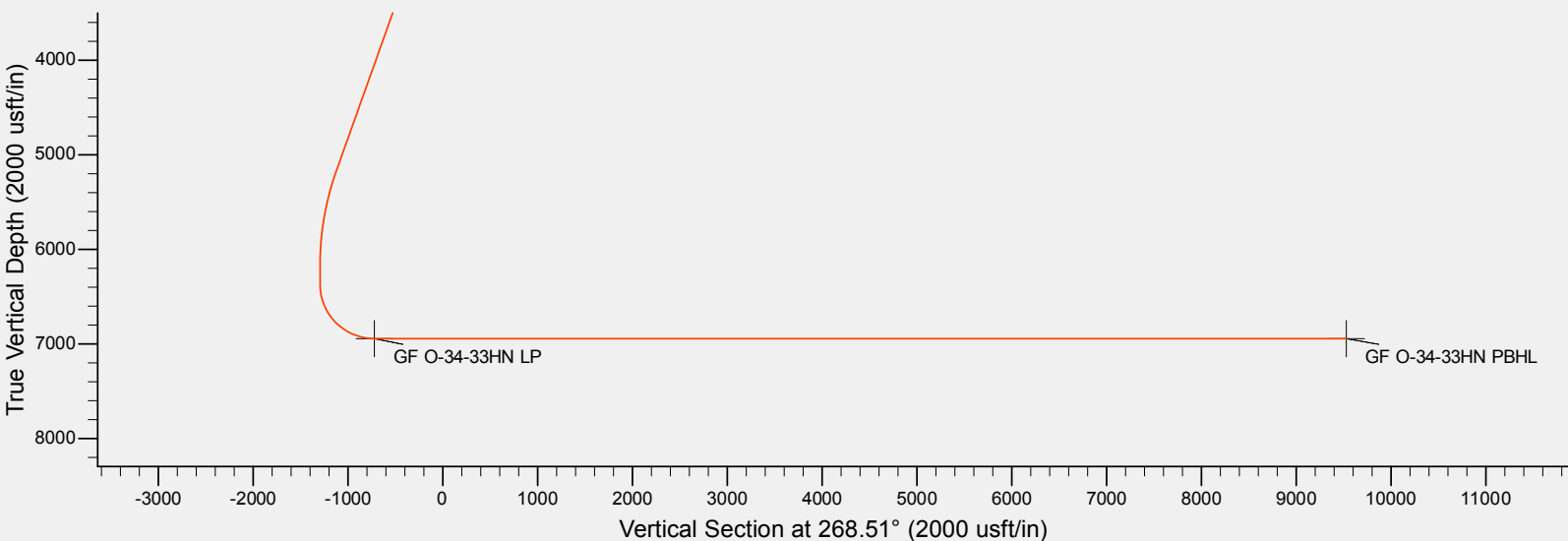
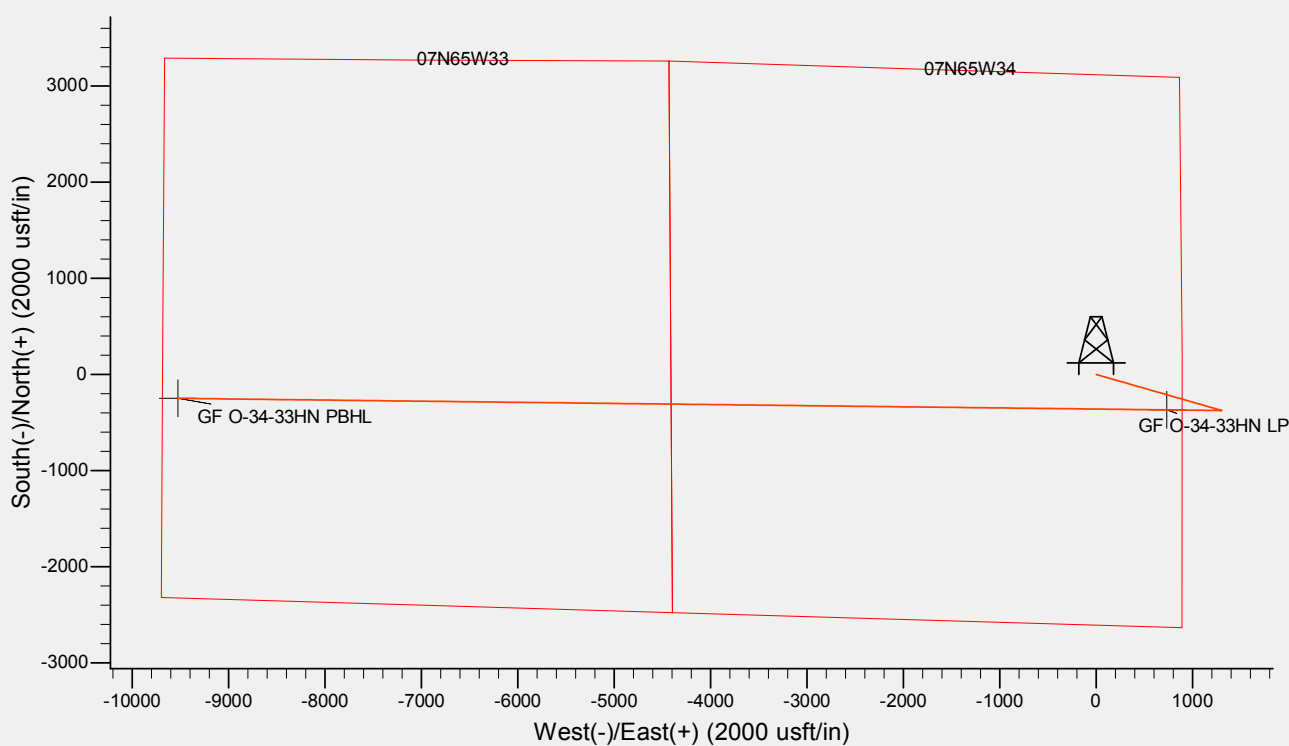
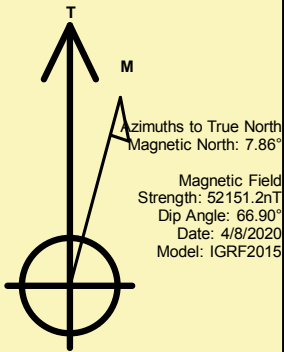
Name	TVD	+N/-S	+E/-W	Northing	Easting	Latitude	Longitude	Shape
GF O-34-33HN LP	6944.0	-368.3	732.2	1436794.73	3238977.16	40° 31' 45.199 N	104° 38' 25.055 W	Point
GF O-34-33HN PBHL	- plan hits target center 6944.1	-248.4	-9525.8	1436815.44	3228718.52	40° 31' 46.366 N	104° 40' 37.902 W	Point
	- plan hits target center							

REFERENCE INFORMATION

Co-ordinate (N/E) Reference: Well GROVES FARM O-34-33HN, True North
Vertical (TVD) Reference: KB @ 4869.0usft (Original Well Elev)
Section (VS) Reference: Slot - (0.0N, 0.0E)
Measured Depth Reference: KB @ 4869.0usft (Original Well Elev)
Calculation Method: Minimum Curvature

CASING DETAILS

No casing data is available





Database:	EDM	Local Co-ordinate Reference:	Well GROVES FARM O-34-33HN
Company:	Bayswater Exploration & Production, LLC	TVD Reference:	KB @ 4869.0usft (Original Well Elev)
Project:	DJ Basin	MD Reference:	KB @ 4869.0usft (Original Well Elev)
Site:	Groves Farm 34-L Pad	North Reference:	True
Well:	GROVES FARM O-34-33HN	Survey Calculation Method:	Minimum Curvature
Wellbore:	Wellbore #1		
Design:	Design #1		

Project	DJ Basin, DJ Basin		
Map System:	US State Plane 1983	System Datum:	Mean Sea Level
Geo Datum:	North American Datum 1983		
Map Zone:	Colorado Northern Zone		

Site		Groves Farm 34-L Pad			
Site Position:		Northing:	1,437,185.82 usft	Latitude:	40° 31' 49.134 N
From:	Lat/Long	Easting:	3,238,241.98 usft	Longitude:	104° 38' 34.526 W
Position Uncertainty:	0.0 usft	Slot Radius:	13-3/16 "	Grid Convergence:	0.55 °

Well	GROVES FARM O-34-33HN					
Well Position	+N/-S	-29.9 usft	Northing:	1,437,155.93 usft	Latitude:	40° 31' 48.839 N
	+E/-W	-0.8 usft	Easting:	3,238,241.44 usft	Longitude:	104° 38' 34.537 W
Position Uncertainty	0.0 usft		Wellhead Elevation:		Ground Level:	4,844.0 usft

Wellbore	Wellbore #1				
Magnetics	Model Name	Sample Date	Declination (°)	Dip Angle (°)	Field Strength (nT)
	IGRF2015	4/8/2020	7.86	66.90	52,151.17458939

Design	Design #1			
Audit Notes:				
Version:	Phase:	PLAN	Tie On Depth:	0.0
Vertical Section:	Depth From (TVD) (usft)	+N/-S (usft)	+E/-W (usft)	Direction (°)
	0.0	0.0	0.0	268.51

Plan Survey Tool Program	Date	4/20/2020		
Depth From (usft)	Depth To (usft)	Survey (Wellbore)	Tool Name	Remarks
1	0.0	17,752.9	Design #1 (Wellbore #1)	MWD
				OWSG MWD - Standard

Plan Sections										
Measured Depth (usft)	Inclination (°)	Azimuth (°)	Vertical Depth (usft)	+N/-S (usft)	+E/-W (usft)	Dogleg Rate (°/100usft)	Build Rate (°/100usft)	Turn Rate (°/100usft)	TFO (°)	Target
0.0	0.00	0.00	0.0	0.0	0.0	0.00	0.00	0.00	0.00	
1,500.0	0.00	0.00	1,500.0	0.0	0.0	0.00	0.00	0.00	0.00	
2,523.9	20.48	106.03	2,502.3	-50.0	174.0	2.00	2.00	0.00	106.03	
5,370.3	20.48	106.03	5,168.8	-325.0	1,131.1	0.00	0.00	0.00	0.00	
6,394.2	0.00	270.67	6,171.0	-375.0	1,305.1	2.00	-2.00	0.00	180.00	
6,594.2	0.00	270.67	6,371.0	-375.0	1,305.1	0.00	0.00	0.00	0.00	
7,494.2	90.00	270.67	6,944.0	-368.3	732.2	10.00	10.00	0.00	0.00	GF O-34-33HN LP
17,752.9	90.00	270.67	6,944.1	-248.4	-9,525.8	0.00	0.00	0.00	0.00	GF O-34-33HN PBHL



Database:	EDM	Local Co-ordinate Reference:	Well GROVES FARM O-34-33HN
Company:	Bayswater Exploration & Production, LLC	TVD Reference:	KB @ 4869.0usft (Original Well Elev)
Project:	DJ Basin	MD Reference:	KB @ 4869.0usft (Original Well Elev)
Site:	Groves Farm 34-L Pad	North Reference:	True
Well:	GROVES FARM O-34-33HN	Survey Calculation Method:	Minimum Curvature
Wellbore:	Wellbore #1		
Design:	Design #1		

Planned Survey									
Measured Depth (usft)	Inclination (°)	Azimuth (°)	Vertical Depth (usft)	+N/-S (usft)	+E/-W (usft)	Vertical Section (usft)	Dogleg Rate (°/100usft)	Build Rate (°/100usft)	Turn Rate (°/100usft)
0.0	0.00	0.00	0.0	0.0	0.0	0.0	0.00	0.00	0.00
100.0	0.00	0.00	100.0	0.0	0.0	0.0	0.00	0.00	0.00
200.0	0.00	0.00	200.0	0.0	0.0	0.0	0.00	0.00	0.00
300.0	0.00	0.00	300.0	0.0	0.0	0.0	0.00	0.00	0.00
400.0	0.00	0.00	400.0	0.0	0.0	0.0	0.00	0.00	0.00
500.0	0.00	0.00	500.0	0.0	0.0	0.0	0.00	0.00	0.00
600.0	0.00	0.00	600.0	0.0	0.0	0.0	0.00	0.00	0.00
700.0	0.00	0.00	700.0	0.0	0.0	0.0	0.00	0.00	0.00
800.0	0.00	0.00	800.0	0.0	0.0	0.0	0.00	0.00	0.00
900.0	0.00	0.00	900.0	0.0	0.0	0.0	0.00	0.00	0.00
1,000.0	0.00	0.00	1,000.0	0.0	0.0	0.0	0.00	0.00	0.00
1,100.0	0.00	0.00	1,100.0	0.0	0.0	0.0	0.00	0.00	0.00
1,200.0	0.00	0.00	1,200.0	0.0	0.0	0.0	0.00	0.00	0.00
1,300.0	0.00	0.00	1,300.0	0.0	0.0	0.0	0.00	0.00	0.00
1,400.0	0.00	0.00	1,400.0	0.0	0.0	0.0	0.00	0.00	0.00
1,500.0	0.00	0.00	1,500.0	0.0	0.0	0.0	0.00	0.00	0.00
1,600.0	2.00	106.03	1,600.0	-0.5	1.7	-1.7	2.00	2.00	0.00
1,700.0	4.00	106.03	1,699.8	-1.9	6.7	-6.7	2.00	2.00	0.00
1,800.0	6.00	106.03	1,799.5	-4.3	15.1	-15.0	2.00	2.00	0.00
1,900.0	8.00	106.03	1,898.7	-7.7	26.8	-26.6	2.00	2.00	0.00
2,000.0	10.00	106.03	1,997.5	-12.0	41.8	-41.5	2.00	2.00	0.00
2,100.0	12.00	106.03	2,095.6	-17.3	60.2	-59.7	2.00	2.00	0.00
2,200.0	14.00	106.03	2,193.1	-23.5	81.8	-81.1	2.00	2.00	0.00
2,300.0	16.00	106.03	2,289.6	-30.6	106.7	-105.8	2.00	2.00	0.00
2,400.0	18.00	106.03	2,385.3	-38.7	134.8	-133.7	2.00	2.00	0.00
2,500.0	20.00	106.03	2,479.8	-47.7	166.0	-164.7	2.00	2.00	0.00
2,523.9	20.48	106.03	2,502.3	-50.0	174.0	-172.6	2.00	2.00	0.00
2,600.0	20.48	106.03	2,573.5	-57.3	199.6	-198.0	0.00	0.00	0.00
2,700.0	20.48	106.03	2,667.2	-67.0	233.2	-231.4	0.00	0.00	0.00
2,800.0	20.48	106.03	2,760.9	-76.7	266.8	-264.7	0.00	0.00	0.00
2,900.0	20.48	106.03	2,854.6	-86.3	300.5	-298.1	0.00	0.00	0.00
3,000.0	20.48	106.03	2,948.3	-96.0	334.1	-331.5	0.00	0.00	0.00
3,100.0	20.48	106.03	3,041.9	-105.7	367.7	-364.8	0.00	0.00	0.00
3,200.0	20.48	106.03	3,135.6	-115.3	401.3	-398.2	0.00	0.00	0.00
3,300.0	20.48	106.03	3,229.3	-125.0	435.0	-431.6	0.00	0.00	0.00
3,400.0	20.48	106.03	3,323.0	-134.6	468.6	-464.9	0.00	0.00	0.00
3,500.0	20.48	106.03	3,416.7	-144.3	502.2	-498.3	0.00	0.00	0.00
3,600.0	20.48	106.03	3,510.3	-154.0	535.8	-531.6	0.00	0.00	0.00
3,700.0	20.48	106.03	3,604.0	-163.6	569.5	-565.0	0.00	0.00	0.00
3,800.0	20.48	106.03	3,697.7	-173.3	603.1	-598.4	0.00	0.00	0.00
3,900.0	20.48	106.03	3,791.4	-182.9	636.7	-631.7	0.00	0.00	0.00
4,000.0	20.48	106.03	3,885.1	-192.6	670.3	-665.1	0.00	0.00	0.00
4,100.0	20.48	106.03	3,978.7	-202.3	704.0	-698.4	0.00	0.00	0.00
4,200.0	20.48	106.03	4,072.4	-211.9	737.6	-731.8	0.00	0.00	0.00
4,300.0	20.48	106.03	4,166.1	-221.6	771.2	-765.2	0.00	0.00	0.00
4,400.0	20.48	106.03	4,259.8	-231.2	804.8	-798.5	0.00	0.00	0.00
4,500.0	20.48	106.03	4,353.5	-240.9	838.5	-831.9	0.00	0.00	0.00
4,600.0	20.48	106.03	4,447.1	-250.6	872.1	-865.3	0.00	0.00	0.00
4,700.0	20.48	106.03	4,540.8	-260.2	905.7	-898.6	0.00	0.00	0.00
4,800.0	20.48	106.03	4,634.5	-269.9	939.3	-932.0	0.00	0.00	0.00
4,900.0	20.48	106.03	4,728.2	-279.6	973.0	-965.3	0.00	0.00	0.00
5,000.0	20.48	106.03	4,821.9	-289.2	1,006.6	-998.7	0.00	0.00	0.00
5,100.0	20.48	106.03	4,915.5	-298.9	1,040.2	-1,032.1	0.00	0.00	0.00
5,200.0	20.48	106.03	5,009.2	-308.5	1,073.8	-1,065.4	0.00	0.00	0.00



Database:	EDM	Local Co-ordinate Reference:	Well GROVES FARM O-34-33HN
Company:	Bayswater Exploration & Production, LLC	TVD Reference:	KB @ 4869.0usft (Original Well Elev)
Project:	DJ Basin	MD Reference:	KB @ 4869.0usft (Original Well Elev)
Site:	Groves Farm 34-L Pad	North Reference:	True
Well:	GROVES FARM O-34-33HN	Survey Calculation Method:	Minimum Curvature
Wellbore:	Wellbore #1		
Design:	Design #1		

Planned Survey									
Measured Depth (usft)	Inclination (°)	Azimuth (°)	Vertical Depth (usft)	+N/-S (usft)	+E/-W (usft)	Vertical Section (usft)	Dogleg Rate (°/100usft)	Build Rate (°/100usft)	Turn Rate (°/100usft)
5,300.0	20.48	106.03	5,102.9	-318.2	1,107.5	-1,098.8	0.00	0.00	0.00
5,370.3	20.48	106.03	5,168.8	-325.0	1,131.1	-1,122.3	0.00	0.00	0.00
5,400.0	19.88	106.03	5,196.6	-327.8	1,140.9	-1,132.0	2.00	-2.00	0.00
5,500.0	17.88	106.03	5,291.2	-336.8	1,172.1	-1,162.9	2.00	-2.00	0.00
5,600.0	15.88	106.03	5,386.9	-344.8	1,200.0	-1,190.6	2.00	-2.00	0.00
5,700.0	13.88	106.03	5,483.6	-351.9	1,224.7	-1,215.1	2.00	-2.00	0.00
5,800.0	11.88	106.03	5,581.0	-358.0	1,246.1	-1,236.3	2.00	-2.00	0.00
5,900.0	9.88	106.03	5,679.2	-363.2	1,264.2	-1,254.3	2.00	-2.00	0.00
6,000.0	7.88	106.03	5,778.0	-367.5	1,279.1	-1,269.1	2.00	-2.00	0.00
6,100.0	5.88	106.03	5,877.3	-370.8	1,290.6	-1,280.5	2.00	-2.00	0.00
6,200.0	3.88	106.03	5,976.9	-373.2	1,298.8	-1,288.6	2.00	-2.00	0.00
6,300.0	1.88	106.03	6,076.8	-374.6	1,303.6	-1,293.4	2.00	-2.00	0.00
6,394.2	0.00	270.67	6,171.0	-375.0	1,305.1	-1,294.9	2.00	-2.00	0.00
6,400.0	0.00	0.00	6,176.8	-375.0	1,305.1	-1,294.9	0.00	0.00	0.00
6,500.0	0.00	0.00	6,276.8	-375.0	1,305.1	-1,294.9	0.00	0.00	0.00
6,594.2	0.00	270.67	6,371.0	-375.0	1,305.1	-1,294.9	0.00	0.00	0.00
6,600.0	0.58	270.67	6,376.8	-375.0	1,305.1	-1,294.9	10.00	10.00	0.00
6,700.0	10.58	270.67	6,476.2	-374.9	1,295.4	-1,285.2	10.00	10.00	0.00
6,800.0	20.58	270.67	6,572.4	-374.6	1,268.6	-1,258.4	10.00	10.00	0.00
6,900.0	30.58	270.67	6,662.5	-374.1	1,225.5	-1,215.3	10.00	10.00	0.00
7,000.0	40.58	270.67	6,743.7	-373.4	1,167.4	-1,157.2	10.00	10.00	0.00
7,100.0	50.58	270.67	6,813.6	-372.5	1,096.0	-1,085.9	10.00	10.00	0.00
7,200.0	60.58	270.67	6,870.1	-371.6	1,013.7	-1,003.6	10.00	10.00	0.00
7,300.0	70.58	270.67	6,911.4	-370.5	922.7	-912.8	10.00	10.00	0.00
7,400.0	80.58	270.67	6,936.3	-369.4	826.0	-816.1	10.00	10.00	0.00
7,494.2	90.00	270.67	6,944.0	-368.3	732.2	-722.3	10.00	10.00	0.00
GF O-34-33HN LP									
7,500.0	90.00	270.67	6,944.0	-368.2	726.4	-716.6	0.00	0.00	0.00
7,600.0	90.00	270.67	6,944.0	-367.1	626.4	-616.7	0.00	0.00	0.00
7,700.0	90.00	270.67	6,944.0	-365.9	526.5	-516.7	0.00	0.00	0.00
7,800.0	90.00	270.67	6,944.0	-364.7	426.5	-416.8	0.00	0.00	0.00
7,900.0	90.00	270.67	6,944.0	-363.6	326.5	-316.9	0.00	0.00	0.00
8,000.0	90.00	270.67	6,944.0	-362.4	226.5	-216.9	0.00	0.00	0.00
8,100.0	90.00	270.67	6,944.0	-361.2	126.5	-117.0	0.00	0.00	0.00
8,200.0	90.00	270.67	6,944.0	-360.0	26.5	-17.1	0.00	0.00	0.00
8,300.0	90.00	270.67	6,944.0	-358.9	-73.5	82.8	0.00	0.00	0.00
8,400.0	90.00	270.67	6,944.0	-357.7	-173.5	182.8	0.00	0.00	0.00
8,500.0	90.00	270.67	6,944.0	-356.5	-273.5	282.7	0.00	0.00	0.00
8,600.0	90.00	270.67	6,944.0	-355.4	-373.5	382.6	0.00	0.00	0.00
8,700.0	90.00	270.67	6,944.0	-354.2	-473.5	482.6	0.00	0.00	0.00
8,800.0	90.00	270.67	6,944.0	-353.0	-573.5	582.5	0.00	0.00	0.00
8,900.0	90.00	270.67	6,944.0	-351.9	-673.5	682.4	0.00	0.00	0.00
9,000.0	90.00	270.67	6,944.0	-350.7	-773.5	782.3	0.00	0.00	0.00
9,100.0	90.00	270.67	6,944.0	-349.5	-873.5	882.3	0.00	0.00	0.00
9,200.0	90.00	270.67	6,944.0	-348.4	-973.4	982.2	0.00	0.00	0.00
9,300.0	90.00	270.67	6,944.0	-347.2	-1,073.4	1,082.1	0.00	0.00	0.00
9,400.0	90.00	270.67	6,944.0	-346.0	-1,173.4	1,182.1	0.00	0.00	0.00
9,500.0	90.00	270.67	6,944.0	-344.9	-1,273.4	1,282.0	0.00	0.00	0.00
9,600.0	90.00	270.67	6,944.0	-343.7	-1,373.4	1,381.9	0.00	0.00	0.00
9,700.0	90.00	270.67	6,944.0	-342.5	-1,473.4	1,481.8	0.00	0.00	0.00
9,800.0	90.00	270.67	6,944.0	-341.4	-1,573.4	1,581.8	0.00	0.00	0.00
9,900.0	90.00	270.67	6,944.0	-340.2	-1,673.4	1,681.7	0.00	0.00	0.00
10,000.0	90.00	270.67	6,944.0	-339.0	-1,773.4	1,781.6	0.00	0.00	0.00



Database:	EDM	Local Co-ordinate Reference:	Well GROVES FARM O-34-33HN
Company:	Bayswater Exploration & Production, LLC	TVD Reference:	KB @ 4869.0usft (Original Well Elev)
Project:	DJ Basin	MD Reference:	KB @ 4869.0usft (Original Well Elev)
Site:	Groves Farm 34-L Pad	North Reference:	True
Well:	GROVES FARM O-34-33HN	Survey Calculation Method:	Minimum Curvature
Wellbore:	Wellbore #1		
Design:	Design #1		

Planned Survey										
Measured Depth (usft)	Inclination (°)	Azimuth (°)	Vertical Depth (usft)	+N/-S (usft)	+E/-W (usft)	Vertical Section (usft)	Dogleg Rate (°/100usft)	Build Rate (°/100usft)	Turn Rate (°/100usft)	
10,100.0	90.00	270.67	6,944.0	-337.8	-1,873.4	1,881.6	0.00	0.00	0.00	
10,200.0	90.00	270.67	6,944.0	-336.7	-1,973.4	1,981.5	0.00	0.00	0.00	
10,300.0	90.00	270.67	6,944.0	-335.5	-2,073.4	2,081.4	0.00	0.00	0.00	
10,400.0	90.00	270.67	6,944.0	-334.3	-2,173.4	2,181.3	0.00	0.00	0.00	
10,500.0	90.00	270.67	6,944.0	-333.2	-2,273.4	2,281.3	0.00	0.00	0.00	
10,600.0	90.00	270.67	6,944.0	-332.0	-2,373.3	2,381.2	0.00	0.00	0.00	
10,700.0	90.00	270.67	6,944.0	-330.8	-2,473.3	2,481.1	0.00	0.00	0.00	
10,800.0	90.00	270.67	6,944.0	-329.7	-2,573.3	2,581.1	0.00	0.00	0.00	
10,900.0	90.00	270.67	6,944.0	-328.5	-2,673.3	2,681.0	0.00	0.00	0.00	
11,000.0	90.00	270.67	6,944.0	-327.3	-2,773.3	2,780.9	0.00	0.00	0.00	
11,100.0	90.00	270.67	6,944.0	-326.2	-2,873.3	2,880.8	0.00	0.00	0.00	
11,200.0	90.00	270.67	6,944.0	-325.0	-2,973.3	2,980.8	0.00	0.00	0.00	
11,300.0	90.00	270.67	6,944.0	-323.8	-3,073.3	3,080.7	0.00	0.00	0.00	
11,400.0	90.00	270.67	6,944.0	-322.7	-3,173.3	3,180.6	0.00	0.00	0.00	
11,500.0	90.00	270.67	6,944.0	-321.5	-3,273.3	3,280.6	0.00	0.00	0.00	
11,600.0	90.00	270.67	6,944.0	-320.3	-3,373.3	3,380.5	0.00	0.00	0.00	
11,700.0	90.00	270.67	6,944.0	-319.2	-3,473.3	3,480.4	0.00	0.00	0.00	
11,800.0	90.00	270.67	6,944.0	-318.0	-3,573.3	3,580.3	0.00	0.00	0.00	
11,900.0	90.00	270.67	6,944.0	-316.8	-3,673.3	3,680.3	0.00	0.00	0.00	
12,000.0	90.00	270.67	6,944.0	-315.6	-3,773.3	3,780.2	0.00	0.00	0.00	
12,100.0	90.00	270.67	6,944.0	-314.5	-3,873.2	3,880.1	0.00	0.00	0.00	
12,200.0	90.00	270.67	6,944.0	-313.3	-3,973.2	3,980.1	0.00	0.00	0.00	
12,300.0	90.00	270.67	6,944.0	-312.1	-4,073.2	4,080.0	0.00	0.00	0.00	
12,400.0	90.00	270.67	6,944.0	-311.0	-4,173.2	4,179.9	0.00	0.00	0.00	
12,500.0	90.00	270.67	6,944.0	-309.8	-4,273.2	4,279.8	0.00	0.00	0.00	
12,600.0	90.00	270.67	6,944.0	-308.6	-4,373.2	4,379.8	0.00	0.00	0.00	
12,700.0	90.00	270.67	6,944.1	-307.5	-4,473.2	4,479.7	0.00	0.00	0.00	
12,800.0	90.00	270.67	6,944.1	-306.3	-4,573.2	4,579.6	0.00	0.00	0.00	
12,900.0	90.00	270.67	6,944.1	-305.1	-4,673.2	4,679.6	0.00	0.00	0.00	
13,000.0	90.00	270.67	6,944.1	-304.0	-4,773.2	4,779.5	0.00	0.00	0.00	
13,100.0	90.00	270.67	6,944.1	-302.8	-4,873.2	4,879.4	0.00	0.00	0.00	
13,200.0	90.00	270.67	6,944.1	-301.6	-4,973.2	4,979.3	0.00	0.00	0.00	
13,300.0	90.00	270.67	6,944.1	-300.5	-5,073.2	5,079.3	0.00	0.00	0.00	
13,400.0	90.00	270.67	6,944.1	-299.3	-5,173.2	5,179.2	0.00	0.00	0.00	
13,500.0	90.00	270.67	6,944.1	-298.1	-5,273.2	5,279.1	0.00	0.00	0.00	
13,600.0	90.00	270.67	6,944.1	-297.0	-5,373.1	5,379.1	0.00	0.00	0.00	
13,700.0	90.00	270.67	6,944.1	-295.8	-5,473.1	5,479.0	0.00	0.00	0.00	
13,800.0	90.00	270.67	6,944.1	-294.6	-5,573.1	5,578.9	0.00	0.00	0.00	
13,900.0	90.00	270.67	6,944.1	-293.4	-5,673.1	5,678.8	0.00	0.00	0.00	
14,000.0	90.00	270.67	6,944.1	-292.3	-5,773.1	5,778.8	0.00	0.00	0.00	
14,100.0	90.00	270.67	6,944.1	-291.1	-5,873.1	5,878.7	0.00	0.00	0.00	
14,200.0	90.00	270.67	6,944.1	-289.9	-5,973.1	5,978.6	0.00	0.00	0.00	
14,300.0	90.00	270.67	6,944.1	-288.8	-6,073.1	6,078.6	0.00	0.00	0.00	
14,400.0	90.00	270.67	6,944.1	-287.6	-6,173.1	6,178.5	0.00	0.00	0.00	
14,500.0	90.00	270.67	6,944.1	-286.4	-6,273.1	6,278.4	0.00	0.00	0.00	
14,600.0	90.00	270.67	6,944.1	-285.3	-6,373.1	6,378.3	0.00	0.00	0.00	
14,700.0	90.00	270.67	6,944.1	-284.1	-6,473.1	6,478.3	0.00	0.00	0.00	
14,800.0	90.00	270.67	6,944.1	-282.9	-6,573.1	6,578.2	0.00	0.00	0.00	
14,900.0	90.00	270.67	6,944.1	-281.8	-6,673.1	6,678.1	0.00	0.00	0.00	
15,000.0	90.00	270.67	6,944.1	-280.6	-6,773.0	6,778.1	0.00	0.00	0.00	
15,100.0	90.00	270.67	6,944.1	-279.4	-6,873.0	6,878.0	0.00	0.00	0.00	
15,200.0	90.00	270.67	6,944.1	-278.3	-6,973.0	6,977.9	0.00	0.00	0.00	
15,300.0	90.00	270.67	6,944.1	-277.1	-7,073.0	7,077.8	0.00	0.00	0.00	
15,400.0	90.00	270.67	6,944.1	-275.9	-7,173.0	7,177.8	0.00	0.00	0.00	



Database:	EDM	Local Co-ordinate Reference:	Well GROVES FARM O-34-33HN
Company:	Bayswater Exploration & Production, LLC	TVD Reference:	KB @ 4869.0usft (Original Well Elev)
Project:	DJ Basin	MD Reference:	KB @ 4869.0usft (Original Well Elev)
Site:	Groves Farm 34-L Pad	North Reference:	True
Well:	GROVES FARM O-34-33HN	Survey Calculation Method:	Minimum Curvature
Wellbore:	Wellbore #1		
Design:	Design #1		

Planned Survey										
Measured Depth (usft)	Inclination (°)	Azimuth (°)	Vertical Depth (usft)	+N/-S (usft)	+E/-W (usft)	Vertical Section (usft)	Dogleg Rate (°/100usft)	Build Rate (°/100usft)	Turn Rate (°/100usft)	
15,500.0	90.00	270.67	6,944.1	-274.8	-7,273.0	7,277.7	0.00	0.00	0.00	
15,600.0	90.00	270.67	6,944.1	-273.6	-7,373.0	7,377.6	0.00	0.00	0.00	
15,700.0	90.00	270.67	6,944.1	-272.4	-7,473.0	7,477.6	0.00	0.00	0.00	
15,800.0	90.00	270.67	6,944.1	-271.2	-7,573.0	7,577.5	0.00	0.00	0.00	
15,900.0	90.00	270.67	6,944.1	-270.1	-7,673.0	7,677.4	0.00	0.00	0.00	
16,000.0	90.00	270.67	6,944.1	-268.9	-7,773.0	7,777.3	0.00	0.00	0.00	
16,100.0	90.00	270.67	6,944.1	-267.7	-7,873.0	7,877.3	0.00	0.00	0.00	
16,200.0	90.00	270.67	6,944.1	-266.6	-7,973.0	7,977.2	0.00	0.00	0.00	
16,300.0	90.00	270.67	6,944.1	-265.4	-8,073.0	8,077.1	0.00	0.00	0.00	
16,400.0	90.00	270.67	6,944.1	-264.2	-8,173.0	8,177.1	0.00	0.00	0.00	
16,500.0	90.00	270.67	6,944.1	-263.1	-8,272.9	8,277.0	0.00	0.00	0.00	
16,600.0	90.00	270.67	6,944.1	-261.9	-8,372.9	8,376.9	0.00	0.00	0.00	
16,700.0	90.00	270.67	6,944.1	-260.7	-8,472.9	8,476.8	0.00	0.00	0.00	
16,800.0	90.00	270.67	6,944.1	-259.6	-8,572.9	8,576.8	0.00	0.00	0.00	
16,900.0	90.00	270.67	6,944.1	-258.4	-8,672.9	8,676.7	0.00	0.00	0.00	
17,000.0	90.00	270.67	6,944.1	-257.2	-8,772.9	8,776.6	0.00	0.00	0.00	
17,100.0	90.00	270.67	6,944.1	-256.1	-8,872.9	8,876.6	0.00	0.00	0.00	
17,200.0	90.00	270.67	6,944.1	-254.9	-8,972.9	8,976.5	0.00	0.00	0.00	
17,300.0	90.00	270.67	6,944.1	-253.7	-9,072.9	9,076.4	0.00	0.00	0.00	
17,400.0	90.00	270.67	6,944.1	-252.6	-9,172.9	9,176.4	0.00	0.00	0.00	
17,500.0	90.00	270.67	6,944.1	-251.4	-9,272.9	9,276.3	0.00	0.00	0.00	
17,600.0	90.00	270.67	6,944.1	-250.2	-9,372.9	9,376.2	0.00	0.00	0.00	
17,700.0	90.00	270.67	6,944.1	-249.0	-9,472.9	9,476.1	0.00	0.00	0.00	
17,752.9	90.00	270.67	6,944.1	-248.4	-9,525.8	9,529.0	0.00	0.00	0.00	
GF O-34-33HN PBHL										

Design Targets										
Target Name	Dip Angle (°)	Dip Dir. (°)	TVD (usft)	+N/-S (usft)	+E/-W (usft)	Northing (usft)	Easting (usft)	Latitude	Longitude	
GF O-34-33HN LP	0.00	0.00	6,944.0	-368.3	732.2	1,436,794.73	3,238,977.16	40° 31' 45.199 N	104° 38' 25.055 W	
- hit/miss target										
- plan hits target center										
- Point										
GF O-34-33HN PBHL	0.00	0.00	6,944.1	-248.4	-9,525.8	1,436,815.44	3,228,718.53	40° 31' 46.366 N	104° 40' 37.902 W	
- hit/miss target										
- plan hits target center										
- Point										