



**BAYSWATER**

# **Bayswater Exploration & Production, LLC**

**DJ Basin**

**Groves Farm 34-L Pad**

**GROVES FARM N-34-33HC**

**Wellbore #1**

**Plan: Design #1**

## **Standard Planning Report**

**13 April, 2020**



# BAYSWATER

Bayswater Exploration &amp; Production, LLC

Pad Name: Groves Farm 34-L Pad  
Well Name: GROVES FARM N-34-33HC  
Ground Level: 4844.0  
SHL Latitude: 40° 31' 48.986 N  
SHL Longitude: 104° 38' 34.534 W

## SECTION DETAILS

Sec	MD	Inc	Azi	TVD	+N/-S	+E/-W	Dleg	TFace	VSect	Target
1	0.0	0.00	0.00	0.0	0.0	0.0	0.00	0.00	0.0	
2	1500.0	0.00	0.00	1500.0	0.0	0.0	0.00	0.00	0.0	
3	2173.4	13.47	100.76	2167.2	-14.7	77.4	2.00	100.76	-77.3	
4	5825.4	13.47	100.76	5718.8	-173.4	913.1	0.00	0.00	-911.4	
5	6498.9	0.00	271.93	6386.1	-188.1	990.5	2.00	180.00	-988.7	
6	6698.9	0.00	271.93	6586.1	-188.1	990.5	0.00	0.00	-988.7	
7	7594.7	89.59	271.93	7159.0	-169.0	422.0	10.00	0.00	-420.4	GF N-34-33HC LP
8	12094.7	89.59	271.93	7191.6	-17.8	-4075.4	0.00	0.00	4075.4	
9	12193.0	89.59	273.95	7192.3	-12.8	-4173.5	2.06	89.94	4173.5	
10	12430.3	89.58	269.07	7194.0	-6.5	-4410.6	2.06	-90.08	4410.5	GF N-34-33HC VP
11	17235.3	89.58	269.07	7229.0	-84.6	-9214.9	0.00	0.00	9215.3	GF N-34-33HC PBHL

## DESIGN TARGET DETAILS

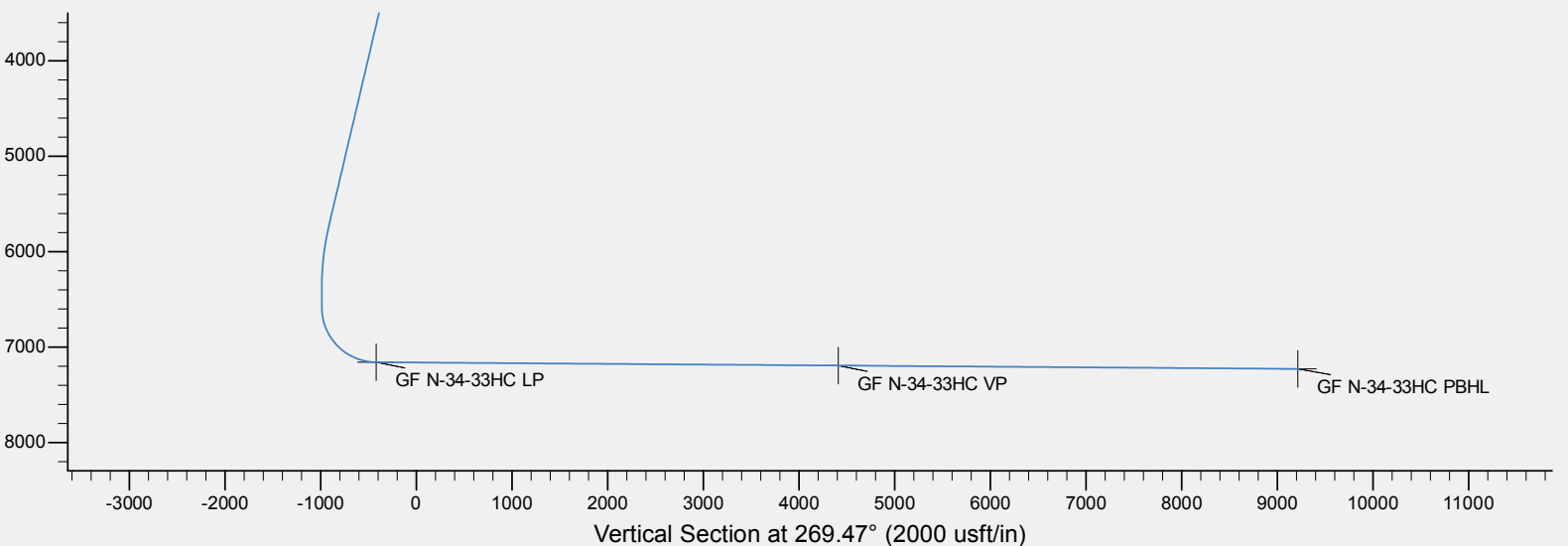
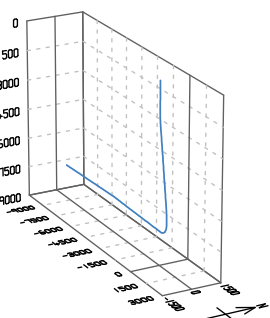
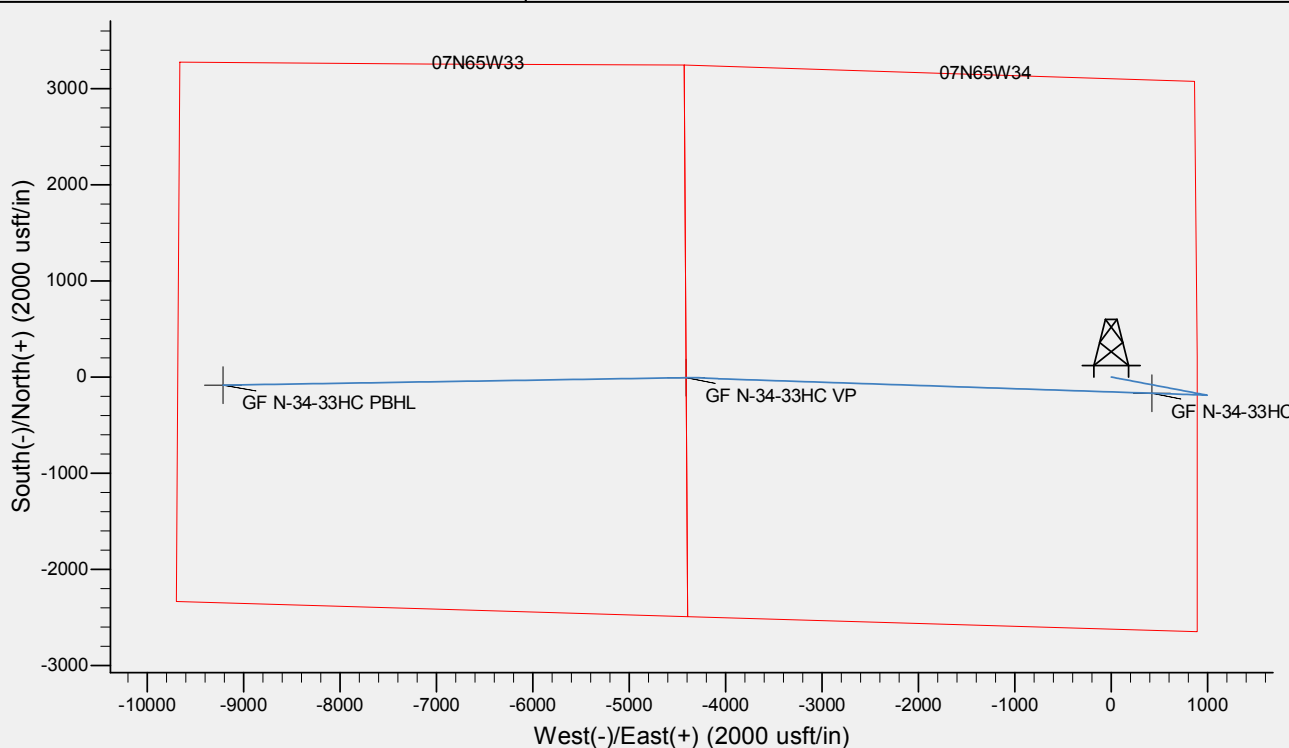
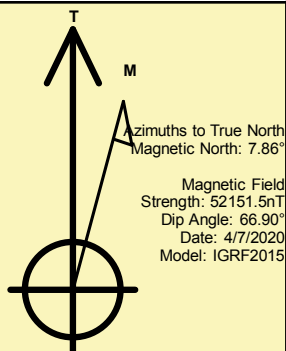
Name	TVD	+N/-S	+E/-W	Northing	Easting	Latitude	Longitude	Shape
GF N-34-33HC LP	7159.0	-169.0	422.0	1437005.93	3238665.15	40° 31' 47.316 N	104° 38' 29.069 W	Point
GF N-34-33HC VP	- plan hits target center 7194.0	-6.5	-4410.6	1437121.72	3233831.20	40° 31' 48.918 N	104° 39' 31.655 W	Point
GF N-34-33HC PBHL	- plan hits target center 7229.0	-84.6	-9214.9	1436997.20	3229027.91	40° 31' 48.133 N	104° 40' 33.874 W	Point

## REFERENCE INFORMATION

Co-ordinate (N/E) Reference: Well GROVES FARM N-34-33HC, True North  
Vertical (TVD) Reference: KB @ 4869.0usft (Original Well Elev)  
Section (VS) Reference: Slot - (0.0N, 0.0E)  
Measured Depth Reference: KB @ 4869.0usft (Original Well Elev)  
Calculation Method: Minimum Curvature

## CASING DETAILS

No casing data is available





<b>Database:</b>	EDM	<b>Local Co-ordinate Reference:</b>	Well GROVES FARM N-34-33HC
<b>Company:</b>	Bayswater Exploration & Production, LLC	<b>TVD Reference:</b>	KB @ 4869.0usft (Original Well Elev)
<b>Project:</b>	DJ Basin	<b>MD Reference:</b>	KB @ 4869.0usft (Original Well Elev)
<b>Site:</b>	Groves Farm 34-L Pad	<b>North Reference:</b>	True
<b>Well:</b>	GROVES FARM N-34-33HC	<b>Survey Calculation Method:</b>	Minimum Curvature
<b>Wellbore:</b>	Wellbore #1		
<b>Design:</b>	Design #1		

<b>Project</b>	DJ Basin, DJ Basin		
<b>Map System:</b>	US State Plane 1983	<b>System Datum:</b>	Mean Sea Level
<b>Geo Datum:</b>	North American Datum 1983		
<b>Map Zone:</b>	Colorado Northern Zone		

Site		Groves Farm 34-L Pad			
Site Position:		Northing:	1,437,185.82 usft	Latitude:	40° 31' 49.134 N
From:	Lat/Long	Easting:	3,238,241.98 usft	Longitude:	104° 38' 34.526 W
Position Uncertainty:	0.0 usft	Slot Radius:	13-3/16 "	Grid Convergence:	0.55 °

Well	GROVES FARM N-34-33HC					
Well Position	+N/-S	-14.9 usft	Northing:	1,437,170.87 usft	Latitude:	40° 31' 48.986 N
	+E/-W	-0.6 usft	Easting:	3,238,241.57 usft	Longitude:	104° 38' 34.534 W
Position Uncertainty		0.0 usft	Wellhead Elevation:		Ground Level:	4,844.0 usft

<b>Wellbore</b>	Wellbore #1				
<b>Magnetics</b>	<b>Model Name</b>	<b>Sample Date</b>	<b>Declination (°)</b>	<b>Dip Angle (°)</b>	<b>Field Strength (nT)</b>
	IGRF2015	4/7/2020	7.86	66.90	52,151.50694281

<b>Design</b>	Design #1				
<b>Audit Notes:</b>					
<b>Version:</b>	<b>Phase:</b>	PLAN	<b>Tie On Depth:</b>	0.0	
<b>Vertical Section:</b>	<b>Depth From (TVD) (usft)</b>	<b>+N/-S (usft)</b>	<b>+E/-W (usft)</b>	<b>Direction (°)</b>	
	0.0	0.0	0.0	269.47	

<b>Plan Survey Tool Program</b>	<b>Date</b>	4/7/2020			
<b>Depth From (usft)</b>	<b>Depth To (usft)</b>	<b>Survey (Wellbore)</b>	<b>Tool Name</b>	<b>Remarks</b>	
1	0.0	17,235.3	Design #1 (Wellbore #1)	MWD	
				OWSG MWD - Standard	



<b>Database:</b>	EDM	<b>Local Co-ordinate Reference:</b>	Well GROVES FARM N-34-33HC
<b>Company:</b>	Bayswater Exploration & Production, LLC	<b>TVD Reference:</b>	KB @ 4869.0usft (Original Well Elev)
<b>Project:</b>	DJ Basin	<b>MD Reference:</b>	KB @ 4869.0usft (Original Well Elev)
<b>Site:</b>	Groves Farm 34-L Pad	<b>North Reference:</b>	True
<b>Well:</b>	GROVES FARM N-34-33HC	<b>Survey Calculation Method:</b>	Minimum Curvature
<b>Wellbore:</b>	Wellbore #1		
<b>Design:</b>	Design #1		

Plan Sections										
Measured Depth (usft)	Inclination (°)	Azimuth (°)	Vertical Depth (usft)	+N/-S (usft)	+E/-W (usft)	Dogleg Rate (°/100usft)	Build Rate (°/100usft)	Turn Rate (°/100usft)	TFO (°)	Target
0.0	0.00	0.00	0.0	0.0	0.0	0.00	0.00	0.00	0.00	
1,500.0	0.00	0.00	1,500.0	0.0	0.0	0.00	0.00	0.00	0.00	
2,173.4	13.47	100.76	2,167.2	-14.7	77.4	2.00	2.00	0.00	100.76	
5,825.4	13.47	100.76	5,718.8	-173.4	913.1	0.00	0.00	0.00	0.00	
6,498.9	0.00	271.93	6,386.1	-188.1	990.5	2.00	-2.00	0.00	180.00	
6,698.9	0.00	271.93	6,586.1	-188.1	990.5	0.00	0.00	0.00	0.00	
7,594.7	89.59	271.93	7,159.0	-169.0	422.0	10.00	10.00	0.00	0.00	GF N-34-33HC LP
12,094.7	89.59	271.93	7,191.6	-17.8	-4,075.4	0.00	0.00	0.00	0.00	
12,193.0	89.59	273.95	7,192.3	-12.8	-4,173.5	2.06	0.00	2.06	89.94	
12,430.3	89.58	269.07	7,194.0	-6.5	-4,410.6	2.06	0.00	-2.06	-90.08	GF N-34-33HC VP
17,235.3	89.58	269.07	7,229.0	-84.6	-9,214.9	0.00	0.00	0.00	0.00	GF N-34-33HC PBHL



<b>Database:</b>	EDM	<b>Local Co-ordinate Reference:</b>	Well GROVES FARM N-34-33HC
<b>Company:</b>	Bayswater Exploration & Production, LLC	<b>TVD Reference:</b>	KB @ 4869.0usft (Original Well Elev)
<b>Project:</b>	DJ Basin	<b>MD Reference:</b>	KB @ 4869.0usft (Original Well Elev)
<b>Site:</b>	Groves Farm 34-L Pad	<b>North Reference:</b>	True
<b>Well:</b>	GROVES FARM N-34-33HC	<b>Survey Calculation Method:</b>	Minimum Curvature
<b>Wellbore:</b>	Wellbore #1		
<b>Design:</b>	Design #1		

Planned Survey									
Measured Depth (usft)	Inclination (°)	Azimuth (°)	Vertical Depth (usft)	+N/-S (usft)	+E/-W (usft)	Vertical Section (usft)	Dogleg Rate (°/100usft)	Build Rate (°/100usft)	Turn Rate (°/100usft)
0.0	0.00	0.00	0.0	0.0	0.0	0.0	0.00	0.00	0.00
100.0	0.00	0.00	100.0	0.0	0.0	0.0	0.00	0.00	0.00
200.0	0.00	0.00	200.0	0.0	0.0	0.0	0.00	0.00	0.00
300.0	0.00	0.00	300.0	0.0	0.0	0.0	0.00	0.00	0.00
400.0	0.00	0.00	400.0	0.0	0.0	0.0	0.00	0.00	0.00
500.0	0.00	0.00	500.0	0.0	0.0	0.0	0.00	0.00	0.00
600.0	0.00	0.00	600.0	0.0	0.0	0.0	0.00	0.00	0.00
700.0	0.00	0.00	700.0	0.0	0.0	0.0	0.00	0.00	0.00
800.0	0.00	0.00	800.0	0.0	0.0	0.0	0.00	0.00	0.00
900.0	0.00	0.00	900.0	0.0	0.0	0.0	0.00	0.00	0.00
1,000.0	0.00	0.00	1,000.0	0.0	0.0	0.0	0.00	0.00	0.00
1,100.0	0.00	0.00	1,100.0	0.0	0.0	0.0	0.00	0.00	0.00
1,200.0	0.00	0.00	1,200.0	0.0	0.0	0.0	0.00	0.00	0.00
1,300.0	0.00	0.00	1,300.0	0.0	0.0	0.0	0.00	0.00	0.00
1,400.0	0.00	0.00	1,400.0	0.0	0.0	0.0	0.00	0.00	0.00
1,500.0	0.00	0.00	1,500.0	0.0	0.0	0.0	0.00	0.00	0.00
1,600.0	2.00	100.76	1,600.0	-0.3	1.7	-1.7	2.00	2.00	0.00
1,700.0	4.00	100.76	1,699.8	-1.3	6.9	-6.8	2.00	2.00	0.00
1,800.0	6.00	100.76	1,799.5	-2.9	15.4	-15.4	2.00	2.00	0.00
1,900.0	8.00	100.76	1,898.7	-5.2	27.4	-27.3	2.00	2.00	0.00
2,000.0	10.00	100.76	1,997.5	-8.1	42.8	-42.7	2.00	2.00	0.00
2,100.0	12.00	100.76	2,095.6	-11.7	61.5	-61.4	2.00	2.00	0.00
2,173.4	13.47	100.76	2,167.2	-14.7	77.4	-77.3	2.00	2.00	0.00
2,200.0	13.47	100.76	2,193.1	-15.9	83.5	-83.3	0.00	0.00	0.00
2,300.0	13.47	100.76	2,290.3	-20.2	106.4	-106.2	0.00	0.00	0.00
2,400.0	13.47	100.76	2,387.6	-24.6	129.2	-129.0	0.00	0.00	0.00
2,500.0	13.47	100.76	2,484.8	-28.9	152.1	-151.9	0.00	0.00	0.00
2,600.0	13.47	100.76	2,582.1	-33.2	175.0	-174.7	0.00	0.00	0.00
2,700.0	13.47	100.76	2,679.3	-37.6	197.9	-197.5	0.00	0.00	0.00
2,800.0	13.47	100.76	2,776.6	-41.9	220.8	-220.4	0.00	0.00	0.00
2,900.0	13.47	100.76	2,873.8	-46.3	243.7	-243.2	0.00	0.00	0.00
3,000.0	13.47	100.76	2,971.1	-50.6	266.5	-266.1	0.00	0.00	0.00
3,100.0	13.47	100.76	3,068.3	-55.0	289.4	-288.9	0.00	0.00	0.00
3,200.0	13.47	100.76	3,165.6	-59.3	312.3	-311.7	0.00	0.00	0.00
3,300.0	13.47	100.76	3,262.8	-63.7	335.2	-334.6	0.00	0.00	0.00
3,400.0	13.47	100.76	3,360.1	-68.0	358.1	-357.4	0.00	0.00	0.00
3,500.0	13.47	100.76	3,457.3	-72.4	380.9	-380.3	0.00	0.00	0.00
3,600.0	13.47	100.76	3,554.6	-76.7	403.8	-403.1	0.00	0.00	0.00
3,700.0	13.47	100.76	3,651.8	-81.1	426.7	-426.0	0.00	0.00	0.00
3,800.0	13.47	100.76	3,749.1	-85.4	449.6	-448.8	0.00	0.00	0.00
3,900.0	13.47	100.76	3,846.3	-89.7	472.5	-471.6	0.00	0.00	0.00
4,000.0	13.47	100.76	3,943.6	-94.1	495.4	-494.5	0.00	0.00	0.00
4,100.0	13.47	100.76	4,040.8	-98.4	518.2	-517.3	0.00	0.00	0.00
4,200.0	13.47	100.76	4,138.1	-102.8	541.1	-540.2	0.00	0.00	0.00
4,300.0	13.47	100.76	4,235.3	-107.1	564.0	-563.0	0.00	0.00	0.00
4,400.0	13.47	100.76	4,332.6	-111.5	586.9	-585.8	0.00	0.00	0.00
4,500.0	13.47	100.76	4,429.8	-115.8	609.8	-608.7	0.00	0.00	0.00
4,600.0	13.47	100.76	4,527.1	-120.2	632.7	-631.5	0.00	0.00	0.00
4,700.0	13.47	100.76	4,624.3	-124.5	655.5	-654.4	0.00	0.00	0.00
4,800.0	13.47	100.76	4,721.6	-128.9	678.4	-677.2	0.00	0.00	0.00
4,900.0	13.47	100.76	4,818.8	-133.2	701.3	-700.0	0.00	0.00	0.00
5,000.0	13.47	100.76	4,916.1	-137.6	724.2	-722.9	0.00	0.00	0.00
5,100.0	13.47	100.76	5,013.3	-141.9	747.1	-745.7	0.00	0.00	0.00
5,200.0	13.47	100.76	5,110.6	-146.3	769.9	-768.6	0.00	0.00	0.00



<b>Database:</b>	EDM	<b>Local Co-ordinate Reference:</b>	Well GROVES FARM N-34-33HC
<b>Company:</b>	Bayswater Exploration & Production, LLC	<b>TVD Reference:</b>	KB @ 4869.0usft (Original Well Elev)
<b>Project:</b>	DJ Basin	<b>MD Reference:</b>	KB @ 4869.0usft (Original Well Elev)
<b>Site:</b>	Groves Farm 34-L Pad	<b>North Reference:</b>	True
<b>Well:</b>	GROVES FARM N-34-33HC	<b>Survey Calculation Method:</b>	Minimum Curvature
<b>Wellbore:</b>	Wellbore #1		
<b>Design:</b>	Design #1		

Planned Survey									
Measured Depth (usft)	Inclination (°)	Azimuth (°)	Vertical Depth (usft)	+N/-S (usft)	+E/-W (usft)	Vertical Section (usft)	Dogleg Rate (°/100usft)	Build Rate (°/100usft)	Turn Rate (°/100usft)
5,300.0	13.47	100.76	5,207.8	-150.6	792.8	-791.4	0.00	0.00	0.00
5,400.0	13.47	100.76	5,305.1	-154.9	815.7	-814.2	0.00	0.00	0.00
5,500.0	13.47	100.76	5,402.3	-159.3	838.6	-837.1	0.00	0.00	0.00
5,600.0	13.47	100.76	5,499.6	-163.6	861.5	-859.9	0.00	0.00	0.00
5,700.0	13.47	100.76	5,596.8	-168.0	884.4	-882.8	0.00	0.00	0.00
5,800.0	13.47	100.76	5,694.1	-172.3	907.2	-905.6	0.00	0.00	0.00
5,825.4	13.47	100.76	5,718.8	-173.4	913.1	-911.4	0.00	0.00	0.00
5,900.0	11.98	100.76	5,791.5	-176.5	929.2	-927.5	2.00	-2.00	0.00
6,000.0	9.98	100.76	5,889.7	-180.1	947.9	-946.2	2.00	-2.00	0.00
6,100.0	7.98	100.76	5,988.5	-183.0	963.2	-961.5	2.00	-2.00	0.00
6,200.0	5.98	100.76	6,087.7	-185.2	975.2	-973.4	2.00	-2.00	0.00
6,300.0	3.98	100.76	6,187.4	-186.9	983.7	-981.9	2.00	-2.00	0.00
6,400.0	1.98	100.76	6,287.2	-187.8	988.8	-987.0	2.00	-2.00	0.00
6,498.9	0.00	271.93	6,386.1	-188.1	990.5	-988.7	2.00	-2.00	0.00
6,500.0	0.00	0.00	6,387.2	-188.1	990.5	-988.7	0.00	0.00	0.00
6,600.0	0.00	0.00	6,487.2	-188.1	990.5	-988.7	0.00	0.00	0.00
6,698.9	0.00	271.93	6,586.1	-188.1	990.5	-988.7	0.00	0.00	0.00
6,700.0	0.11	271.93	6,587.2	-188.1	990.5	-988.7	10.00	10.00	0.00
6,800.0	10.11	271.93	6,686.7	-187.8	981.6	-979.8	10.00	10.00	0.00
6,900.0	20.11	271.93	6,783.1	-187.0	955.5	-953.8	10.00	10.00	0.00
7,000.0	30.11	271.93	6,873.5	-185.5	913.2	-911.4	10.00	10.00	0.00
7,100.0	40.11	271.93	6,955.2	-183.6	855.8	-854.0	10.00	10.00	0.00
7,200.0	50.11	271.93	7,025.7	-181.2	785.0	-783.3	10.00	10.00	0.00
7,300.0	60.11	271.93	7,082.8	-178.5	703.2	-701.5	10.00	10.00	0.00
7,400.0	70.11	271.93	7,124.8	-175.4	612.6	-611.0	10.00	10.00	0.00
7,500.0	80.11	271.93	7,150.5	-172.2	516.1	-514.5	10.00	10.00	0.00
7,594.7	89.59	271.93	7,159.0	-169.0	422.0	-420.4	10.00	10.00	0.00
<b>GF N-34-33HC LP</b>									
7,600.0	89.59	271.93	7,159.0	-168.8	416.7	-415.1	0.00	0.00	0.00
7,700.0	89.59	271.93	7,159.8	-165.5	316.7	-315.2	0.00	0.00	0.00
7,800.0	89.59	271.93	7,160.5	-162.1	216.8	-215.3	0.00	0.00	0.00
7,900.0	89.59	271.93	7,161.2	-158.8	116.9	-115.4	0.00	0.00	0.00
8,000.0	89.59	271.93	7,161.9	-155.4	16.9	-15.5	0.00	0.00	0.00
8,100.0	89.59	271.93	7,162.7	-152.0	-83.0	84.4	0.00	0.00	0.00
8,200.0	89.59	271.93	7,163.4	-148.7	-183.0	184.3	0.00	0.00	0.00
8,300.0	89.59	271.93	7,164.1	-145.3	-282.9	284.2	0.00	0.00	0.00
8,400.0	89.59	271.93	7,164.8	-142.0	-382.8	384.1	0.00	0.00	0.00
8,500.0	89.59	271.93	7,165.6	-138.6	-482.8	484.0	0.00	0.00	0.00
8,600.0	89.59	271.93	7,166.3	-135.2	-582.7	583.9	0.00	0.00	0.00
8,700.0	89.59	271.93	7,167.0	-131.9	-682.7	683.8	0.00	0.00	0.00
8,800.0	89.59	271.93	7,167.7	-128.5	-782.6	783.7	0.00	0.00	0.00
8,900.0	89.59	271.93	7,168.4	-125.2	-882.5	883.7	0.00	0.00	0.00
9,000.0	89.59	271.93	7,169.2	-121.8	-982.5	983.6	0.00	0.00	0.00
9,100.0	89.59	271.93	7,169.9	-118.4	-1,082.4	1,083.5	0.00	0.00	0.00
9,200.0	89.59	271.93	7,170.6	-115.1	-1,182.4	1,183.4	0.00	0.00	0.00
9,300.0	89.59	271.93	7,171.3	-111.7	-1,282.3	1,283.3	0.00	0.00	0.00
9,400.0	89.59	271.93	7,172.1	-108.4	-1,382.2	1,383.2	0.00	0.00	0.00
9,500.0	89.59	271.93	7,172.8	-105.0	-1,482.2	1,483.1	0.00	0.00	0.00
9,600.0	89.59	271.93	7,173.5	-101.6	-1,582.1	1,583.0	0.00	0.00	0.00
9,700.0	89.59	271.93	7,174.2	-98.3	-1,682.1	1,682.9	0.00	0.00	0.00
9,800.0	89.59	271.93	7,175.0	-94.9	-1,782.0	1,782.8	0.00	0.00	0.00
9,900.0	89.59	271.93	7,175.7	-91.5	-1,882.0	1,882.7	0.00	0.00	0.00
10,000.0	89.59	271.93	7,176.4	-88.2	-1,981.9	1,982.6	0.00	0.00	0.00



<b>Database:</b>	EDM	<b>Local Co-ordinate Reference:</b>	Well GROVES FARM N-34-33HC
<b>Company:</b>	Bayswater Exploration & Production, LLC	<b>TVD Reference:</b>	KB @ 4869.0usft (Original Well Elev)
<b>Project:</b>	DJ Basin	<b>MD Reference:</b>	KB @ 4869.0usft (Original Well Elev)
<b>Site:</b>	Groves Farm 34-L Pad	<b>North Reference:</b>	True
<b>Well:</b>	GROVES FARM N-34-33HC	<b>Survey Calculation Method:</b>	Minimum Curvature
<b>Wellbore:</b>	Wellbore #1		
<b>Design:</b>	Design #1		

Planned Survey									
Measured Depth (usft)	Inclination (°)	Azimuth (°)	Vertical Depth (usft)	+N/-S (usft)	+E/-W (usft)	Vertical Section (usft)	Dogleg Rate (°/100usft)	Build Rate (°/100usft)	Turn Rate (°/100usft)
10,100.0	89.59	271.93	7,177.1	-84.8	-2,081.8	2,082.5	0.00	0.00	0.00
10,200.0	89.59	271.93	7,177.9	-81.5	-2,181.8	2,182.4	0.00	0.00	0.00
10,300.0	89.59	271.93	7,178.6	-78.1	-2,281.7	2,282.3	0.00	0.00	0.00
10,400.0	89.59	271.93	7,179.3	-74.7	-2,381.7	2,382.2	0.00	0.00	0.00
10,500.0	89.59	271.93	7,180.0	-71.4	-2,481.6	2,482.1	0.00	0.00	0.00
10,600.0	89.59	271.93	7,180.8	-68.0	-2,581.5	2,582.1	0.00	0.00	0.00
10,700.0	89.59	271.93	7,181.5	-64.7	-2,681.5	2,682.0	0.00	0.00	0.00
10,800.0	89.59	271.93	7,182.2	-61.3	-2,781.4	2,781.9	0.00	0.00	0.00
10,900.0	89.59	271.93	7,182.9	-57.9	-2,881.4	2,881.8	0.00	0.00	0.00
11,000.0	89.59	271.93	7,183.6	-54.6	-2,981.3	2,981.7	0.00	0.00	0.00
11,100.0	89.59	271.93	7,184.4	-51.2	-3,081.2	3,081.6	0.00	0.00	0.00
11,200.0	89.59	271.93	7,185.1	-47.9	-3,181.2	3,181.5	0.00	0.00	0.00
11,300.0	89.59	271.93	7,185.8	-44.5	-3,281.1	3,281.4	0.00	0.00	0.00
11,400.0	89.59	271.93	7,186.5	-41.1	-3,381.1	3,381.3	0.00	0.00	0.00
11,500.0	89.59	271.93	7,187.3	-37.8	-3,481.0	3,481.2	0.00	0.00	0.00
11,600.0	89.59	271.93	7,188.0	-34.4	-3,580.9	3,581.1	0.00	0.00	0.00
11,700.0	89.59	271.93	7,188.7	-31.1	-3,680.9	3,681.0	0.00	0.00	0.00
11,800.0	89.59	271.93	7,189.4	-27.7	-3,780.8	3,780.9	0.00	0.00	0.00
11,900.0	89.59	271.93	7,190.2	-24.3	-3,880.8	3,880.8	0.00	0.00	0.00
12,000.0	89.59	271.93	7,190.9	-21.0	-3,980.7	3,980.7	0.00	0.00	0.00
12,094.7	89.59	271.93	7,191.6	-17.8	-4,075.4	4,075.4	0.00	0.00	0.00
12,100.0	89.59	272.03	7,191.6	-17.6	-4,080.7	4,080.6	2.06	0.00	2.06
12,193.0	89.59	273.95	7,192.3	-12.8	-4,173.5	4,173.5	2.06	0.00	2.06
12,200.0	89.59	273.80	7,192.3	-12.3	-4,180.5	4,180.4	2.06	0.00	-2.06
12,300.0	89.59	271.75	7,193.1	-7.4	-4,280.4	4,280.3	2.06	0.00	-2.06
12,400.0	89.58	269.69	7,193.8	-6.2	-4,380.4	4,380.2	2.06	0.00	-2.06
12,430.3	89.58	269.07	7,194.0	-6.5	-4,410.6	4,410.5	2.06	0.00	-2.06
GF N-34-33HC VP									
12,500.0	89.58	269.07	7,194.5	-7.6	-4,480.3	4,480.2	0.00	0.00	0.00
12,600.0	89.58	269.07	7,195.2	-9.3	-4,580.3	4,580.2	0.00	0.00	0.00
12,700.0	89.58	269.07	7,196.0	-10.9	-4,680.3	4,680.2	0.00	0.00	0.00
12,800.0	89.58	269.07	7,196.7	-12.5	-4,780.3	4,780.2	0.00	0.00	0.00
12,900.0	89.58	269.07	7,197.4	-14.1	-4,880.3	4,880.2	0.00	0.00	0.00
13,000.0	89.58	269.07	7,198.1	-15.8	-4,980.3	4,980.2	0.00	0.00	0.00
13,100.0	89.58	269.07	7,198.9	-17.4	-5,080.3	5,080.2	0.00	0.00	0.00
13,200.0	89.58	269.07	7,199.6	-19.0	-5,180.2	5,180.2	0.00	0.00	0.00
13,300.0	89.58	269.07	7,200.3	-20.6	-5,280.2	5,280.2	0.00	0.00	0.00
13,400.0	89.58	269.07	7,201.1	-22.3	-5,380.2	5,380.2	0.00	0.00	0.00
13,500.0	89.58	269.07	7,201.8	-23.9	-5,480.2	5,480.2	0.00	0.00	0.00
13,600.0	89.58	269.07	7,202.5	-25.5	-5,580.2	5,580.2	0.00	0.00	0.00
13,700.0	89.58	269.07	7,203.2	-27.2	-5,680.2	5,680.2	0.00	0.00	0.00
13,800.0	89.58	269.07	7,204.0	-28.8	-5,780.1	5,780.2	0.00	0.00	0.00
13,900.0	89.58	269.07	7,204.7	-30.4	-5,880.1	5,880.2	0.00	0.00	0.00
14,000.0	89.58	269.07	7,205.4	-32.0	-5,980.1	5,980.1	0.00	0.00	0.00
14,100.0	89.58	269.07	7,206.2	-33.7	-6,080.1	6,080.1	0.00	0.00	0.00
14,200.0	89.58	269.07	7,206.9	-35.3	-6,180.1	6,180.1	0.00	0.00	0.00
14,300.0	89.58	269.07	7,207.6	-36.9	-6,280.1	6,280.1	0.00	0.00	0.00
14,400.0	89.58	269.07	7,208.3	-38.5	-6,380.0	6,380.1	0.00	0.00	0.00
14,500.0	89.58	269.07	7,209.1	-40.2	-6,480.0	6,480.1	0.00	0.00	0.00
14,600.0	89.58	269.07	7,209.8	-41.8	-6,580.0	6,580.1	0.00	0.00	0.00
14,700.0	89.58	269.07	7,210.5	-43.4	-6,680.0	6,680.1	0.00	0.00	0.00
14,800.0	89.58	269.07	7,211.3	-45.0	-6,780.0	6,780.1	0.00	0.00	0.00
14,900.0	89.58	269.07	7,212.0	-46.7	-6,880.0	6,880.1	0.00	0.00	0.00
15,000.0	89.58	269.07	7,212.7	-48.3	-6,979.9	6,980.1	0.00	0.00	0.00



<b>Database:</b>	EDM	<b>Local Co-ordinate Reference:</b>	Well GROVES FARM N-34-33HC
<b>Company:</b>	Bayswater Exploration & Production, LLC	<b>TVD Reference:</b>	KB @ 4869.0usft (Original Well Elev)
<b>Project:</b>	DJ Basin	<b>MD Reference:</b>	KB @ 4869.0usft (Original Well Elev)
<b>Site:</b>	Groves Farm 34-L Pad	<b>North Reference:</b>	True
<b>Well:</b>	GROVES FARM N-34-33HC	<b>Survey Calculation Method:</b>	Minimum Curvature
<b>Wellbore:</b>	Wellbore #1		
<b>Design:</b>	Design #1		

Planned Survey										
Measured Depth (usft)	Inclination (°)	Azimuth (°)	Vertical Depth (usft)	+N/-S (usft)	+E/-W (usft)	Vertical Section (usft)	Dogleg Rate (°/100usft)	Build Rate (°/100usft)	Turn Rate (°/100usft)	
15,100.0	89.58	269.07	7,213.4	-49.9	-7,079.9	7,080.1	0.00	0.00	0.00	
15,200.0	89.58	269.07	7,214.2	-51.5	-7,179.9	7,180.1	0.00	0.00	0.00	
15,300.0	89.58	269.07	7,214.9	-53.2	-7,279.9	7,280.1	0.00	0.00	0.00	
15,400.0	89.58	269.07	7,215.6	-54.8	-7,379.9	7,380.1	0.00	0.00	0.00	
15,500.0	89.58	269.07	7,216.4	-56.4	-7,479.9	7,480.1	0.00	0.00	0.00	
15,600.0	89.58	269.07	7,217.1	-58.0	-7,579.9	7,580.1	0.00	0.00	0.00	
15,700.0	89.58	269.07	7,217.8	-59.7	-7,679.8	7,680.1	0.00	0.00	0.00	
15,800.0	89.58	269.07	7,218.5	-61.3	-7,779.8	7,780.1	0.00	0.00	0.00	
15,900.0	89.58	269.07	7,219.3	-62.9	-7,879.8	7,880.1	0.00	0.00	0.00	
16,000.0	89.58	269.07	7,220.0	-64.5	-7,979.8	7,980.0	0.00	0.00	0.00	
16,100.0	89.58	269.07	7,220.7	-66.2	-8,079.8	8,080.0	0.00	0.00	0.00	
16,200.0	89.58	269.07	7,221.5	-67.8	-8,179.8	8,180.0	0.00	0.00	0.00	
16,300.0	89.58	269.07	7,222.2	-69.4	-8,279.7	8,280.0	0.00	0.00	0.00	
16,400.0	89.58	269.07	7,222.9	-71.0	-8,379.7	8,380.0	0.00	0.00	0.00	
16,500.0	89.58	269.07	7,223.6	-72.7	-8,479.7	8,480.0	0.00	0.00	0.00	
16,600.0	89.58	269.07	7,224.4	-74.3	-8,579.7	8,580.0	0.00	0.00	0.00	
16,700.0	89.58	269.07	7,225.1	-75.9	-8,679.7	8,680.0	0.00	0.00	0.00	
16,800.0	89.58	269.07	7,225.8	-77.5	-8,779.7	8,780.0	0.00	0.00	0.00	
16,900.0	89.58	269.07	7,226.6	-79.2	-8,879.6	8,880.0	0.00	0.00	0.00	
17,000.0	89.58	269.07	7,227.3	-80.8	-8,979.6	8,980.0	0.00	0.00	0.00	
17,100.0	89.58	269.07	7,228.0	-82.4	-9,079.6	9,080.0	0.00	0.00	0.00	
17,200.0	89.58	269.07	7,228.7	-84.0	-9,179.6	9,180.0	0.00	0.00	0.00	
17,235.3	89.58	269.07	7,229.0	-84.6	-9,214.9	9,215.3	0.00	0.00	0.00	
GF N-34-33HC PBHL										

Design Targets										
Target Name	Dip Angle (°)	Dip Dir. (°)	TVD (usft)	+N/-S (usft)	+E/-W (usft)	Northing (usft)	Easting (usft)	Latitude	Longitude	
GF N-34-33HC LP - hit/miss target - Shape - Point	0.00	0.00	7,159.0	-169.0	422.0	1,437,005.93	3,238,665.15	40° 31' 47.316 N	104° 38' 29.069 W	
GF N-34-33HC VP - plan hits target center - Point	0.00	0.00	7,194.0	-6.5	-4,410.6	1,437,121.72	3,233,831.20	40° 31' 48.918 N	104° 39' 31.655 W	
GF N-34-33HC PBHL - plan hits target center - Point	0.00	0.00	7,229.0	-84.6	-9,214.9	1,436,997.20	3,229,027.91	40° 31' 48.133 N	104° 40' 33.874 W	