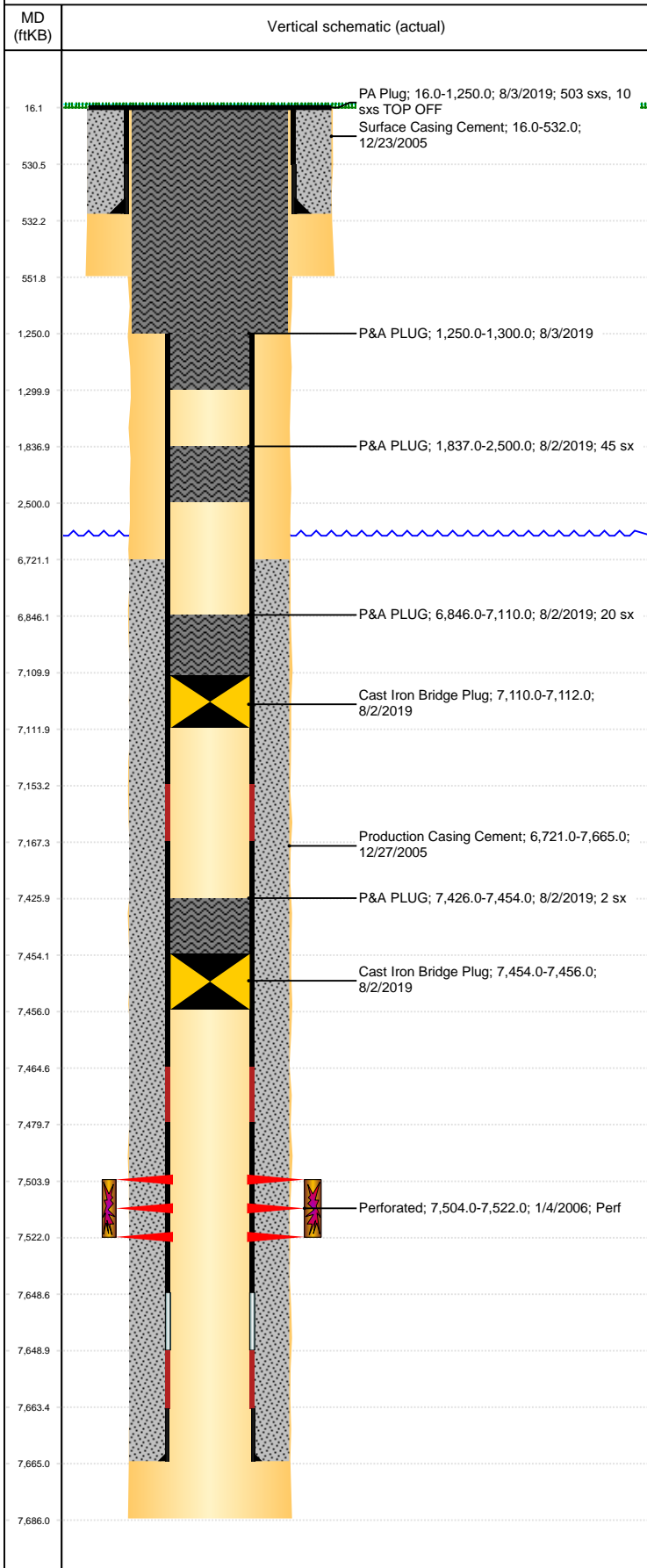


Well Name: KORI J19-14

VERTICAL, ORIGINAL HOLE, 6/26/2020 8:21:44 AM



Well Header									
API 05-123-22719		Business Unit DJ BASIN			District 15		Well Config VERTICAL		
KB - GL / MSL (ft... 16.00		Spud Date 12/23/2005		P & A Date 3/27/2020		Well Production Status PR			SoRT No
Comment STATE SHOWS SHUT IN SINCE SEPT 2016.									
Surface Location (Congressional)									
Qtr 3 SE	Qtr 4 SW	Section 19	Twonshp 5	Twonsh... N	Range 66	Rng E... W	Actual Latitude (°) 40.37994573	Actual Longitude (°) -104.82429549	
Wellbore Sections									
Section Des			Size (in)			Act Top, MD (ftKB)		Act Btm, MD (ftKB)	
SURFACE			12 1/4			16		552	
PRODUCTION			7 7/8			552		7,686	
Casing Strings									
Csg Des			Run Date	OD (in)	Wt/Len (lb/ft)	Grade	Top, MD (ftKB)	MD (ftKB)	
Surface			12/23/2005	8 5/8	24.00	J-55	16.0	532.0	
Production			12/27/2005	4 1/2	11.60	M-80	16.0	7,665.0	
Cement									
Des				Start Date		Top (ftKB)		Btm (ftKB)	
Surface Casing Cement				12/23/2005		16.0		532.0	
Production Casing Cement				12/27/2005		6,721.0		7,665.0	
P&A PLUG				8/2/2019		7,426.0		7,454.0	
P&A PLUG				8/2/2019		6,846.0		7,110.0	
P&A PLUG				8/2/2019		1,837.0		2,500.0	
PA Plug				8/3/2019		16.0		1,250.0	
P&A PLUG				8/3/2019		1,250.0		1,300.0	
Zone Statuses									
Zone Name	Status Date	Status	Fluid Type	Job				Prod Method	
CODELL	1/14/2006	PR	Oil					Flowing	
CODELL	2/2/2010	PR	Water					Flowing	
Perforation Data									
Linked Zone			Bnch/Stg	Entered Shot Total	Top (ftKB)	Btm (ftKB)		Date	
CODELL, ORIGINAL HOLE				72	7,504.00	7,522.00		1/4/2006	
Stimulation Intervals									
Zone				Start Date		Top (ftKB)		Btm (ftKB)	
CODELL, ORIGINAL HOLE				1/12/2006		7,504.0		7,522.0	
Other In Hole									
Run Date	Des			Make	OD (in)	Top (ftKB)	Btm (ftKB)		
8/2/2019	Cast Iron Bridge Plug				3.99	7,454.0	7,456.0		
8/2/2019	Cast Iron Bridge Plug				3.99	7,110.0	7,112.0		
Logs									
Date		Type				Top, MD (ftKB)		Btm, MD (ftKB)	
12/27/2005		COMPENSATED DENSITY				2,700.0		7,658.0	
12/27/2005		INDUCTION				544.0		7,678.0	
1/3/2006		CEMENT BOND				6,600.0		7,630.0	
Plug Back Total Depths									
Date		Type		Com				Depth (ftKB)	
1/3/2006		FILL		DEPTH LOGGER ON CBL				7,631.0	
8/4/2019		CEMENT PLUG		PA				16.0	