



6855 W. 119th Ave.  
Broomfield, CO 80020

CLIENT: Kerr-McGee Oil & Gas Onshore LP

LOGGED BY: Brandon LeVasseur

PROJECT MANAGER: Robert Cornez

DRILLING CONTRACTOR: Tasman Geosciences, Inc.

DRILLING EQUIPMENT: Hand Auger

DRILL BIT SIZE (INCHES): 3"

DATE STARTED - COMPLETED: 9/9/2019

TOTAL WELL DEPTH (FT. BGS): 9

DEPTH TO WATER (FT. BGS): 4.27 (9/23/19) ▼

**Kern L 4-14  
Gas Sales Line**

BORING/WELL ID: BH01

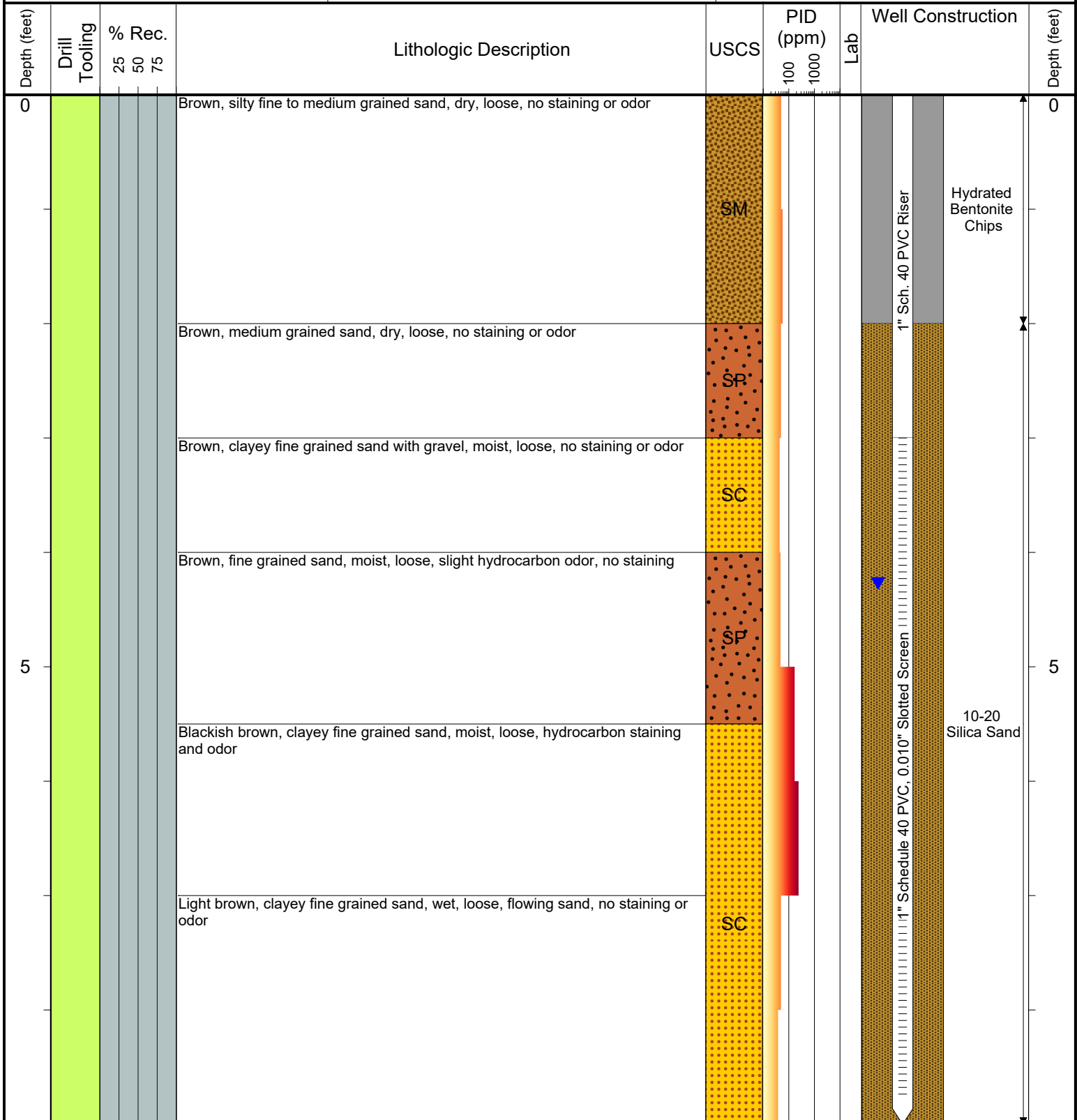
SURFACE COMPLETION: Flush Mount

LATITUDE (WSG 1984): 40.247902959

LONGITUDE (WSG 1984): -104.786194675

CASING ELEVATION (FT. AMSL): 4804.89

GROUND ELEVATION (FT. AMSL): 4805.07



**Drilling / Sample Method:**

- Macro-Core
- Hydrovac
- Expendable Well Tip
- Hand Auger

**Laboratory Sample Types:**

- Geotechnical Lab
- Analytical Chemistry Lab
- Geotechnical & Analytical Chemistry Lab



6855 W. 119th Ave.  
Broomfield, CO 80020

CLIENT: Kerr-McGee Oil & Gas Onshore LP

LOGGED BY: Brandon LeVasseur

PROJECT MANAGER: Robert Cornez

DRILLING CONTRACTOR: Tasman Geosciences, Inc.

DRILLING EQUIPMENT: Hand Auger

DRILL BIT SIZE (INCHES): 3"

DATE STARTED - COMPLETED: 9/9/2019

TOTAL WELL DEPTH (FT. BGS): 9

DEPTH TO WATER (FT. BGS): 4.05 (9/23/19) ▼

**Kern L 4-14  
Gas Sales Line**

BORING/WELL ID: BH02

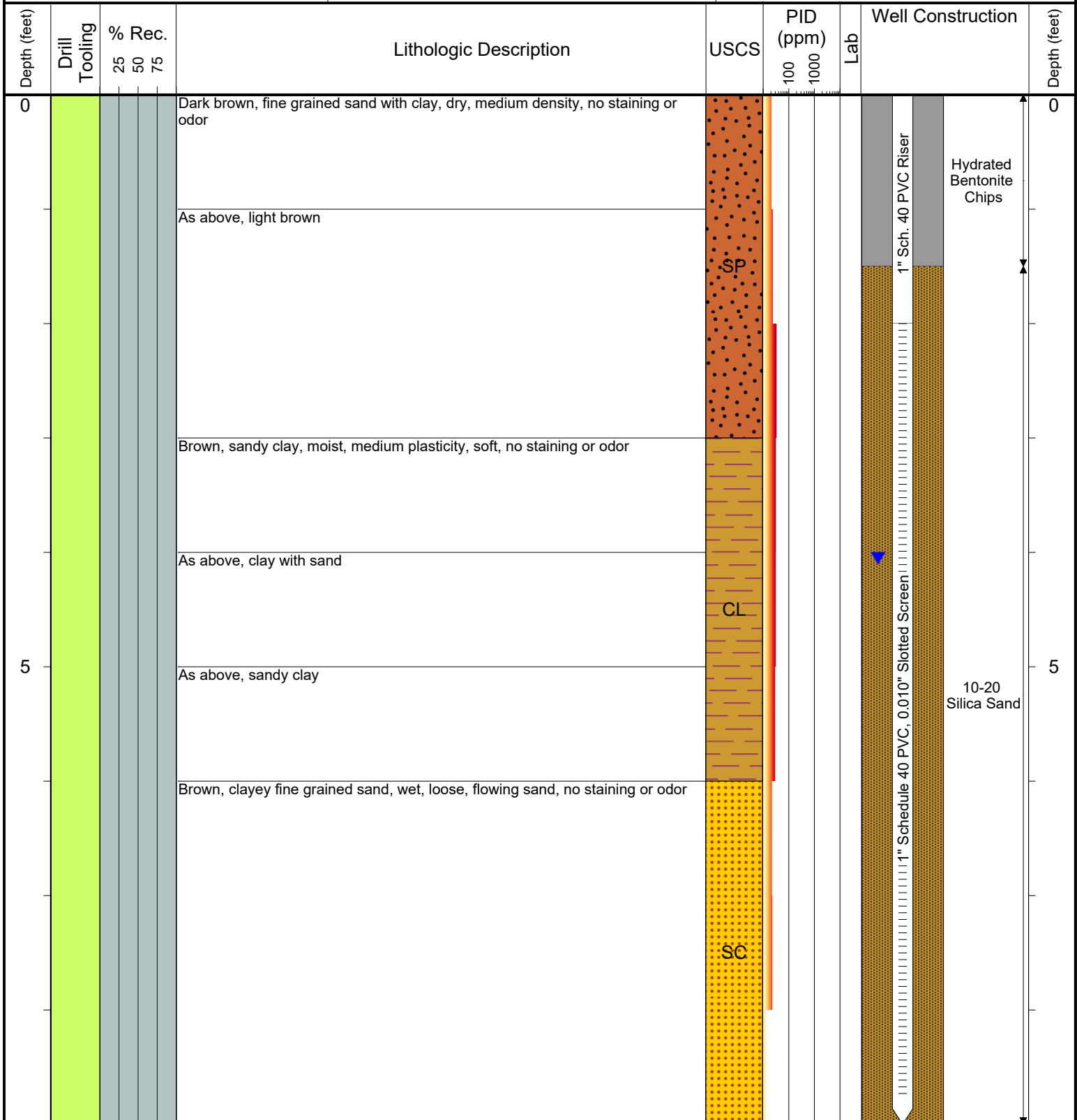
SURFACE COMPLETION: Flush Mount

LATITUDE (WSG 1984): 40.247836776

LONGITUDE (WSG 1984): -104.786321845

CASING ELEVATION (FT. AMSL): 4802.48

GROUND ELEVATION (FT. AMSL): 4802.65



**Drilling / Sample Method:**

- Macro-Core
- Hydrovac
- Expendable Well Tip
- Hand Auger

**Laboratory Sample Types:**

- Geotechnical Lab
- Analytical Chemistry Lab
- Geotechnical & Analytical Chemistry Lab



6855 W. 119th Ave.  
Broomfield, CO 80020

CLIENT: Kerr-McGee Oil & Gas Onshore LP

LOGGED BY: Brandon LeVasseur

PROJECT MANAGER: Robert Cornez

DRILLING CONTRACTOR: Tasman Geosciences, Inc.

DRILLING EQUIPMENT: Hand Auger

DRILL BIT SIZE (INCHES): 3"

DATE STARTED - COMPLETED: 9/9/2019

TOTAL WELL DEPTH (FT. BGS): 9

DEPTH TO WATER (FT. BGS): 3.83 (9/23/19) ▼

**Kern L 4-14  
Gas Sales Line**

BORING/WELL ID: BH03

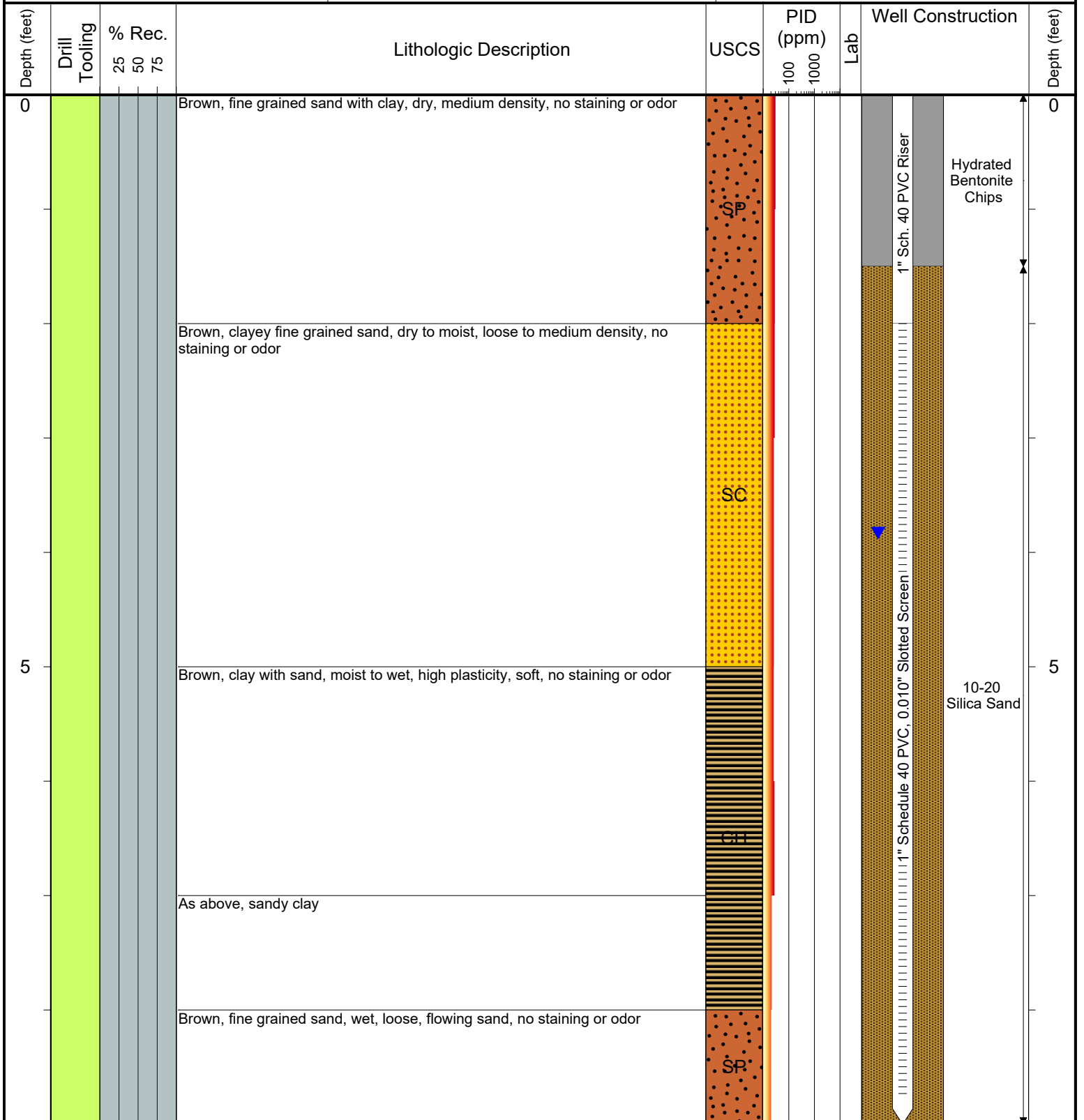
SURFACE COMPLETION: Flush Mount

LATITUDE (WSG 1984): 40.247824913

LONGITUDE (WSG 1984): -104.786143539

CASING ELEVATION (FT. AMSL): 4804.59

GROUND ELEVATION (FT. AMSL): 4804.77



**Drilling / Sample Method:**

- Macro-Core
- Hydrovac
- Expendable Well Tip
- Hand Auger

**Laboratory Sample Types:**

- Geotechnical Lab
- Analytical Chemistry Lab
- Geotechnical & Analytical Chemistry Lab



6855 W. 119th Ave.  
Broomfield, CO 80020

CLIENT: Kerr-McGee Oil & Gas Onshore LP

LOGGED BY: Brandon LeVasseur

PROJECT MANAGER: Robert Cornez

DRILLING CONTRACTOR: Tasman Geosciences, Inc.

DRILLING EQUIPMENT: Hand Auger

DRILL BIT SIZE (INCHES): 3"

DATE STARTED - COMPLETED: 9/9/2019

TOTAL WELL DEPTH (FT. BGS): 8

DEPTH TO WATER (FT. BGS): 2.04 (9/23/19) ▼

**Kern L 4-14  
Gas Sales Line**

BORING/WELL ID: BH04

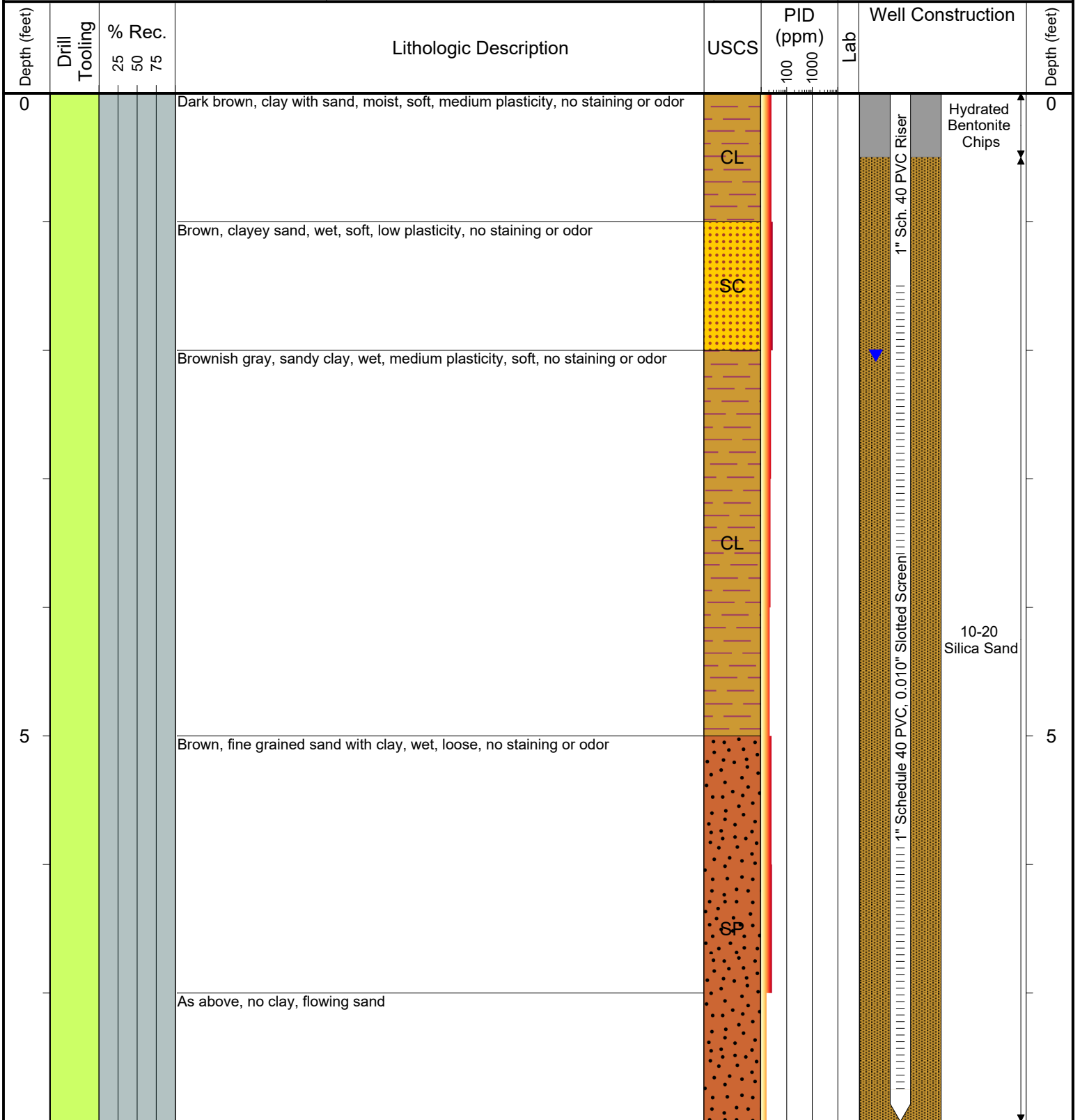
SURFACE COMPLETION: Flush Mount

LATITUDE (WSG 1984): 40.247946111

LONGITUDE (WSG 1984): -104.78606756

CASING ELEVATION (FT. AMSL): 4804.44

GROUND ELEVATION (FT. AMSL): 4805.03



**Drilling / Sample Method:**

- Macro-Core
- Hydrovac
- Expendable Well Tip
- Hand Auger

**Laboratory Sample Types:**

- Geotechnical Lab
- Analytical Chemistry Lab
- Geotechnical & Analytical Chemistry Lab



6855 W. 119th Ave.  
Broomfield, CO 80020

CLIENT: Kerr-McGee Oil & Gas Onshore LP

LOGGED BY: Brandon LeVasseur

PROJECT MANAGER: Robert Cornez

DRILLING CONTRACTOR: Tasman Geosciences, Inc.

DRILLING EQUIPMENT: Hand Auger/AMS Powerprobe

DRILL BIT SIZE (INCHES): 2.375"

DATE STARTED - COMPLETED: 12/10/2019

TOTAL WELL DEPTH (FT. BGS): 8

DEPTH TO WATER (FT. BGS): 3.06 (12/30/19) ▼

**Kern L 4-14  
Gas Sales Line**

BORING/WELL ID: BH05

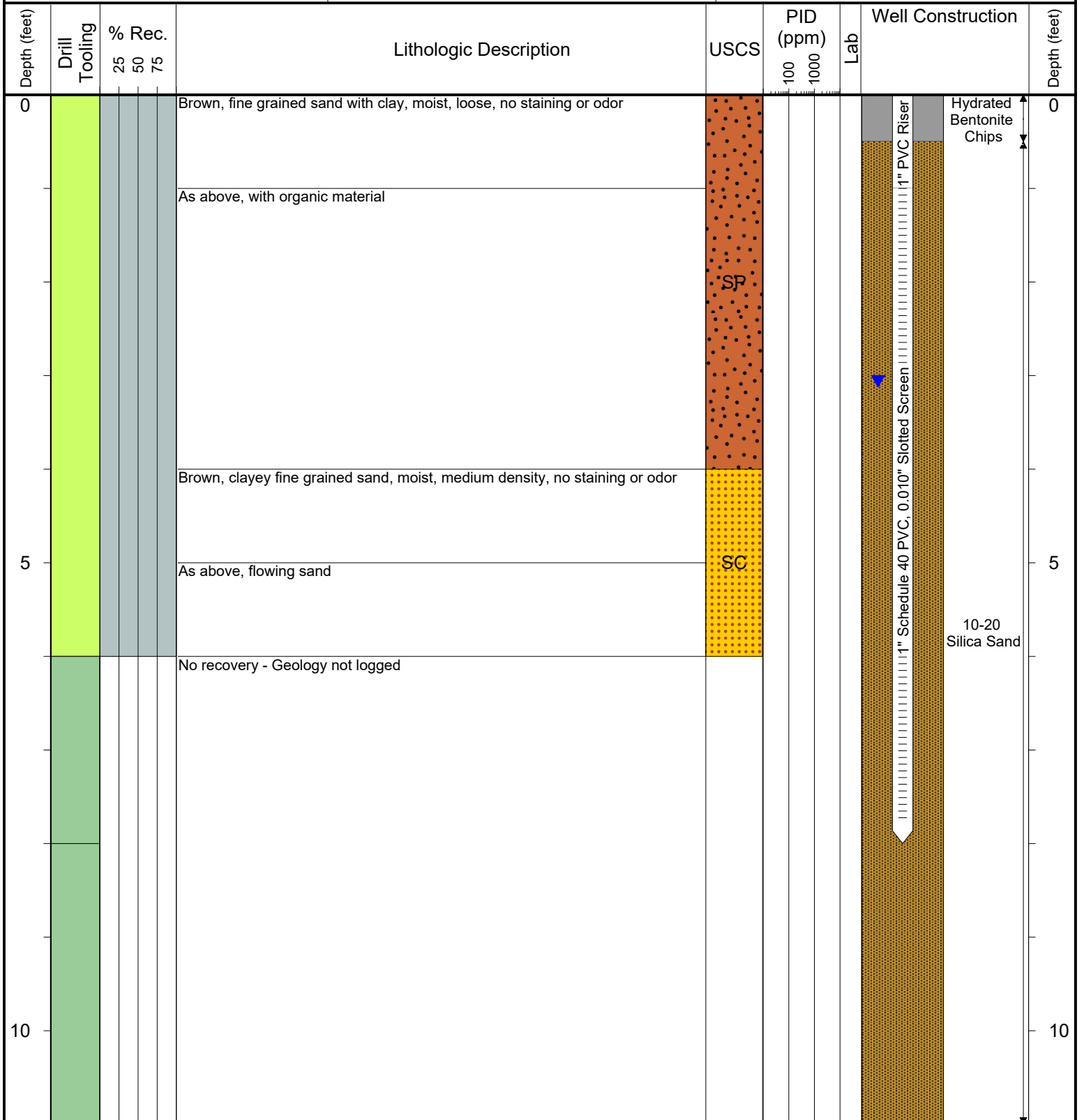
SURFACE COMPLETION: Flush Mount

LATITUDE (WSG 1984): 40.247943575

LONGITUDE (WSG 1984): -104.786295599

CASING ELEVATION (FT. AMSL): 4804.36

GROUND ELEVATION (FT. AMSL): 4804.6



**Drilling / Sample Method:**

- Macro-Core
- Hydrovac
- Expendable Well Tip
- Hand Auger

**Laboratory Sample Types:**

- Geotechnical Lab
- Analytical Chemistry Lab
- Geotechnical & Analytical Chemistry Lab