

LEGEND:

- = PROPOSED WELLHEAD.
- ◆ = TOP OF GAS INTERVAL.
- = TARGET BOTTOM HOLE.
- ▲ = SECTION CORNERS LOCATED. (NAD 83)
- △ = SECTION CORNERS RE-ESTABLISHED. (Not Set on Ground.) (NAD 83)

1953 Brass Cap,
0.8' High, Mound
of Stones, Steel
Post
Lat: 39.695234°
Long: 108.145545°

T4S, R96W, 6th P.M.

Rio Blanco County

889°07'26"W 1370.45' (Meas.) 889°05'03"W 1371.03' (Meas.) 889°48'15"W 1318.16' (Meas.) 889°41'16"W 1317.81' (Meas.)

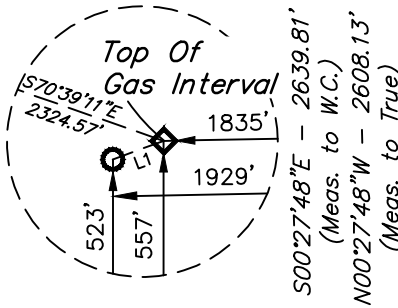
LINE TABLE		
LINE	DIRECTION	LENGTH
L1	S70°00'26"W	100.03'

BASIS OF BEARINGS
N00°46'39"W - 2730.78'
(Meas. to True)

1953 Brass Cap,
0.2' High, Mound
of Stones, Steel
Post
Lat: 39.687828°
Long: 108.145436°

True Position
Lat: 39.687741°
Long: 108.145436°

Detail "A"
No Scale



1953 Brass,
Cap 0.8' High,
Steel Post
Lat: 39.680584°
Long: 108.145383°

PDOP = 1.2

NAD 83 (SURFACE LOCATION)	
LATITUDE = 39°41'03.14" (39.684207)	
LONGITUDE = 108°08'26.86" (108.140795)	
NAD 27 (SURFACE LOCATION)	
LATITUDE = 39°41'03.23" (39.684231)	
LONGITUDE = 108°08'24.57" (108.140159)	
UTM NAD 27 (ZONE 12)	
N: 14423894.69 E: 2445077.98	



NAD 83 (TOP OF GAS INTERVAL)	NAD 83 (TARGET BOTTOM HOLE)
LATITUDE = 39°40'55.48" (39.682079)	LATITUDE = 39°40'55.15" (39.681986)
LONGITUDE = 108°07'58.84" (108.133012)	LONGITUDE = 108°08'00.05" (108.133346)
NAD 27 (TOP OF GAS INTERVAL)	NAD 27 (TARGET BOTTOM HOLE)
LATITUDE = 39°40'55.57" (39.682103)	LATITUDE = 39°40'55.24" (39.682010)
LONGITUDE = 108°07'56.56" (108.132377)	LONGITUDE = 108°07'57.76" (108.132711)
UTM NAD 27 (ZONE 12)	
N: 14423189.60 E: 2447292.83	N: 14423152.64 E: 2447199.89

NOTE:
Distances referenced
on plat to section lines
are perpendicular.

LOT 6
BJU M23A FED 25B-23 496
Elev. Ungraded Ground = 8108.4'

See Detail "A"
@ Left

Target Bottom Hole

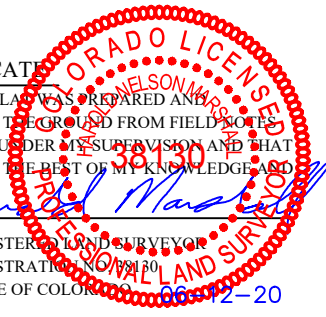
1953 Brass Cap,
1.0' High, Mound
of Stones
Lat: 39.680552°
Long: 108.135924°

1953 Brass Cap,
0.5' High, Mound
of Stones, Steel
Post
Lat: 39.680548°
Long: 108.126499°

CERTIFICATE

THIS IS TO CERTIFY THAT THE ABOVE PLAT WAS PREPARED AND LOCATION AS SHOWN WAS STAKED ON THE GROUND FROM FIELD NOTES OF ACTUAL SURVEYS MADE BY ME OR UNDER MY SUPERVISION AND THAT THE SAME ARE TRUE AND CORRECT TO THE BEST OF MY KNOWLEDGE AND BELIEF.

Handwritten Signature: Harold Marshall
REGISTERED LAND SURVEYOR
REGISTRATION NO. 199180
STATE OF COLORADO 06-07-20



BASIS OF BEARINGS

BEARINGS ARE BASED ON THE ASSUMPTION THAT THE WEST LINE OF THE NORTHWEST 1/4 OF SECTION 23 BEARS N00°46'39"W. MONUMENTS DESCRIBED HEREON.

BASIS OF ELEVATION

BENCH MARK (H79) LOCATED IN THE NE 1/4 OF SECTION 35, T4S, R98W, 6th P.M., TAKEN FROM THE BULL FORK QUADRANGLE, COLORADO, 7.5 MINUTE SERIES. (TOPOGRAPHIC MAP) PUBLISHED BY THE UNITED STATES DEPARTMENT OF THE INTERIOR, GEOLOGICAL SURVEY. SAID ELEVATION IS MARKED AS BEING 8535 FEET.



UELS, LLC
Corporate Office * 85 South 200 East
Vernal, UT 84078 * (435) 789-1017



Caerus Oil & Gas LLC

BJU M23A FED 25B-23 496
LOT 6, SECTION 23, T4S, R96W, 6th P.M.
GARFIELD COUNTY, COLORADO

SURVEYED BY	DAYTON SLAUGH, B.H.	05-27-20	SCALE
DRAWN BY	T.L.L.	06-11-20	1" = 1000'

WELL LOCATION PLAT